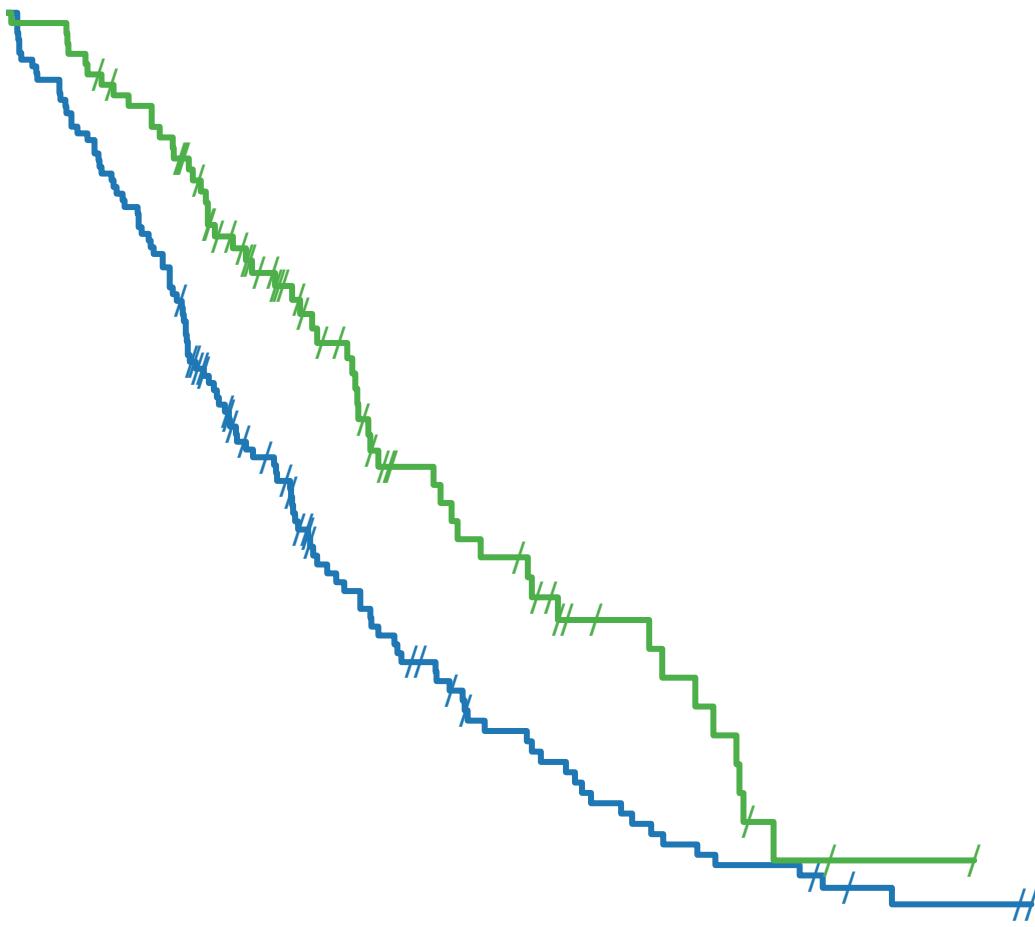
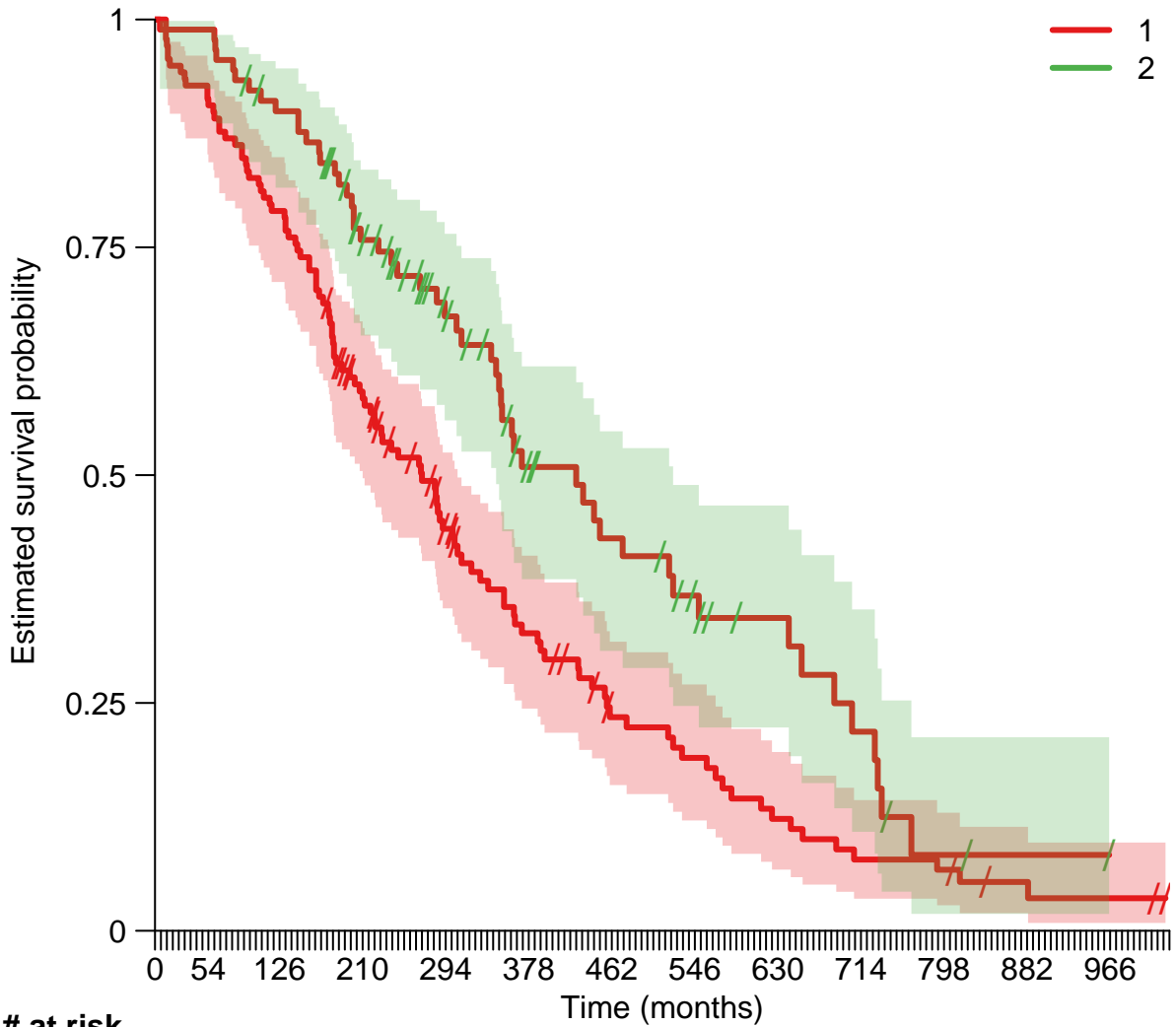


**# at risk**

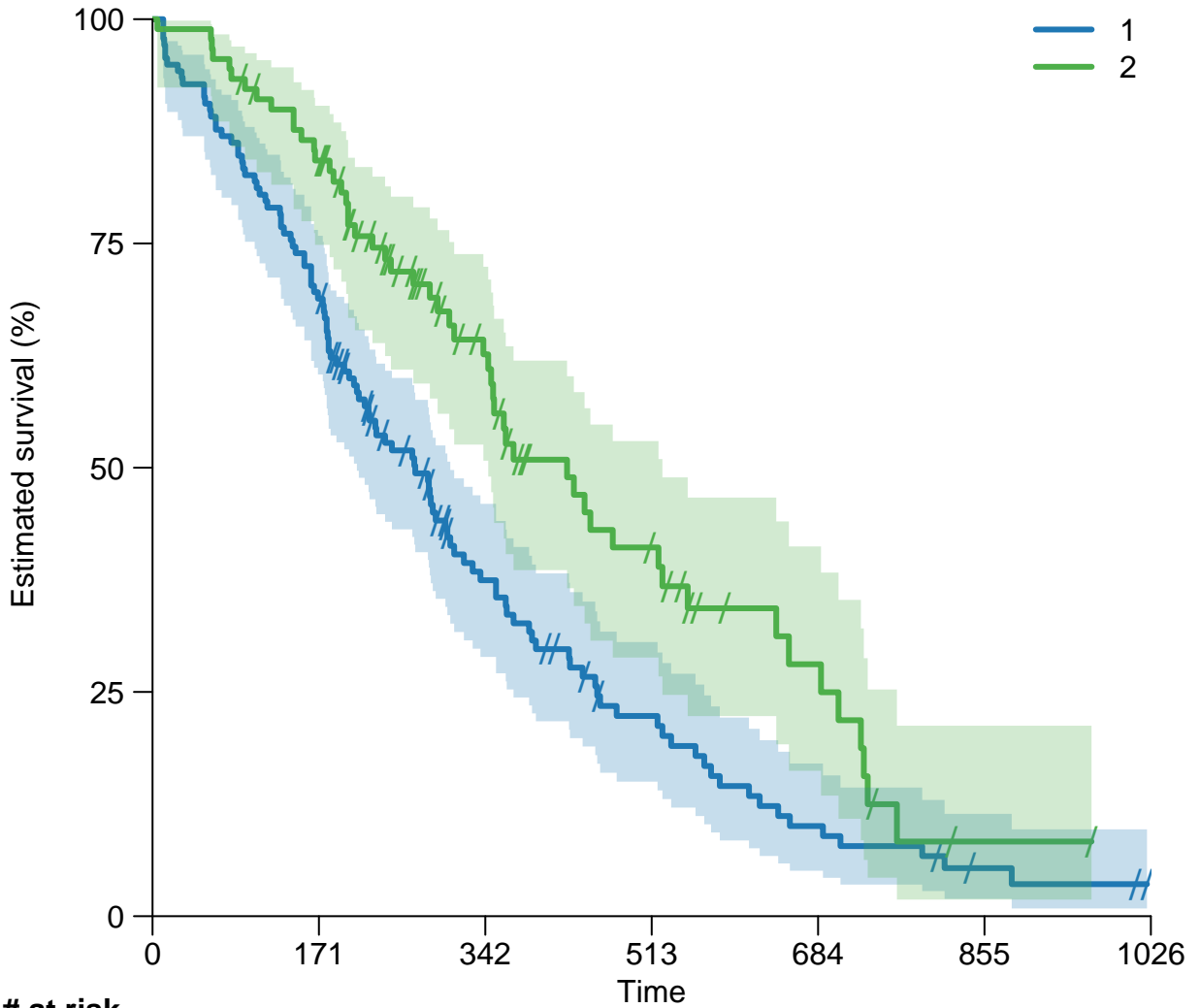
1	138	95	39	20	9	3	0
2	90	74	38	19	9	1	0





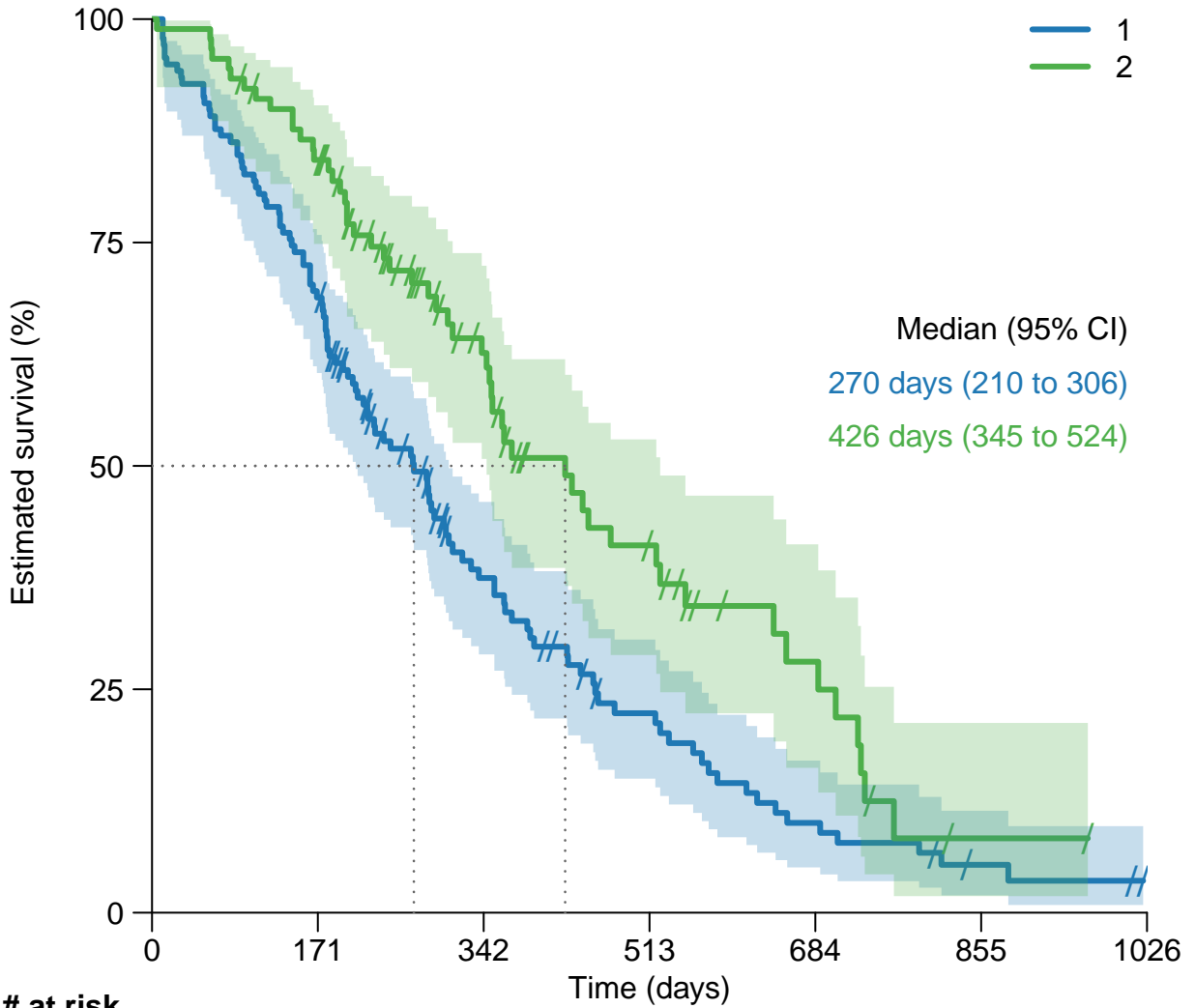
# at risk





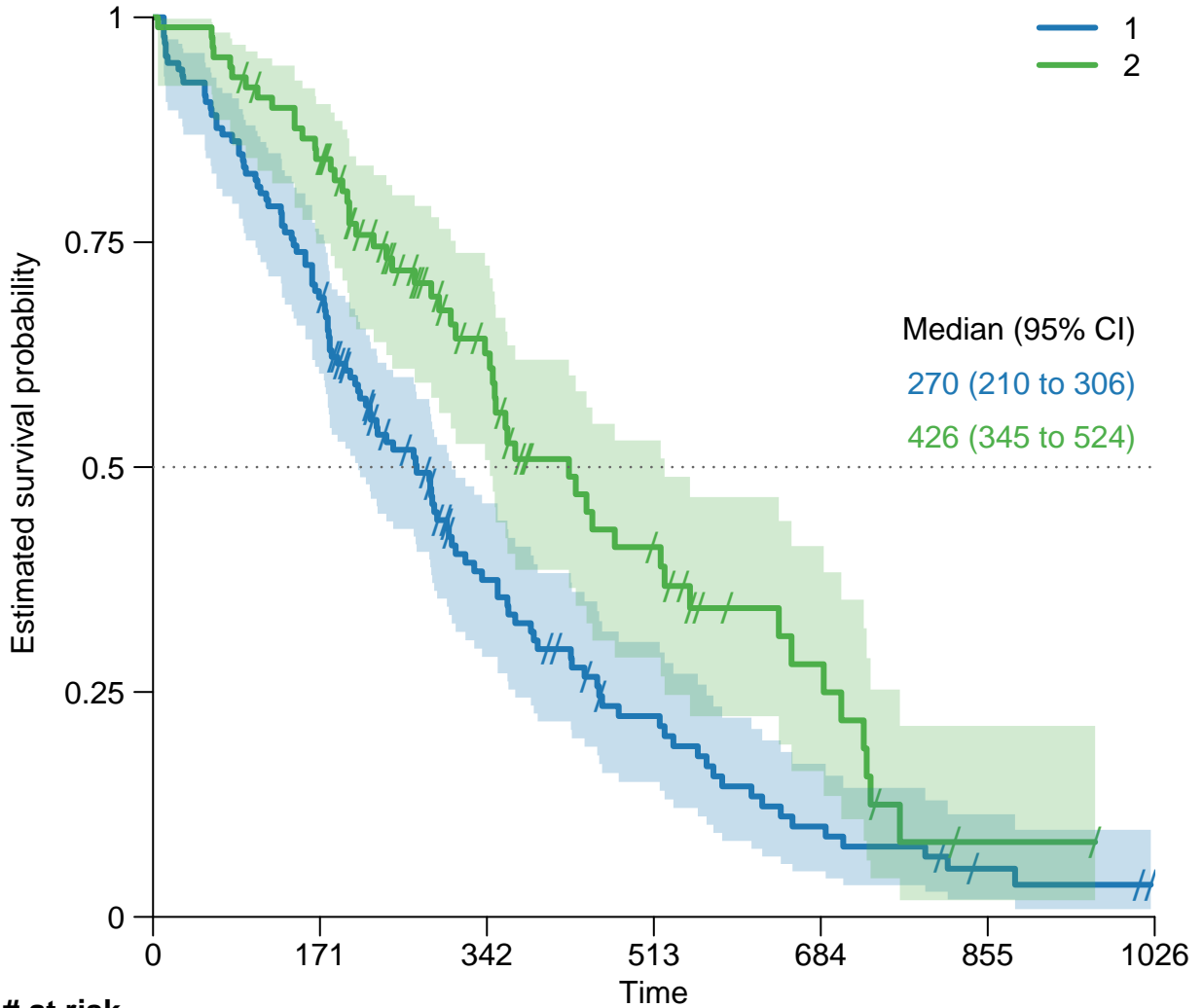
**# at risk**

1	138	95	39	20	9	3	0
2	90	74	38	19	9	1	0



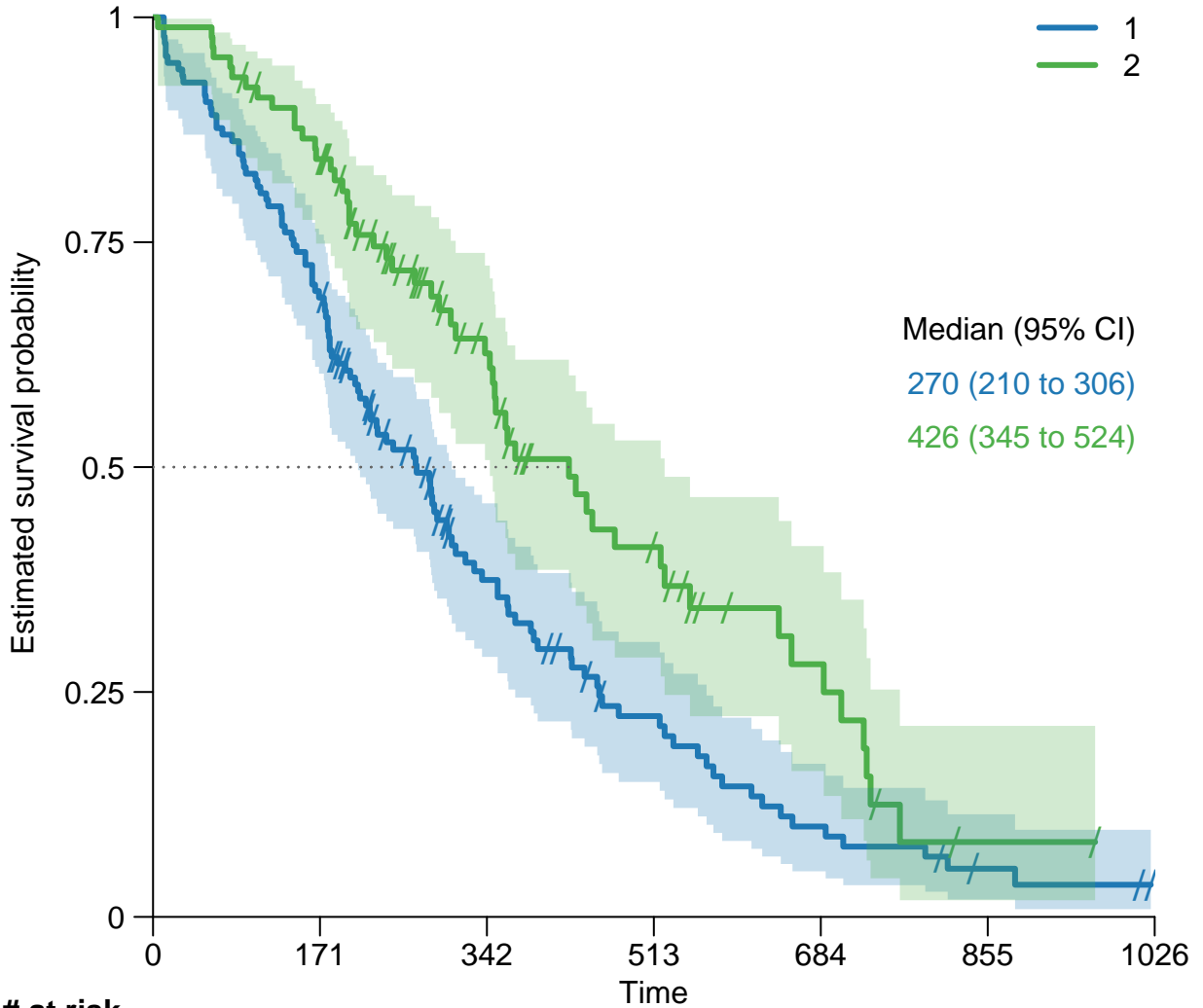
**# at risk**

1	138	95	39	20	9	3	0
2	90	74	38	19	9	1	0



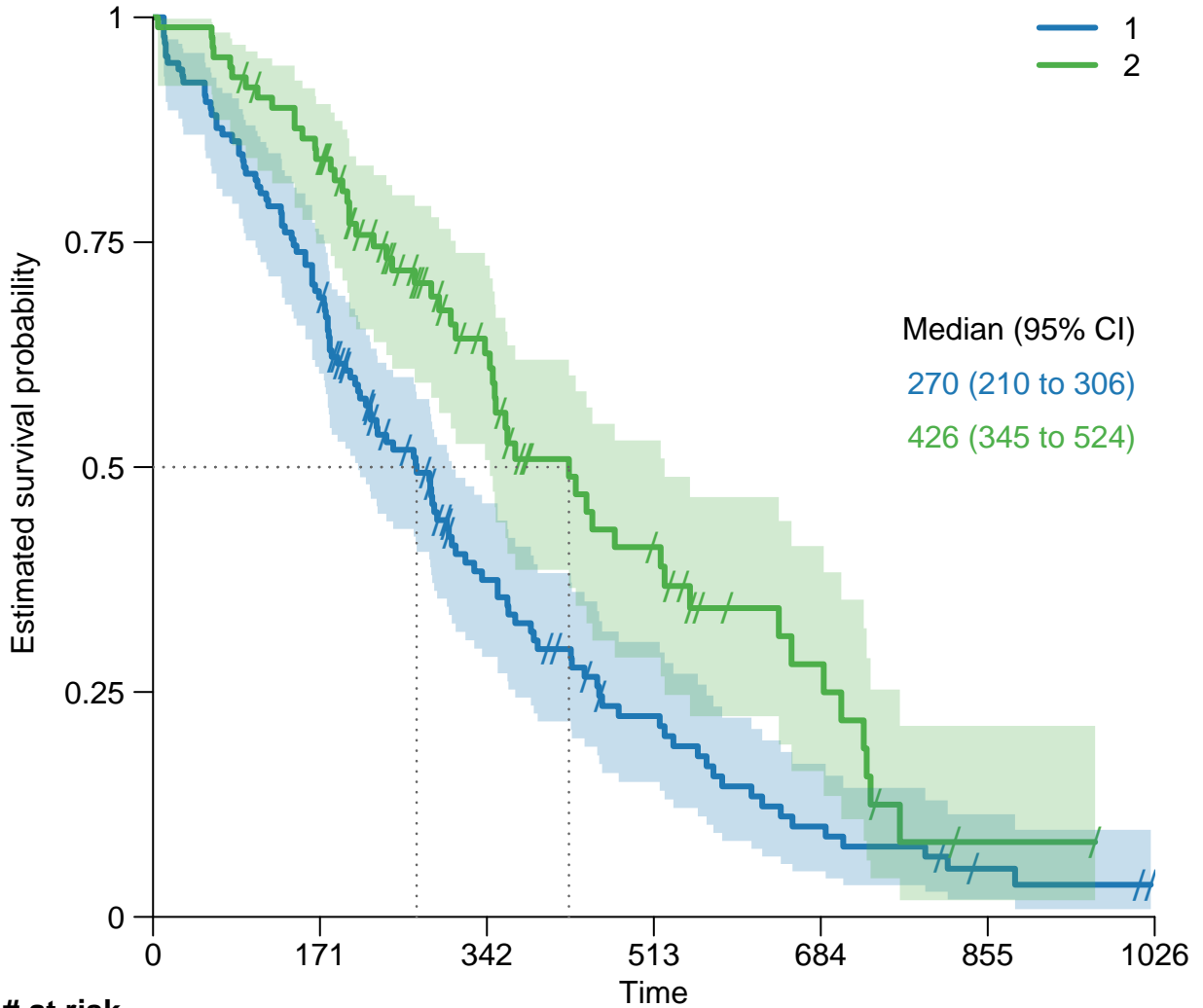
**# at risk**

1	138	95	39	20	9	3	0
2	90	74	38	19	9	1	0



**# at risk**

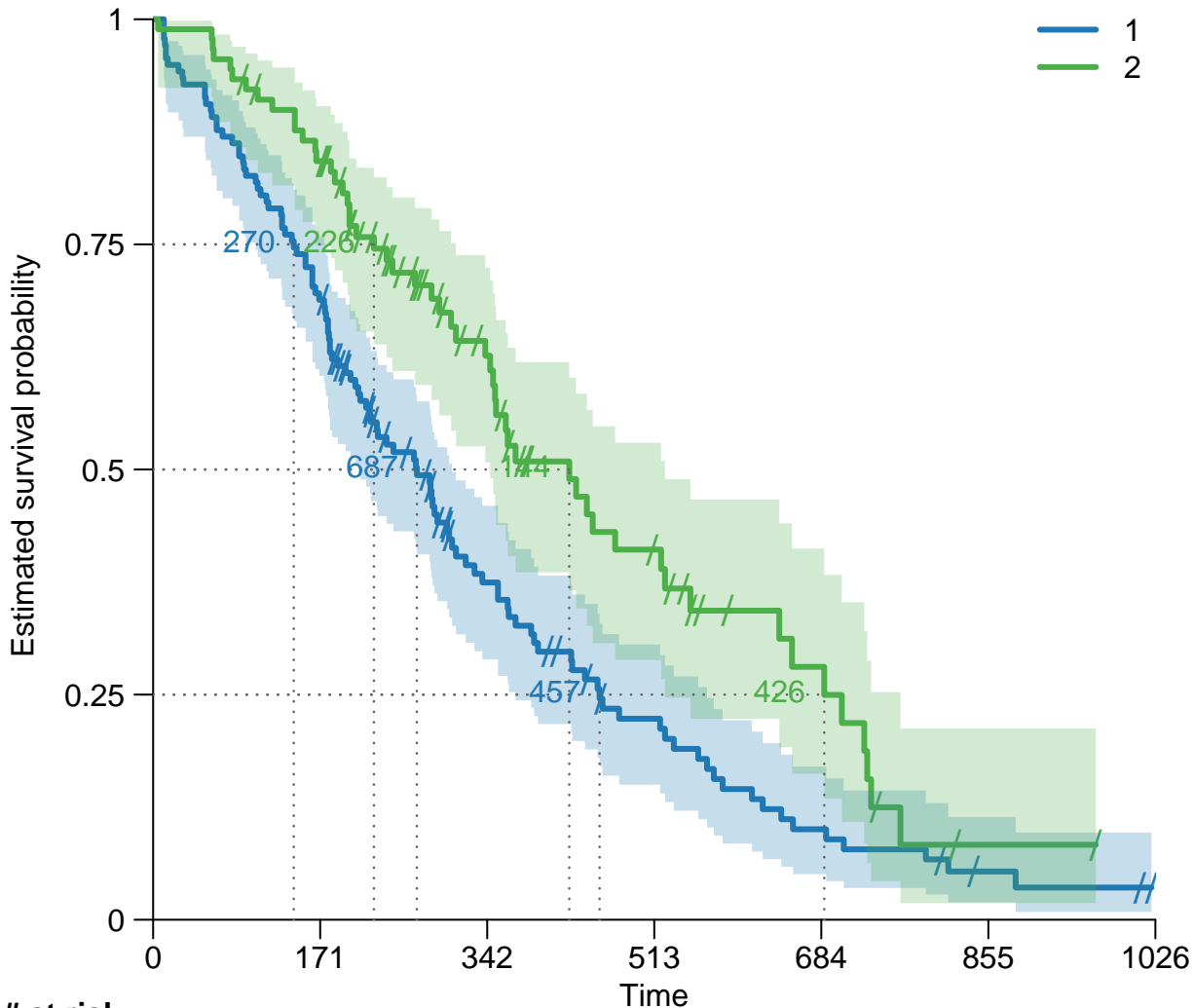
1	138	95	39	20	9	3	0
2	90	74	38	19	9	1	0



**# at risk**

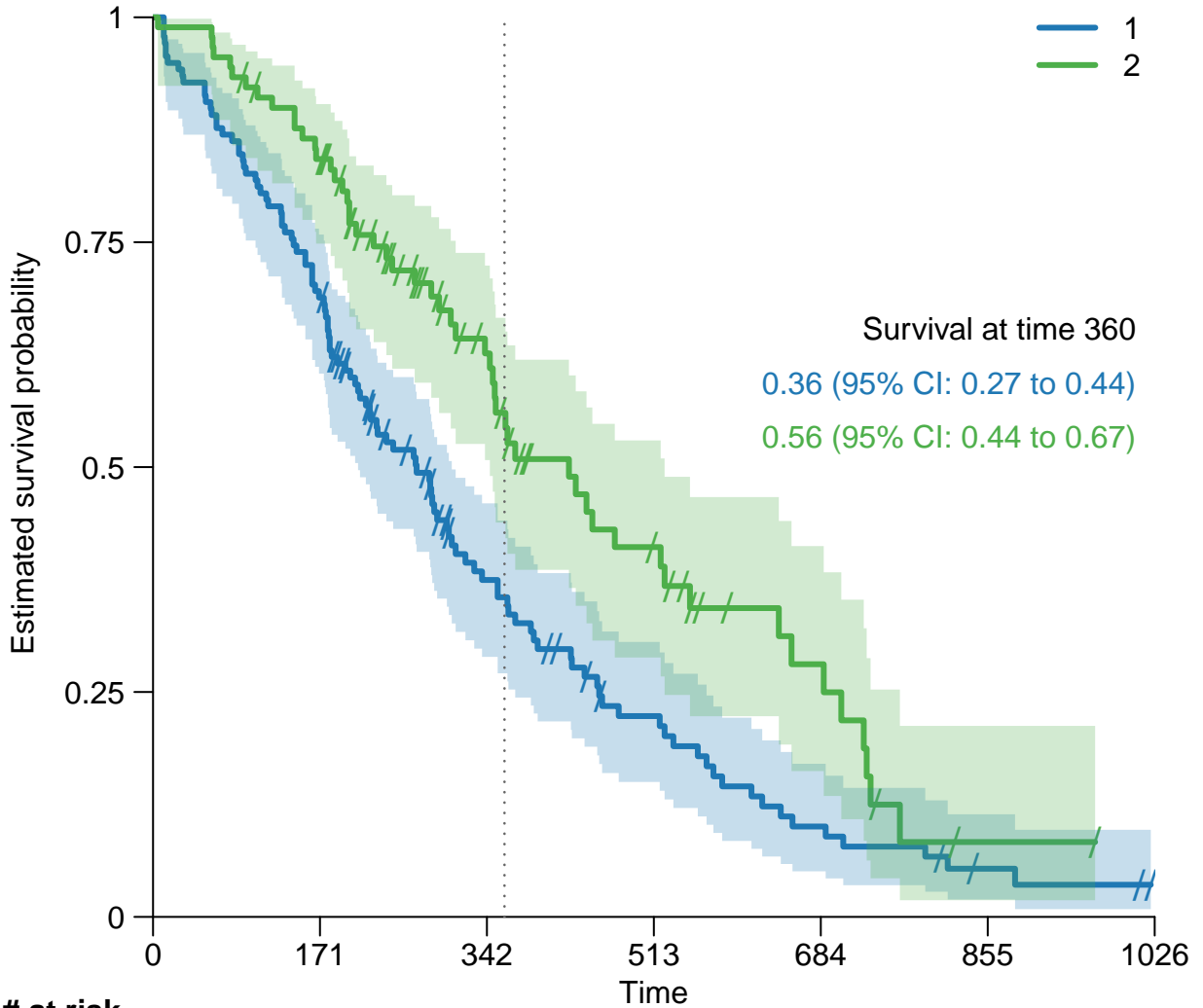
1	138	95	39	20	9	3	0
2	90	74	38	19	9	1	0





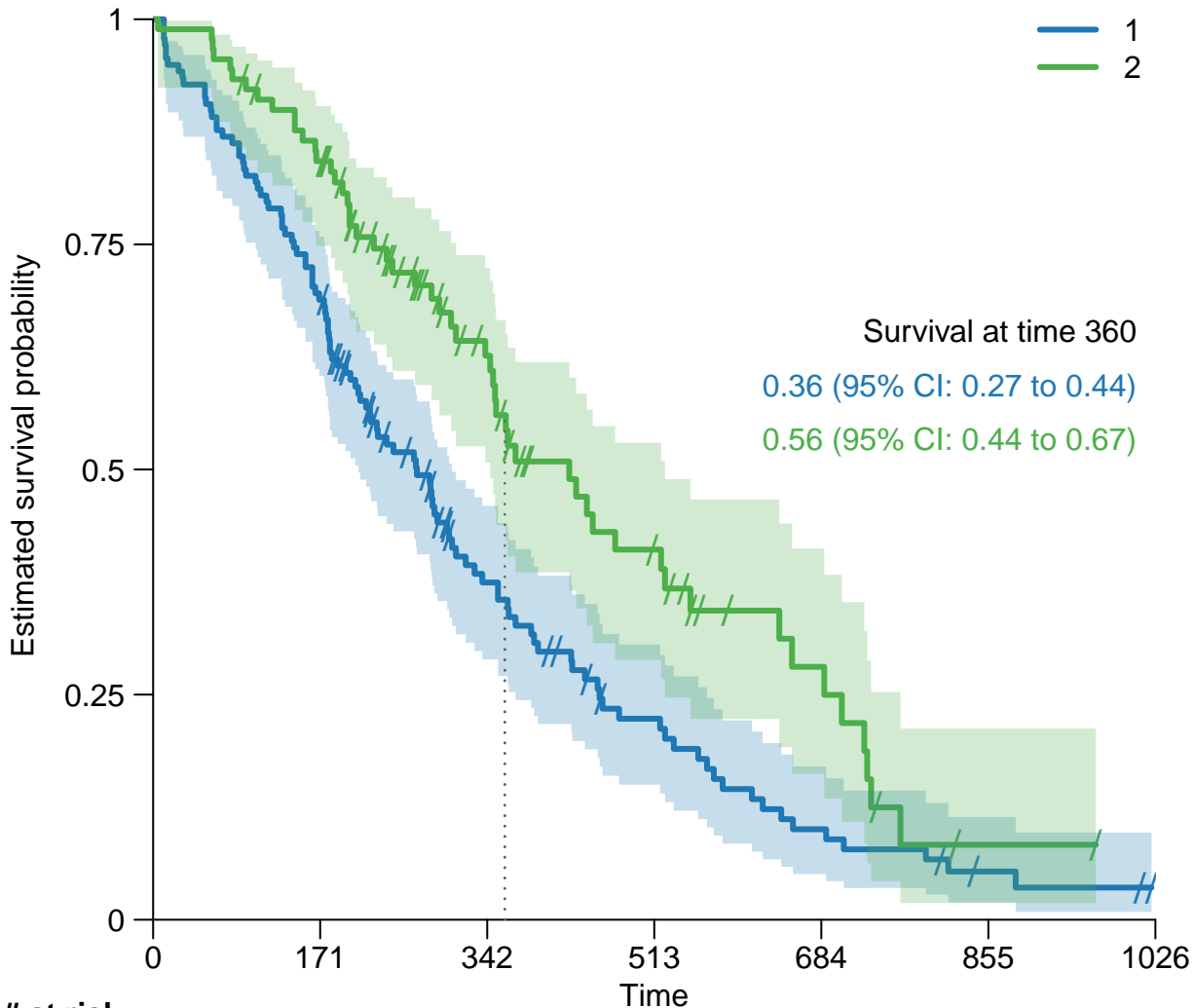
**# at risk**

1	138	95	39	20	9	3	0
2	90	74	38	19	9	1	0



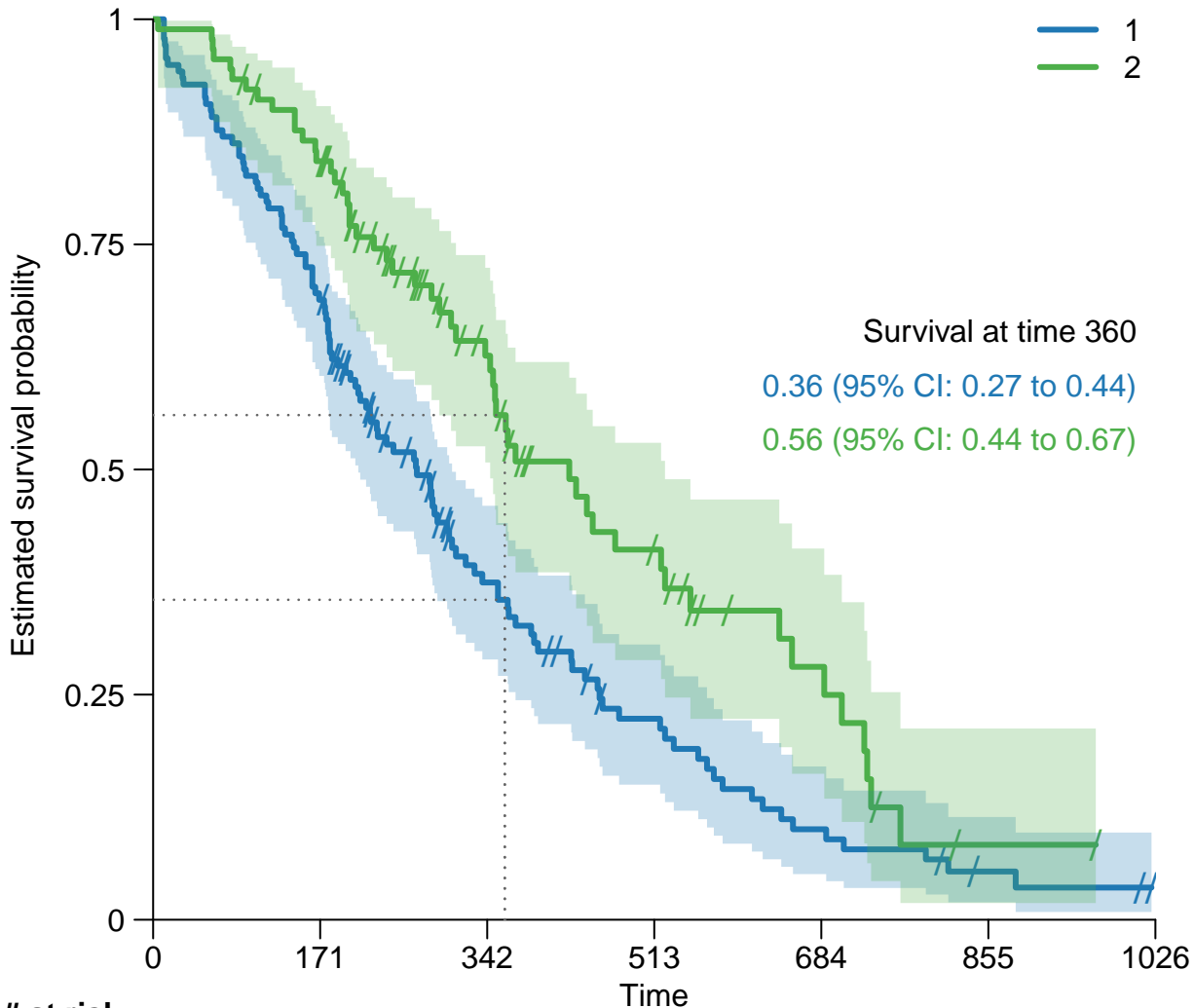
**# at risk**

1	138	95	39	20	9	3	0
2	90	74	38	19	9	1	0



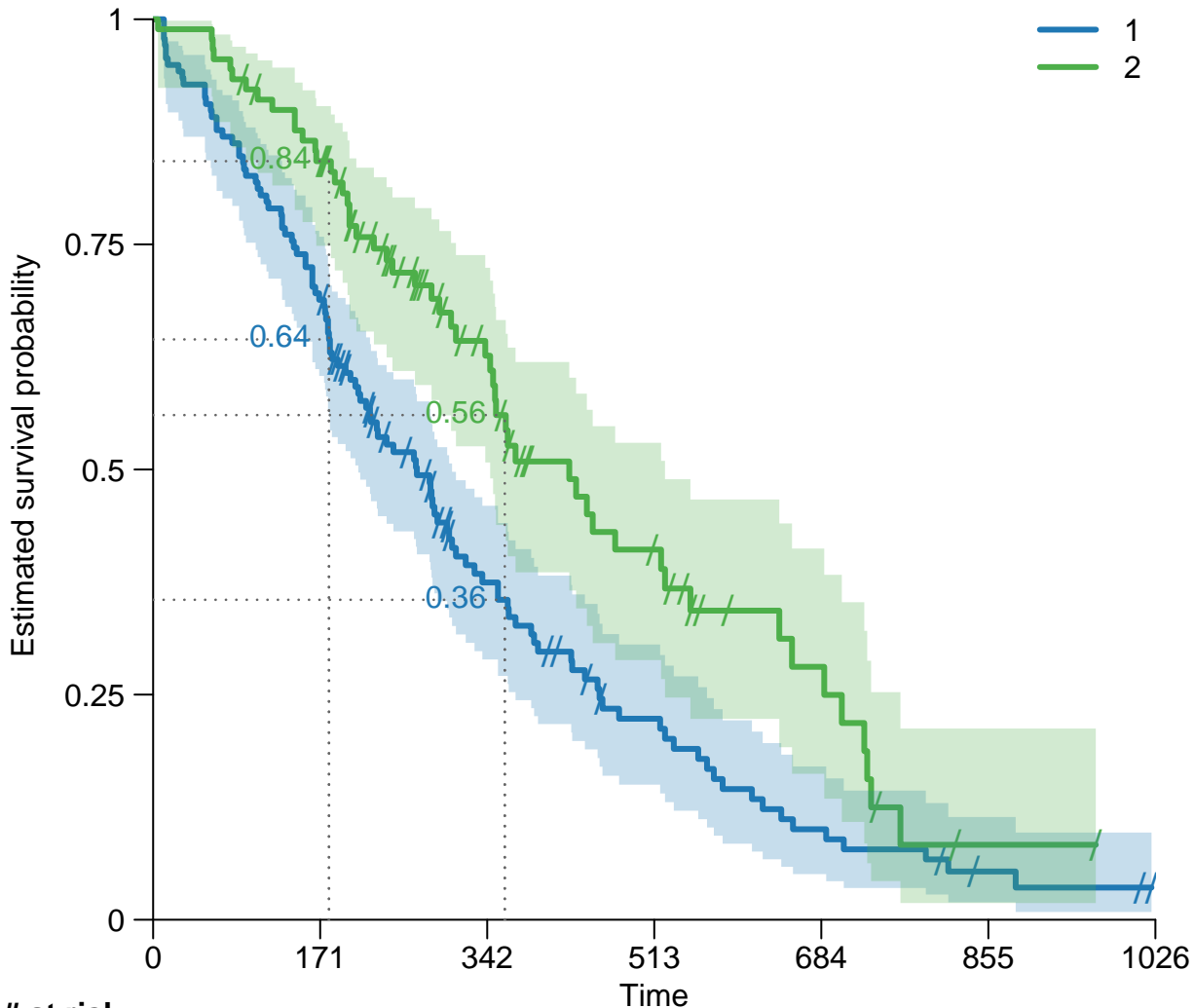
**# at risk**

1	138	95	39	20	9	3	0
2	90	74	38	19	9	1	0



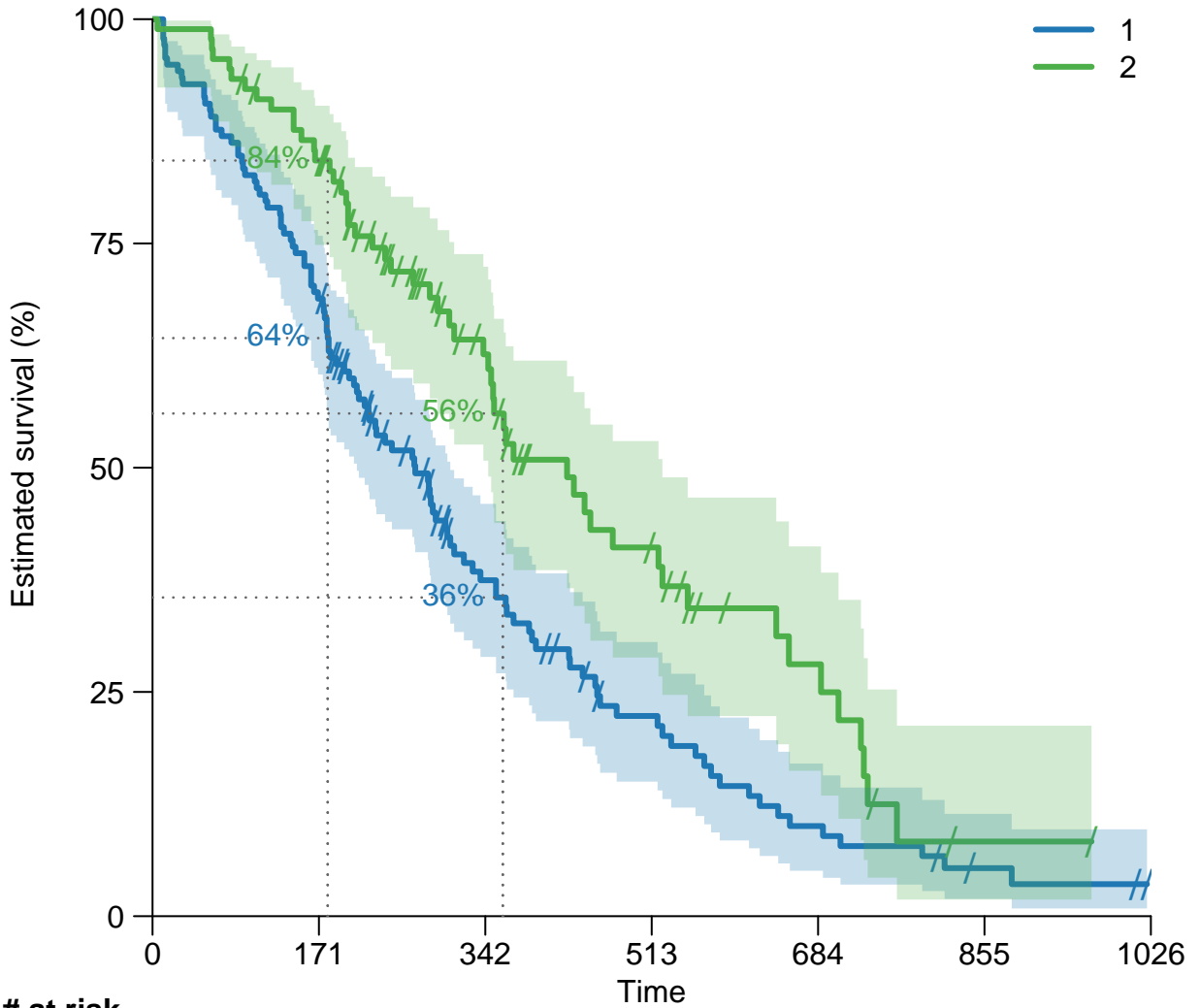
**# at risk**

1	138	95	39	20	9	3	0
2	90	74	38	19	9	1	0



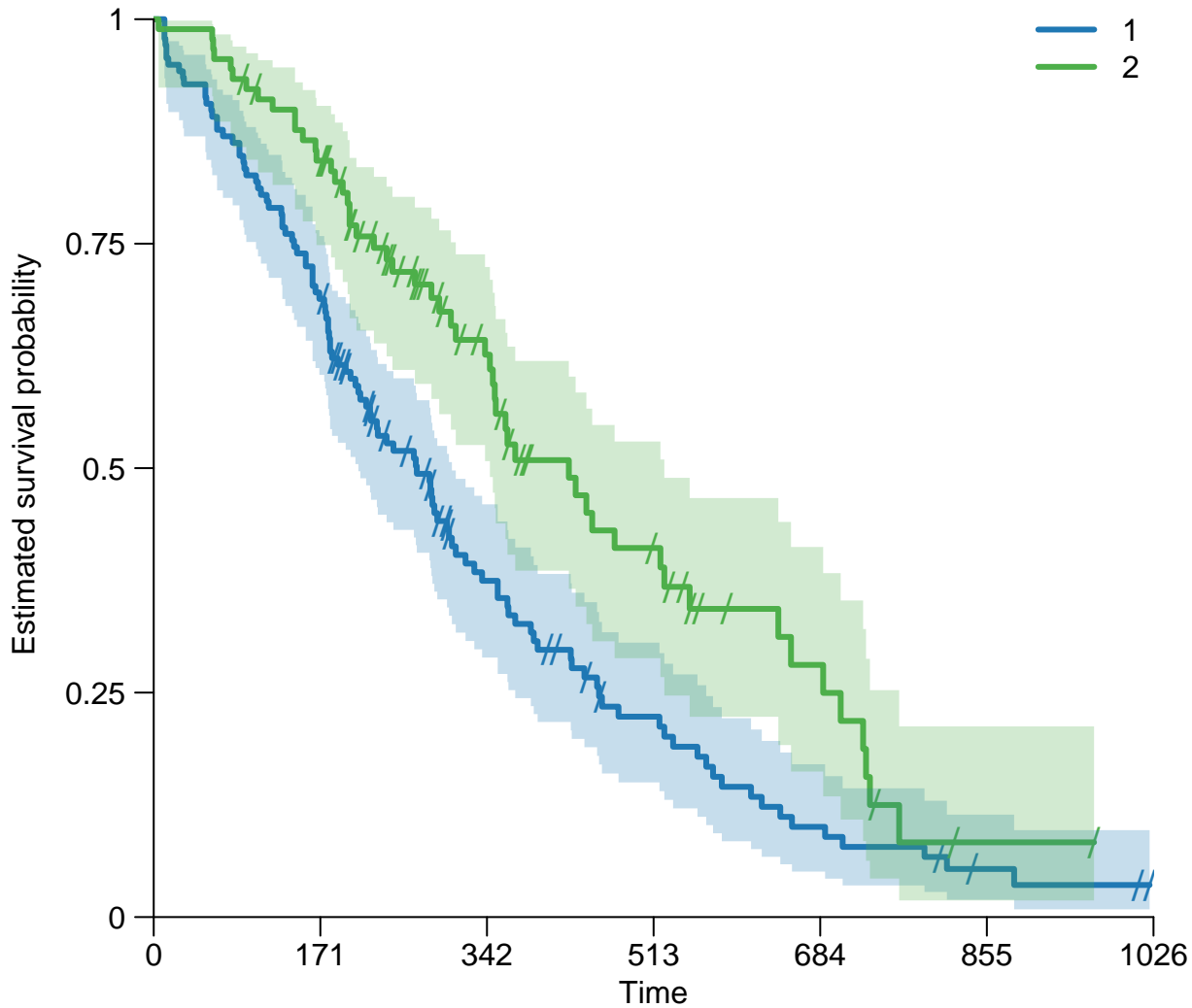
**# at risk**

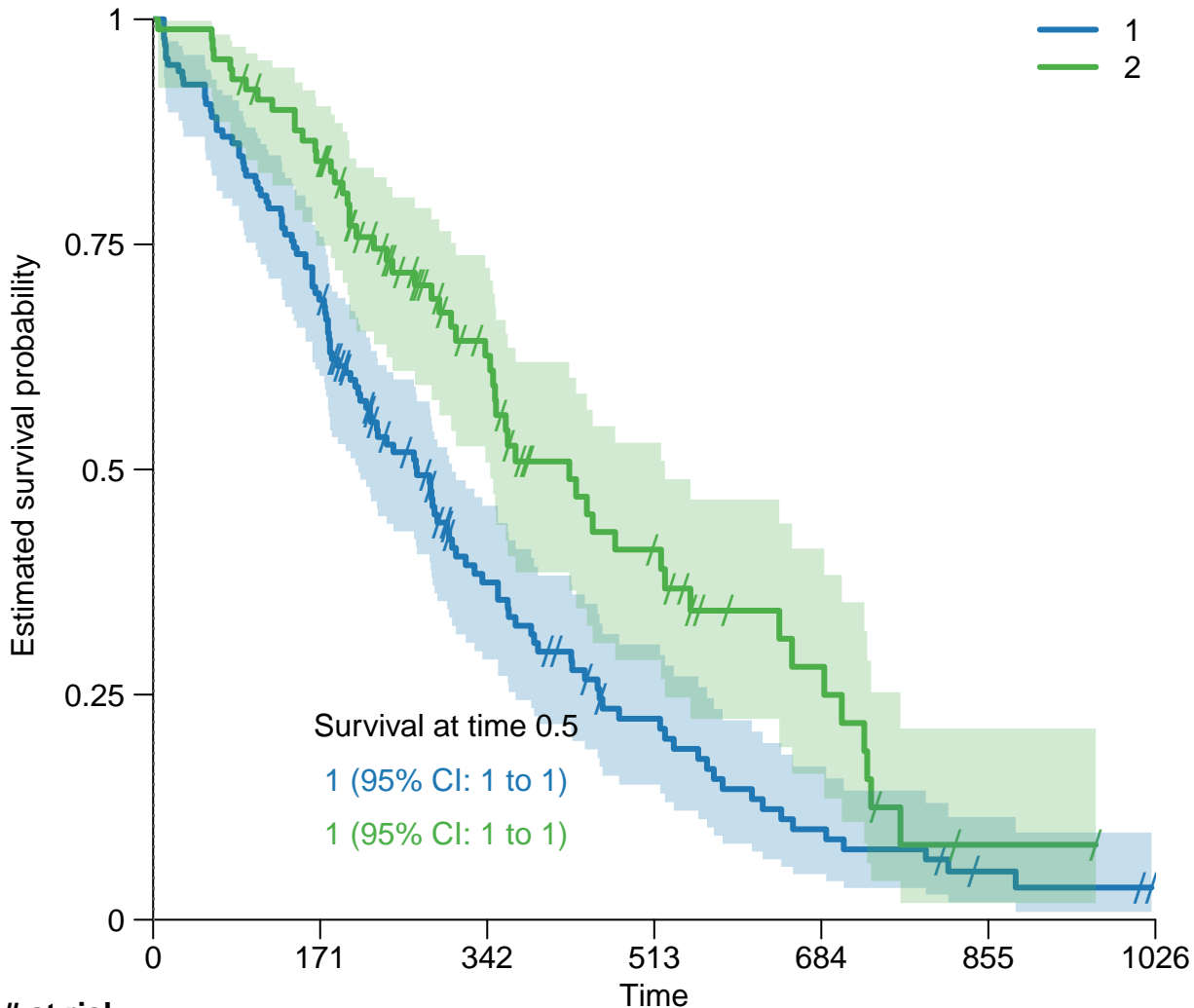
1	138	95	39	20	9	3	0
2	90	74	38	19	9	1	0



**# at risk**

1	138	95	39	20	9	3	0
2	90	74	38	19	9	1	0

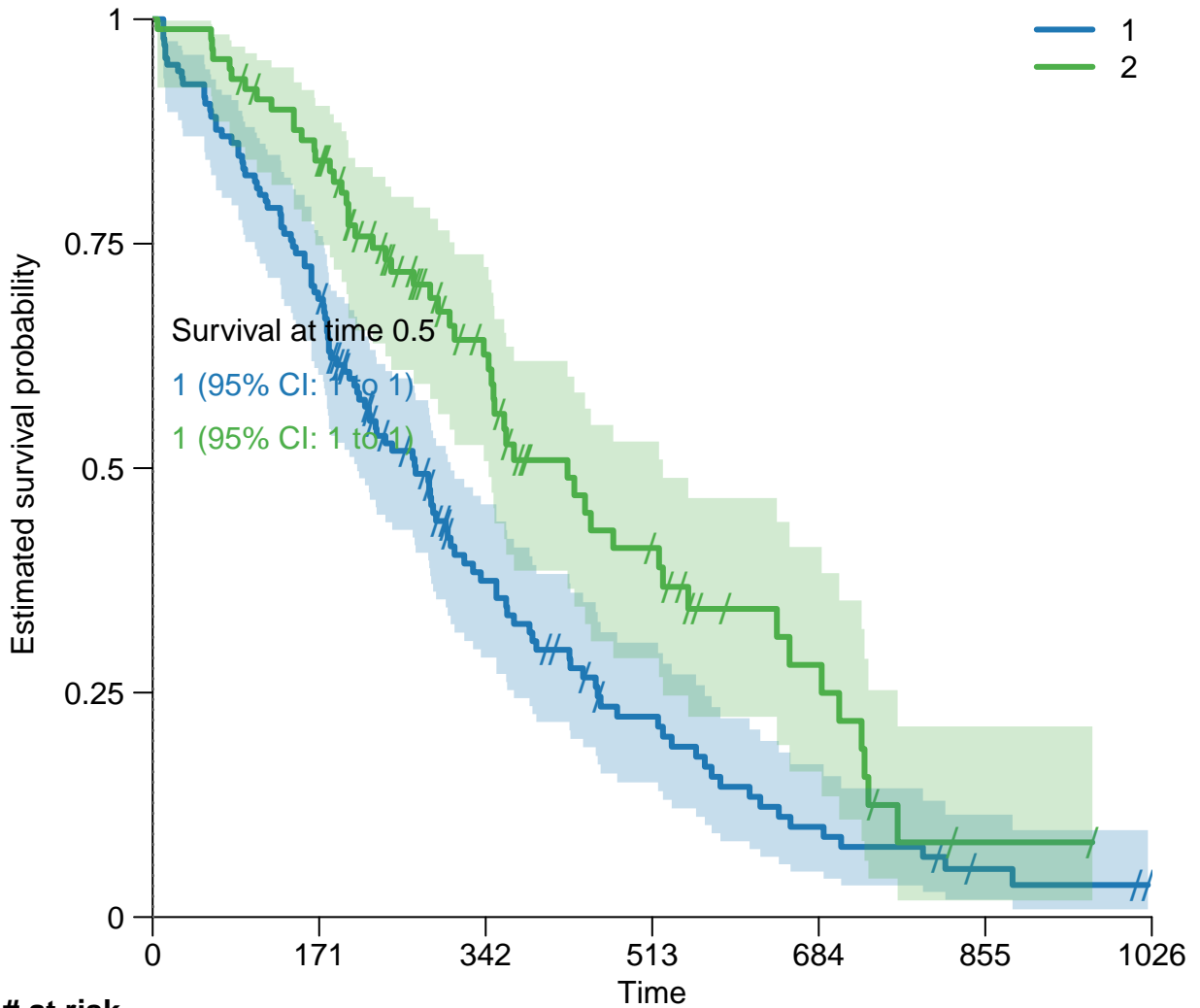




**# at risk**

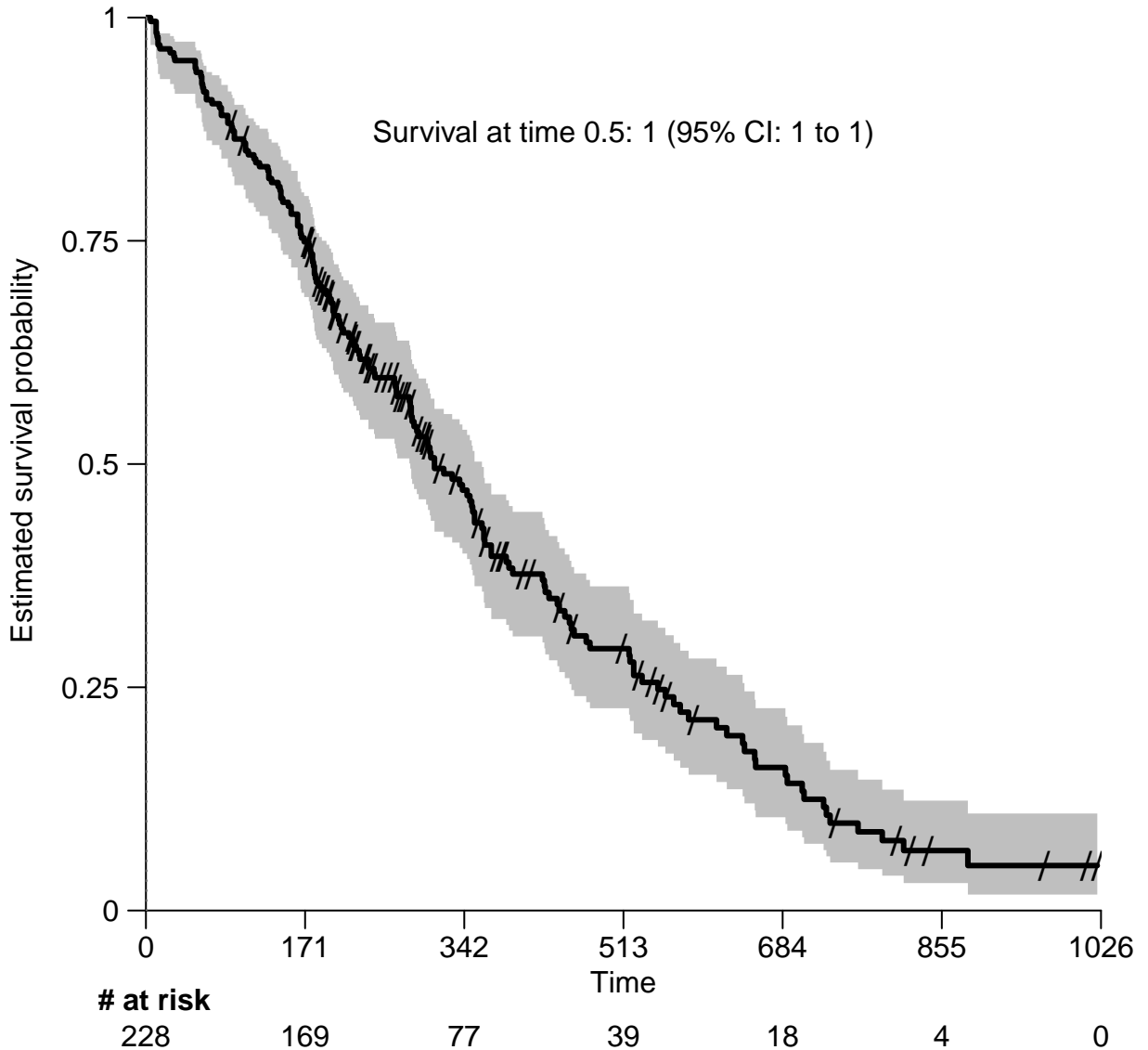
1	138	95	39	20	9	3	0
2	90	74	38	19	9	1	0

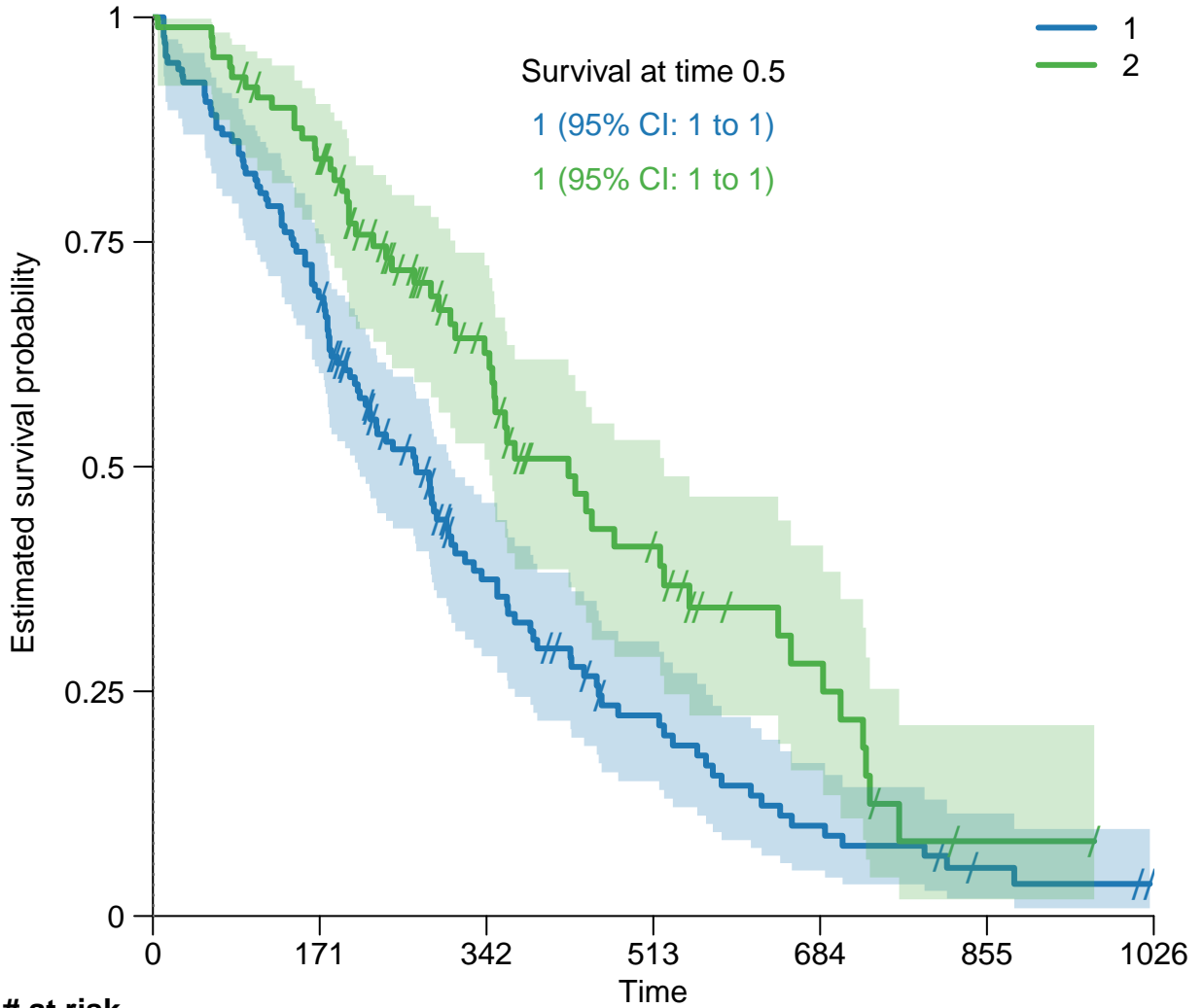




# at risk

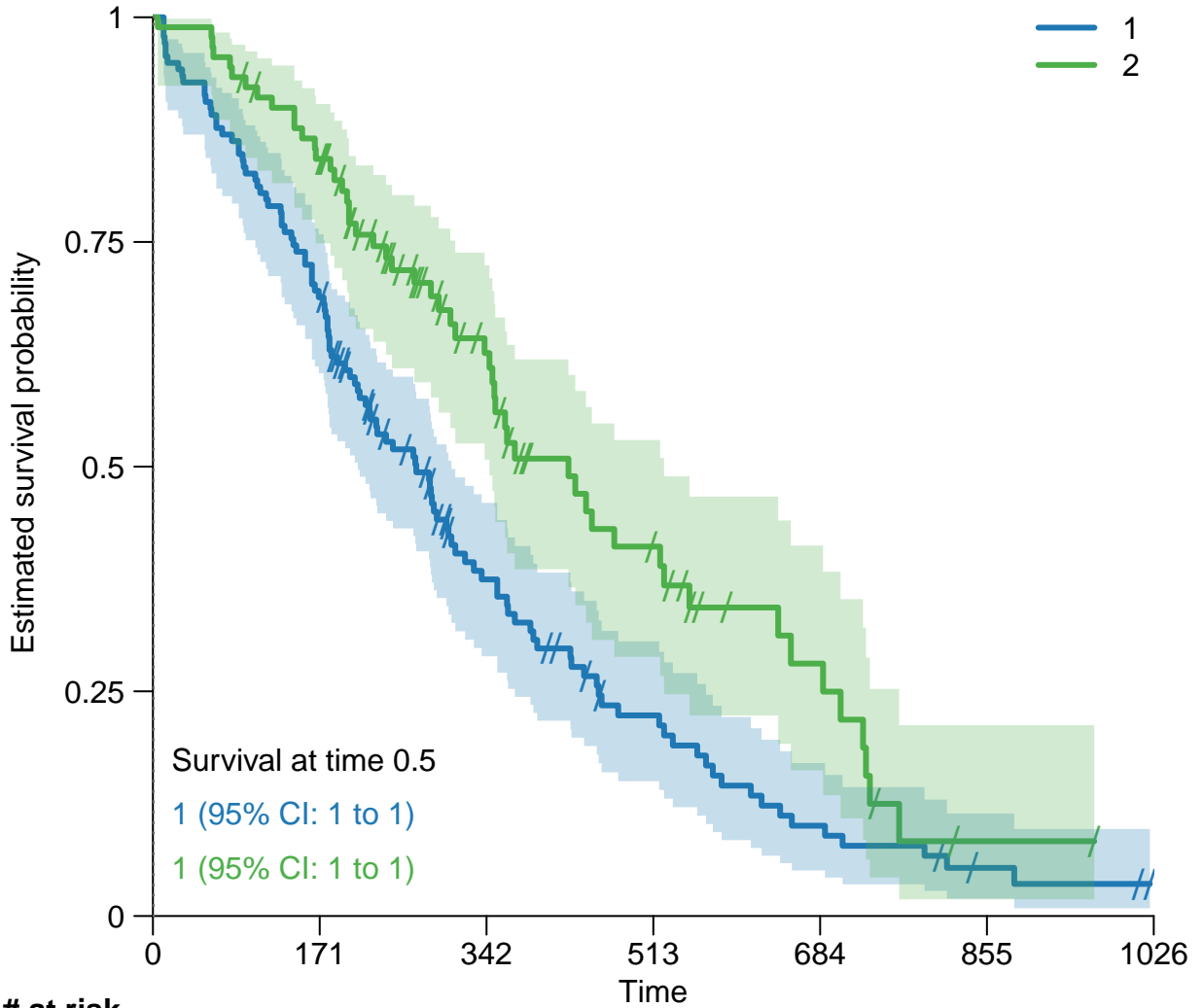
	0	171	342	513	684	855	1026
1	138	95	39	20	9	3	0
2	90	74	38	19	9	1	0





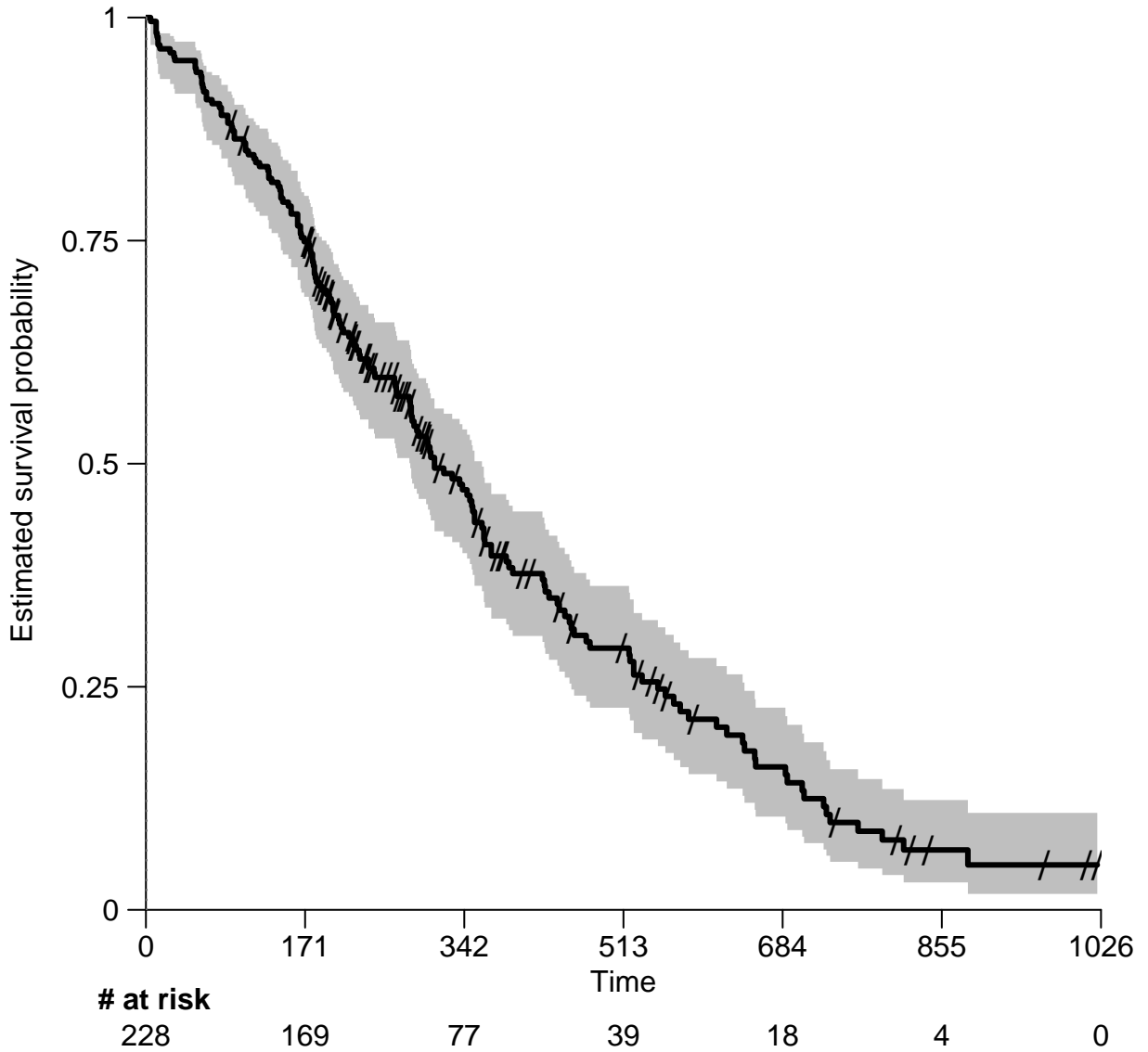
**# at risk**

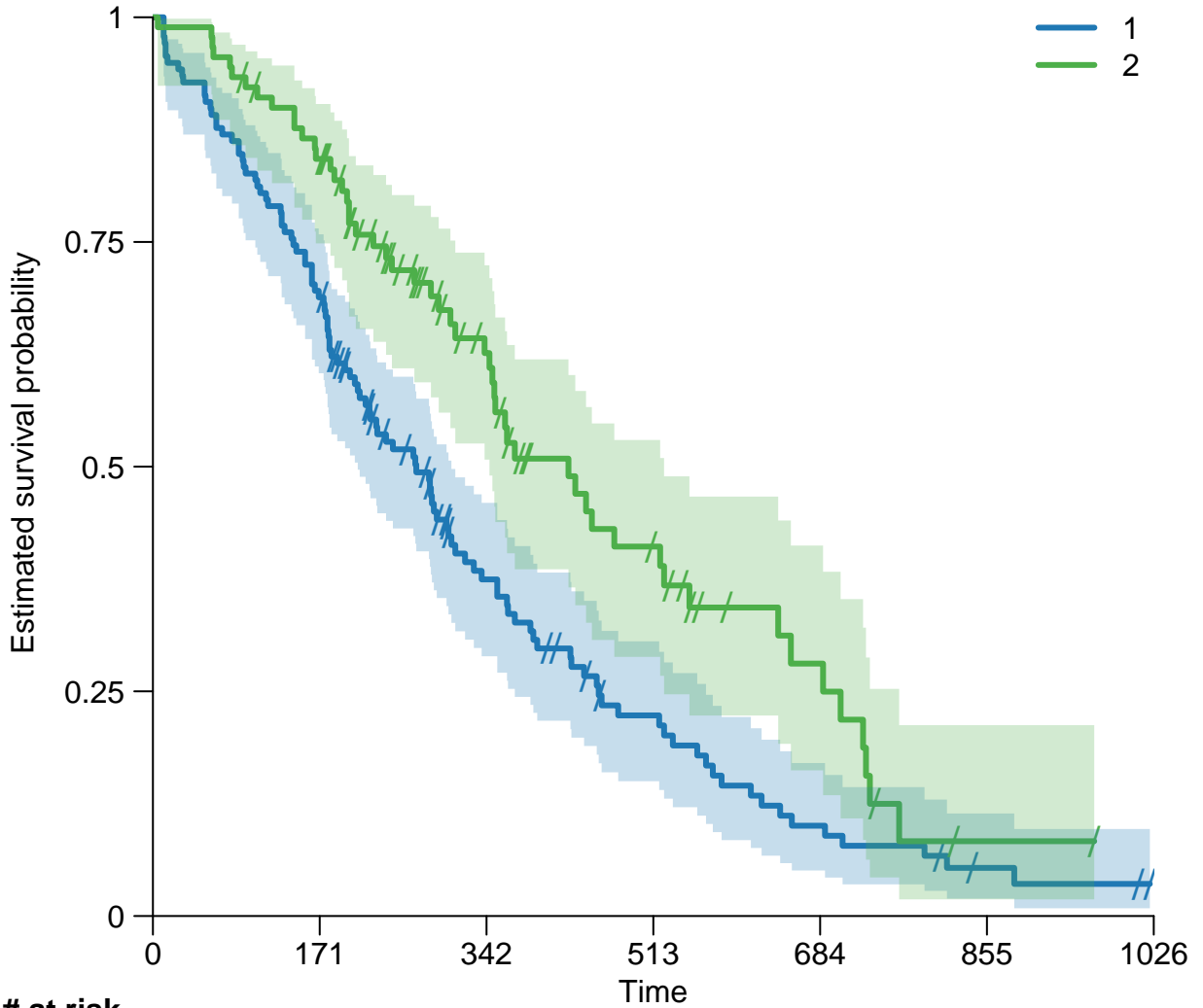
1	138	95	39	20	9	3	0
2	90	74	38	19	9	1	0



# at risk

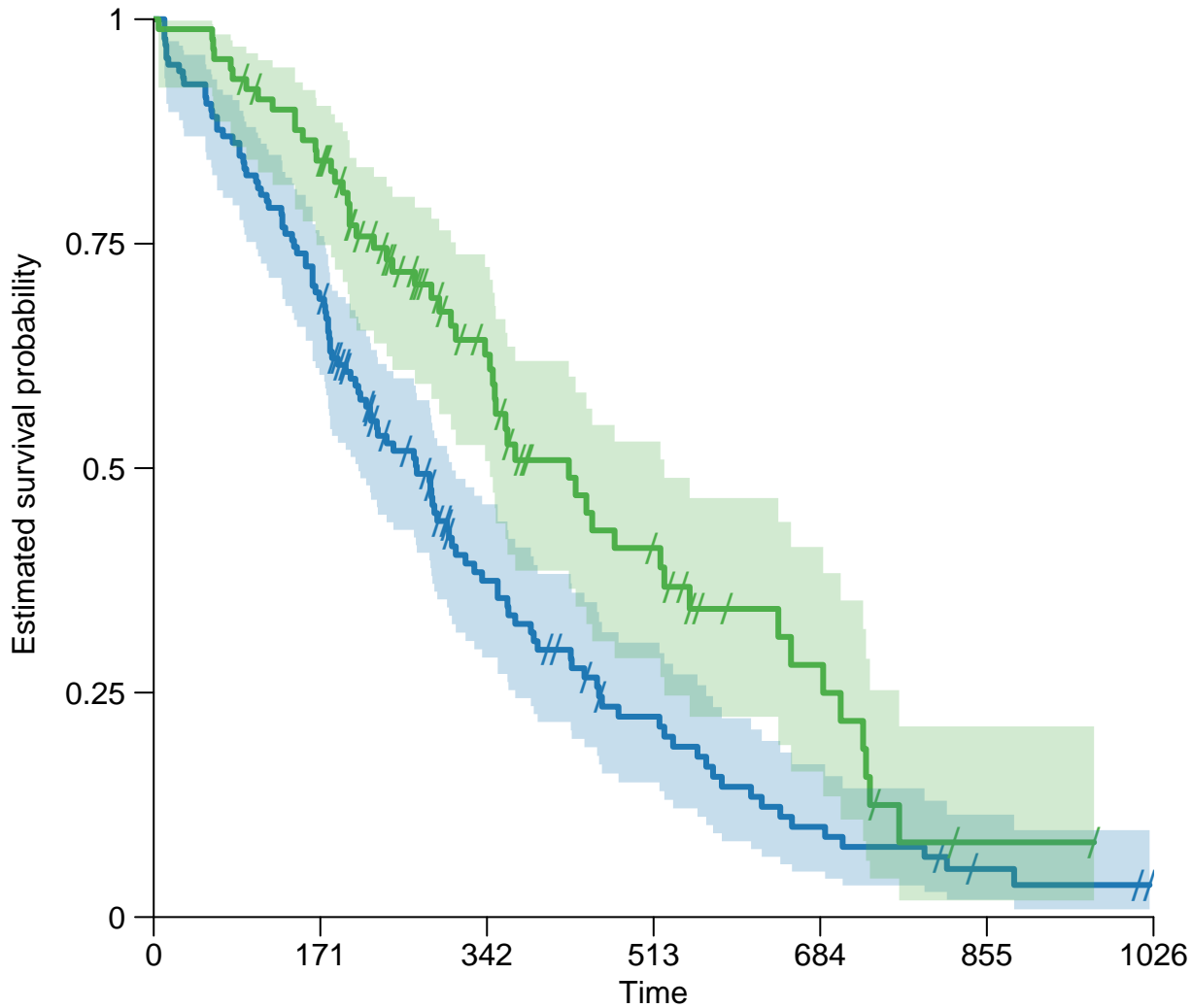
	0	171	342	513	684	855	1026
1	138	95	39	20	9	3	0
2	90	74	38	19	9	1	0

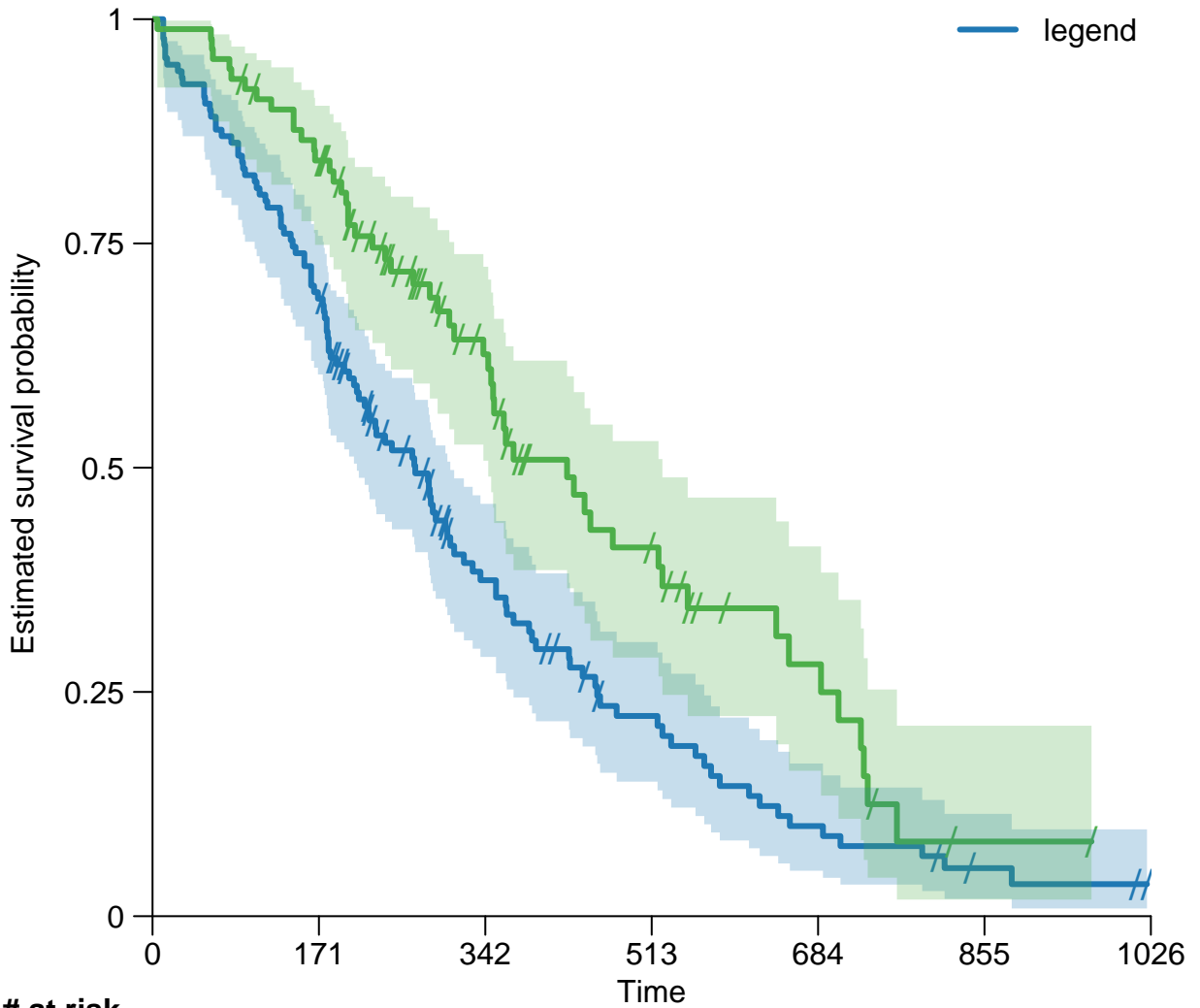




**# at risk**

1	138	95	39	20	9	3	0
2	90	74	38	19	9	1	0

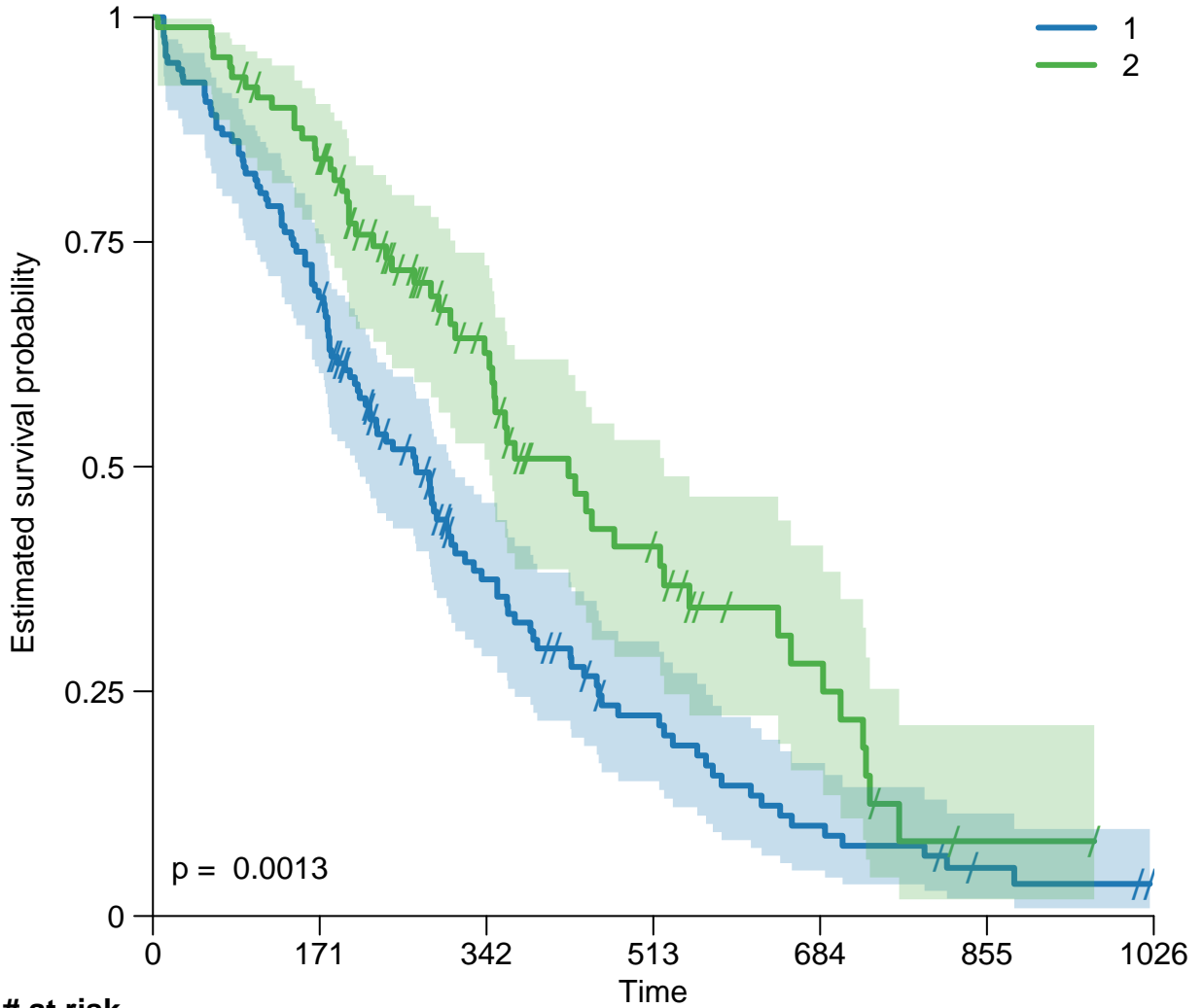




**# at risk**

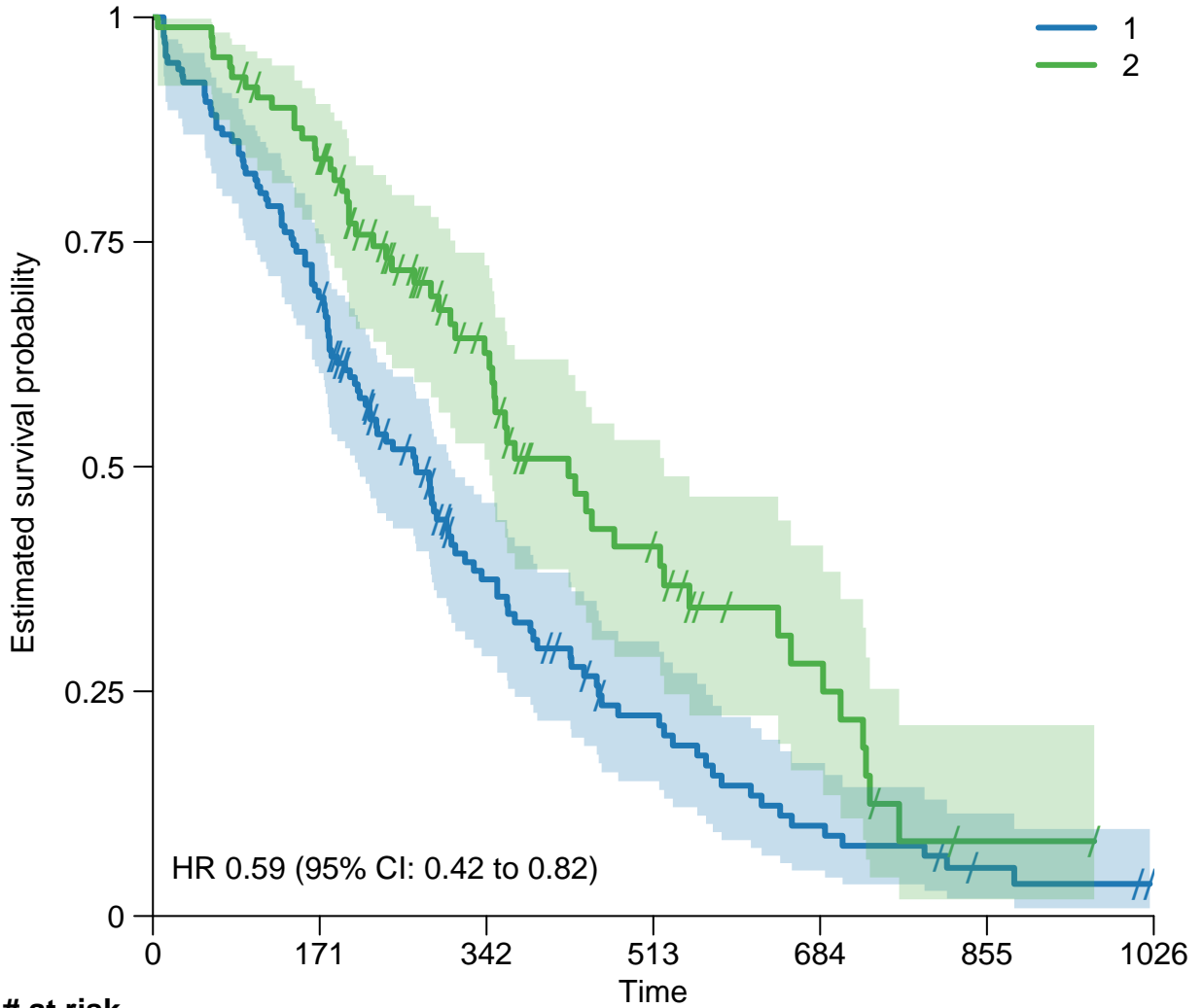
legend	138	95	39	20	9	3	0
	90	74	38	19	9	1	0





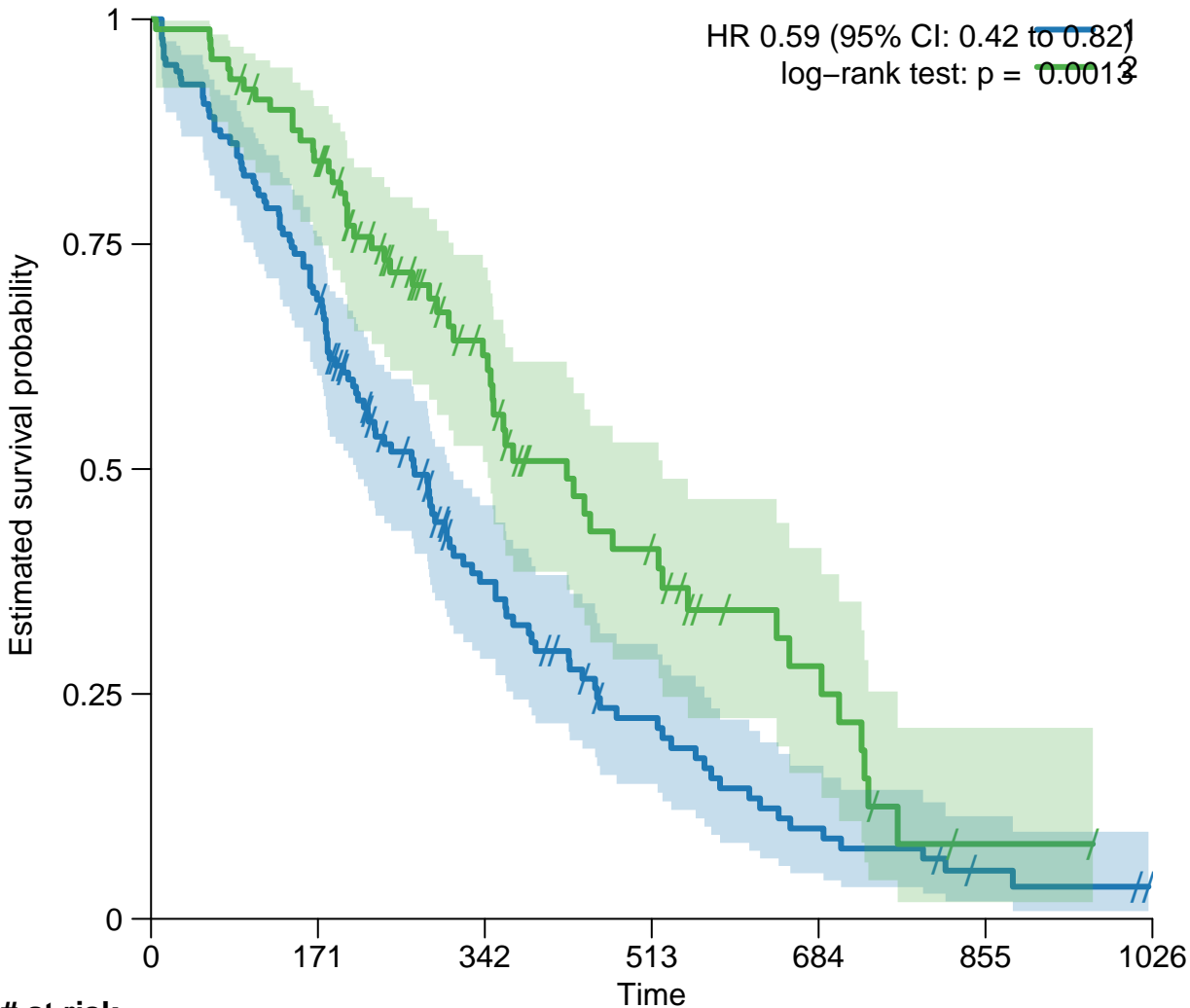
# at risk

1	138	95	39	20	9	3	0
2	90	74	38	19	9	1	0



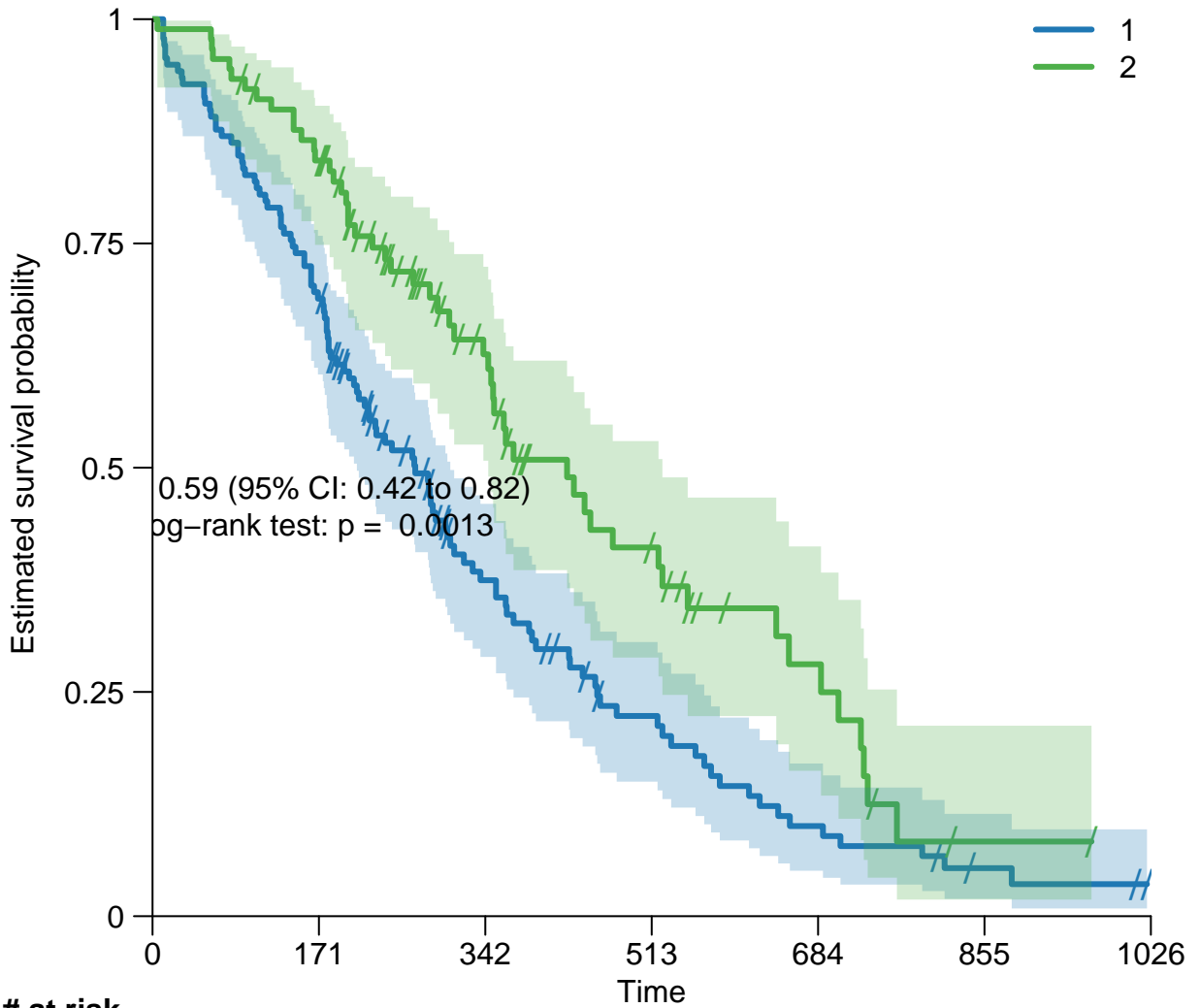
**# at risk**

1	138	95	39	20	9	3	0
2	90	74	38	19	9	1	0



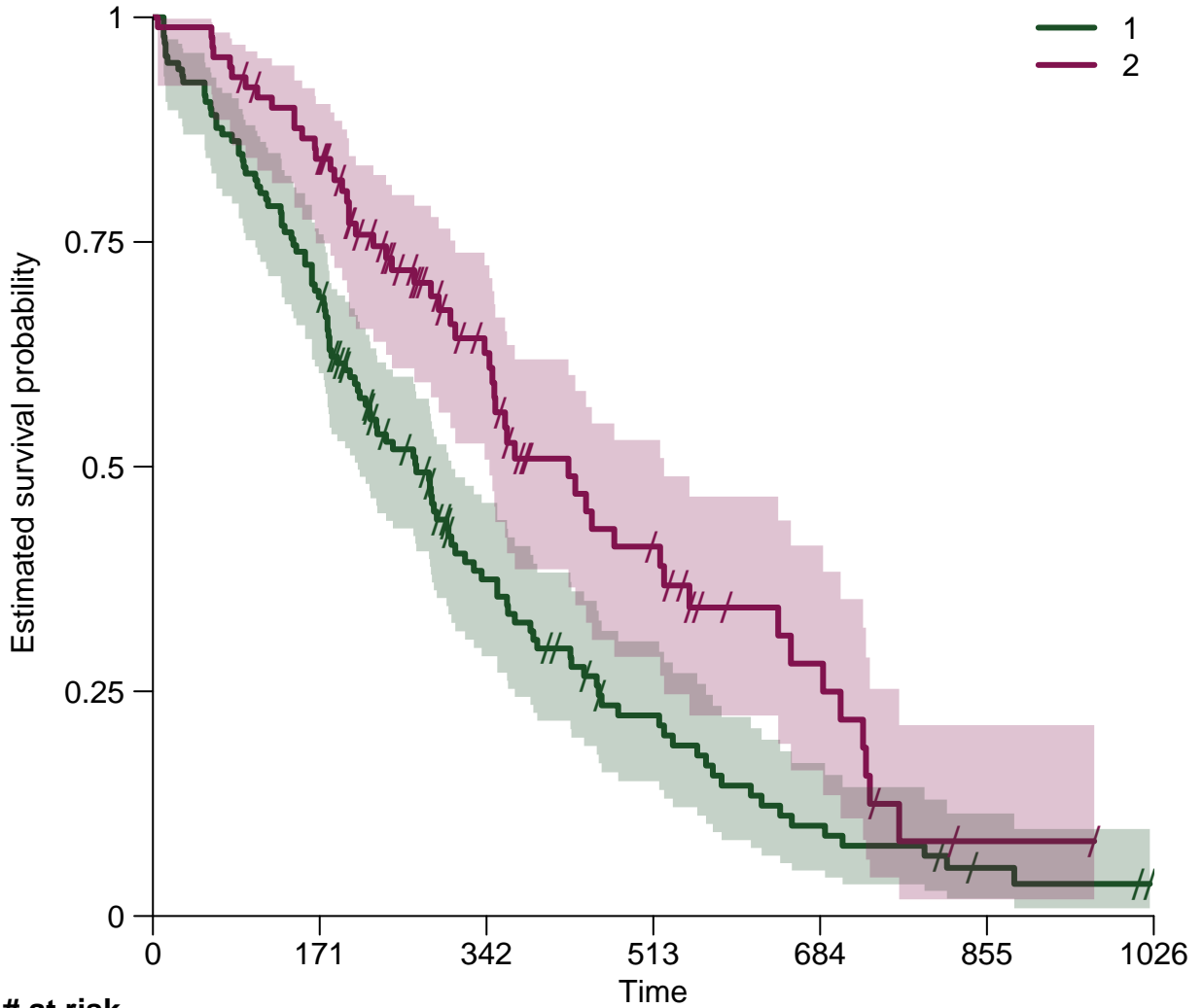
# at risk

1	138	95	39	20	9	3	0
2	90	74	38	19	9	1	0



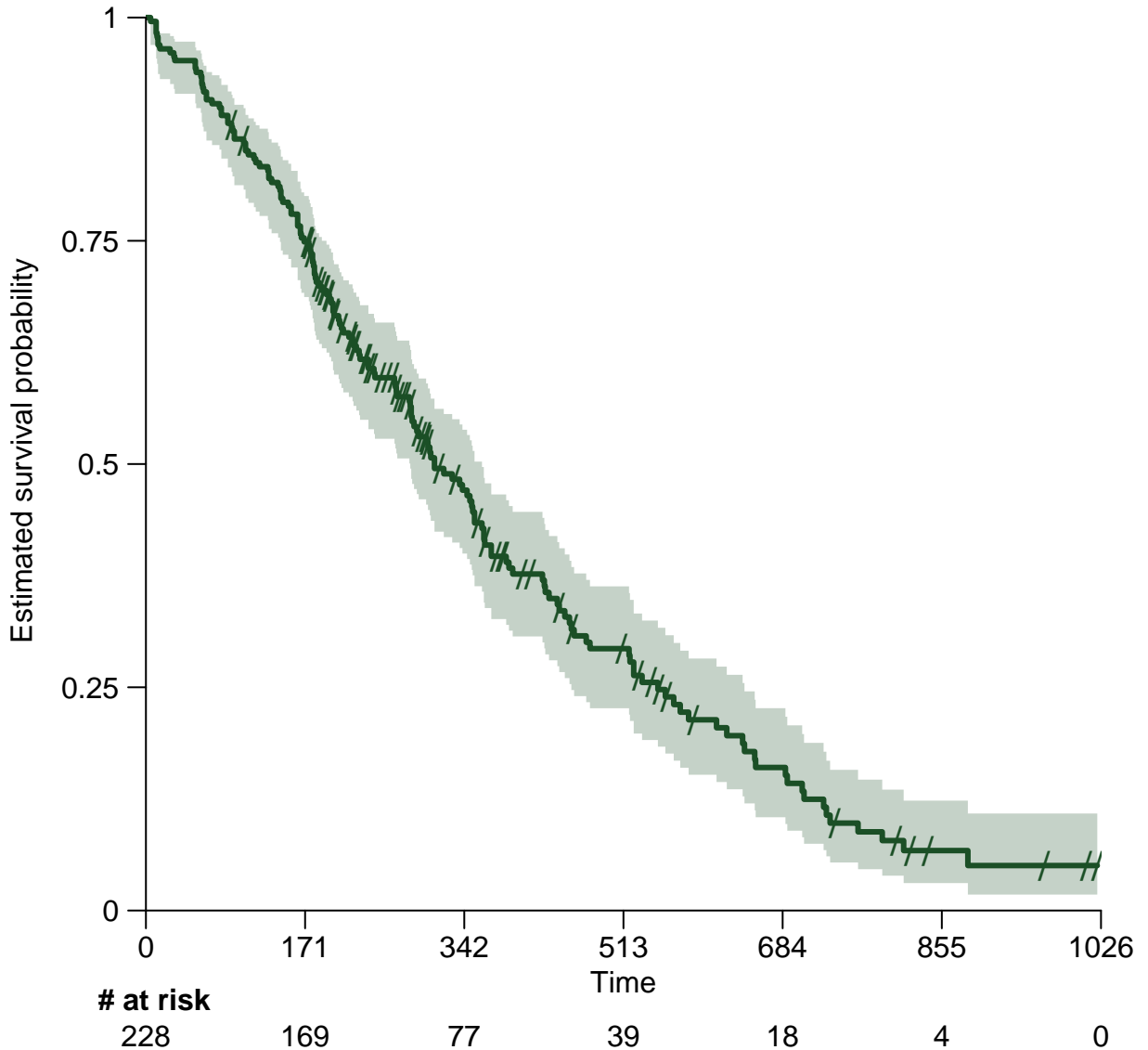
**# at risk**

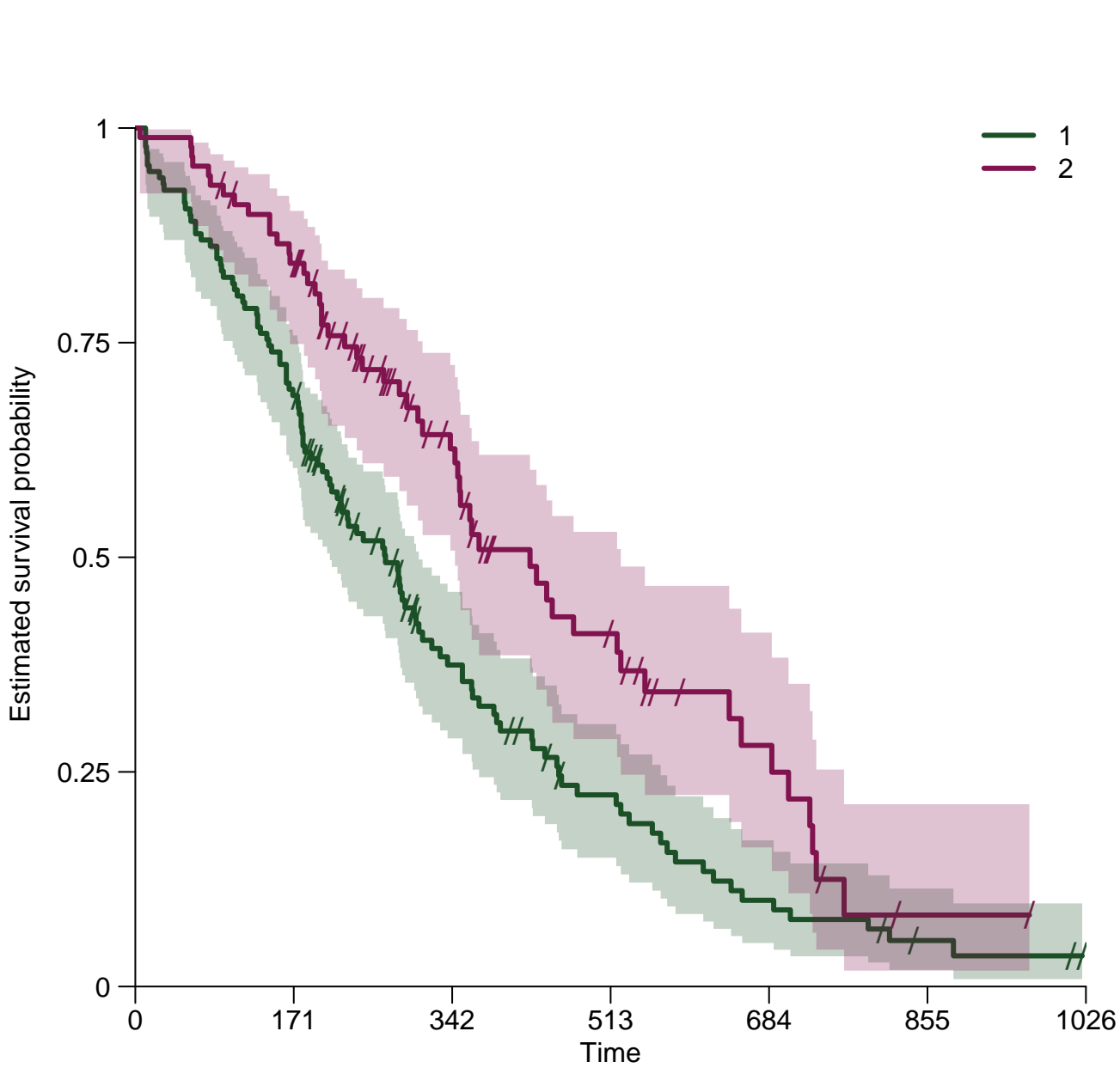
1	138	95	39	20	9	3	0
2	90	74	38	19	9	1	0

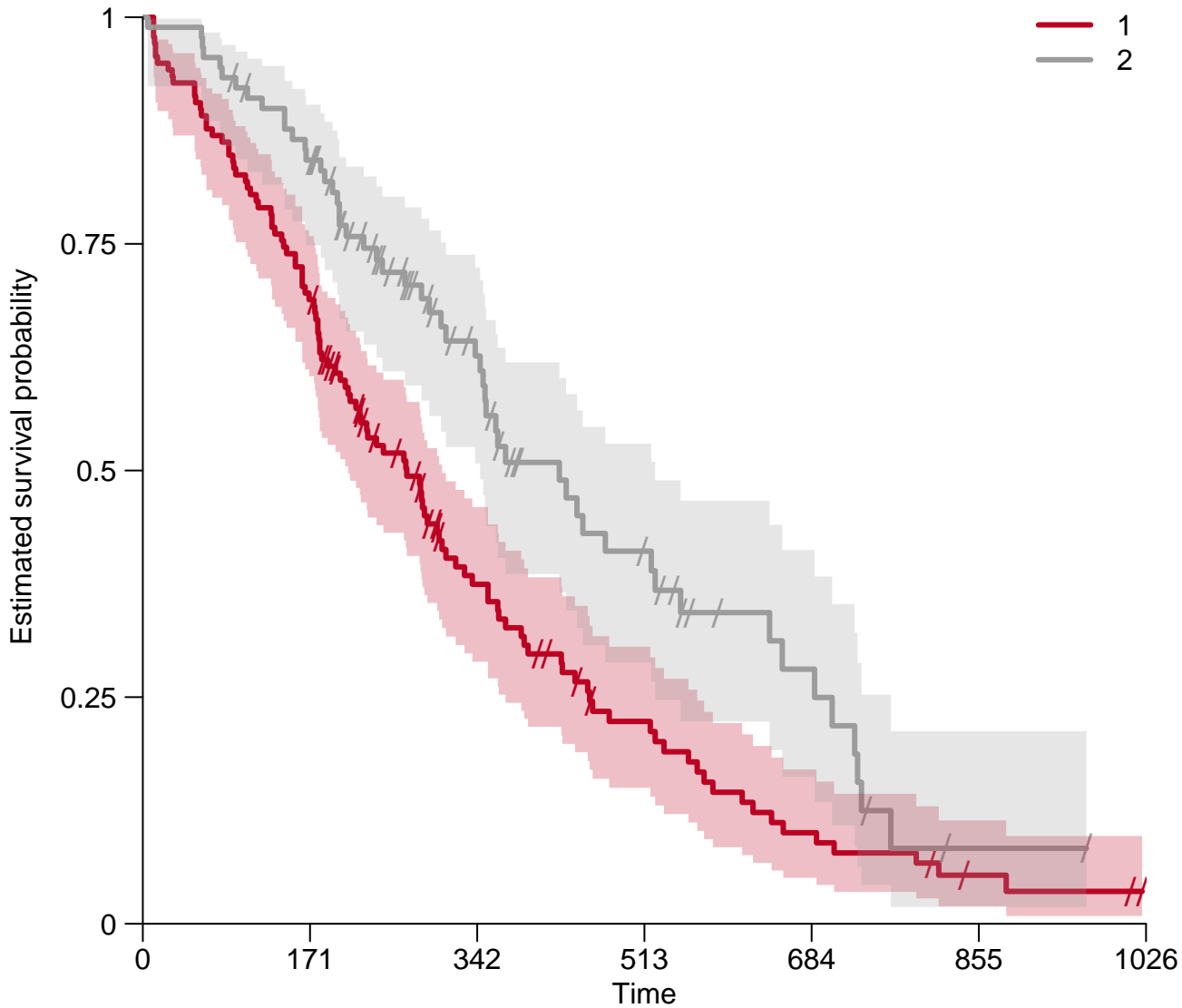


**# at risk**

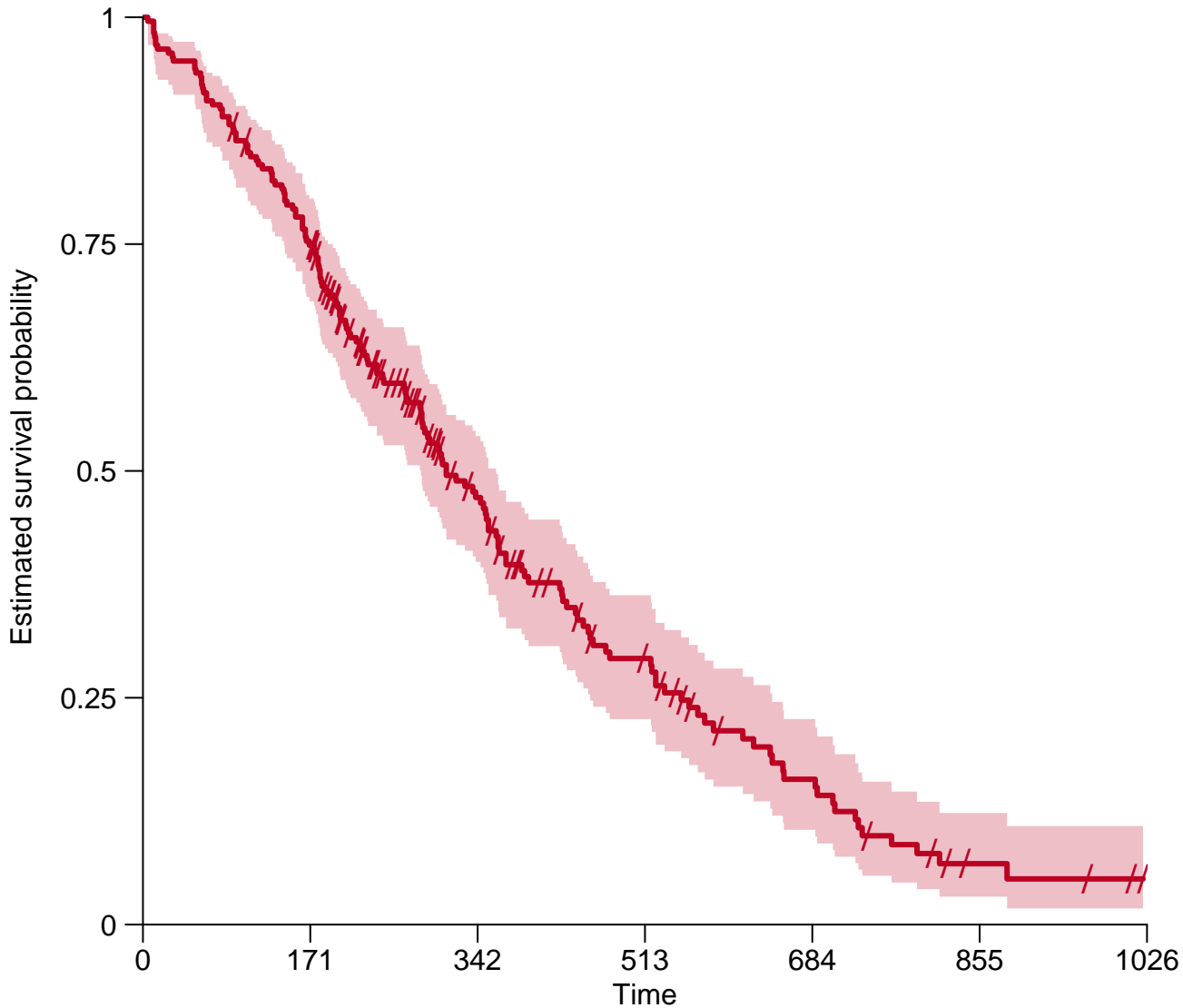
1	138	95	39	20	9	3	0
2	90	74	38	19	9	1	0

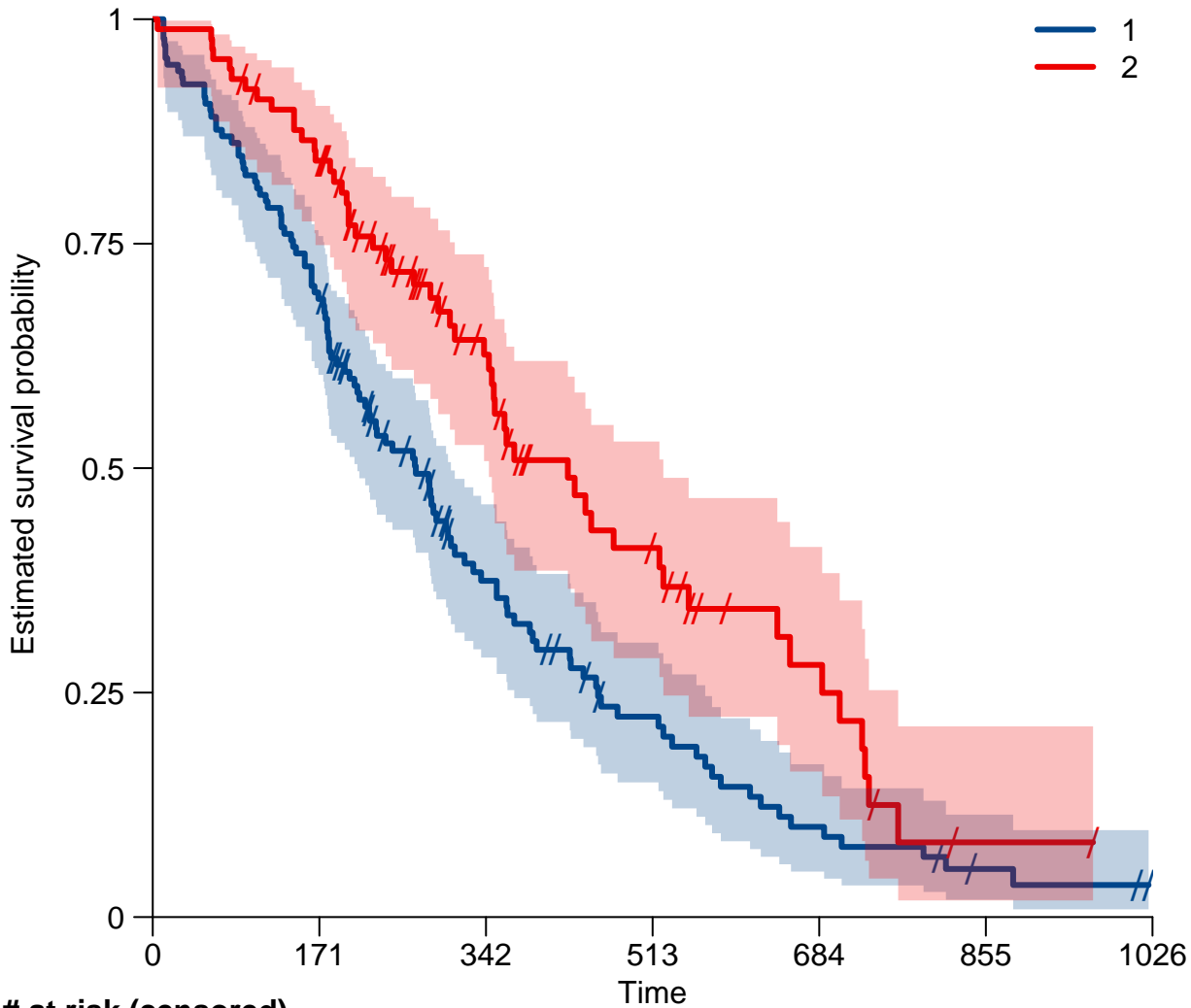






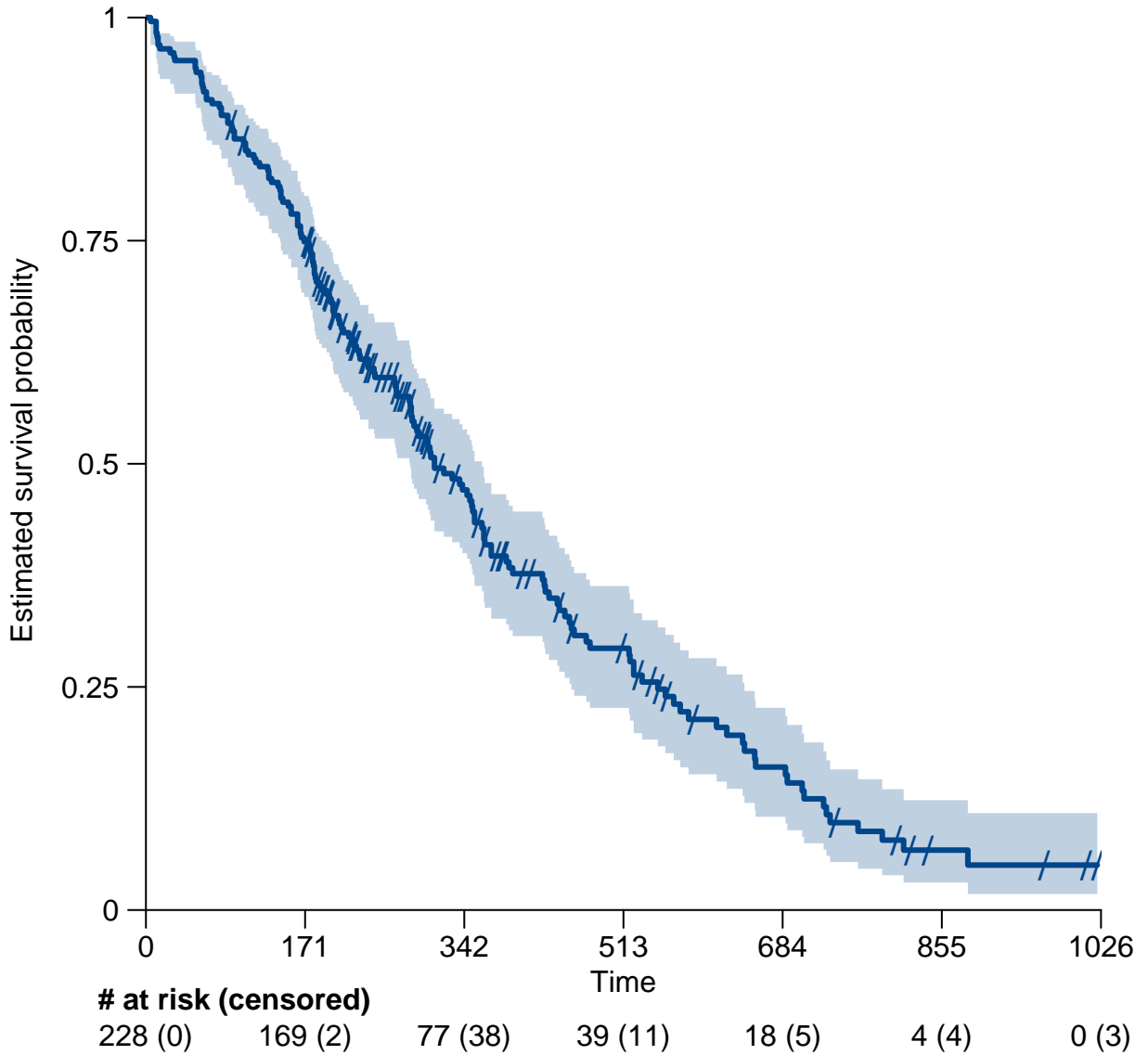


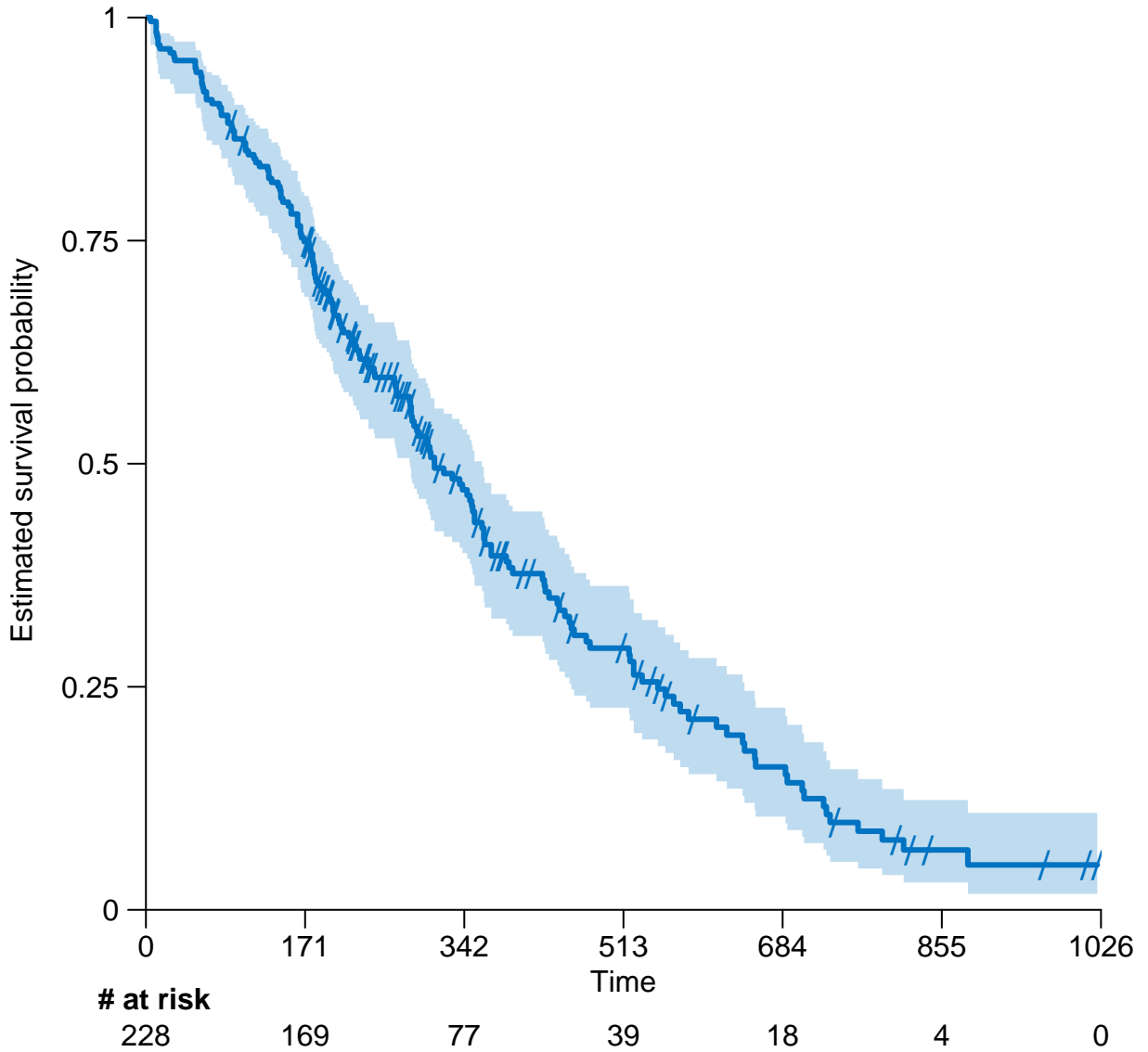


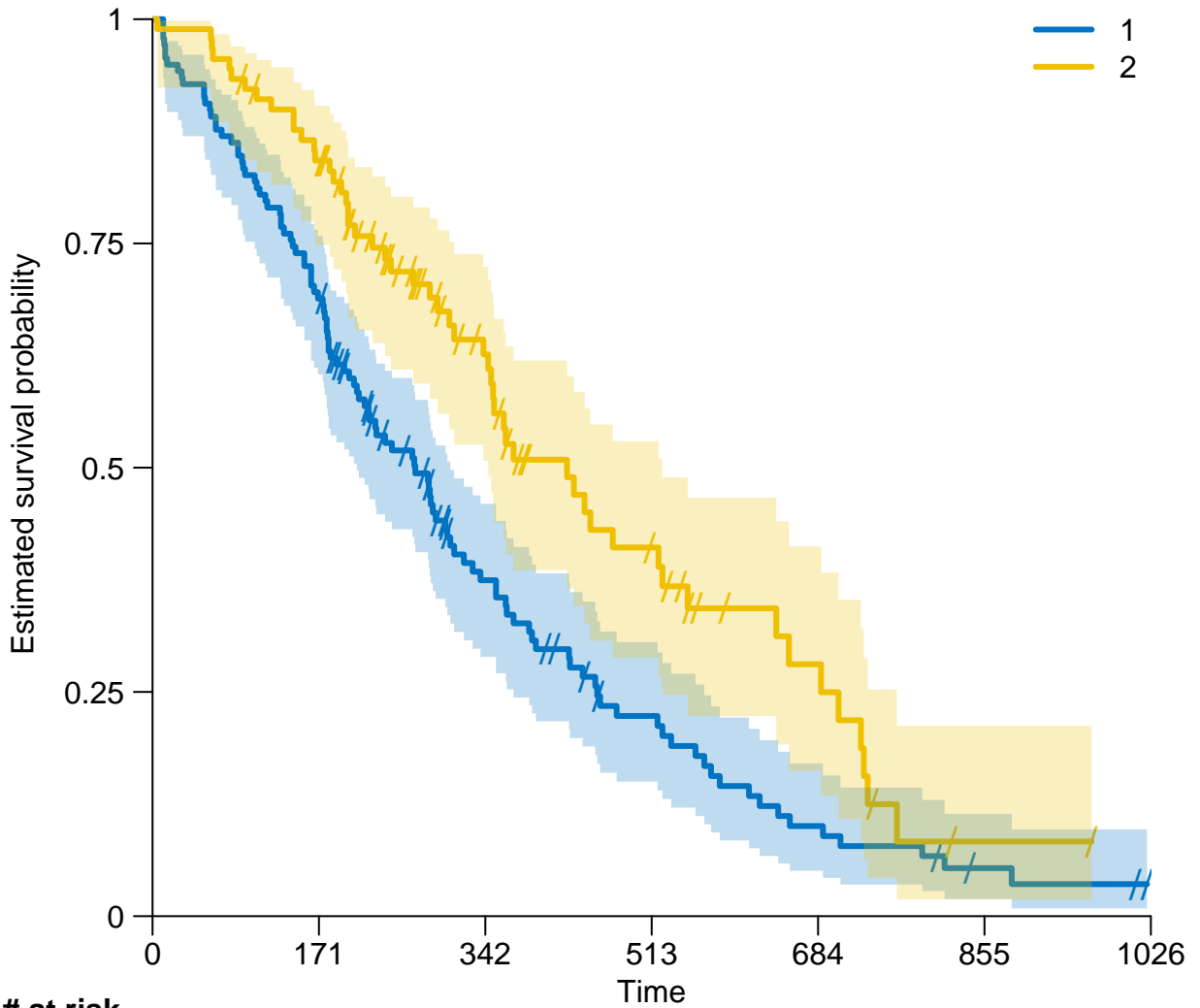


**# at risk (censored)**

1	138 (0)	95 (0)	39 (18)	20 (4)	9 (0)	3 (2)	0 (2)
2	90 (0)	74 (2)	38 (20)	19 (7)	9 (5)	1 (2)	0 (1)

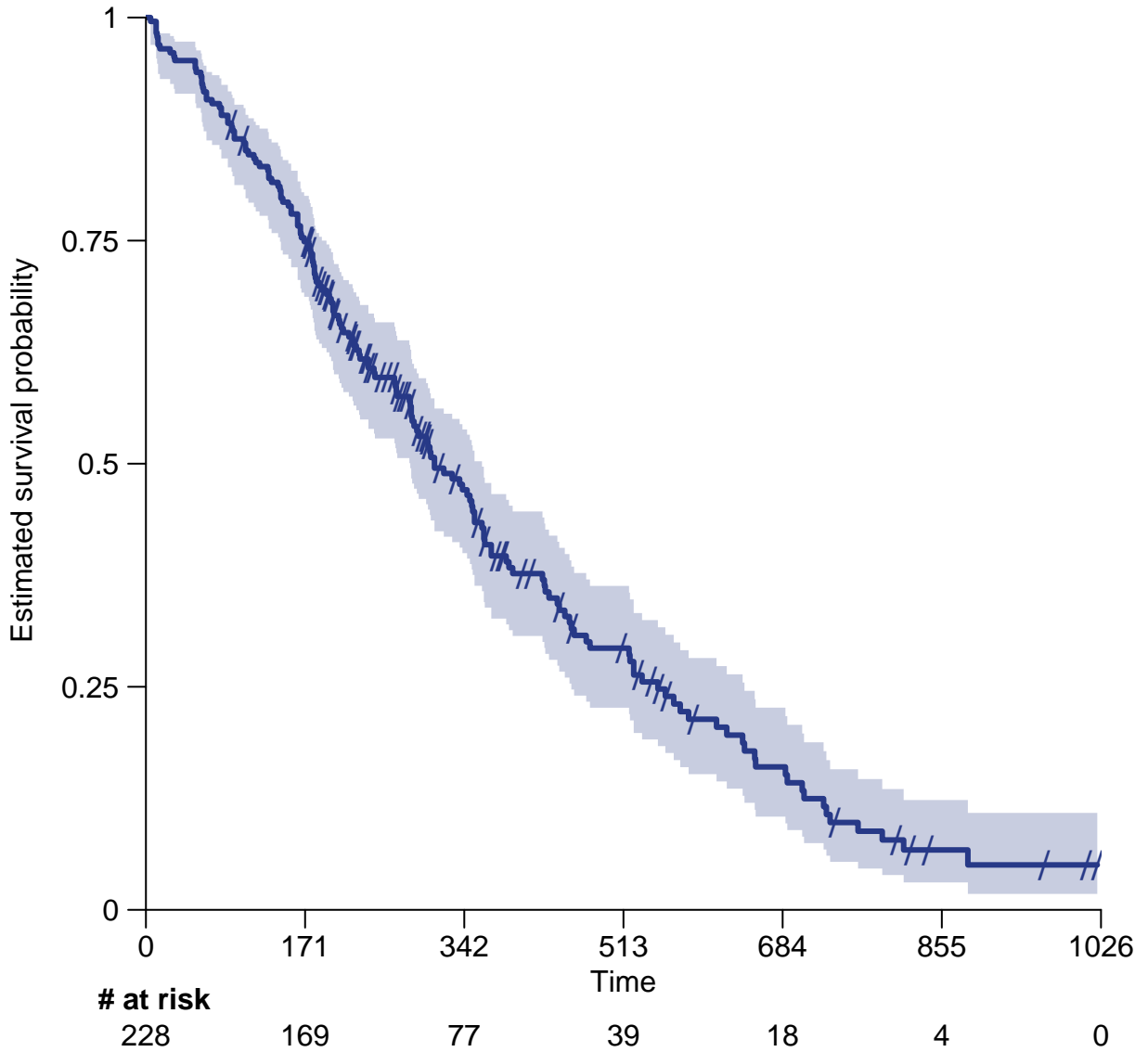


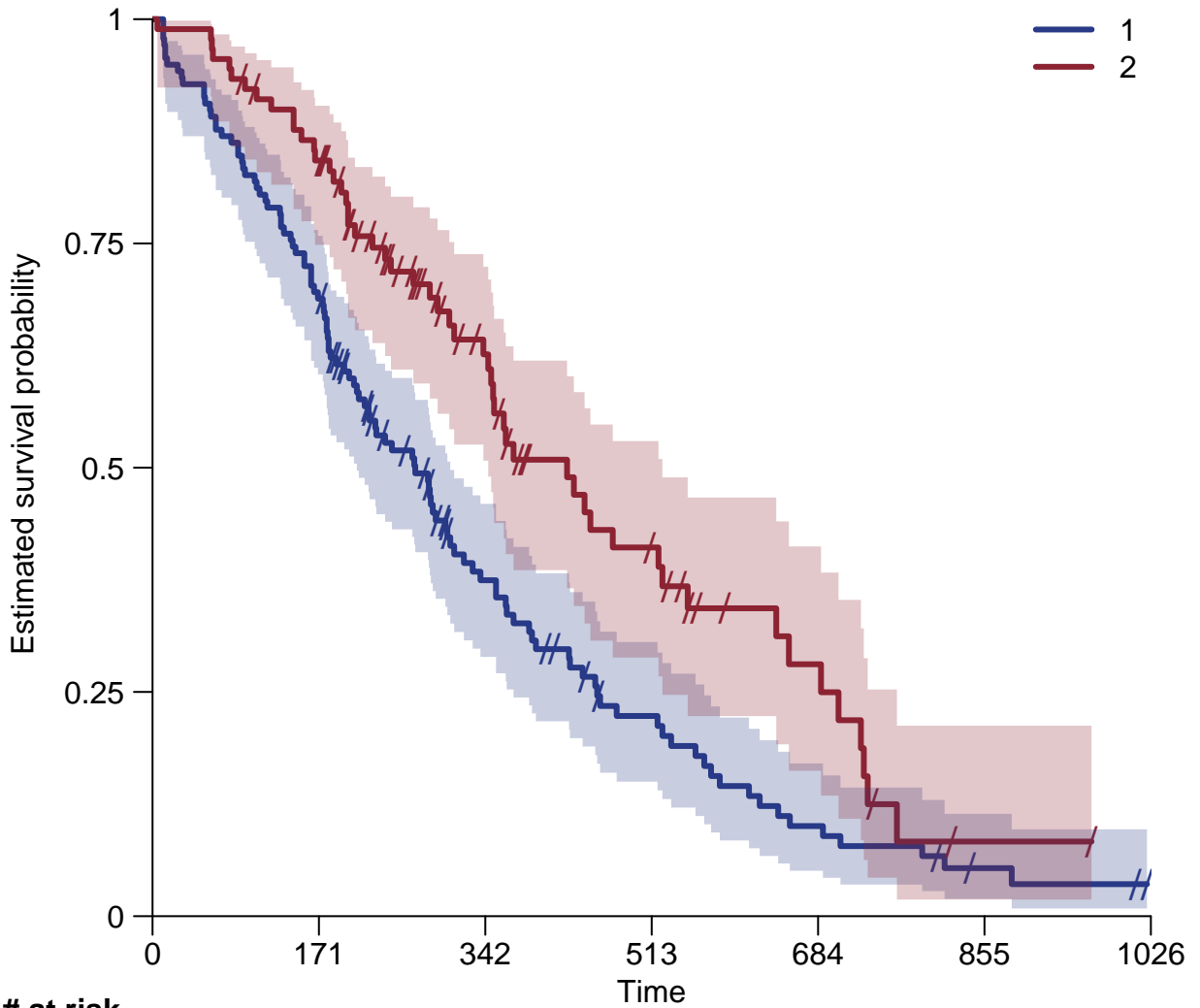




**# at risk**

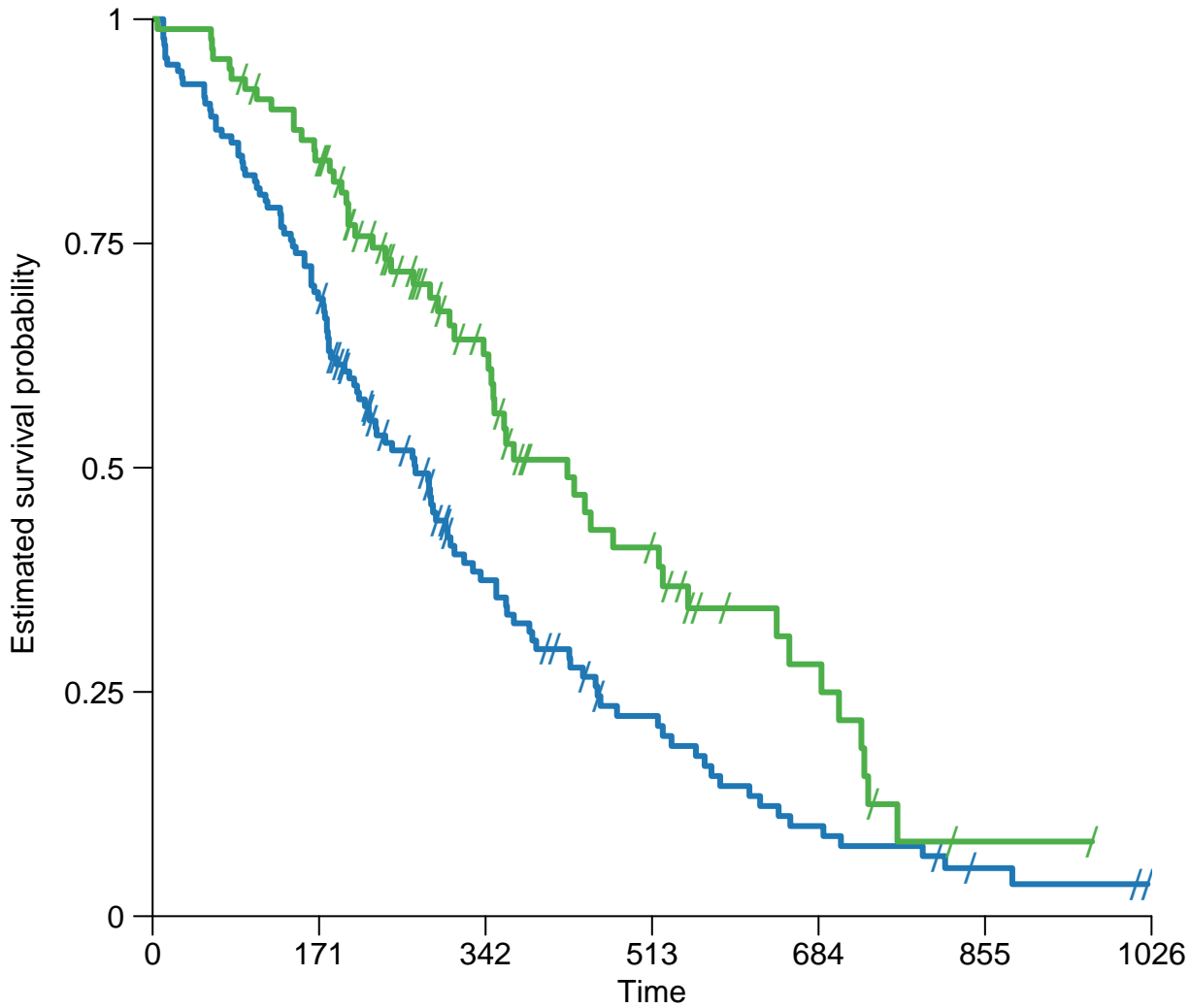
1	138	95	39	20	9	3	0
2	90	74	38	19	9	1	0



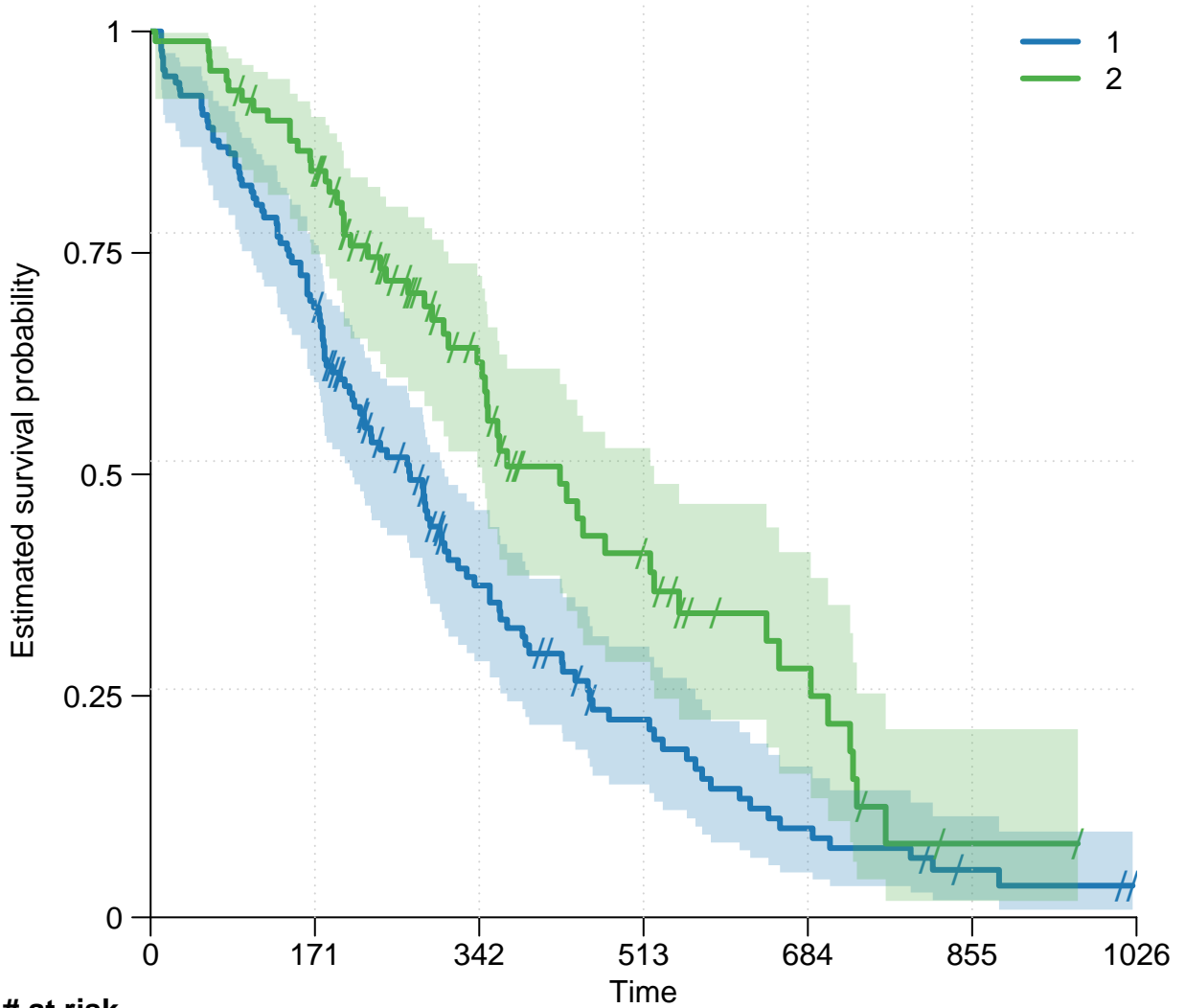


**# at risk**

1	138	95	39	20	9	3	0
2	90	74	38	19	9	1	0

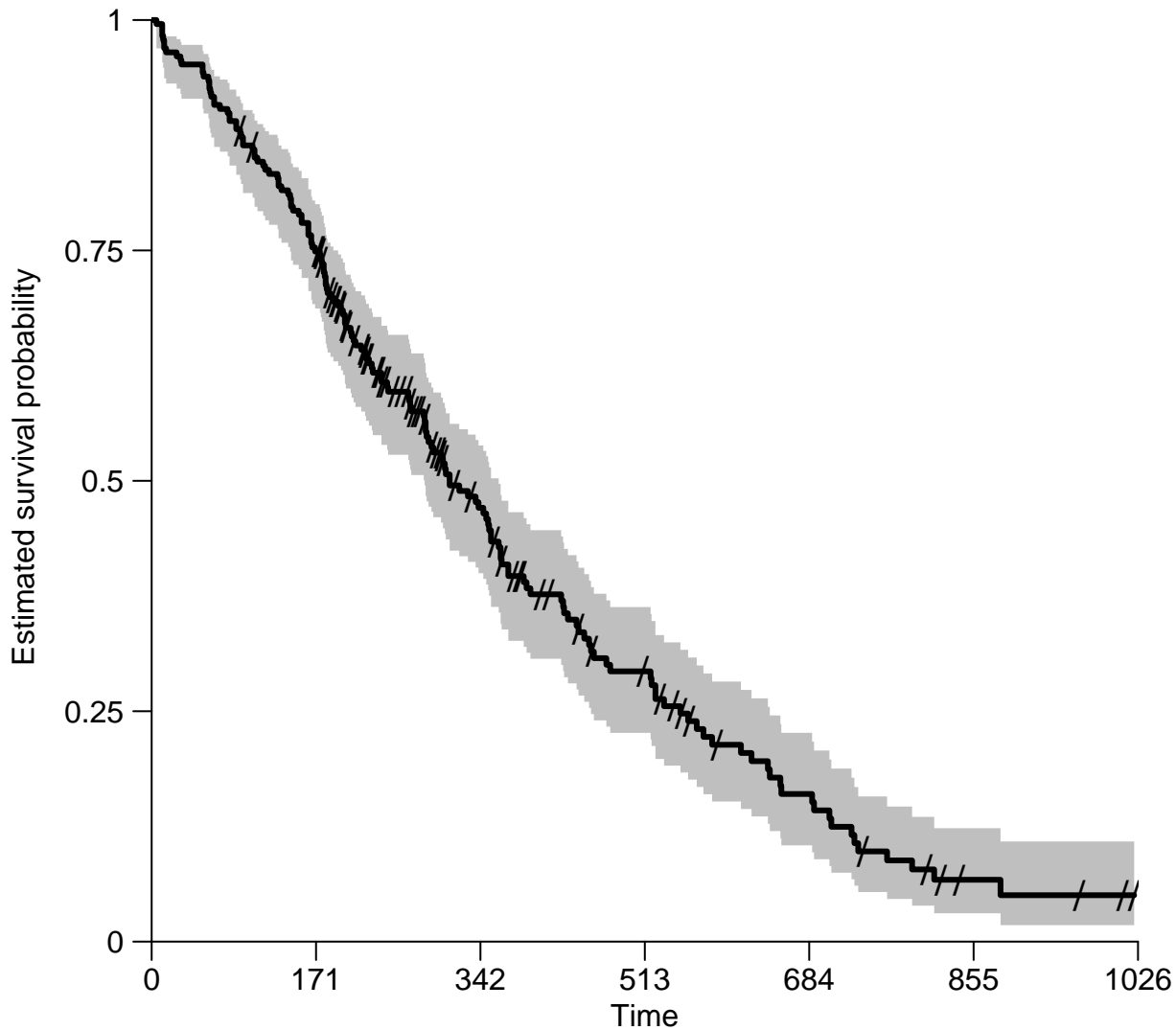


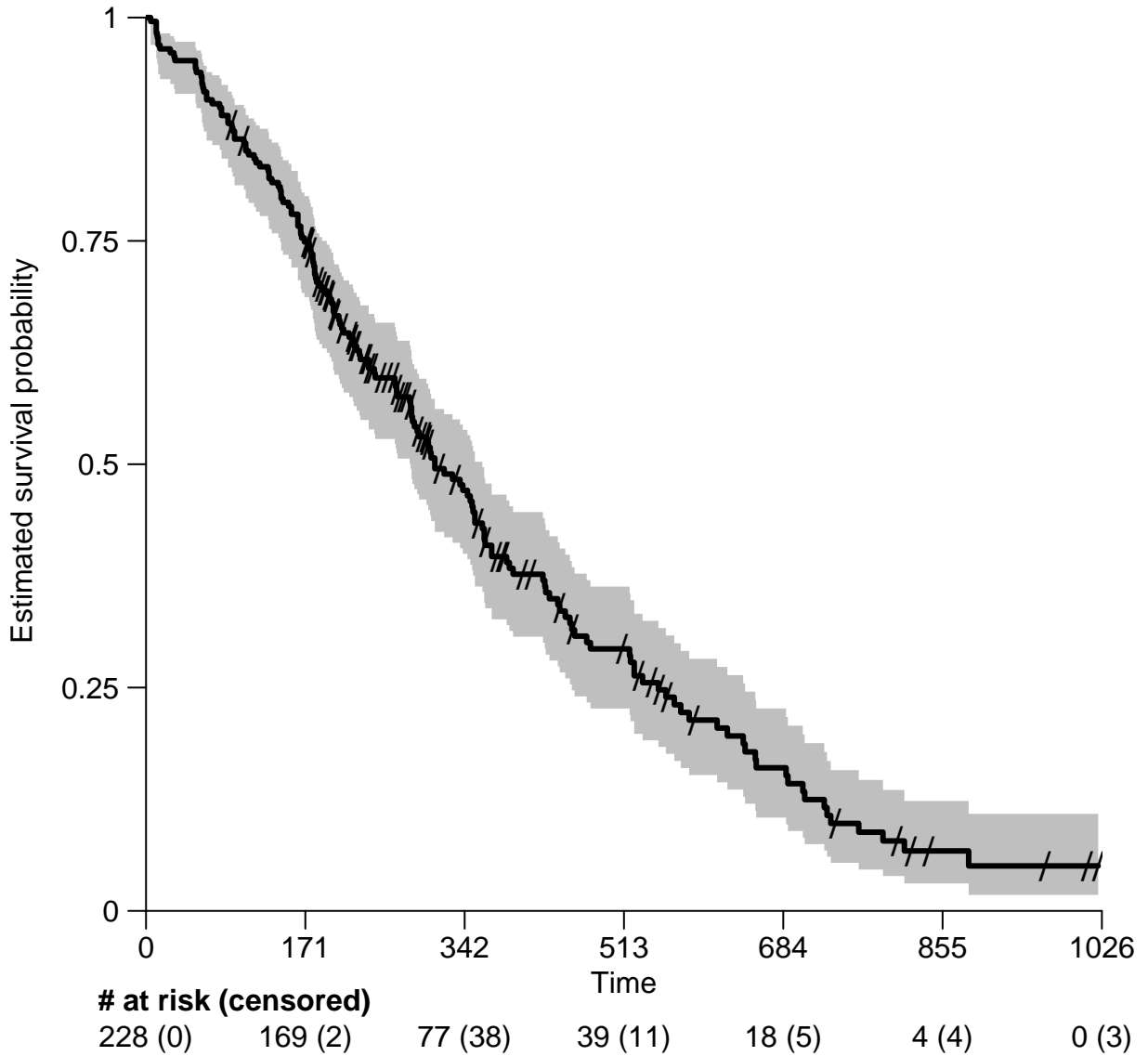


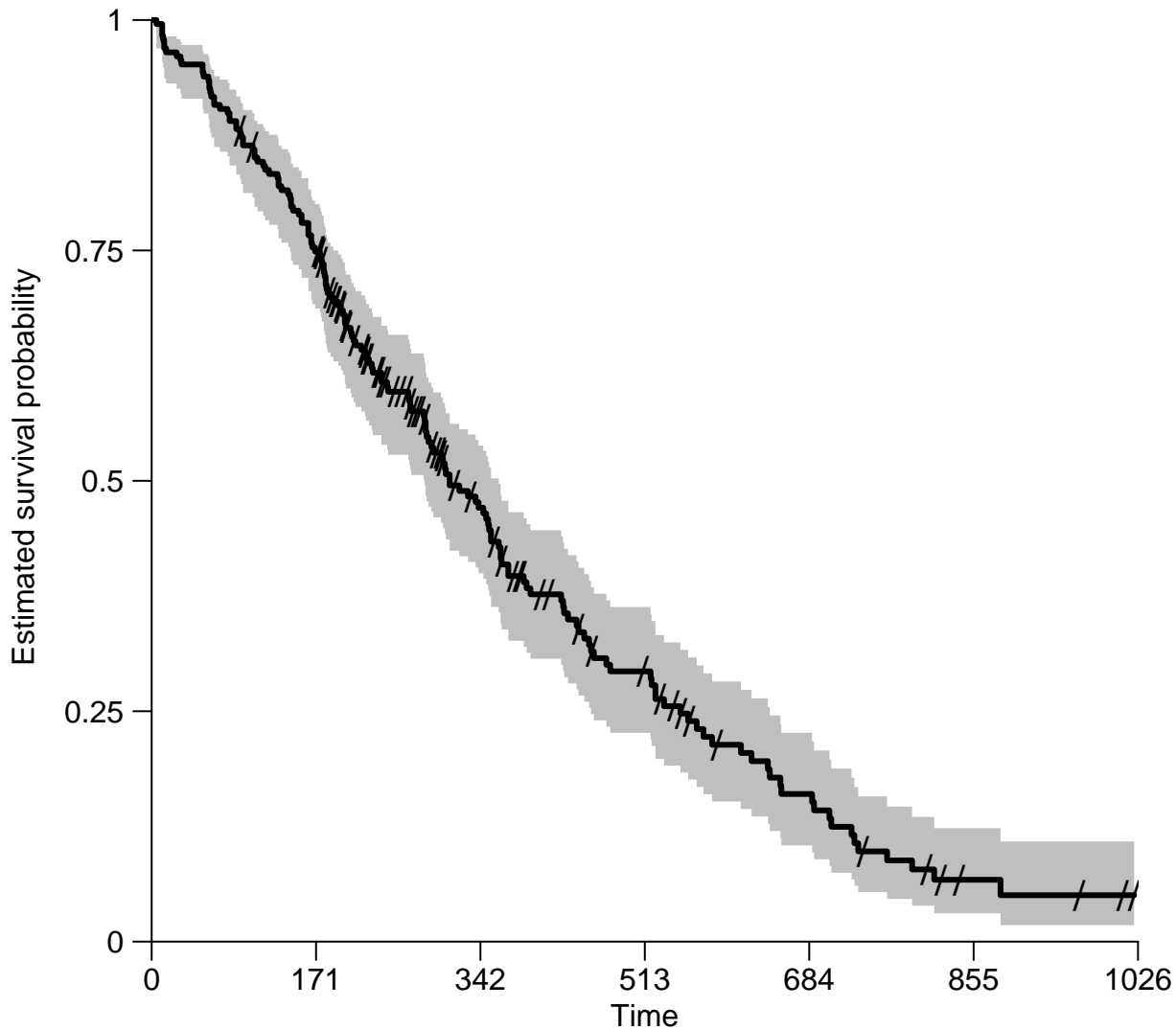


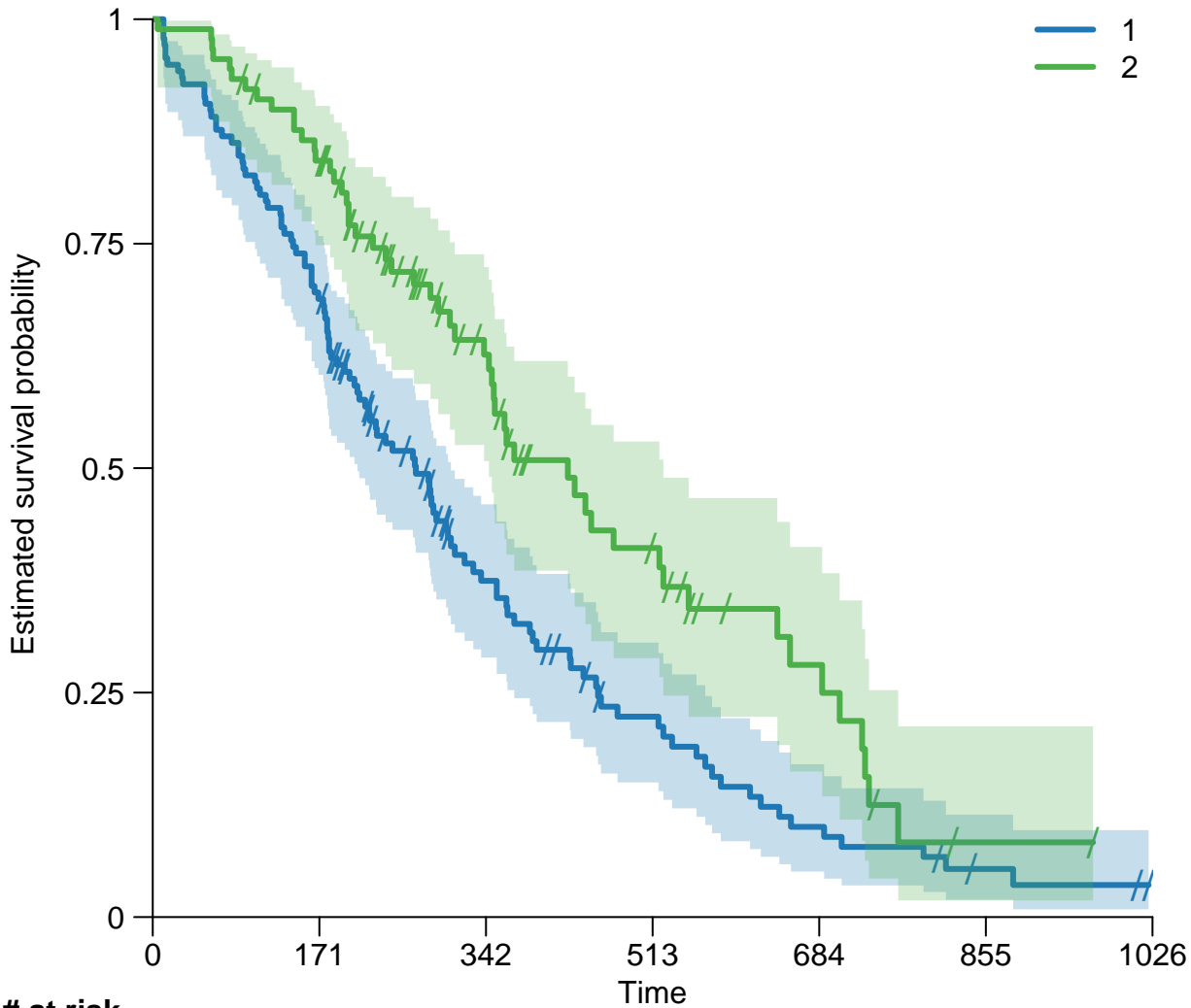
**# at risk**

1	138	95	39	20	9	3	0
2	90	74	38	19	9	1	0



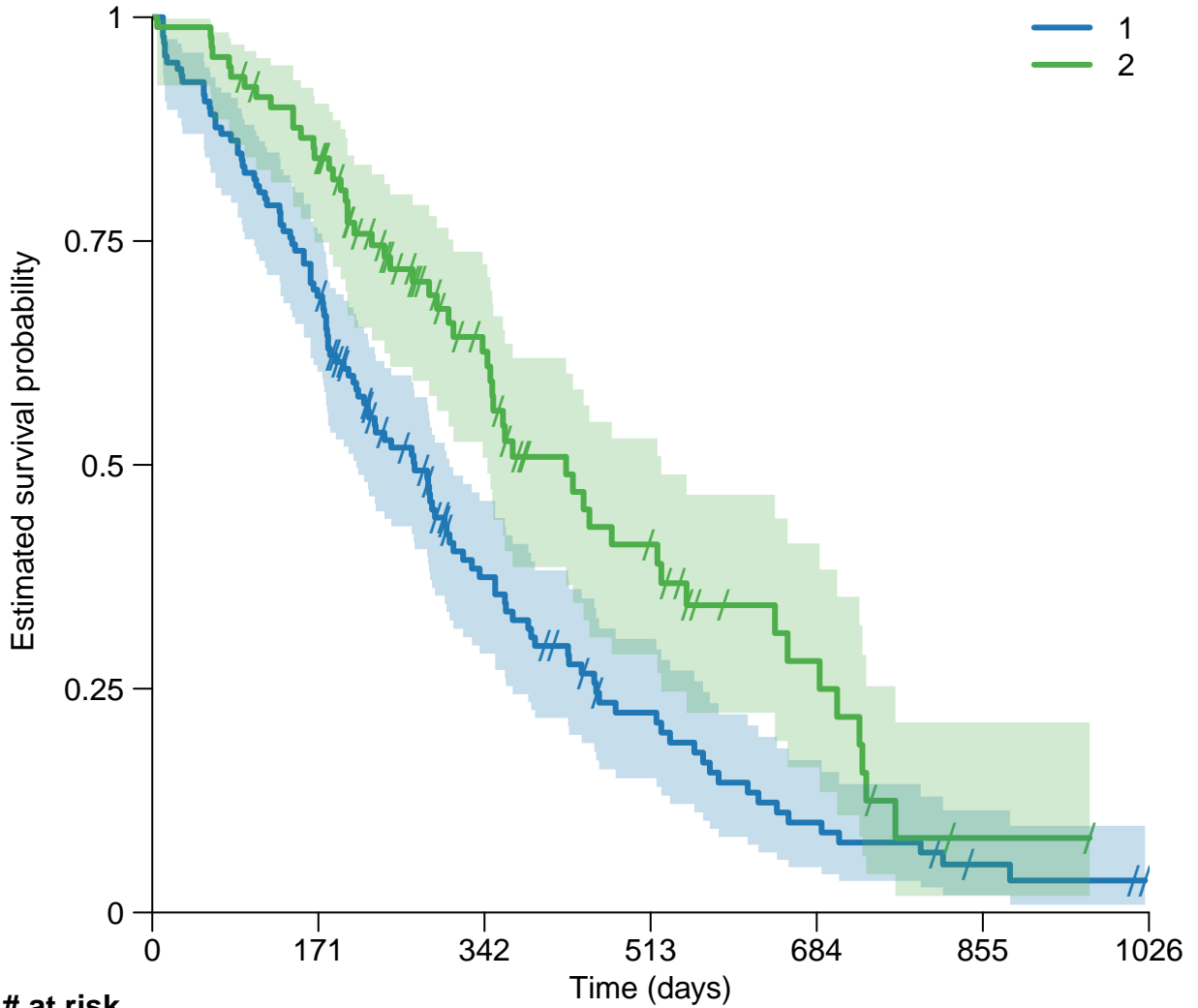






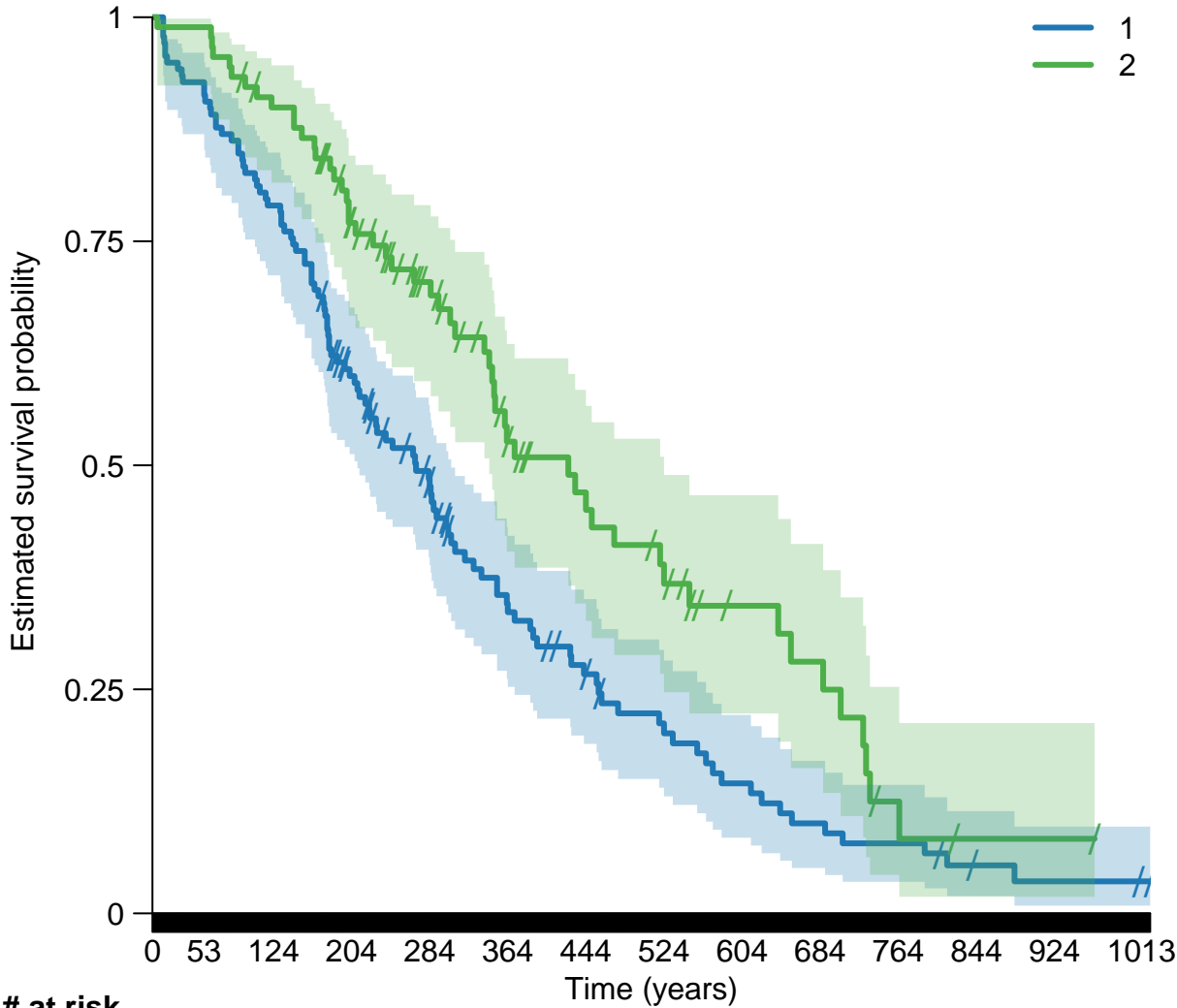
# at risk

1	138	95	39	20	9	3	0
2	90	74	38	19	9	1	0



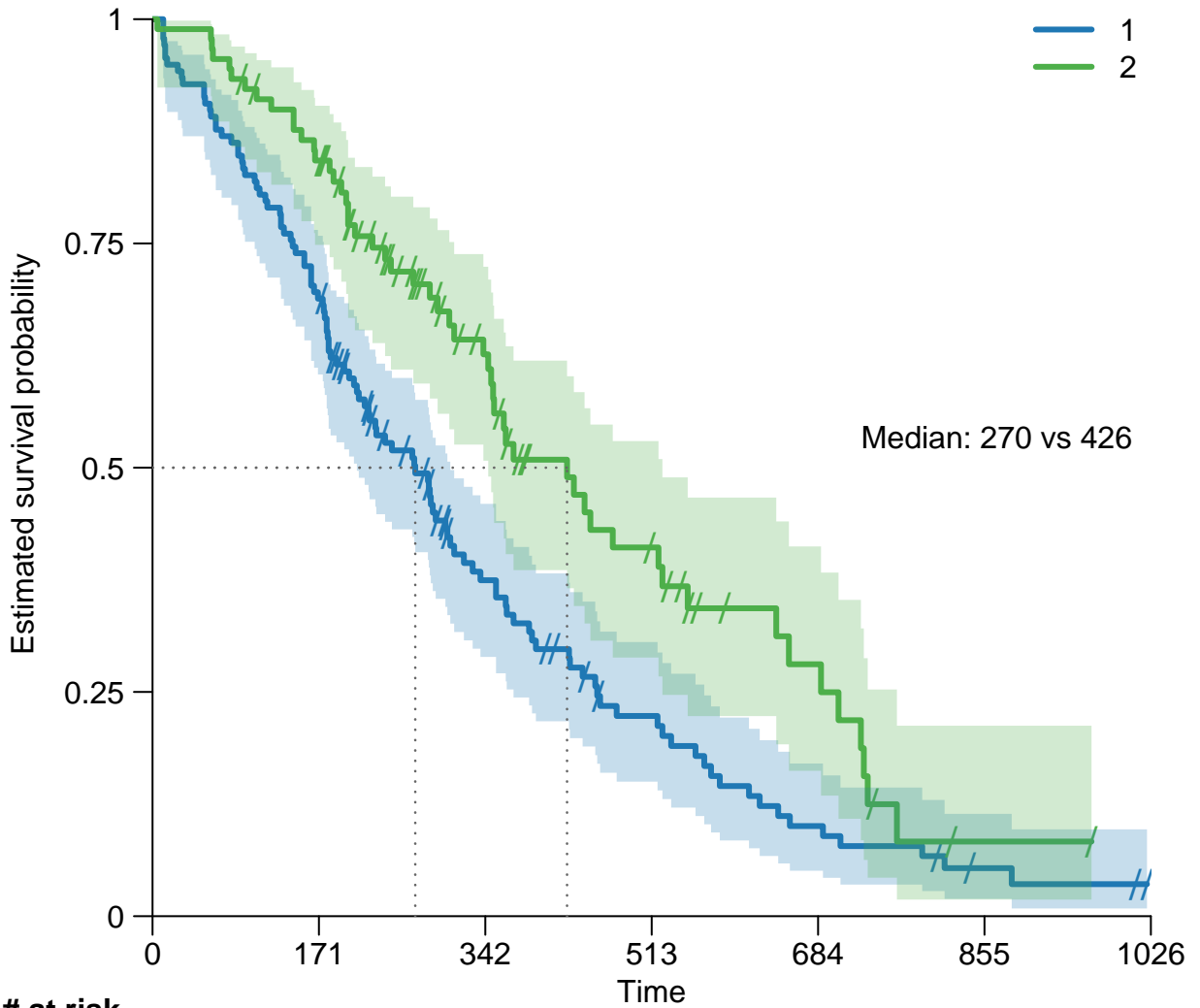
# at risk

1	138	95	39	20	9	3	0
2	90	74	38	19	9	1	0



# at risk

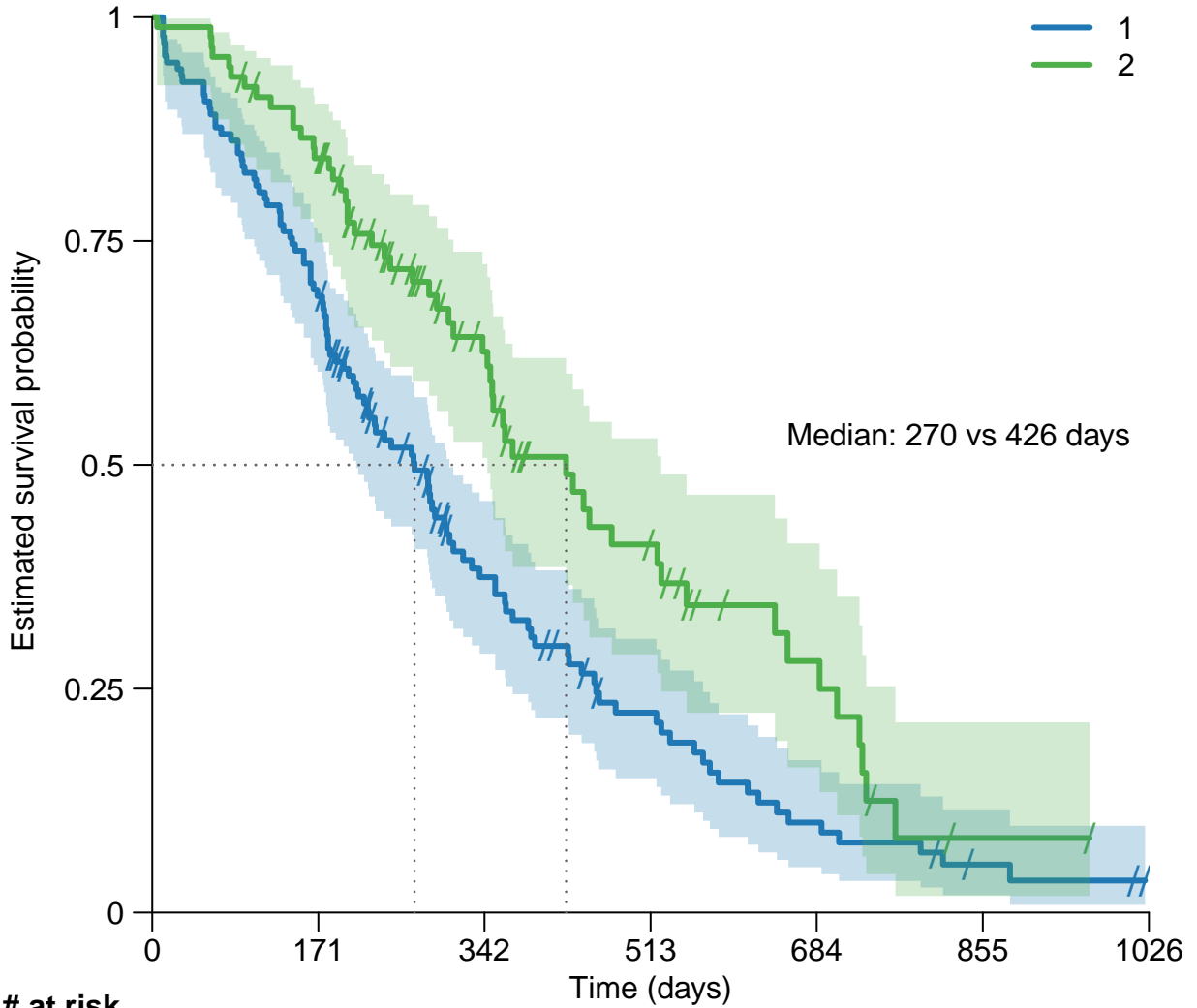




**# at risk**

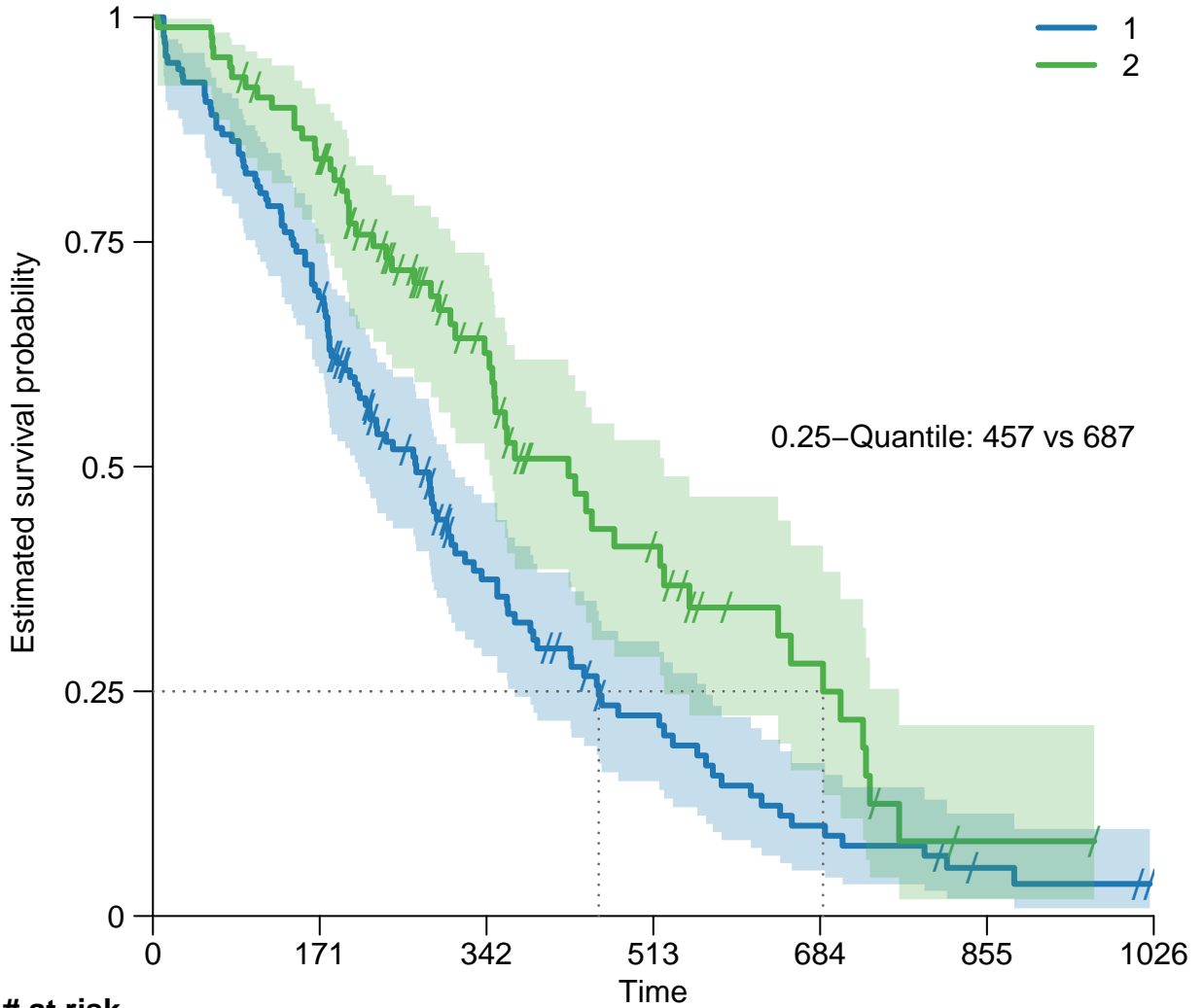
1	138	95	39	20	9	3	0
2	90	74	38	19	9	1	0





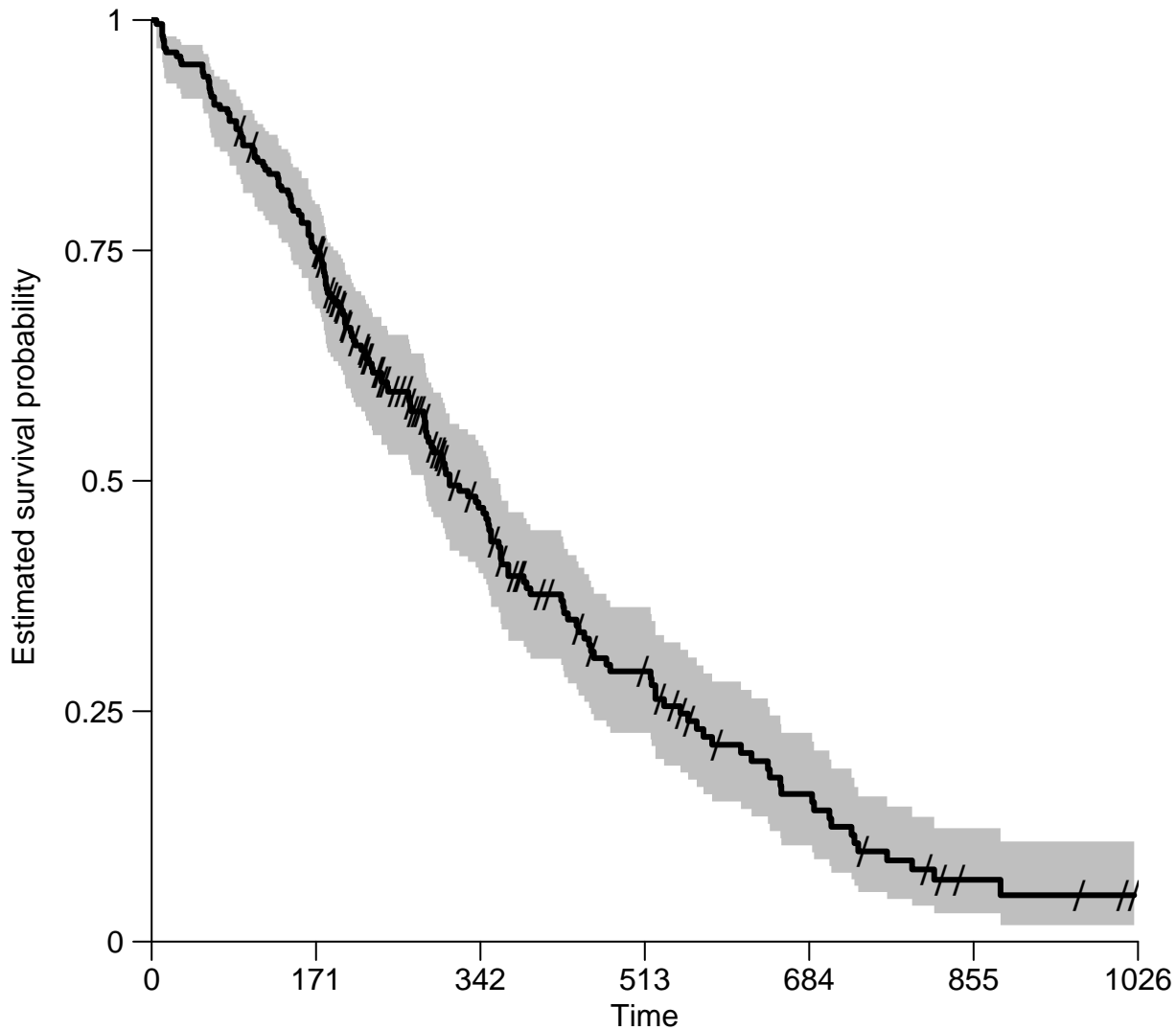
# at risk

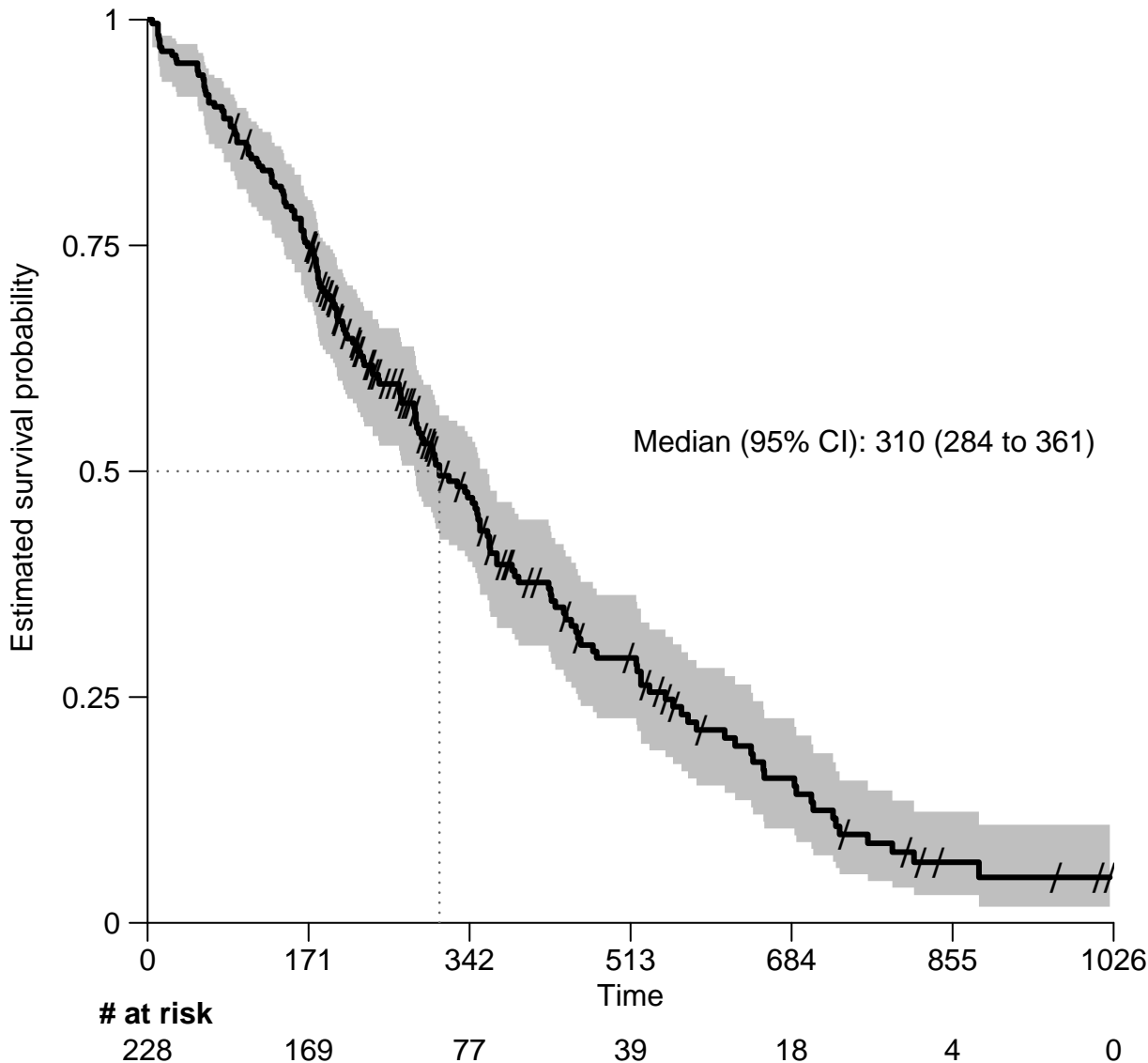
1	138	95	39	20	9	3	0
2	90	74	38	19	9	1	0

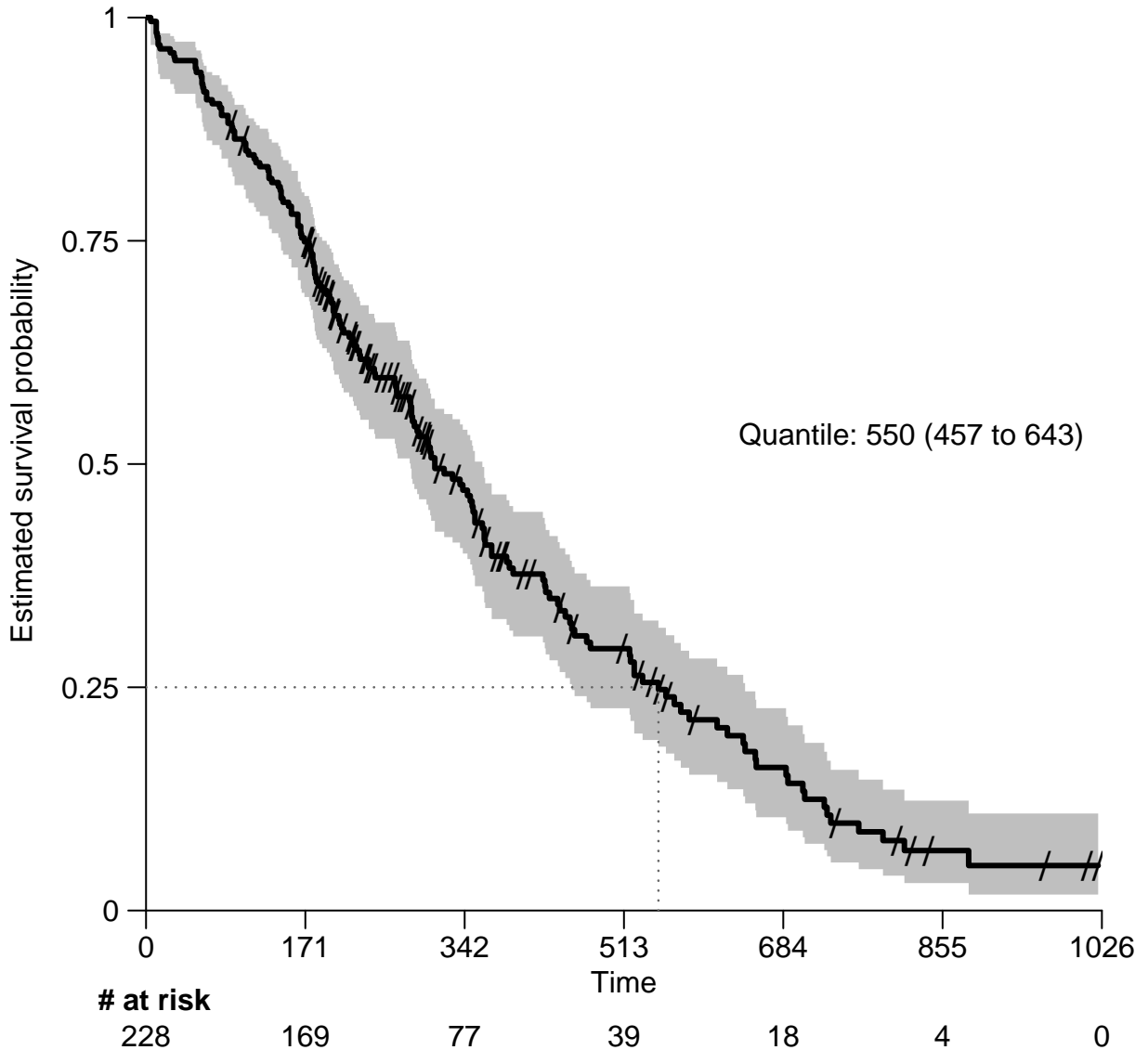


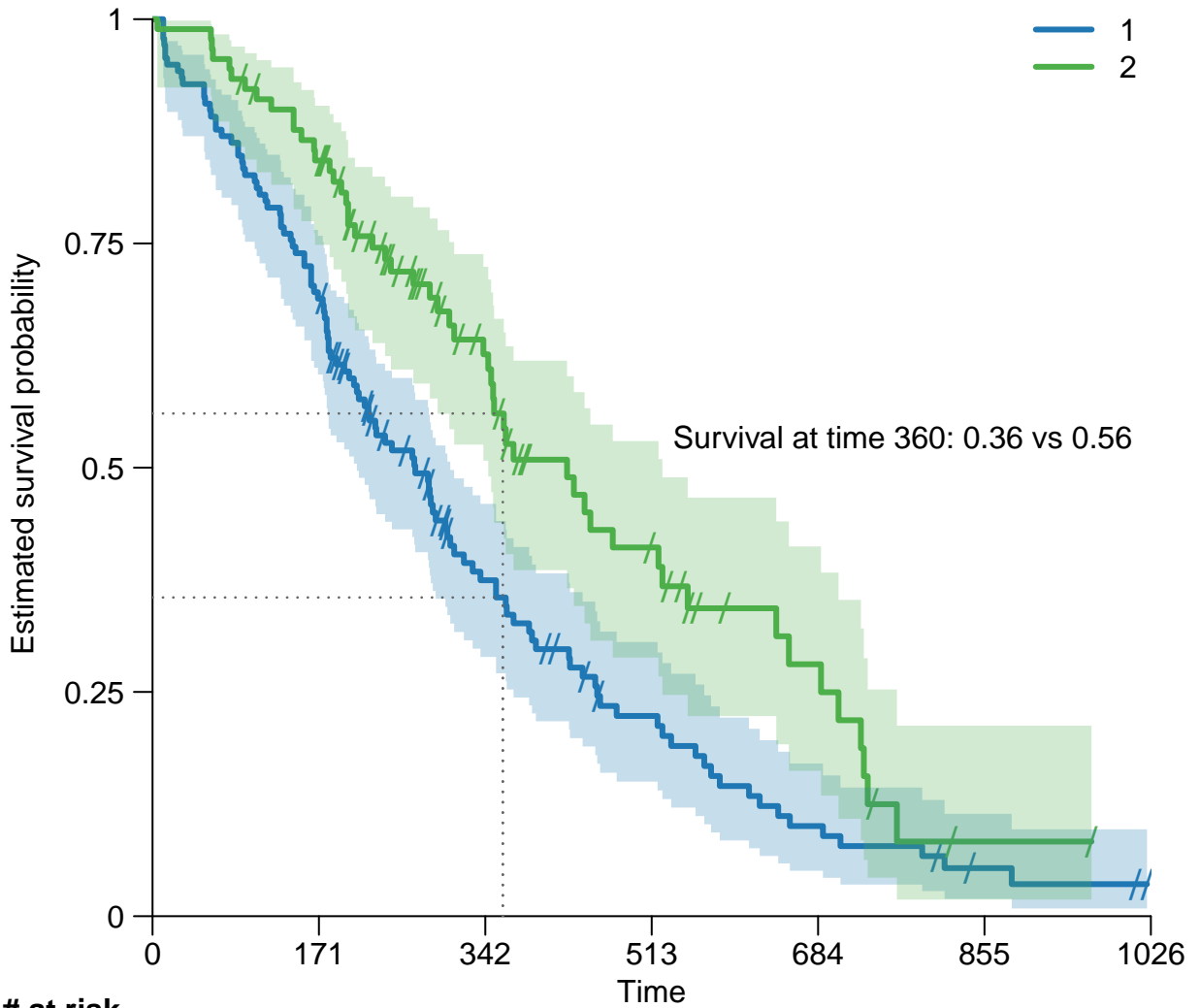
**# at risk**

1	138	95	39	20	9	3	0
2	90	74	38	19	9	1	0



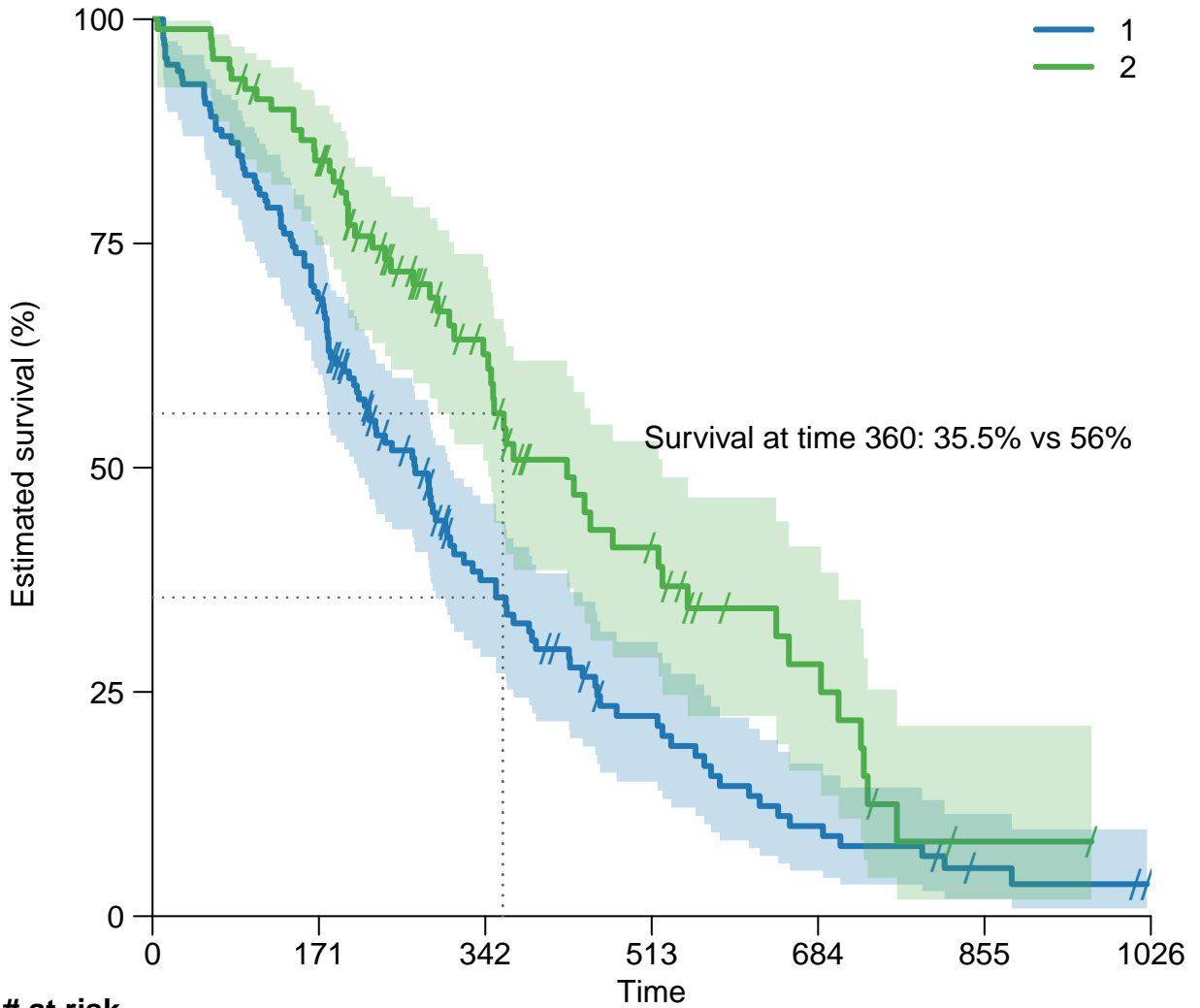






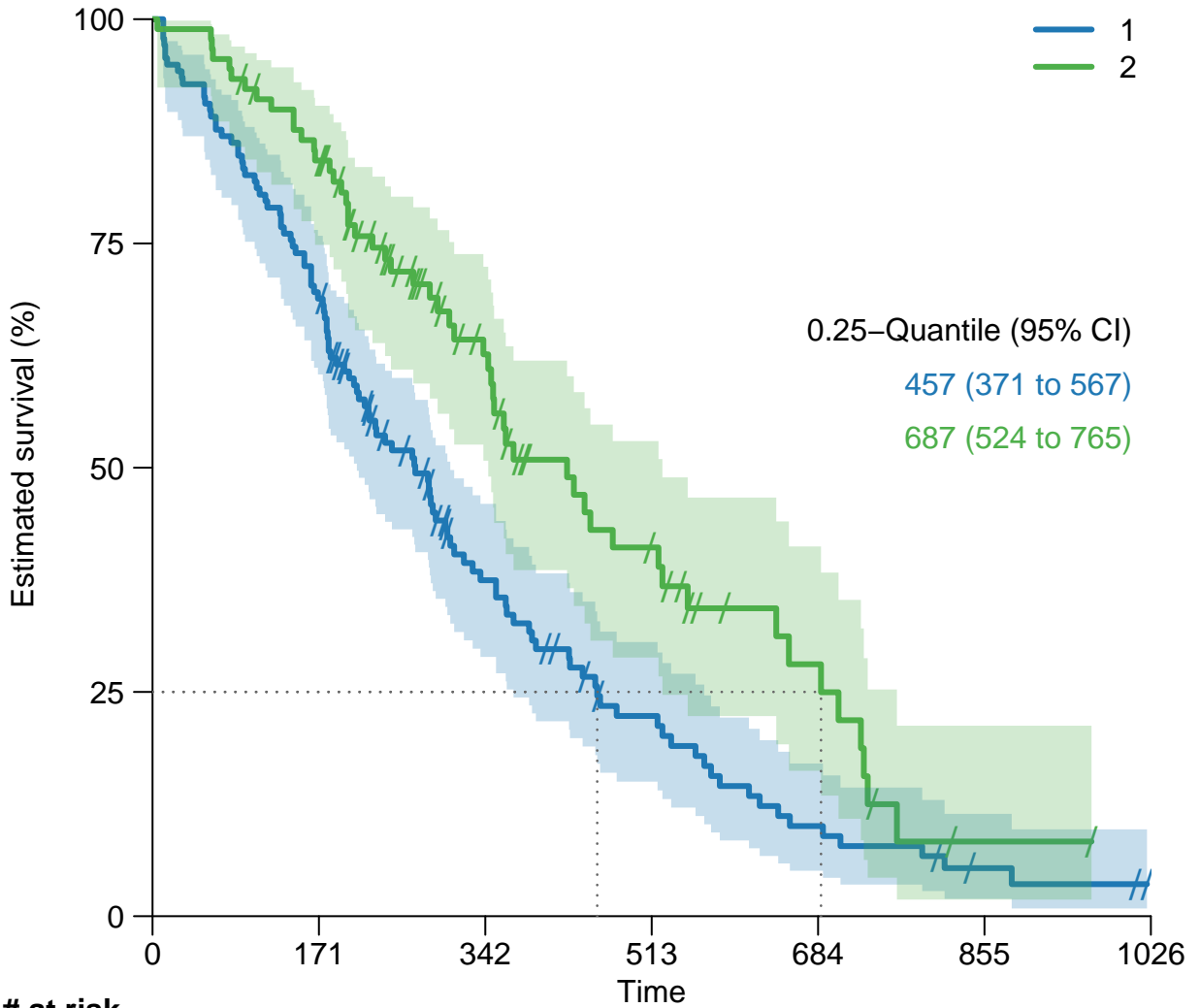
**# at risk**

1	138	95	39	20	9	3	0
2	90	74	38	19	9	1	0



**# at risk**

1	138	95	39	20	9	3	0
2	90	74	38	19	9	1	0



**# at risk**

1	138	95	39	20	9	3	0
2	90	74	38	19	9	1	0



