

Create initial data

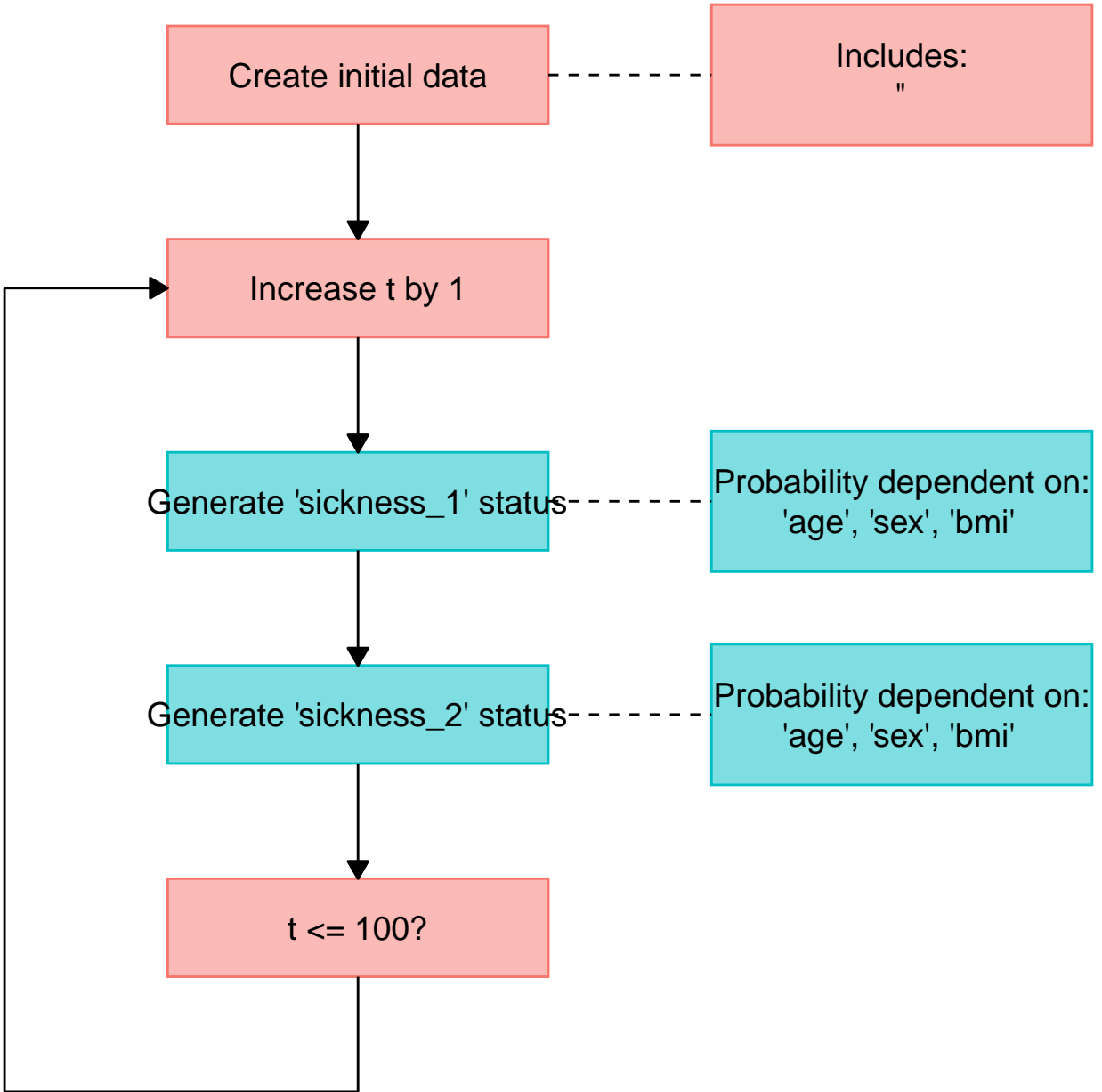
Includes:  
"

Increase t by 1

Generate 'sickness\_1' status

Probability dependent on:  
'age', 'sex', 'bmi'

t <= 100?

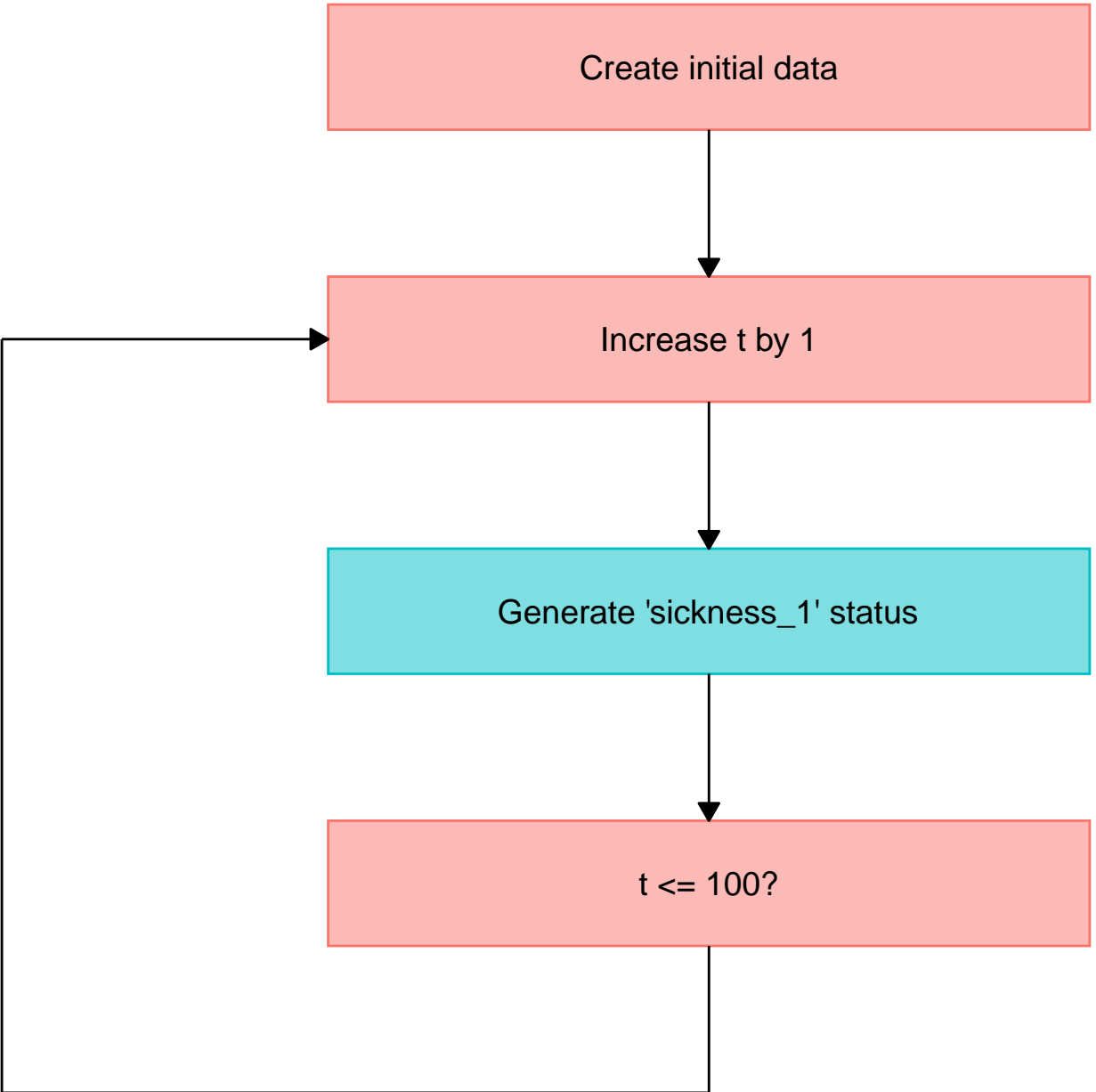


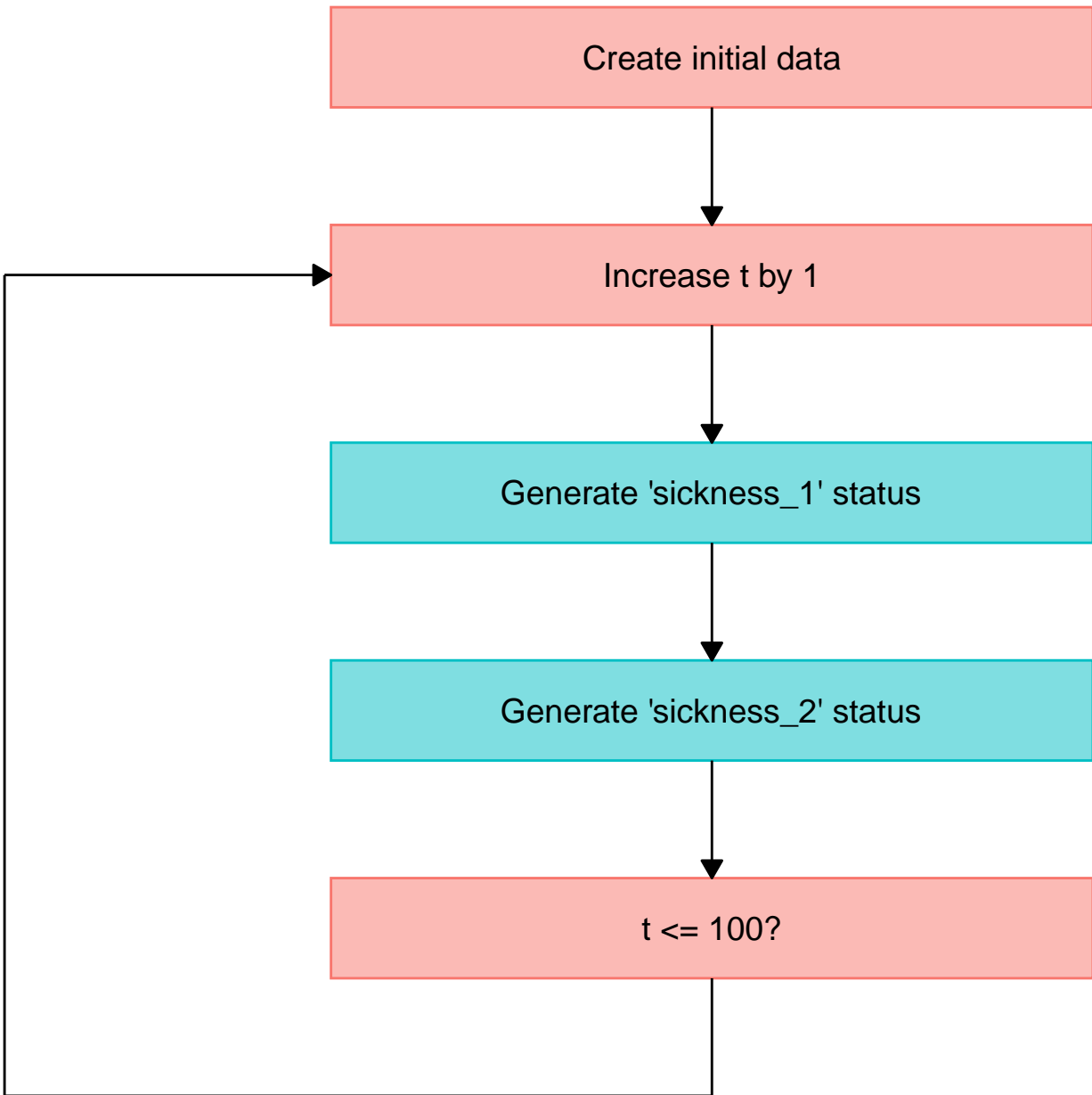
Create initial data

Increase t by 1

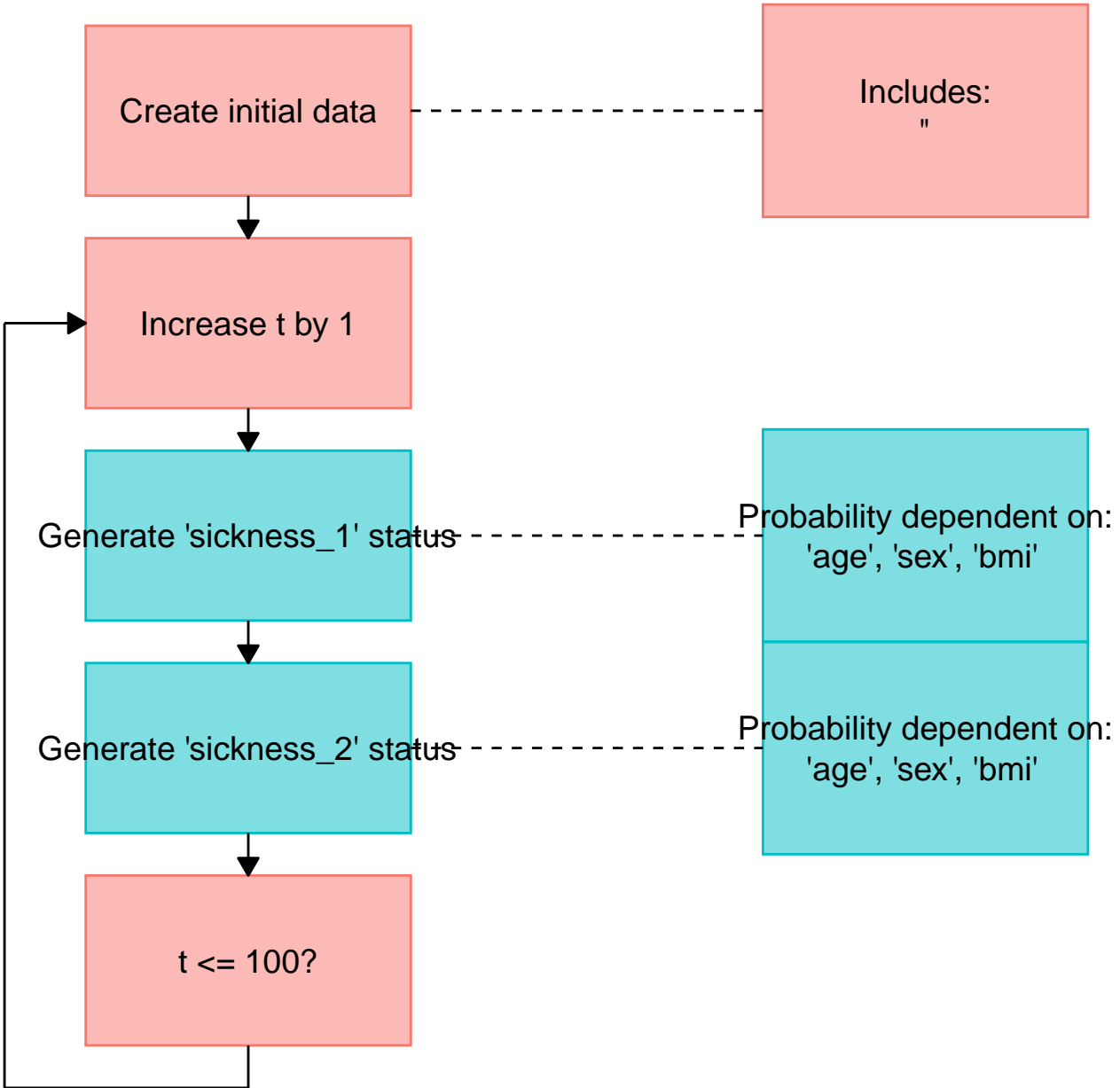
Generate 'sickness\_1' status

t ≤ 100?









Some text

More text on right

ease t by someth

this the first

which number again

this the second

maybe 42

why you would ch