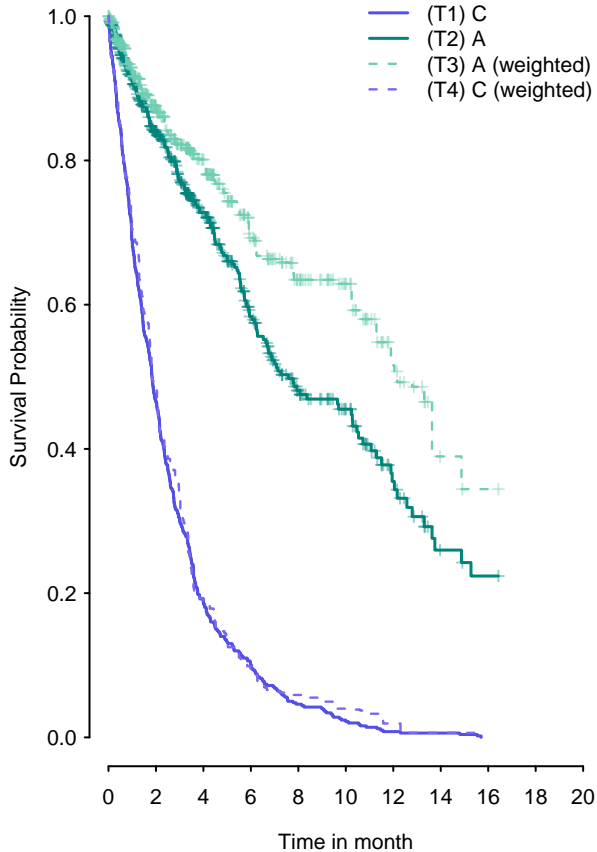


**Kaplan–Meier Curves  
(A vs C) in the IPD trial  
Endpoint:Overall Survival**

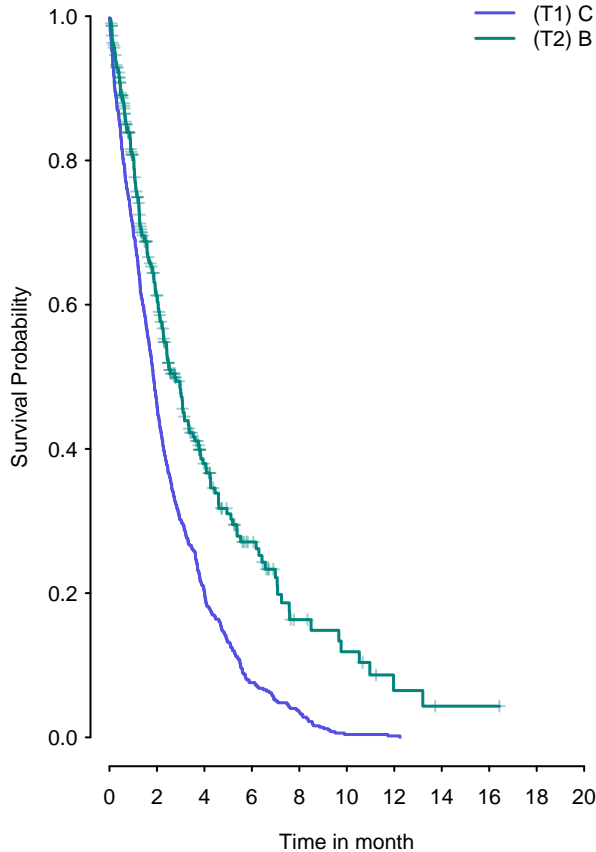


**Number at risk**

|    |       |       |      |      |      |      |      |      |      |     |     |
|----|-------|-------|------|------|------|------|------|------|------|-----|-----|
| T1 | 500   | 233   | 93   | 50   | 23   | 11   | 4    | 3    | n/a  | n/a | n/a |
| T2 | 500   | 319   | 211  | 130  | 84   | 61   | 31   | 15   | 12   | n/a | n/a |
| T3 | 173.4 | 120.3 | 86.5 | 61.2 | 44.2 | 35.1 | 20.7 | 11.5 | 10.1 | n/a | n/a |
| T4 | 173.4 | 84.1  | 33.1 | 15.8 | 10.2 | 6.7  | 3.3  | 1.1  | n/a  | n/a | n/a |

Note: Number at risk for adjusted/weighted treatment arm is the

**Kaplan–Meier Curves  
(B vs C) in the AgD trial  
Endpoint:Overall Survival**

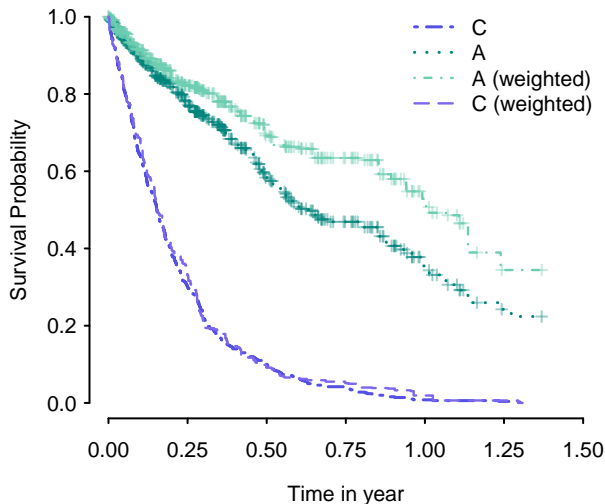


**Number at risk**

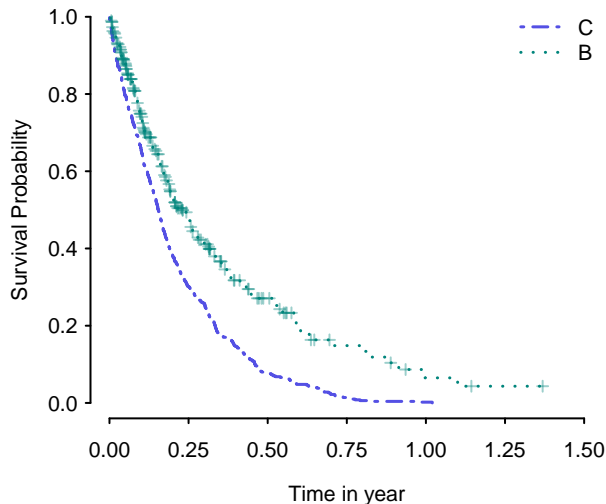
|    |     |     |     |    |    |   |   |     |     |     |     |
|----|-----|-----|-----|----|----|---|---|-----|-----|-----|-----|
| T1 | 500 | 230 | 101 | 38 | 18 | 2 | 1 | n/a | n/a | n/a | n/a |
| T2 | 300 | 136 | 58  | 30 | 12 | 8 | 3 | 1   | 1   | n/a | n/a |

Note: Number at risk for adjusted/weighted treatment arm is the

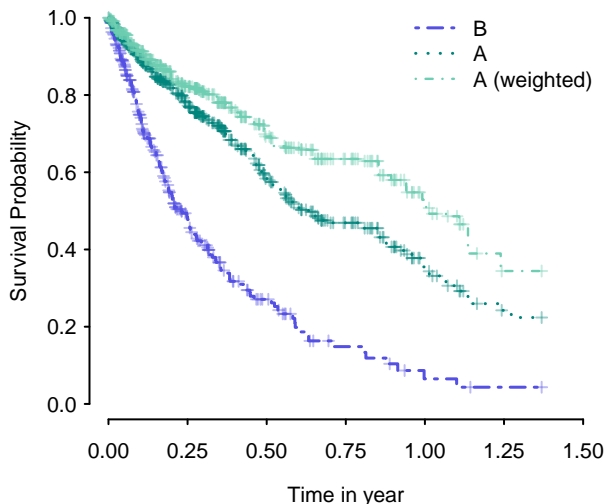
**Kaplan–Meier Curves  
(A vs C) in the IPD trial  
Endpoint:Overall Survival**



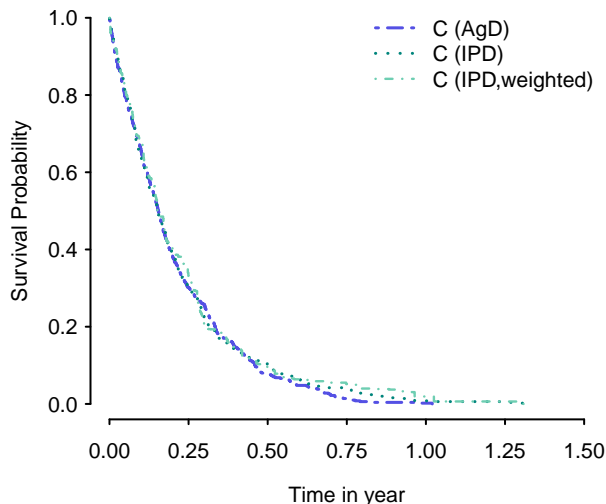
**Kaplan–Meier Curves  
(B vs C) in the AgD trial  
Endpoint:Overall Survival**



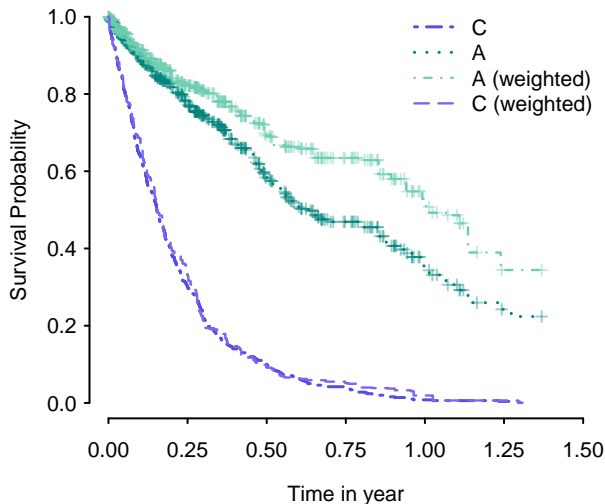
**Kaplan–Meier Curves  
(A vs B)  
Endpoint:Overall Survival**



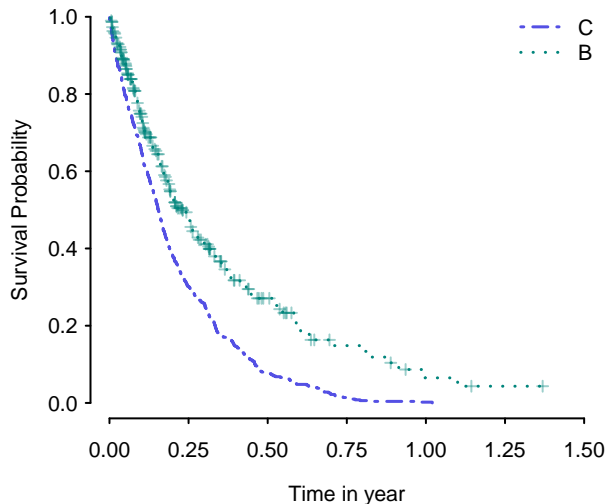
**Kaplan–Meier Curves of Common Comparator  
C(IPD vs AgD Trial)  
Endpoint:Overall Survival**



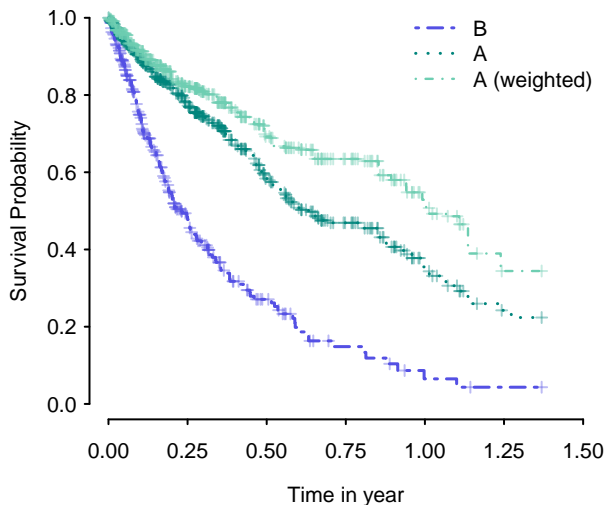
**Kaplan–Meier Curves  
(A vs C) in the IPD trial  
Endpoint:Overall Survival**



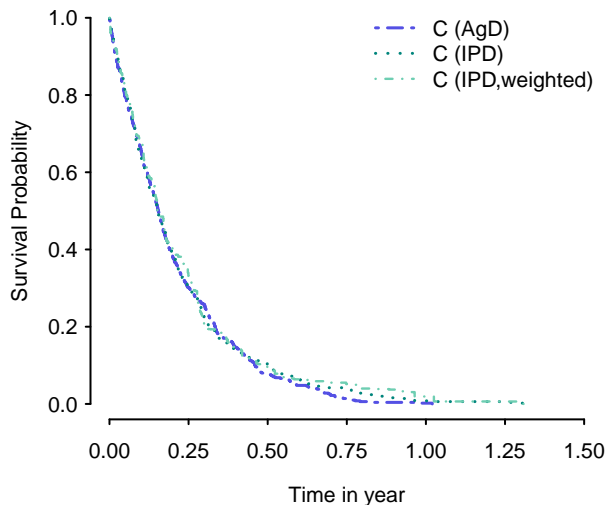
**Kaplan–Meier Curves  
(B vs C) in the AgD trial  
Endpoint:Overall Survival**



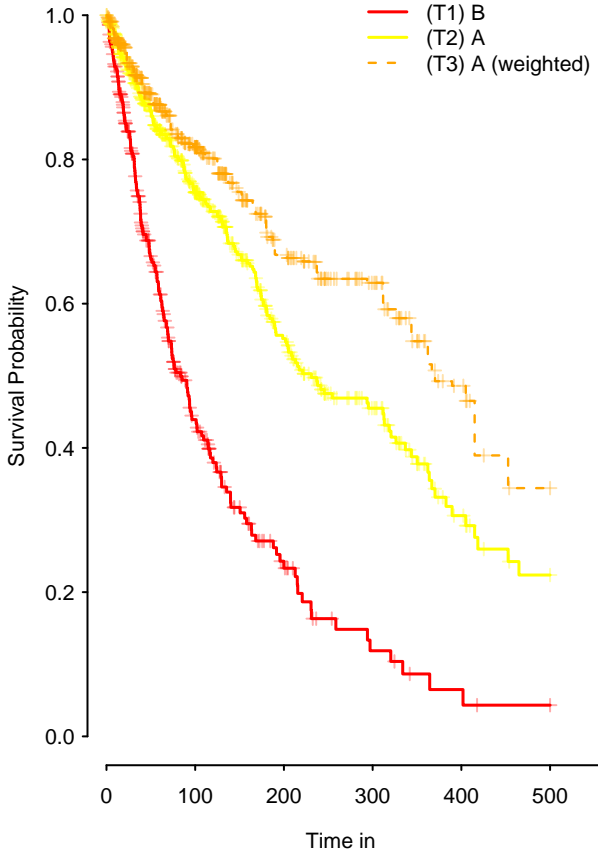
**Kaplan–Meier Curves  
(A vs B)  
Endpoint:Overall Survival**



**Kaplan–Meier Curves of Common Comparator  
C(IPD vs AgD Trial)  
Endpoint:Overall Survival**



**Kaplan–Meier Curves  
(A vs B)  
Endpoint:PFS**

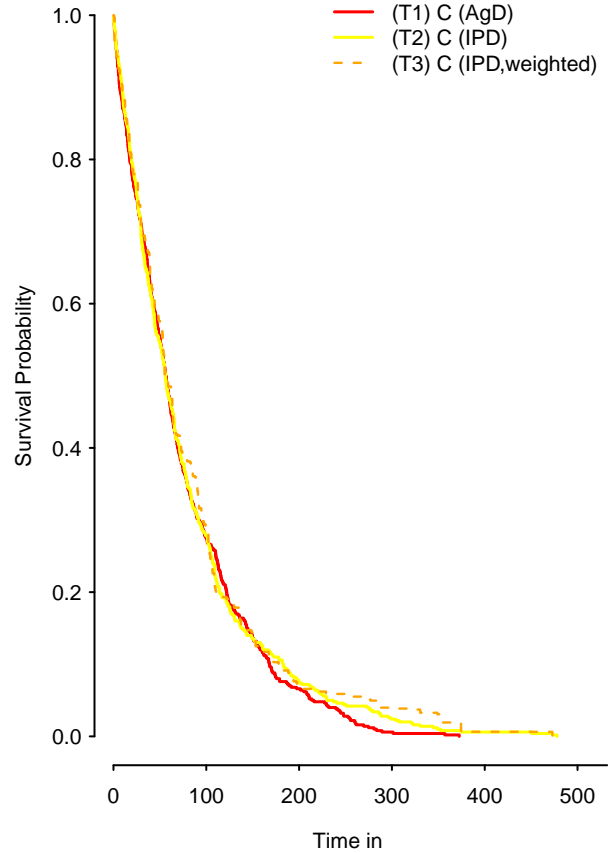


**Number at risk**

|    |       |       |      |      |      |     |
|----|-------|-------|------|------|------|-----|
| T1 | 300   | 79    | 24   | 8    | 3    | n/a |
| T2 | 500   | 246   | 119  | 63   | 23   | n/a |
| T3 | 173.4 | 100.1 | 58.3 | 36.3 | 14.4 | n/a |

Note: Number at risk for adjusted/weighted treatment arm is the

**Kaplan–Meier Curves of Common Comparator  
C(IPD vs AgD Trial)  
Endpoint:PFS**

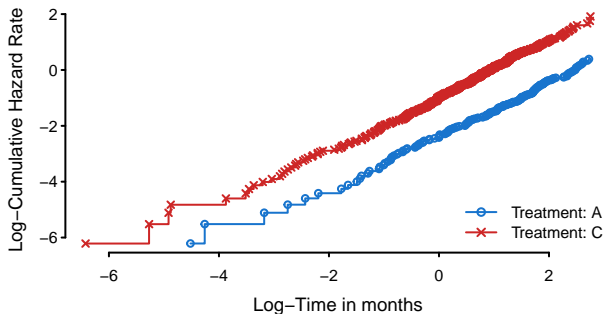


**Number at risk**

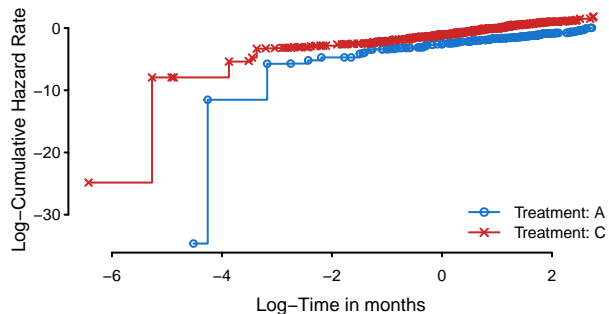
|    |       |      |    |     |     |     |
|----|-------|------|----|-----|-----|-----|
| T1 | 500   | 138  | 33 | 3   | n/a | n/a |
| T2 | 500   | 139  | 37 | 12  | 3   | n/a |
| T3 | 173.4 | 50.7 | 12 | 6.9 | 1.1 | n/a |

Note: Number at risk for adjusted/weighted treatment arm is the

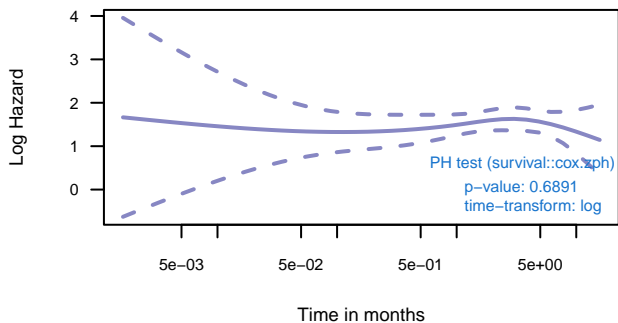
**Log Cumulative Hazard versus Log Time**  
Endpoint: Time to Event Endpoint  
(Before Matching)



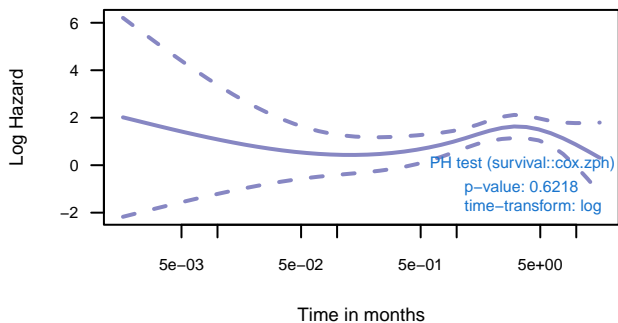
**Log Cumulative Hazard versus Log Time**  
Endpoint: Time to Event Endpoint  
(After Matching)



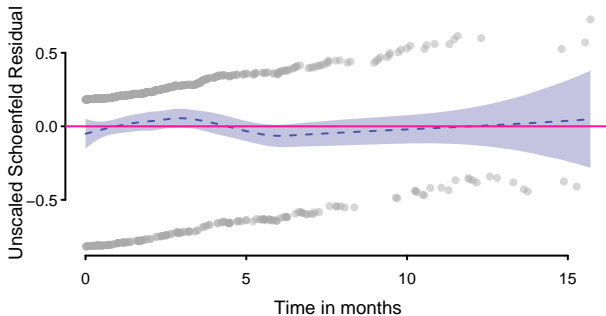
**Time-dependent Hazard function (scaled Schoenfeld residual)**  
Endpoint: Time to Event Endpoint  
(Before Matching)



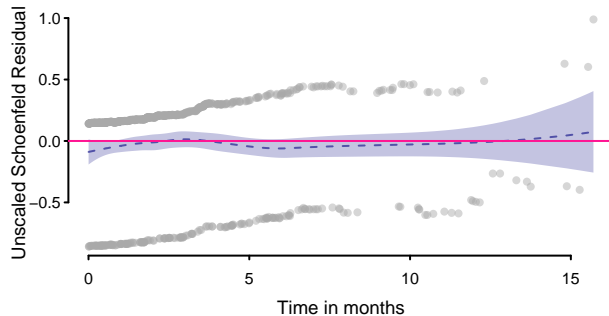
**Time-dependent Hazard function (scaled Schoenfeld residual)**  
Endpoint: Time to Event Endpoint  
(After Matching)



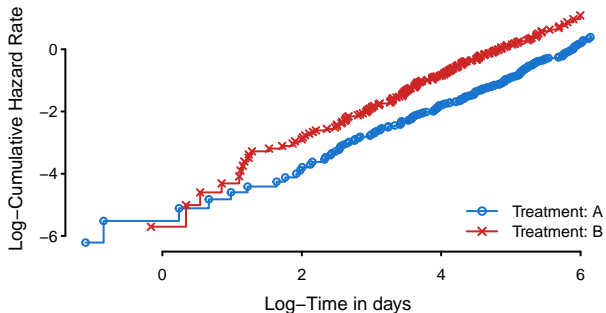
**Unscaled Schoenfeld Residual**  
Endpoint: Time to Event Endpoint  
(Before Matching)



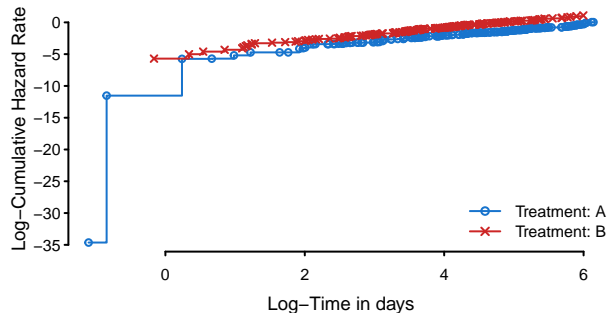
**Unscaled Schoenfeld Residual**  
Endpoint: Time to Event Endpoint  
(After Matching)



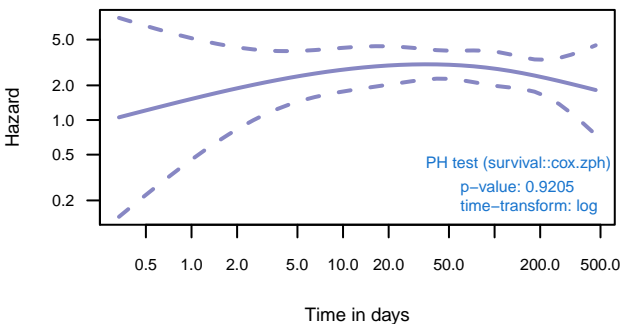
**Log Cumulative Hazard versus Log Time**  
Endpoint: Time to Event Endpoint  
(Before Matching)



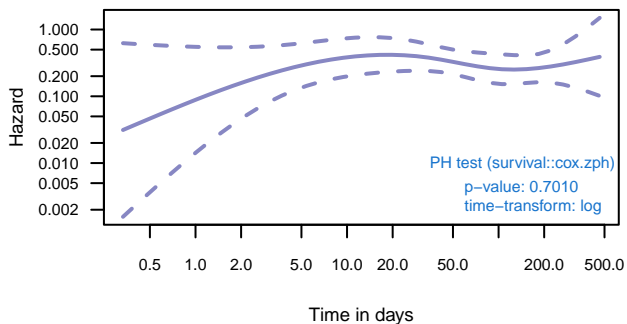
**Log Cumulative Hazard versus Log Time**  
Endpoint: Time to Event Endpoint  
(After Matching)



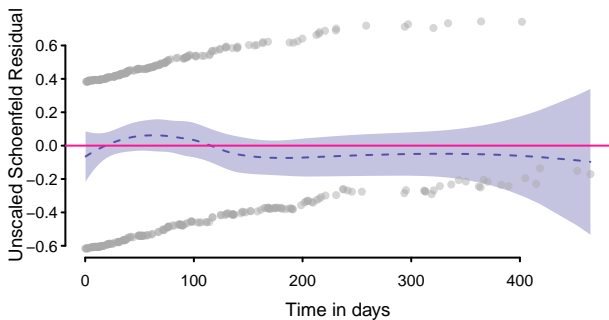
**Time-dependent Hazard function (scaled Schoenfeld residual)**  
Endpoint: Time to Event Endpoint  
(Before Matching)



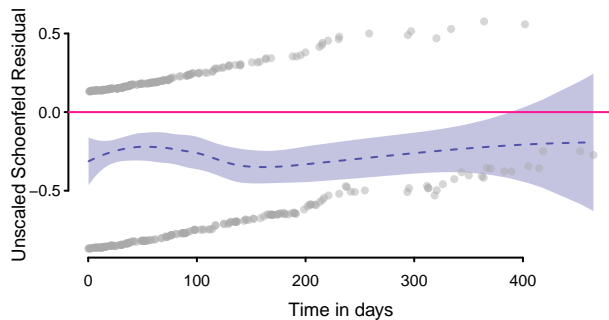
**Time-dependent Hazard function (scaled Schoenfeld residual)**  
Endpoint: Time to Event Endpoint  
(After Matching)



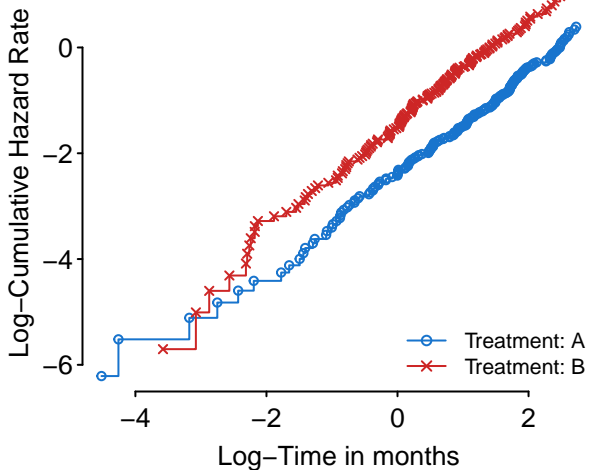
**Unscaled Schoenfeld Residual**  
Endpoint: Time to Event Endpoint  
(Before Matching)



**Unscaled Schoenfeld Residual**  
Endpoint: Time to Event Endpoint  
(After Matching)



**Log Cumulative Hazard versus Log Time**  
**Endpoint: OS**  
**(Before Matching)**



**Unscaled Schoenfeld Residual**  
**Endpoint: OS**  
**(Before Matching)**

