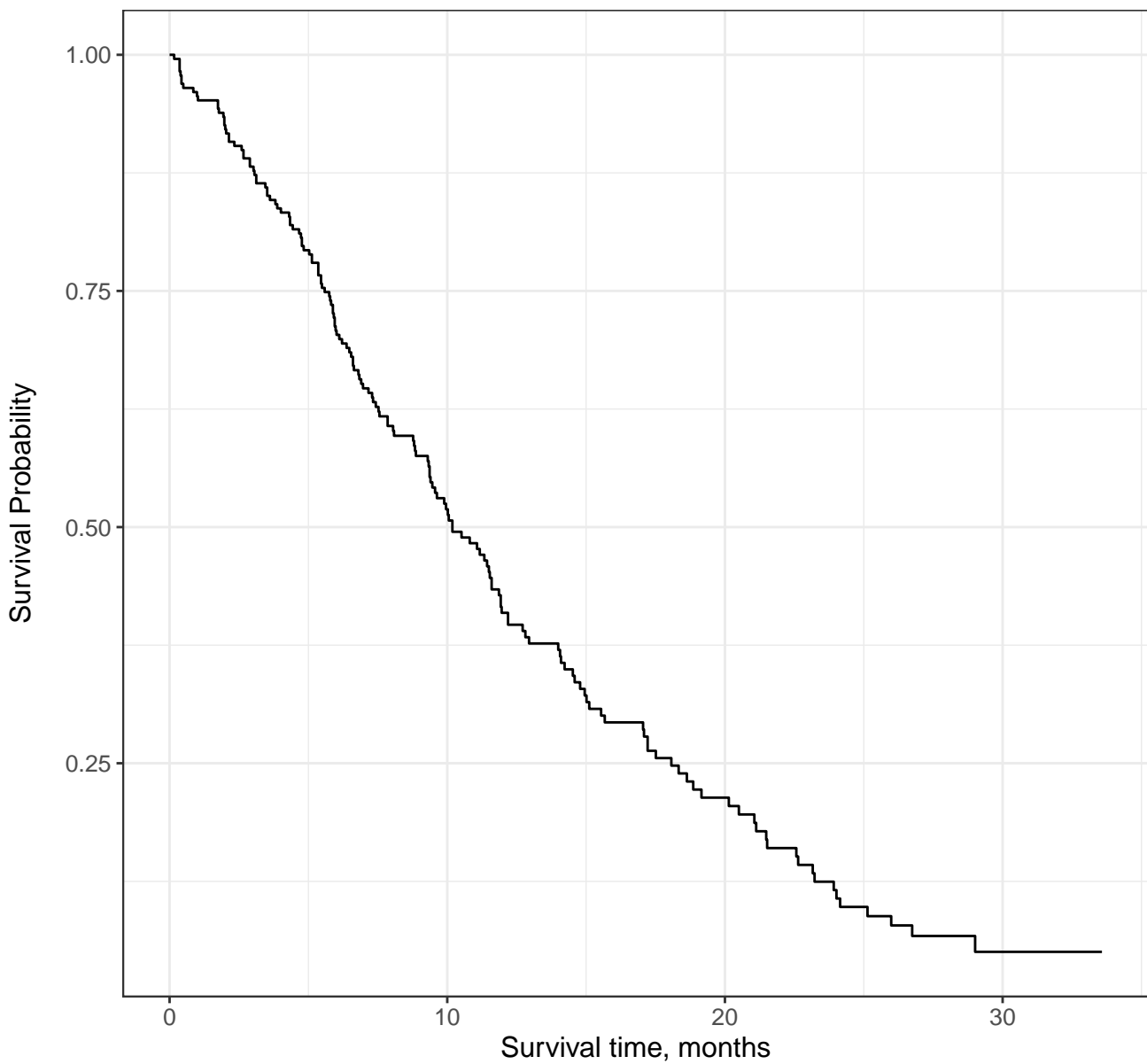


asymptomatic
 asymptomatic and ambulatory

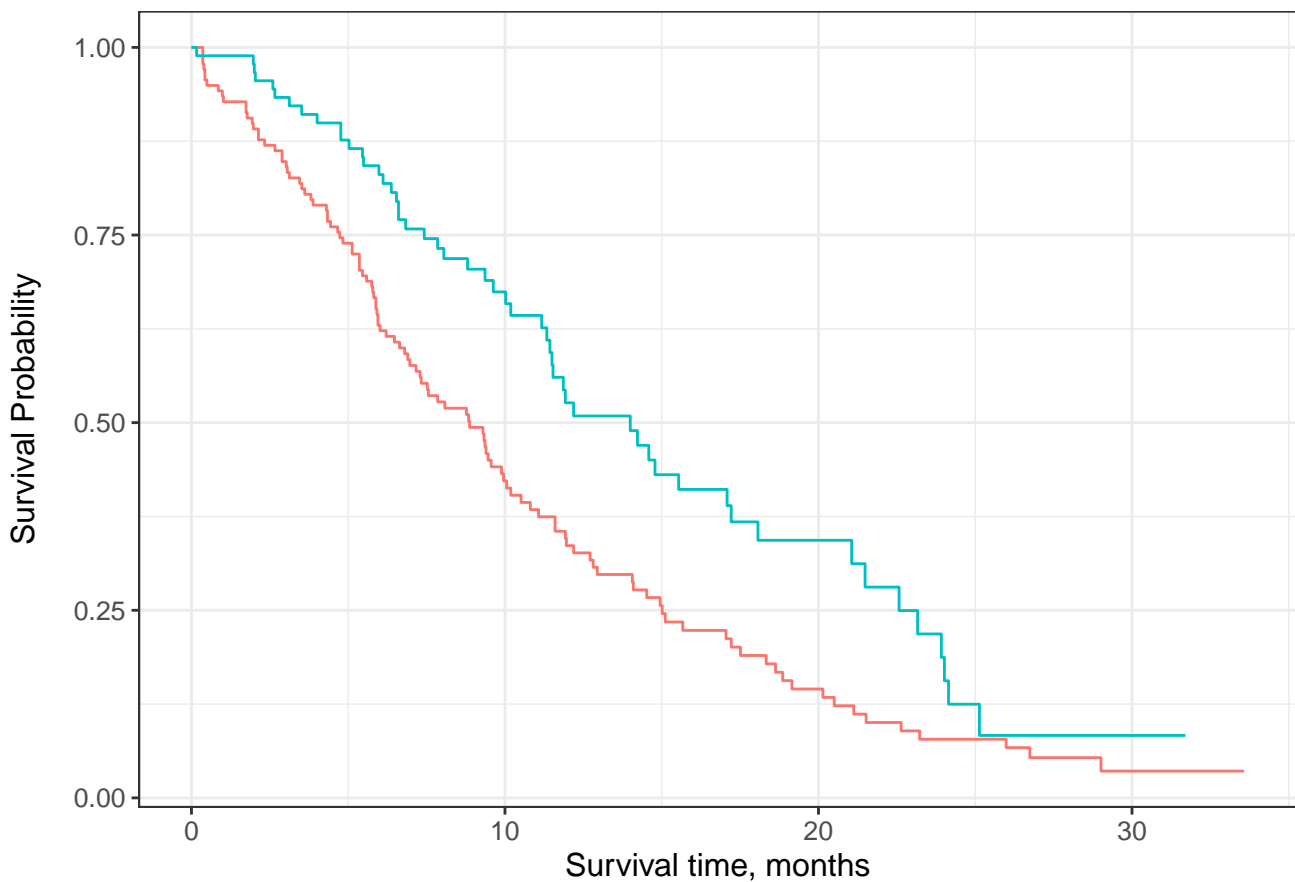
Male, In bed <50% of the day
 Male, In bed > 50% of the day

Female, Asymptomatic
 Female, Symptomatic and ambulatory

Female, Asymptomatic and ambulatory
 Female, Symptomatic



At Risk	228	87	24	3
Events	0	103	148	165



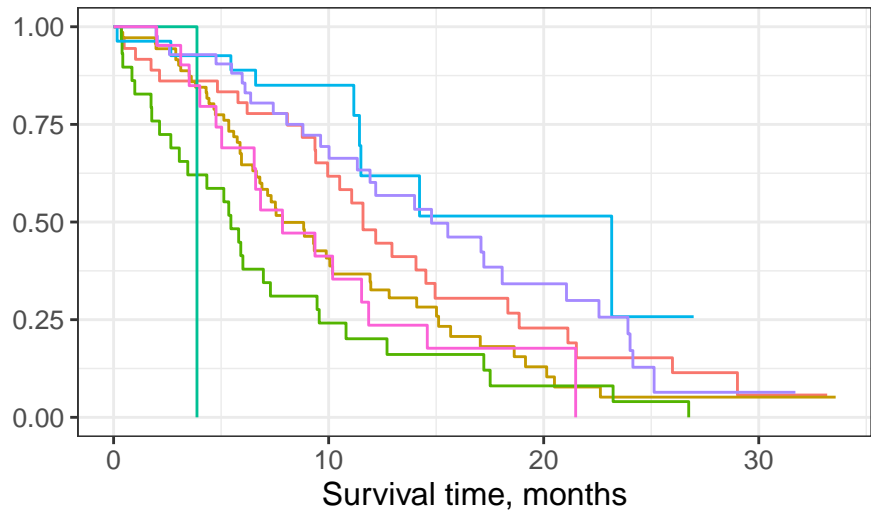
Male

At Risk	138	44	13	2
Events	0	76	103	112

Female

At Risk	90	43	11	1
Events	0	27	45	53

Survival Probability



Male, Asymptomatic

Male, In bed <50% of the day

Female, Asymptomatic

Male, Symptomatic and ambulatory

Male, In bed > 50% of the day

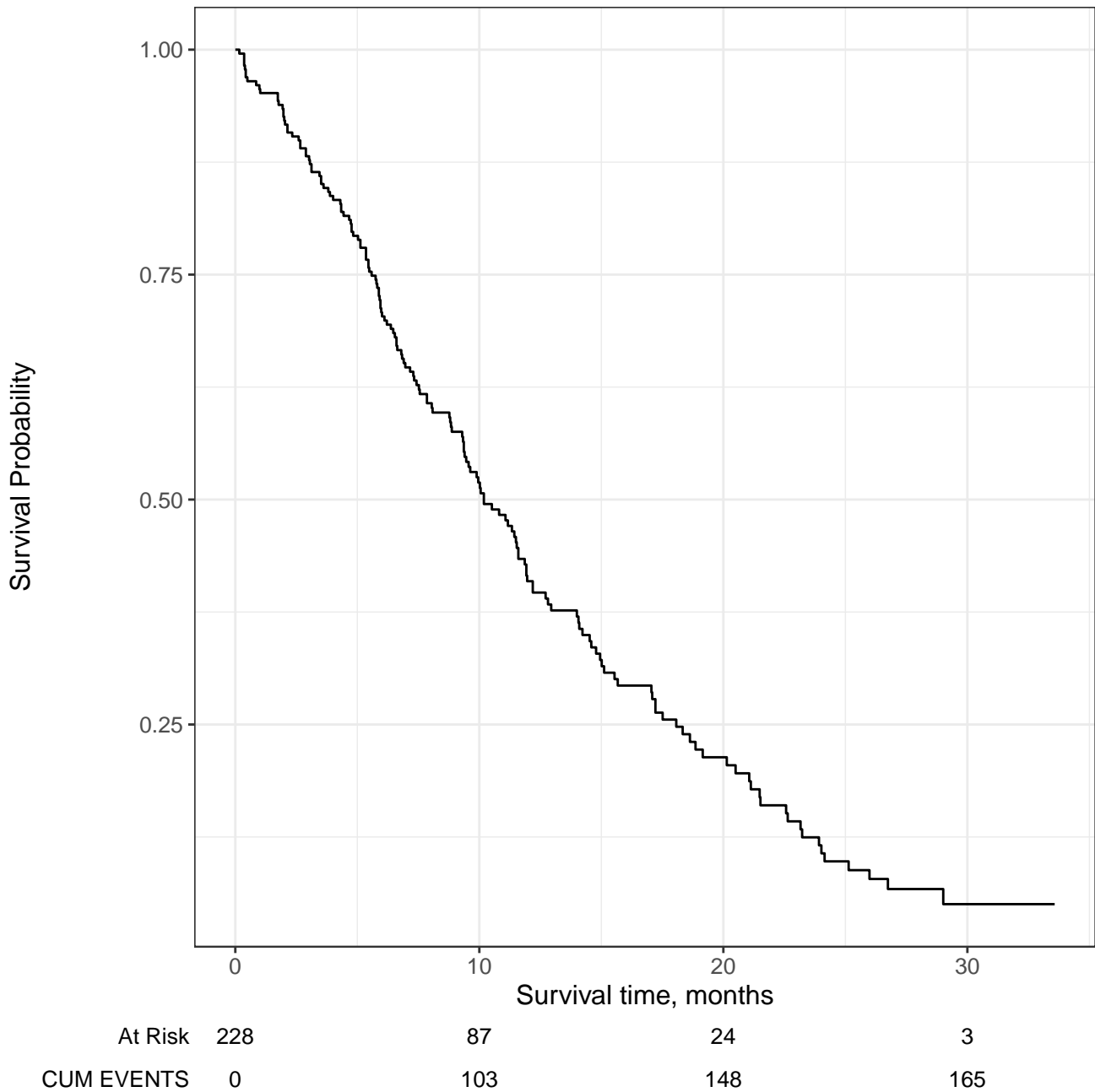
Female, Symptomatic and ambulatory

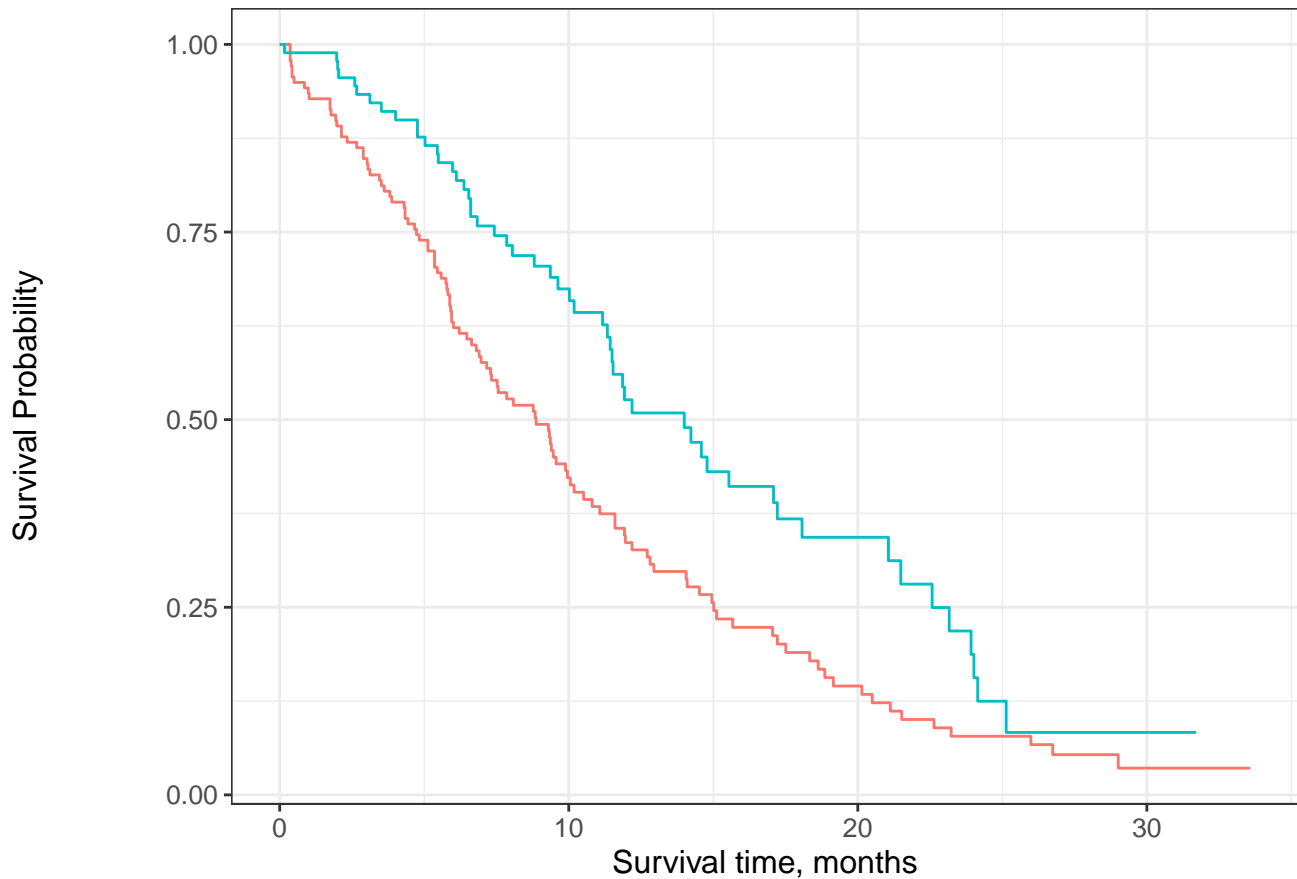
At Risk

Male, Asymptomatic	36	18	6	1
Male, Symptomatic and ambulatory	71	20	5	1
Male, In bed <50% of the day	29	6	2	0
Male, In bed > 50% of the day	1	0	0	0
Female, Asymptomatic	27	13	2	0
Female, Symptomatic and ambulatory	42	23	8	1
Female, In bed <50% of the day	21	7	1	0

Events

Male, Asymptomatic	0	13	24	28
Male, Symptomatic and ambulatory	0	39	51	54
Male, In bed <50% of the day	0	22	26	28
Male, In bed > 50% of the day	0	1	1	1
Female, Asymptomatic	0	4	8	9
Female, Symptomatic and ambulatory	0	12	22	28
Female, In bed <50% of the day	0	11	15	16





— Male — Female

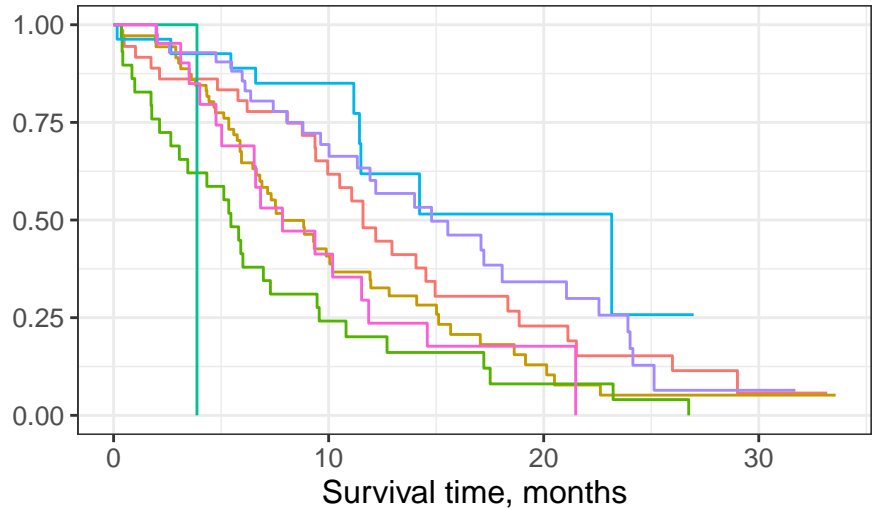
Male

At Risk	138	44	13	2
CUM EVENTS	0	76	103	112

Female

At Risk	90	43	11	1
CUM EVENTS	0	27	45	53

Survival Probability



Male, Asymptomatic

Male, In bed <50% of the day

Female, Asymptomatic

Male, Symptomatic and ambulatory

Male, In bed > 50% of the day

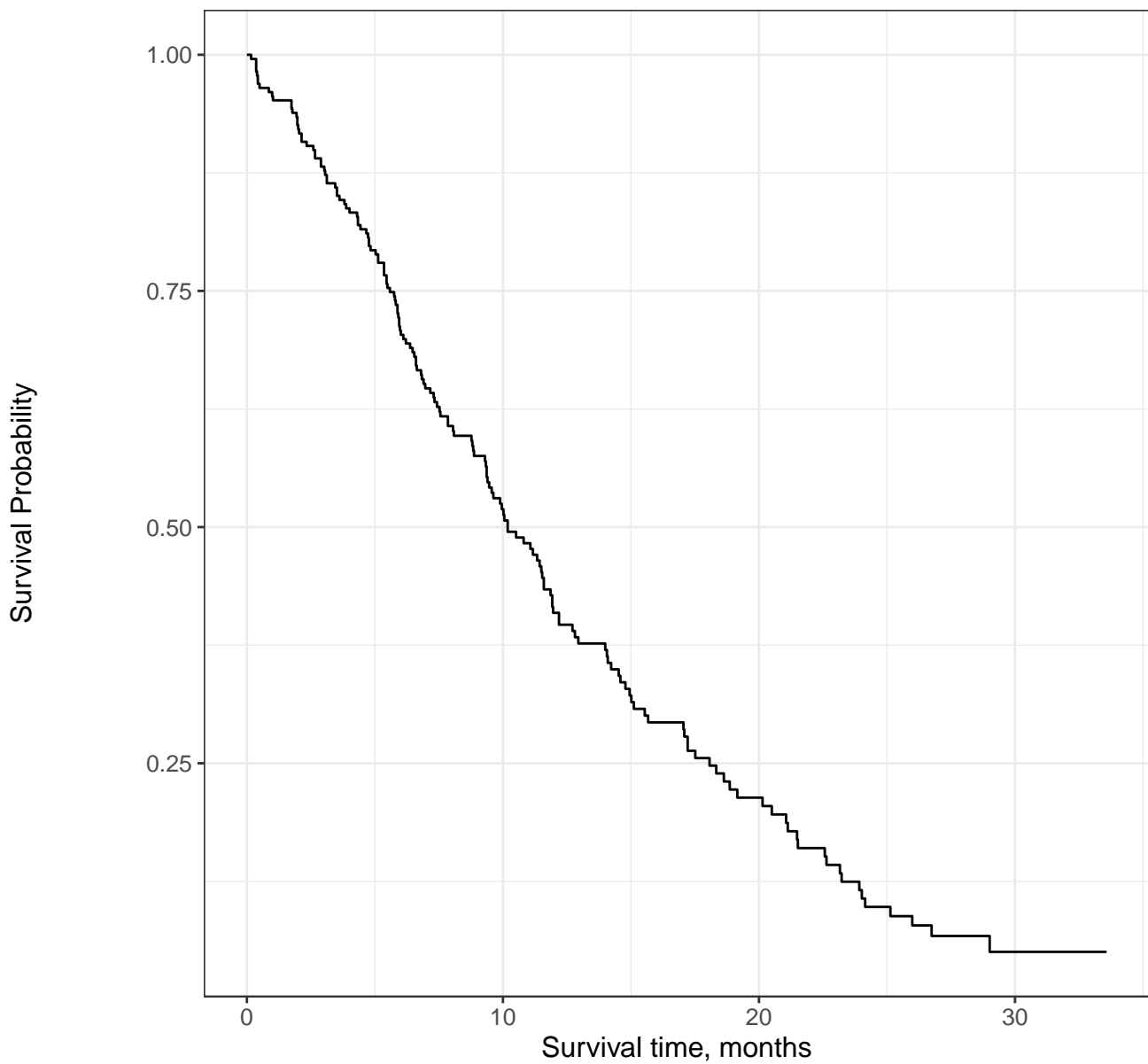
Female, Symptomatic and ambulatory

At Risk

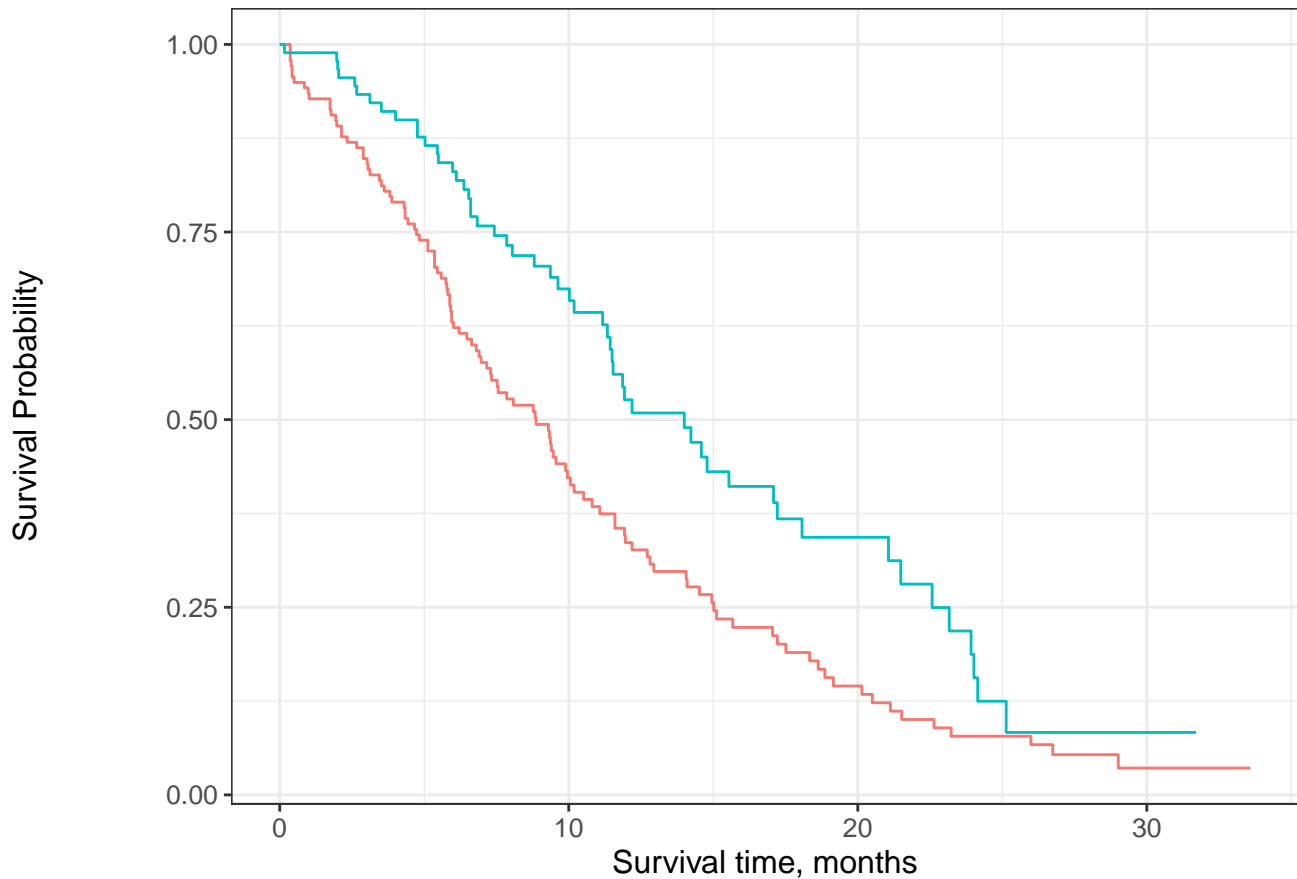
Male, Asymptomatic	36	18	6	1
Male, Symptomatic and ambulatory	71	20	5	1
Male, In bed <50% of the day	29	6	2	0
Male, In bed > 50% of the day	1	0	0	0
Female, Asymptomatic	27	13	2	0
Female, Symptomatic and ambulatory	42	23	8	1
Female, In bed <50% of the day	21	7	1	0

CUM EVENTS

Male, Asymptomatic	0	13	24	28
Male, Symptomatic and ambulatory	0	39	51	54
Male, In bed <50% of the day	0	22	26	28
Male, In bed > 50% of the day	0	1	1	1
Female, Asymptomatic	0	4	8	9
Female, Symptomatic and ambulatory	0	12	22	28
Female, In bed <50% of the day	0	11	15	16



N RISK	228	87	24	3
CUM EVENTS	0	103	148	165



— Male — Female

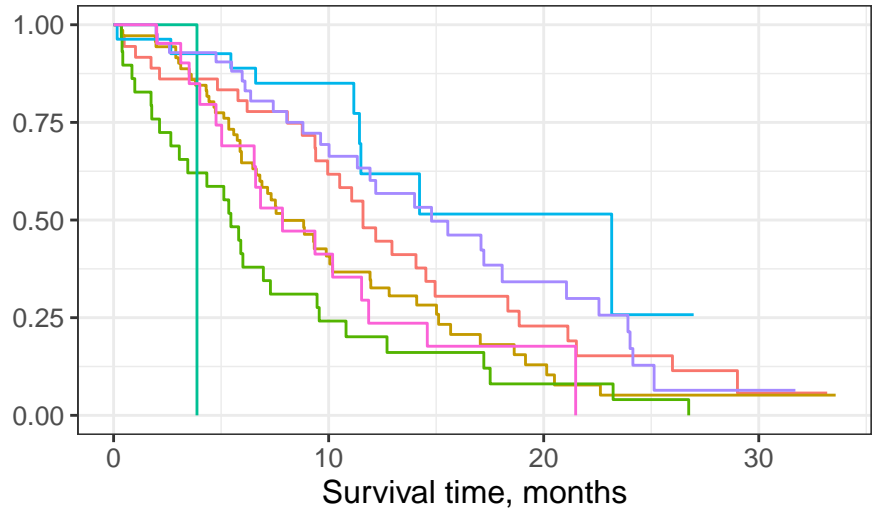
Male

N RISK	138	44	13	2
CUM EVENTS	0	76	103	112

Female

N RISK	90	43	11	1
CUM EVENTS	0	27	45	53

Survival Probability



Male, Asymptomatic

Male, In bed <50% of the day

Female, Asymptomatic

Male, Symptomatic and ambulatory

Male, In bed > 50% of the day

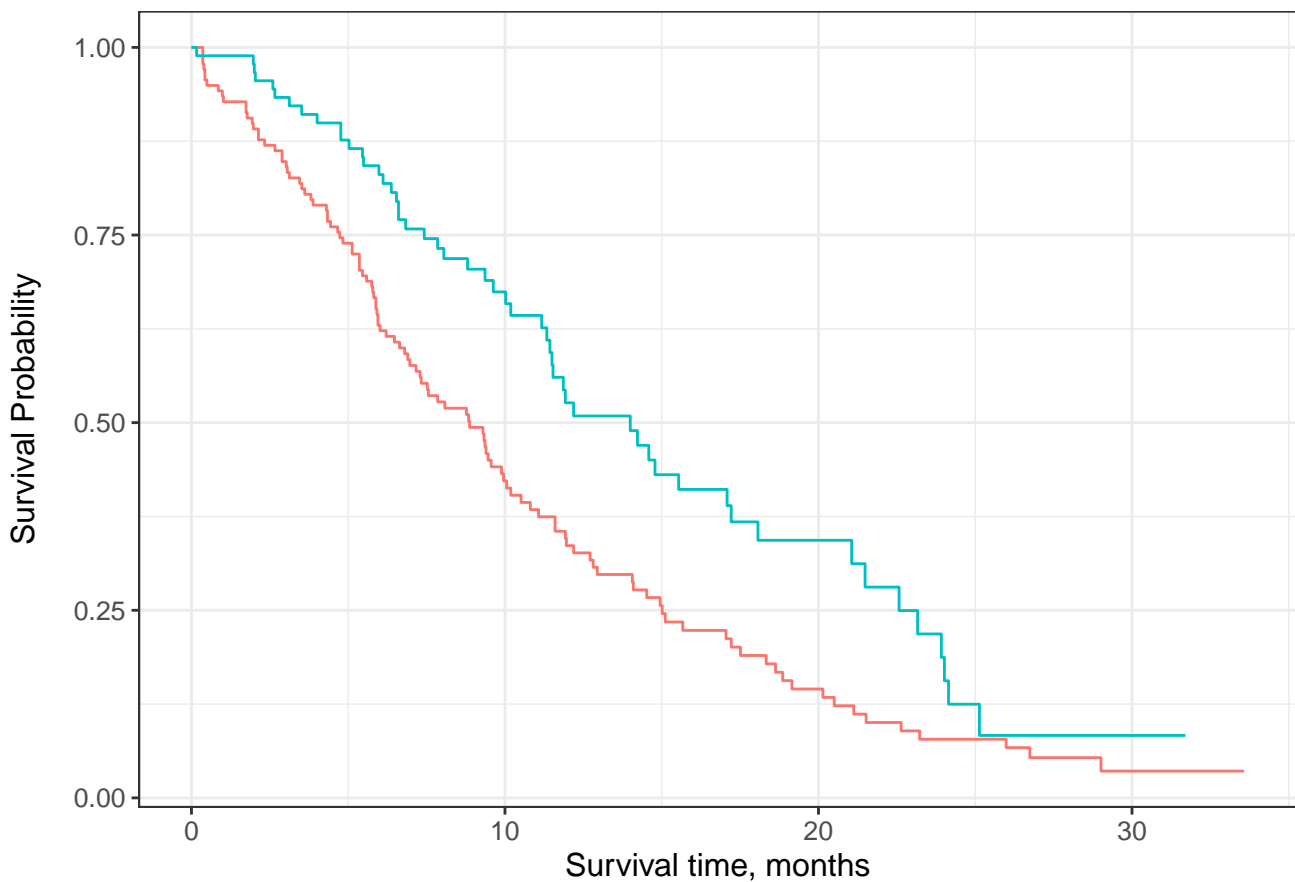
Female, Symptomatic and ambulatory

N RISK

Male, Asymptomatic	36	18	6	1
Male, Symptomatic and ambulatory	71	20	5	1
Male, In bed <50% of the day	29	6	2	0
Male, In bed > 50% of the day	1	0	0	0
Female, Asymptomatic	27	13	2	0
Female, Symptomatic and ambulatory	42	23	8	1
Female, In bed <50% of the day	21	7	1	0

CUM EVENTS

Male, Asymptomatic	0	13	24	28
Male, Symptomatic and ambulatory	0	39	51	54
Male, In bed <50% of the day	0	22	26	28
Male, In bed > 50% of the day	0	1	1	1
Female, Asymptomatic	0	4	8	9
Female, Symptomatic and ambulatory	0	12	22	28
Female, In bed <50% of the day	0	11	15	16



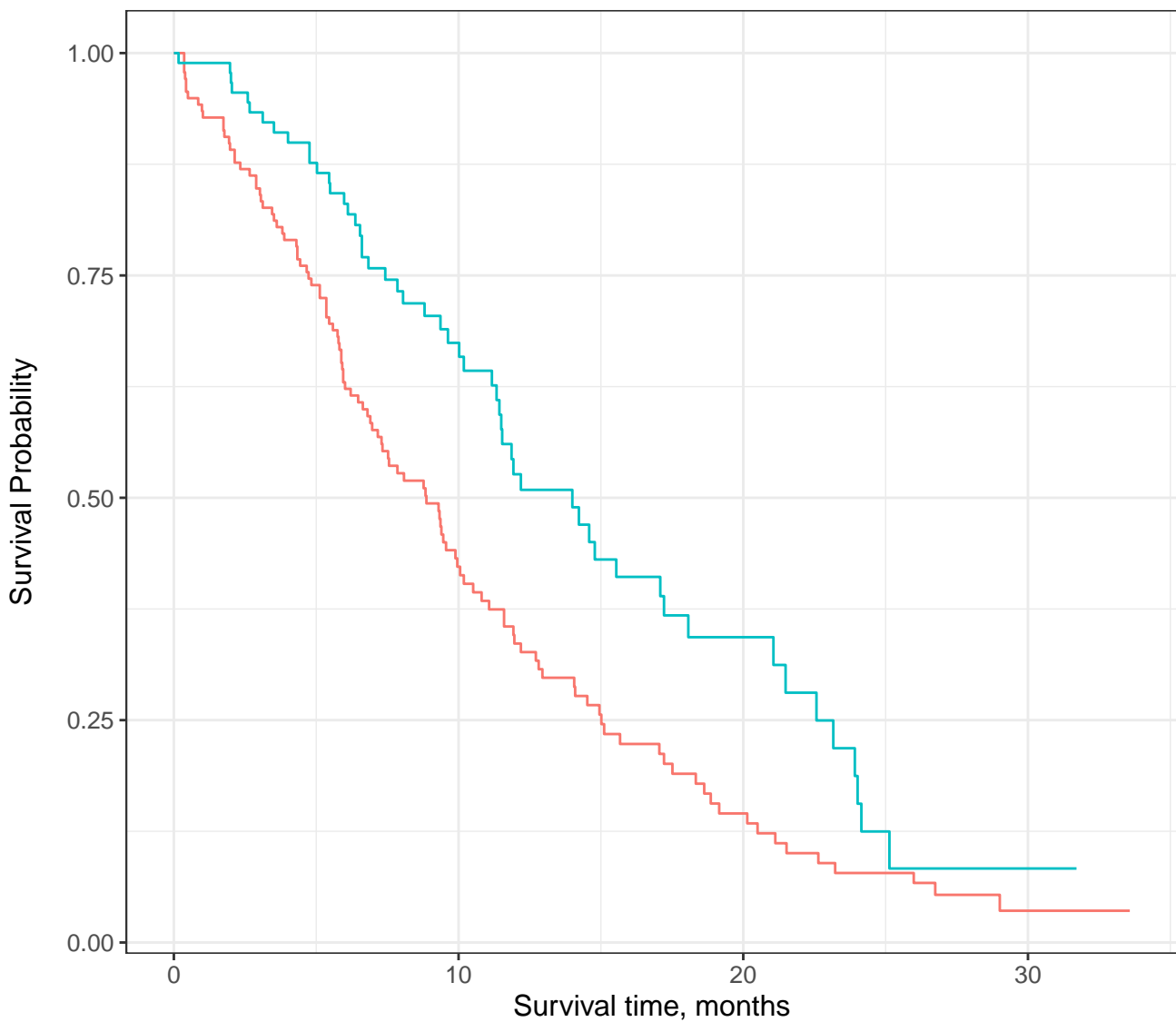
Male

At Risk	138	44	13	2
Events	0	76	103	112

Female

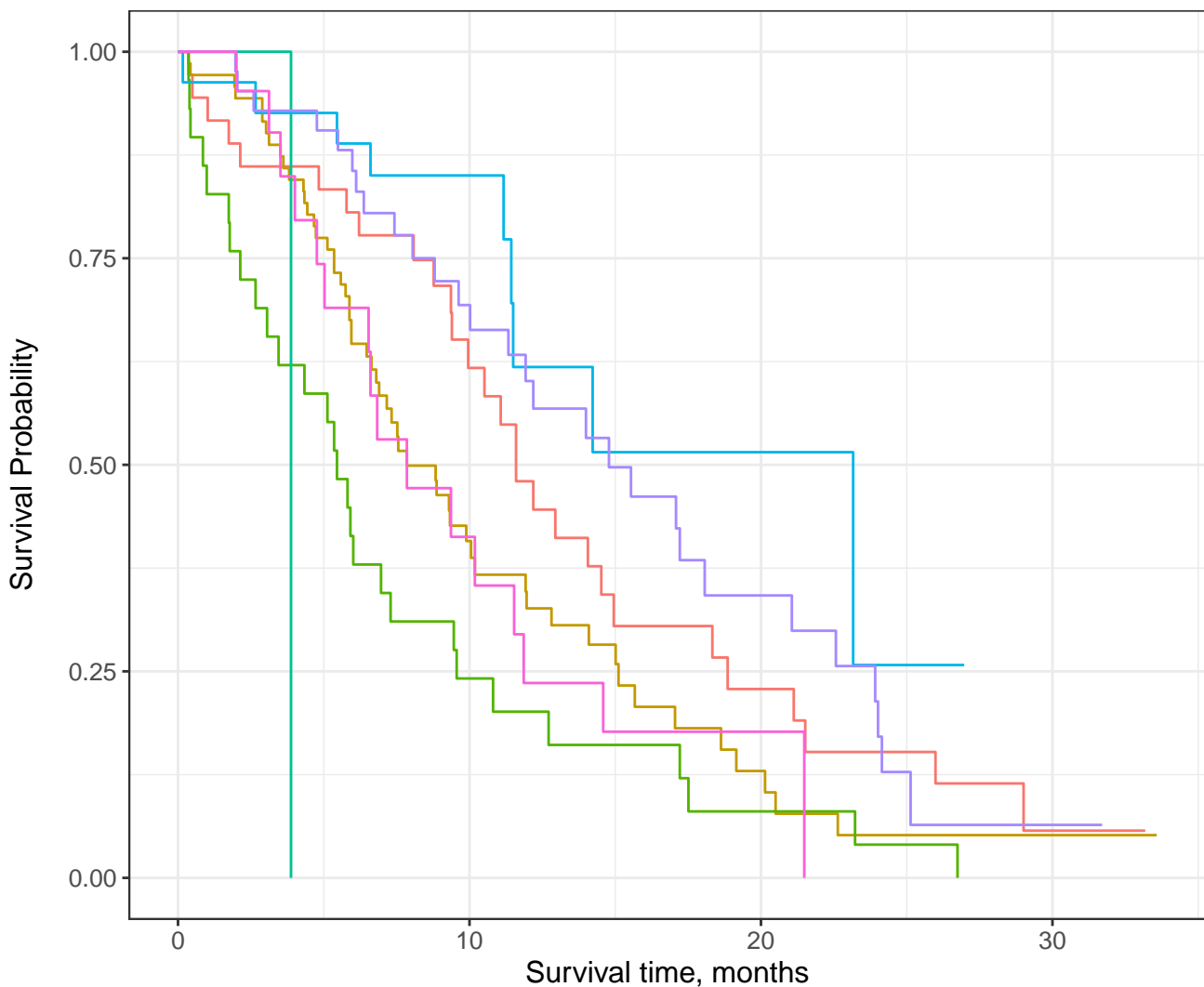
At Risk	90	43	11	1
Events	0	27	45	53

		Survival time, months			
		Male, In bed <50% of the day	Female, Asymptomatic	Female, Symptomatic and ambulatory	Female, In bed <50% of the day
Survival	Male, Asymptomatic				
	At Risk	36	18	6	1
	Events	0	13	24	28
Survival	Male, Symptomatic and ambulatory				
	At Risk	71	20	5	1
	Events	0	39	51	54
Survival	Male, In bed <50% of the day				
	At Risk	29	6	2	0
	Events	0	22	26	28
Survival	Male, In bed > 50% of the day				
	At Risk	1	0	0	0
	Events	0	1	1	1
Survival	Female, Asymptomatic				
	At Risk	27	13	2	0
	Events	0	4	8	9
Survival	Female, Symptomatic and ambulatory				
	At Risk	42	23	8	1
	Events	0	12	22	28
Survival	Female, In bed <50% of the day				
	At Risk	21	7	1	0
	Events	0	11	15	16



Male Female

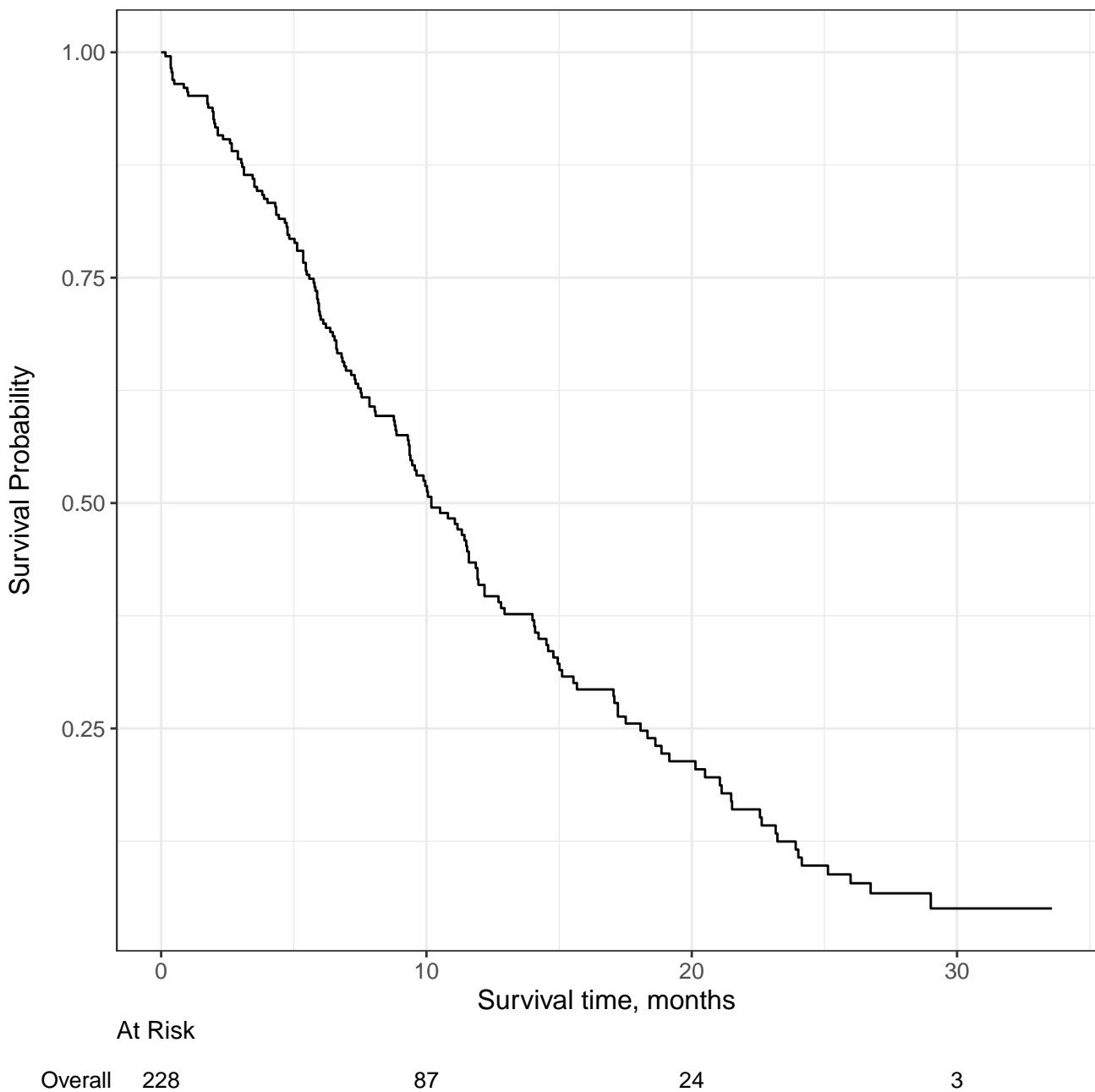
At Risk	228	87	24	3
Events	0	103	148	165

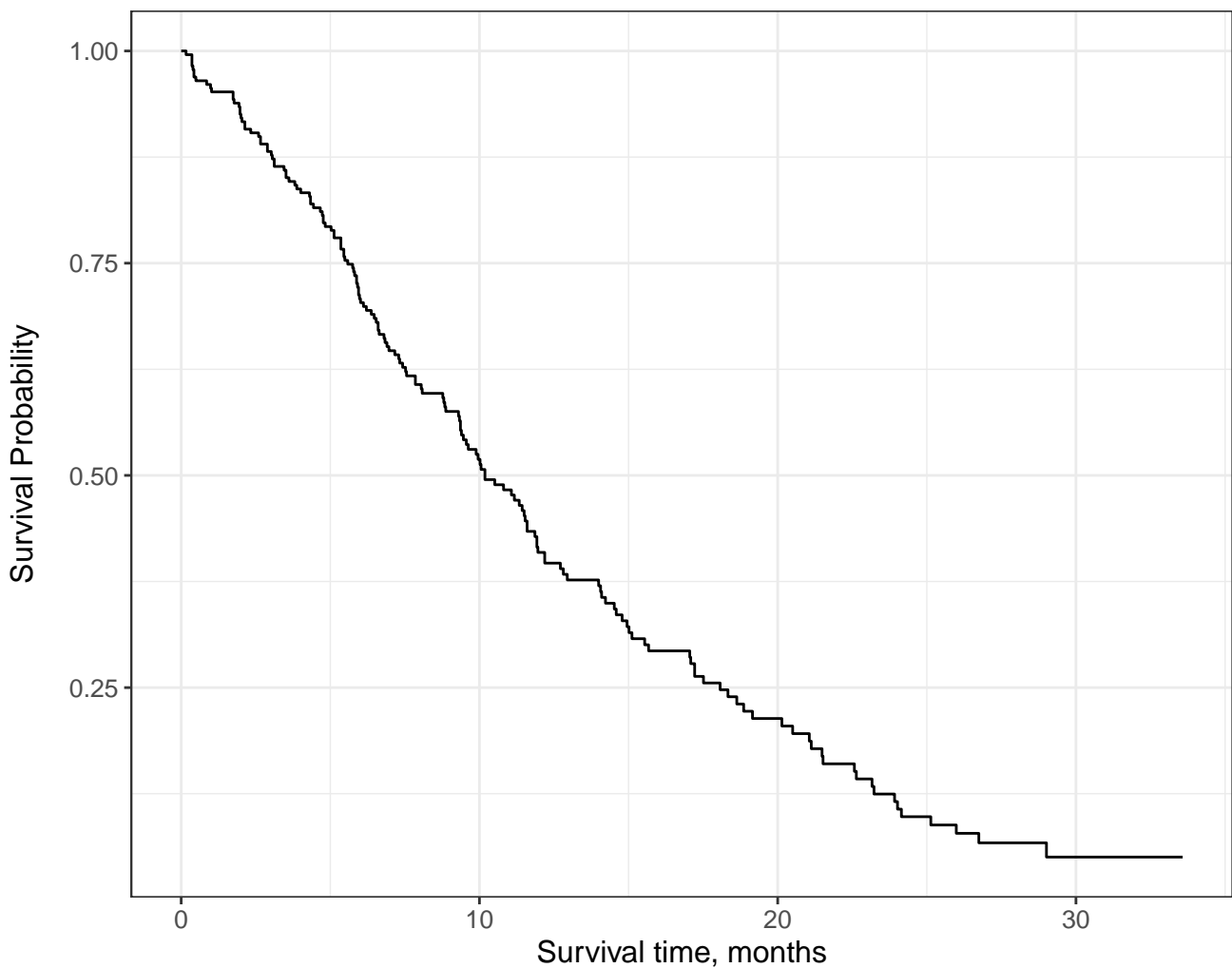


Asymptomatic Male, In bed <50% of the day Female, Asymptomatic Female, Symptomatic and ambulatory

Asymptomatic and ambulatory Male, In bed > 50% of the day Female, Symptomatic

At Risk	227	87	24	3
Events	0	102	147	218



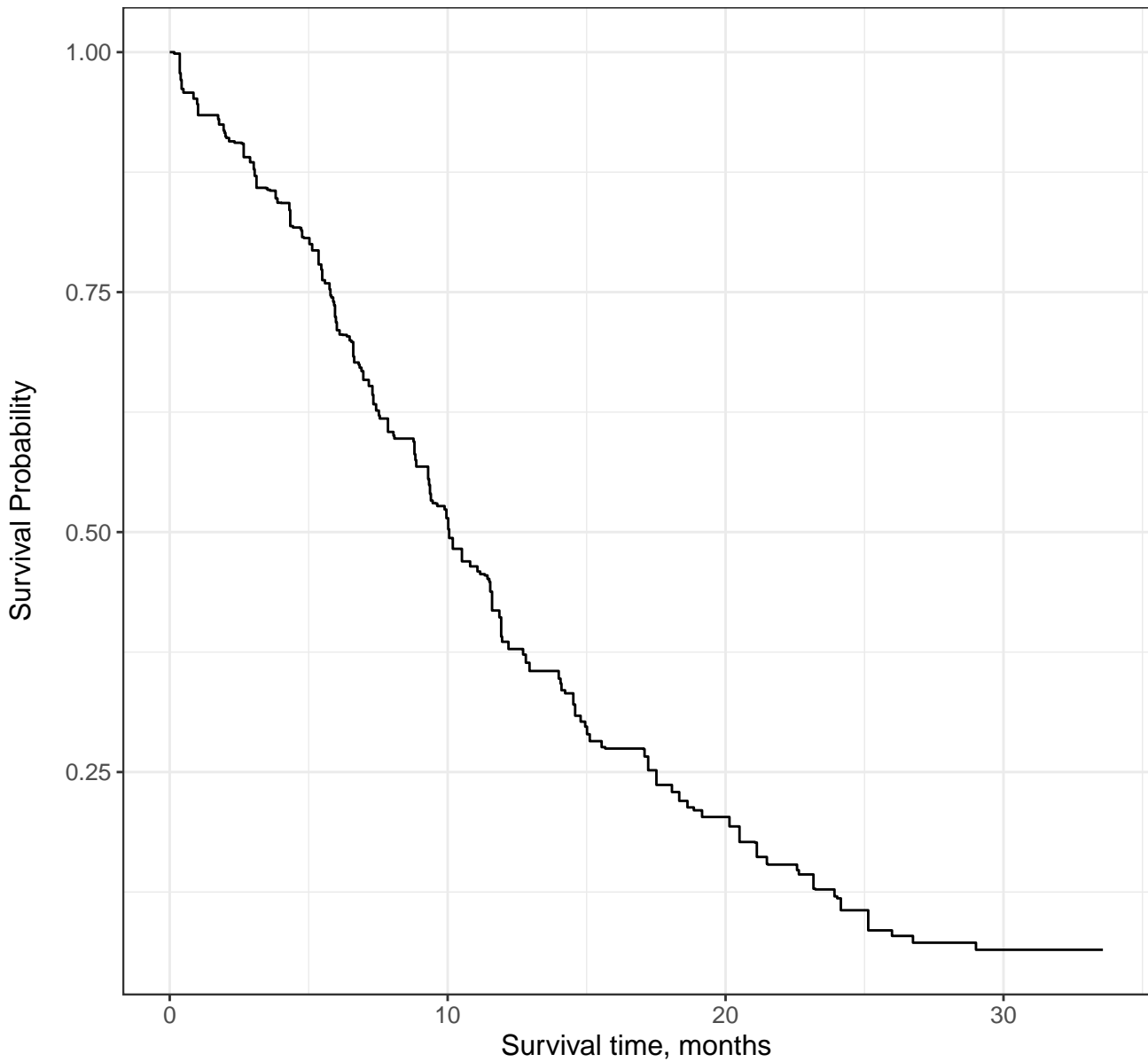


At Risk

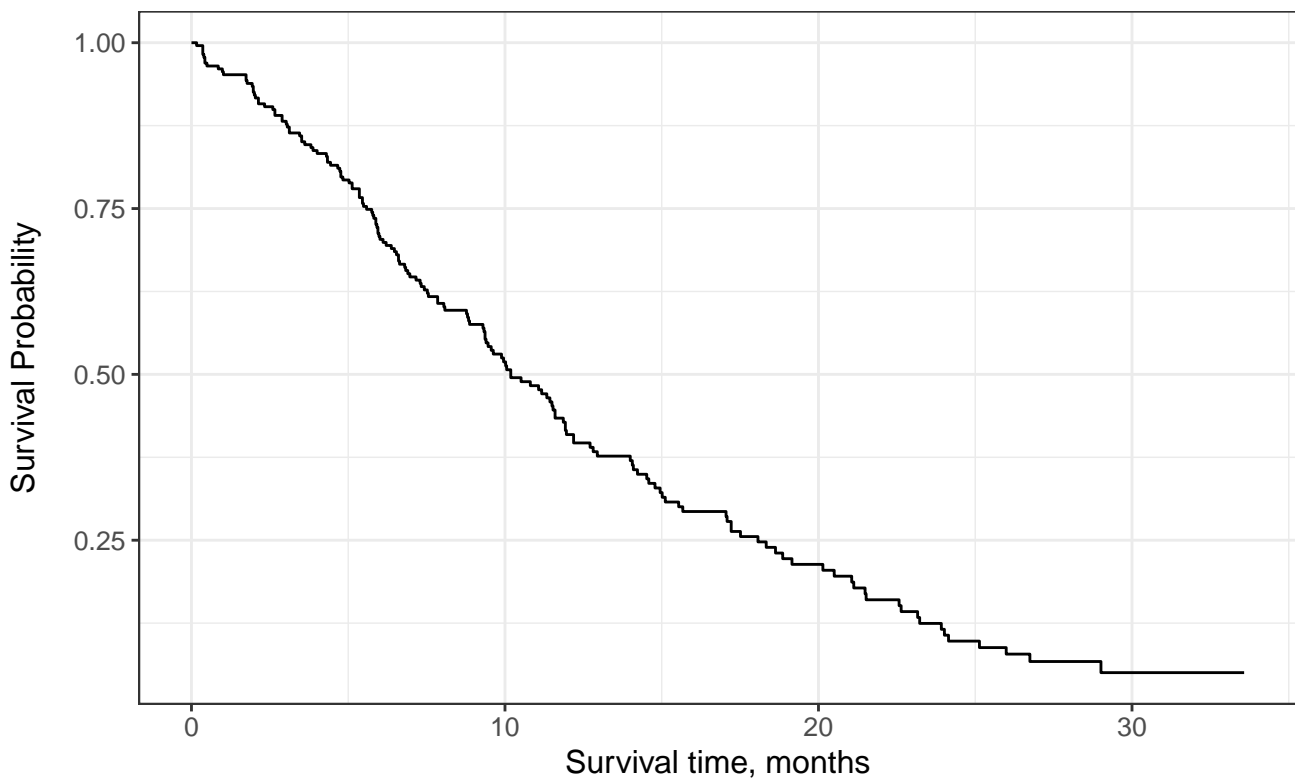
	0	5	10	15	20	25	30	35
Overall	228	188	87	58	24	12	3	0

Events

	0	5	10	15	20	25	30	35
Overall	0	103	148	165	0	0	0	0



At Risk	187	71	17	2
Events	0	85	122	133



At Risk 228

87

24

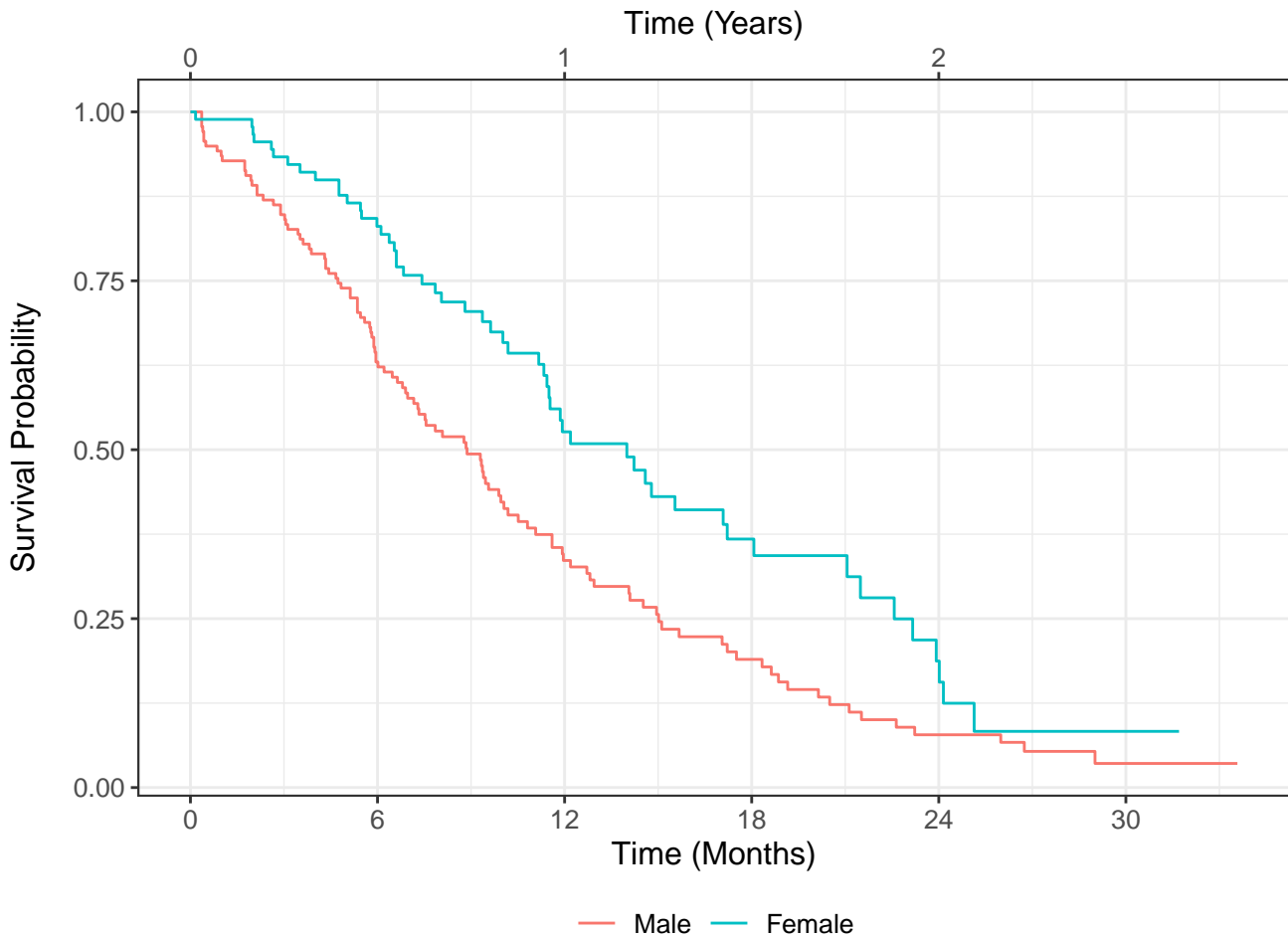
3

Events 0

103

148

165

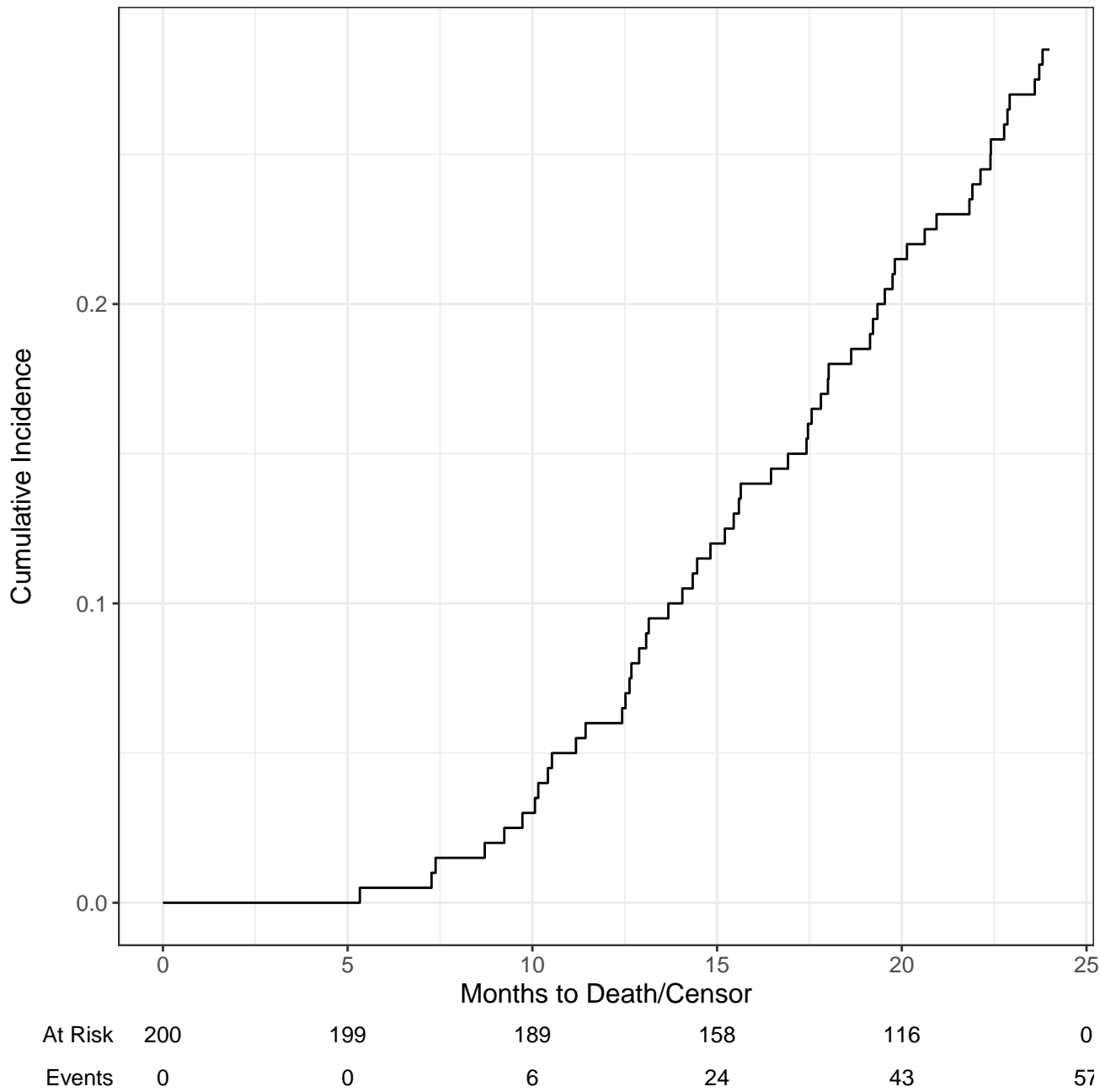


Male

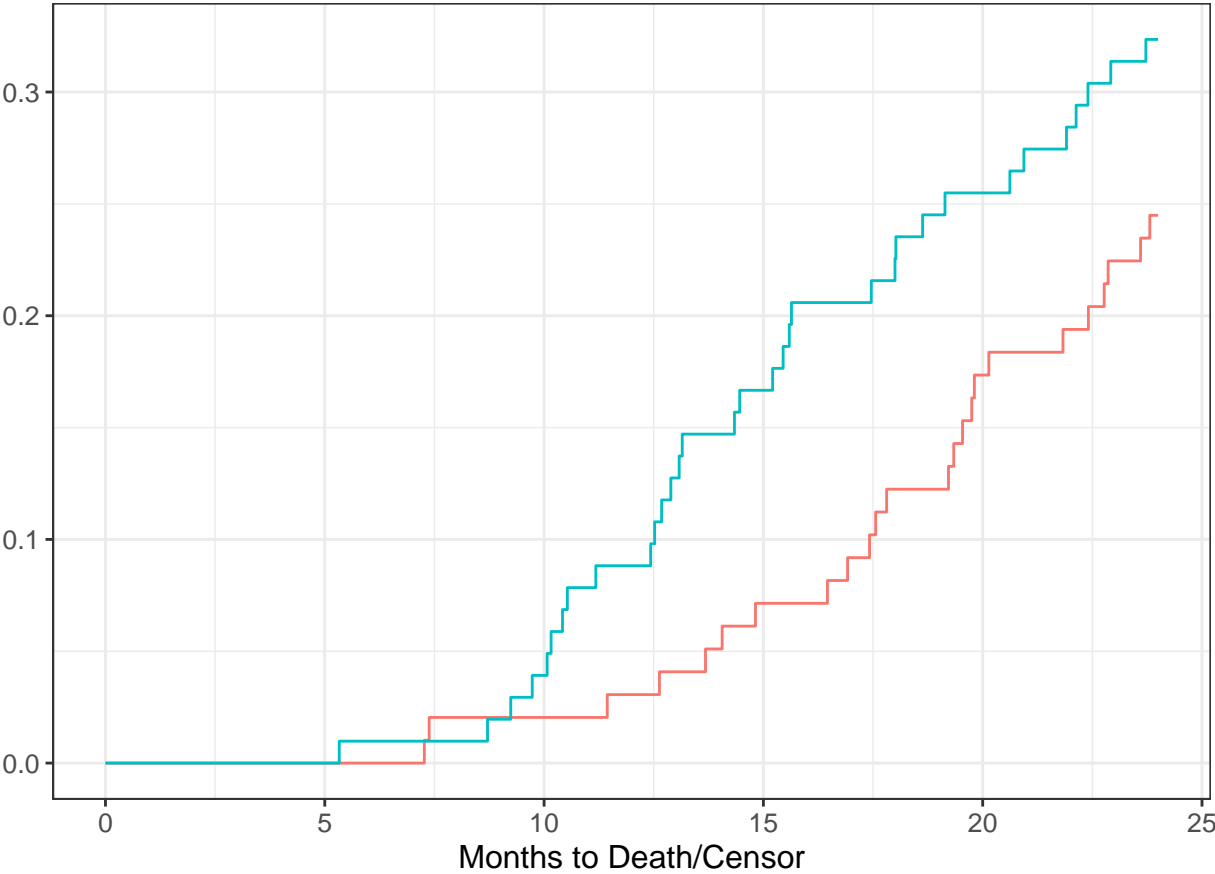
At Risk	138	86	35	17	7	2
Events	0	51	85	99	109	112

Female

At Risk	90	70	30	15	6	1
Events	0	15	36	44	50	53



Cumulative Incidence



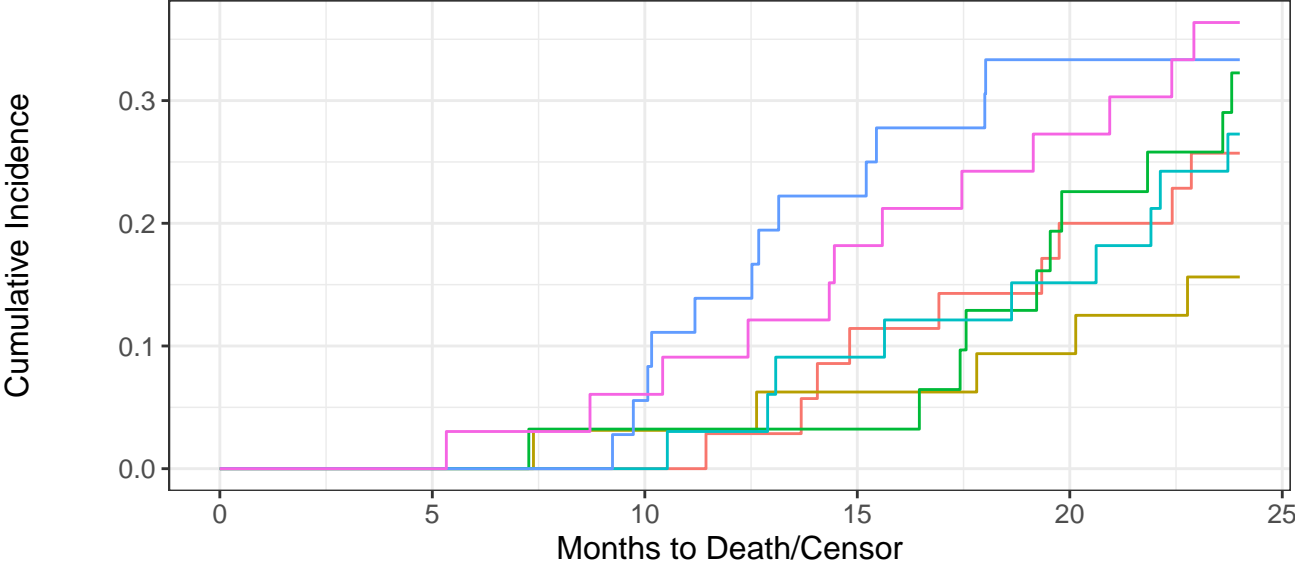
— Drug A — Drug B

Drug A

At Risk	98	97	94	83	61	0
Events	0	0	2	7	17	24

Drug B

At Risk	102	102	95	75	55	0
Events	0	0	4	17	26	30



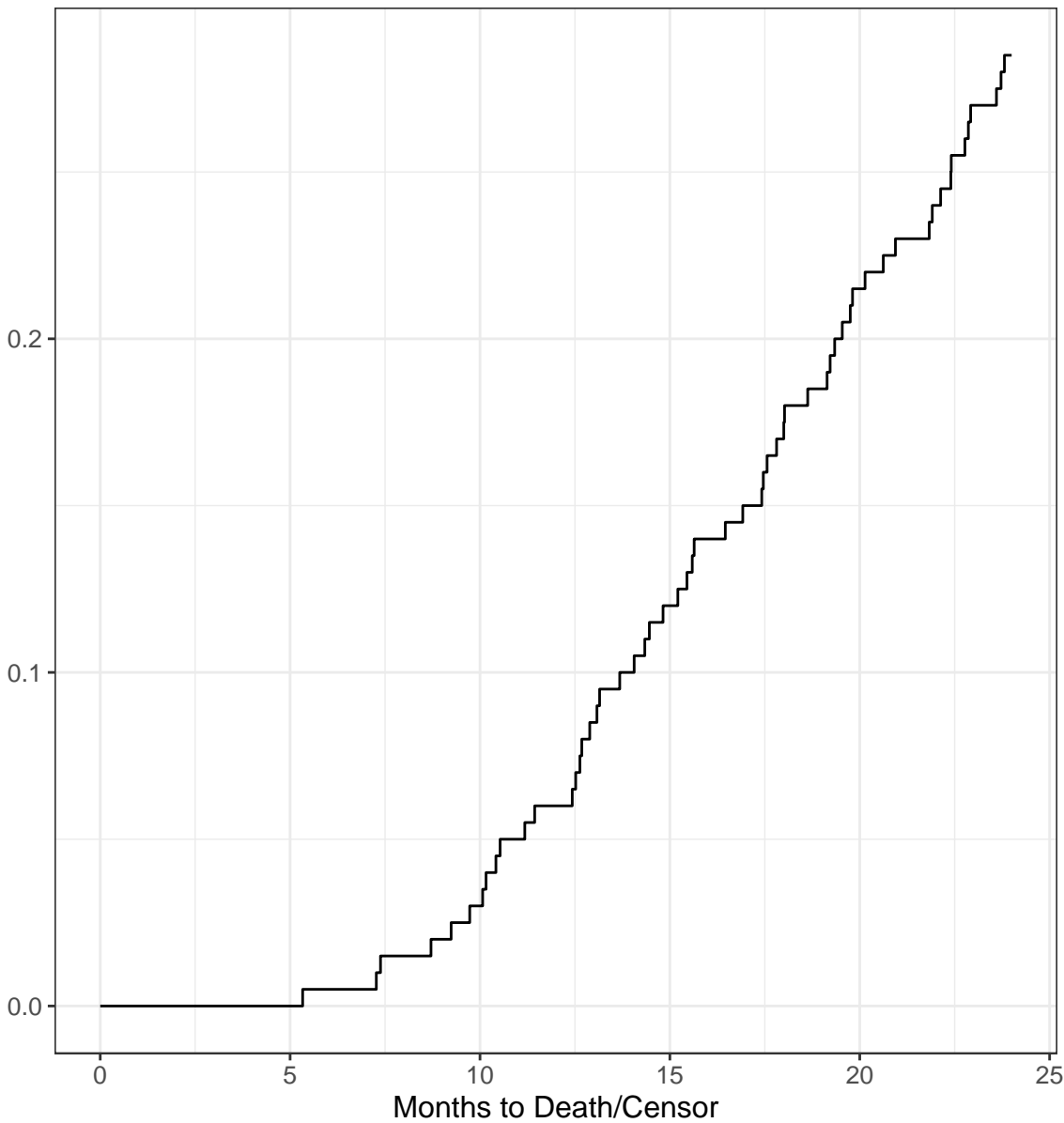
At Risk

Drug A, I	35	35	35	30	22	0
Drug A, II	32	32	30	27	23	0
Drug A, III	31	30	29	26	16	0
Drug B, I	33	33	33	28	23	0
Drug B, II	36	36	32	23	17	0
Drug B, III	33	33	30	24	15	0

Events

Drug A, I	0	0	0	4	7	9
Drug A, II	0	0	1	2	3	5
Drug A, III	0	0	1	1	7	10
Drug B, I	0	0	0	3	5	9
Drug B, II	0	0	2	8	12	12
Drug B, III	0	0	2	6	9	12

Cumulative Incidence



At Risk 200

199

189

158

116

0

CUM EVENTS 0

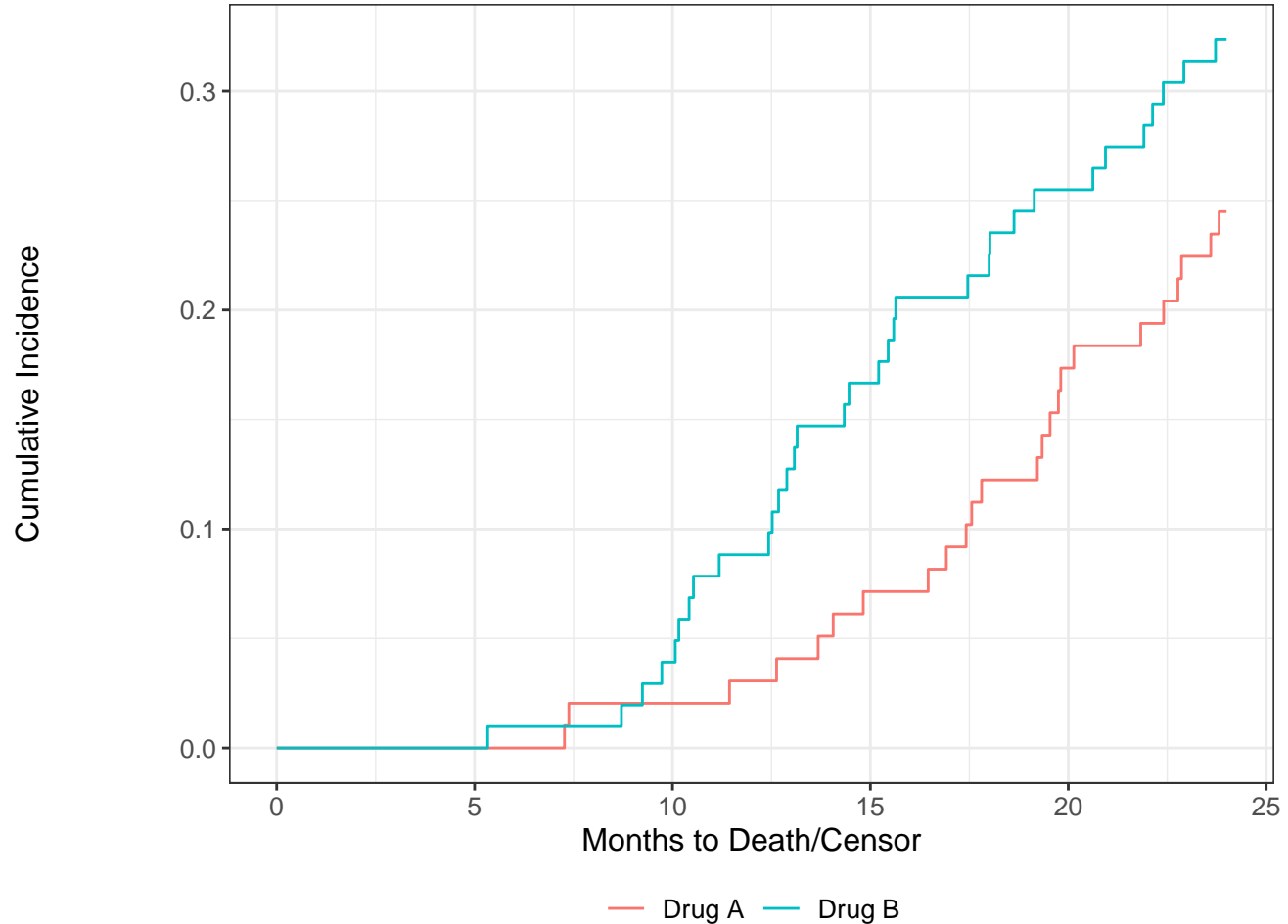
0

6

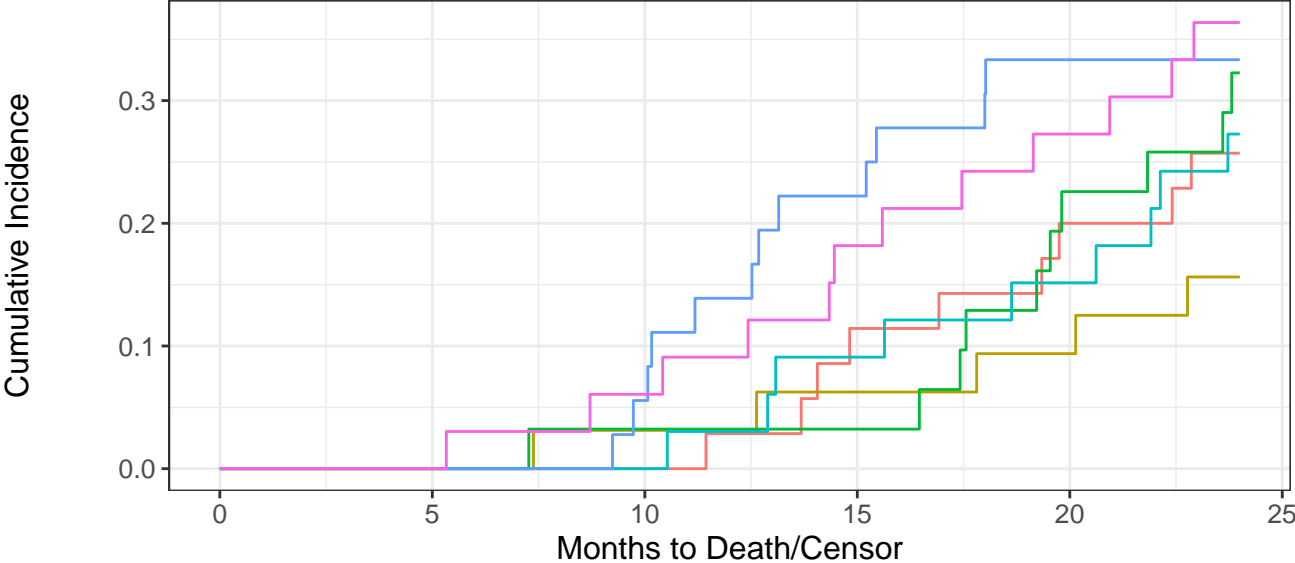
24

43

57



Drug A						
At Risk	98	97	94	83	61	0
CUM EVENTS	0	0	2	7	17	24
Drug B						
At Risk	102	102	95	75	55	0
CUM EVENTS	0	0	4	17	26	30



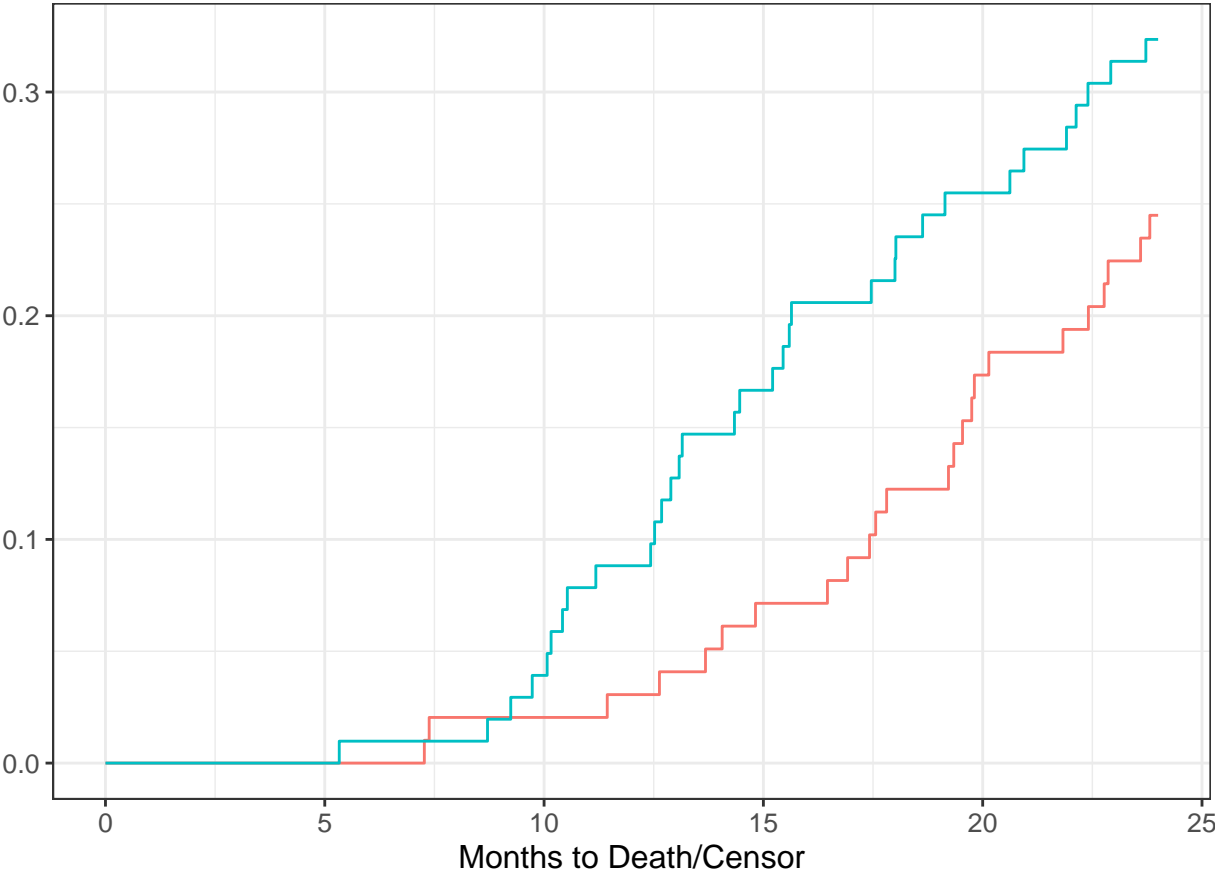
At Risk

Drug A, I	35	35	35	30	22	0
Drug A, II	32	32	30	27	23	0
Drug A, III	31	30	29	26	16	0
Drug B, I	33	33	33	28	23	0
Drug B, II	36	36	32	23	17	0
Drug B, III	33	33	30	24	15	0

CUM EVENTS

Drug A, I	0	0	0	4	7	9
Drug A, II	0	0	1	2	3	5
Drug A, III	0	0	1	1	7	10
Drug B, I	0	0	0	3	5	9
Drug B, II	0	0	2	8	12	12
Drug B, III	0	0	2	6	9	12

Cumulative Incidence



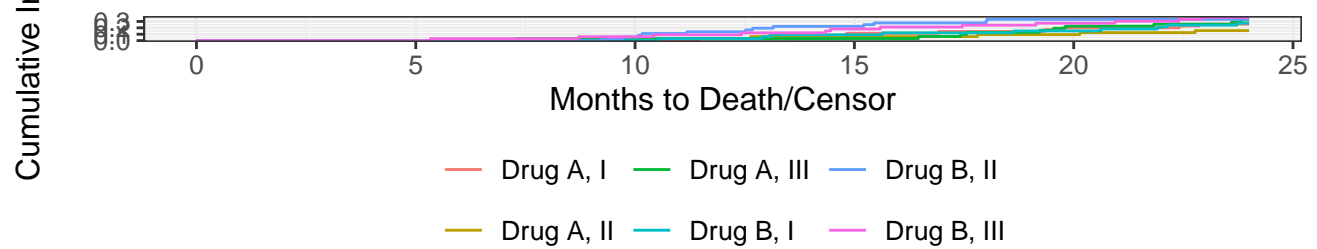
— Drug A — Drug B

Drug A

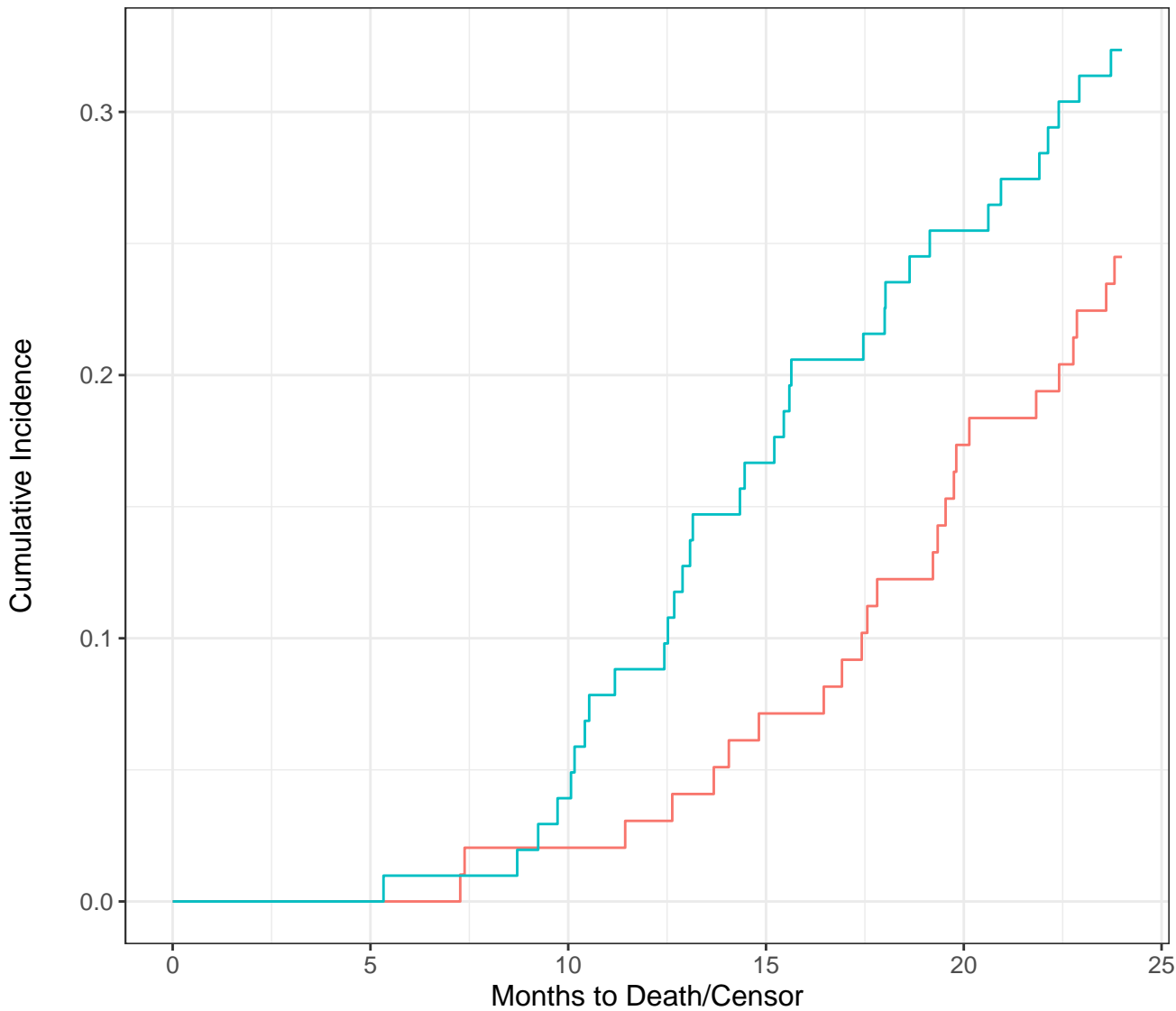
At Risk	98	97	94	83	61	0
Events	0	0	2	7	17	24

Drug B

At Risk	102	102	95	75	55	0
Events	0	0	4	17	26	30

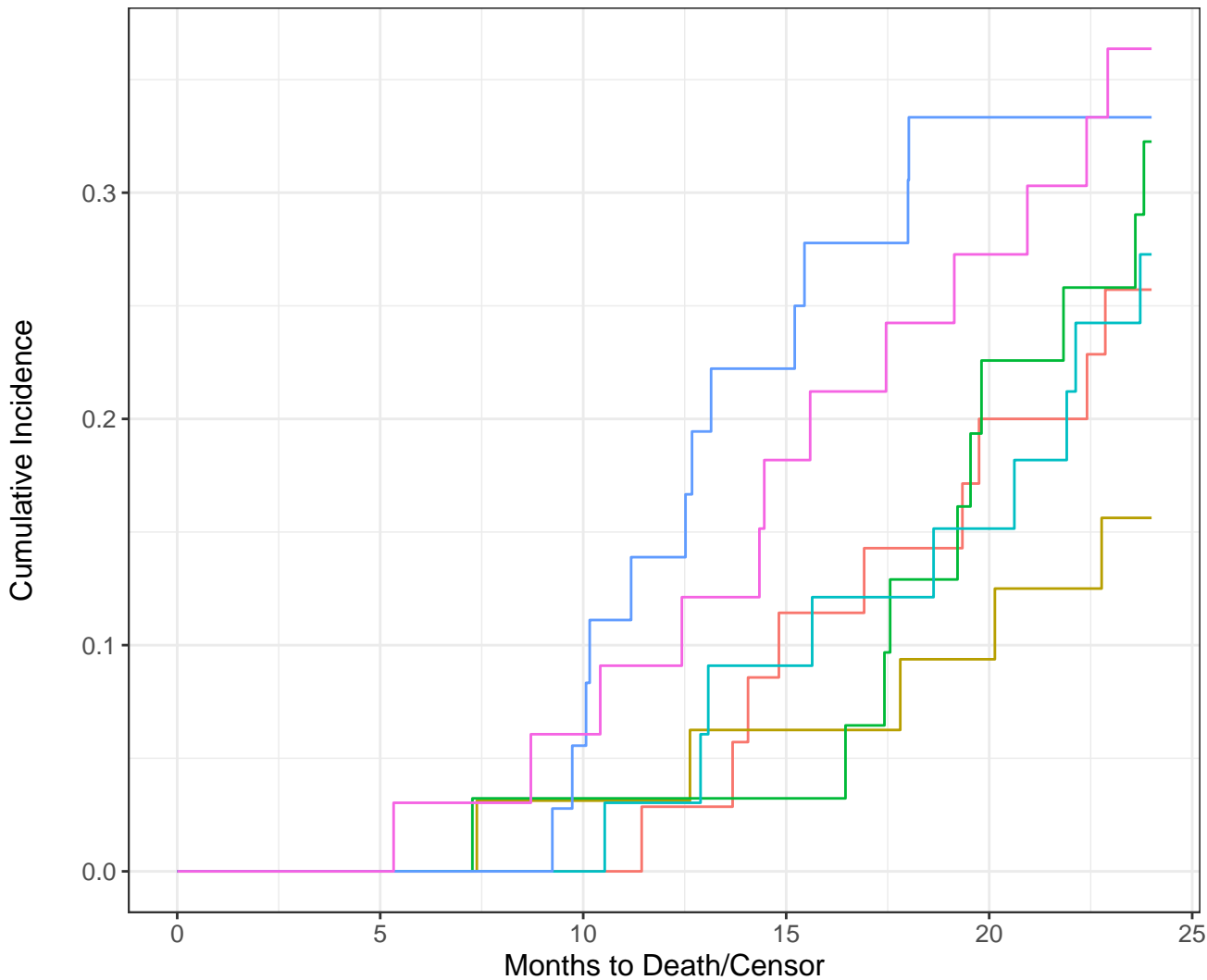


Drug A, I						
At Risk	35	35	35	30	22	0
Events	0	0	0	4	7	9
Drug A, II						
At Risk	32	32	30	27	23	0
Events	0	0	1	2	3	5
Drug A, III						
At Risk	31	30	29	26	16	0
Events	0	0	1	1	7	10
Drug B, I						
At Risk	33	33	33	28	23	0
Events	0	0	0	3	5	9
Drug B, II						
At Risk	36	36	32	23	17	0
Events	0	0	2	8	12	12
Drug B, III						
At Risk	33	33	30	24	15	0
Events	0	0	2	6	9	12

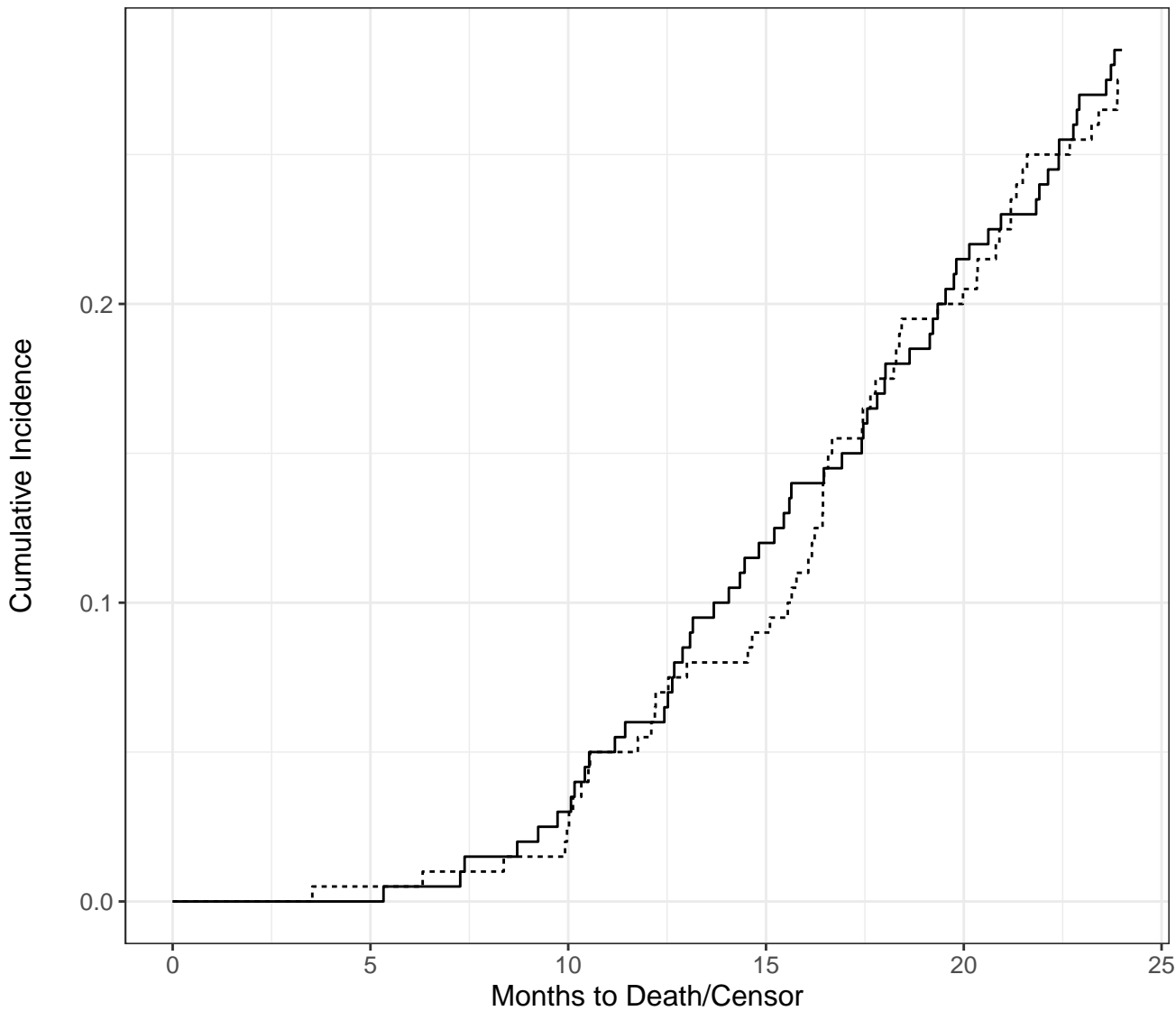


— Drug A — Drug B

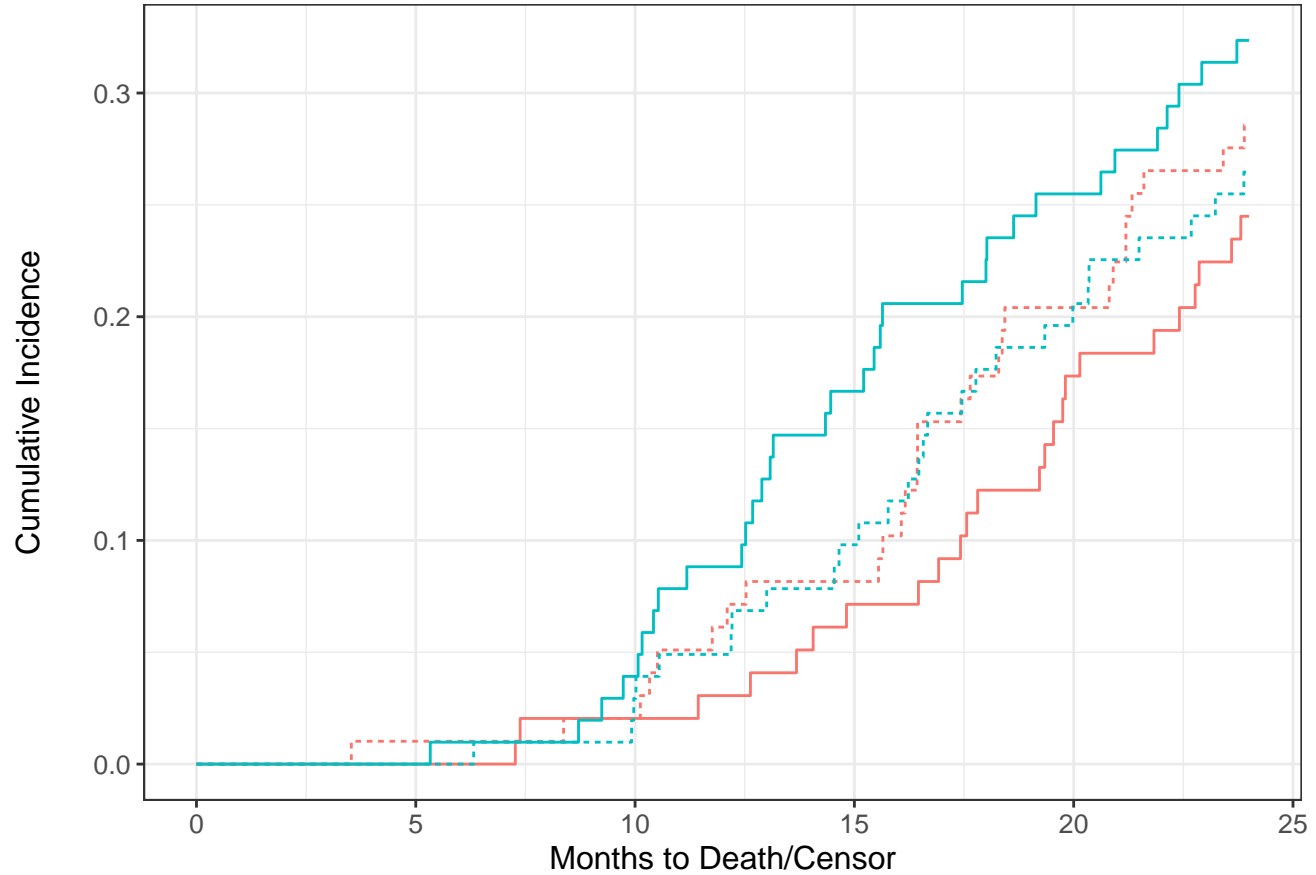
At Risk	200	199	189	158	116	0
Events	0	0	6	24	43	57



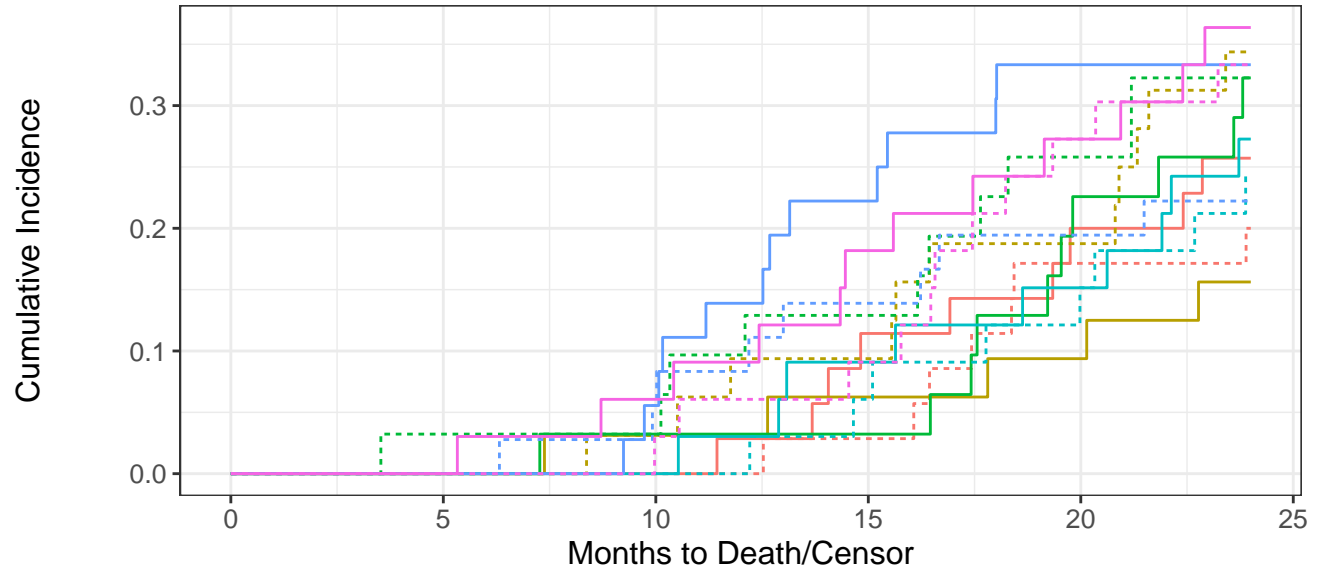
At Risk	200	199	189	158	116	0
Events	0	0	6	24	43	57



At Risk	200	199	189	158	116	0
Events	0	1	11	42	84	11



Drug A					
At Risk	98	97	94	83	61
Events	0	1	4	15	37
Drug B					
At Risk	102	102	95	75	55
Events	0	0	7	27	47

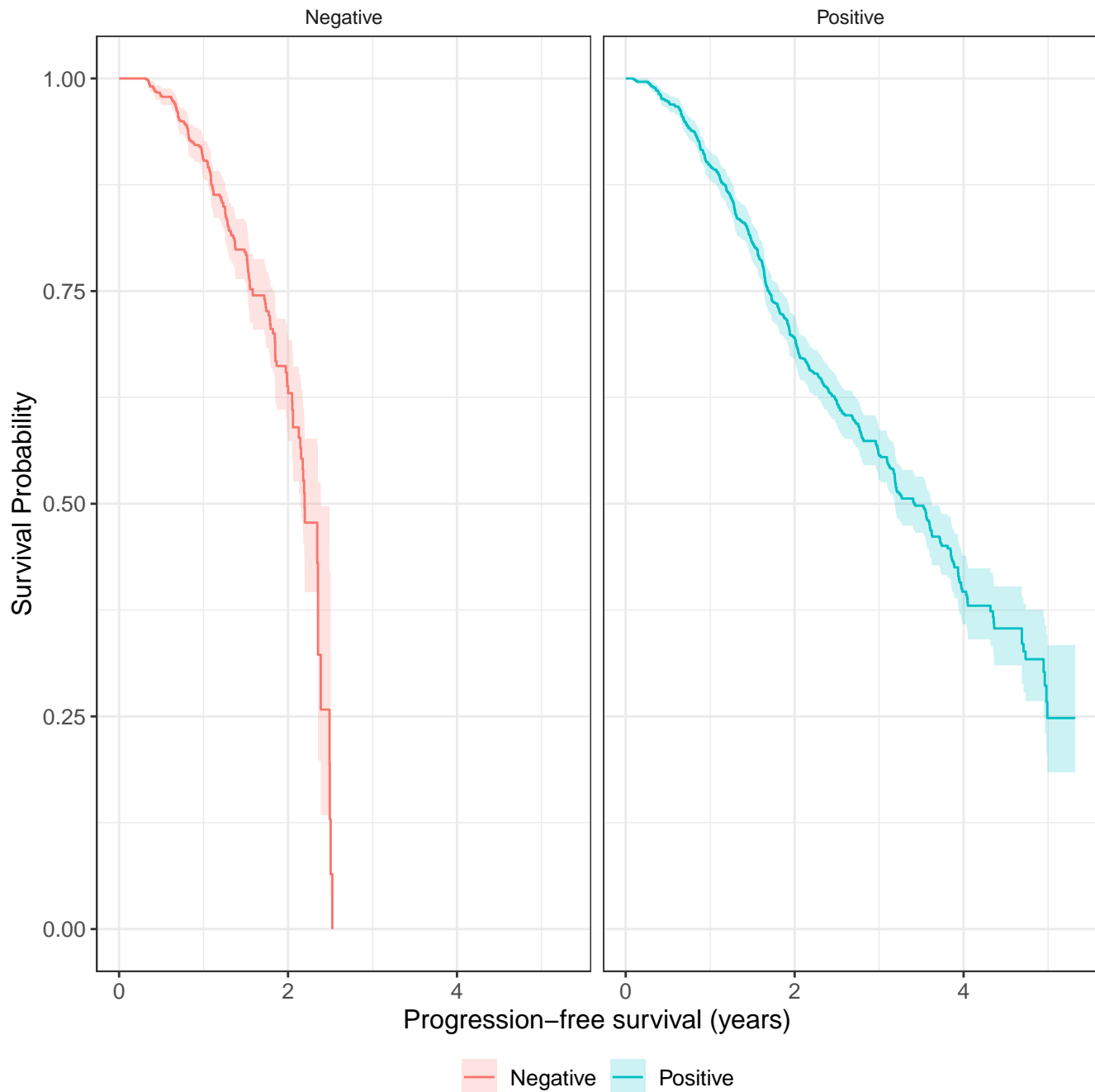


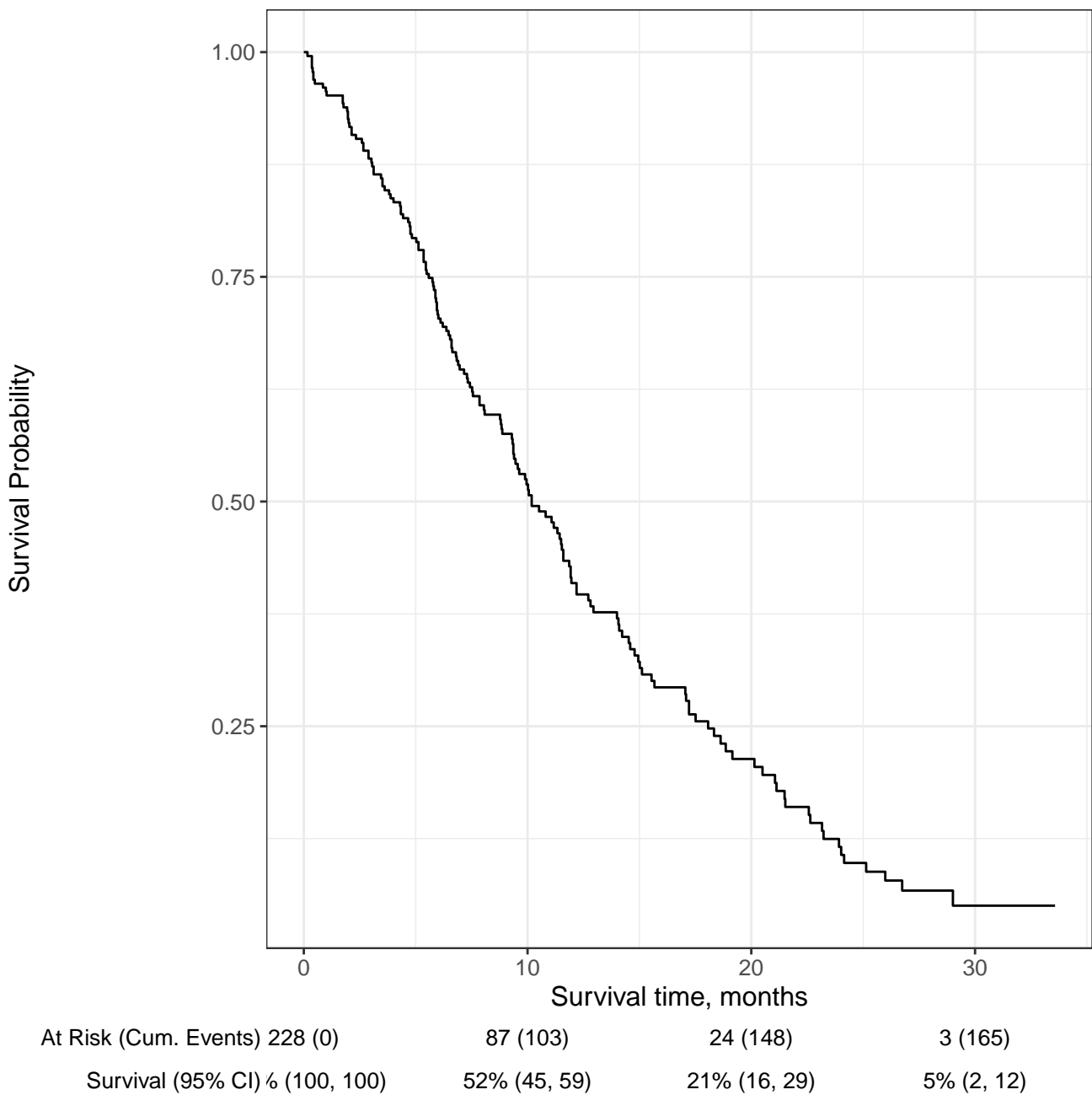
At Risk

Drug A, I	35	35	35	30	22	0
Drug A, II	32	32	30	27	23	0
Drug A, III	31	30	29	26	16	0
Drug B, I	33	33	33	28	23	0
Drug B, II	36	36	32	23	17	0
Drug B, III	33	33	30	24	15	0

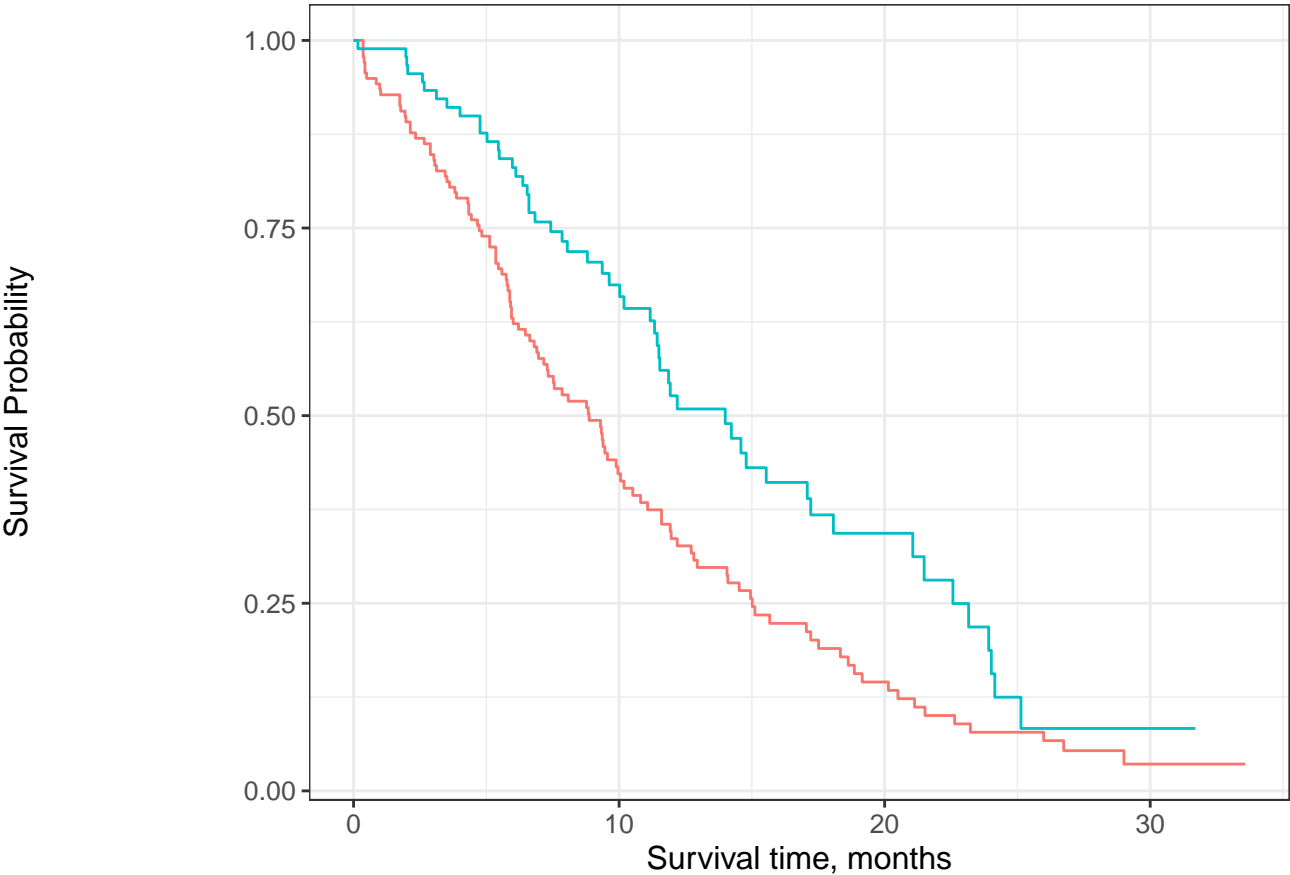
Events

Drug A, I	0	0	0	5	13	16
Drug A, II	0	0	2	5	9	16
Drug A, III	0	1	2	5	15	20
Drug B, I	0	0	0	5	10	17
Drug B, II	0	0	4	13	19	20
Drug B, III	0	0	3	9	18	23





Survival Probability



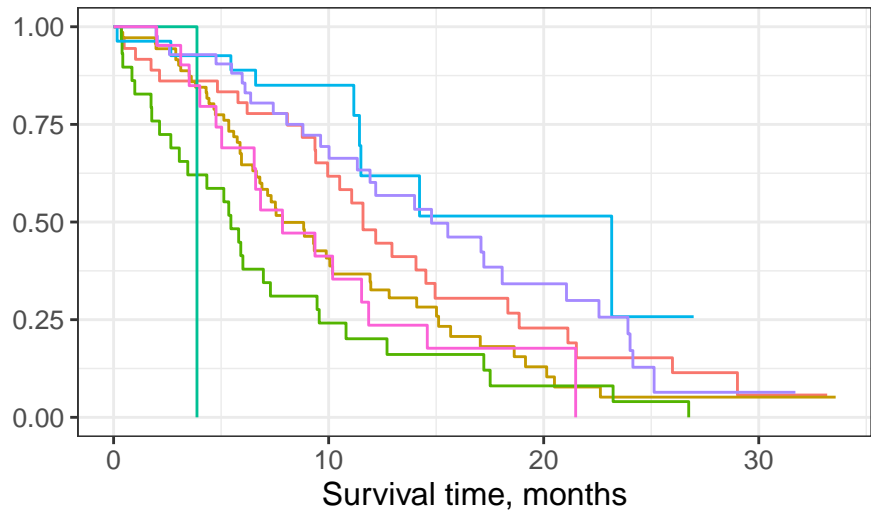
Male

At Risk (Cum. Events)	138 (0)	44 (76)	13 (103)	2 (112)
Survival (95% CI) %	(100, 100)	42% (34, 52)	15% (9, 23)	4% (1, 12)

Female

At Risk (Cum. Events)	90 (0)	43 (27)	11 (45)	1 (53)
Survival (95% CI) %	(100, 100)	67% (58, 78)	34% (24, 49)	8% (3, 27)

Survival Probability



Male, Asymptomatic

Male, In bed <50% of the day

Female, Asymptomatic

Male, Symptomatic and ambulatory

Male, In bed > 50% of the day

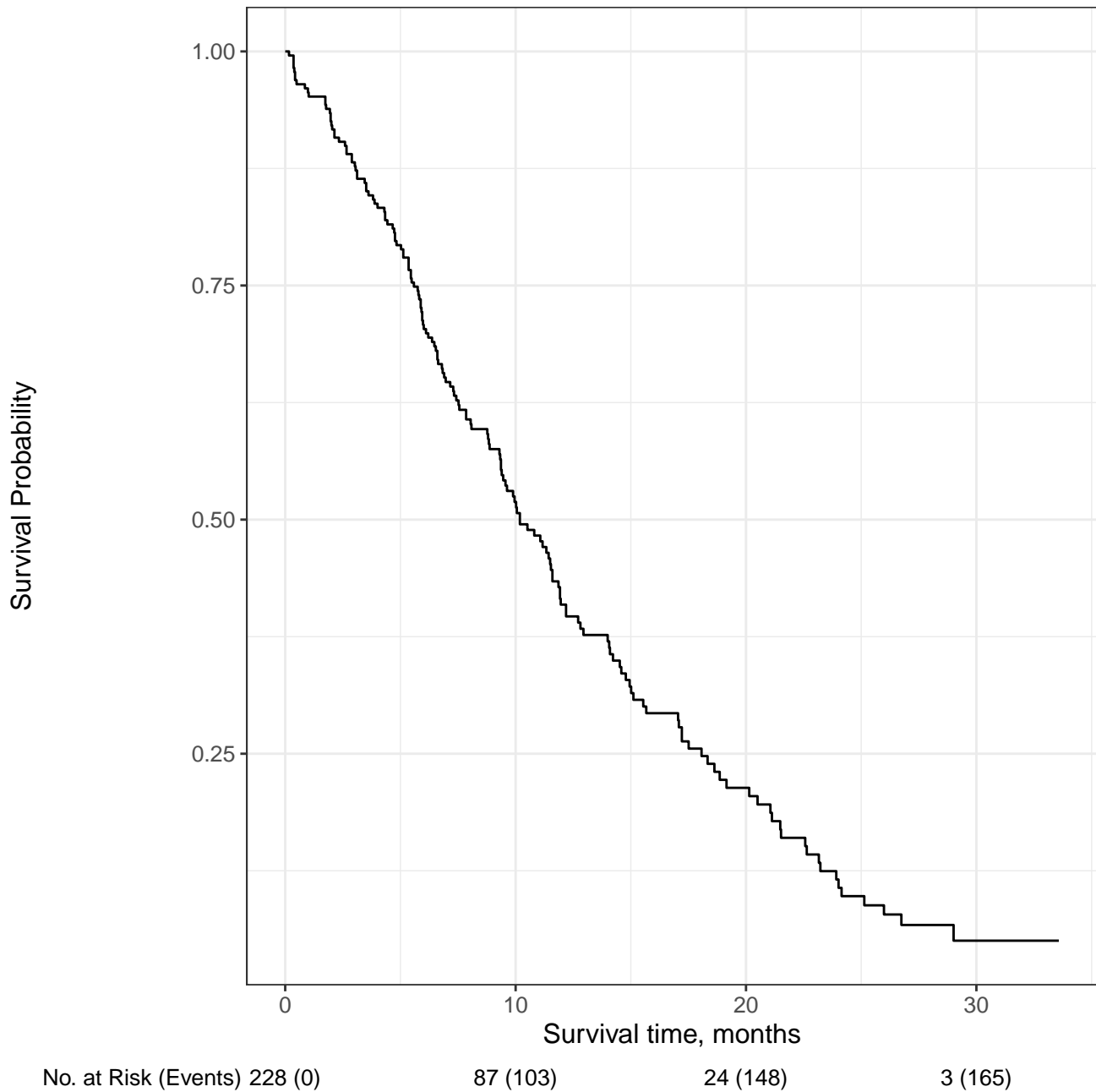
Female, Symptomatic and ambulatory

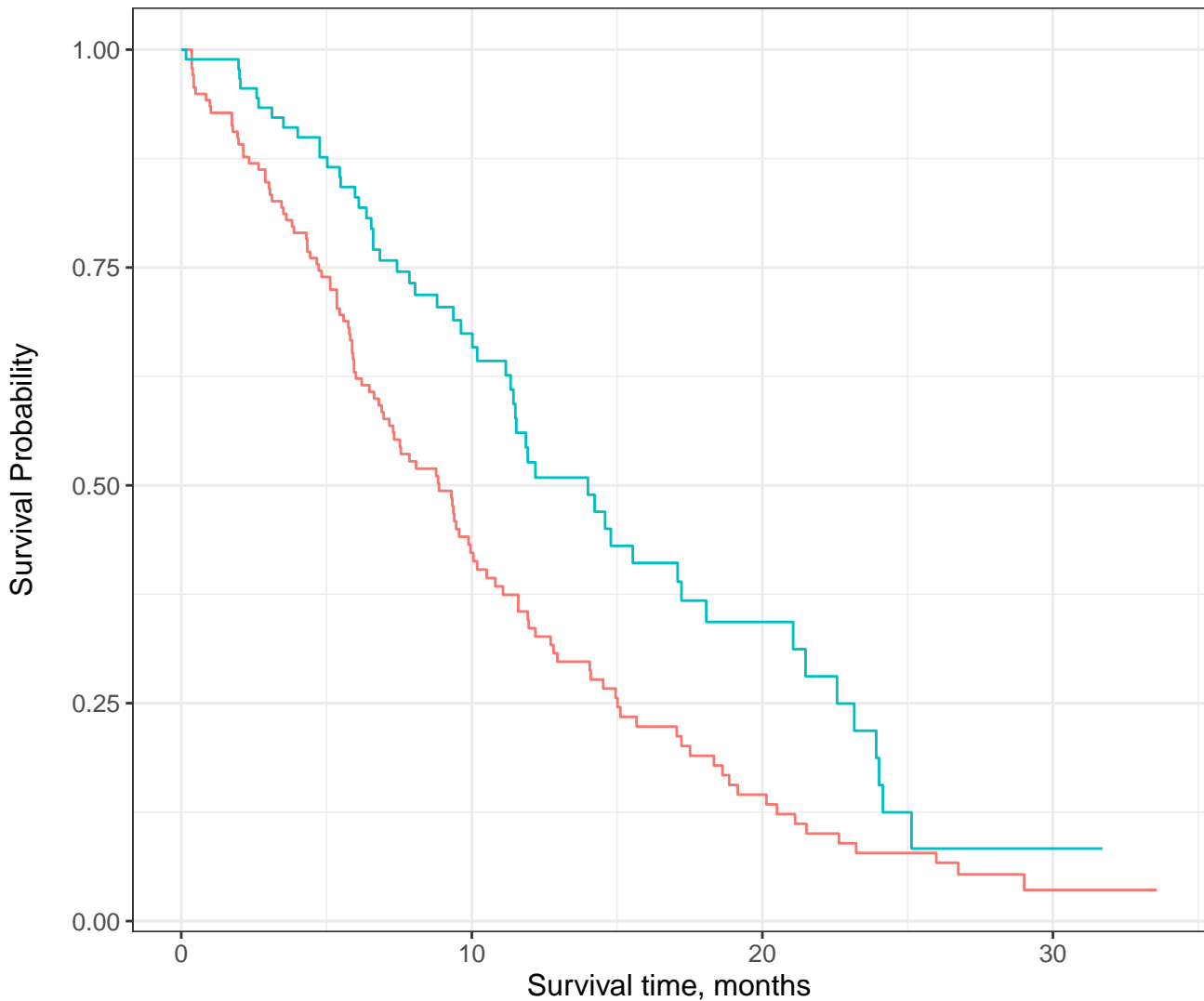
At Risk (Cum. Events)

Male, Asymptomatic	36 (0)	18 (13)	6 (24)	1 (28)
Male, Symptomatic and ambulatory	71 (0)	20 (39)	5 (51)	1 (54)
Male, In bed <50% of the day	29 (0)	6 (22)	2 (26)	0 (28)
Male, In bed > 50% of the day	1 (0)	0 (1)	0 (1)	0 (1)
Female, Asymptomatic	27 (0)	13 (4)	2 (8)	0 (9)
Female, Symptomatic and ambulatory	42 (0)	23 (12)	8 (22)	1 (28)
Female, In bed <50% of the day	21 (0)	7 (11)	1 (15)	0 (16)

Survival (95% CI)

Male, Asymptomatic	100% (100, 100)	62% (47, 81)	23% (12, 45)	6% (1, 32)
Male, Symptomatic and ambulatory	100% (100, 100)	41% (30, 55)	13% (6, 28)	5% (1, 19)
Male, In bed <50% of the day	100% (100, 100)	24% (13, 46)	8% (2, 30)	NA% (NA, NA)
Male, In bed > 50% of the day	100% (100, 100)	NA% (NA, NA)	NA% (NA, NA)	NA% (NA, NA)
Female, Asymptomatic	100% (100, 100)	85% (73, 100)	52% (30, 88)	NA% (NA, NA)
Female, Symptomatic and ambulatory	100% (100, 100)	69% (56, 86)	34% (21, 57)	6% (1, 36)
Female, In bed <50% of the day	100% (100, 100)	41% (24, 71)	18% (6, 49)	NA% (NA, NA)



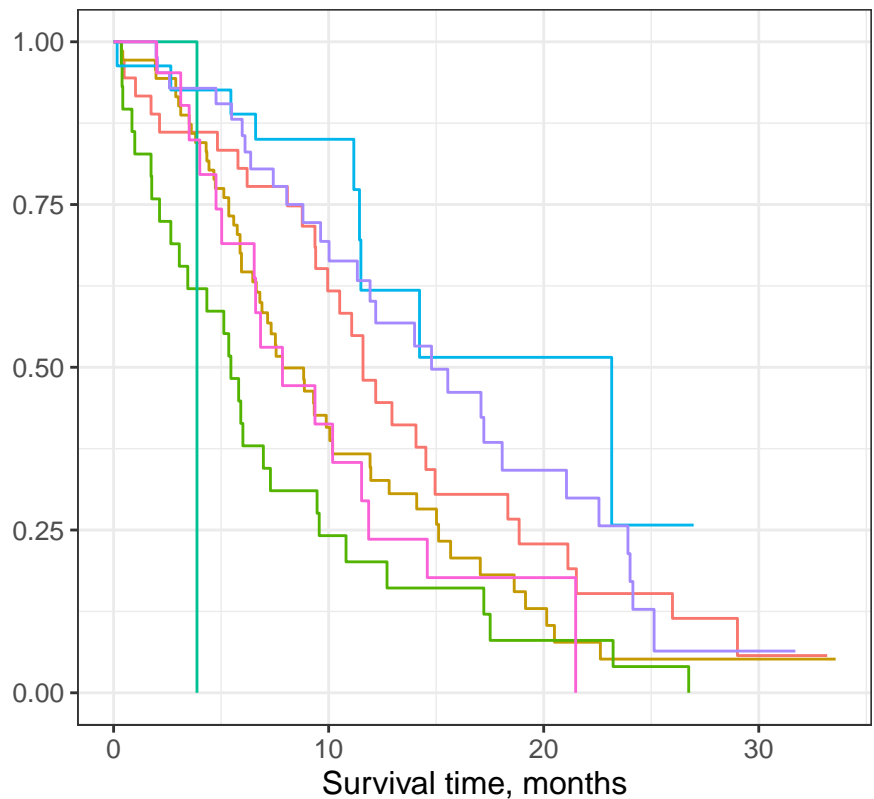


— Male — Female

No. at Risk (Events)

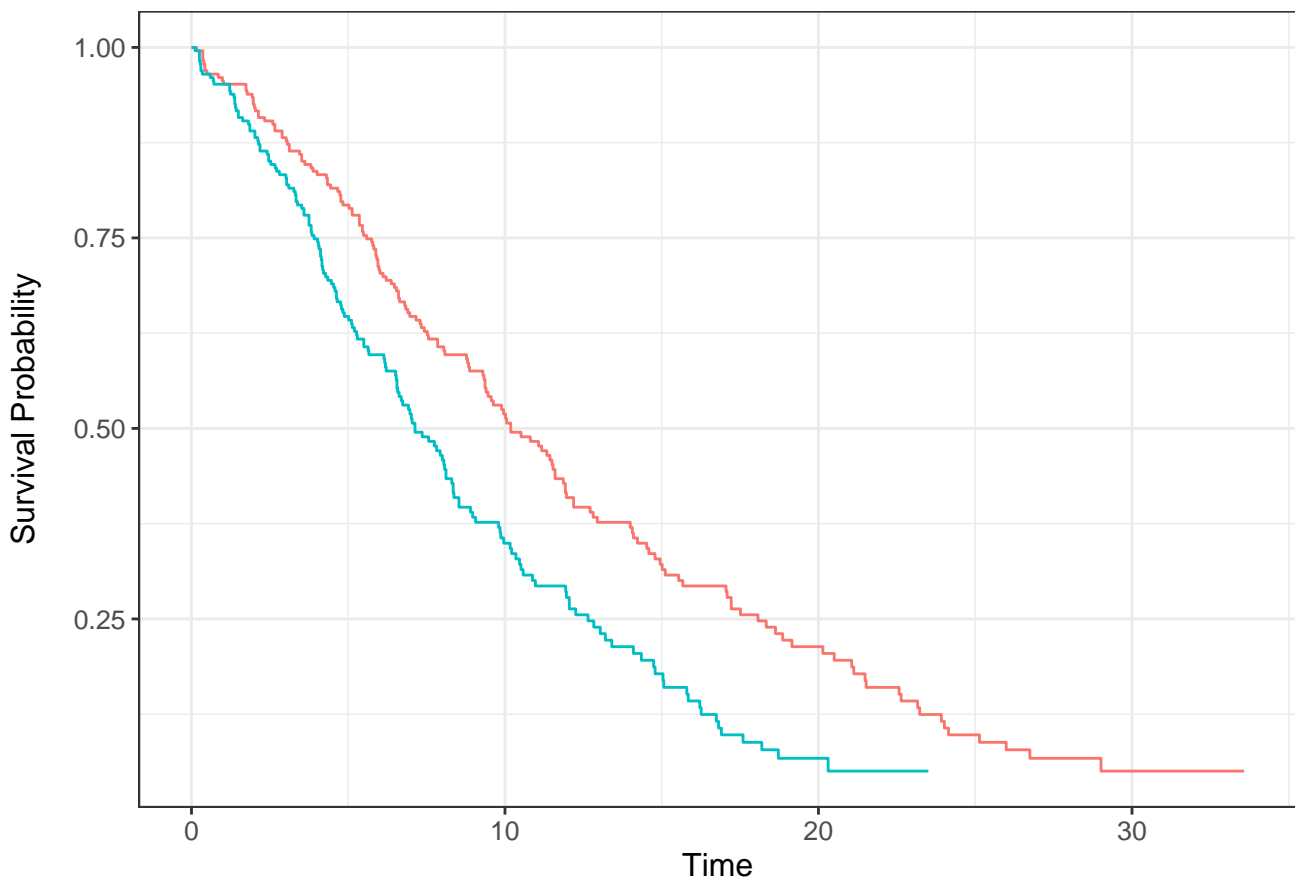
Male	138 (0)	44 (76)	13 (103)	2 (112)
Female	90 (0)	43 (27)	11 (45)	1 (53)

Survival Probability



Male, Asymptomatic Male, In bed <50% of the day Female, Asymptomatic
Male, Symptomatic and ambulatory Male, In bed > 50% of the day Female, Symptomatic and ambulatory

No. at Risk (Events)				
Male, Asymptomatic	36 (0)	18 (13)	6 (24)	1 (28)
Male, Symptomatic and ambulatory	71 (0)	20 (39)	5 (51)	1 (54)
Male, In bed <50% of the day	29 (0)	6 (22)	2 (26)	0 (28)
Male, In bed > 50% of the day	1 (0)	0 (1)	0 (1)	0 (1)
Female, Asymptomatic	27 (0)	13 (4)	2 (8)	0 (9)
Female, Symptomatic and ambulatory	42 (0)	23 (12)	8 (22)	1 (28)
Female, In bed <50% of the day	21 (0)	7 (11)	1 (15)	0 (16)

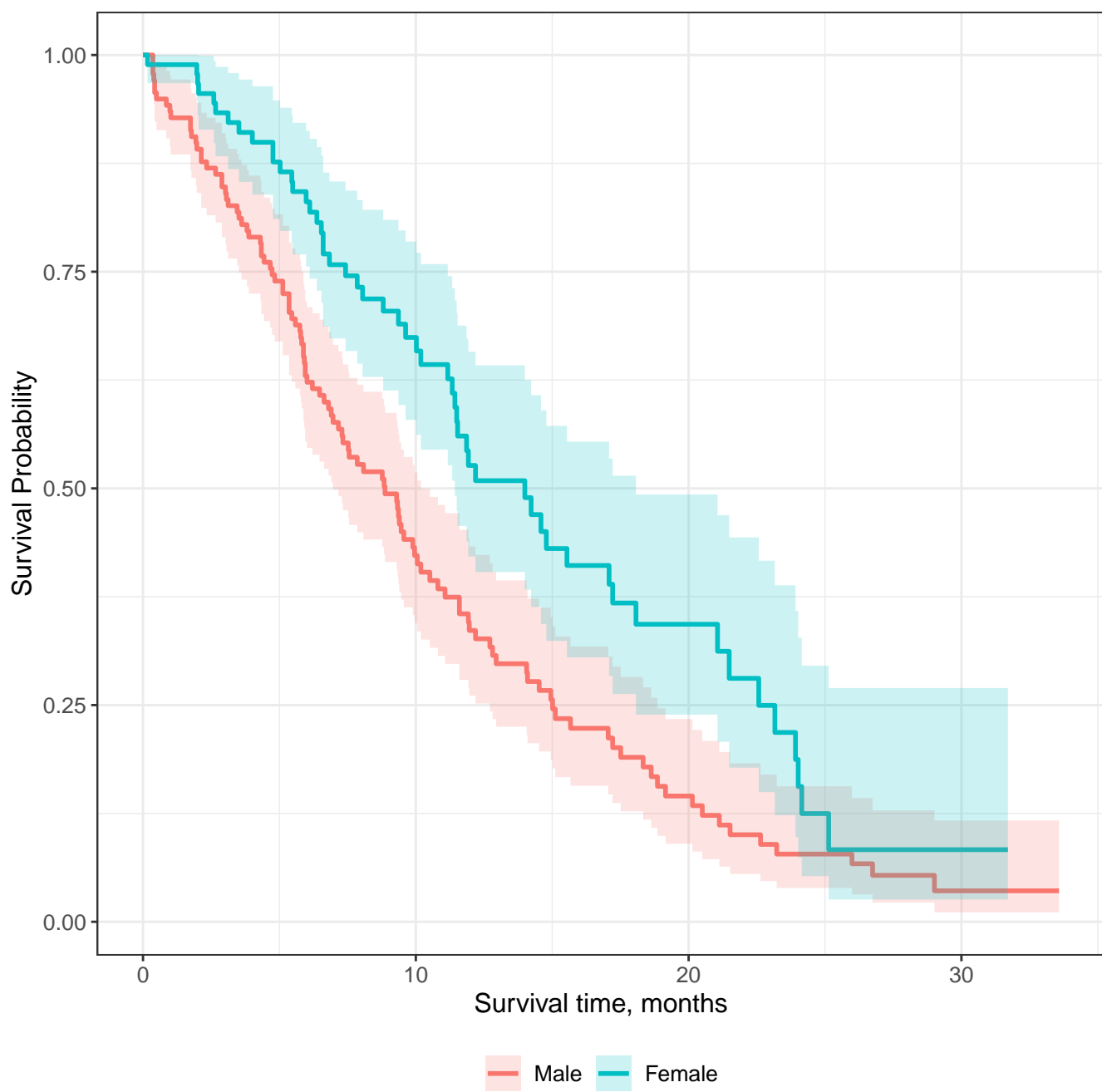


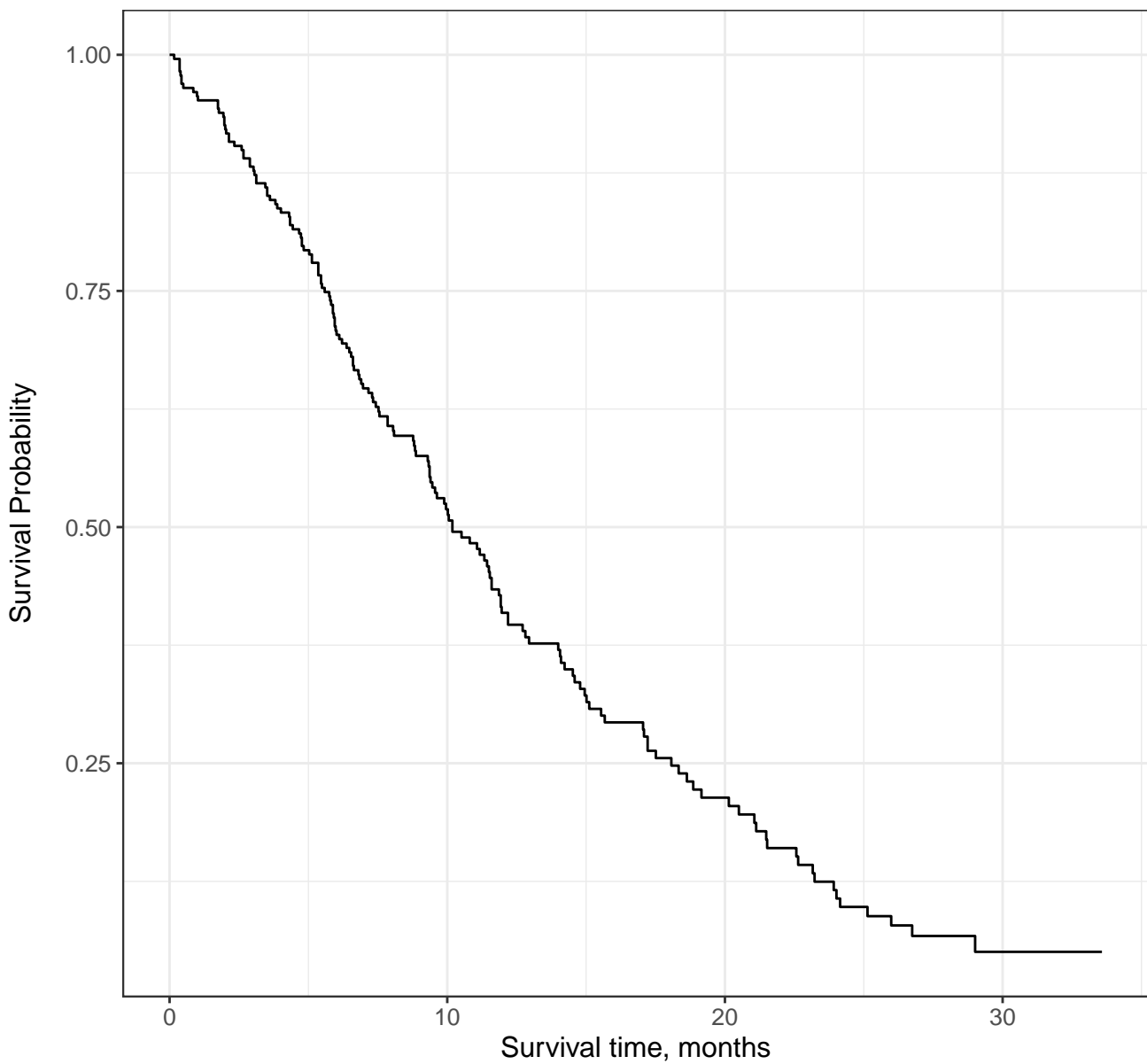
Overall Survival

At Risk	228	87	24	3
Events	0	103	148	165

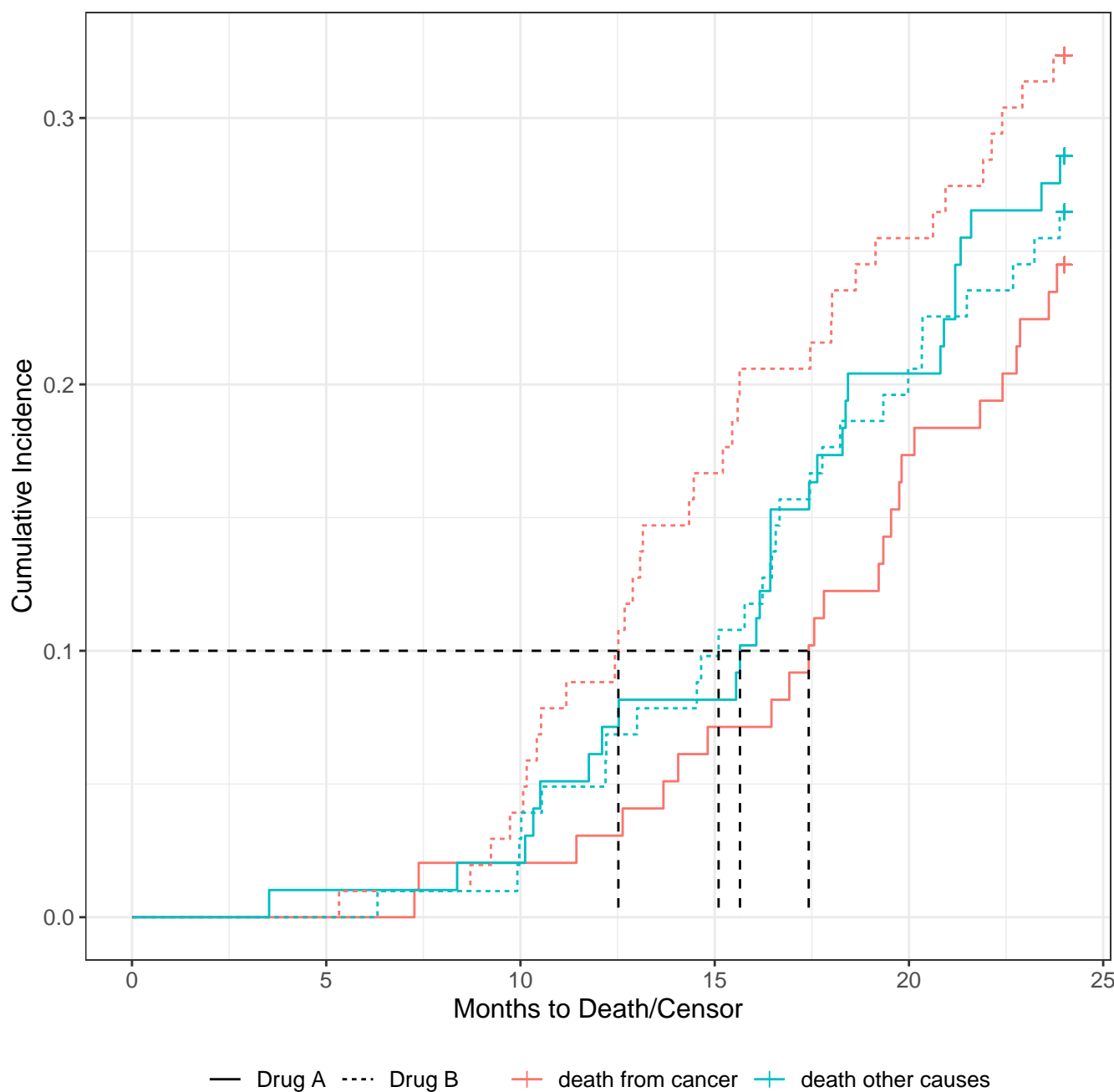
Progression-Free Survival

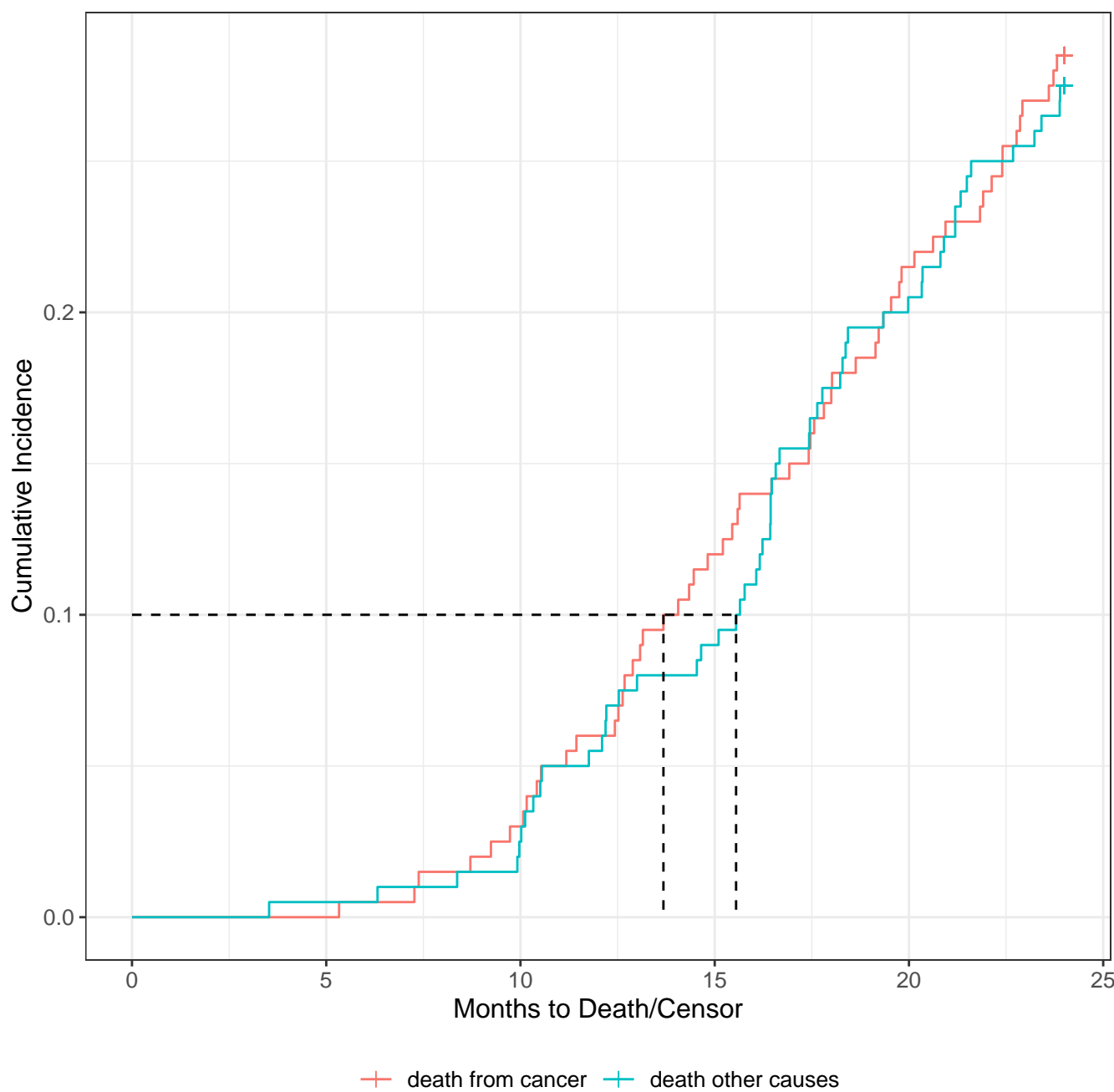
At Risk	228	51	4	0
Events	0	130	164	165

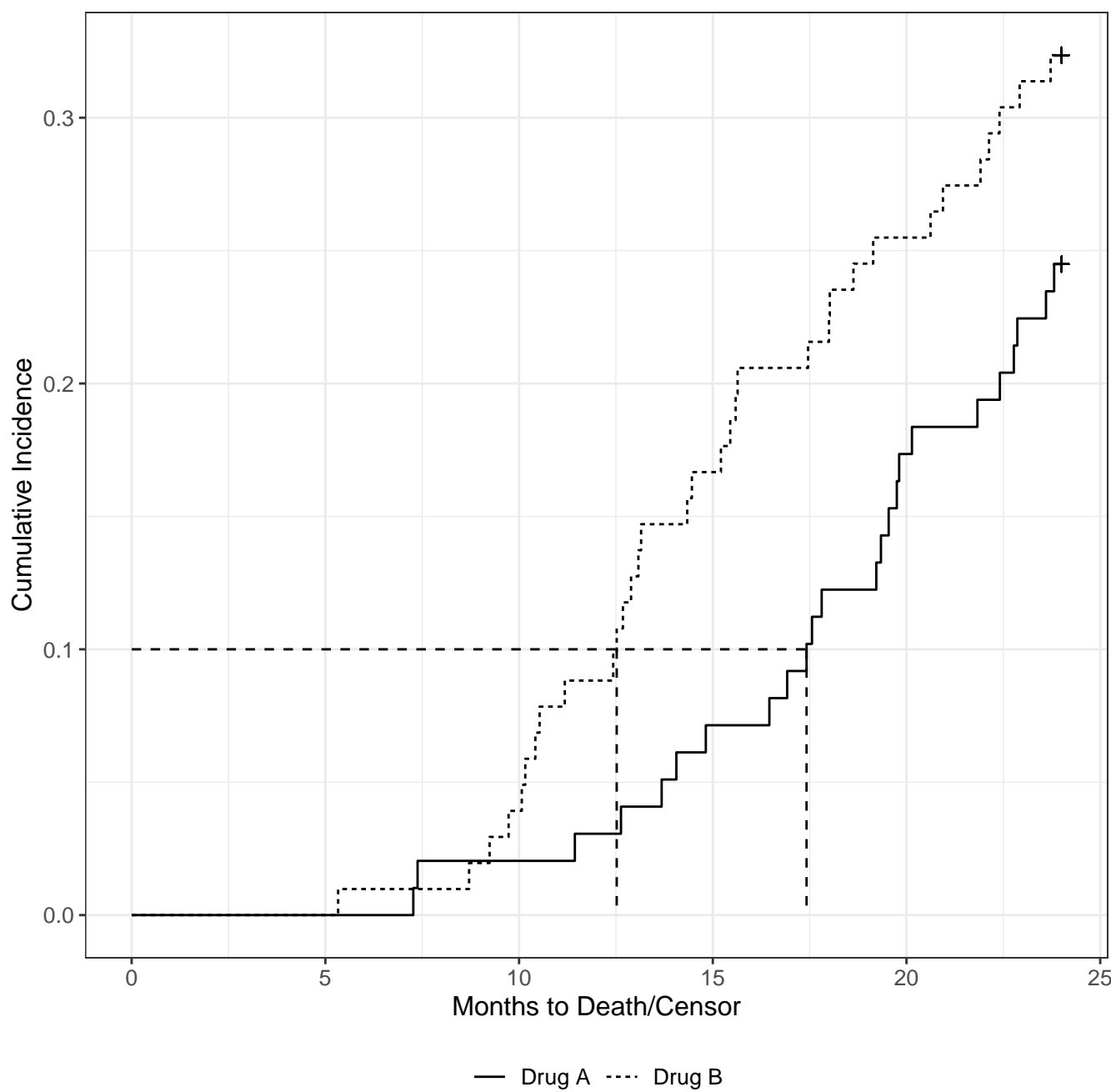


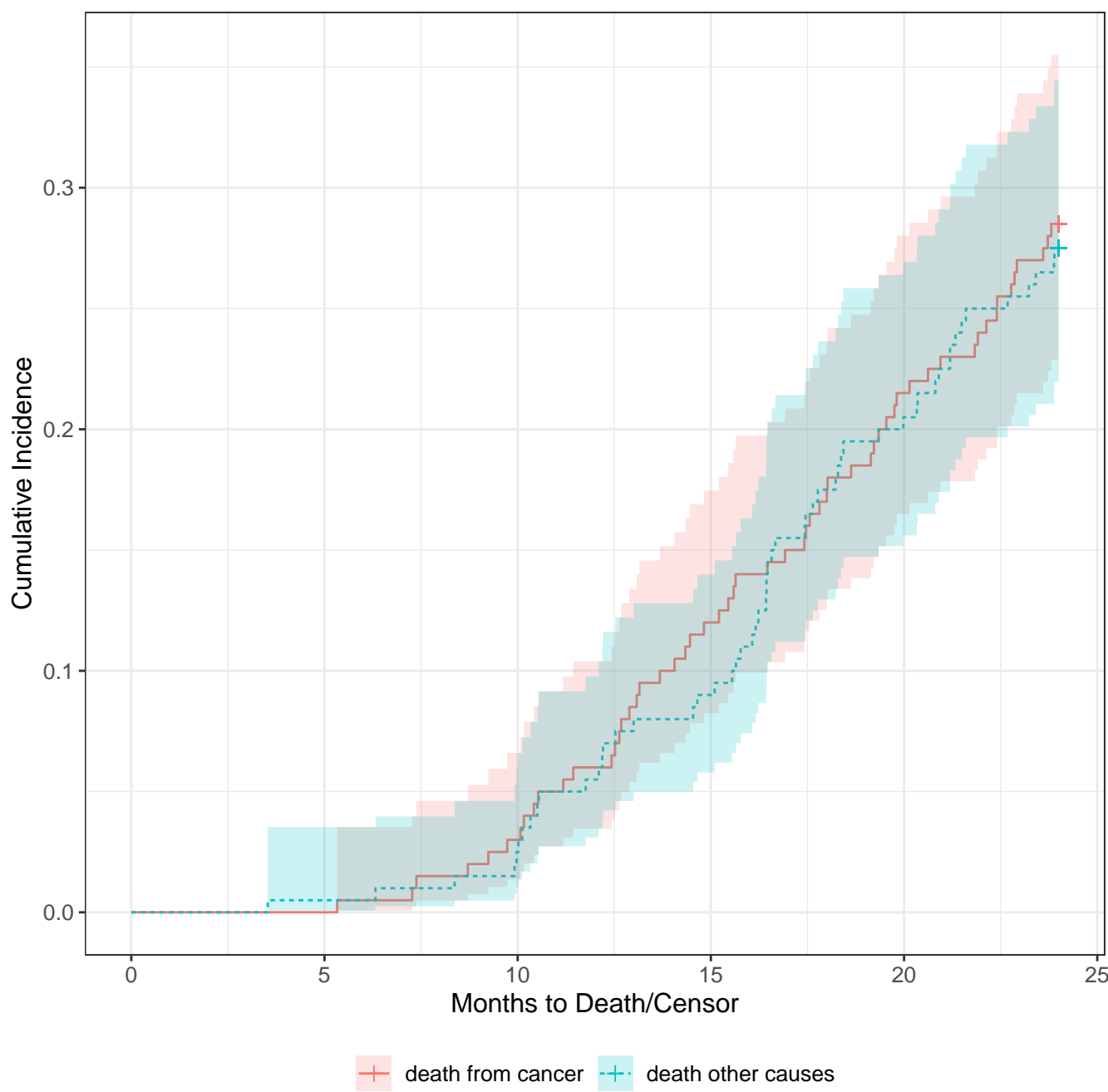


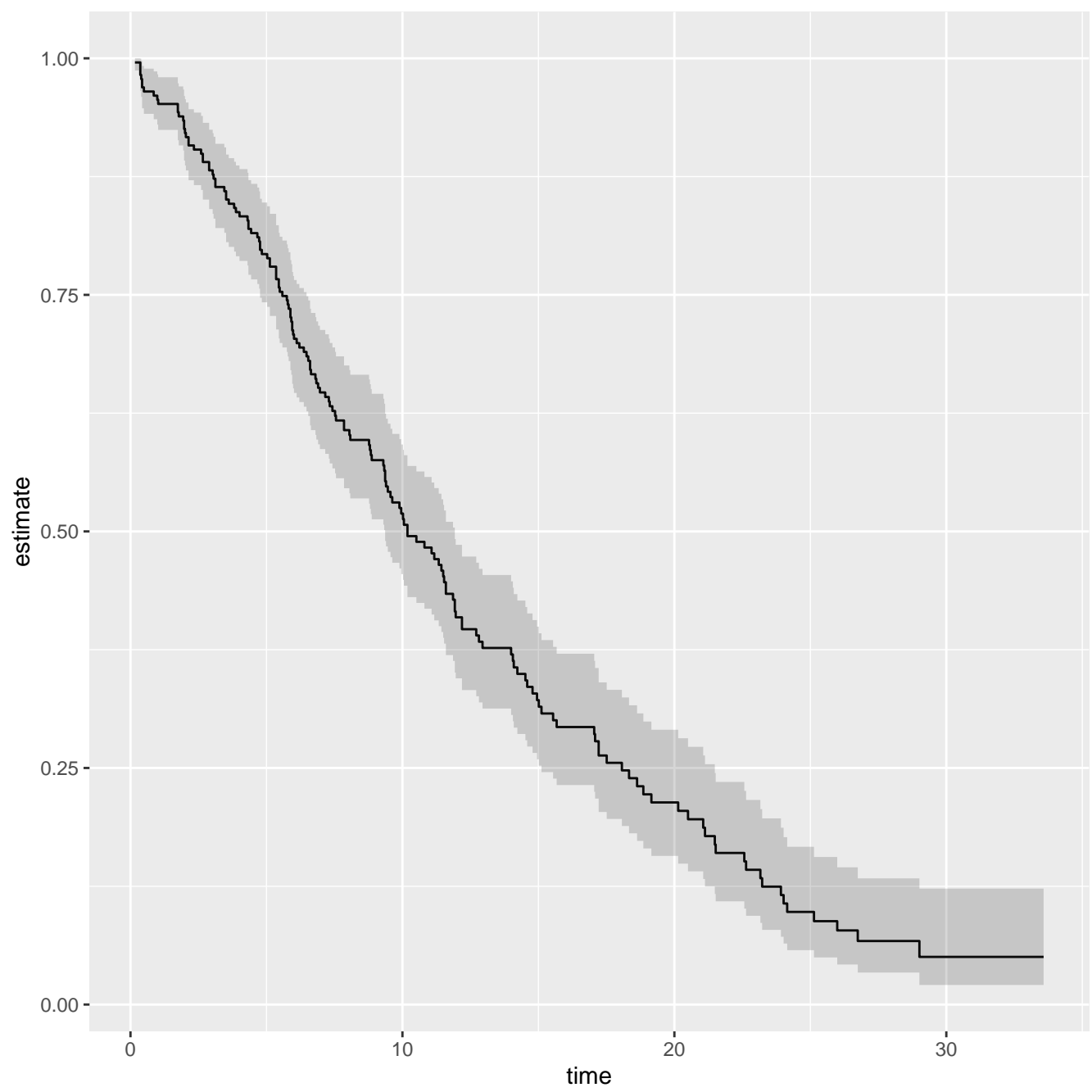
At Risk	228	87	24	3
Events	0	103	148	165

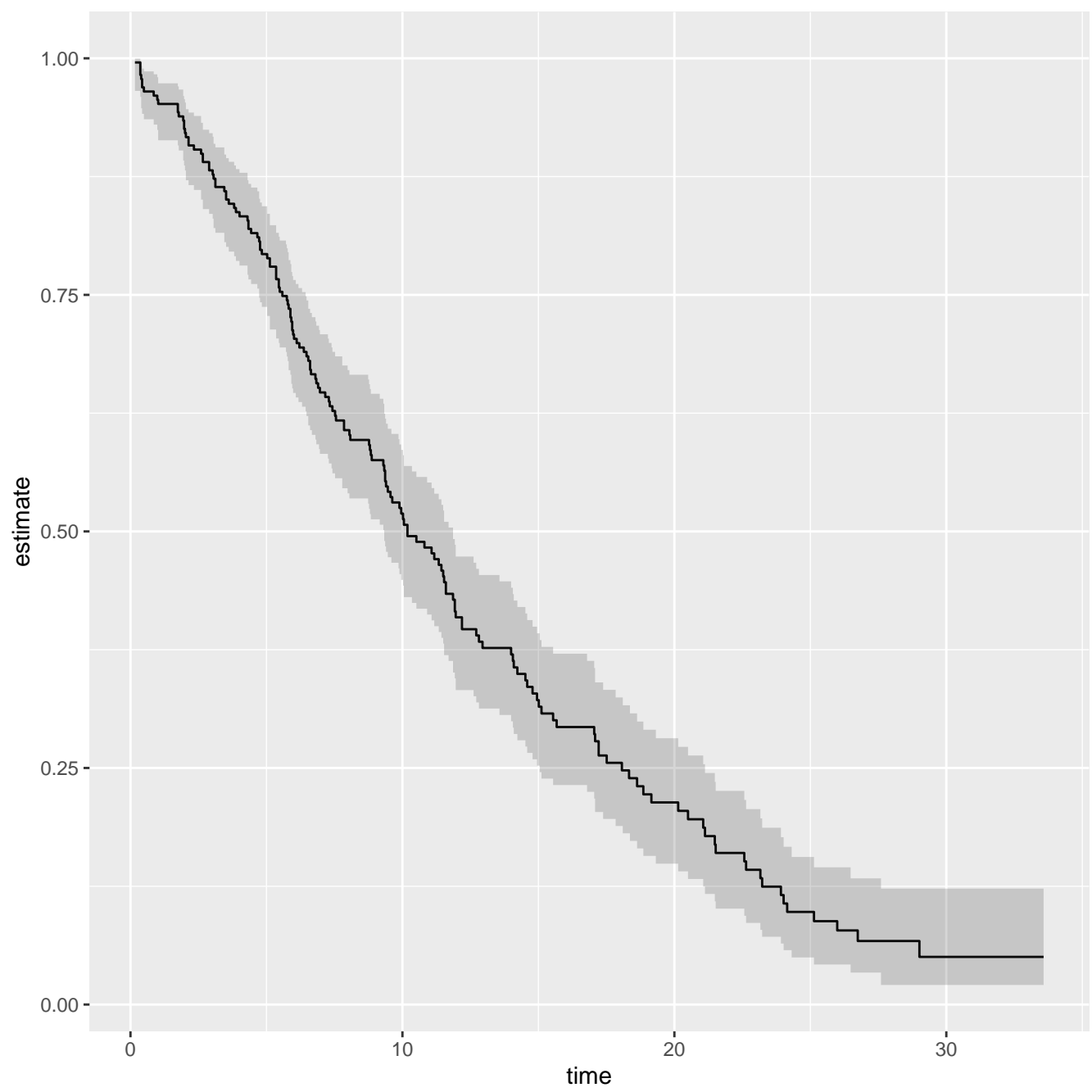


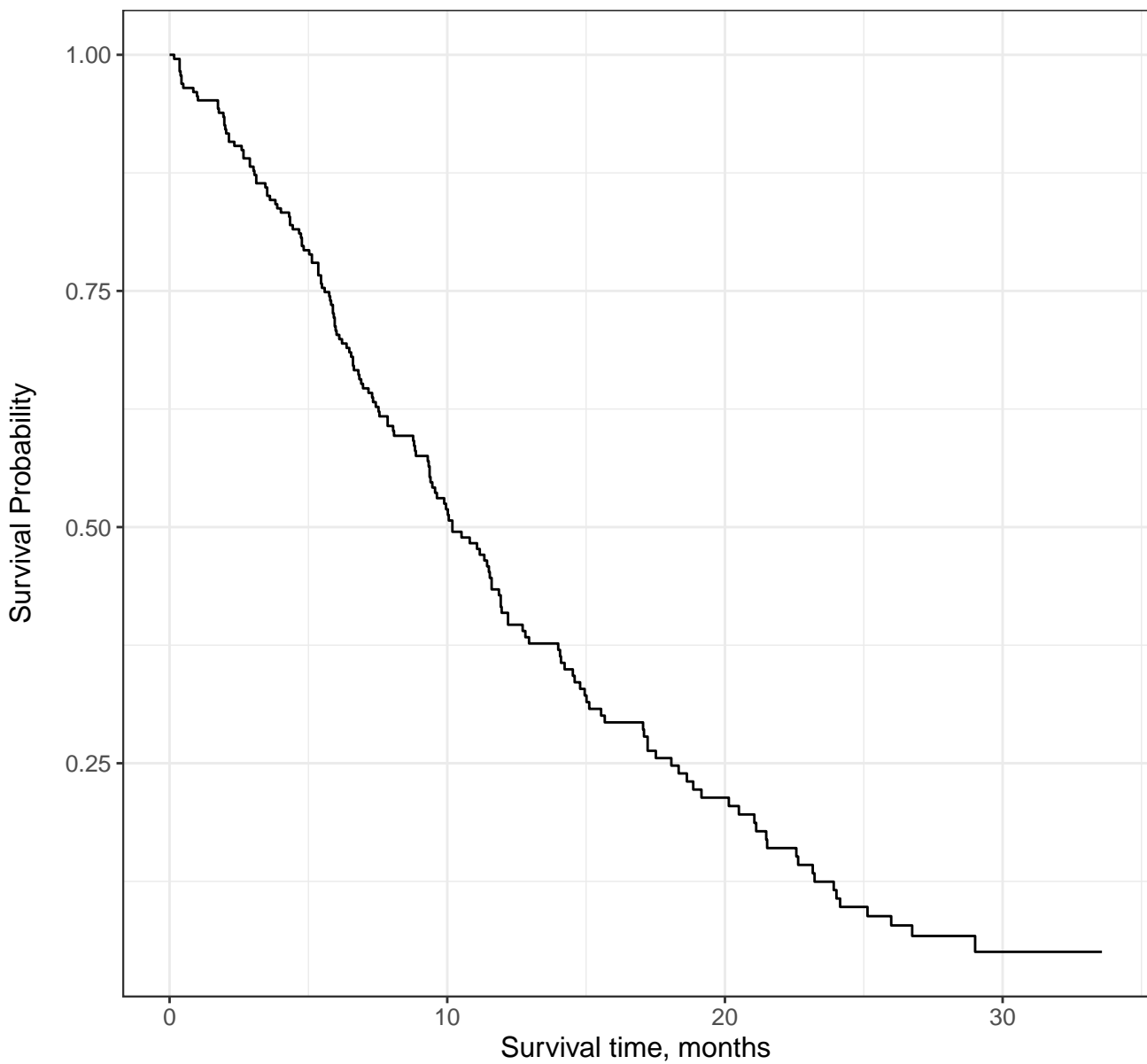




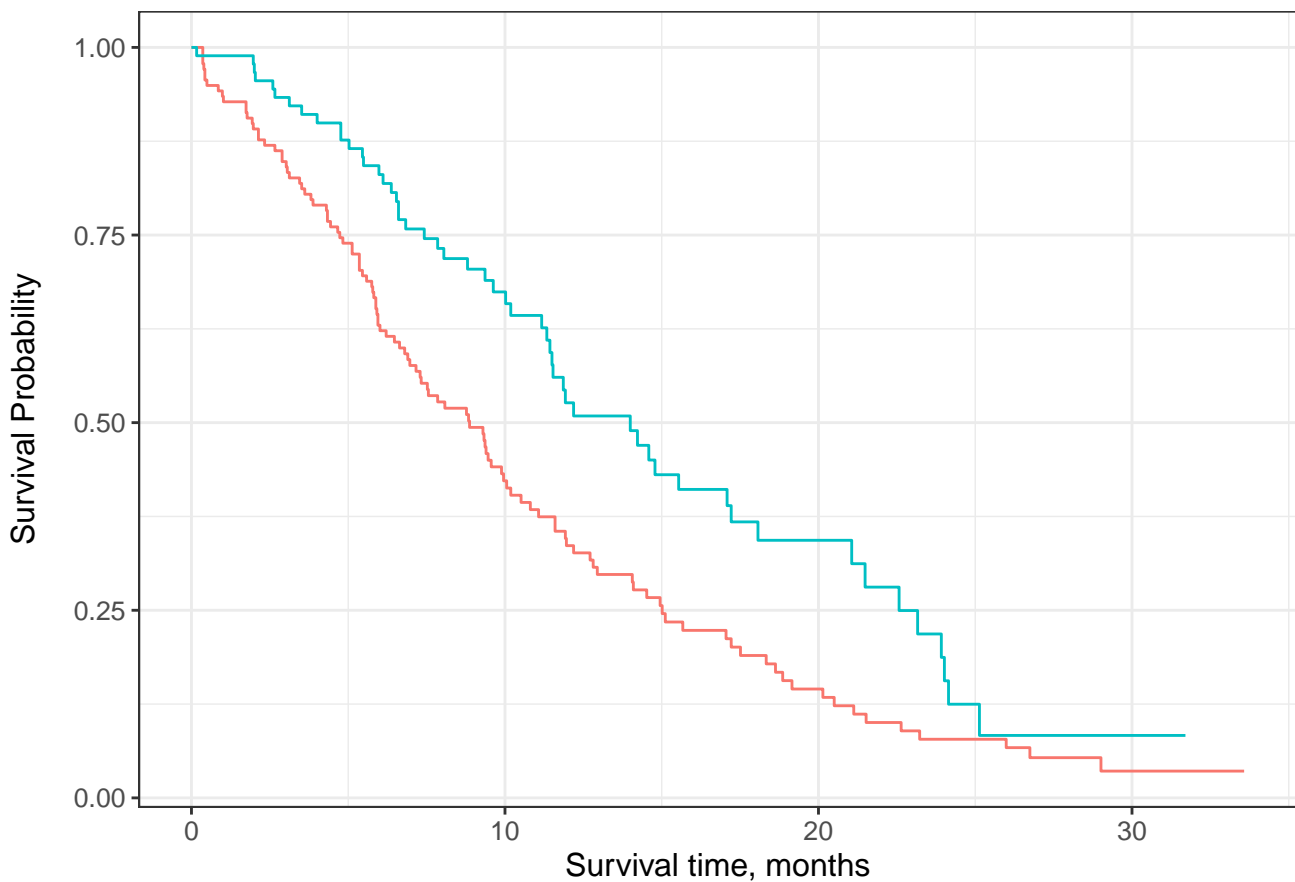








At Risk	228	87	24	3
Events	0	103	148	165



Male Female

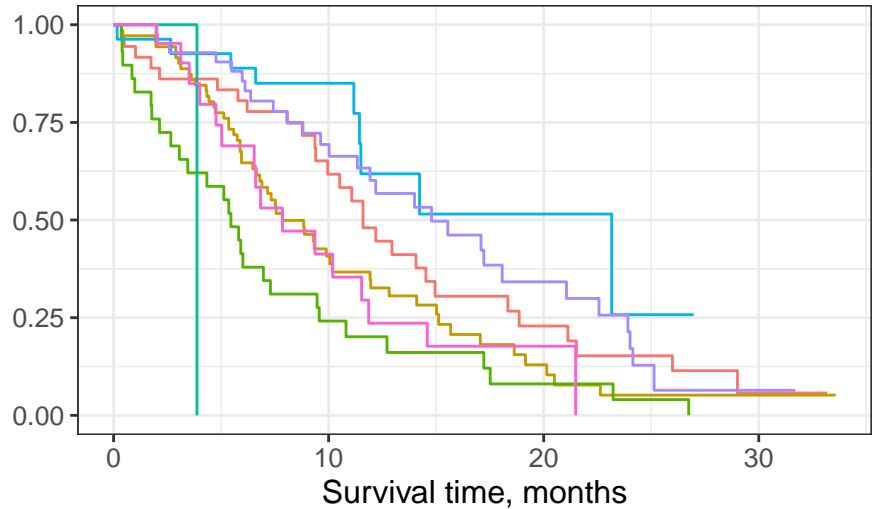
Male

At Risk	138	44	13	2
Events	0	76	103	112

Female

At Risk	90	43	11	1
Events	0	27	45	53

Survival Probability



Male, Asymptomatic

Male, In bed <50% of the day

Female, Asymptomatic

Male, Symptomatic and ambulatory

Male, In bed > 50% of the day

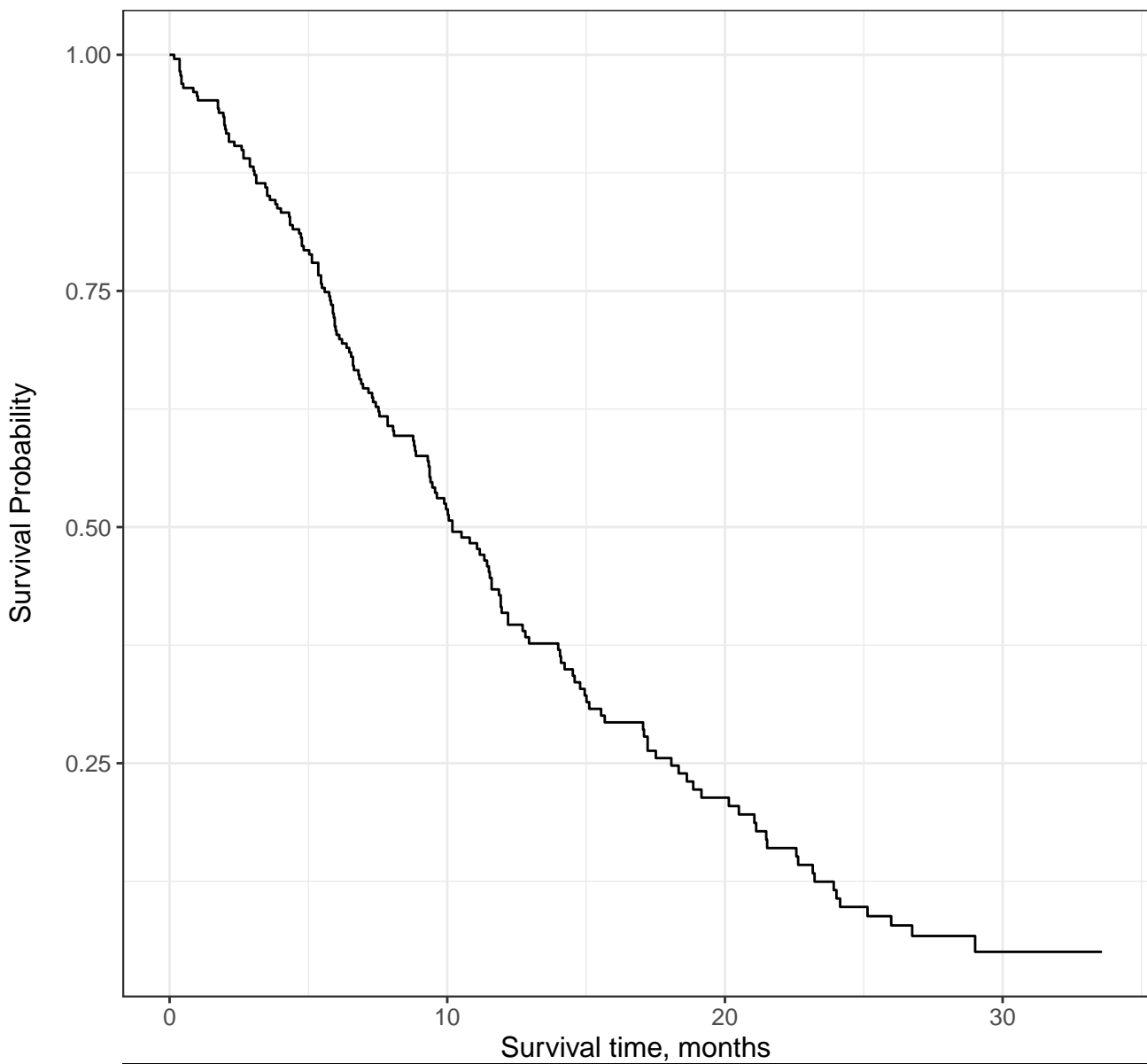
Female, Symptomatic and ambulatory

At Risk

Male, Asymptomatic	36	18	6	1
Male, Symptomatic and ambulatory	71	20	5	1
Male, In bed <50% of the day	29	6	2	0
Male, In bed > 50% of the day	1	0	0	0
Female, Asymptomatic	27	13	2	0
Female, Symptomatic and ambulatory	42	23	8	1
Female, In bed <50% of the day	21	7	1	0

Events

Male, Asymptomatic	0	13	24	28
Male, Symptomatic and ambulatory	0	39	51	54
Male, In bed <50% of the day	0	22	26	28
Male, In bed > 50% of the day	0	1	1	1
Female, Asymptomatic	0	4	8	9
Female, Symptomatic and ambulatory	0	12	22	28
Female, In bed <50% of the day	0	11	15	16



At Risk

228

87

24

3

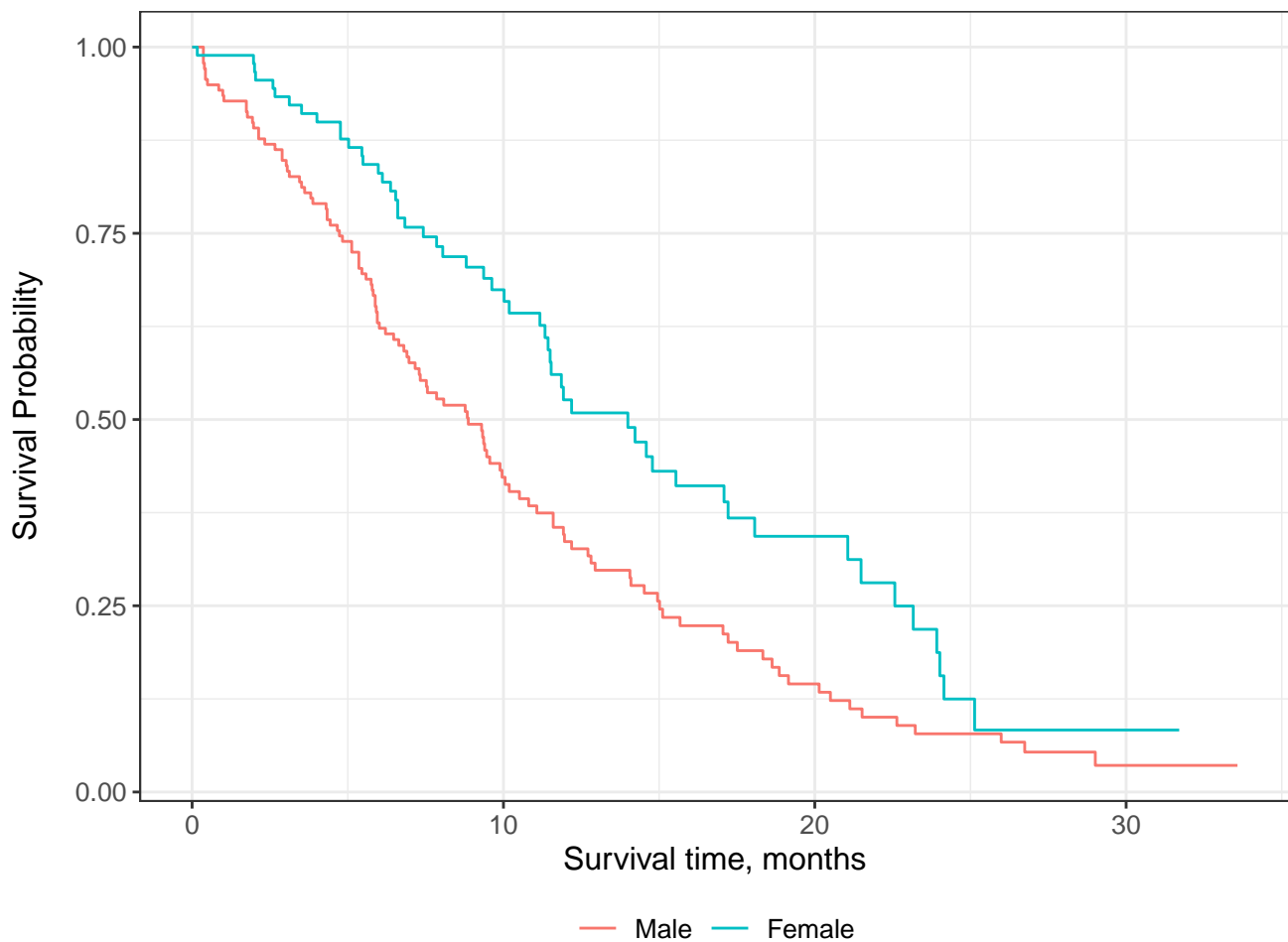
Events

0

103

148

165



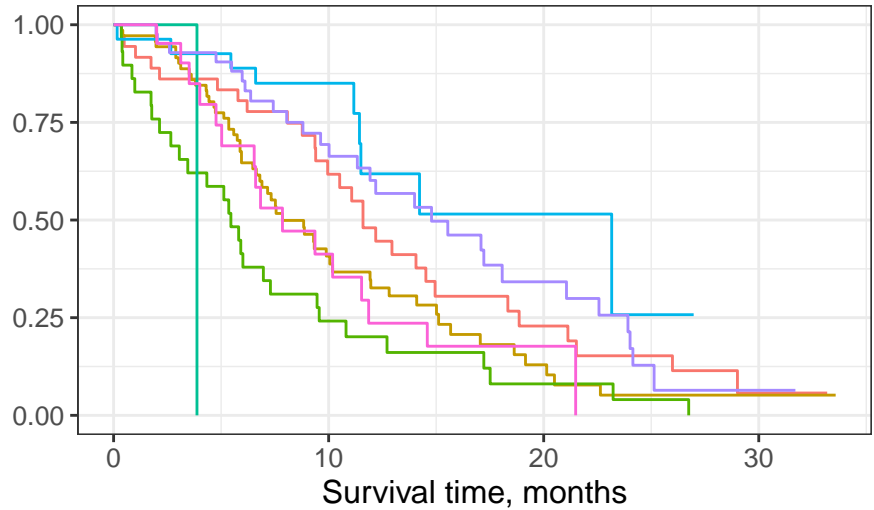
Male

At Risk	138	44	13	2
Events	0	76	103	112

Female

At Risk	90	43	11	1
Events	0	27	45	53

Survival Probability



Male, Asymptomatic

Male, In bed <50% of the day

Female, Asymptomatic

Male, Symptomatic and ambulatory

Male, In bed > 50% of the day

Female, Symptomatic and ambulatory

At Risk

Male, Asymptomatic	36	18	6	1
Male, Symptomatic and ambulatory	71	20	5	1
Male, In bed <50% of the day	29	6	2	0
Male, In bed > 50% of the day	1	0	0	0
Female, Asymptomatic	27	13	2	0
Female, Symptomatic and ambulatory	42	23	8	1
Female, In bed <50% of the day	21	7	1	0

Events

Male, Asymptomatic	0	13	24	28
Male, Symptomatic and ambulatory	0	39	51	54
Male, In bed <50% of the day	0	22	26	28
Male, In bed > 50% of the day	0	1	1	1
Female, Asymptomatic	0	4	8	9
Female, Symptomatic and ambulatory	0	12	22	28
Female, In bed <50% of the day	0	11	15	16