

Asymptomatic and ambulatory

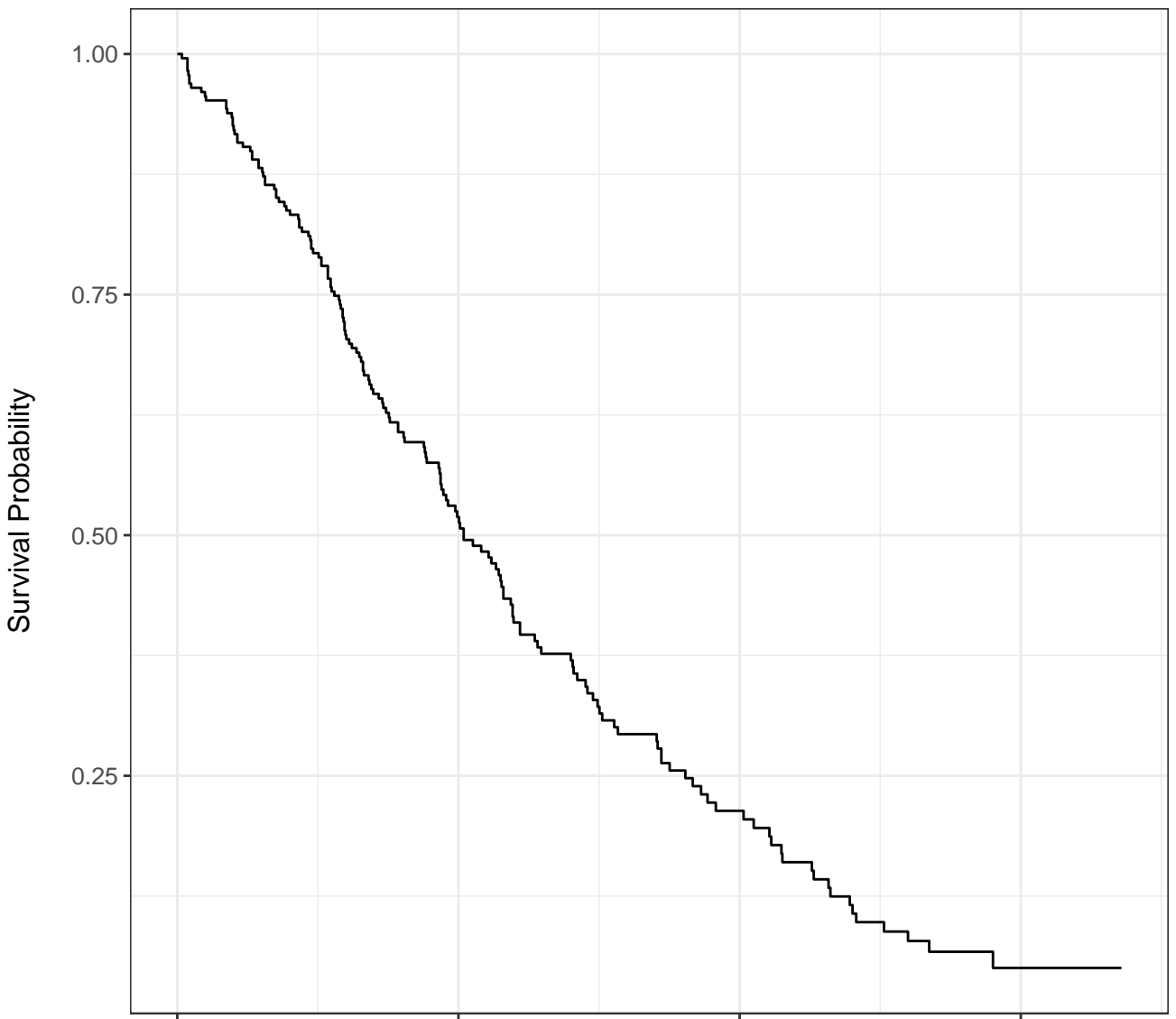
Male, In bed <50% of the day

Male, In bed > 50% of the day

Female, Asymptomatic

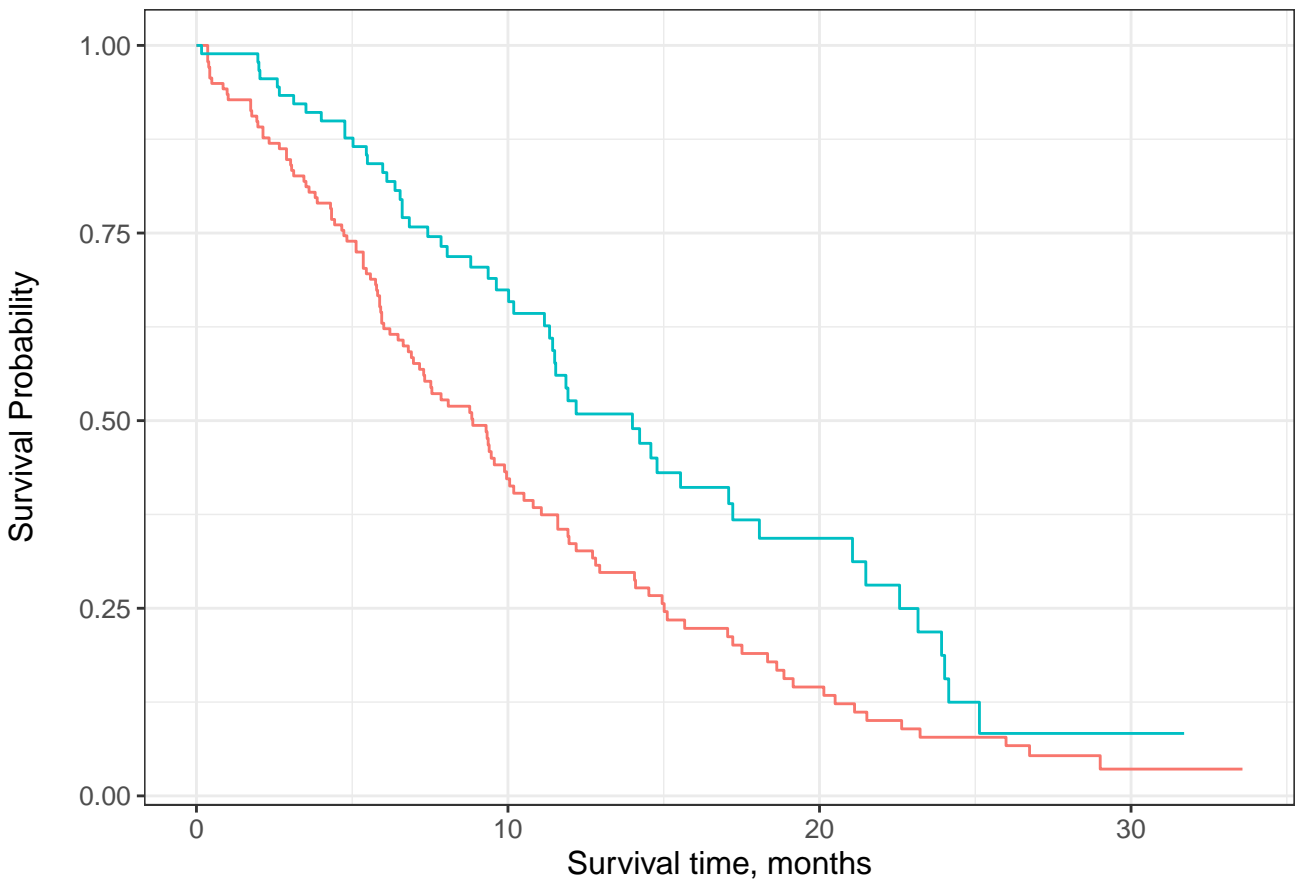
Female, Symptomatic and ambulatory

Female, Symptomatic



Survival time, months

At Risk	228	87	24	3
Events	0	103	148	165



— Male — Female

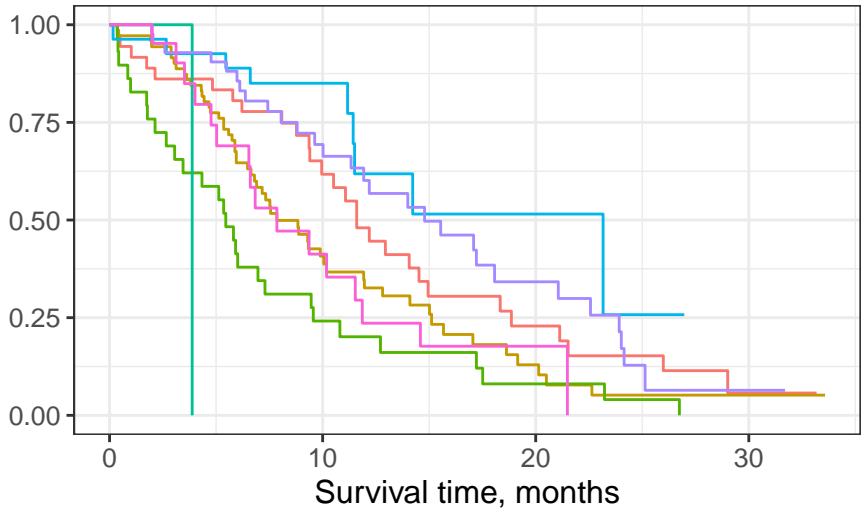
Male

At Risk	138	44	13	2
Events	0	76	103	112

Female

At Risk	90	43	11	1
Events	0	27	45	53

Survival Probability



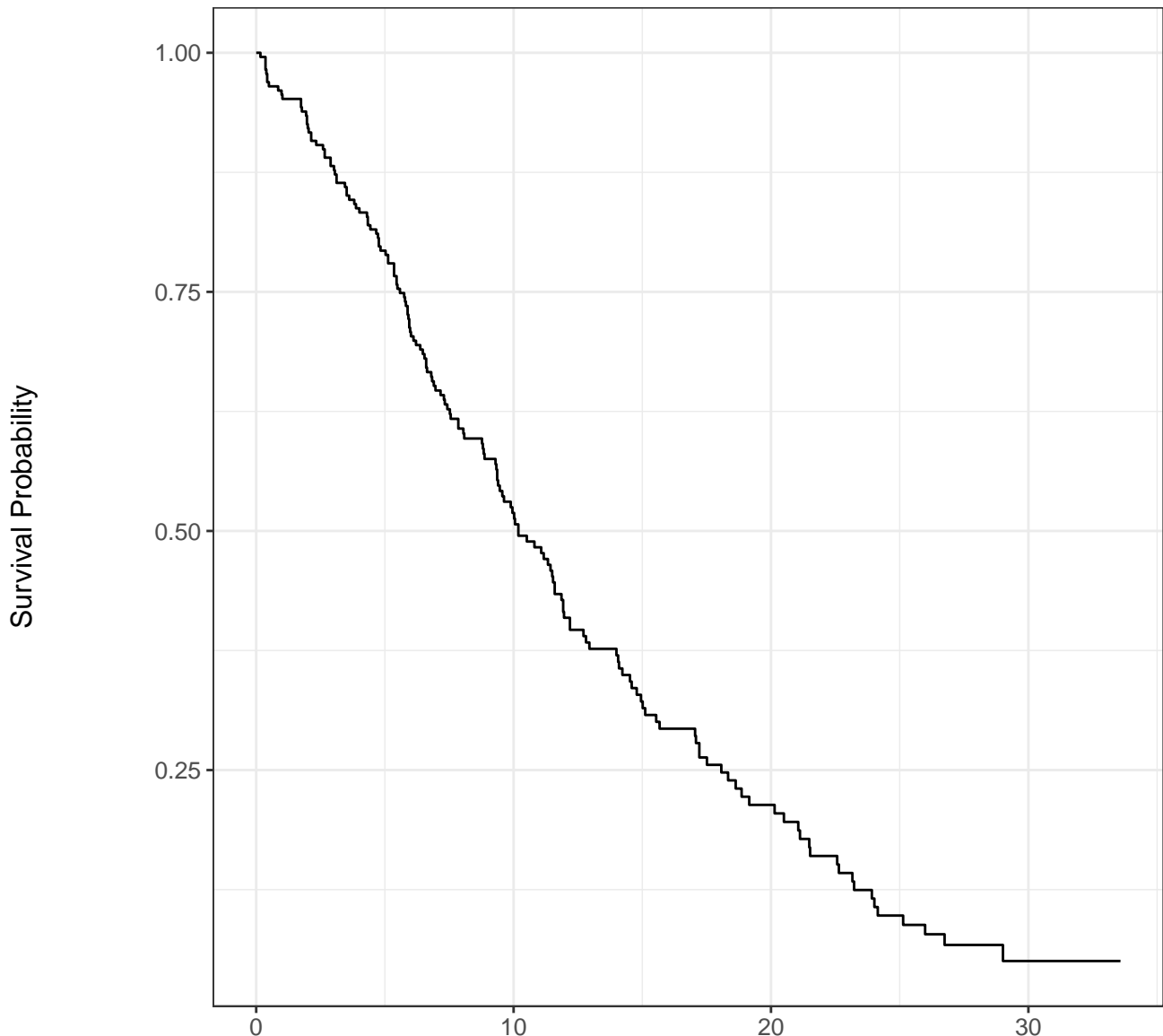
Male, Asymptomatic Male, In bed <50% of the day Female, Asymptomatic
 Male, Symptomatic and ambulatory Male, In bed >50% of the day Female, Symptomatic and ambulatory

At Risk

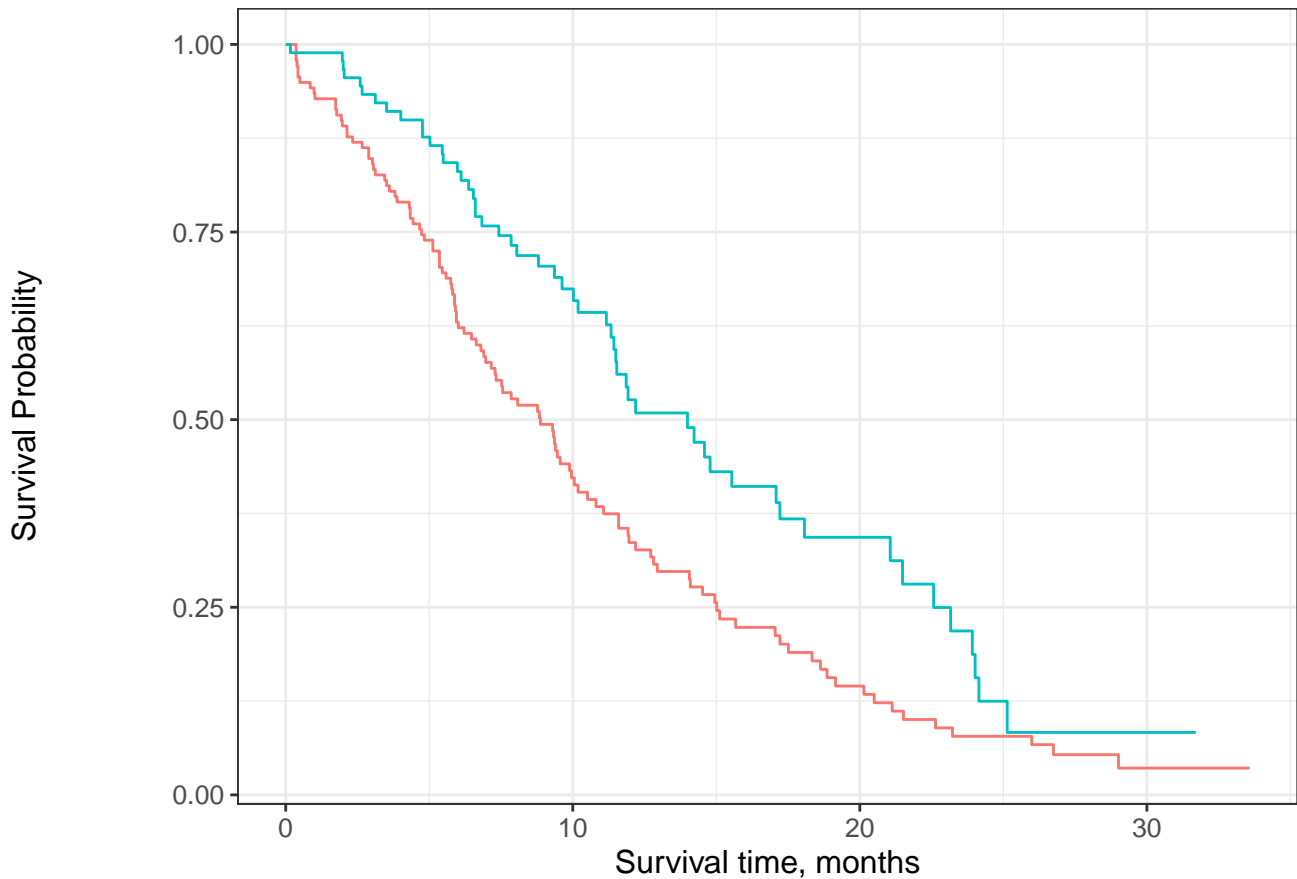
Male, Asymptomatic	36	18	6	1
Male, Symptomatic and ambulatory	71	20	5	1
Male, In bed <50% of the day	29	6	2	0
Male, In bed >50% of the day	1	0	0	0
Female, Asymptomatic	27	13	2	0
Female, Symptomatic and ambulatory	42	23	8	1
Female, In bed <50% of the day	21	7	1	0

Events

Male, Asymptomatic	0	13	24	28
Male, Symptomatic and ambulatory	0	39	51	54
Male, In bed <50% of the day	0	22	26	28
Male, In bed >50% of the day	0	1	1	1
Female, Asymptomatic	0	4	8	9
Female, Symptomatic and ambulatory	0	12	22	28
Female, In bed <50% of the day	0	11	15	16



	0	10	20	30
At Risk	228	87	24	3
CUM EVENTS	0	103	148	165



— Male — Female

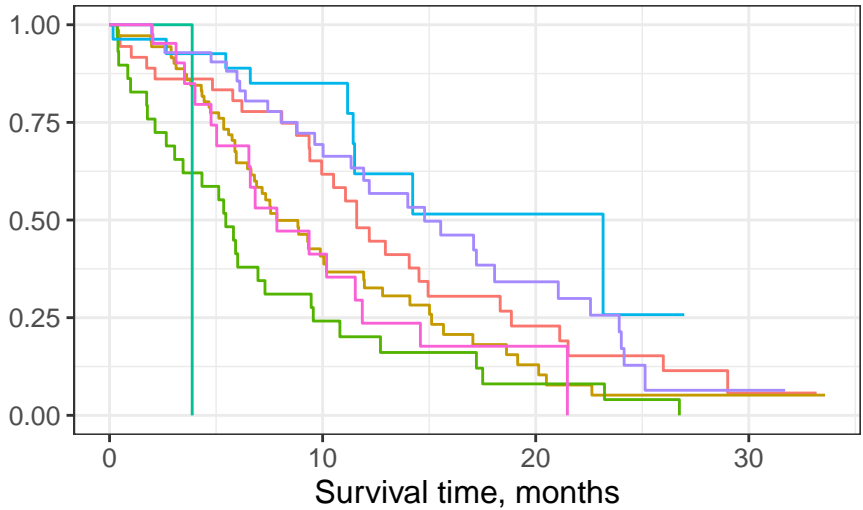
Male

At Risk	138	44	13	2
CUM EVENTS	0	76	103	112

Female

At Risk	90	43	11	1
CUM EVENTS	0	27	45	53

Survival Probability



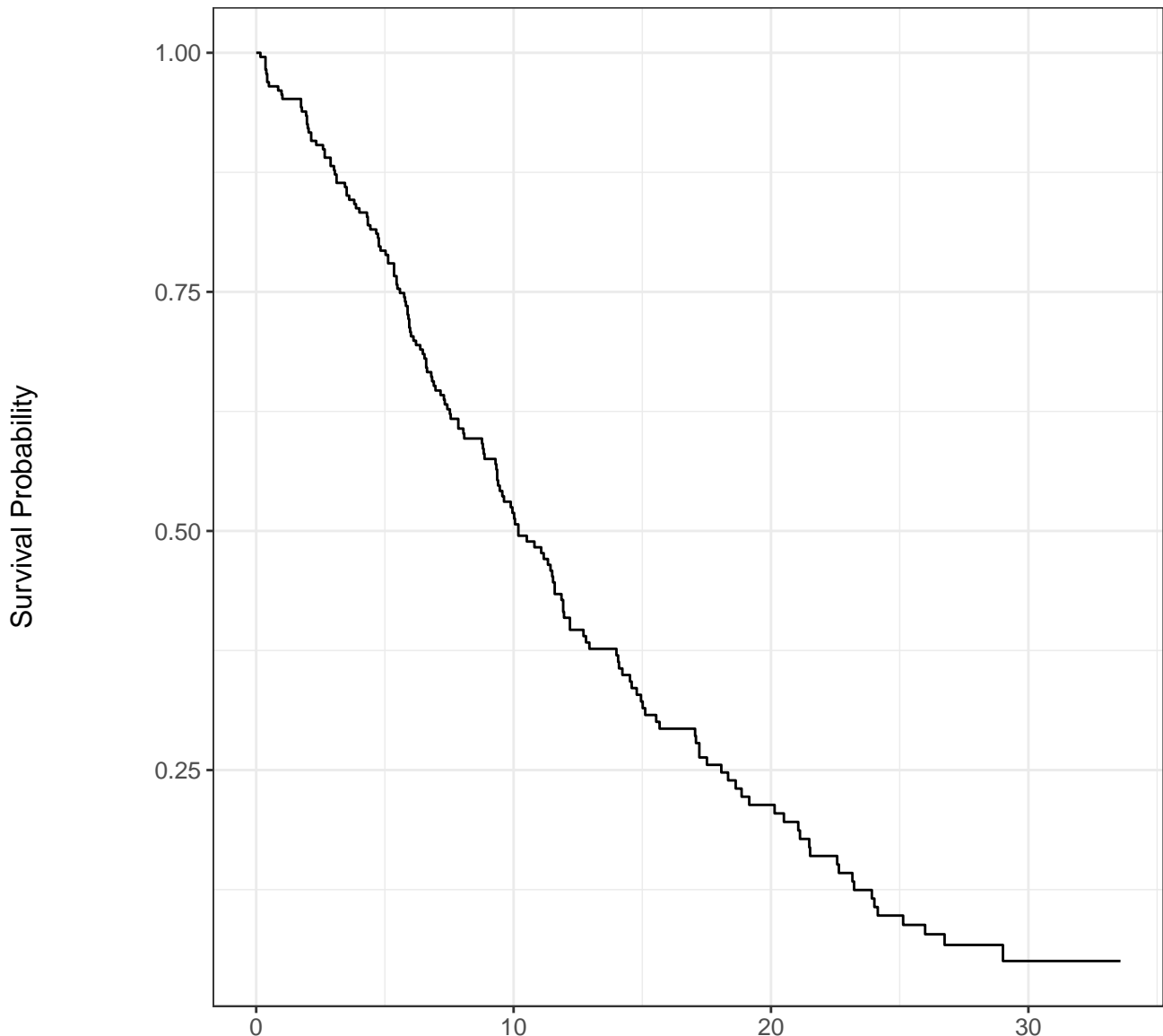
Male, Asymptomatic Male, In bed <50% of the day Female, Asymptomatic
 Male, Symptomatic and ambulatory Male, In bed > 50% of the day Female, Symptomatic and ambulatory

At Risk

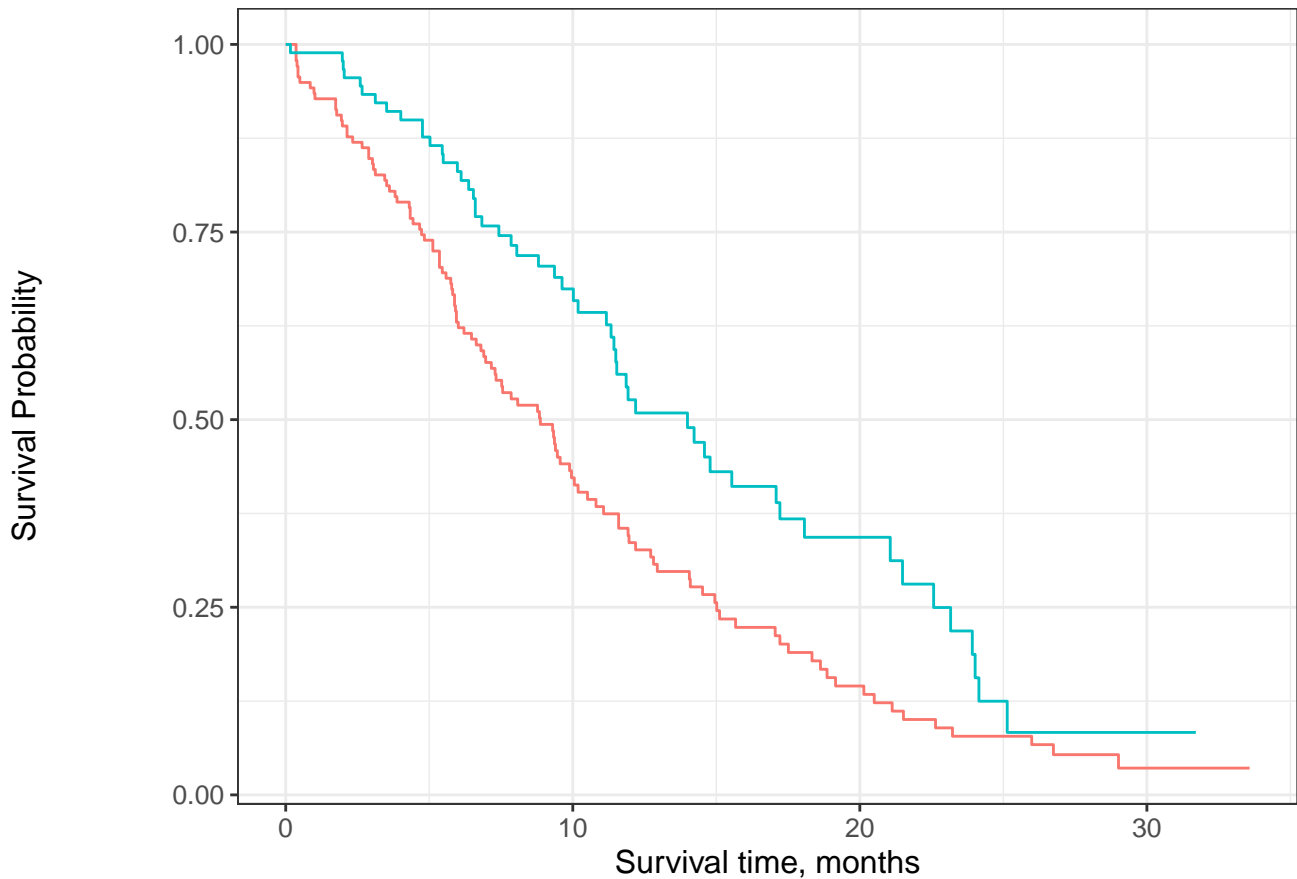
Male, Asymptomatic	36	18	6	1
Male, Symptomatic and ambulatory	71	20	5	1
Male, In bed <50% of the day	29	6	2	0
Male, In bed > 50% of the day	1	0	0	0
Female, Asymptomatic	27	13	2	0
Female, Symptomatic and ambulatory	42	23	8	1
Female, In bed <50% of the day	21	7	1	0

CUM EVENTS

Male, Asymptomatic	0	13	24	28
Male, Symptomatic and ambulatory	0	39	51	54
Male, In bed <50% of the day	0	22	26	28
Male, In bed > 50% of the day	0	1	1	1
Female, Asymptomatic	0	4	8	9
Female, Symptomatic and ambulatory	0	12	22	28
Female, In bed <50% of the day	0	11	15	16

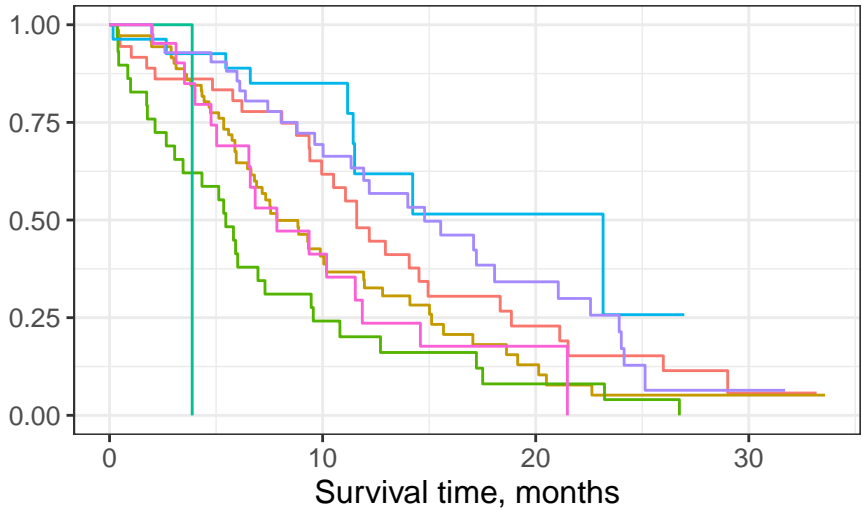


	0	10	20	30
N RISK	228	87	24	3
CUM EVENTS	0	103	148	165



Male		Female	
N RISK	138	44	13
CUM EVENTS	0	76	103
Female		Male	
N RISK	90	43	11
CUM EVENTS	0	27	45

Survival Probability



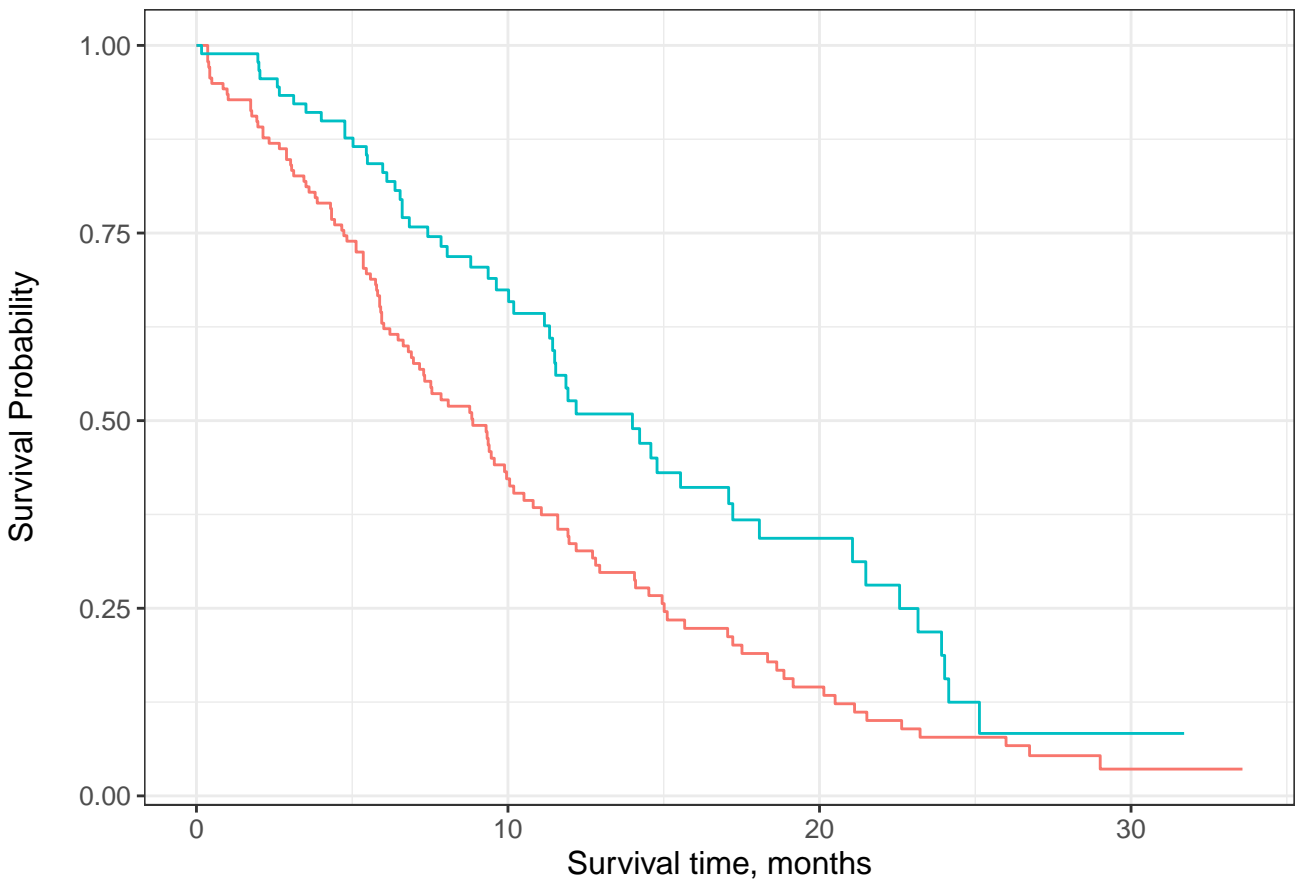
Male, Asymptomatic Male, In bed <50% of the day Female, Asymptomatic
 Male, Symptomatic and ambulatory Male, In bed >50% of the day Female, Symptomatic and ambulatory

N RISK

Male, Asymptomatic	36	18	6	1
Male, Symptomatic and ambulatory	71	20	5	1
Male, In bed <50% of the day	29	6	2	0
Male, In bed >50% of the day	1	0	0	0
Female, Asymptomatic	27	13	2	0
Female, Symptomatic and ambulatory	42	23	8	1
Female, In bed <50% of the day	21	7	1	0

CUM EVENTS

Male, Asymptomatic	0	13	24	28
Male, Symptomatic and ambulatory	0	39	51	54
Male, In bed <50% of the day	0	22	26	28
Male, In bed >50% of the day	0	1	1	1
Female, Asymptomatic	0	4	8	9
Female, Symptomatic and ambulatory	0	12	22	28
Female, In bed <50% of the day	0	11	15	16



— Male — Female

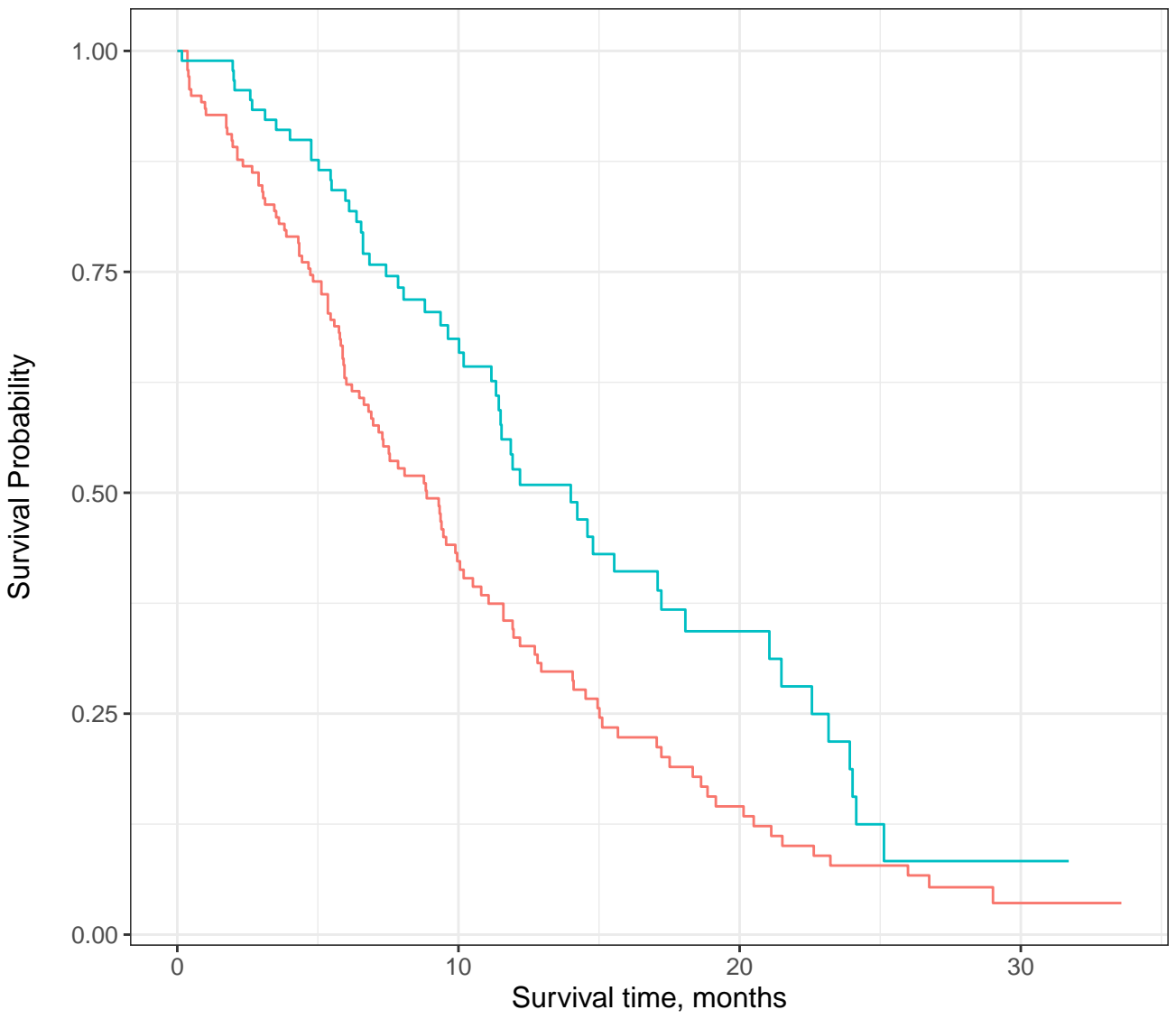
Male

At Risk	138	44	13	2
Events	0	76	103	112

Female

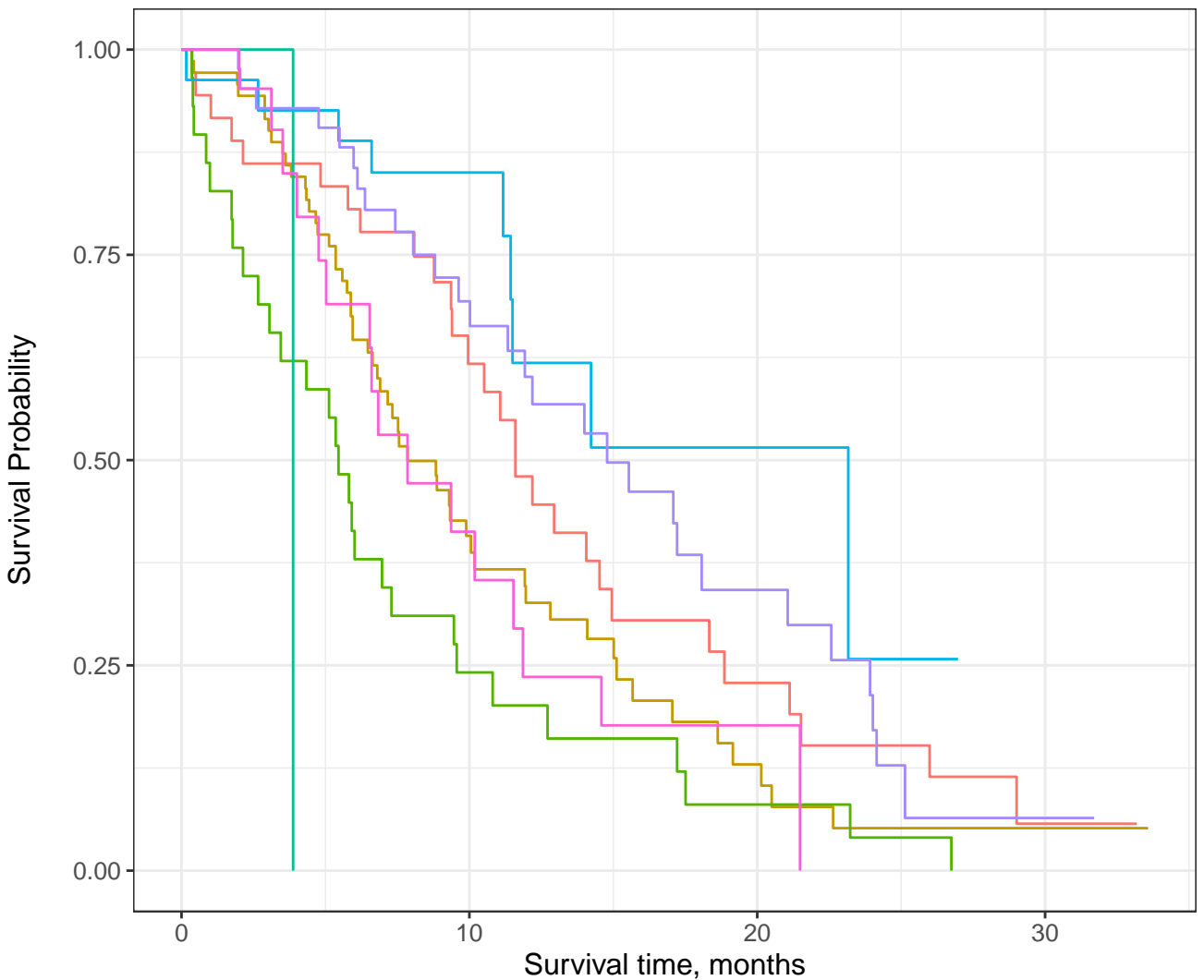
At Risk	90	43	11	1
Events	0	27	45	53

		Survival time, months			
		Male, In bed <50% of the day	Female, Asymptomatic	Female, Symptomatic and ambulatory	Female, In bed <50% of the day
Survival	At Risk	36	18	6	1
	Events	0	13	24	28
Male, Asymptomatic					
Survival	At Risk	71	20	5	1
	Events	0	39	51	54
Male, Symptomatic and ambulatory					
Survival	At Risk	29	6	2	0
	Events	0	22	26	28
Male, In bed <50% of the day					
Survival	At Risk	1	0	0	0
	Events	0	1	1	1
Male, In bed > 50% of the day					
Survival	At Risk	27	13	2	0
	Events	0	4	8	9
Female, Asymptomatic					
Survival	At Risk	42	23	8	1
	Events	0	12	22	28
Female, Symptomatic and ambulatory					
Survival	At Risk	21	7	1	0
	Events	0	11	15	16
Female, In bed <50% of the day					



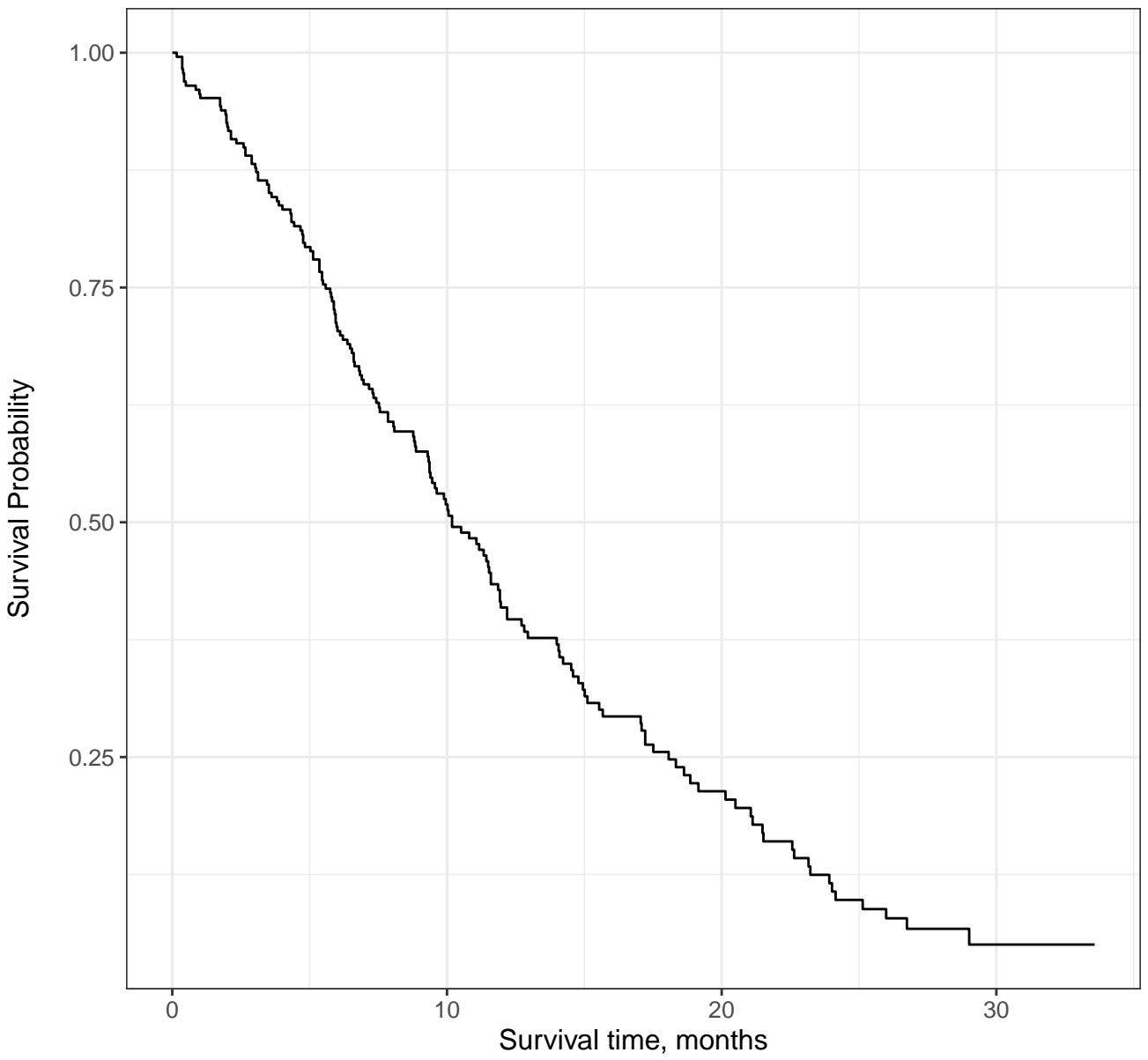
— Male — Female

At Risk	228	87	24	3
Events	0	103	148	165



Asymptomatic
 Asymptomatic and ambulatory
 Male, In bed <50% of the day
 Male, In bed > 50% of the day
 Female, Asymptomatic
 Female, Symptomatic and ambulatory
 Female, Symptomatic and ambulatory
 Female, Symptomatic and ambulatory

At Risk	227	87	24	3
Events	0	102	147	218



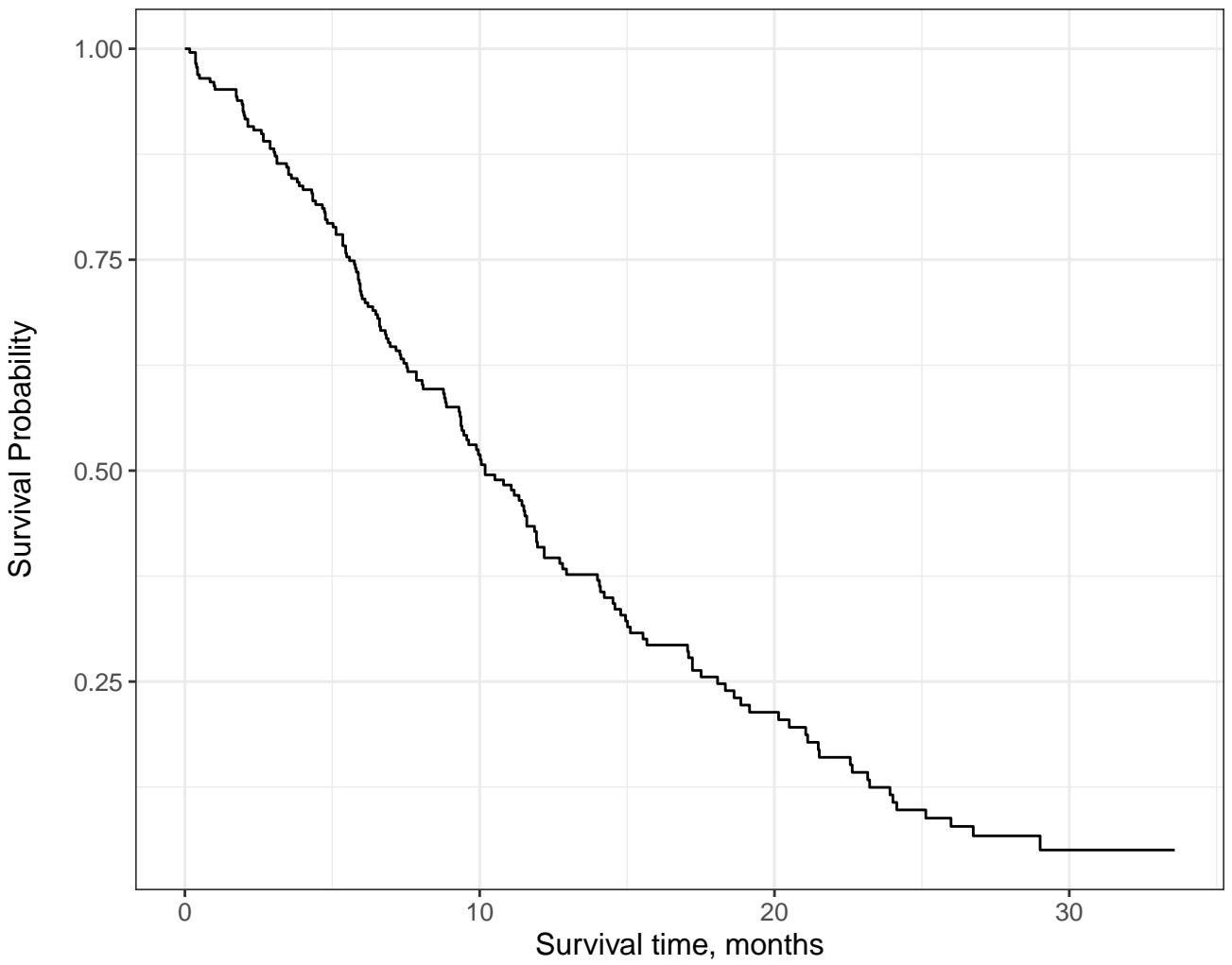
At Risk

Overall 228

87

24

3

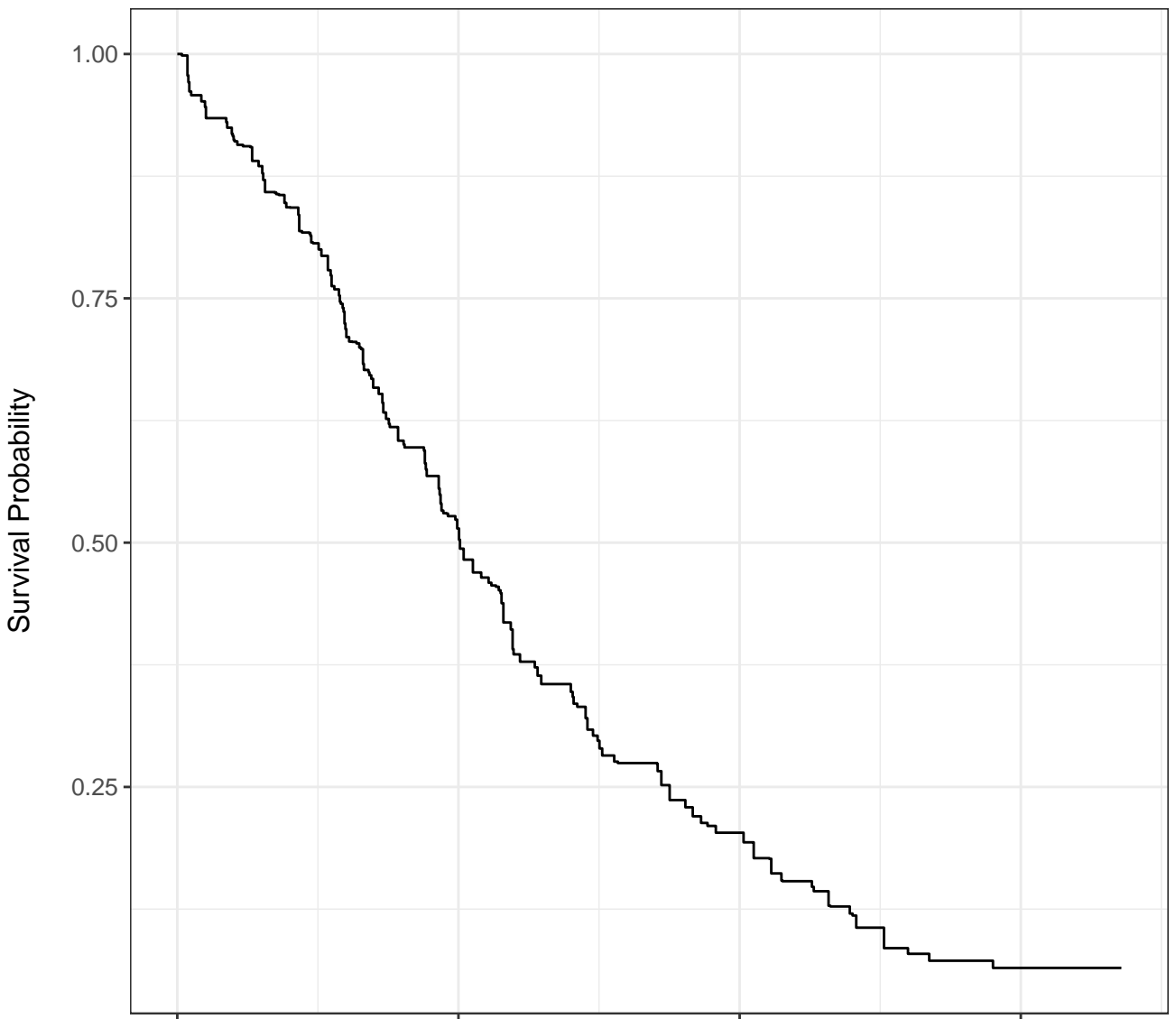


At Risk

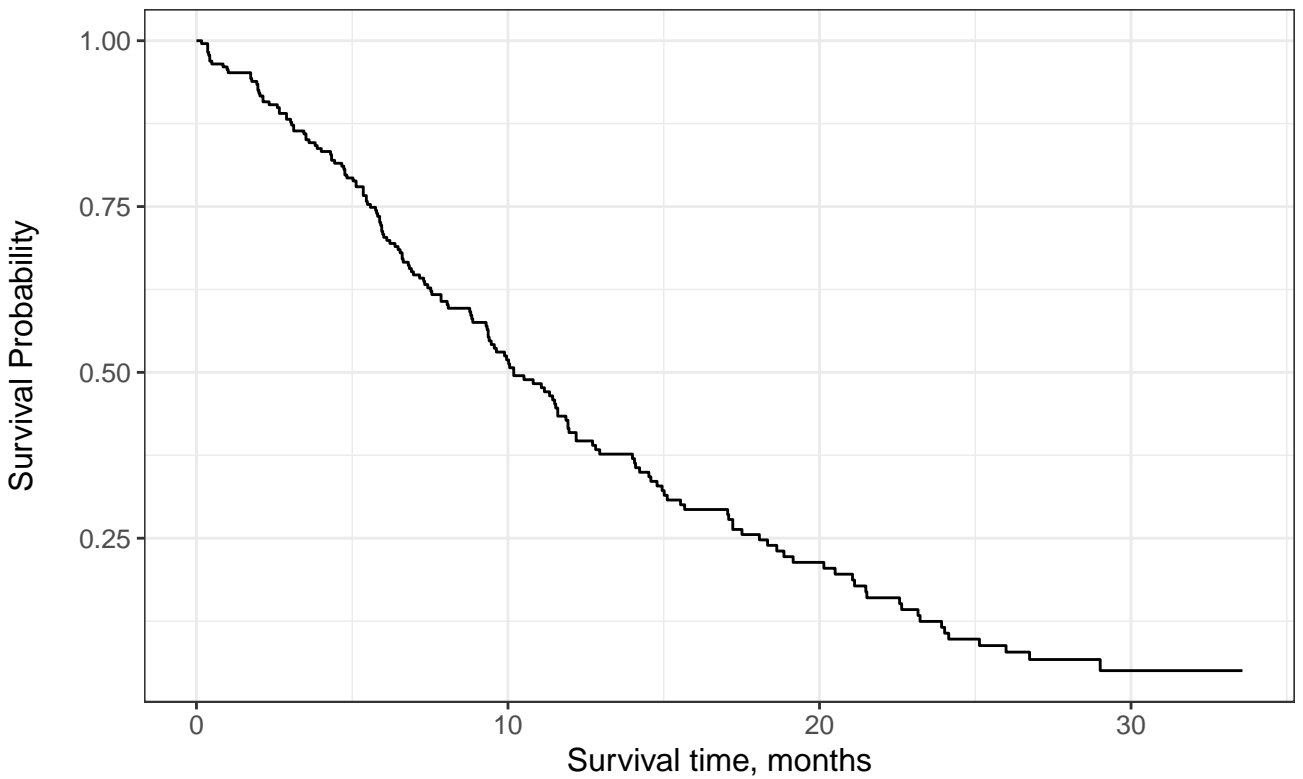
Overall	228	87	24	3
---------	-----	----	----	---

Events

Overall	0	103	148	165
---------	---	-----	-----	-----



	0	10	20	30
At Risk	187	71	17	2
Events	0	85	122	133



At Risk

228

87

24

3

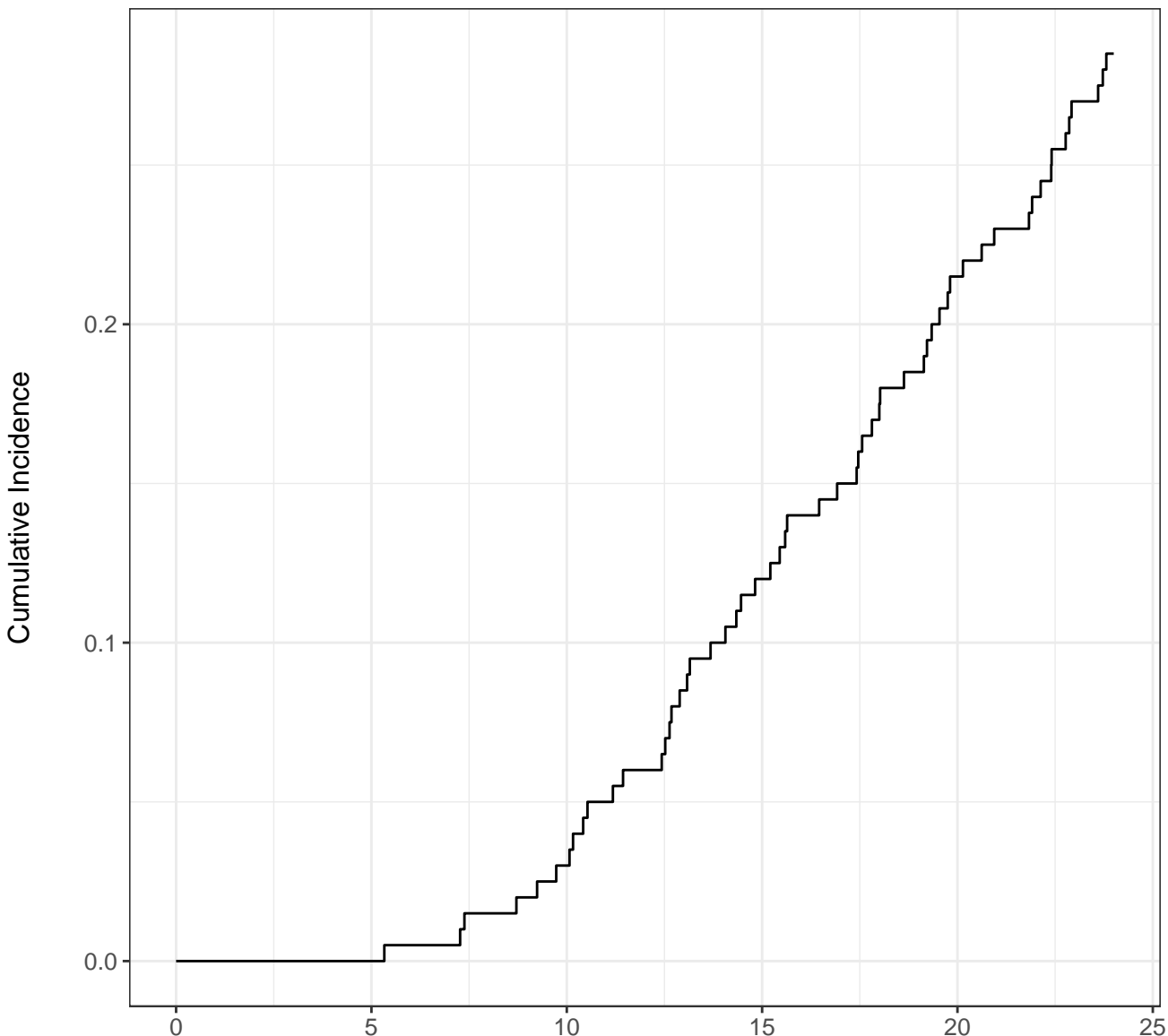
Events

0

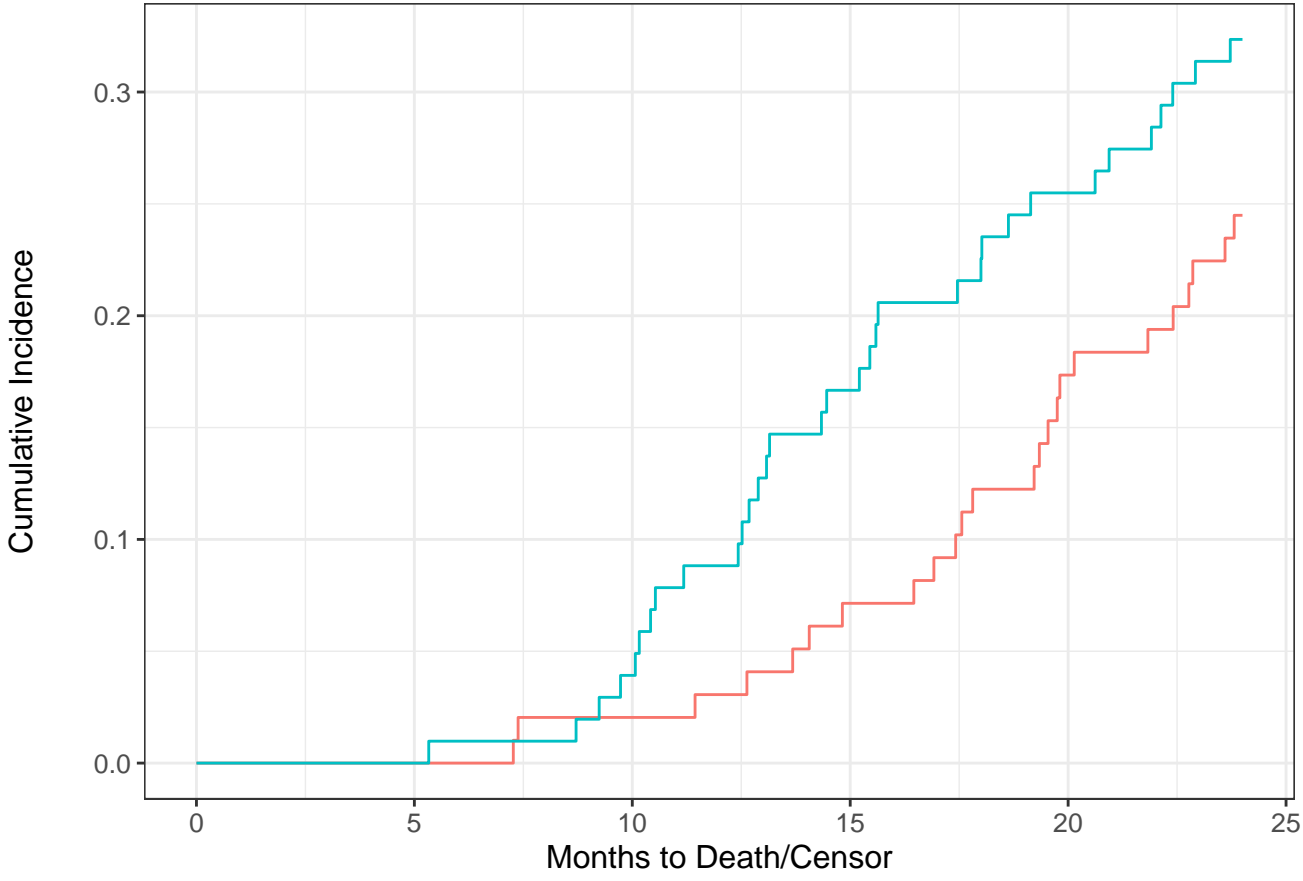
103

148

165



At Risk	200	199	189	158	116	0
Events	0	0	6	24	43	57



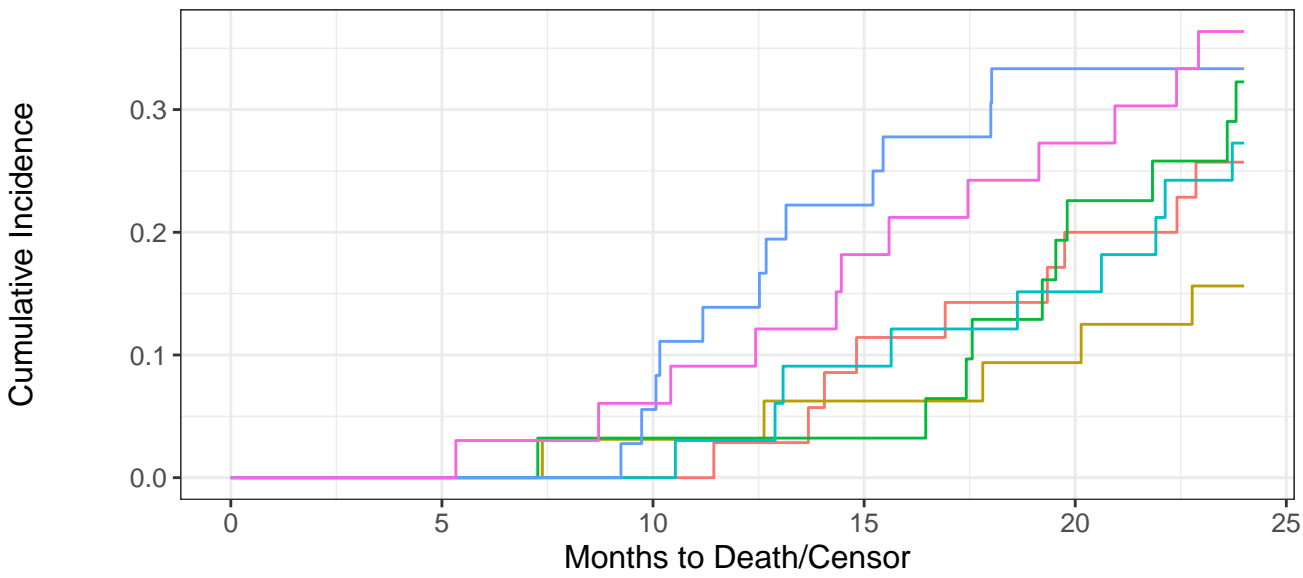
— Drug A — Drug B

Drug A

At Risk	98	97	94	83	61	0
Events	0	0	2	7	17	24

Drug B

At Risk	102	102	95	75	55	0
Events	0	0	4	17	26	33



— Drug A, I — Drug A, III — Drug B, II
— Drug A, II — Drug B, I — Drug B, III

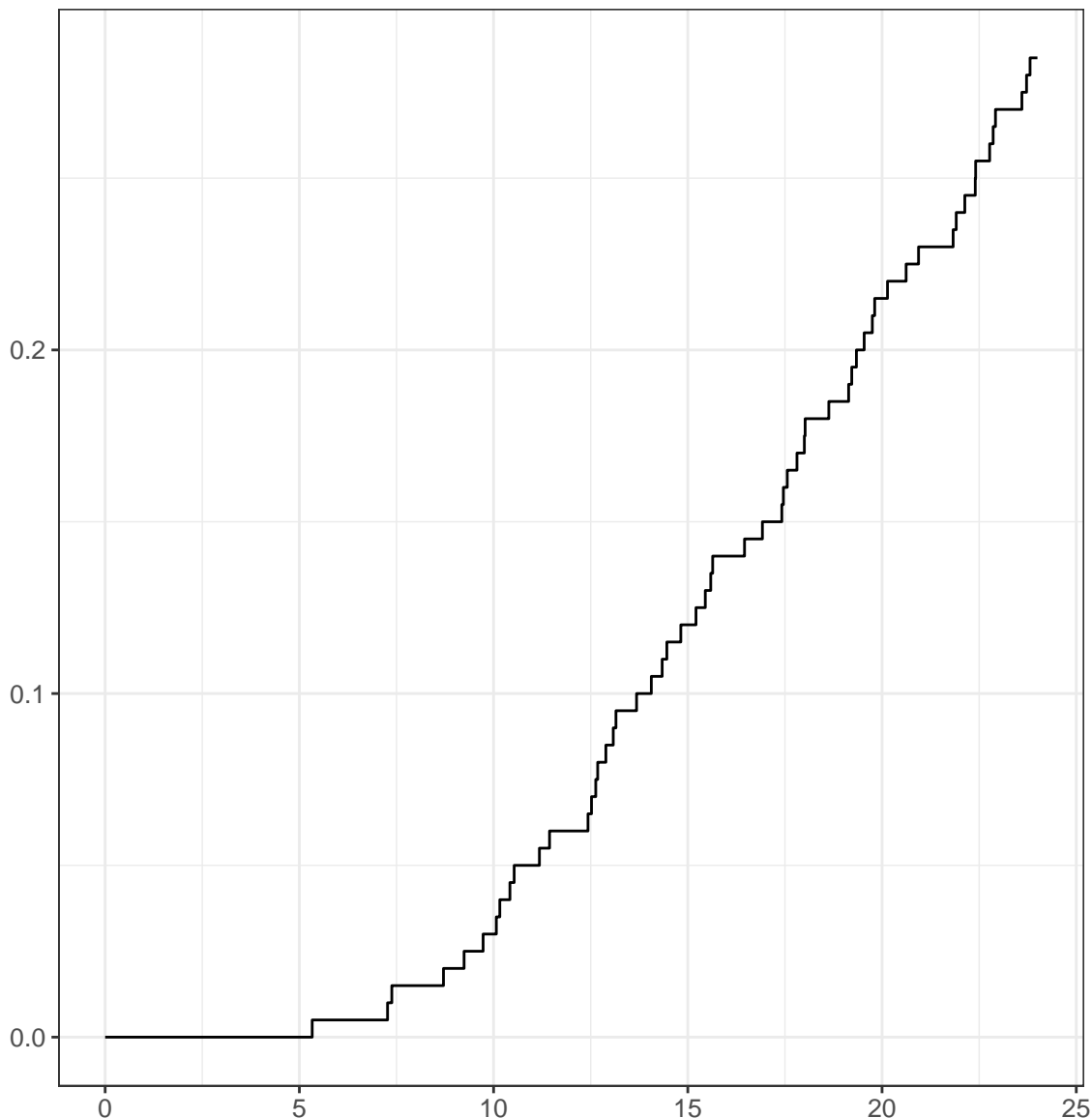
At Risk

Drug A, I	35	35	35	30	22	0
Drug A, II	32	32	30	27	23	0
Drug A, III	31	30	29	26	16	0
Drug B, I	33	33	33	28	23	0
Drug B, II	36	36	32	23	17	0
Drug B, III	33	33	30	24	15	0

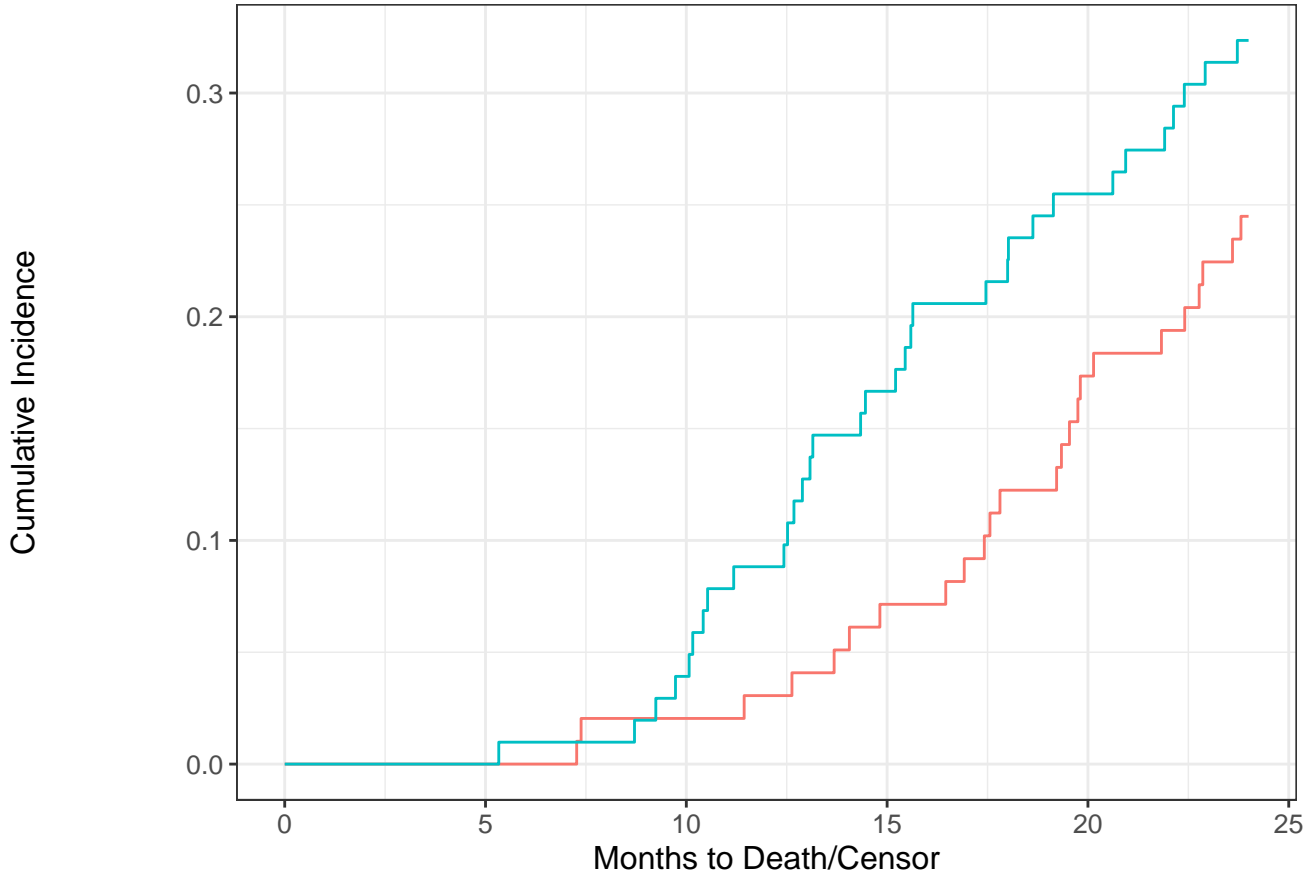
Events

Drug A, I	0	0	0	4	7	9
Drug A, II	0	0	1	2	3	5
Drug A, III	0	0	1	1	7	10
Drug B, I	0	0	0	3	5	9
Drug B, II	0	0	2	8	12	12
Drug B, III	0	0	2	6	9	12

Cumulative Incidence



At Risk	200	199	189	158	116	0
CUM EVENTS	0	0	6	24	43	57



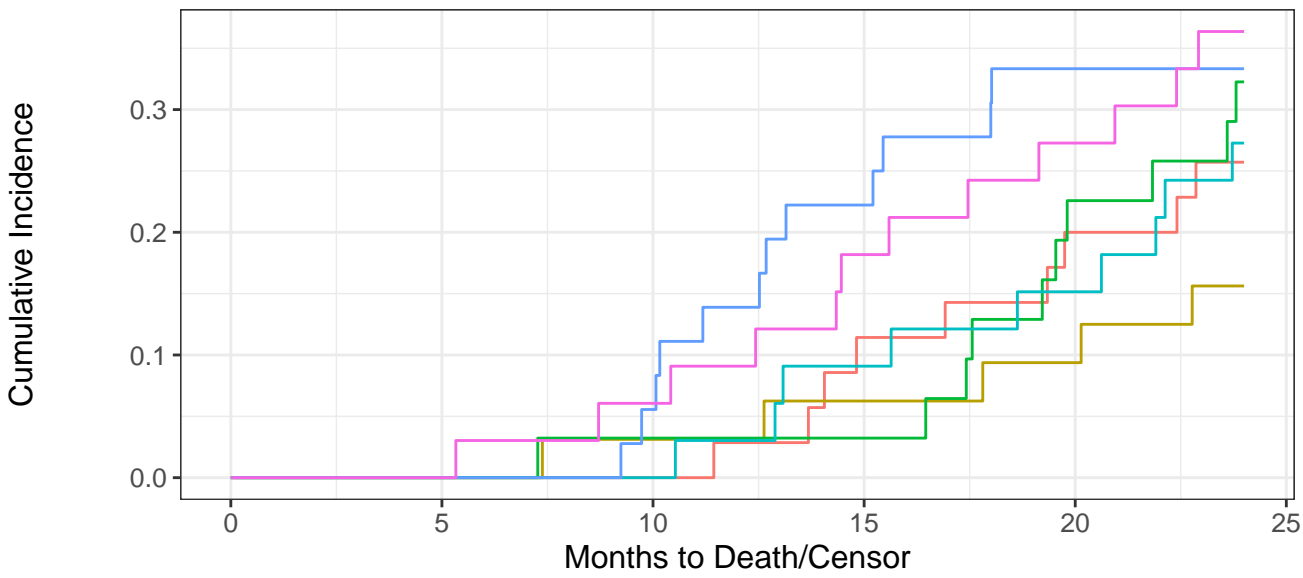
— Drug A — Drug B

Drug A

At Risk	98	97	94	83	61	0
CUM EVENTS	0	0	2	7	17	24

Drug B

At Risk	102	102	95	75	55	0
CUM EVENTS	0	0	4	17	26	33



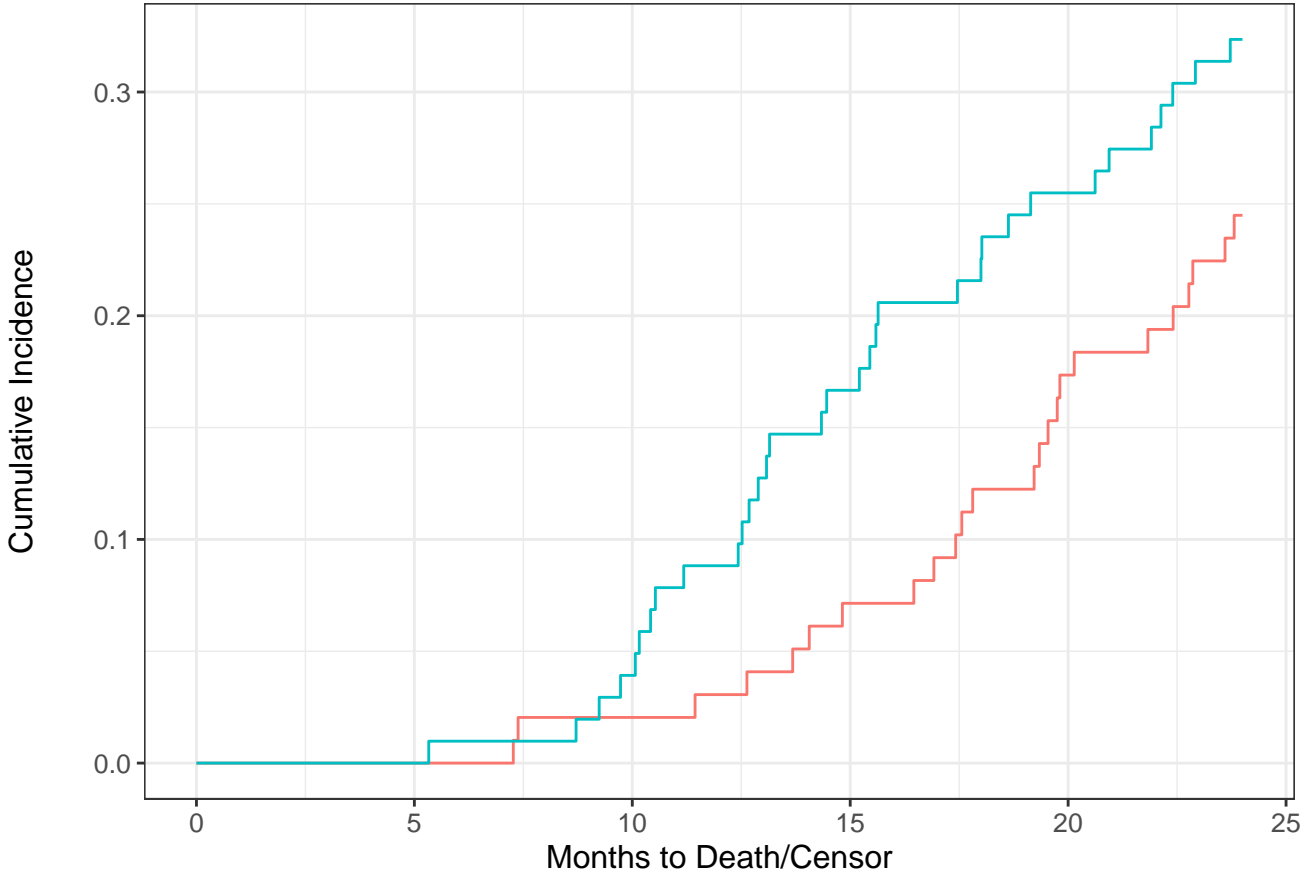
— Drug A, I — Drug A, III — Drug B, II
— Drug A, II — Drug B, I — Drug B, III

At Risk

Drug A, I	35	35	35	30	22	0
Drug A, II	32	32	30	27	23	0
Drug A, III	31	30	29	26	16	0
Drug B, I	33	33	33	28	23	0
Drug B, II	36	36	32	23	17	0
Drug B, III	33	33	30	24	15	0

CUM EVENTS

Drug A, I	0	0	0	4	7	9
Drug A, II	0	0	1	2	3	5
Drug A, III	0	0	1	1	7	10
Drug B, I	0	0	0	3	5	9
Drug B, II	0	0	2	8	12	12
Drug B, III	0	0	2	6	9	12



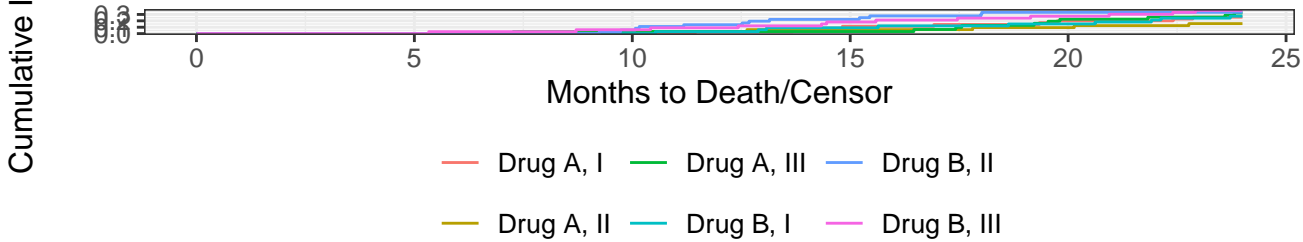
— Drug A — Drug B

Drug A

At Risk	98	97	94	83	61	0
Events	0	0	2	7	17	24

Drug B

At Risk	102	102	95	75	55	0
Events	0	0	4	17	26	33



Drug A, I

At Risk	35	35	35	30	22	0
Events	0	0	0	4	7	9

Drug A, II

At Risk	32	32	30	27	23	0
Events	0	0	1	2	3	5

Drug A, III

At Risk	31	30	29	26	16	0
Events	0	0	1	1	7	10

Drug B, I

At Risk	33	33	33	28	23	0
Events	0	0	0	3	5	9

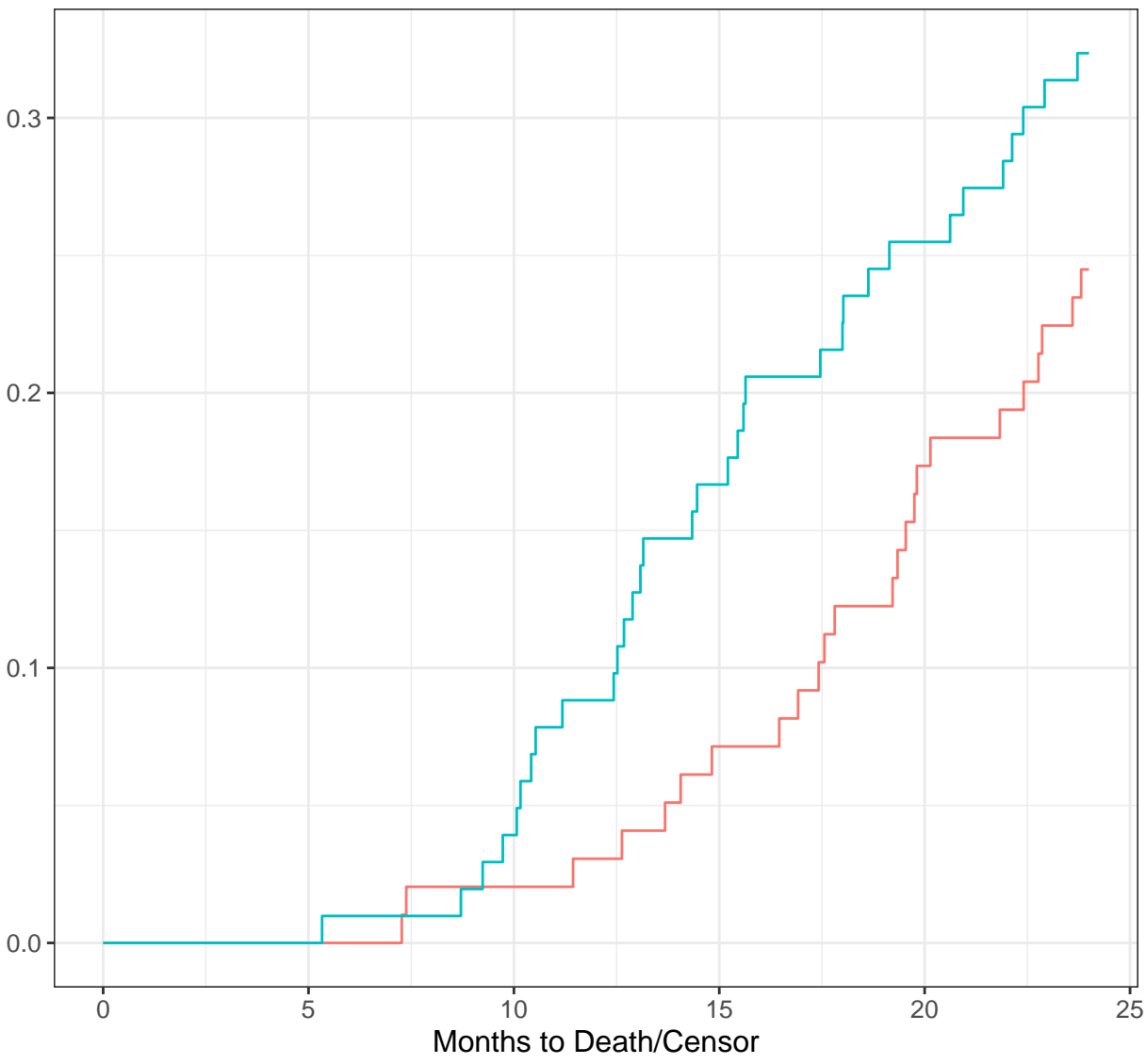
Drug B, II

At Risk	36	36	32	23	17	0
Events	0	0	2	8	12	12

Drug B, III

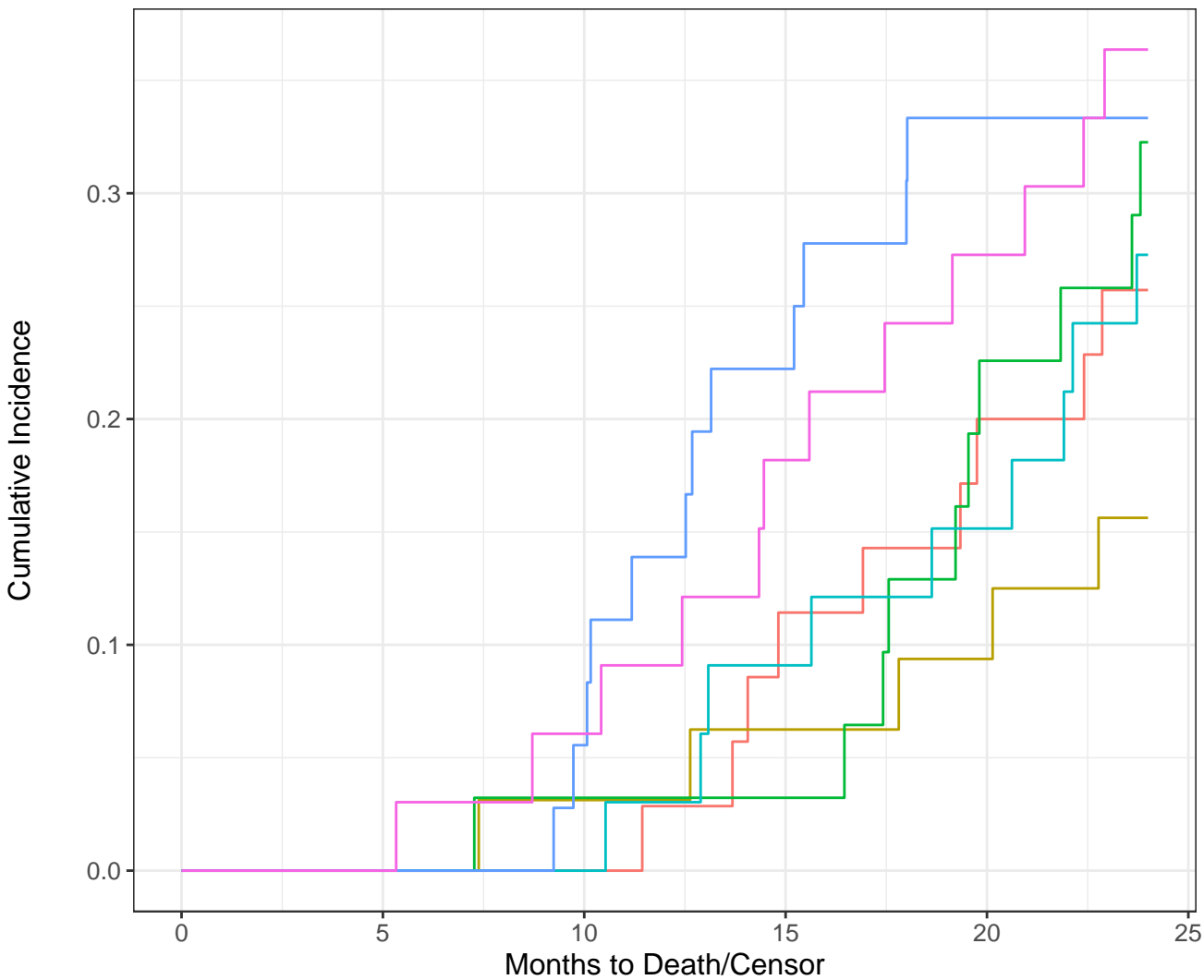
At Risk	33	33	30	24	15	0
Events	0	0	2	6	9	12

Cumulative Incidence



— Drug A — Drug B

At Risk	200	199	189	158	116	0
Events	0	0	6	24	43	57



— Drug A, I — Drug A, III — Drug B, II
— Drug A, II — Drug B, I — Drug B, III

At Risk	200	199	189	158	116	0
Events	0	0	6	24	43	57

Cumulative Incidence

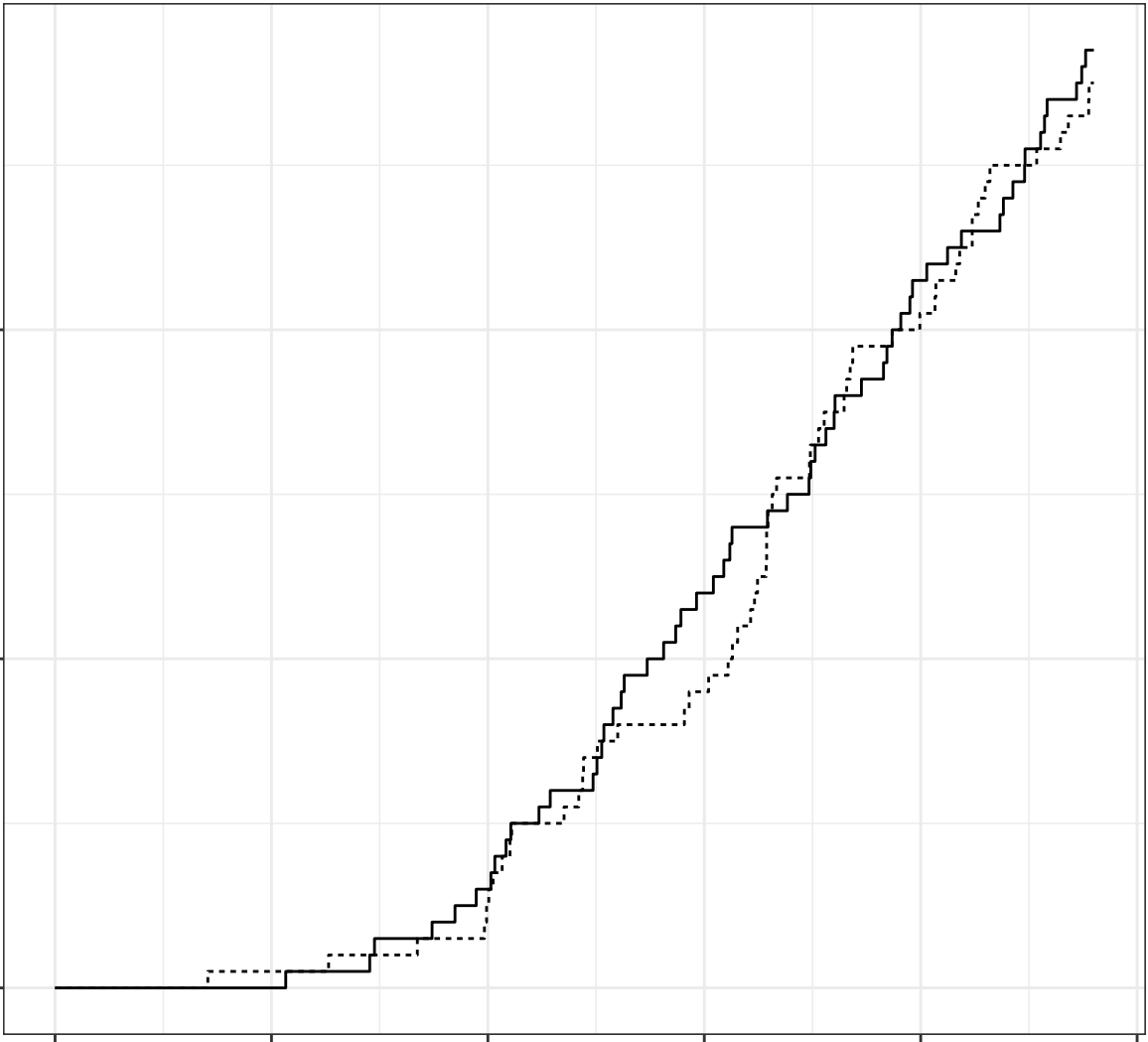
0.0
0.1
0.2

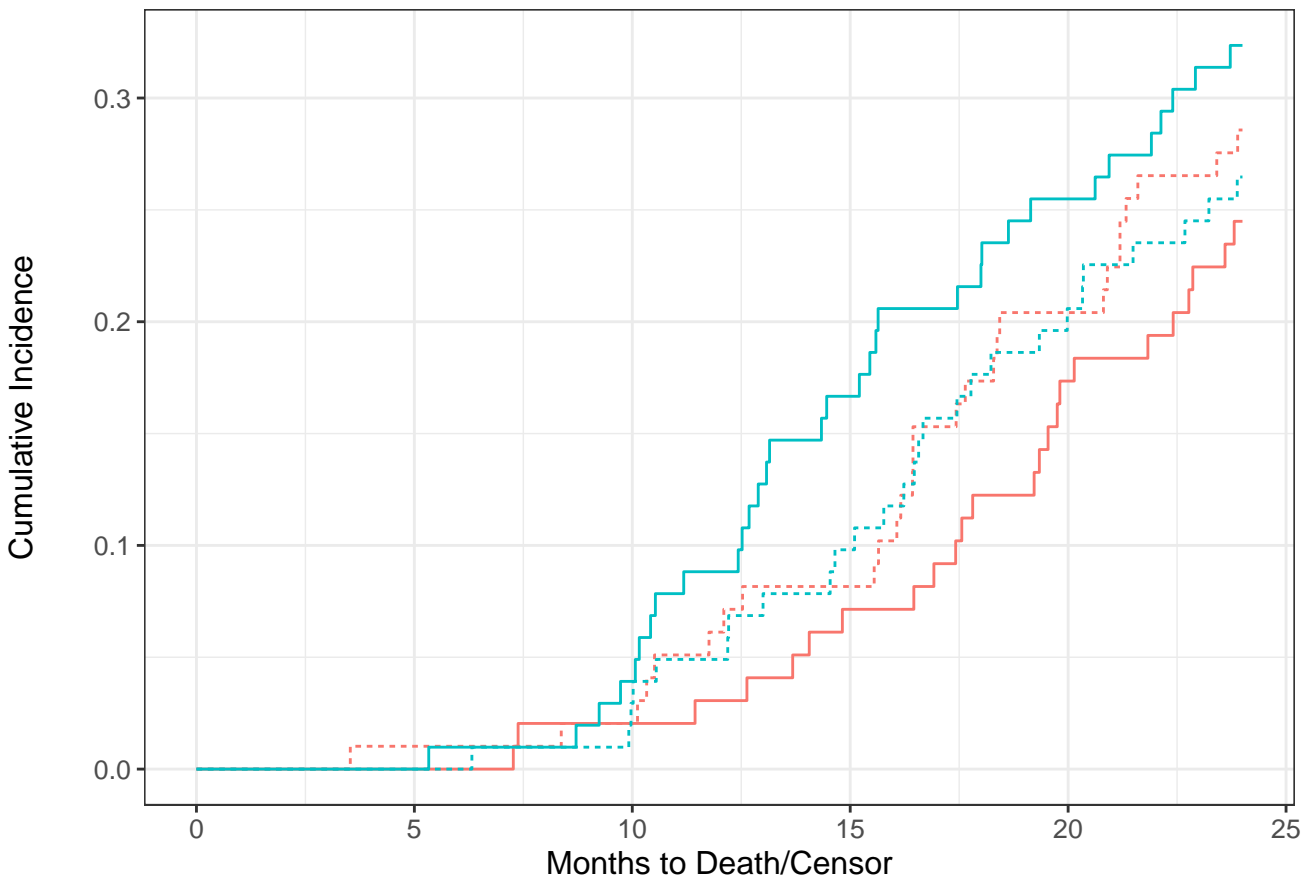
0 5 10 15 20 25

Months to Death/Censor

— death from cancer ···· death other causes

At Risk	200	199	189	158	116	0
Events	0	1	11	42	84	11





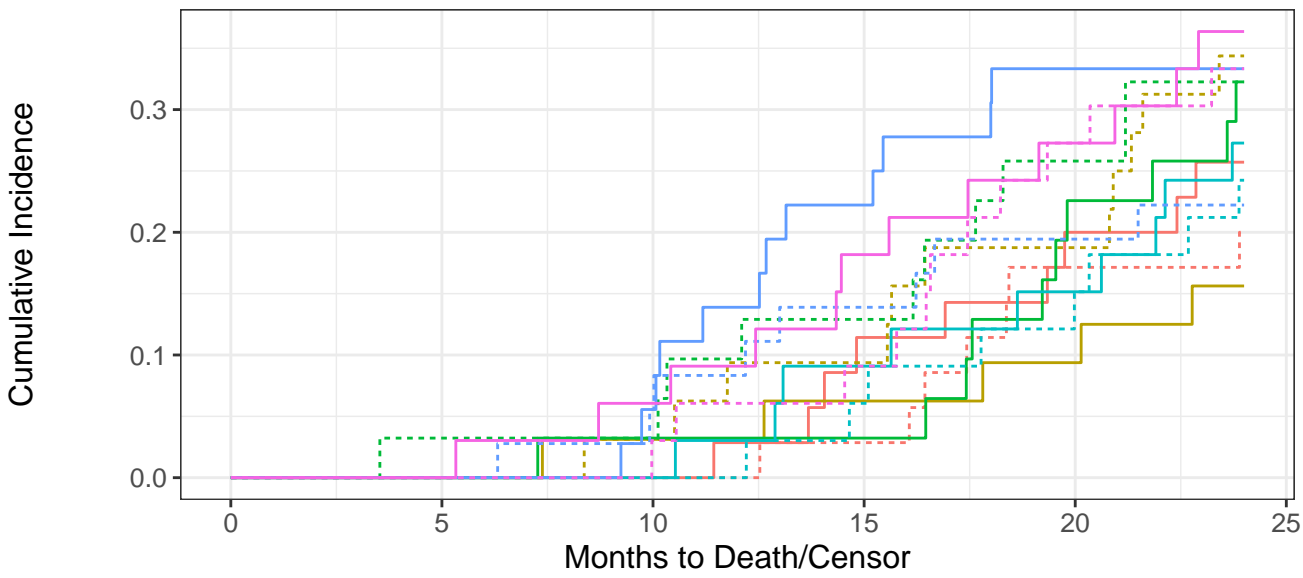
— Drug A — Drug B — death from cancer ···· death other causes

Drug A

At Risk	98	97	94	83	61	0
Events	0	1	4	15	37	52

Drug B

At Risk	102	102	95	75	55	0
Events	0	0	7	27	47	60



— death from cancer - - - - death other causes — Drug A, I — Drug A, III — Drug B, II
 — Drug A, II — Drug B, I — Drug B, III

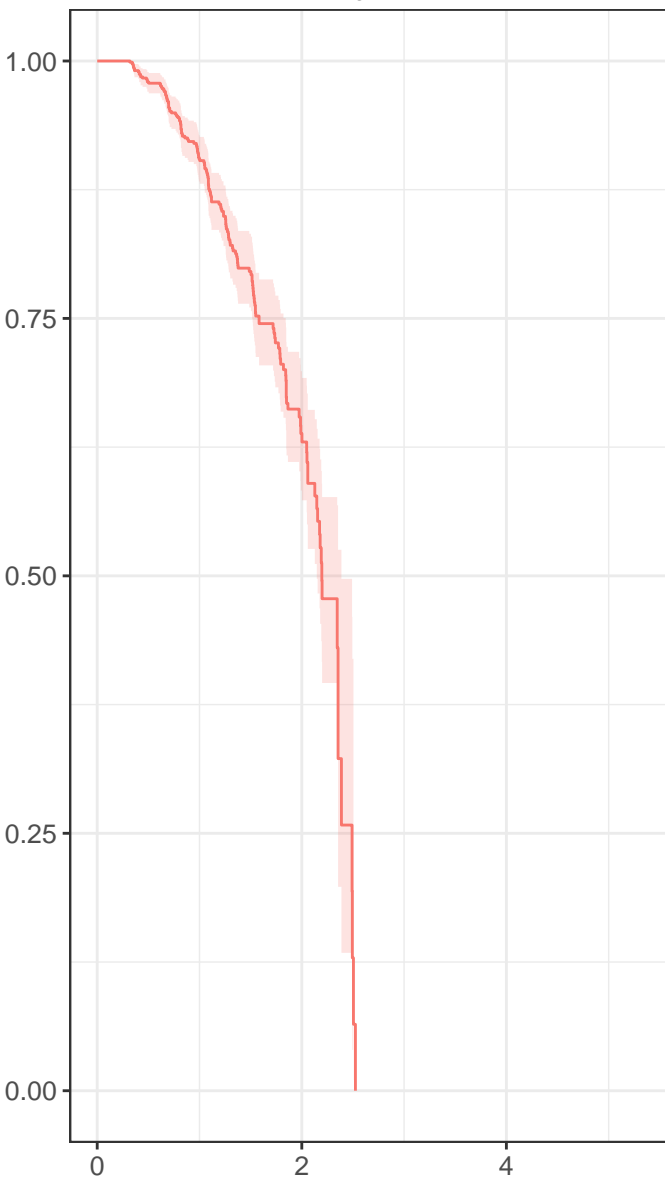
At Risk

Drug A, I	35	35	35	30	22	0
Drug A, II	32	32	30	27	23	0
Drug A, III	31	30	29	26	16	0
Drug B, I	33	33	33	28	23	0
Drug B, II	36	36	32	23	17	0
Drug B, III	33	33	30	24	15	0

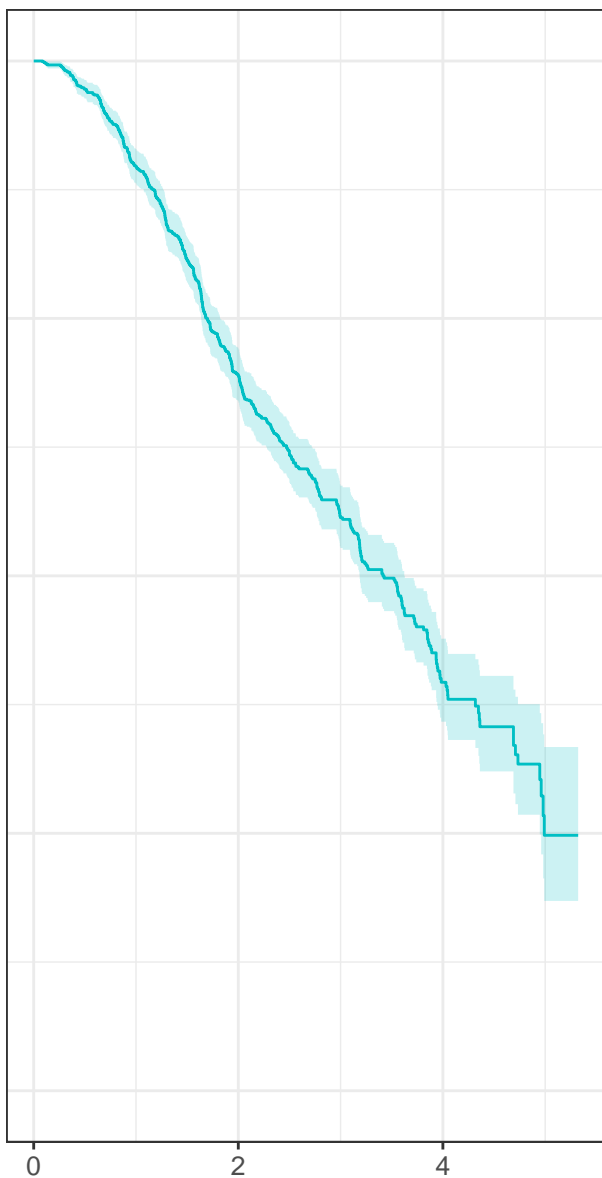
Events

Drug A, I	0	0	0	5	13	16
Drug A, II	0	0	2	5	9	16
Drug A, III	0	1	2	5	15	20
Drug B, I	0	0	0	5	10	17
Drug B, II	0	0	4	13	19	20
Drug B, III	0	0	3	9	18	23

Negative

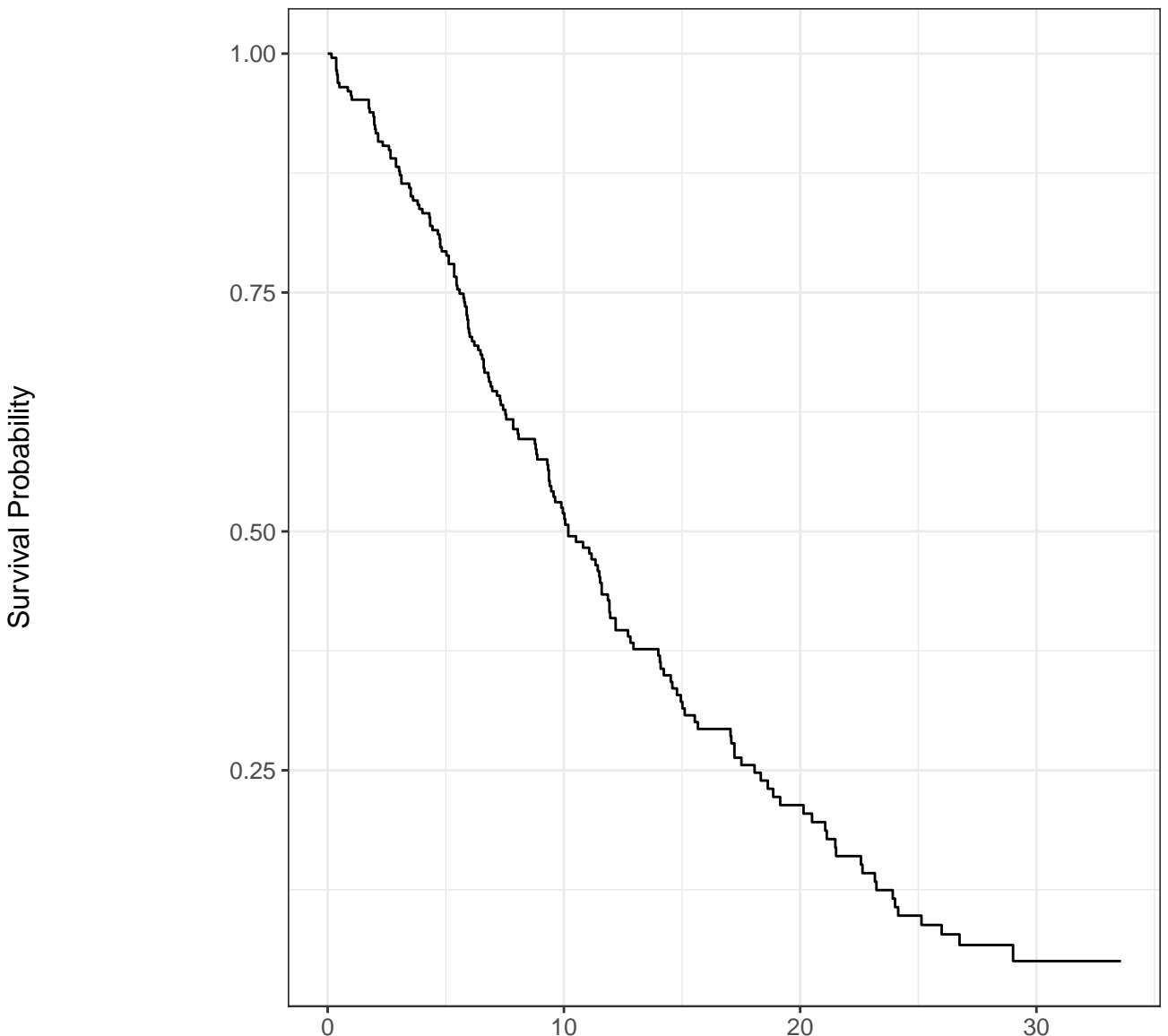


Positive

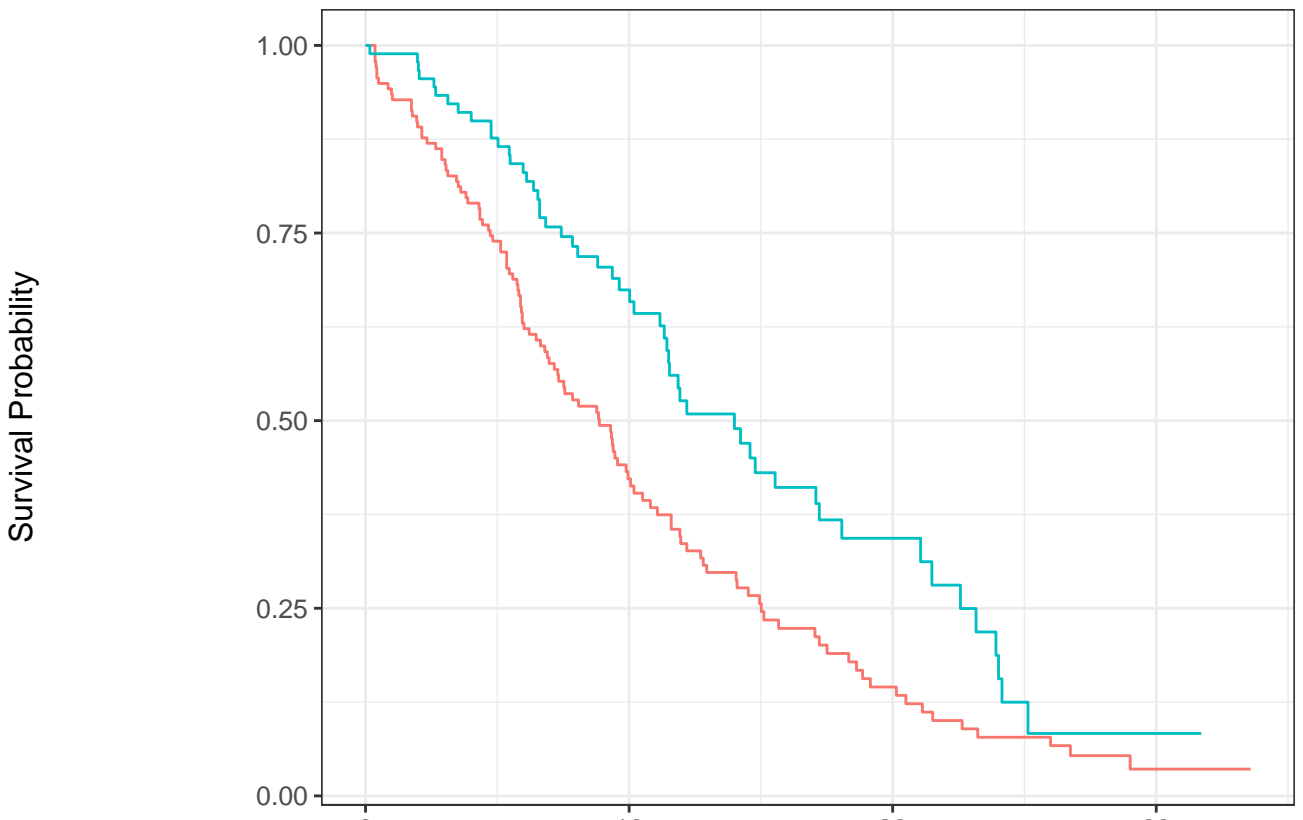


Progression-free survival (years)

Negative Positive



At Risk (Cum. Events)	228 (0)	87 (103)	24 (148)	3 (165)
Survival (95% CI) %	(100, 100)	52% (45, 59)	21% (16, 29)	5% (2, 12)



— Male — Female

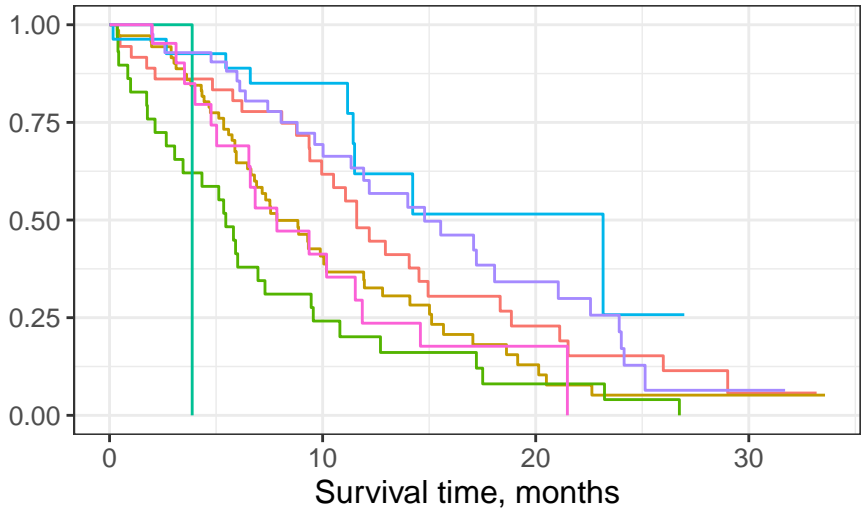
Male

At Risk (Cum. Events)	138 (0)	44 (76)	13 (103)	2 (112)
Survival (95% CI)	% (100, 100)	42% (34, 52)	15% (9, 23)	4% (1, 12)

Female

At Risk (Cum. Events)	90 (0)	43 (27)	11 (45)	1 (53)
Survival (95% CI)	% (100, 100)	67% (58, 78)	34% (24, 49)	8% (3, 27)

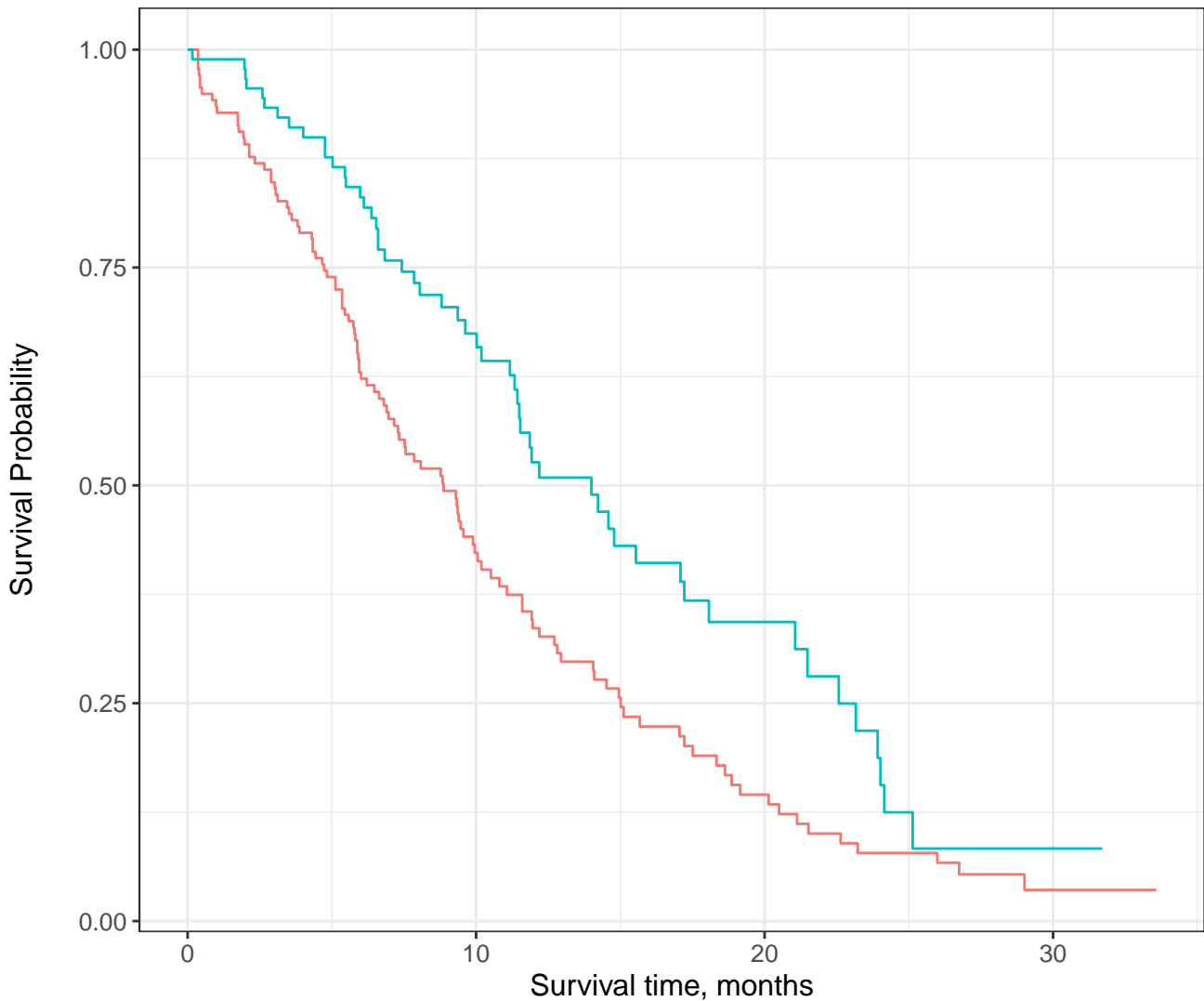
Survival Probability



— Male, Asymptomatic
 — Male, In bed <50% of the day
 — Female, Asymptomatic
— Male, Symptomatic and ambulatory
 — Male, In bed > 50% of the day
 — Female, Symptomatic and ambulatory

	At Risk (Cum. Events)			
Male, Asymptomatic	36 (0)	18 (13)	6 (24)	1 (28)
Male, Symptomatic and ambulatory	71 (0)	20 (39)	5 (51)	1 (54)
Male, In bed <50% of the day	29 (0)	6 (22)	2 (26)	0 (28)
Male, In bed > 50% of the day	1 (0)	0 (1)	0 (1)	0 (1)
Female, Asymptomatic	27 (0)	13 (4)	2 (8)	0 (9)
Female, Symptomatic and ambulatory	42 (0)	23 (12)	8 (22)	1 (28)
Female, In bed <50% of the day	21 (0)	7 (11)	1 (15)	0 (16)

	Survival (95% CI)			
Male, Asymptomatic	> (100, 100)	62% (47, 81)	23% (12, 45)	6% (1, 32)
Male, Symptomatic and ambulatory	> (100, 100)	41% (30, 55)	13% (6, 28)	5% (1, 19)
Male, In bed <50% of the day	> (100, 100)	24% (13, 46)	8% (2, 30)	NA% (NA, NA)
Male, In bed > 50% of the day	> (100, 100)	NA% (NA, NA)	NA% (NA, NA)	NA% (NA, NA)
Female, Asymptomatic	> (100, 100)	85% (73, 100)	52% (30, 88)	NA% (NA, NA)
Female, Symptomatic and ambulatory	> (100, 100)	69% (56, 86)	34% (21, 57)	6% (1, 36)
Female, In bed <50% of the day	> (100, 100)	41% (24, 71)	18% (6, 49)	NA% (NA, NA)

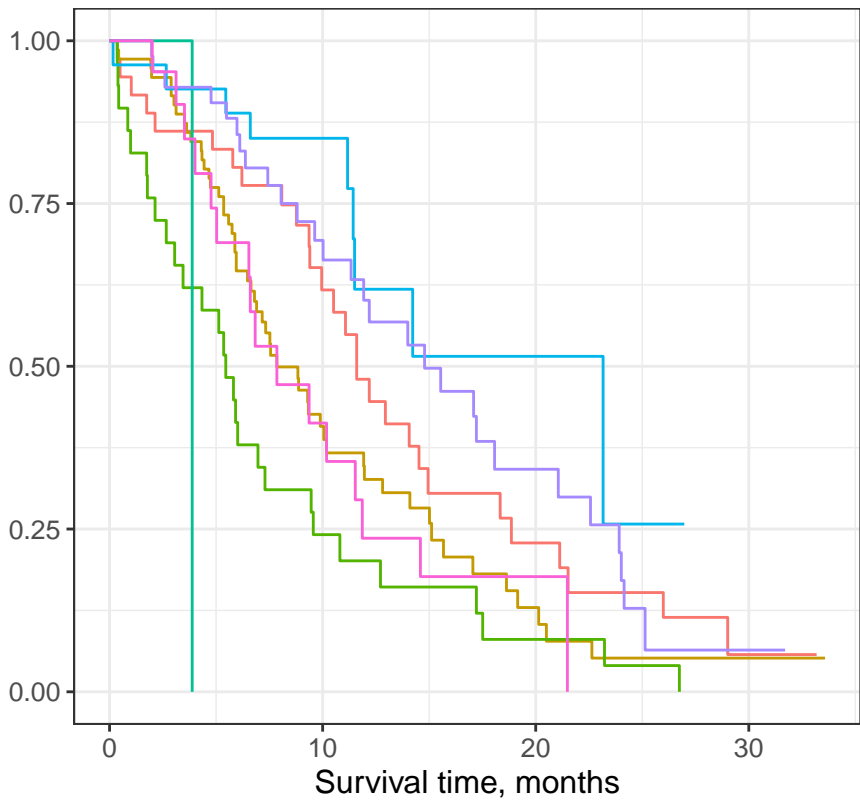


— Male — Female

No. at Risk (Events)

Male	138 (0)	44 (76)	13 (103)	2 (112)
Female	90 (0)	43 (27)	11 (45)	1 (53)

Survival Probability



Male, Asymptomatic

Male, In bed <50% of the day

Female, Asymptomatic

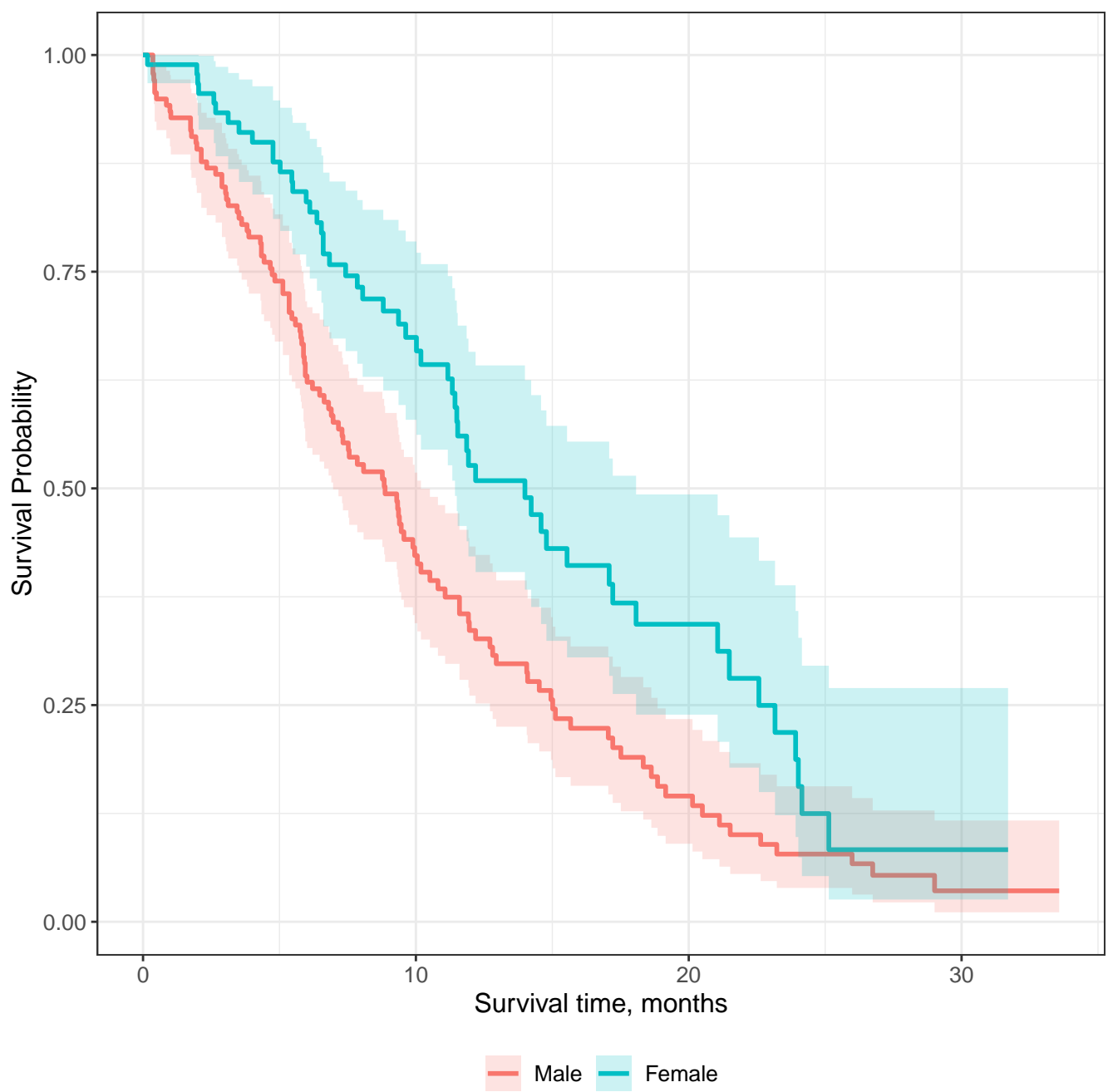
Male, Symptomatic and ambulatory

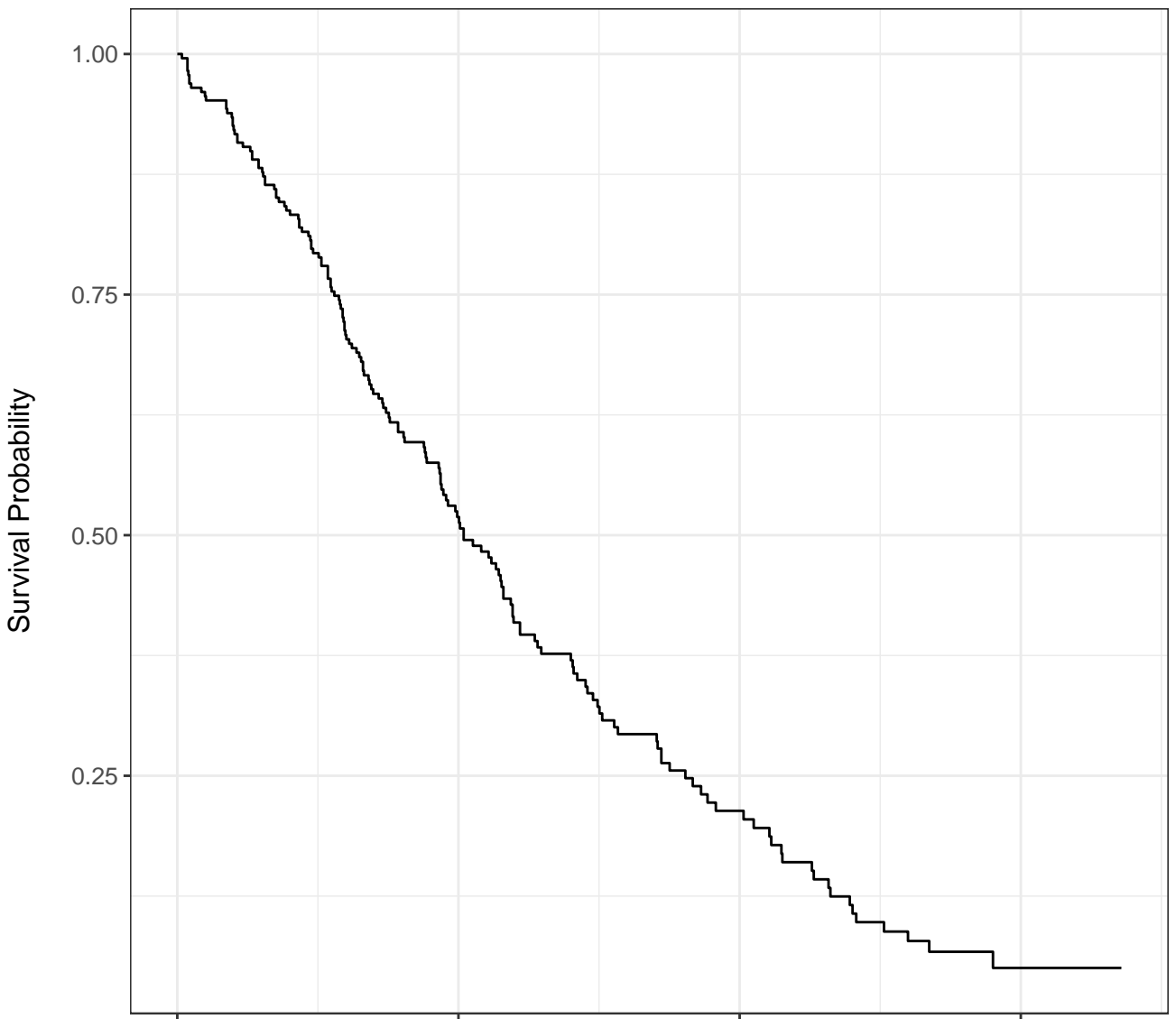
Male, In bed >50% of the day

Female, Symptomatic and ambulatory

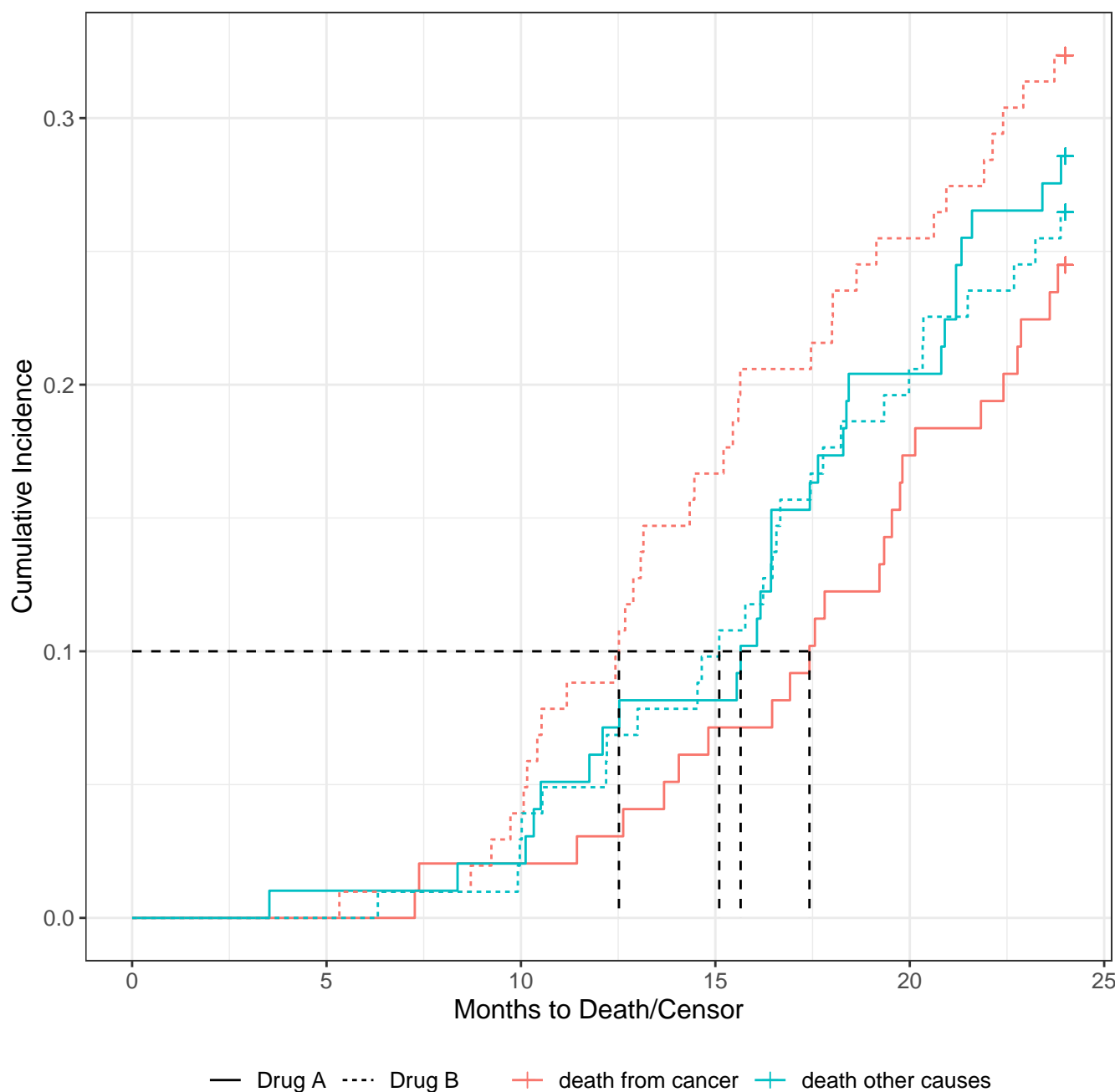
No. at Risk (Events)

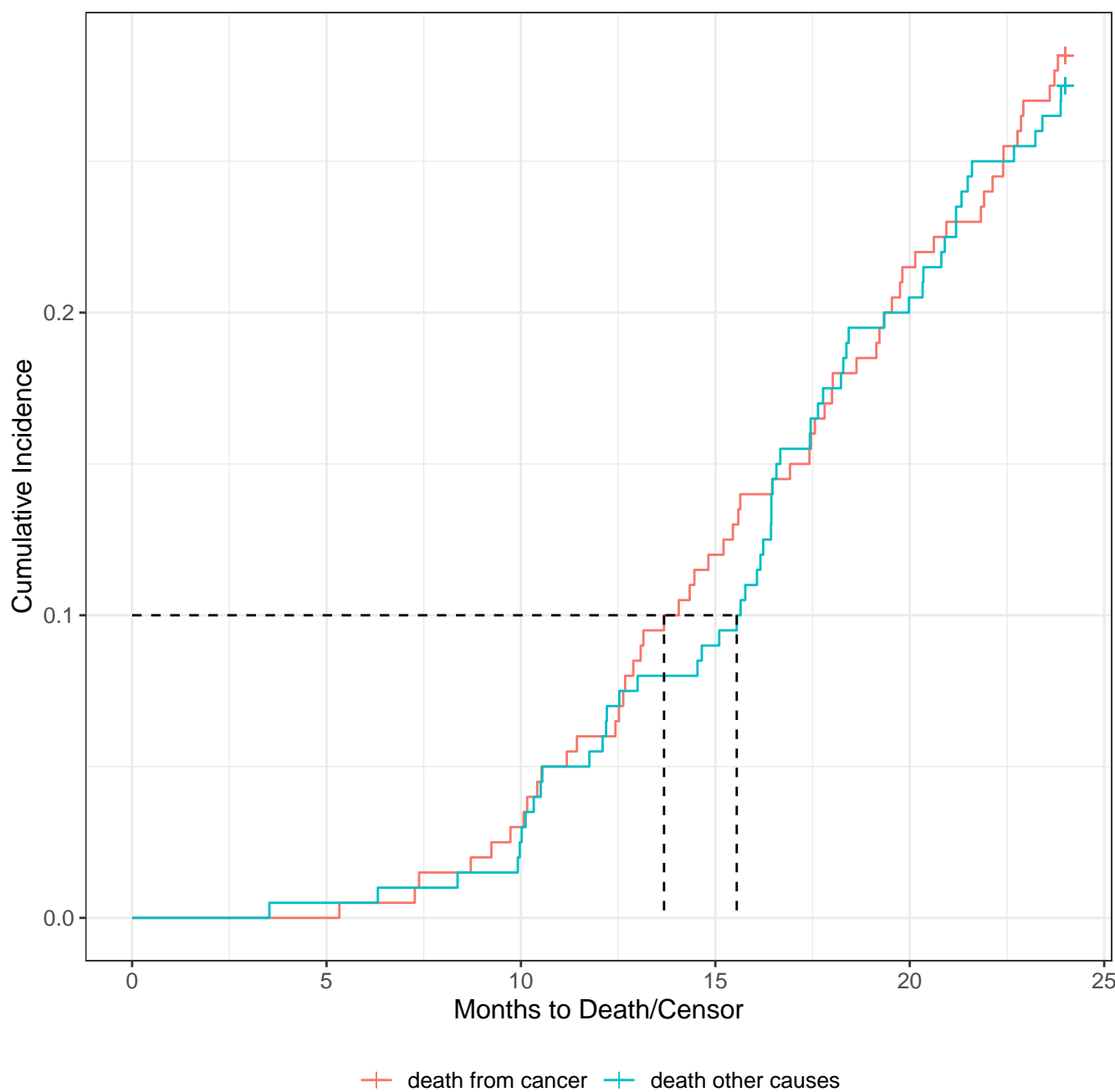
	0	5	10	15	20	25	30	35
Male, Asymptomatic	36 (0)	29 (0)	29 (0)	18 (13)	6 (24)	2 (26)	0 (28)	0 (28)
Male, Symptomatic and ambulatory	71 (0)	65 (0)	55 (0)	40 (39)	20 (51)	5 (51)	1 (54)	1 (54)
Male, In bed <50% of the day	29 (0)	29 (0)	29 (0)	6 (22)	2 (26)	0 (28)	0 (28)	0 (28)
Male, In bed >50% of the day	1 (0)	1 (0)	1 (0)	0 (1)	0 (1)	0 (1)	0 (1)	0 (1)
Female, Asymptomatic	27 (0)	27 (0)	27 (0)	13 (4)	2 (8)	0 (9)	0 (9)	0 (9)
Female, Symptomatic and ambulatory	42 (0)	38 (0)	33 (0)	23 (12)	8 (22)	1 (28)	1 (28)	1 (28)
Female, In bed <50% of the day	21 (0)	21 (0)	21 (0)	7 (11)	1 (15)	0 (16)	0 (16)	0 (16)

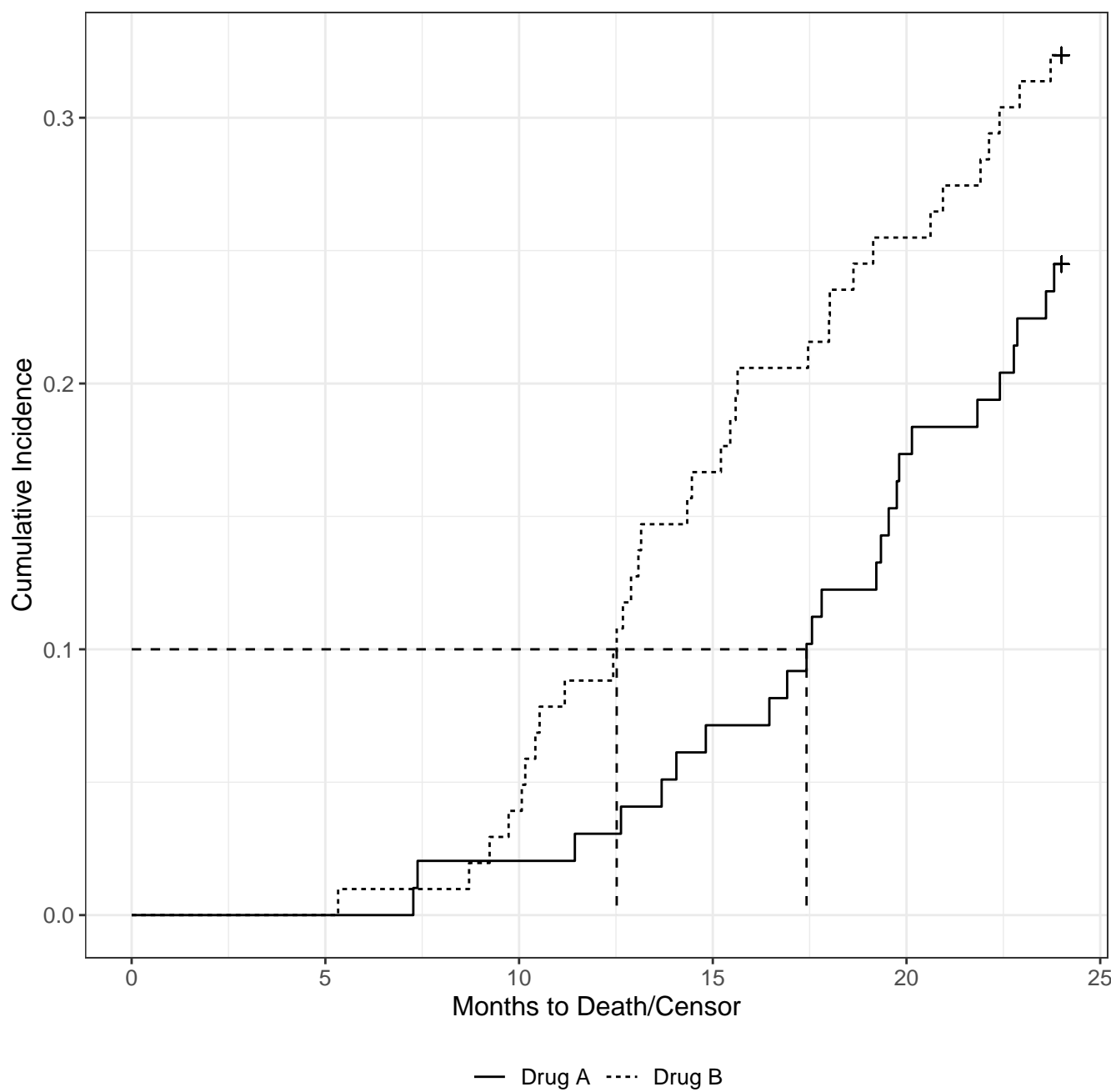


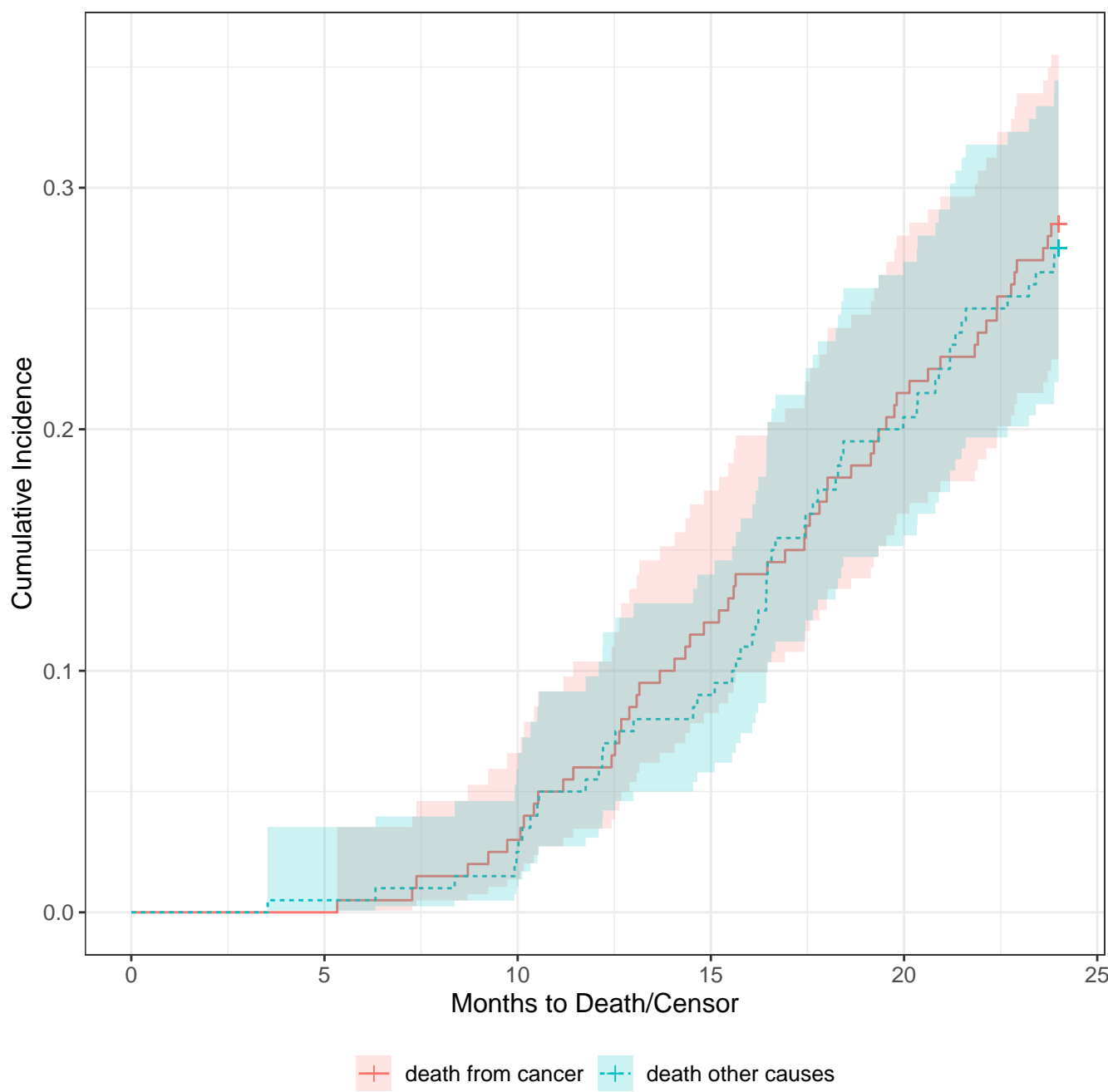


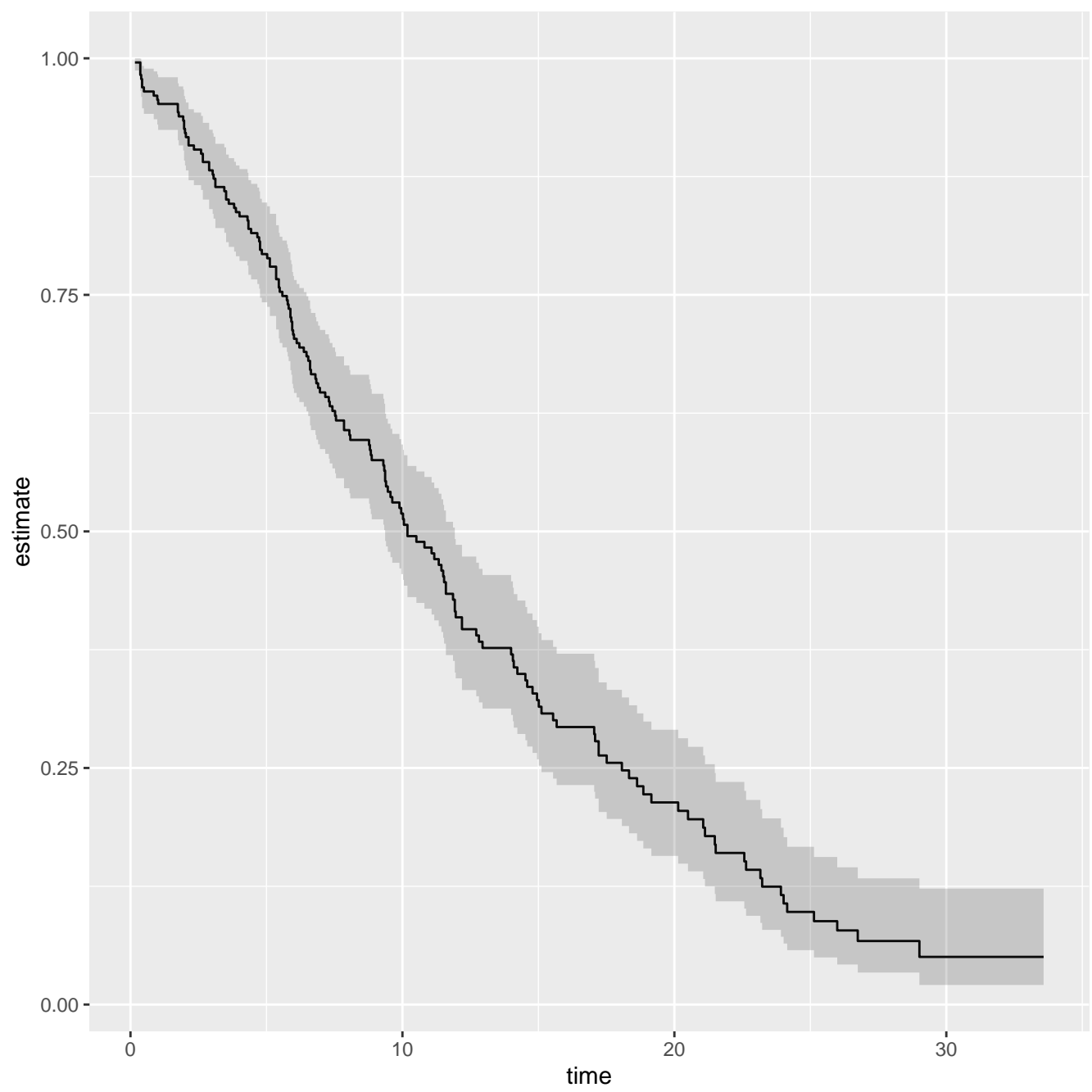
	0	10	20	30
At Risk	228	87	24	3
Events	0	103	148	165

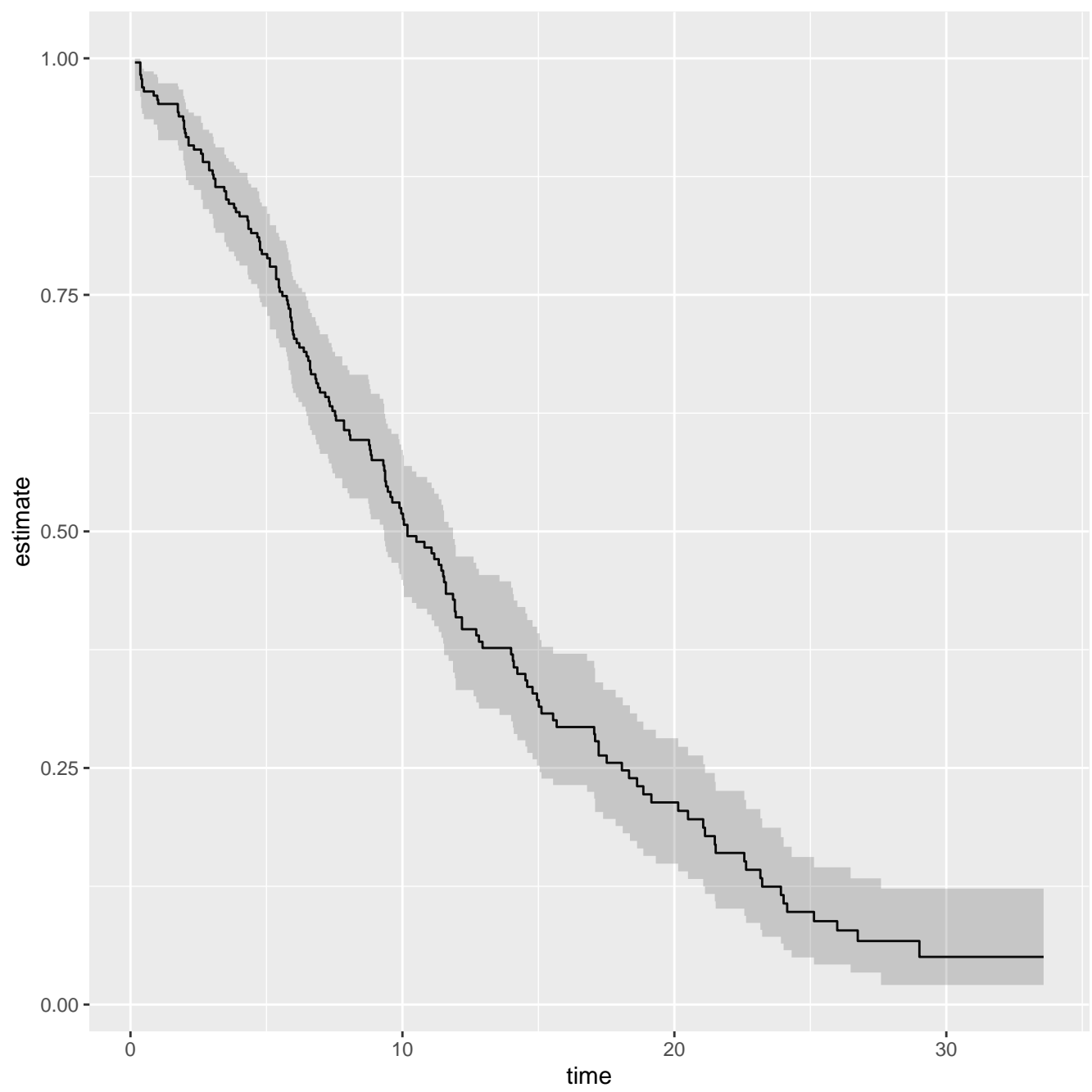


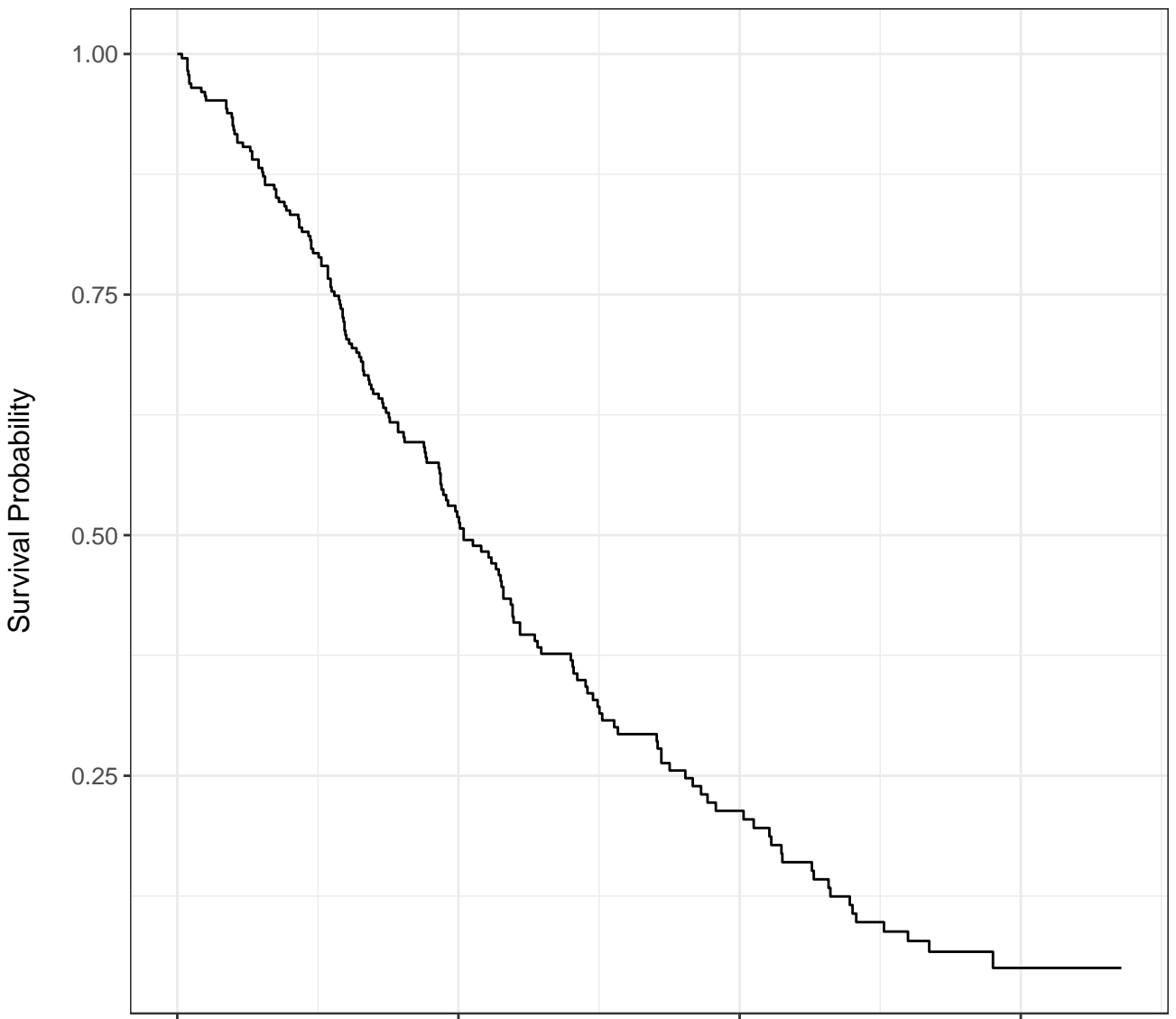




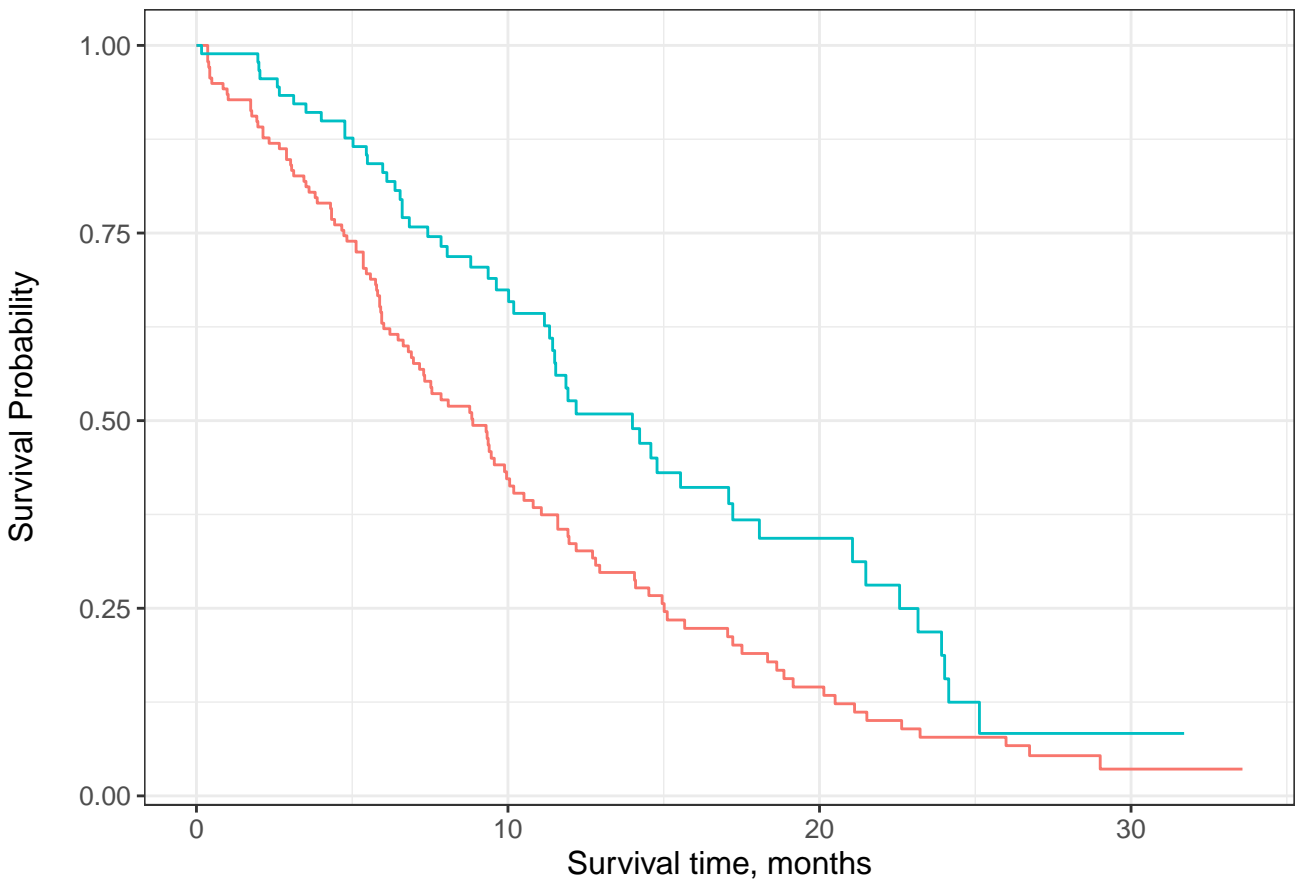








	0	10	20	30
At Risk	228	87	24	3
Events	0	103	148	165



— Male — Female

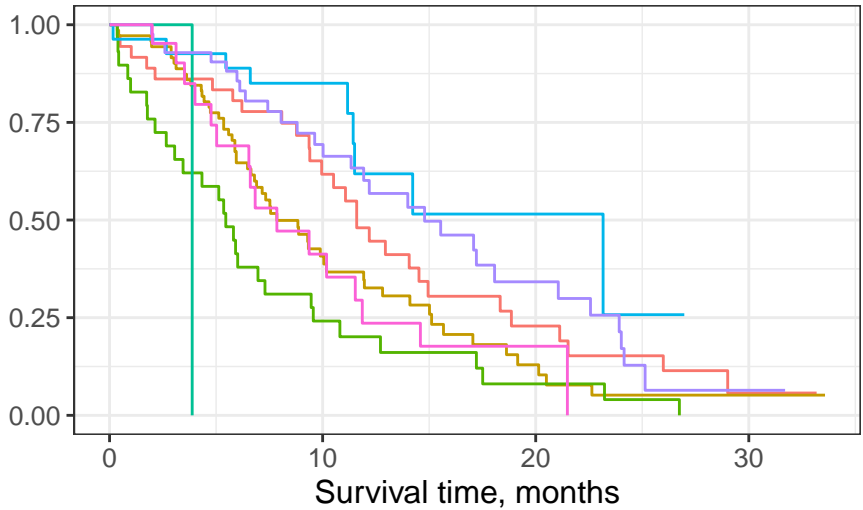
Male

At Risk	138	44	13	2
Events	0	76	103	112

Female

At Risk	90	43	11	1
Events	0	27	45	53

Survival Probability



Male, Asymptomatic

Male, In bed <50% of the day

Female, Asymptomatic

Male, Symptomatic and ambulatory

Male, In bed >50% of the day

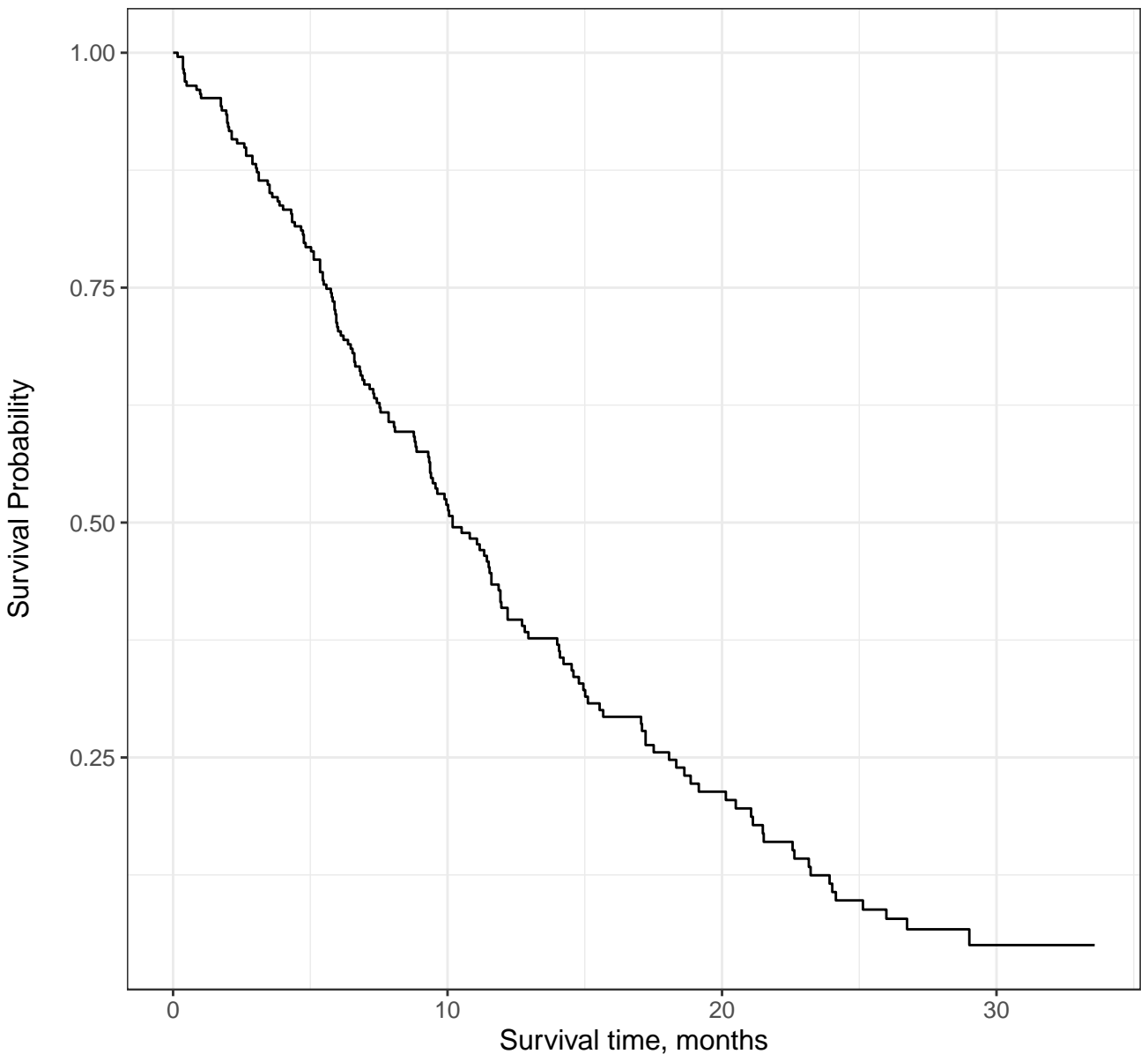
Female, Symptomatic and ambulatory

At Risk

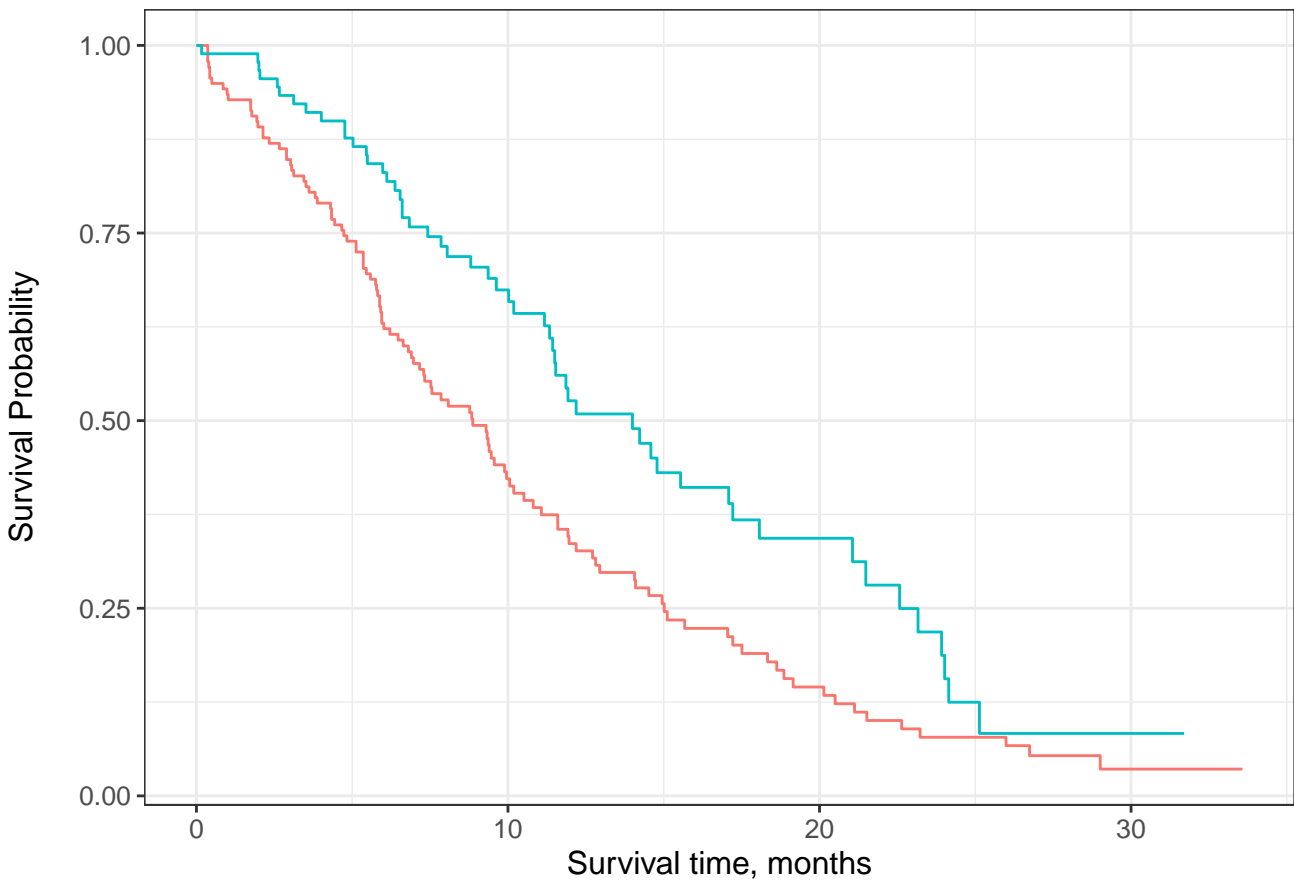
Male, Asymptomatic	36	18	6	1
Male, Symptomatic and ambulatory	71	20	5	1
Male, In bed <50% of the day	29	6	2	0
Male, In bed >50% of the day	1	0	0	0
Female, Asymptomatic	27	13	2	0
Female, Symptomatic and ambulatory	42	23	8	1
Female, In bed <50% of the day	21	7	1	0

Events

Male, Asymptomatic	0	13	24	28
Male, Symptomatic and ambulatory	0	39	51	54
Male, In bed <50% of the day	0	22	26	28
Male, In bed >50% of the day	0	1	1	1
Female, Asymptomatic	0	4	8	9
Female, Symptomatic and ambulatory	0	12	22	28
Female, In bed <50% of the day	0	11	15	16



At Risk	228	87	24	3
Events	0	103	148	165



— Male — Female

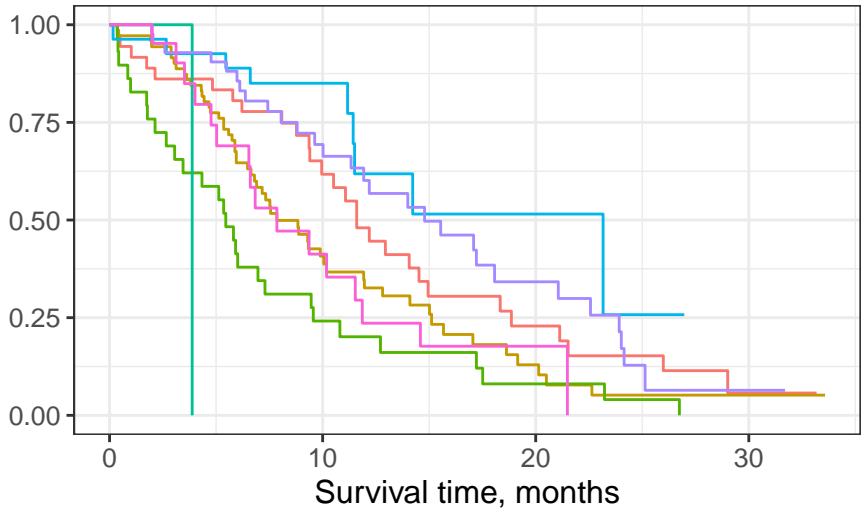
Male

At Risk	138	44	13	2
Events	0	76	103	112

Female

At Risk	90	43	11	1
Events	0	27	45	53

Survival Probability



Male, Asymptomatic Male, In bed <50% of the day Female, Asymptomatic
 Male, Symptomatic and ambulatory Male, In bed > 50% of the day Female, Symptomatic and ambulatory

At Risk

Male, Asymptomatic	36	18	6	1
Male, Symptomatic and ambulatory	71	20	5	1
Male, In bed <50% of the day	29	6	2	0
Male, In bed > 50% of the day	1	0	0	0
Female, Asymptomatic	27	13	2	0
Female, Symptomatic and ambulatory	42	23	8	1
Female, In bed <50% of the day	21	7	1	0

Events

Male, Asymptomatic	0	13	24	28
Male, Symptomatic and ambulatory	0	39	51	54
Male, In bed <50% of the day	0	22	26	28
Male, In bed > 50% of the day	0	1	1	1
Female, Asymptomatic	0	4	8	9
Female, Symptomatic and ambulatory	0	12	22	28
Female, In bed <50% of the day	0	11	15	16