

Asymptomatic

Male, In bed <50% of the day

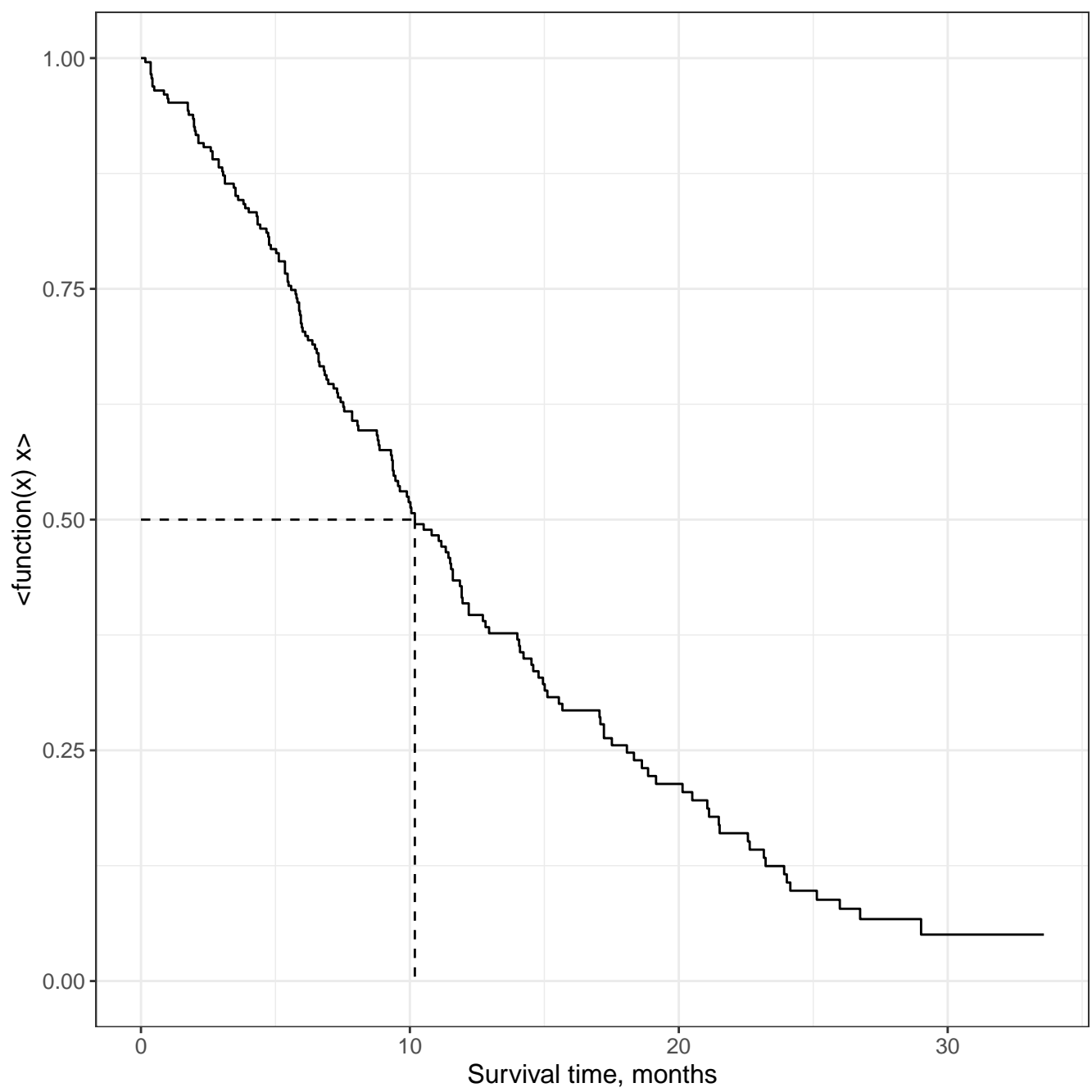
Female, Asymptomatic

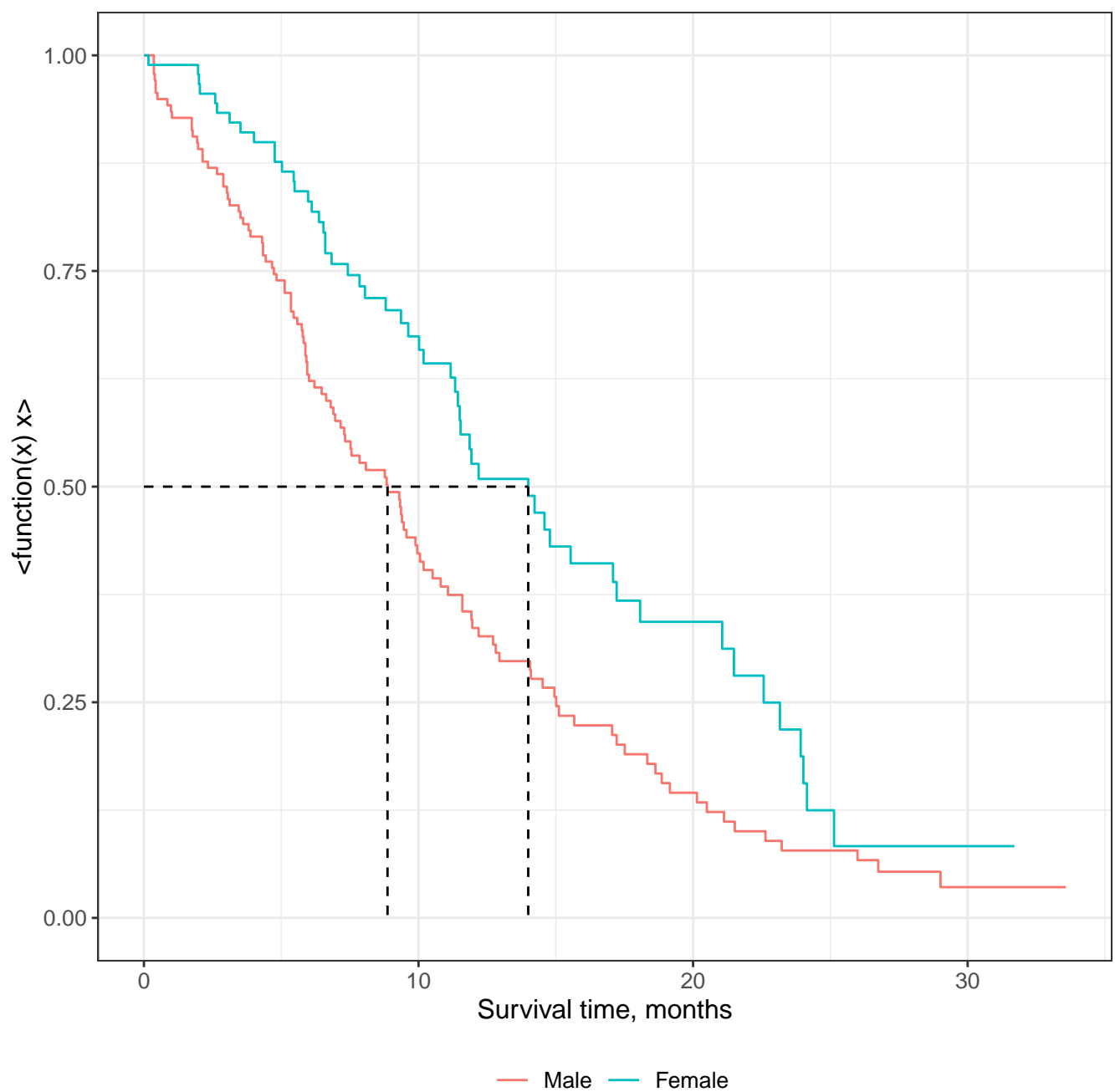
Female, Asymptomatic and ambulatory

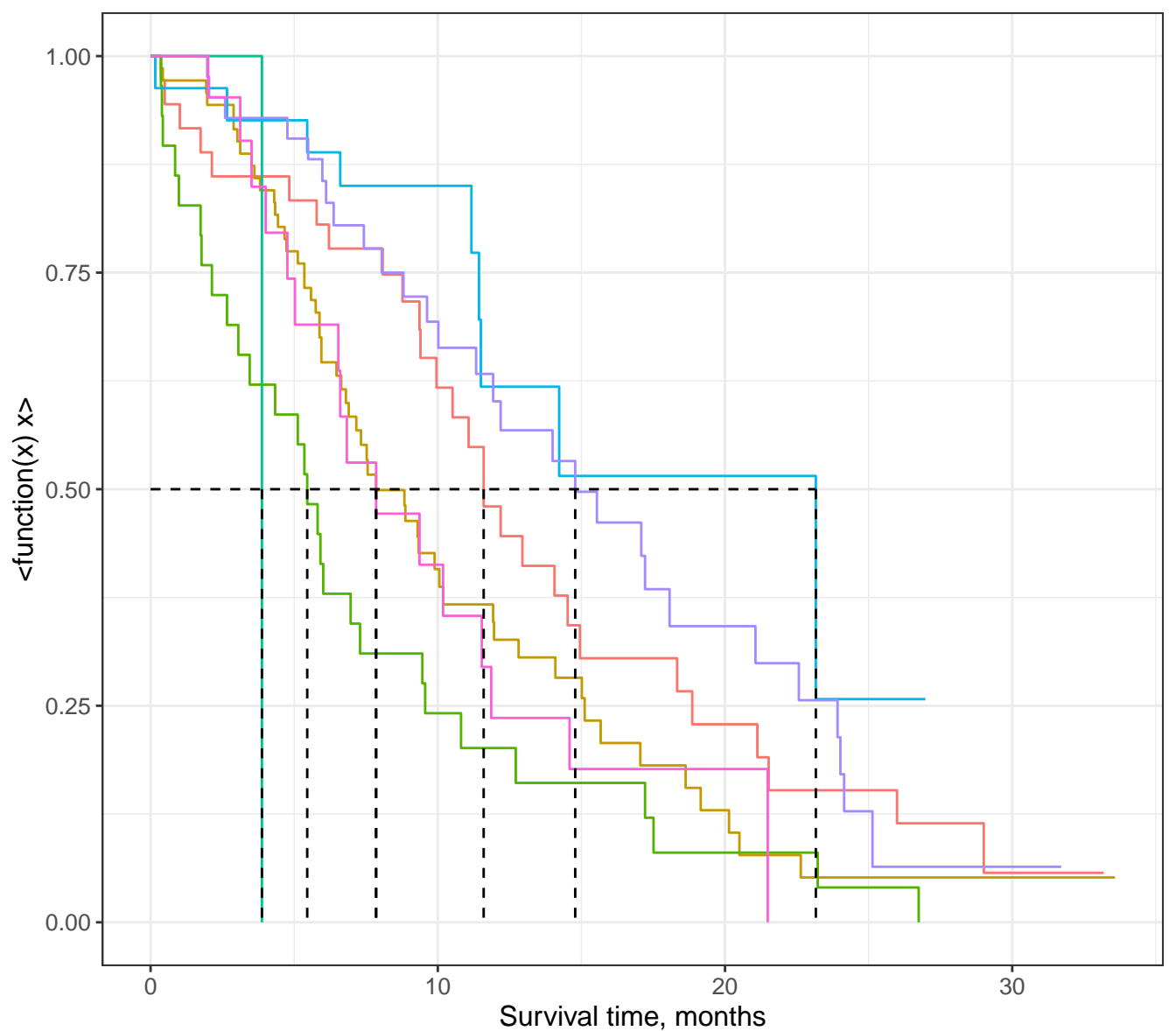
Asymptomatic and ambulatory

Male, In bed > 50% of the day

Female, Symptomatic and ambulatory







Asymptomatic

Male, In bed <50% of the day

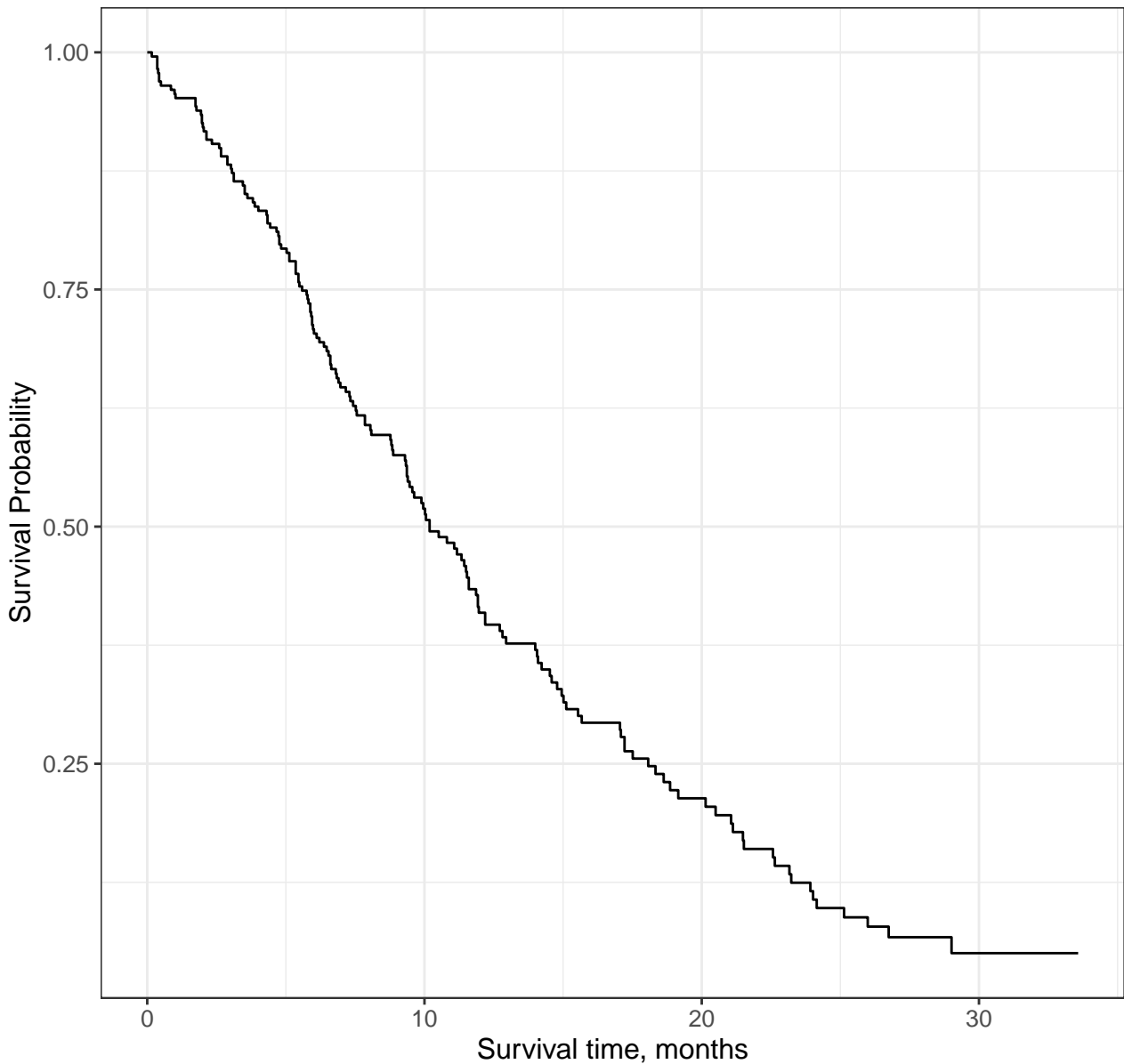
Female, Asymptomatic

Female, Symptomatic and ambulatory

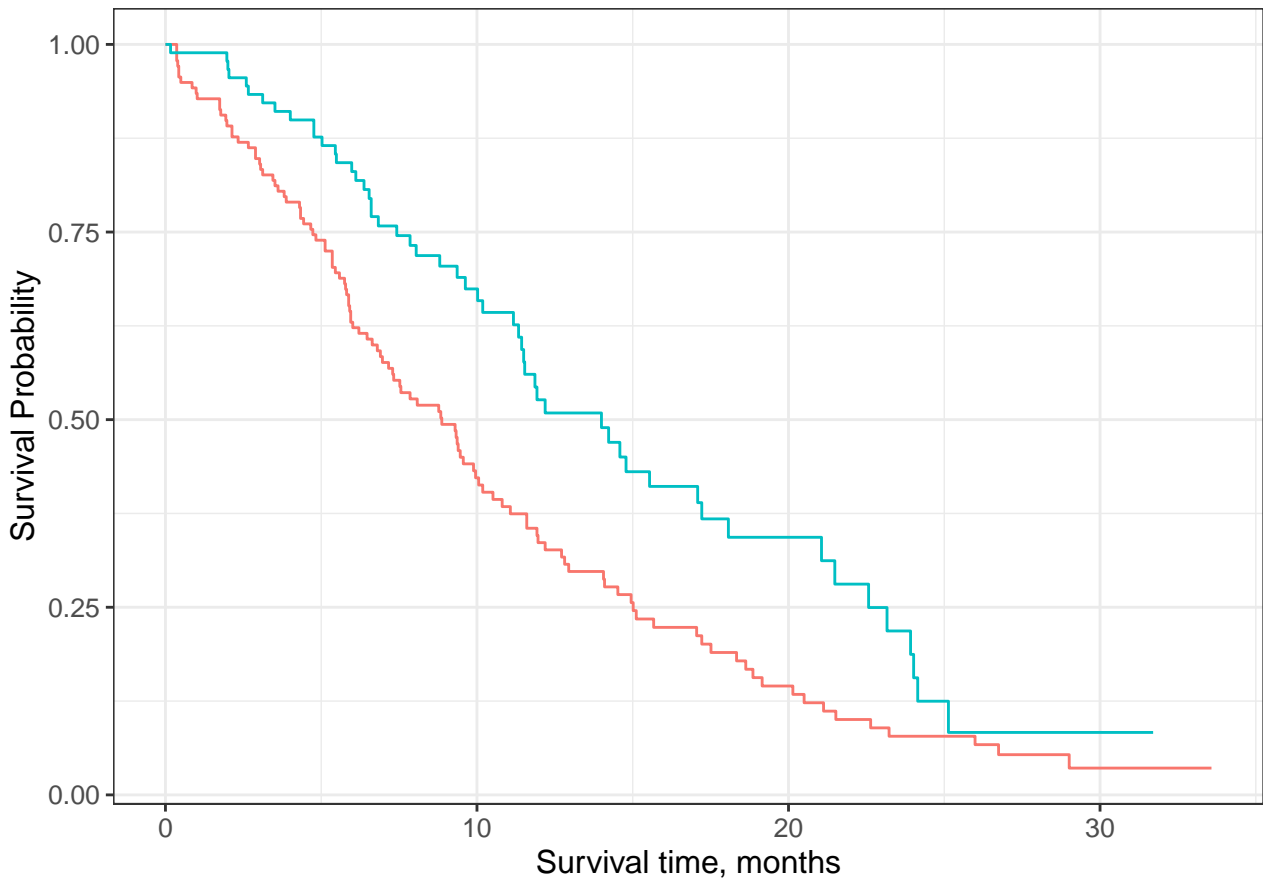
Asymptomatic and ambulatory

Male, In bed >50% of the day

Female, Symptomatic and ambulatory



At Risk	228	87	24	3
Events	0	103	148	165



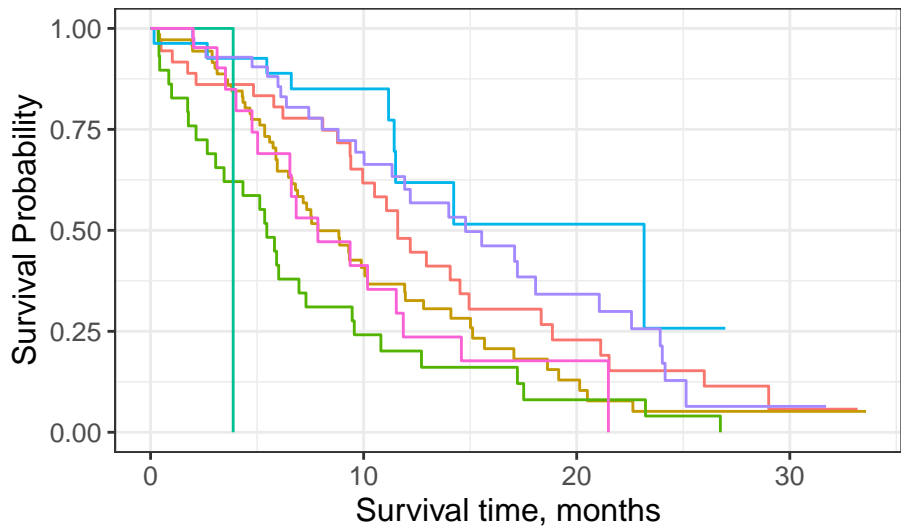
— Male — Female

Male

At Risk	138	44	13	2
Events	0	76	103	112

Female

At Risk	90	43	11	1
Events	0	27	45	53



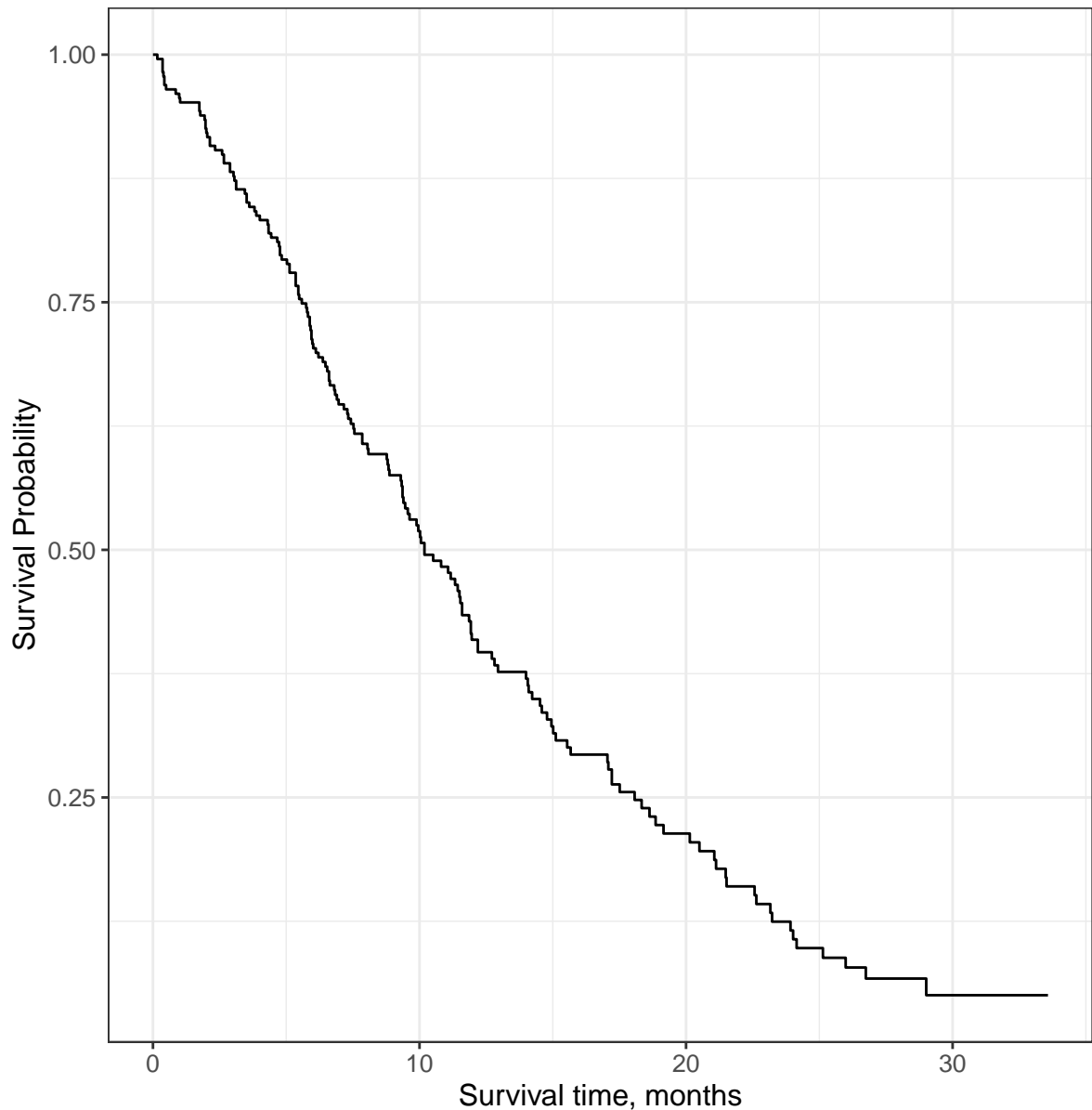
— Male, Asymptomatic
 — Male, In bed <50% of the day
 — Female, Asymptomatic
— Male, Symptomatic and ambulatory
 — Male, In bed > 50% of the day
 — Female, Symptomatic and ambulatory

At Risk

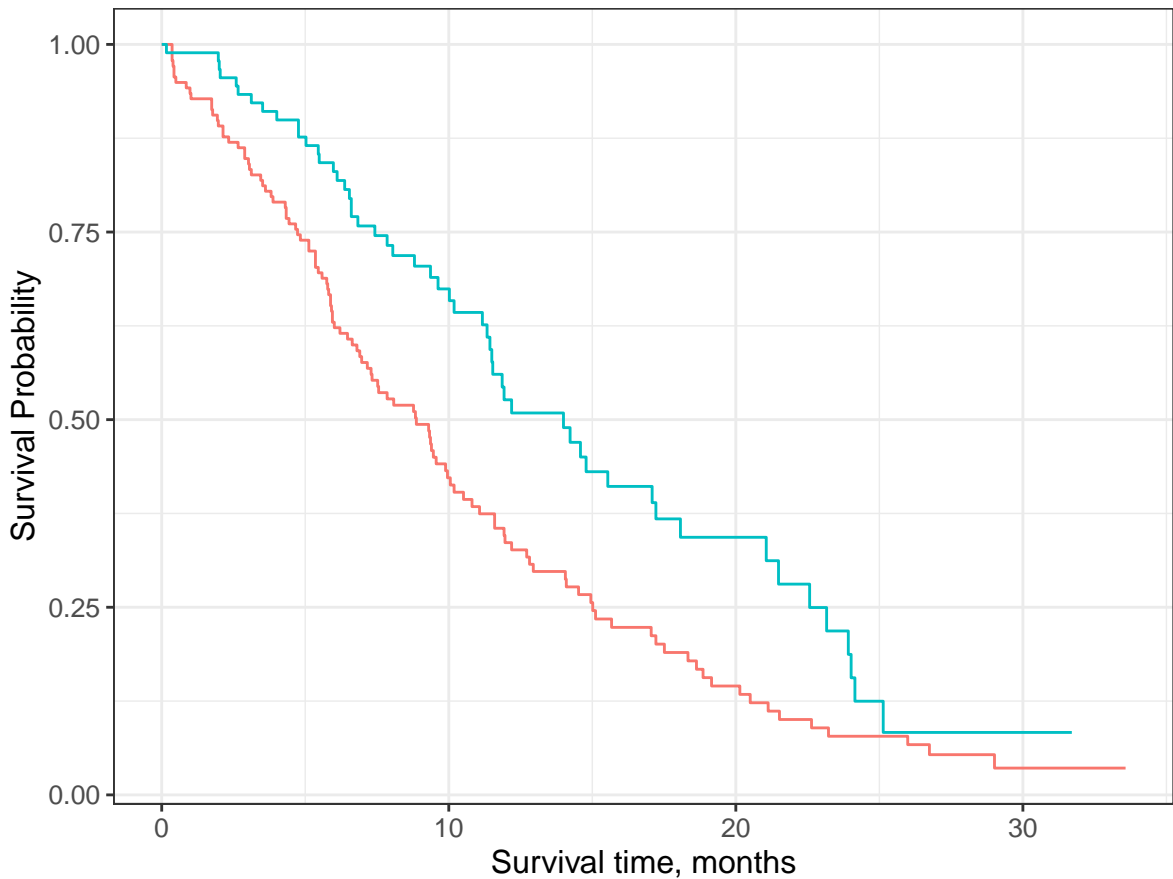
Male, Asymptomatic	36	18	6	1
Male, Symptomatic and ambulatory	71	20	5	1
Male, In bed <50% of the day	29	6	2	0
Male, In bed > 50% of the day	1	0	0	0
Female, Asymptomatic	27	13	2	0
Female, Symptomatic and ambulatory	42	23	8	1
Female, In bed <50% of the day	21	7	1	0

Events

Male, Asymptomatic	0	13	24	28
Male, Symptomatic and ambulatory	0	39	51	54
Male, In bed <50% of the day	0	22	26	28
Male, In bed > 50% of the day	0	1	1	1
Female, Asymptomatic	0	4	8	9
Female, Symptomatic and ambulatory	0	12	22	28
Female, In bed <50% of the day	0	11	15	16



At Risk	228	87	24	3
CUM EVENTS	0	103	148	165



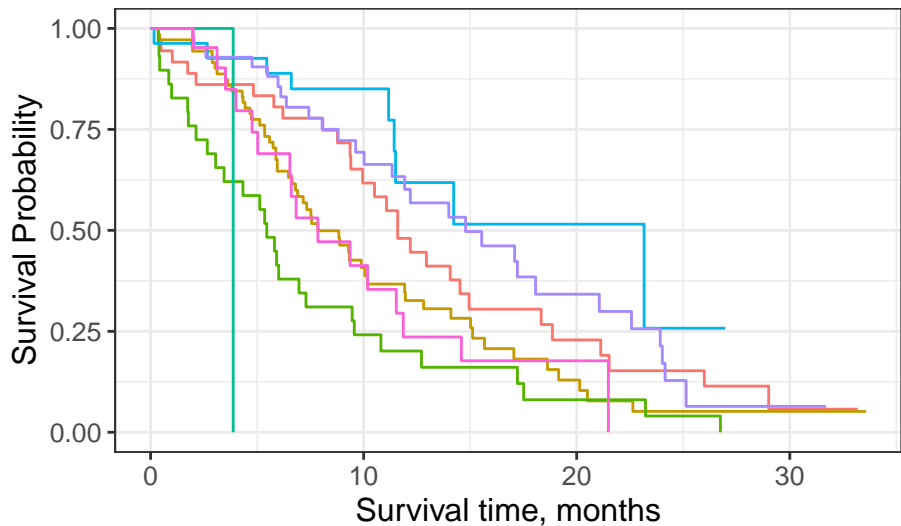
— Male — Female

Male

At Risk	138	44	13	2
CUM EVENTS	0	76	103	112

Female

At Risk	90	43	11	1
CUM EVENTS	0	27	45	53



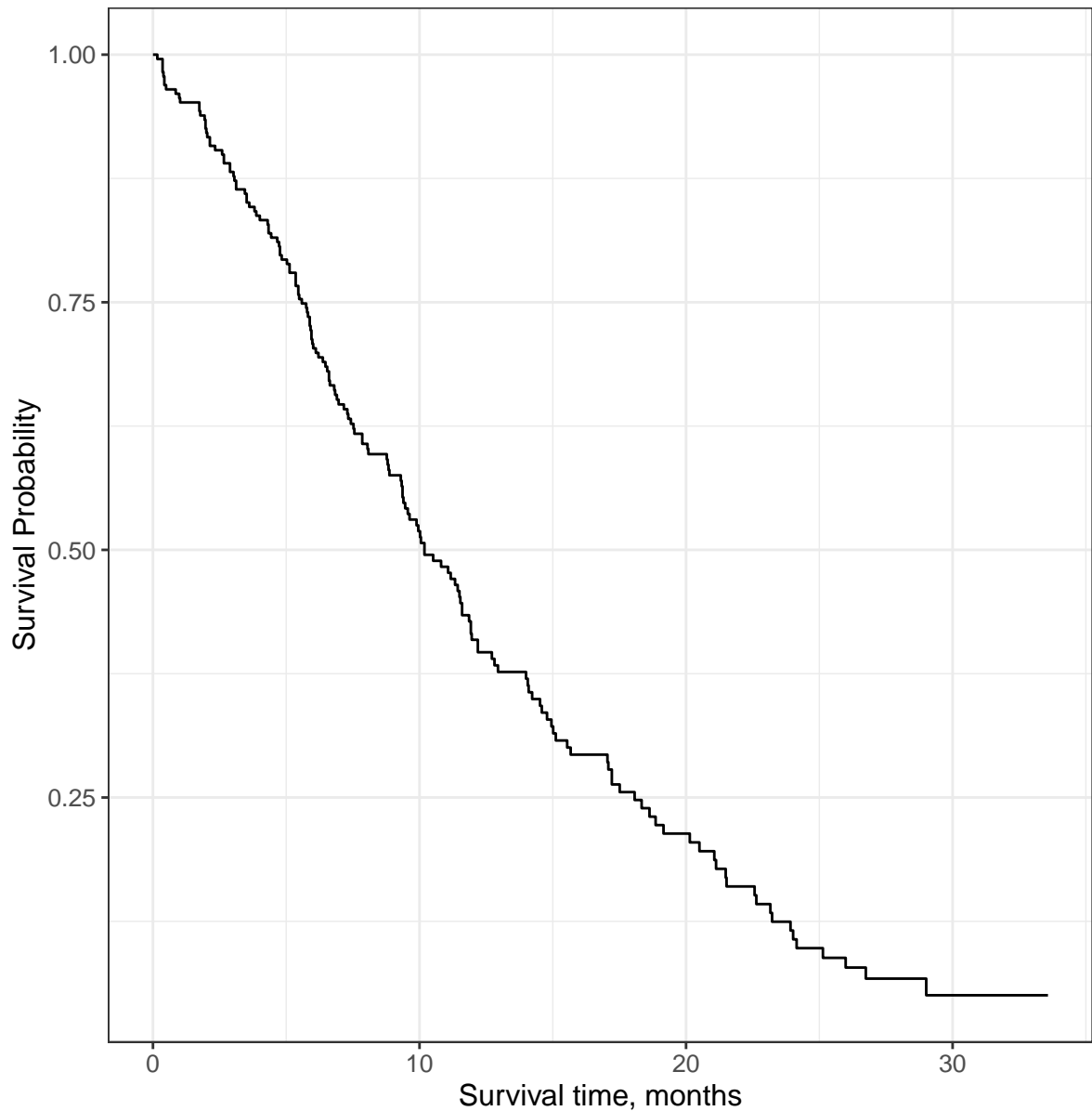
— Male, Asymptomatic
 — Male, In bed <50% of the day
 — Female, Asymptomatic
— Male, Symptomatic and ambulatory
 — Male, In bed > 50% of the day
 — Female, Symptomatic and ambulatory

At Risk

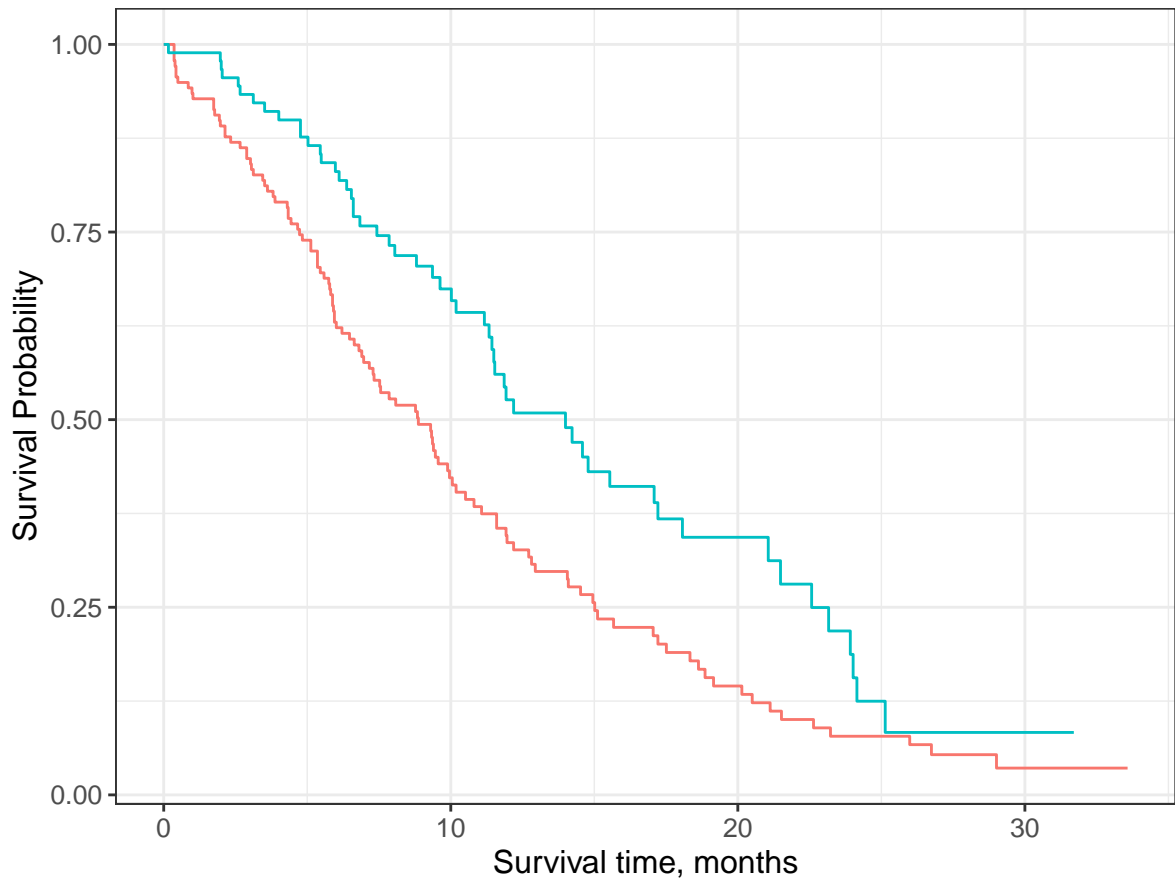
Male, Asymptomatic	36	18	6	1
Male, Symptomatic and ambulatory	71	20	5	1
Male, In bed <50% of the day	29	6	2	0
Male, In bed > 50% of the day	1	0	0	0
Female, Asymptomatic	27	13	2	0
Female, Symptomatic and ambulatory	42	23	8	1
Female, In bed <50% of the day	21	7	1	0

CUM EVENTS

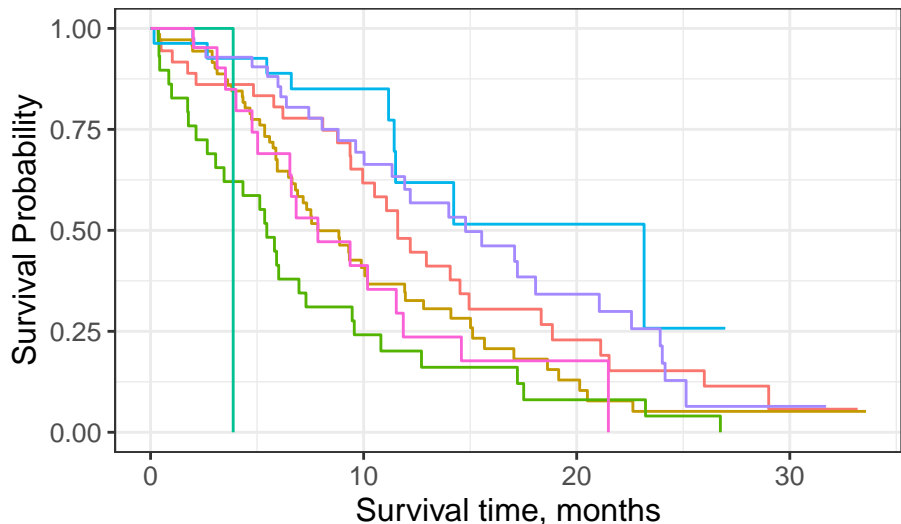
Male, Asymptomatic	0	13	24	28
Male, Symptomatic and ambulatory	0	39	51	54
Male, In bed <50% of the day	0	22	26	28
Male, In bed > 50% of the day	0	1	1	1
Female, Asymptomatic	0	4	8	9
Female, Symptomatic and ambulatory	0	12	22	28
Female, In bed <50% of the day	0	11	15	16



N RISK	228	87	24	3
CUM EVENTS	0	103	148	165



		Male		Female	
	N RISK	138	44	13	2
	CUM EVENTS	0	76	103	112
	N RISK	90	43	11	1
	CUM EVENTS	0	27	45	53



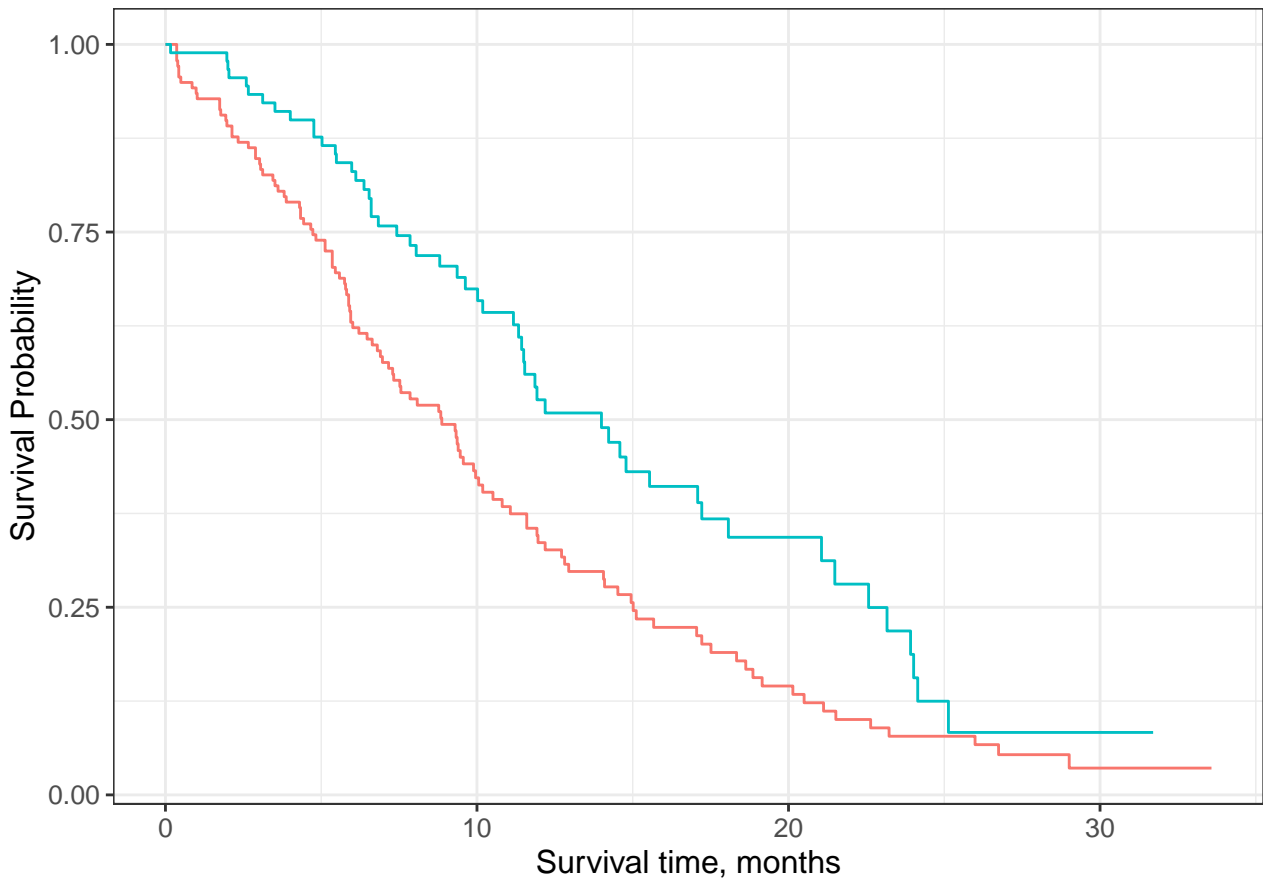
— Male, Asymptomatic
 — Male, In bed <50% of the day
 — Female, Asymptomatic
— Male, Symptomatic and ambulatory
 — Male, In bed > 50% of the day
 — Female, Symptomatic and ambulatory

N RISK

Male, Asymptomatic	36	18	6	1
Male, Symptomatic and ambulatory	71	20	5	1
Male, In bed <50% of the day	29	6	2	0
Male, In bed > 50% of the day	1	0	0	0
Female, Asymptomatic	27	13	2	0
Female, Symptomatic and ambulatory	42	23	8	1
Female, In bed <50% of the day	21	7	1	0

CUM EVENTS

Male, Asymptomatic	0	13	24	28
Male, Symptomatic and ambulatory	0	39	51	54
Male, In bed <50% of the day	0	22	26	28
Male, In bed > 50% of the day	0	1	1	1
Female, Asymptomatic	0	4	8	9
Female, Symptomatic and ambulatory	0	12	22	28
Female, In bed <50% of the day	0	11	15	16



— Male — Female

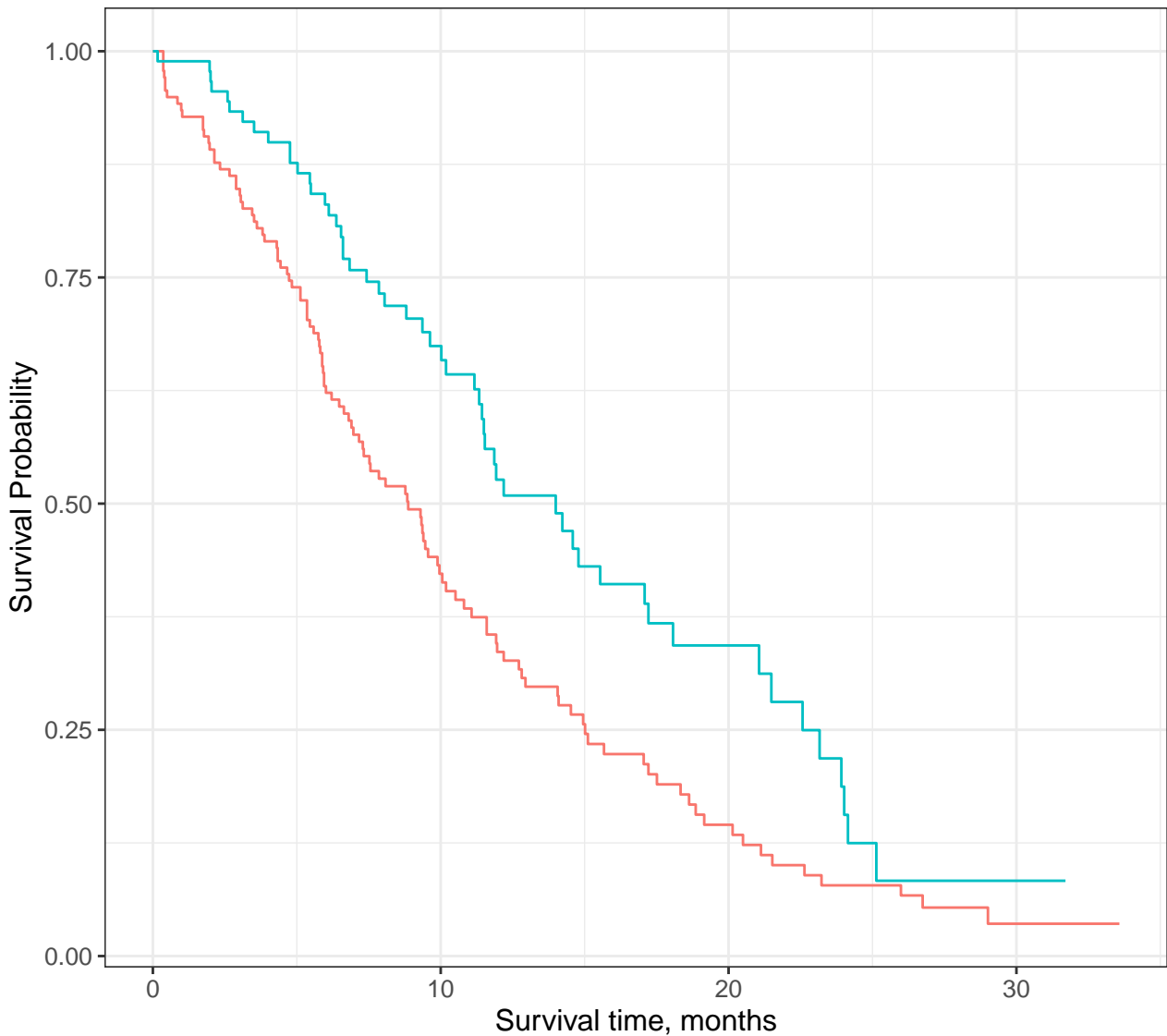
Male

At Risk	138	44	13	2
Events	0	76	103	112

Female

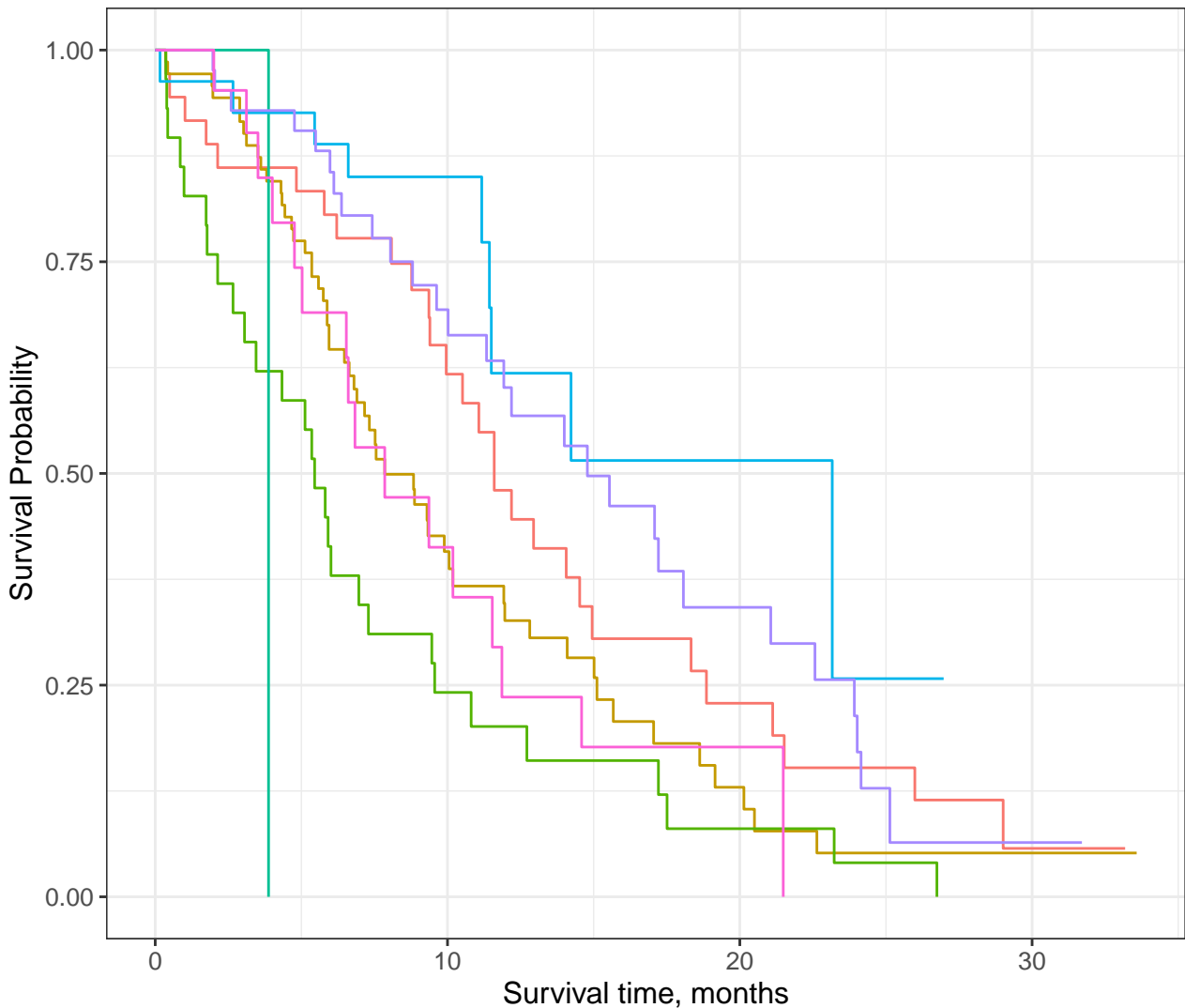
At Risk	90	43	11	1
Events	0	27	45	53

		Survival time, months			
		0	15	30	45
		Male, In bed <50% of the day		Female, Asymptomatic	
		Male, Asymptomatic		Female, Symptomatic and ambulatory	
At Risk	36	18	6	1	
Events	0	13	24	28	
Male, Symptomatic and ambulatory					
At Risk	71	20	5	1	
Events	0	39	51	54	
Male, In bed <50% of the day					
At Risk	29	6	2	0	
Events	0	22	26	28	
Male, In bed > 50% of the day					
At Risk	1	0	0	0	
Events	0	1	1	1	
Female, Asymptomatic					
At Risk	27	13	2	0	
Events	0	4	8	9	
Female, Symptomatic and ambulatory					
At Risk	42	23	8	1	
Events	0	12	22	28	
Female, In bed <50% of the day					
At Risk	21	7	1	0	
Events	0	11	15	16	

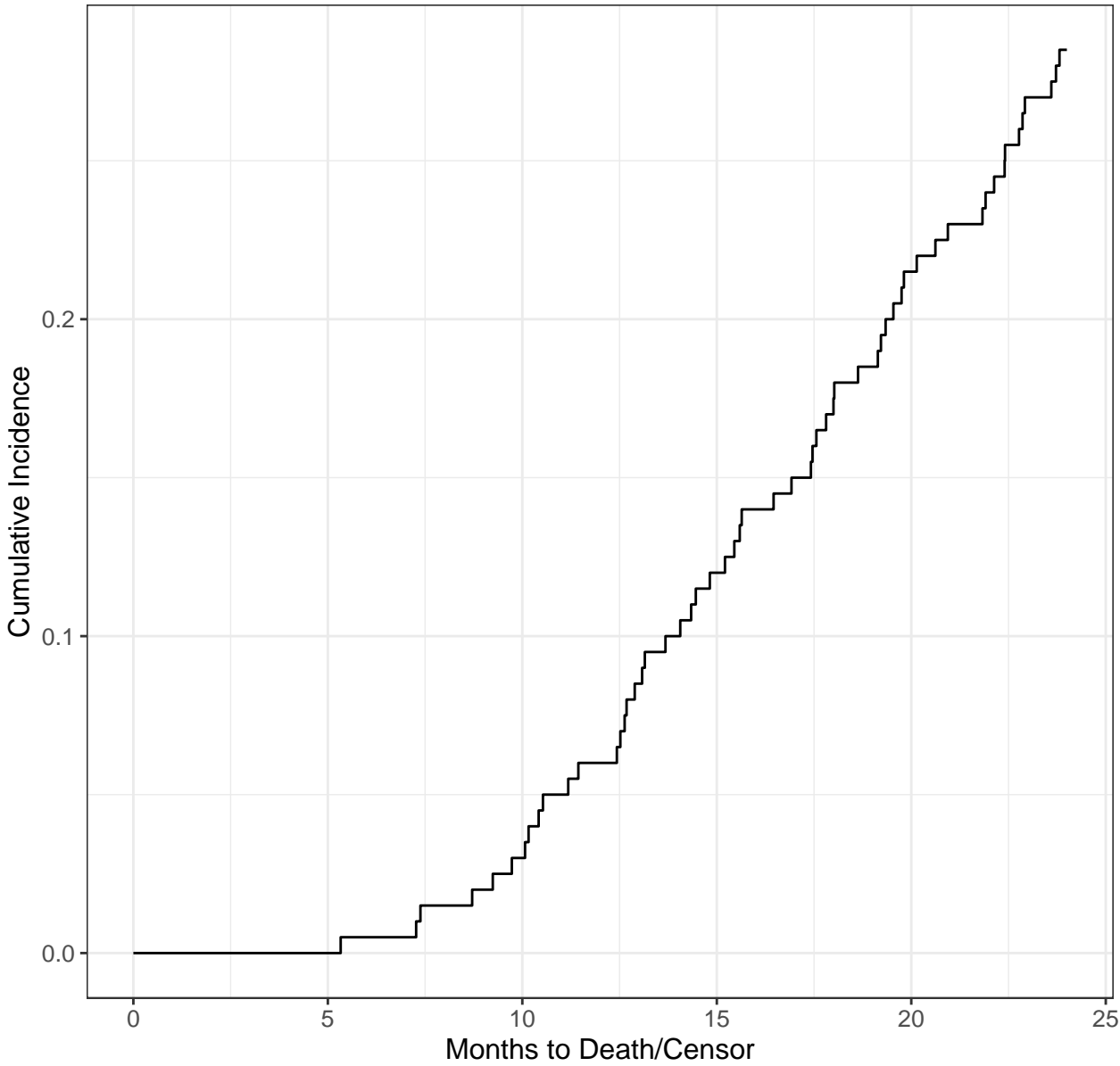


— Male — Female

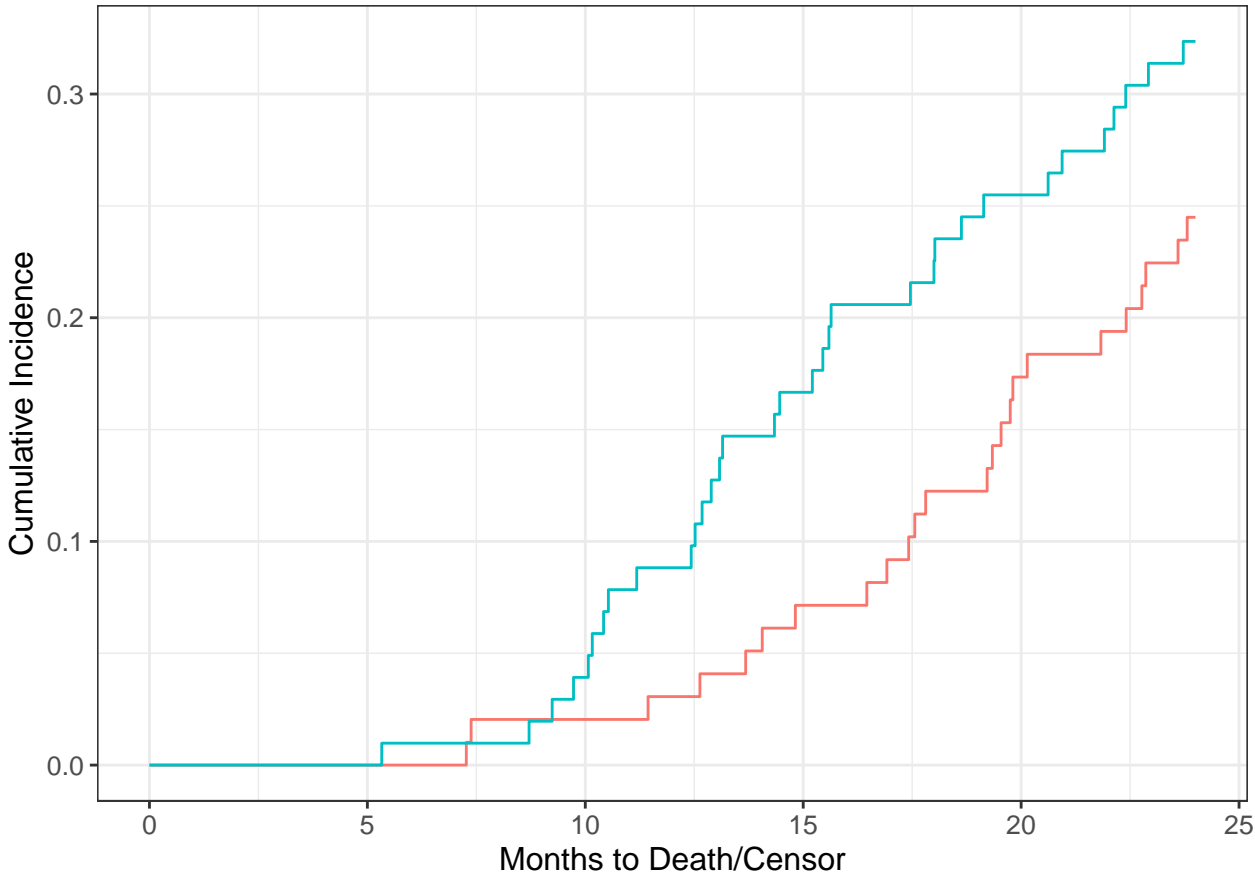
At Risk	228	87	24	3
Events	0	103	148	165



	Male, In bed <50% of the day	Male, In bed > 50% of the day	Female, Asymptomatic	Female, Symptomatic and ambulatory	Female, Asymptomatic	Female, Symptomatic and ambulatory
At Risk	227	87	24	3	147	218
Events	0	102	147	218		



At Risk	200	199	189	158	116	0
Events	0	0	6	24	43	57



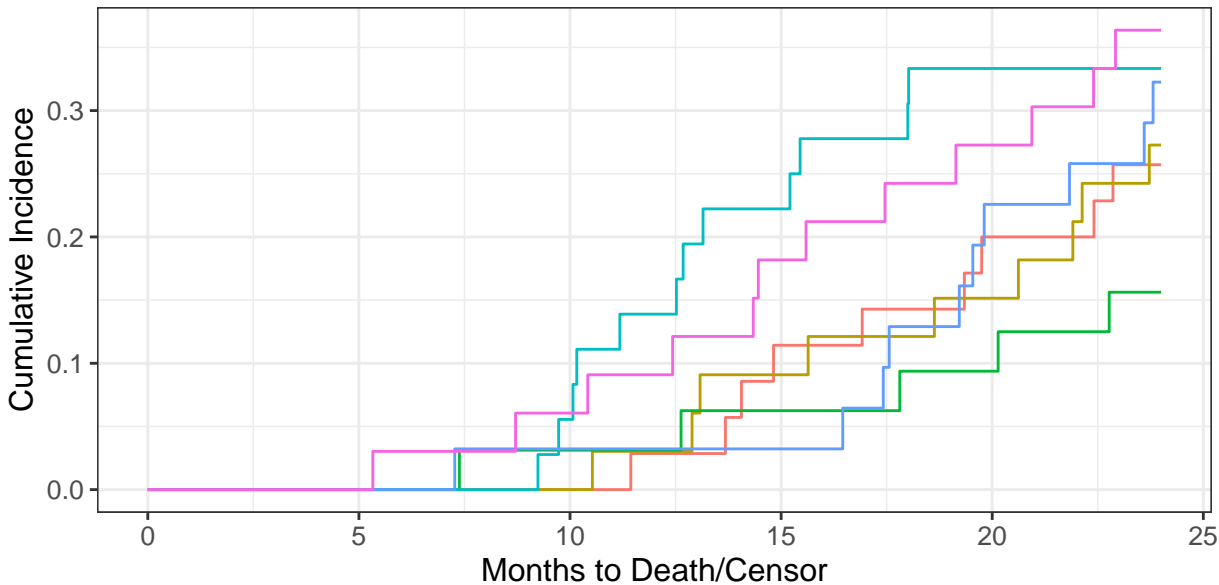
— Drug A — Drug B

Drug A

At Risk	98	97	94	83	61	0
Events	0	0	2	7	17	24

Drug B

At Risk	102	102	95	75	55	0
Events	0	0	4	17	26	33



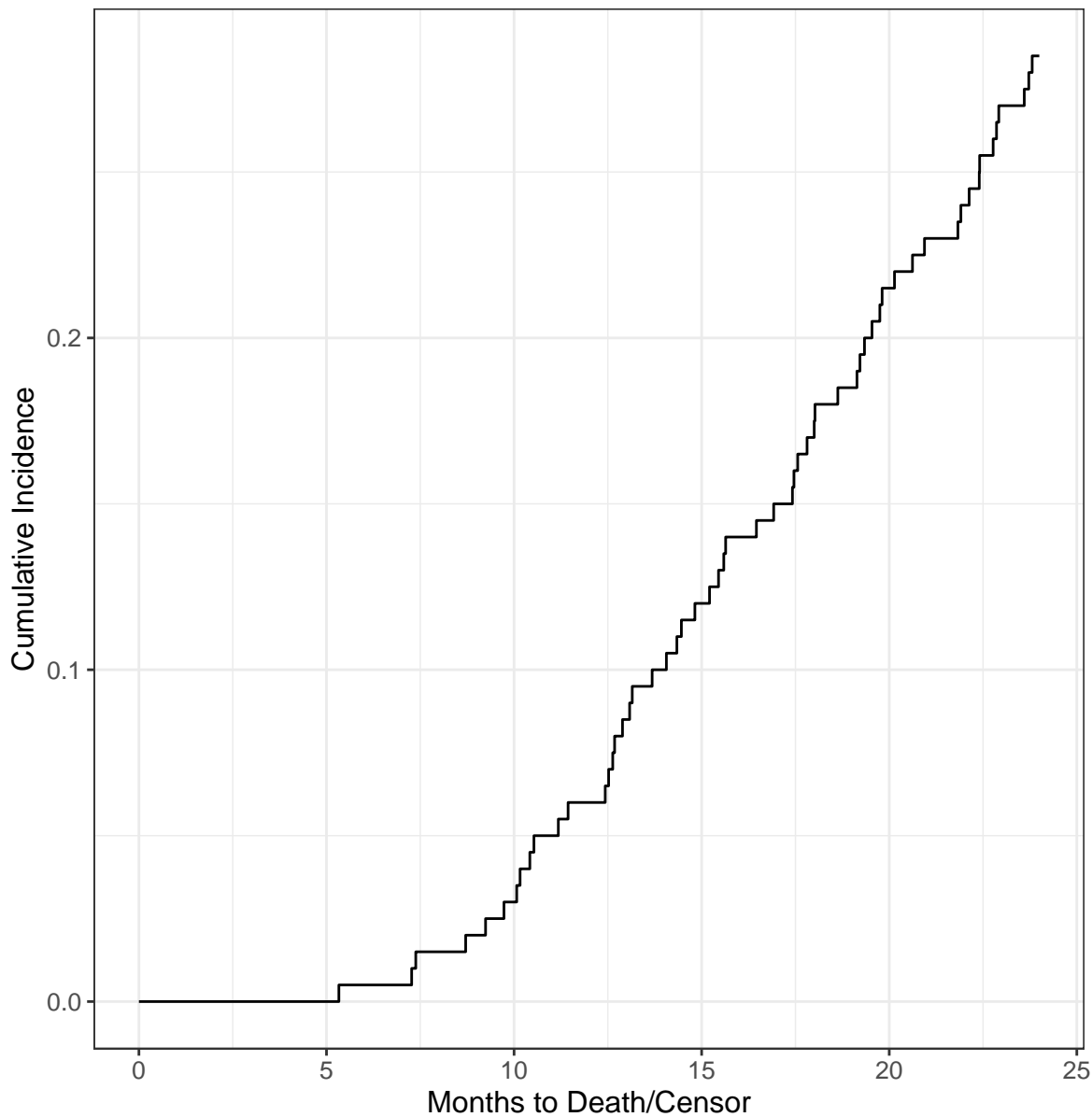
— Drug A, I — Drug A, II — Drug A, III
— Drug B, I — Drug B, II — Drug B, III

At Risk

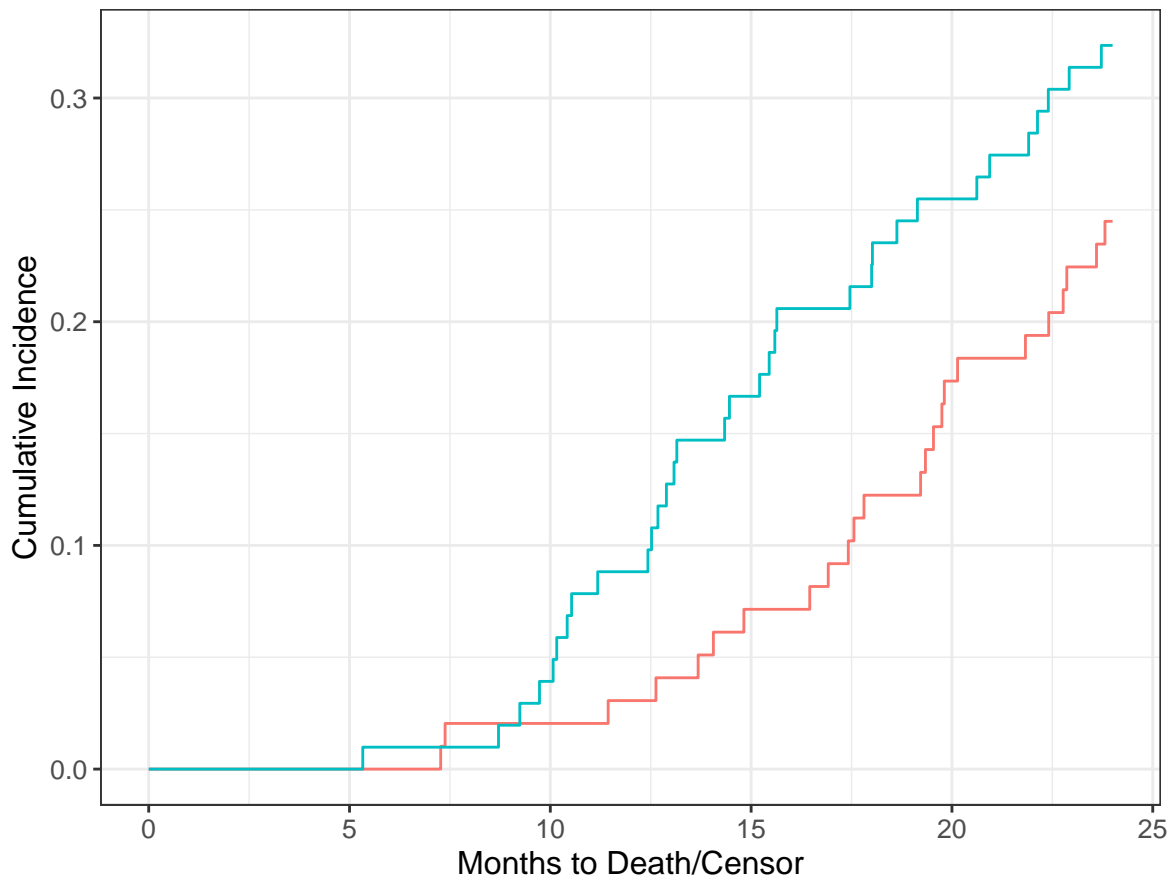
Drug A, I	35	35	35	30	22	0
Drug B, I	33	33	33	28	23	0
Drug A, II	32	32	30	27	23	0
Drug B, II	36	36	32	23	17	0
Drug A, III	31	30	29	26	16	0
Drug B, III	33	33	30	24	15	0

Events

Drug A, I	0	0	0	4	7	9
Drug B, I	0	0	0	3	5	9
Drug A, II	0	0	1	2	3	5
Drug B, II	0	0	2	8	12	12
Drug A, III	0	0	1	1	7	10
Drug B, III	0	0	2	6	9	12



At Risk	200	199	189	158	116	0
CUM EVENTS	0	0	6	24	43	57



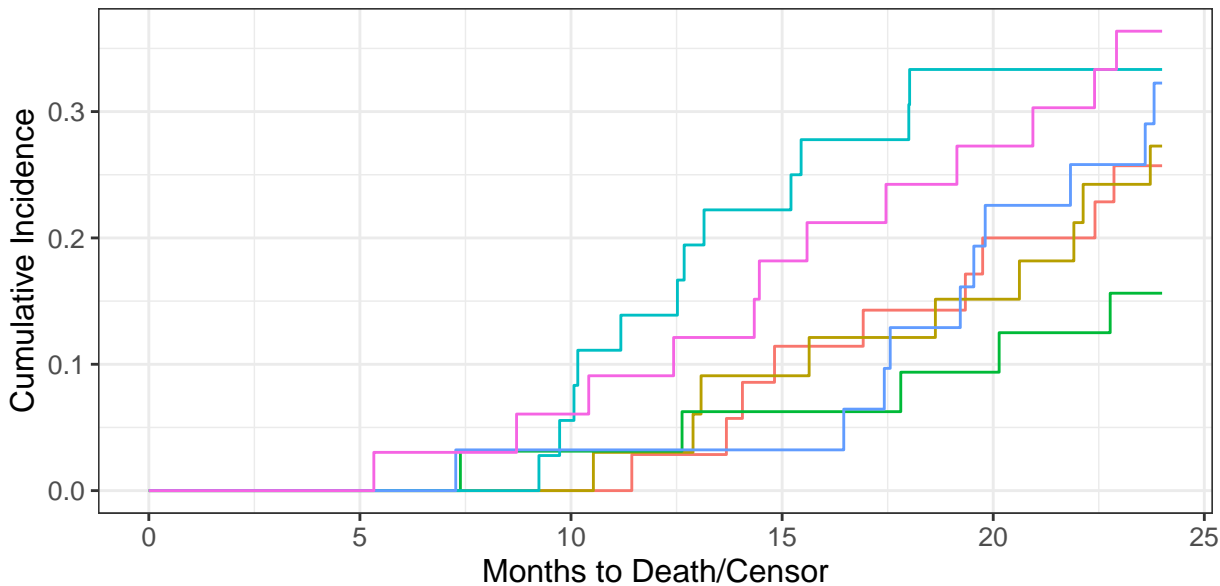
— Drug A — Drug B

Drug A

At Risk	98	97	94	83	61	0
CUM EVENTS	0	0	2	7	17	24

Drug B

At Risk	102	102	95	75	55	0
CUM EVENTS	0	0	4	17	26	33



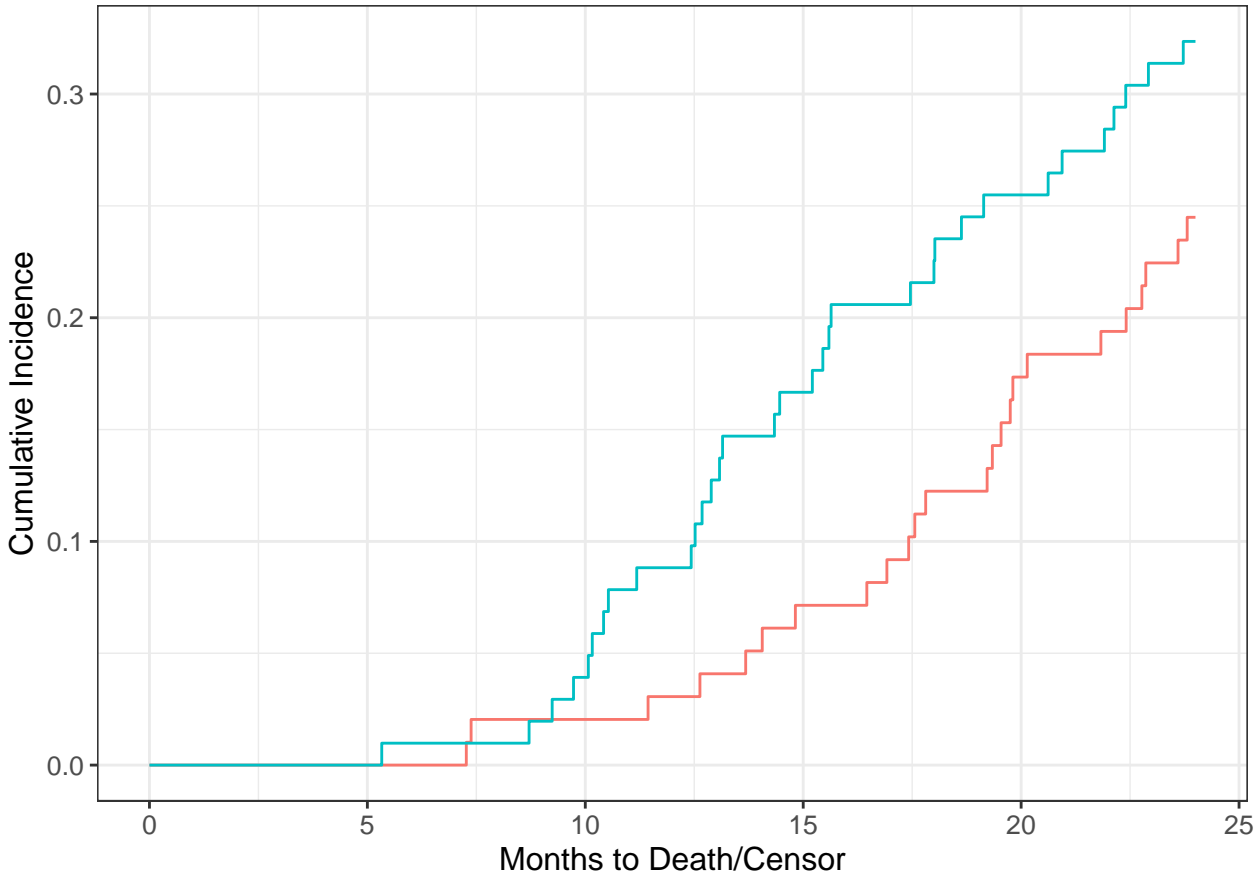
— Drug A, I — Drug A, II — Drug A, III
— Drug B, I — Drug B, II — Drug B, III

At Risk

Drug A, I	35	35	35	30	22	0
Drug B, I	33	33	33	28	23	0
Drug A, II	32	32	30	27	23	0
Drug B, II	36	36	32	23	17	0
Drug A, III	31	30	29	26	16	0
Drug B, III	33	33	30	24	15	0

CUM EVENTS

Drug A, I	0	0	0	4	7	9
Drug B, I	0	0	0	3	5	9
Drug A, II	0	0	1	2	3	5
Drug B, II	0	0	2	8	12	12
Drug A, III	0	0	1	1	7	10
Drug B, III	0	0	2	6	9	12



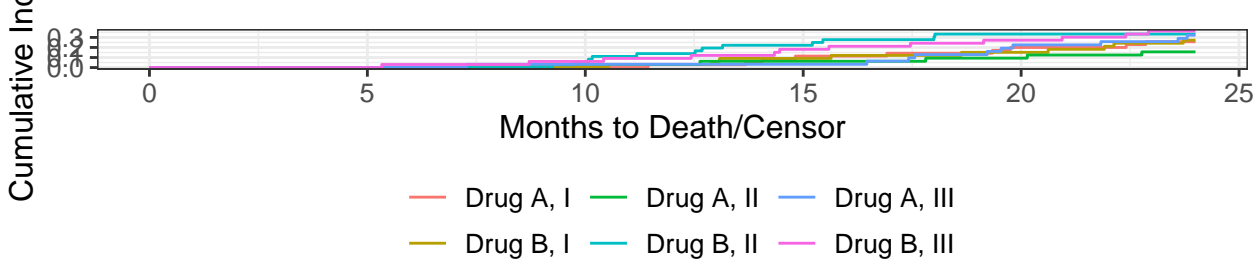
— Drug A — Drug B

Drug A

At Risk	98	97	94	83	61	0
Events	0	0	2	7	17	24

Drug B

At Risk	102	102	95	75	55	0
Events	0	0	4	17	26	33



Drug A, I

At Risk	35	35	35	30	22	0
Events	0	0	0	4	7	9

Drug B, I

At Risk	33	33	33	28	23	0
Events	0	0	0	3	5	9

Drug A, II

At Risk	32	32	30	27	23	0
Events	0	0	1	2	3	5

Drug B, II

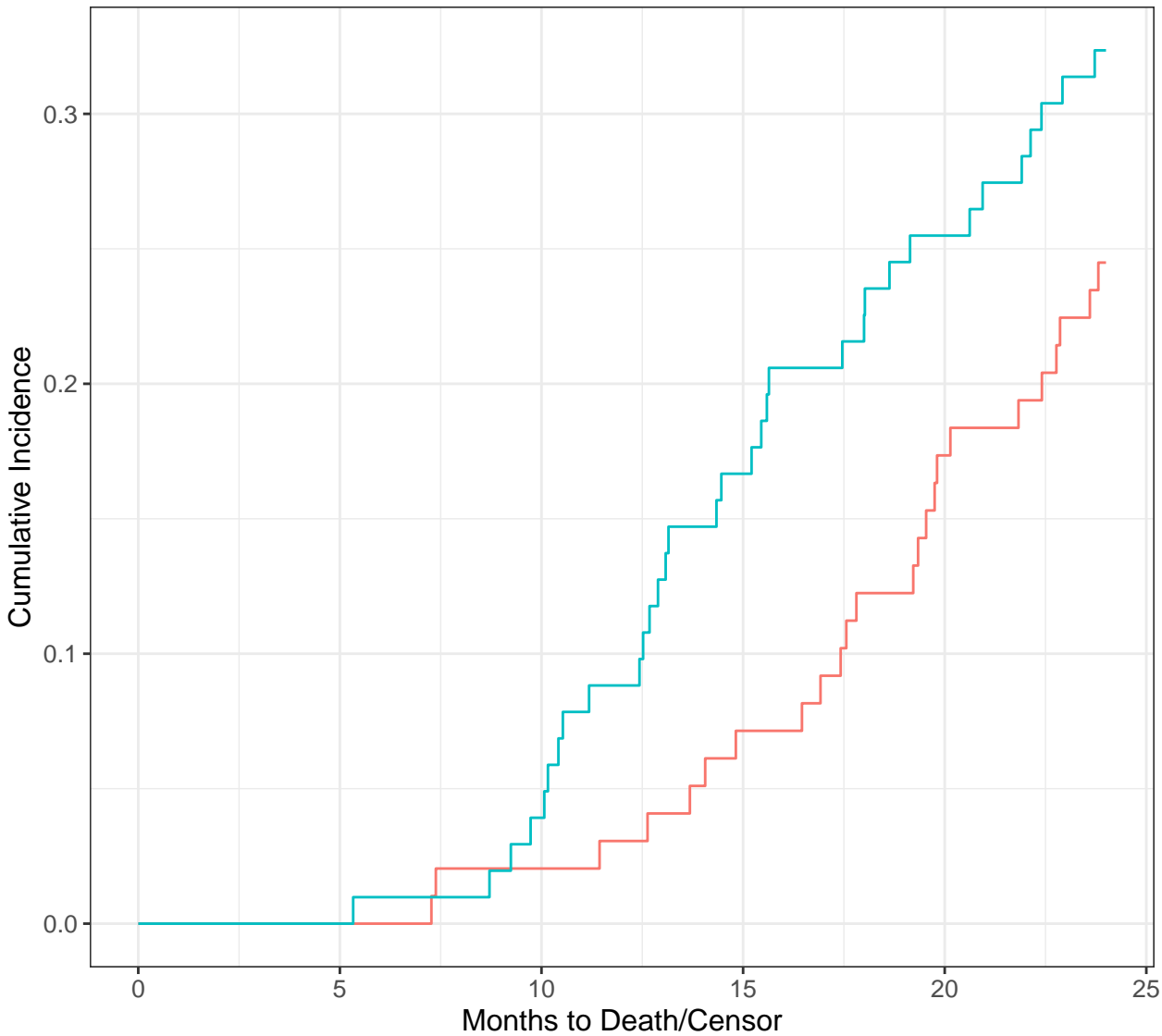
At Risk	36	36	32	23	17	0
Events	0	0	2	8	12	12

Drug A, III

At Risk	31	30	29	26	16	0
Events	0	0	1	1	7	10

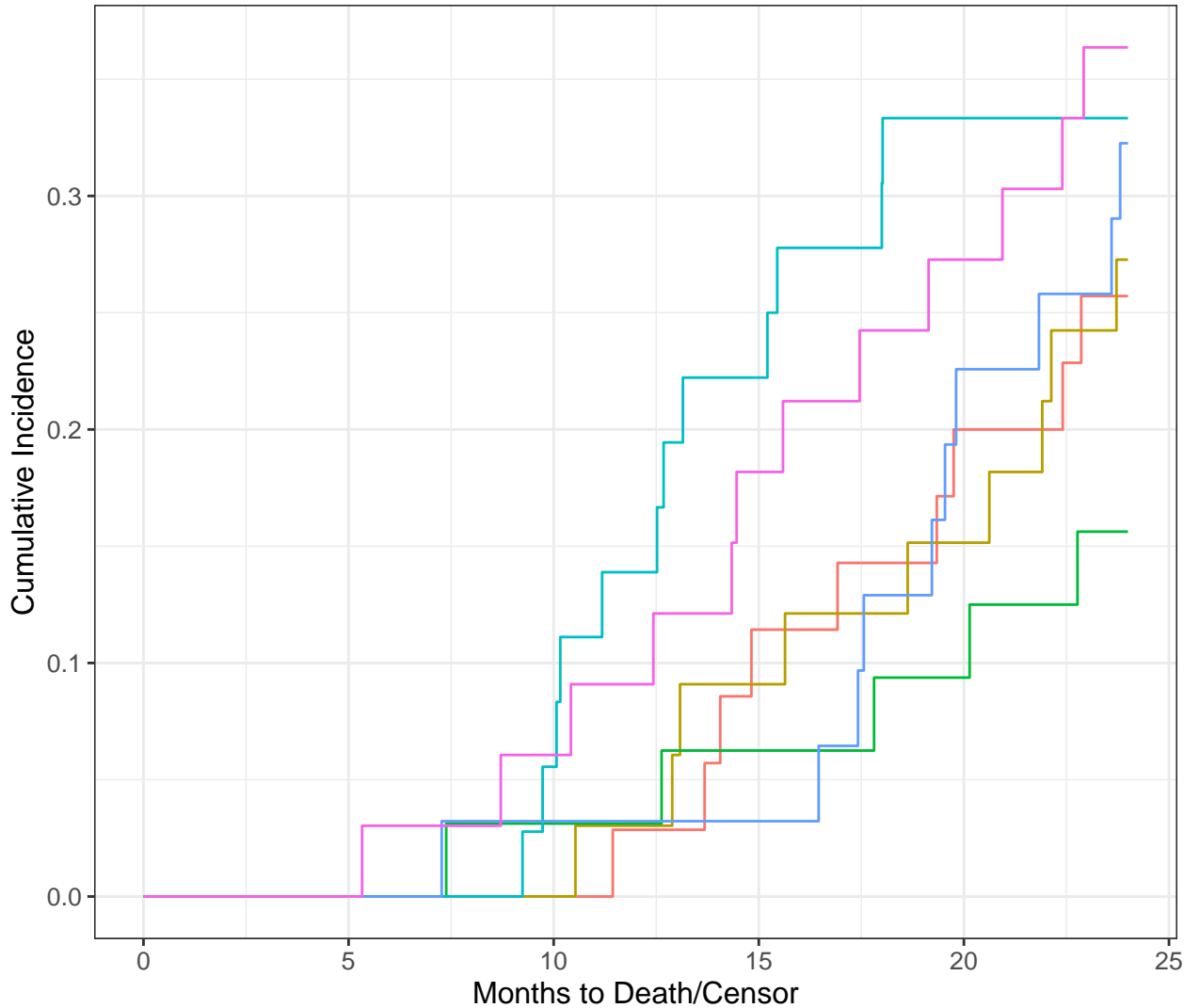
Drug B, III

At Risk	33	33	30	24	15	0
Events	0	0	2	6	9	12



— Drug A — Drug B

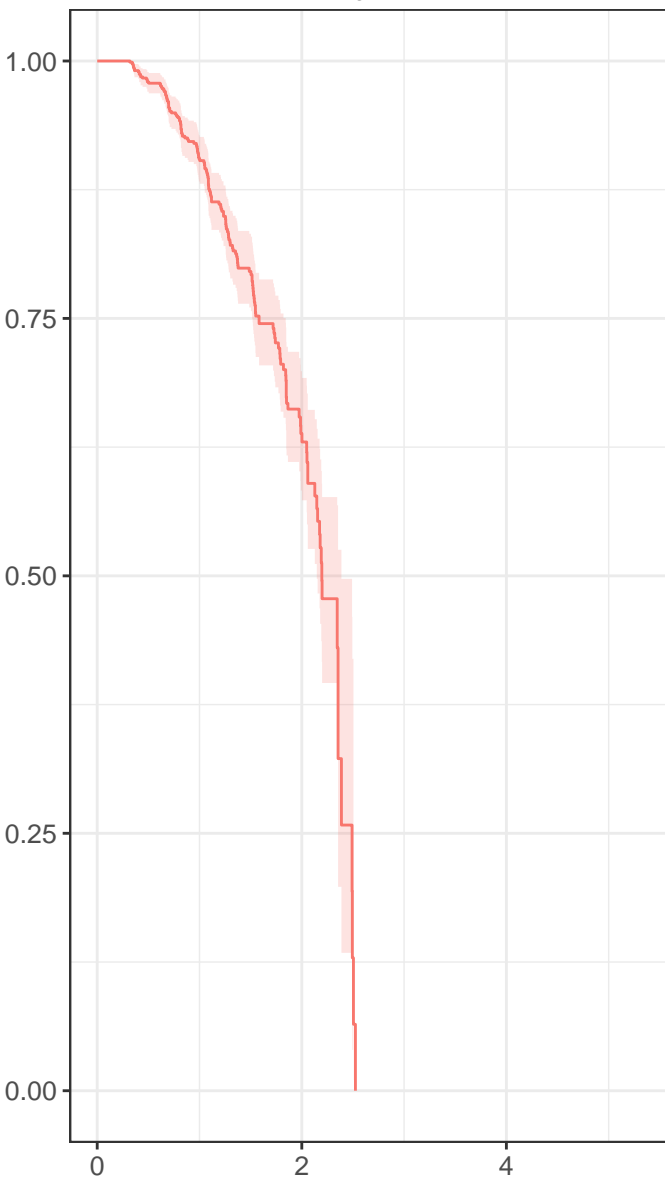
At Risk	200	199	189	158	116	0
Events	0	0	6	24	43	57



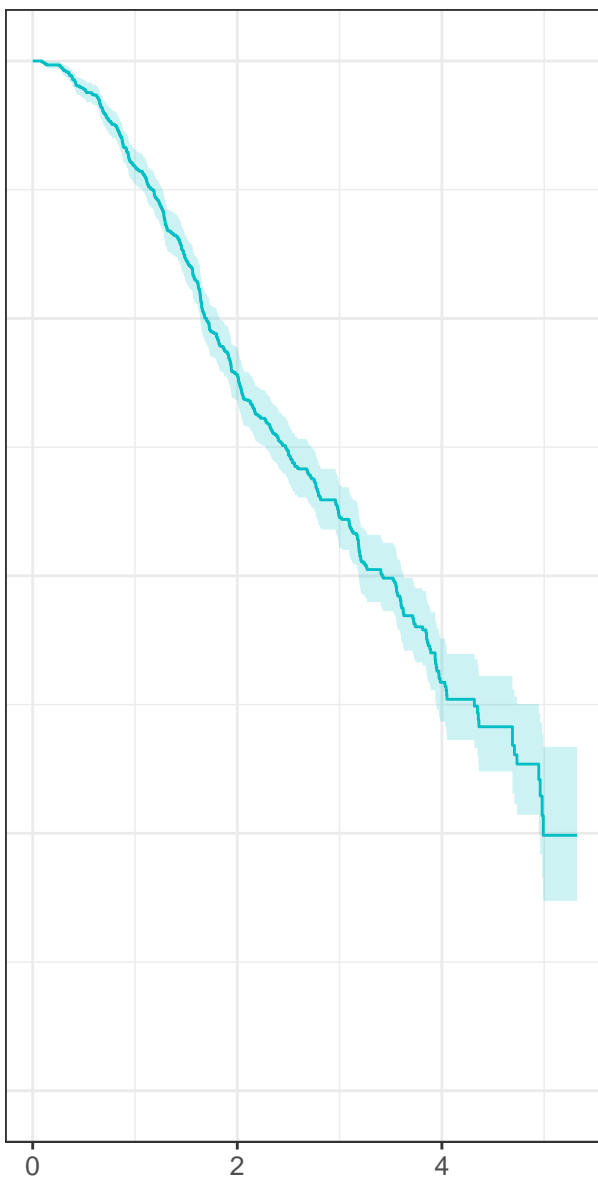
— Drug A, I — Drug A, II — Drug A, III
 — Drug B, I — Drug B, II — Drug B, III

At Risk	200	199	189	158	116	0
Events	0	0	6	24	43	57

Negative

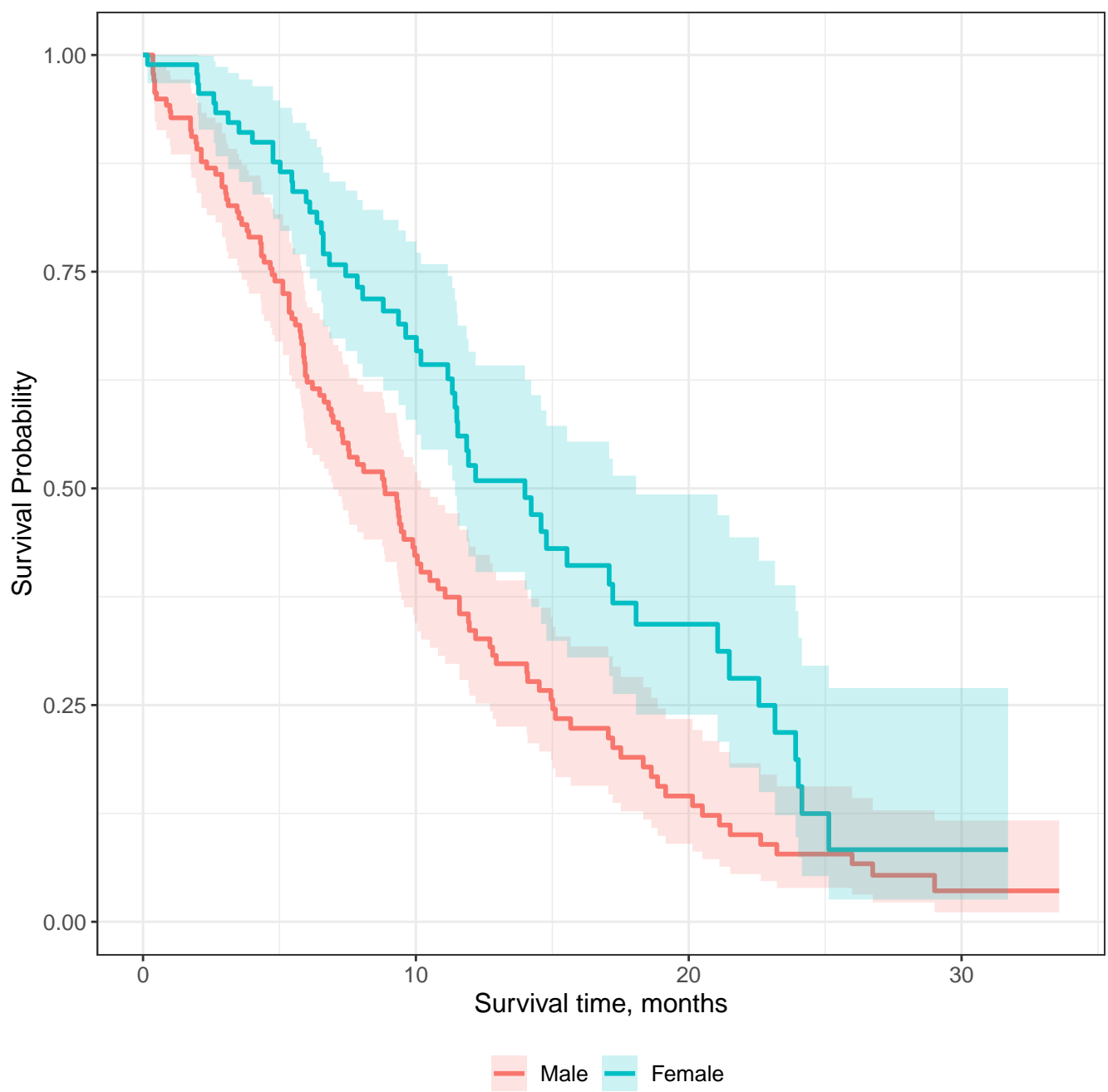


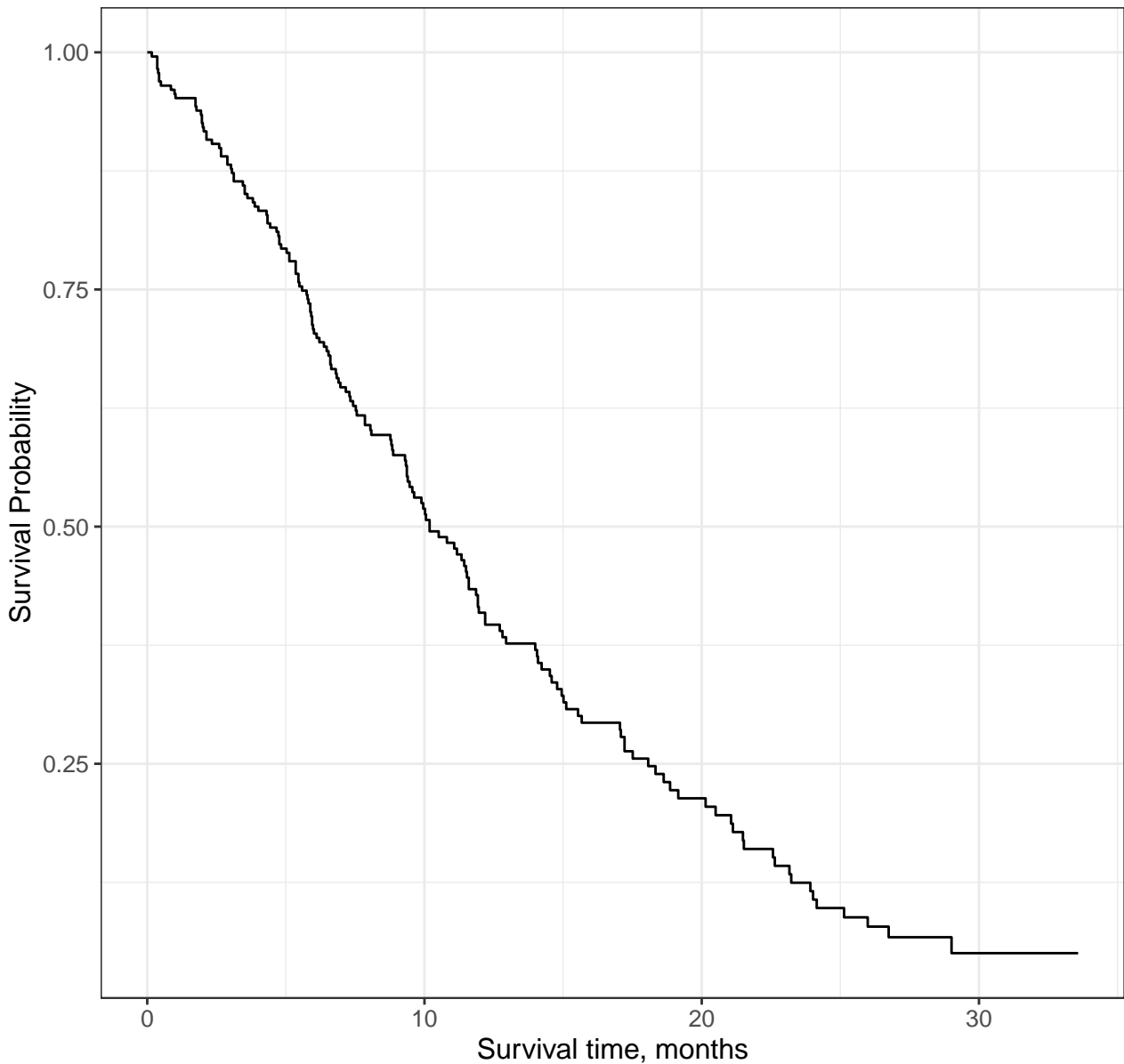
Positive



Progression-free survival (years)

Negative Positive





At Risk	228	87	24	3
Events	0	103	148	165