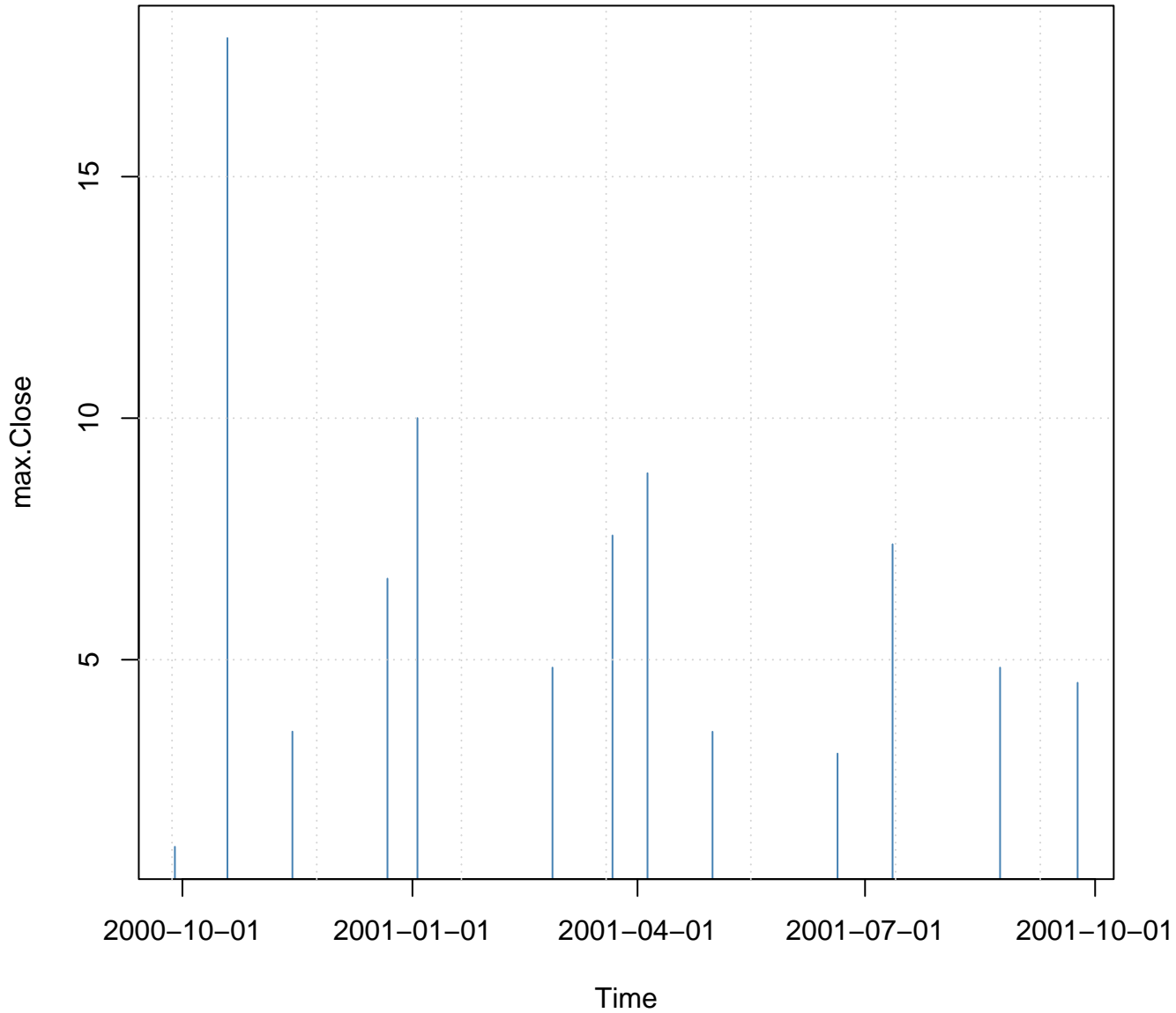
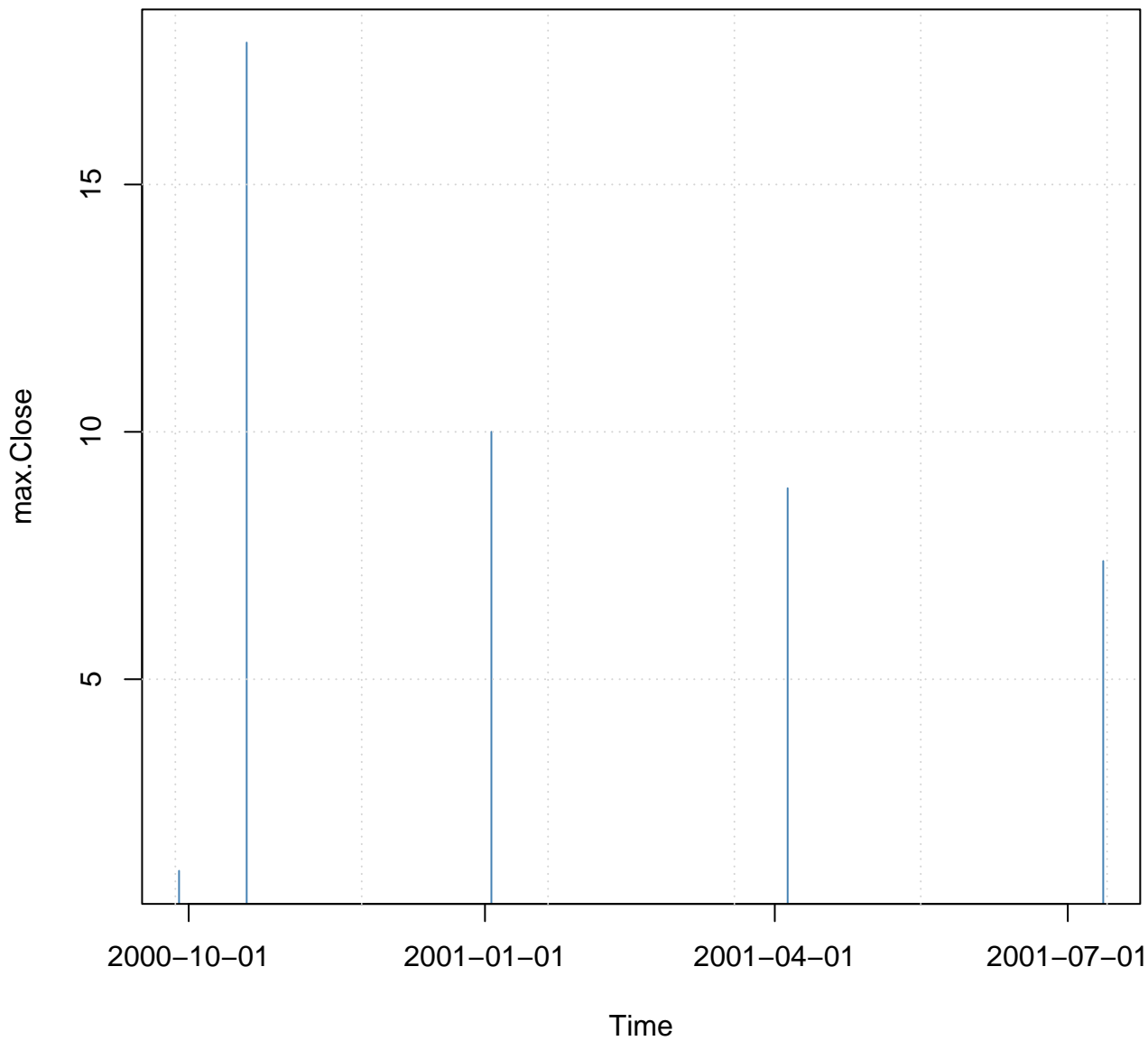


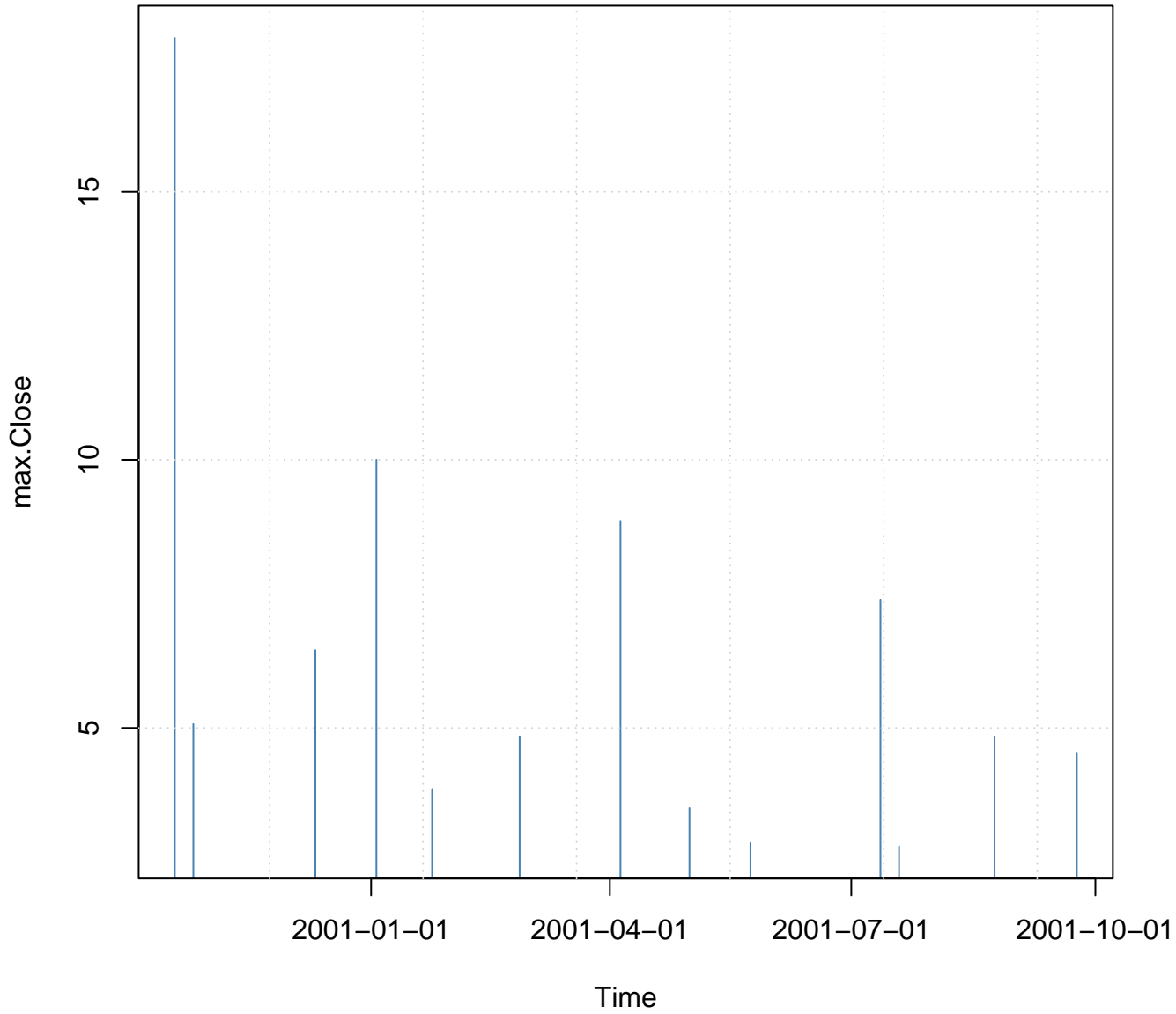
# Block Maxima



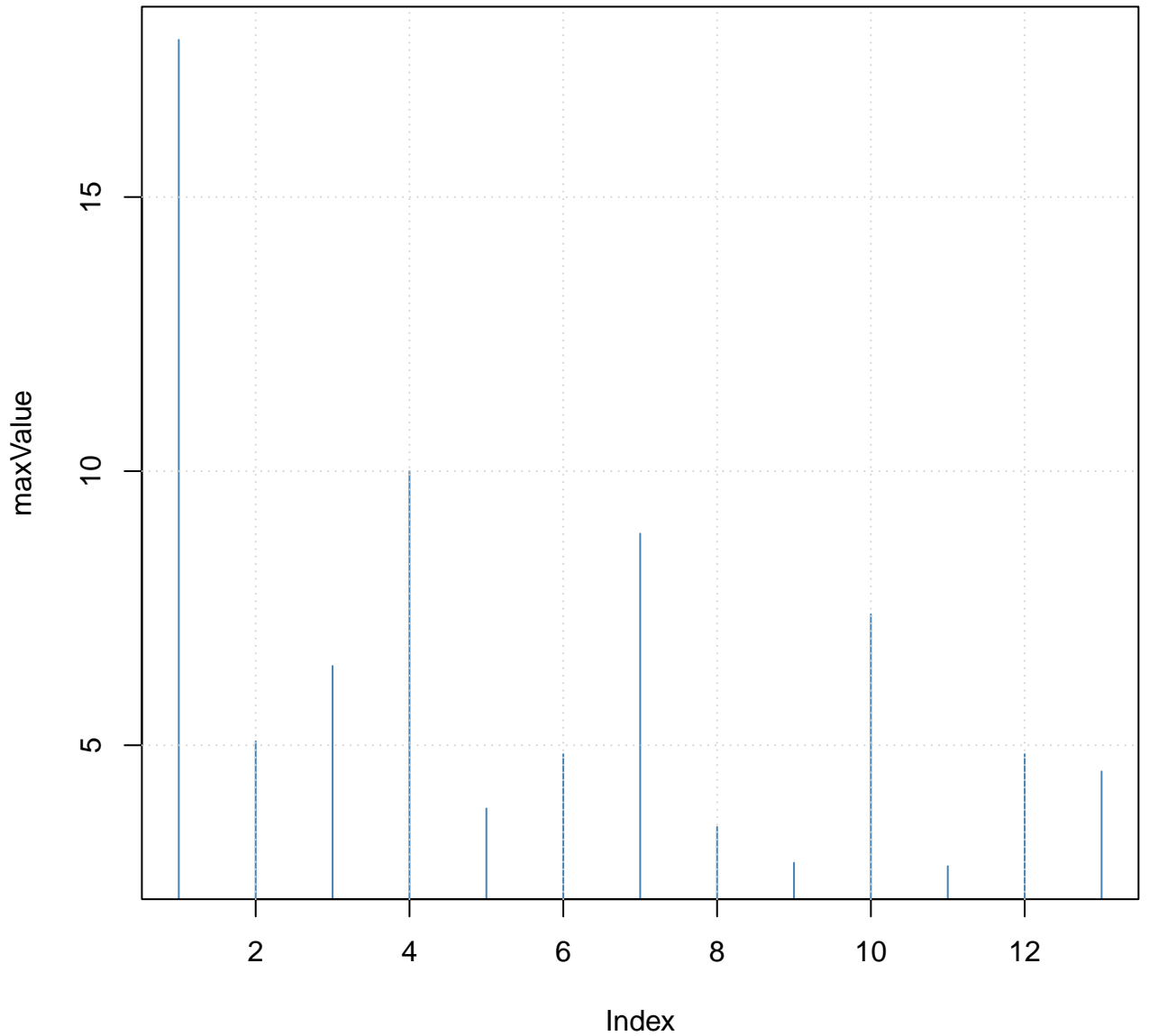
# Block Maxima



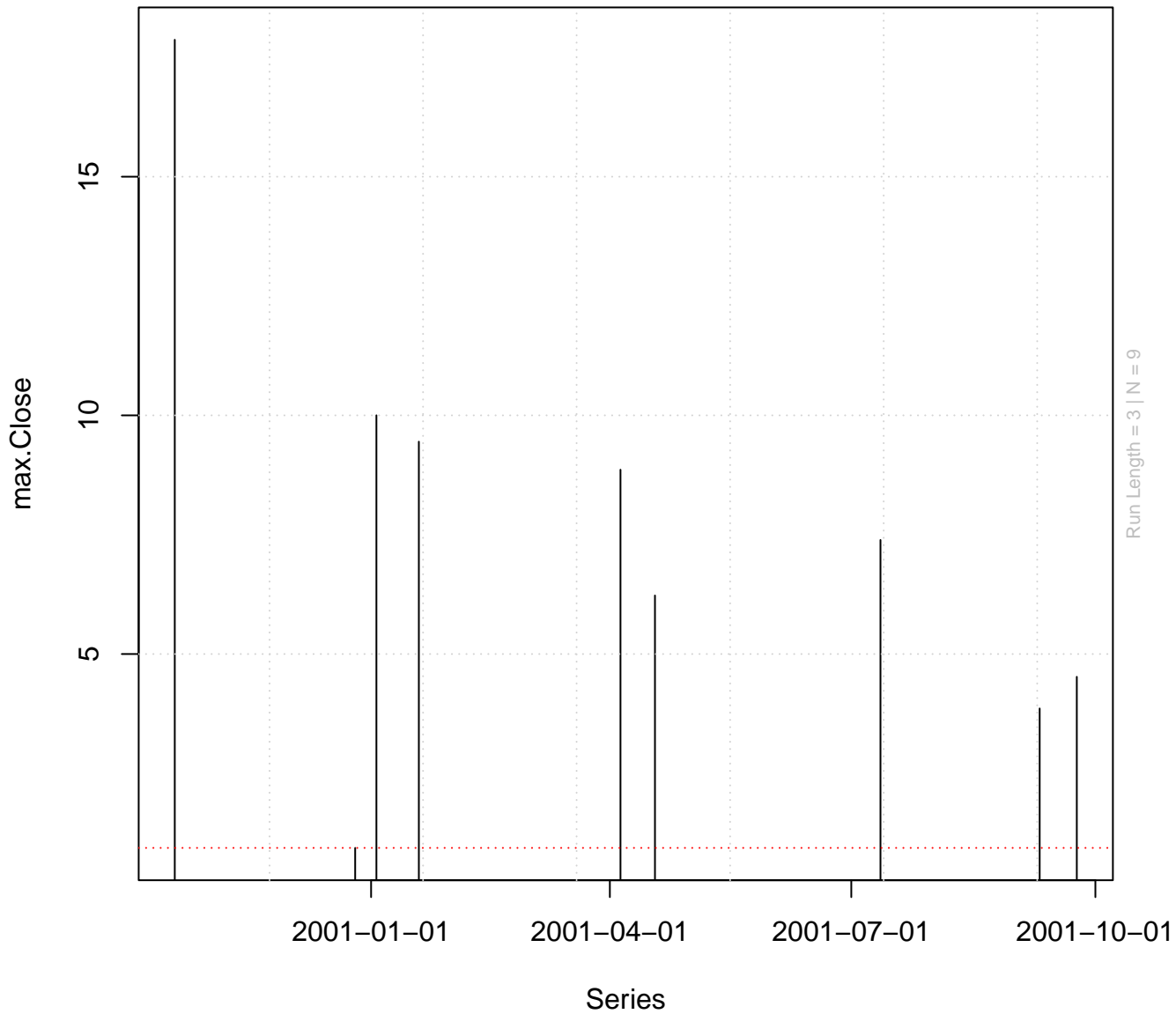
# Block Maxima



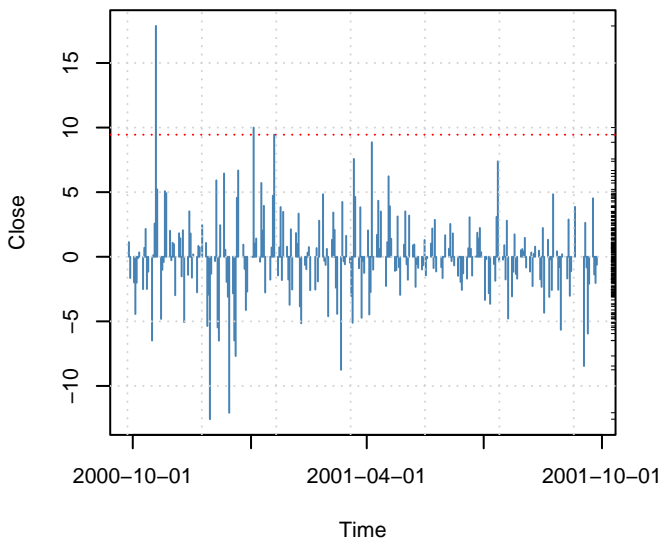
# Block Maxima



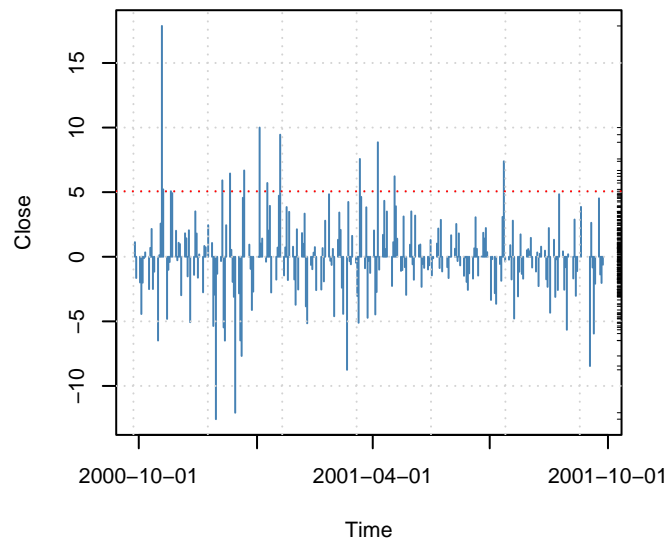
# Declassified Point Process



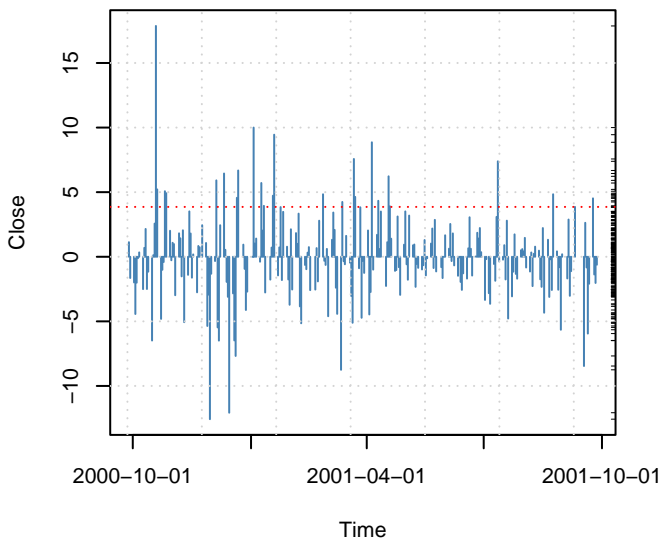
**Threshold Value**



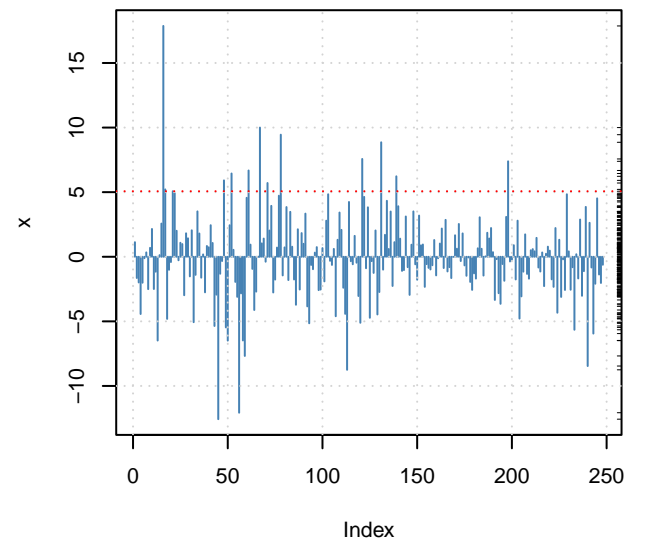
**Threshold Value**



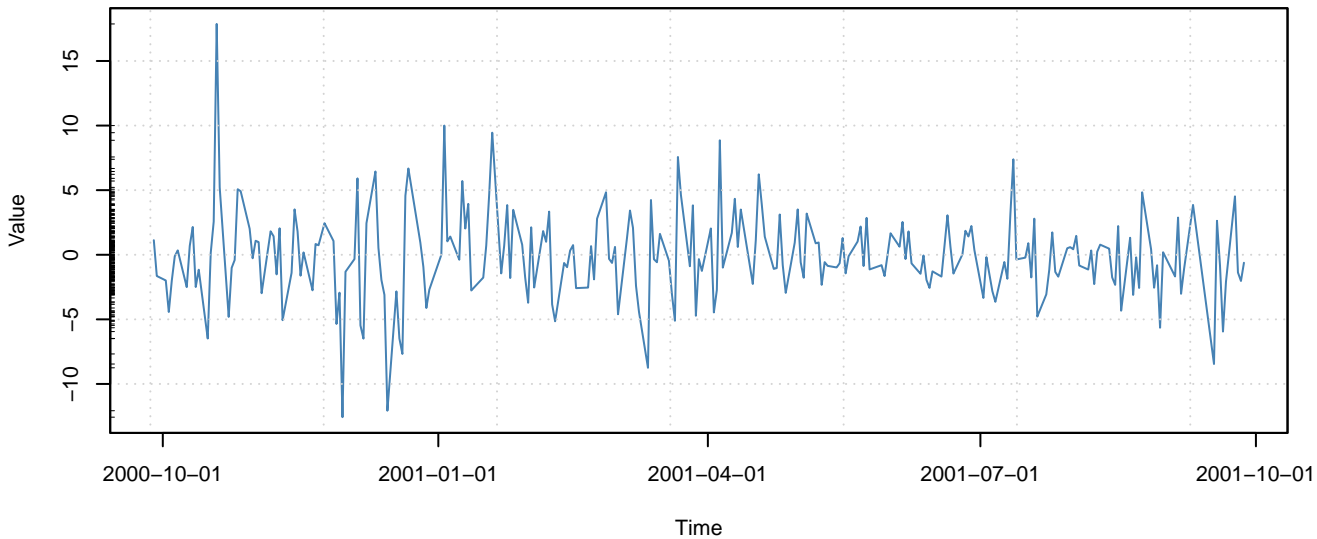
**Threshold Value**



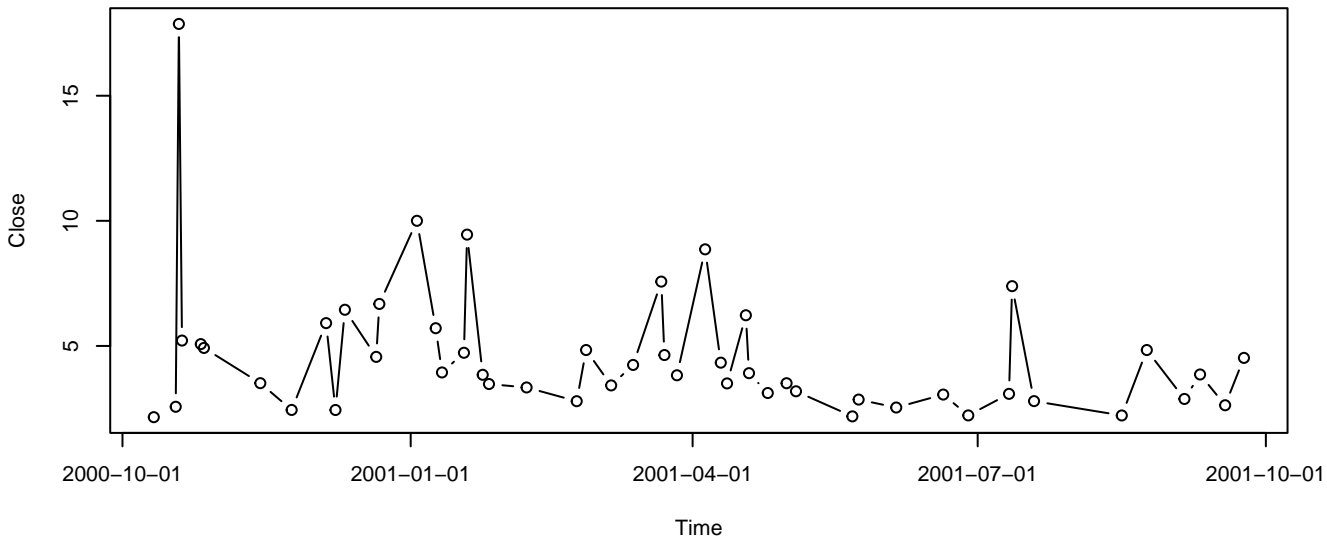
**Threshold Value**

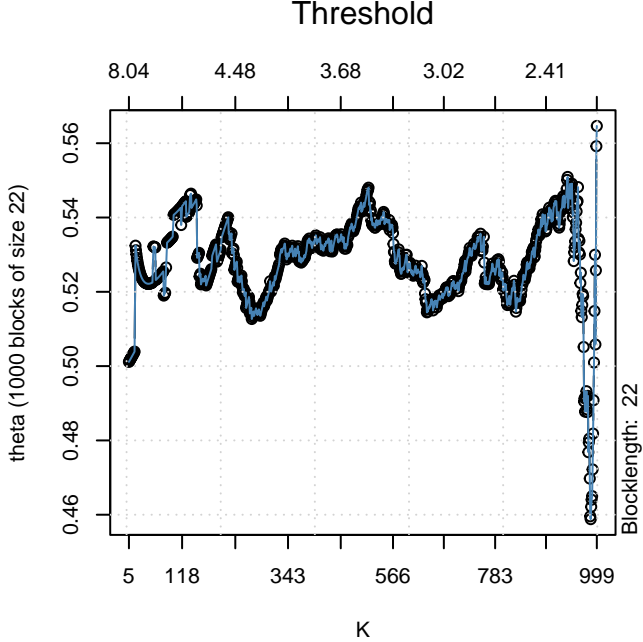
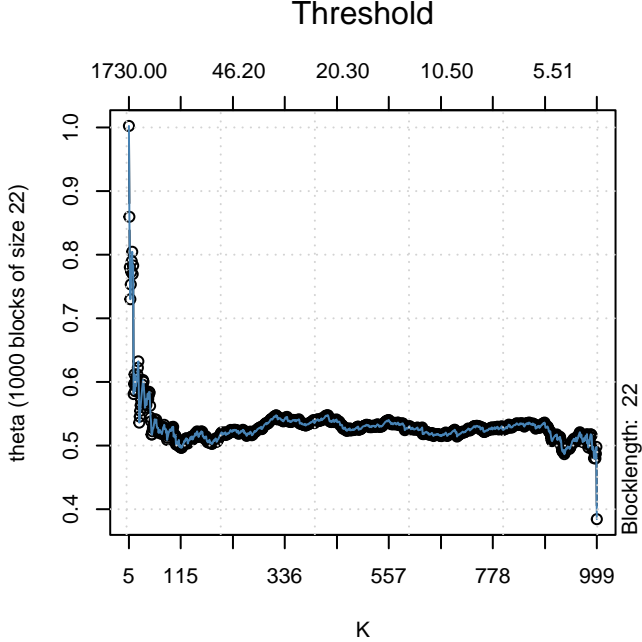


### Close



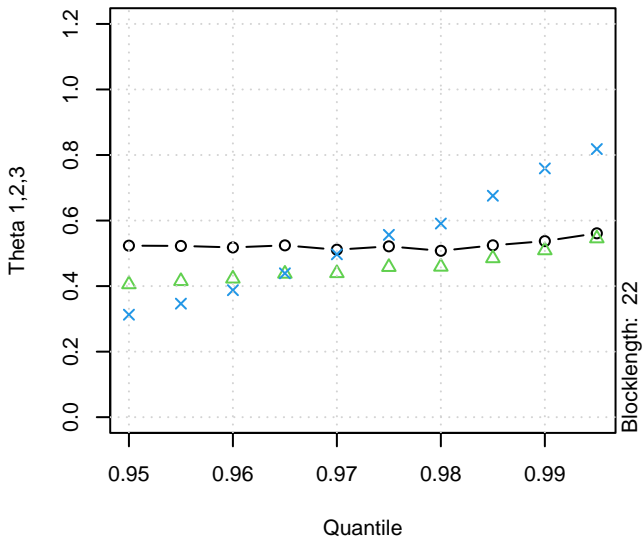
### Point Process



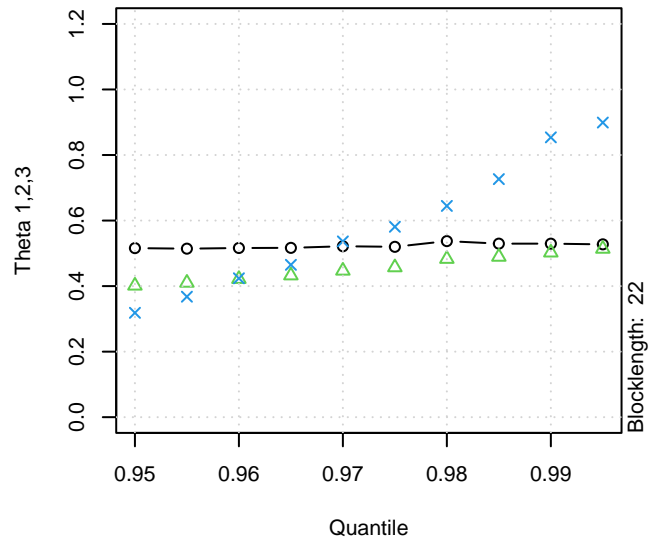




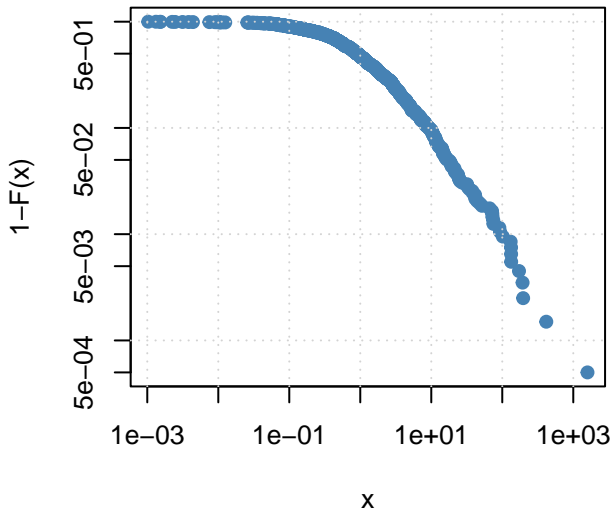
Threshold  
Extremal Index



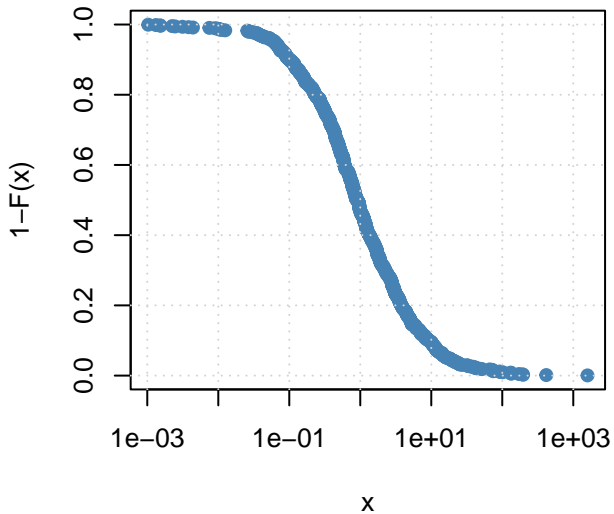
Threshold  
Extremal Index



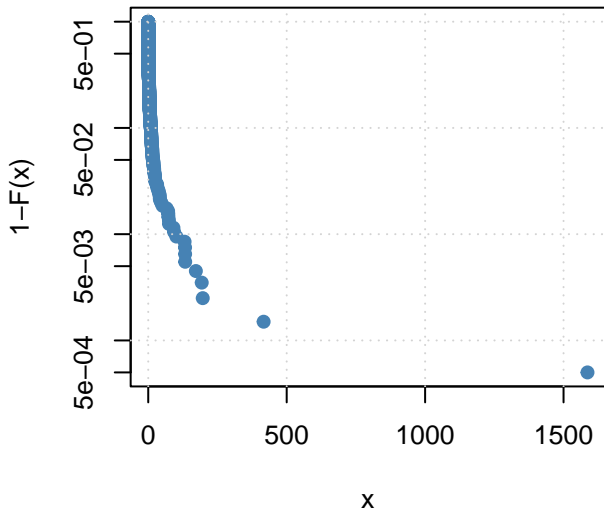
**log-log Empirical Distribution**



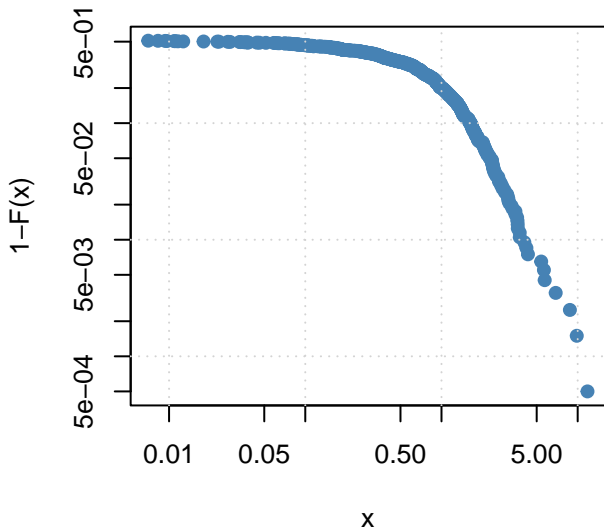
**log-lin Empirical Distribution**



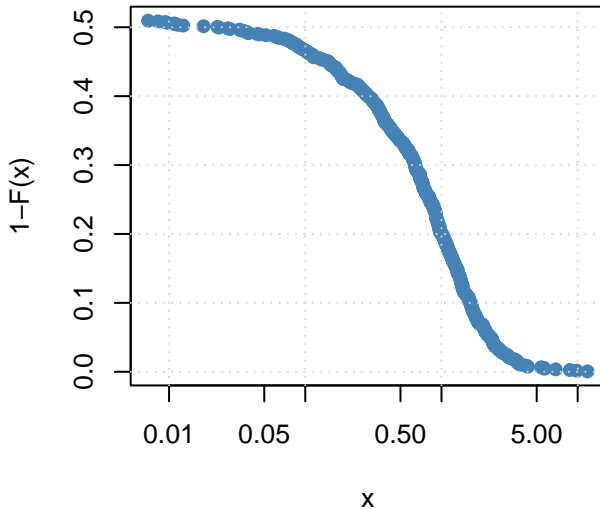
**lin-log Empirical Distribution**



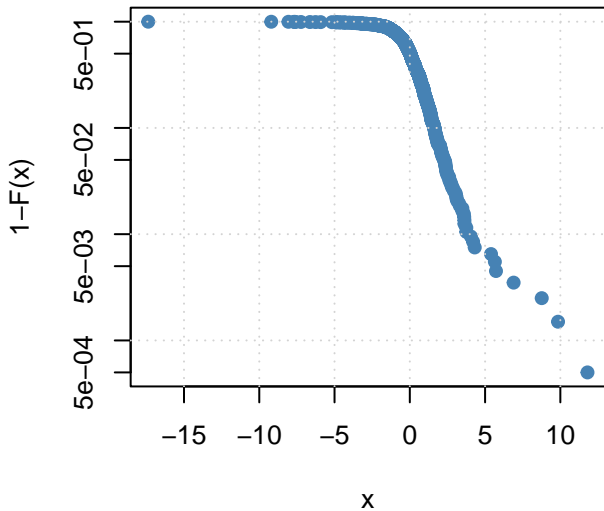
### log-log Empirical Distribution



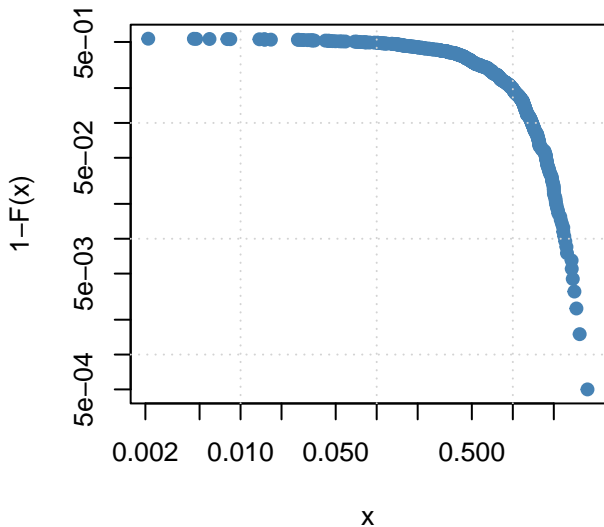
### log-lin Empirical Distribution



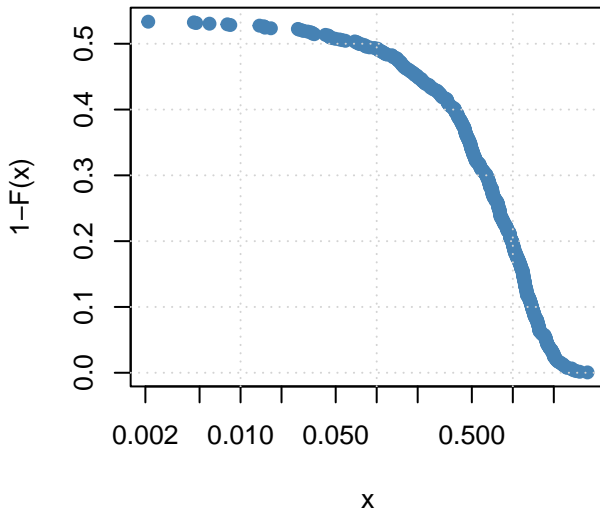
### lin-log Empirical Distribution



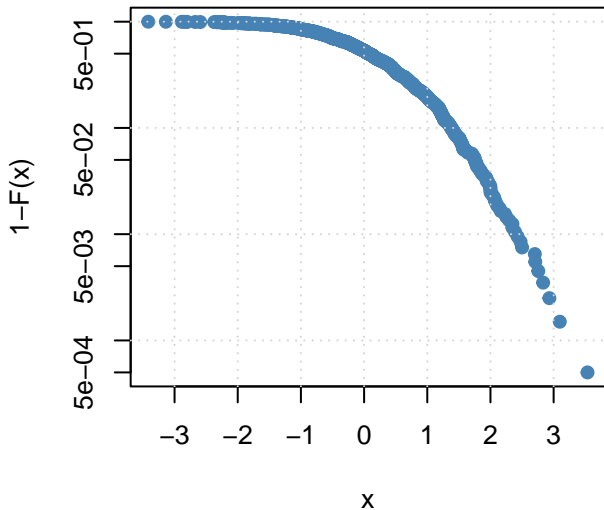
### log-log Empirical Distribution



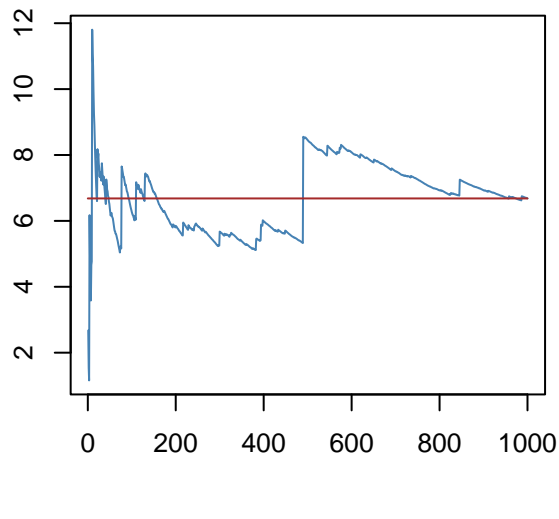
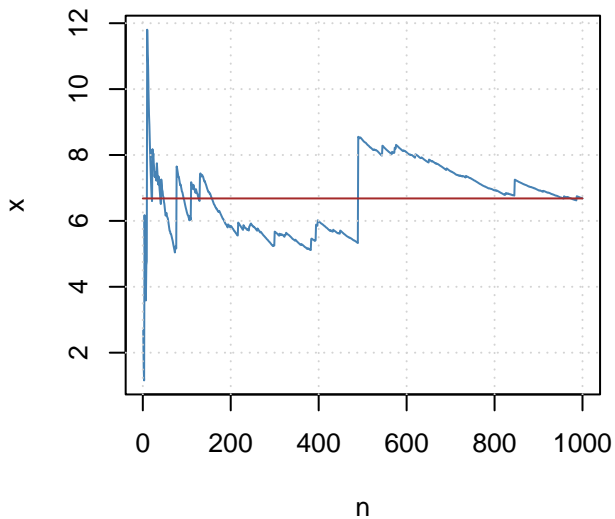
### log-lin Empirical Distribution



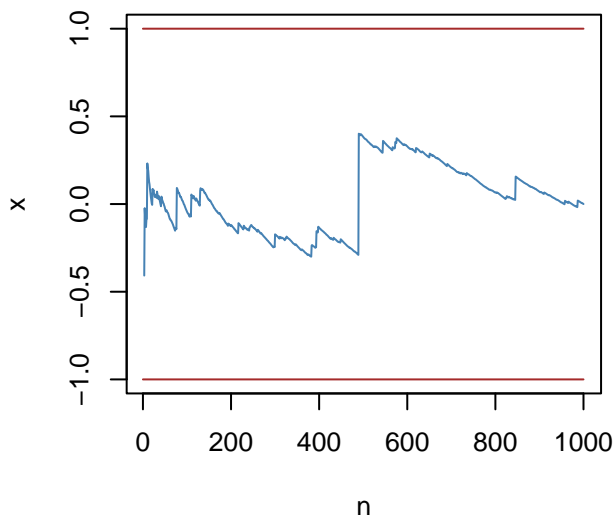
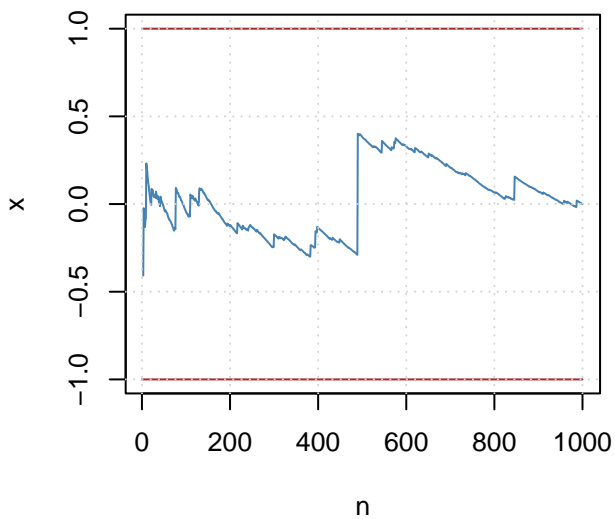
### lin-log Empirical Distribution



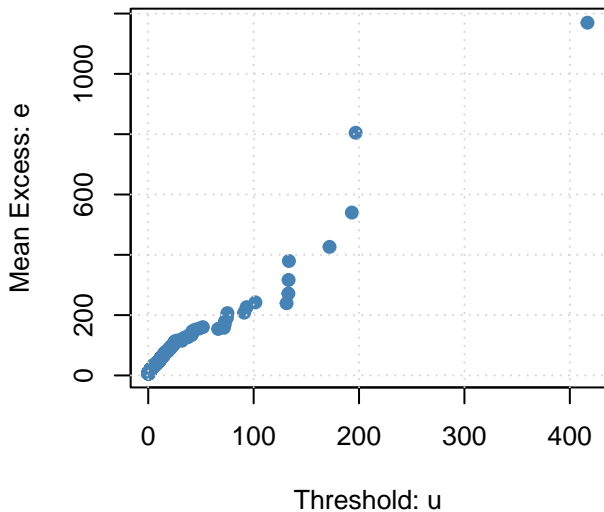
### SLLN



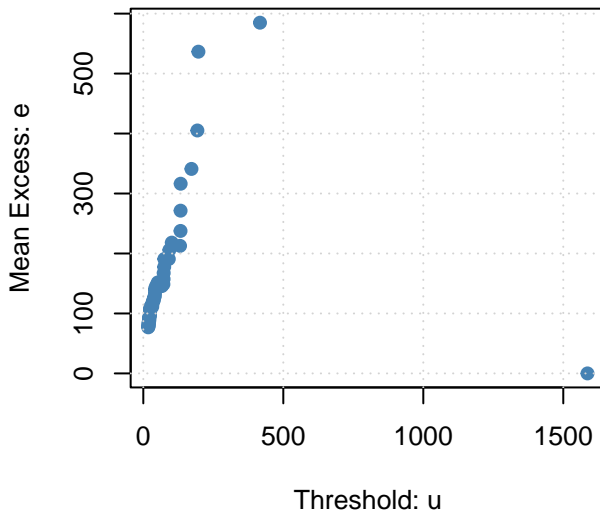
### LIL



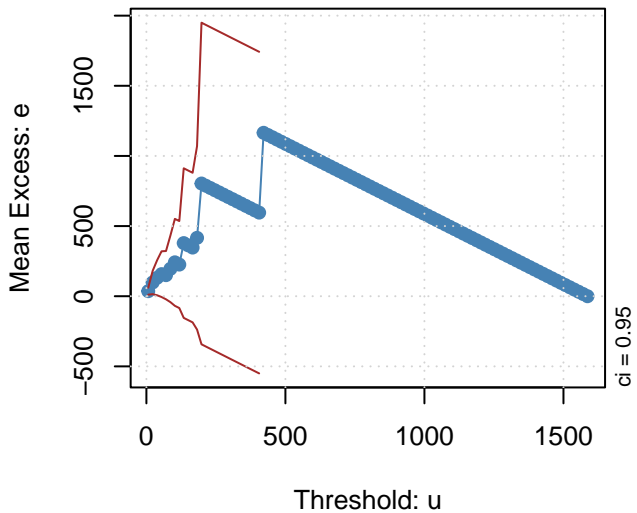
### Mean Excess Plot

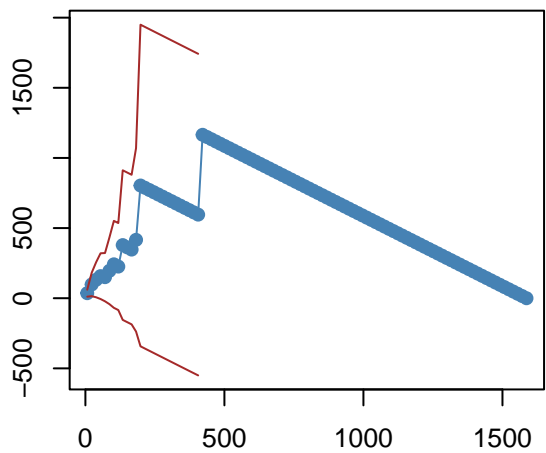
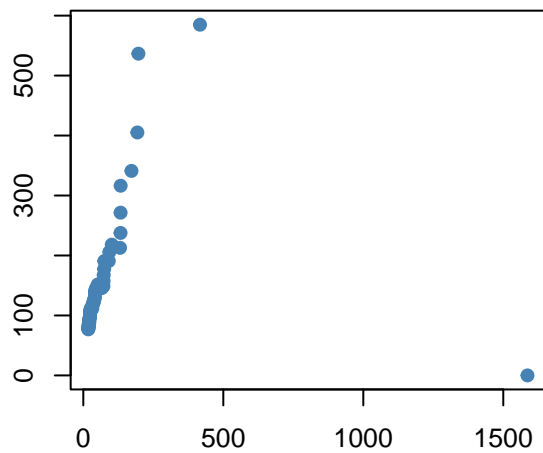
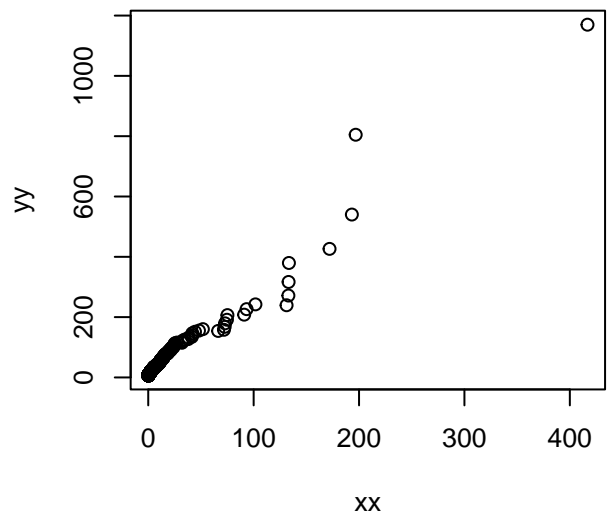


### Mean Excess Function

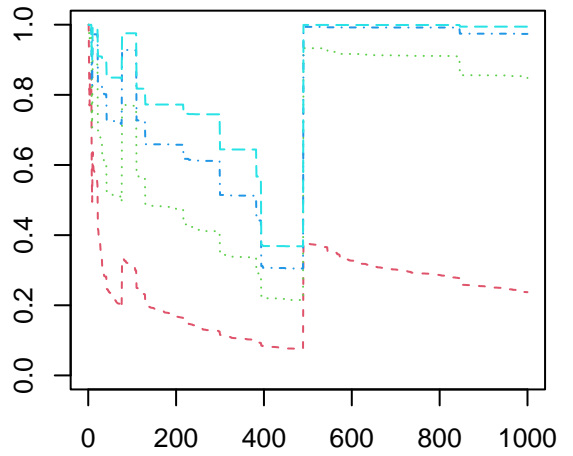
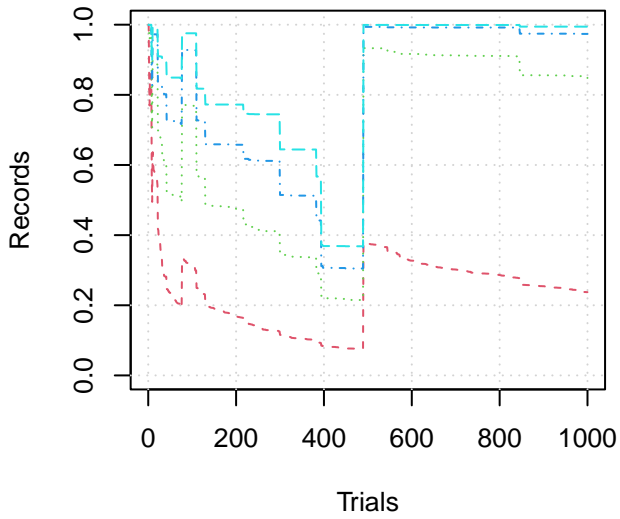


### Mean Residual Live Plot



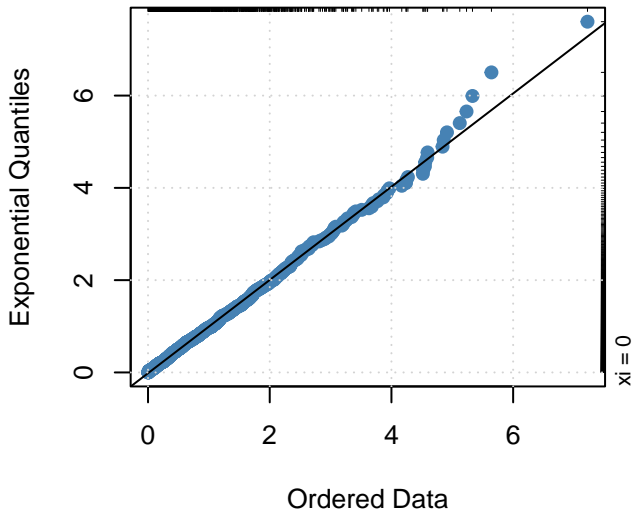


**Plot of Maximum/Sum Ratio**

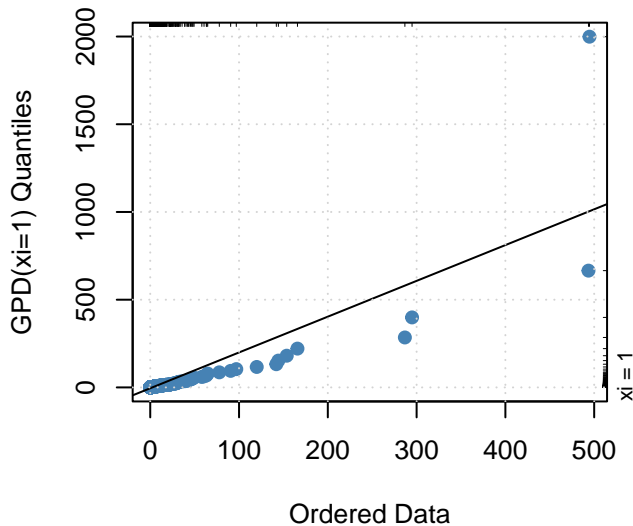




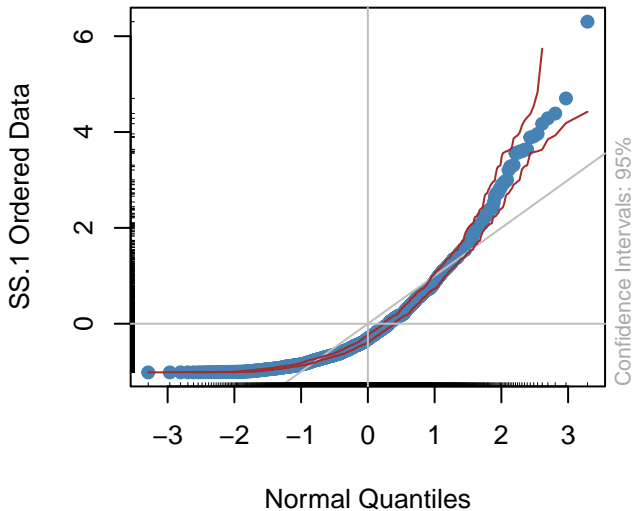
### Exploratory QQ Plot



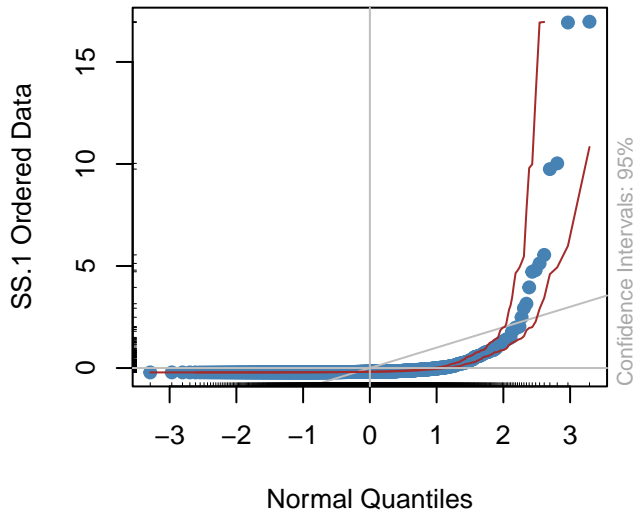
### Exploratory QQ Plot



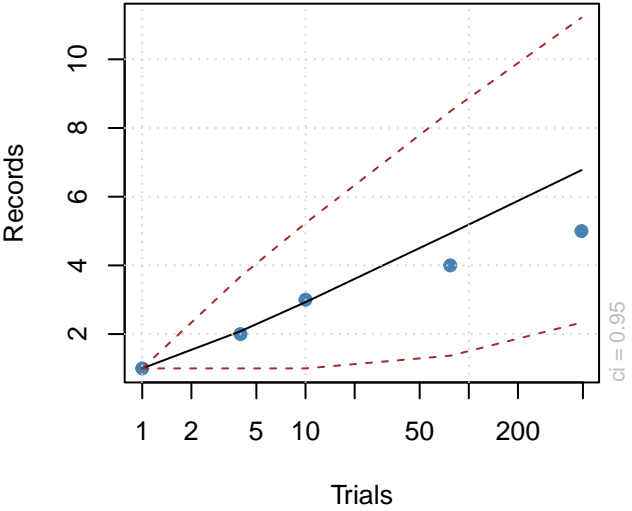
### NORM QQ PLOT



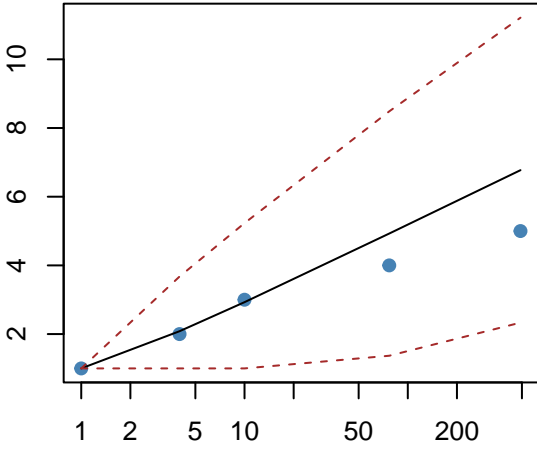
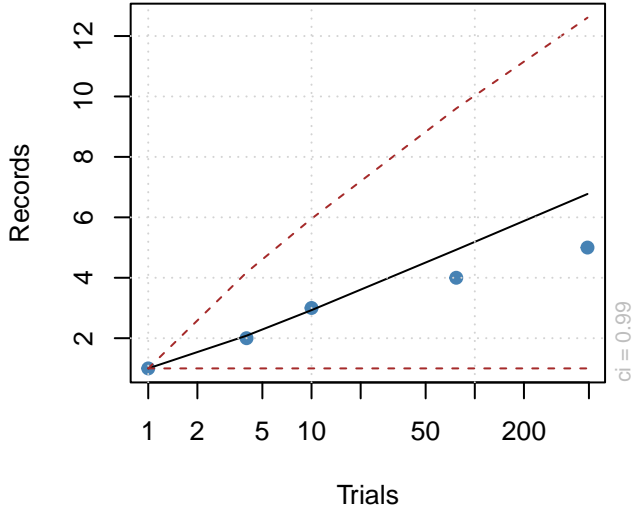
### NORM QQ PLOT



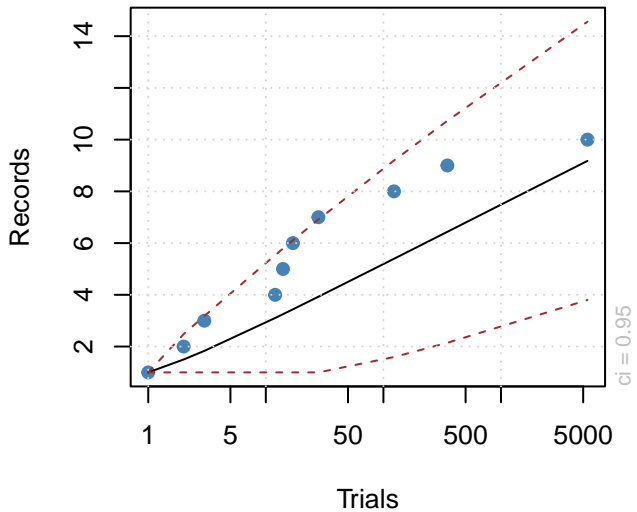
Plot of Record Development



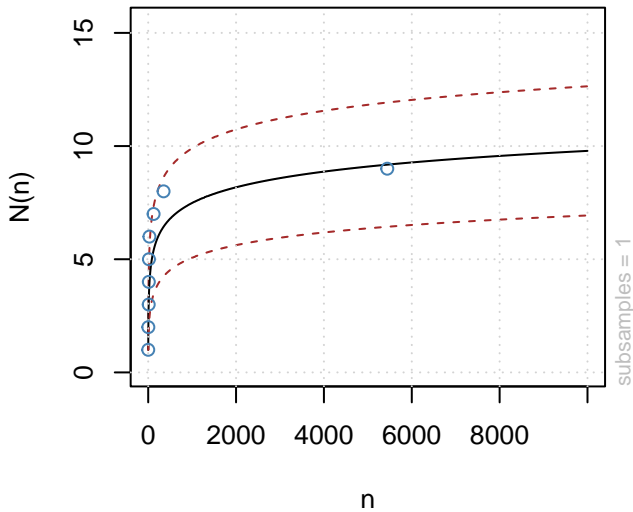
Plot of Record Development



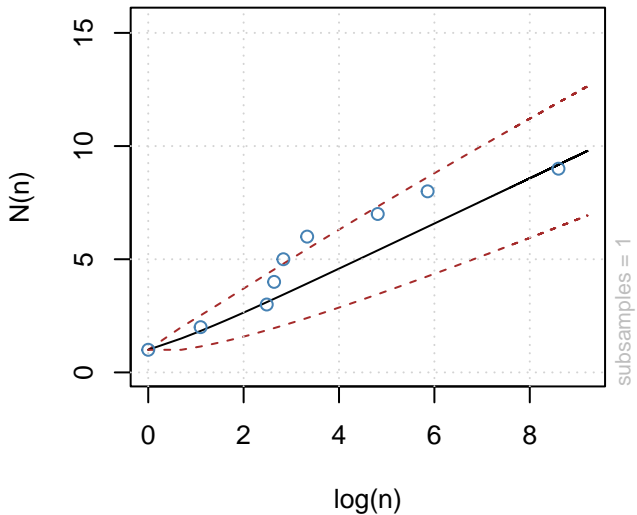
### Plot of Record Development



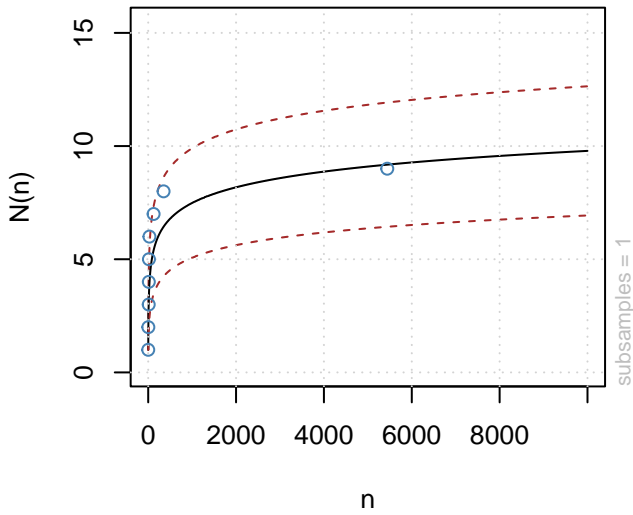
### Subsample Records Plot



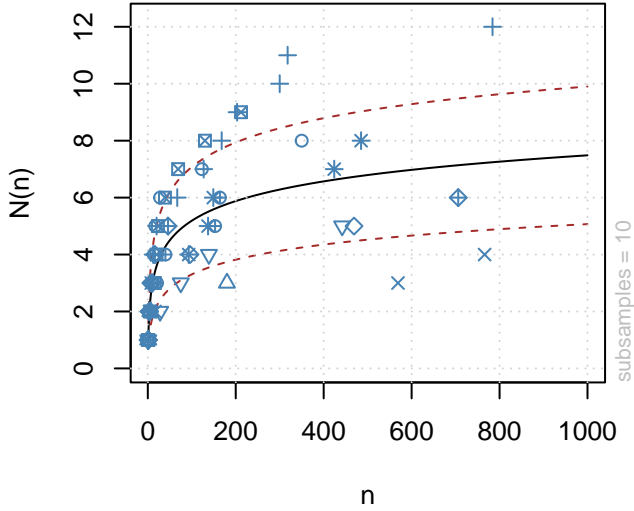
### Subsample Records Plot



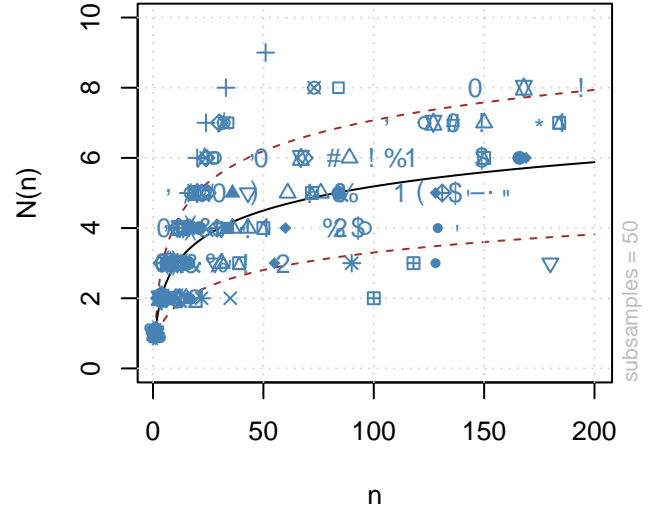
### Subsample Records Plot



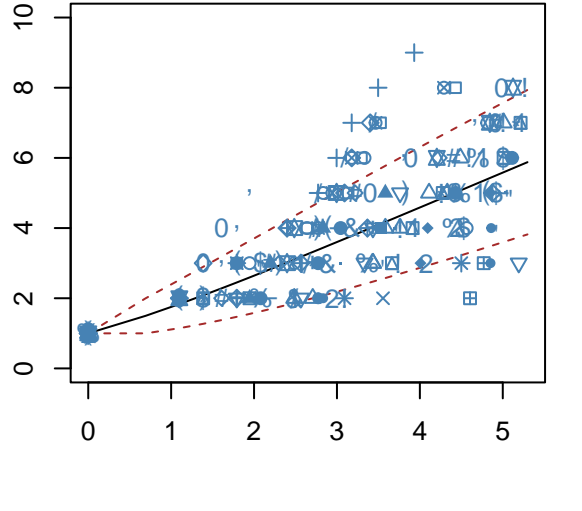
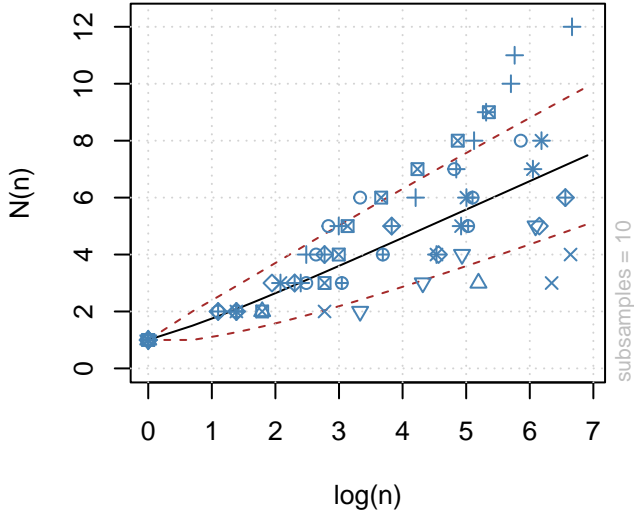
### Subsample Records Plot



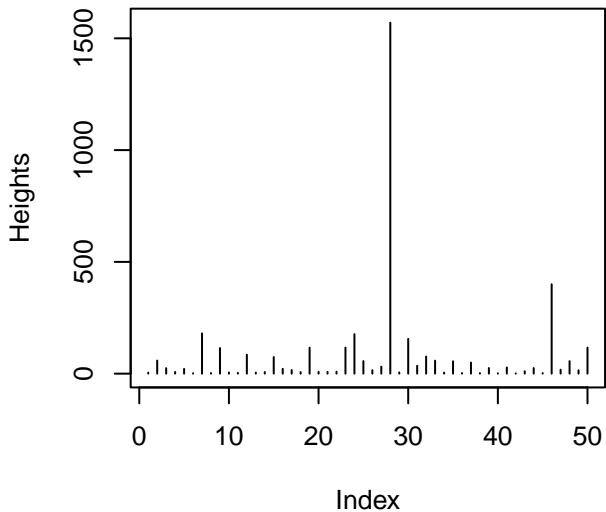
### Subsample Records Plot



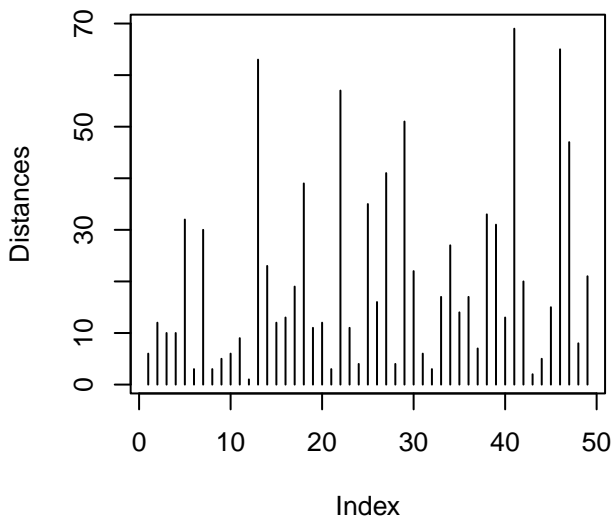
### Subsample Records Plot



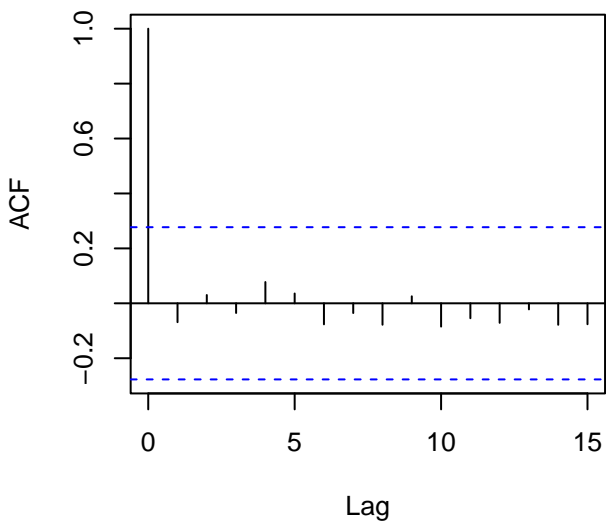
### Heights over Threshold



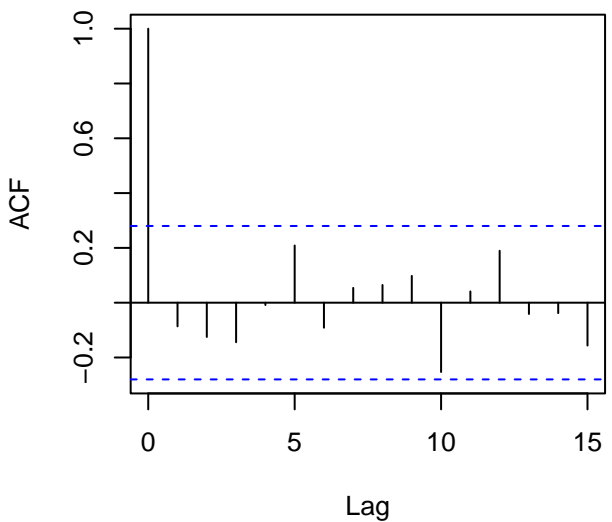
### Distances between Heights

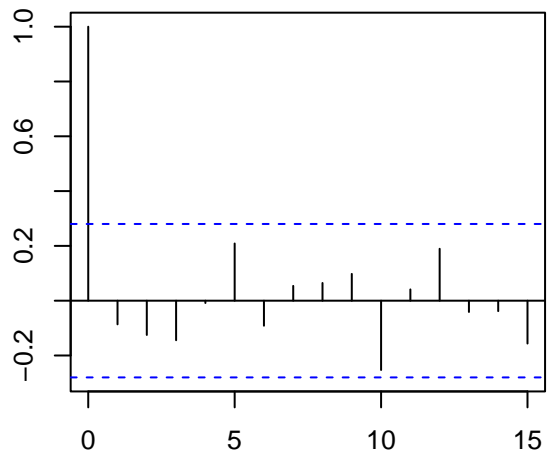
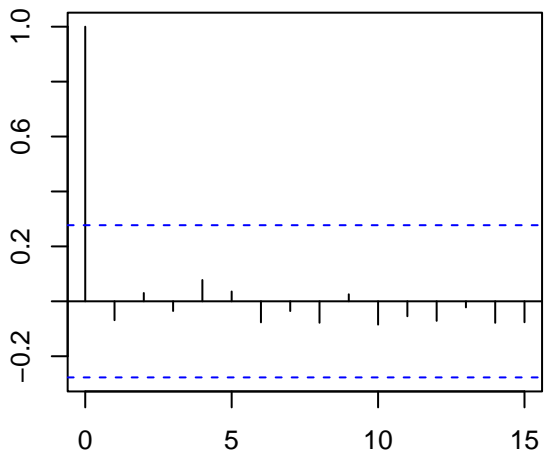
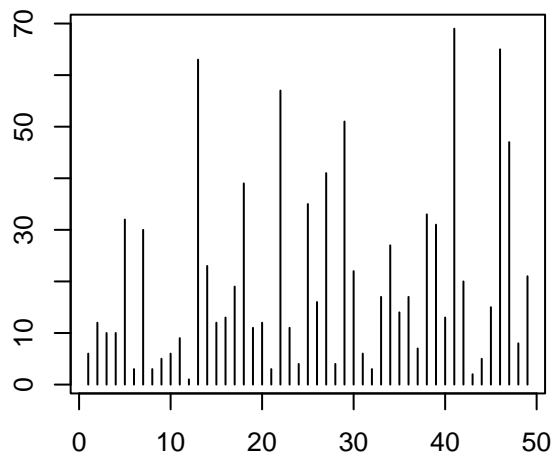
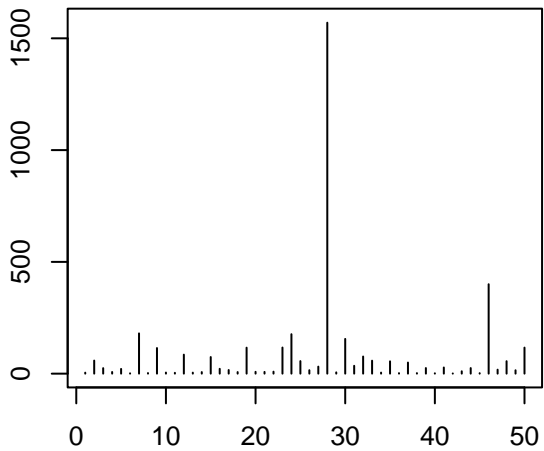


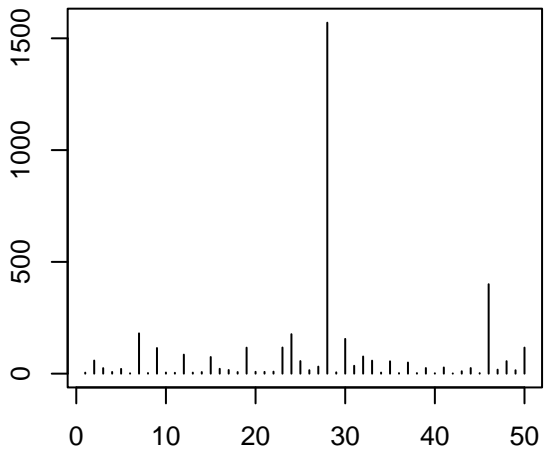
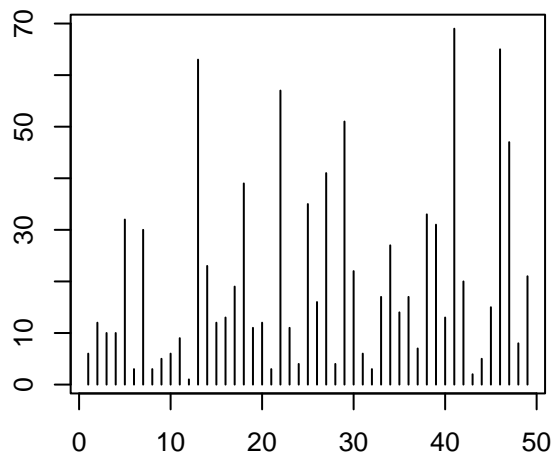
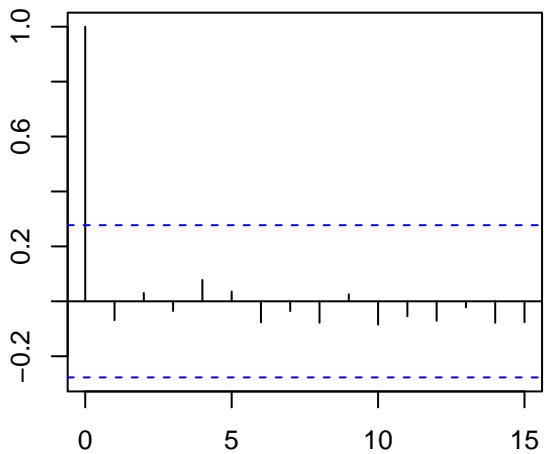
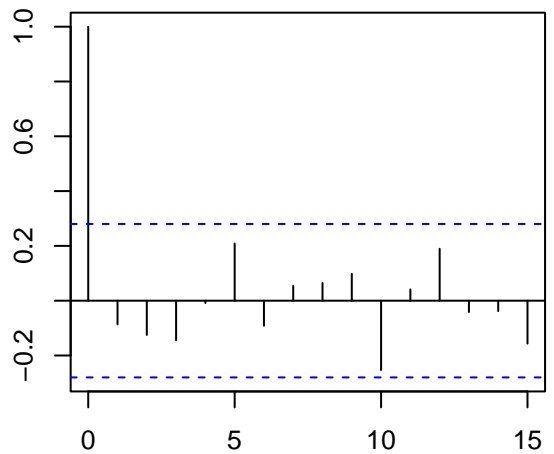
### Series Heights



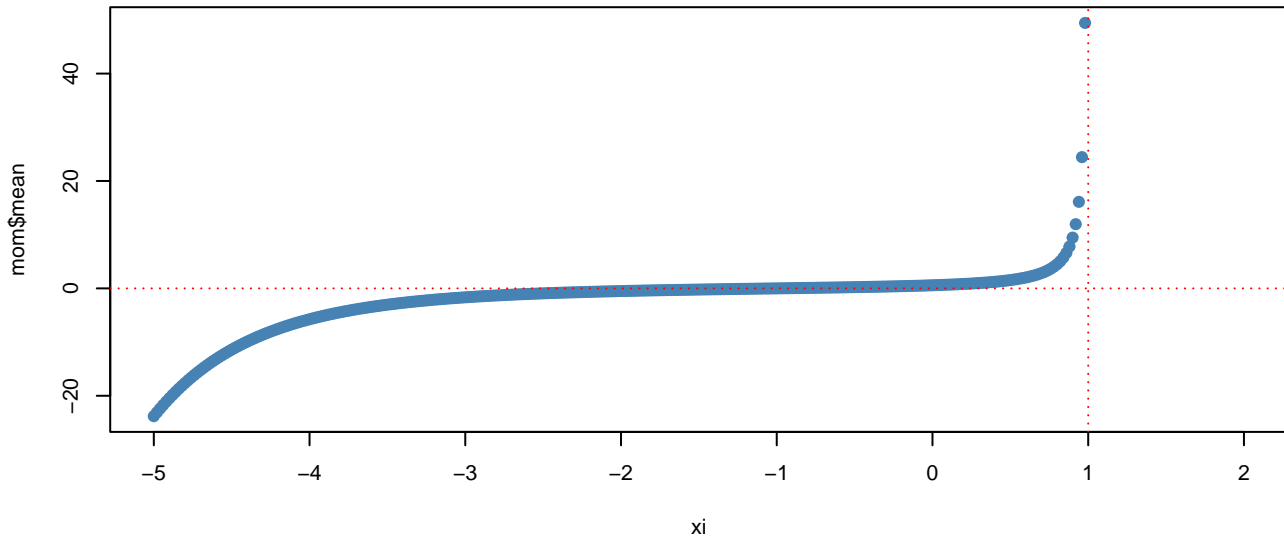
### Series Distances



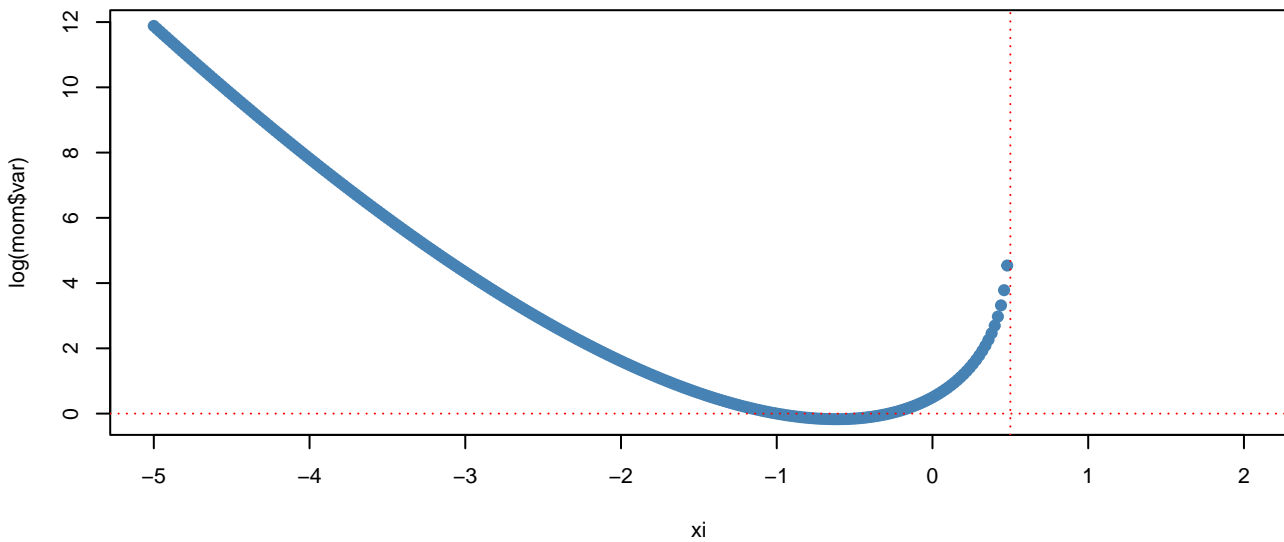


**1****2****3****4**

### Mean GEV



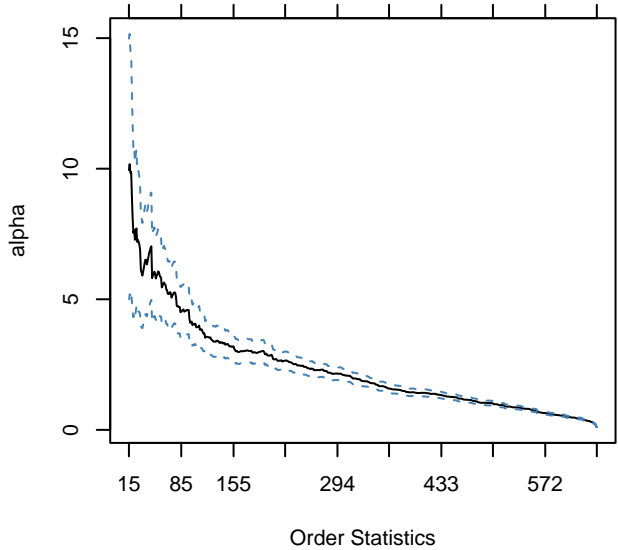
### log Variance GEV





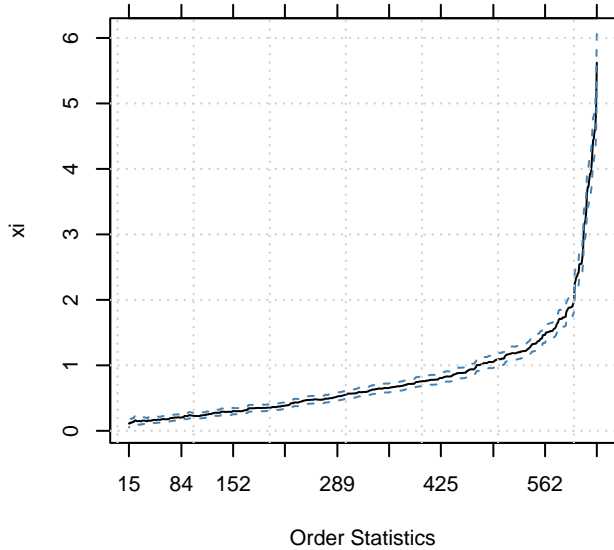
Threshold

2.690000 1.170000 0.562000 -0.000322

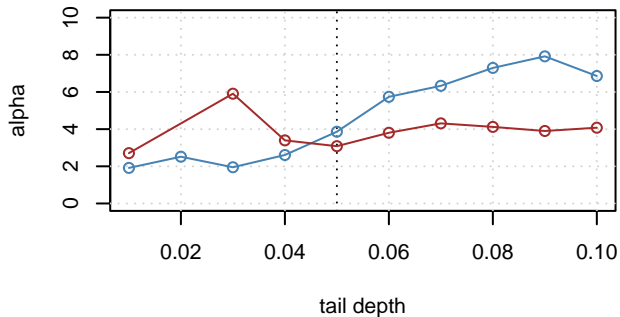


Threshold

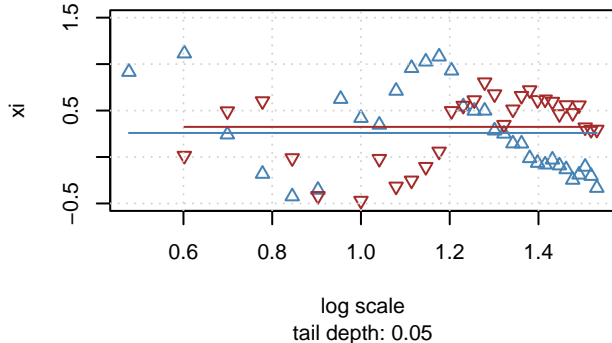
2.66000 1.45000 0.89600 0.52600 0.19500



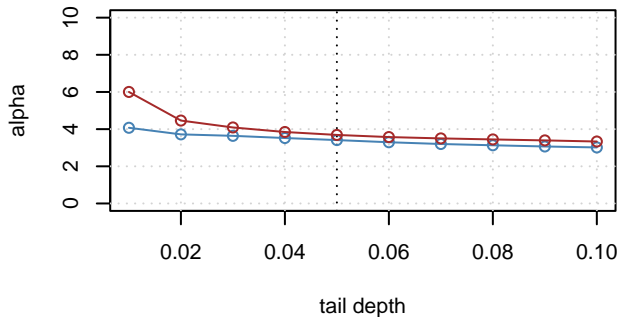
### Pickands Summary



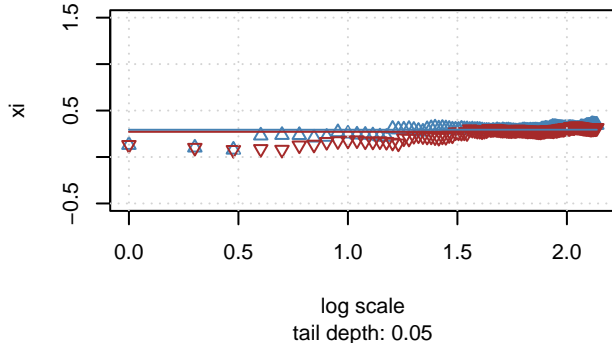
### Pickands Estimator



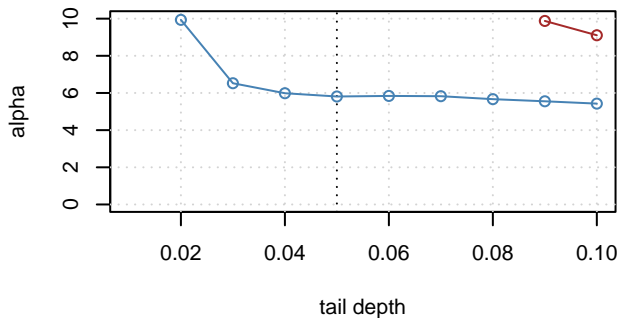
### Hill Summary



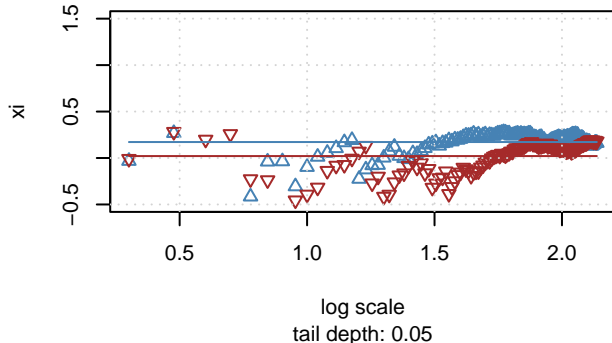
### Hill Estimator



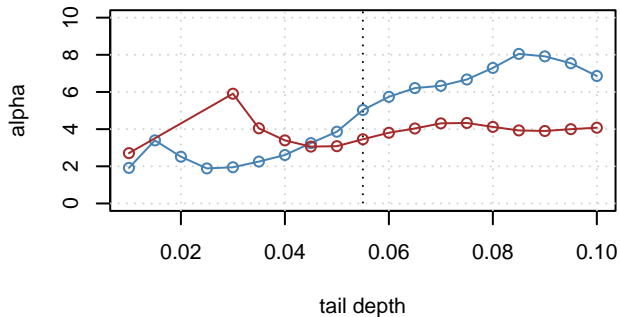
### Deckers–Einmahl–deHaan Summary



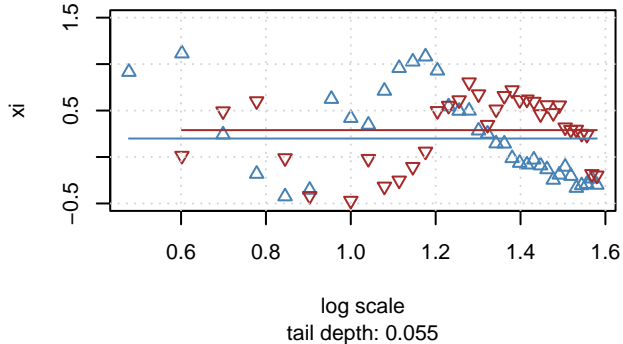
### Deckers – Einmahl – de Haan Estimator



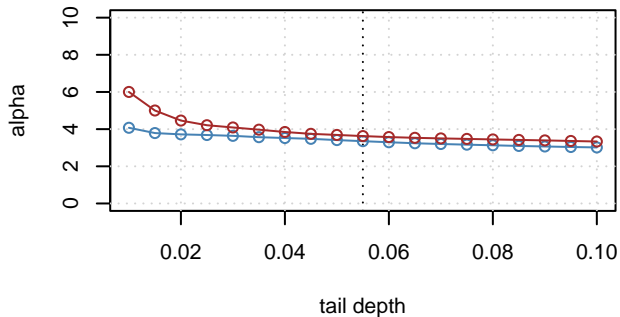
### Pickands Summary



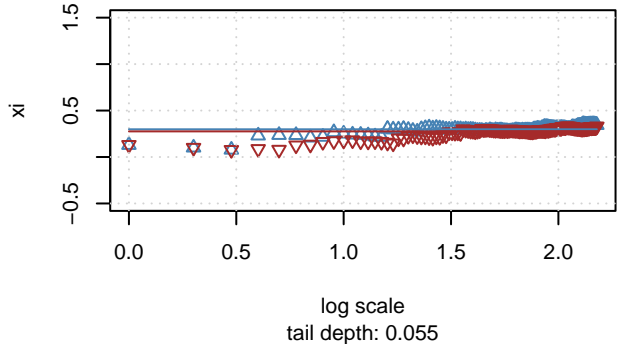
### Pickands Estimator



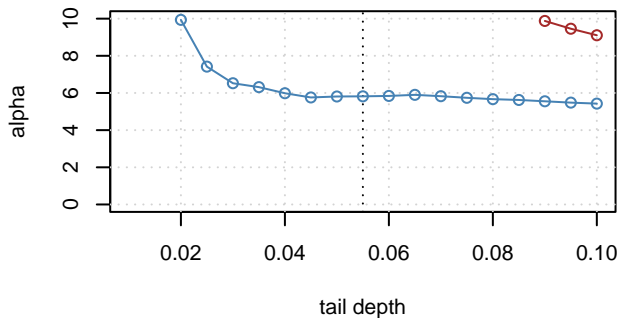
### Hill Summary



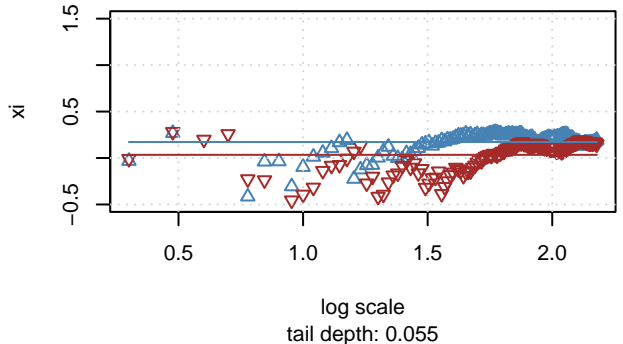
### Hill Estimator



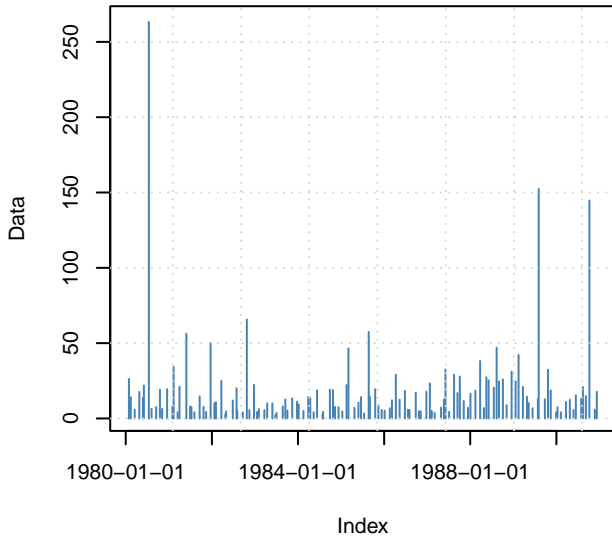
### Deckers–Einmahl–deHaan Summary



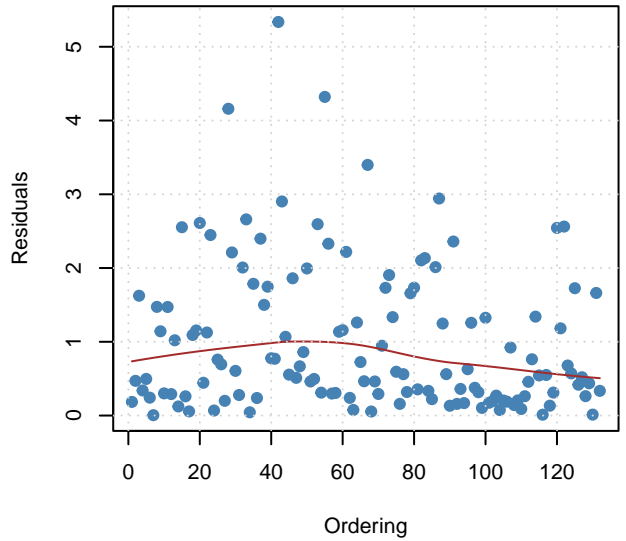
### Deckers – Einmahl – de Haan Estimator



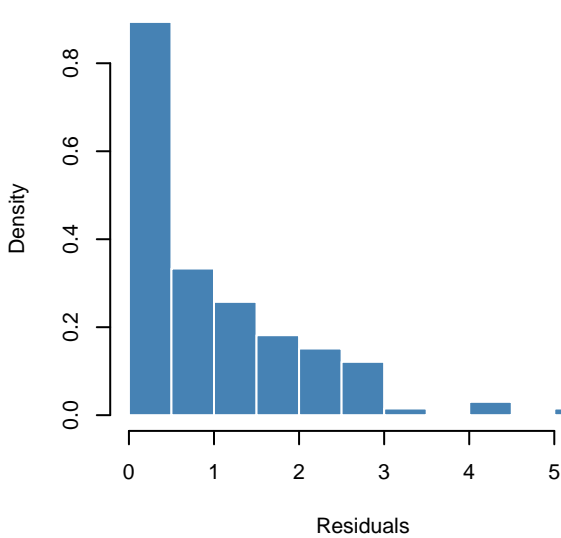
### Block Maxima



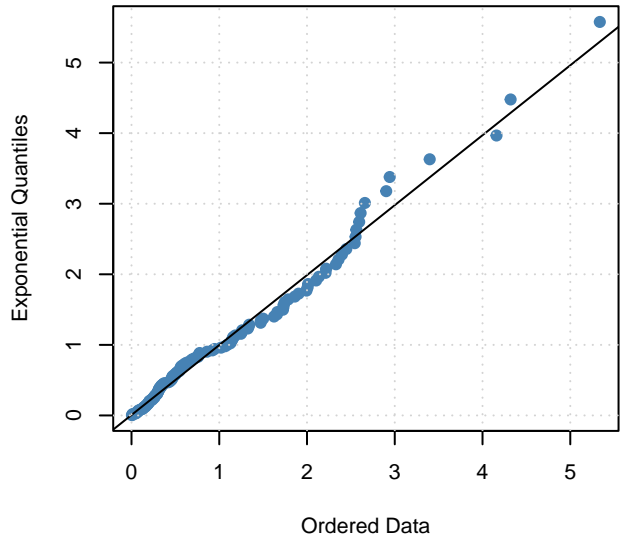
### Scatterplot of Residuals



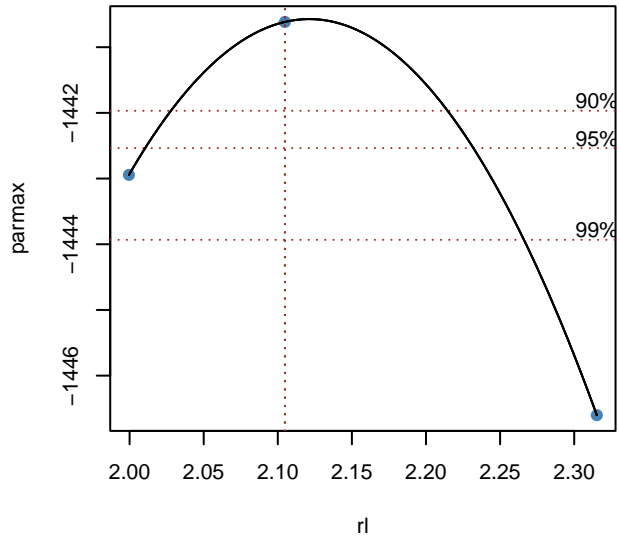
### GEV Residual Histogram



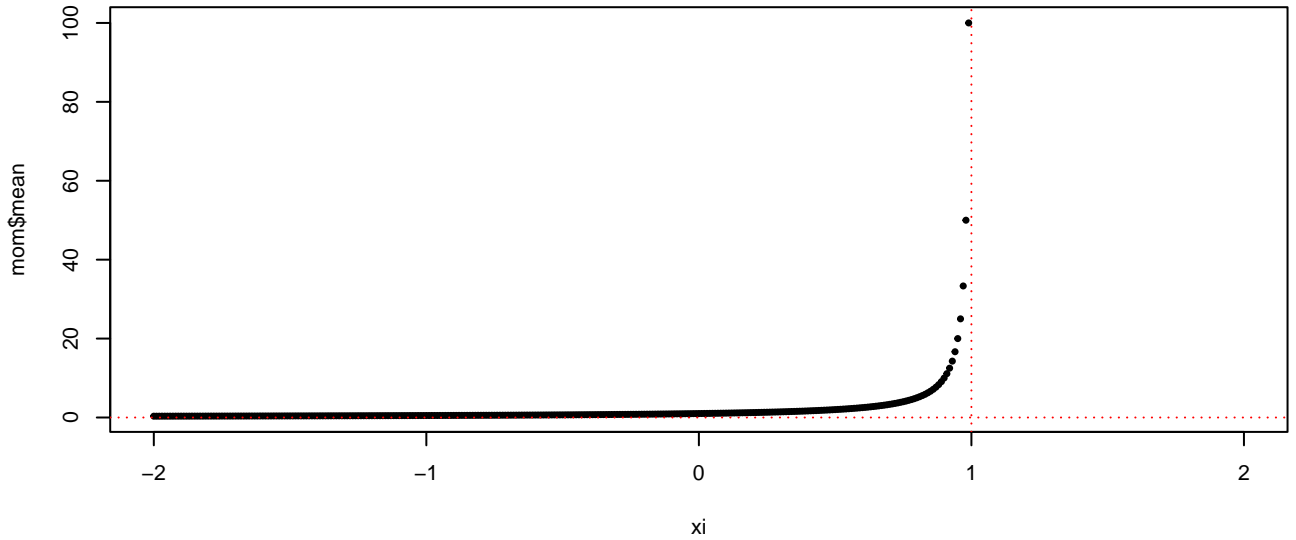
### QQ Plot of Residuals



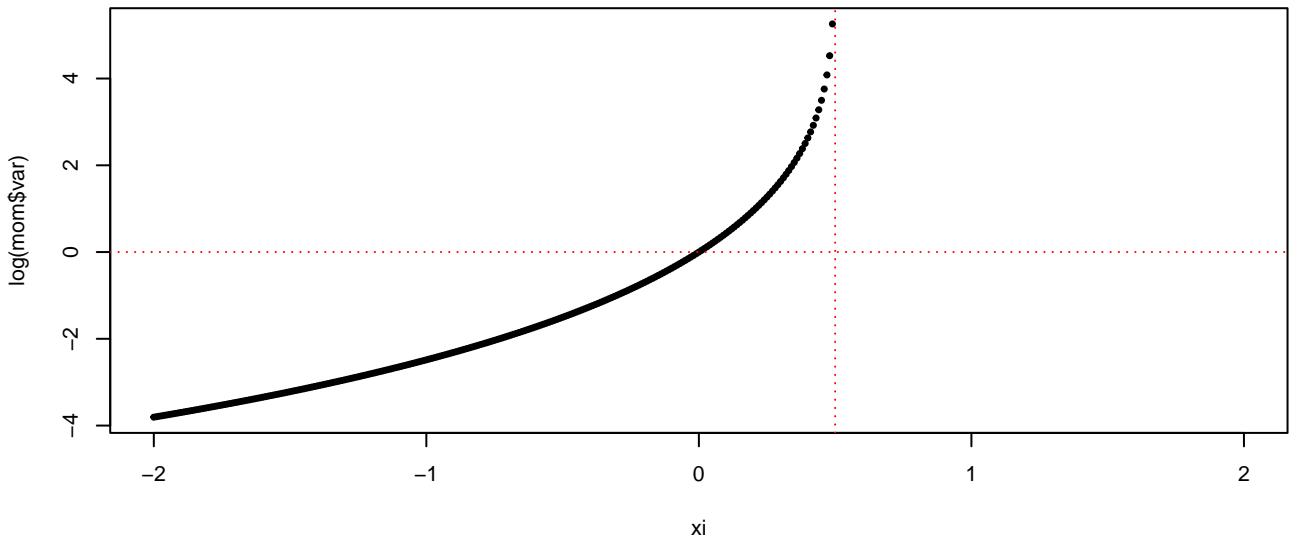
## 20 Blocks Return Level



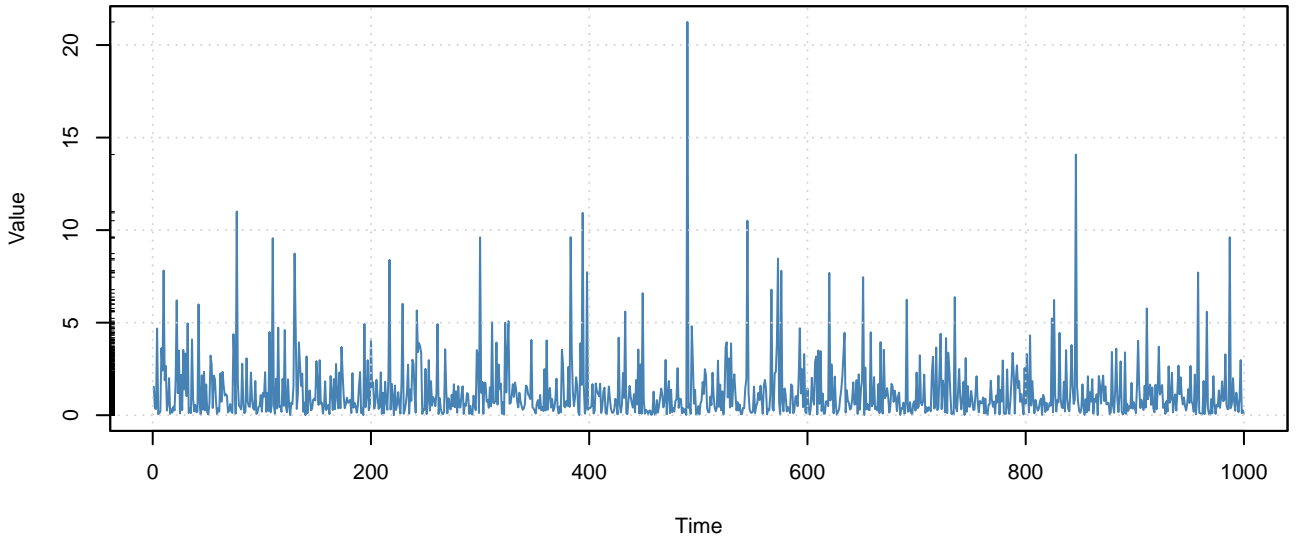
### Mean



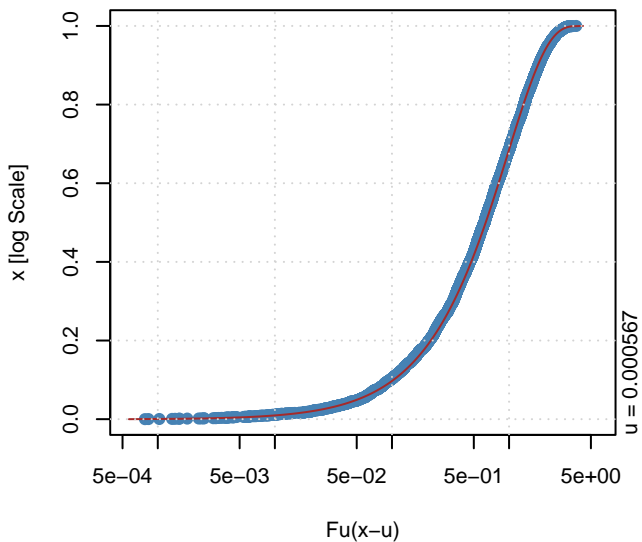
### log Variance



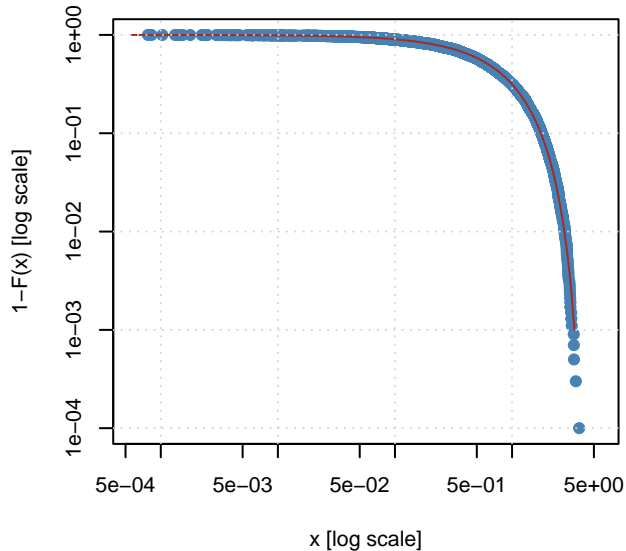
# GPD



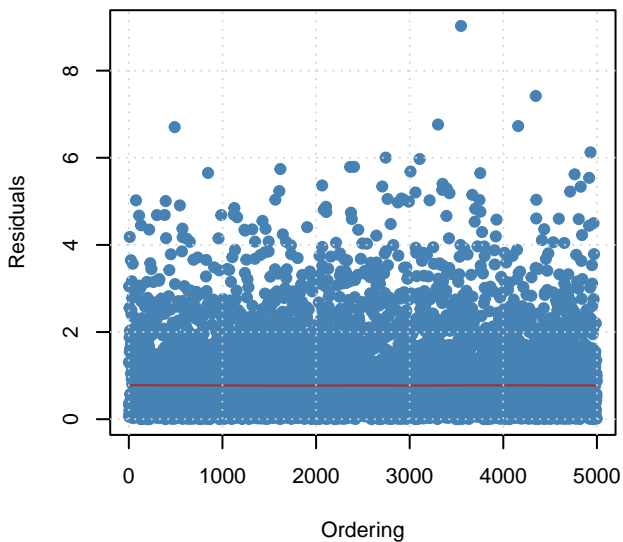
### Excess Distribution



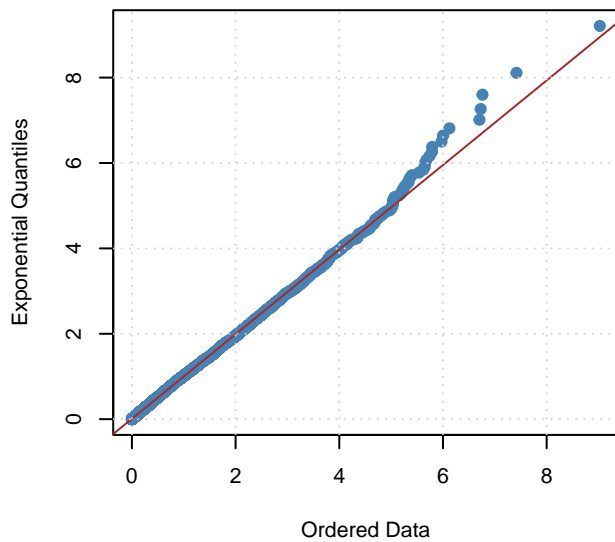
### Tail of Underlying Distribution



### Scatterplot of Residuals

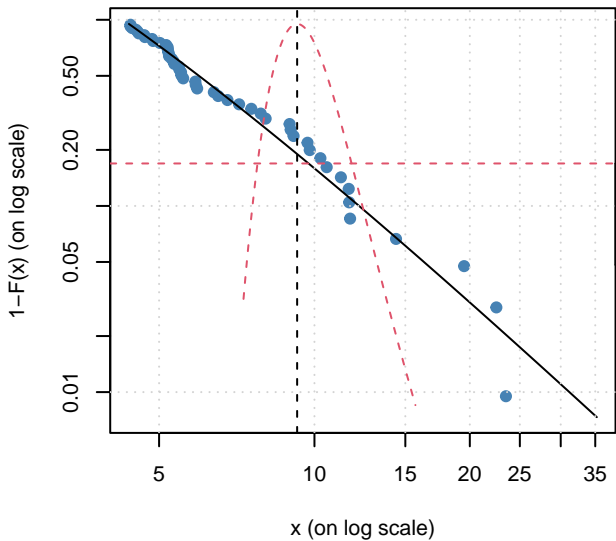


### QQ-Plot of Residuals

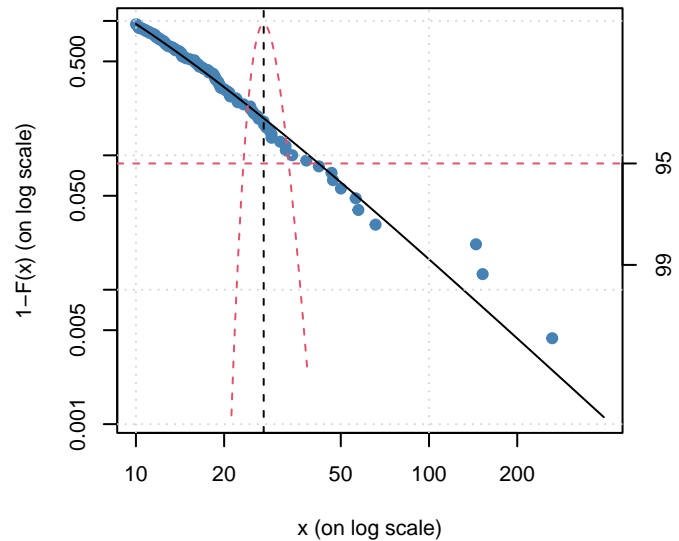




### Tail Estimate Plot



### Tail Estimate Plot



Threshold

8.060

3.160

2.470

1.930

1.650

1.290

1.070

0.908

0.757

20

15

10

5

0

Quantiles: x

15

48

81

115

165

215

265

316

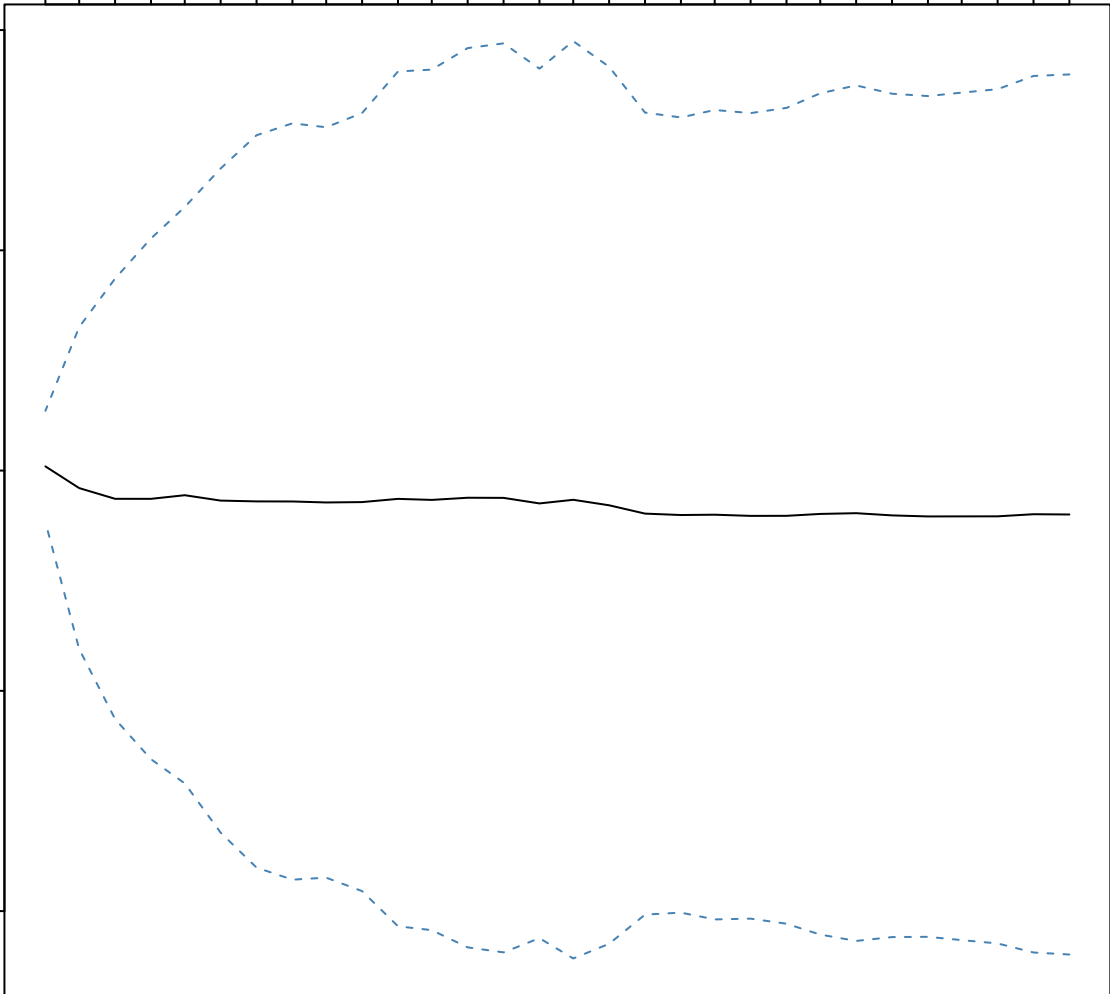
366

416

466

Exceedances

p = 0.99 | ci = 0.95 | start = 15 | end = 500



Threshold

29.10 12.40 7.99 6.14 5.33 4.64 4.17 3.85 3.48 3.21

Quantiles: x

80

60

40

20

0

15

48

81

115

165

215

265

316

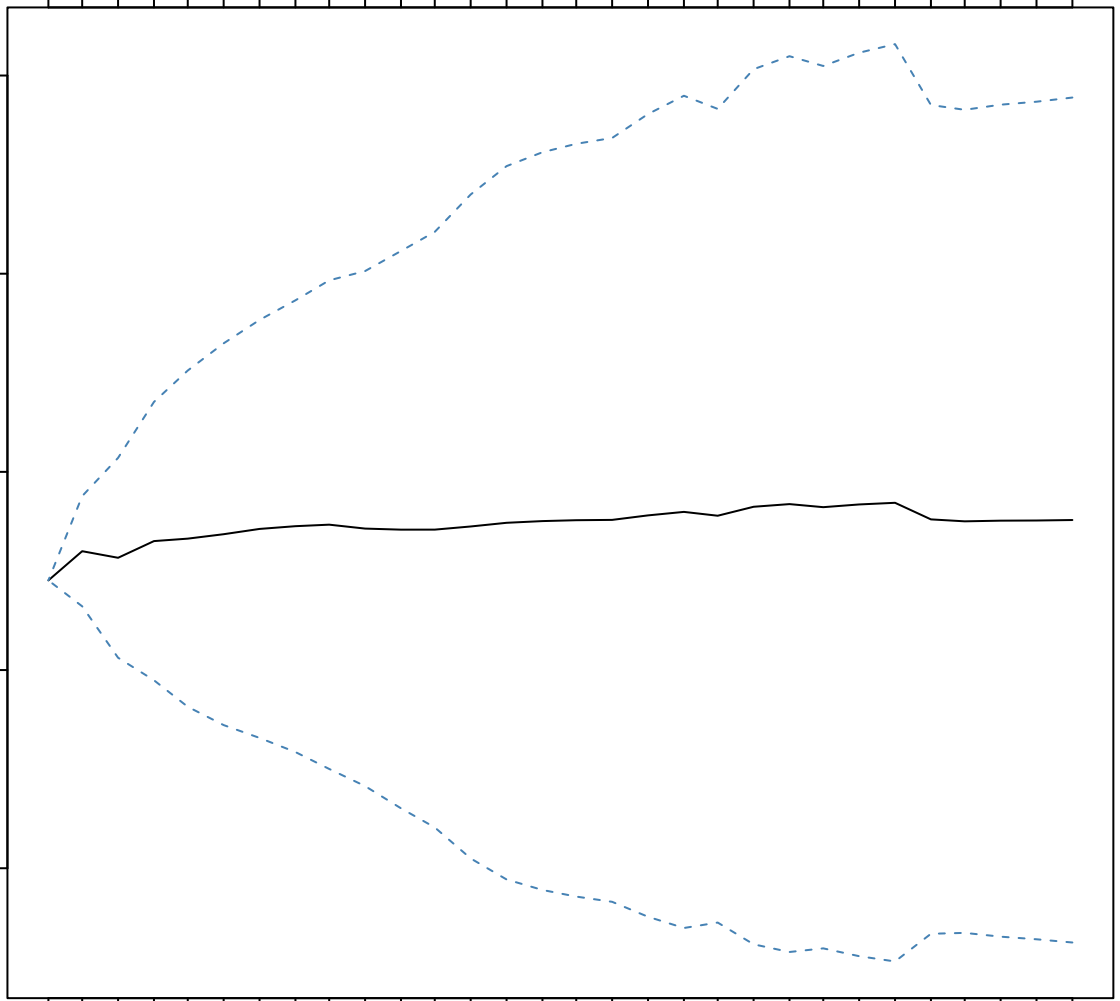
366

416

466

Exceedances

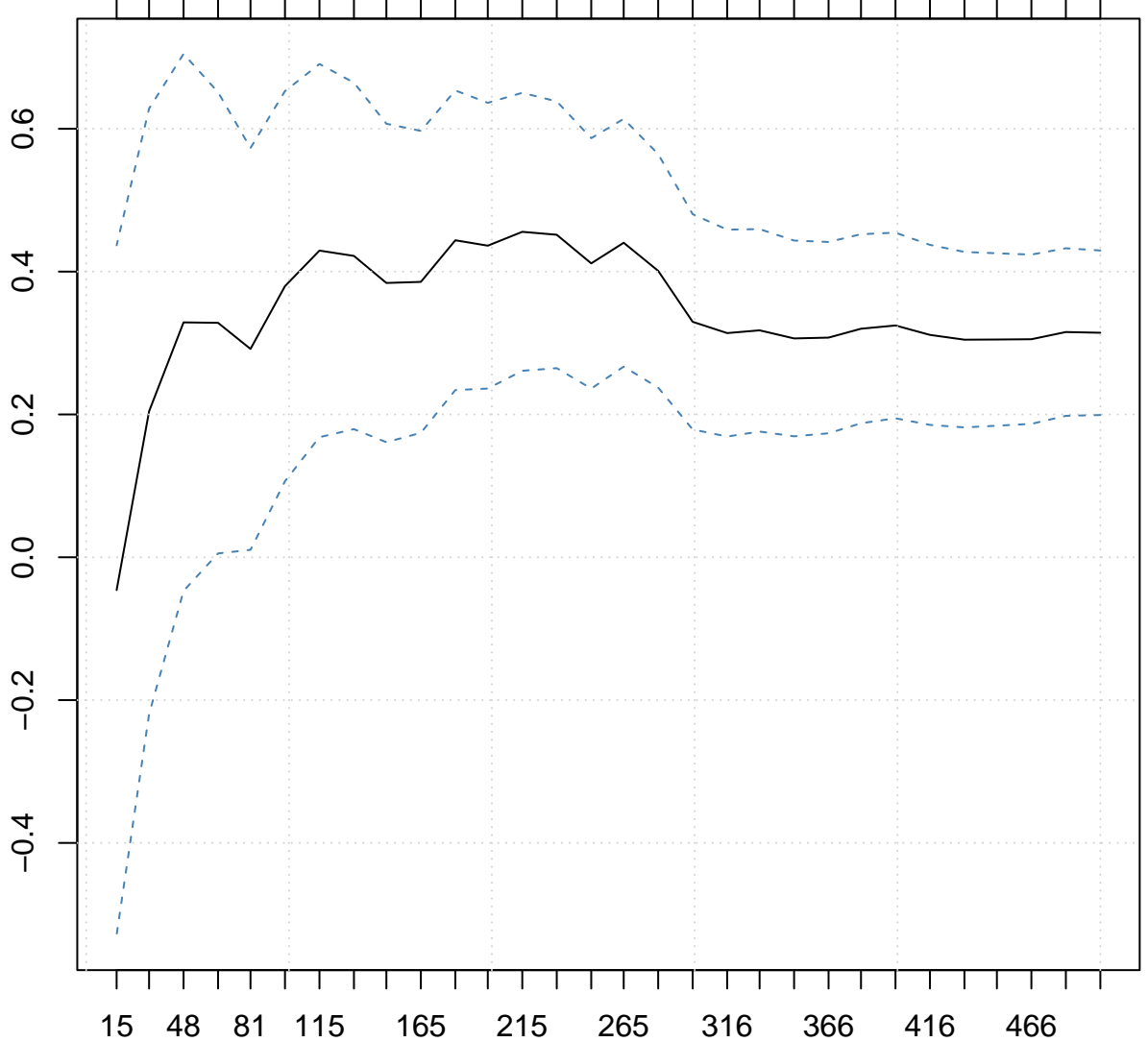
p = 0.993 | ci = 0.95 | start = 15 | end = 500



Threshold

8.060 3.160 2.470 1.930 1.650 1.290 1.070 0.908 0.757

Shape: x



ci = 0.95 | start = 15 | end = 500

Exceedances

Threshold

29.10 12.40 7.99 6.14 5.33 4.64 4.17 3.85 3.48 3.21

Shape: x

1.0

0.5

0.0

15

48

81

115

165

215

265

316

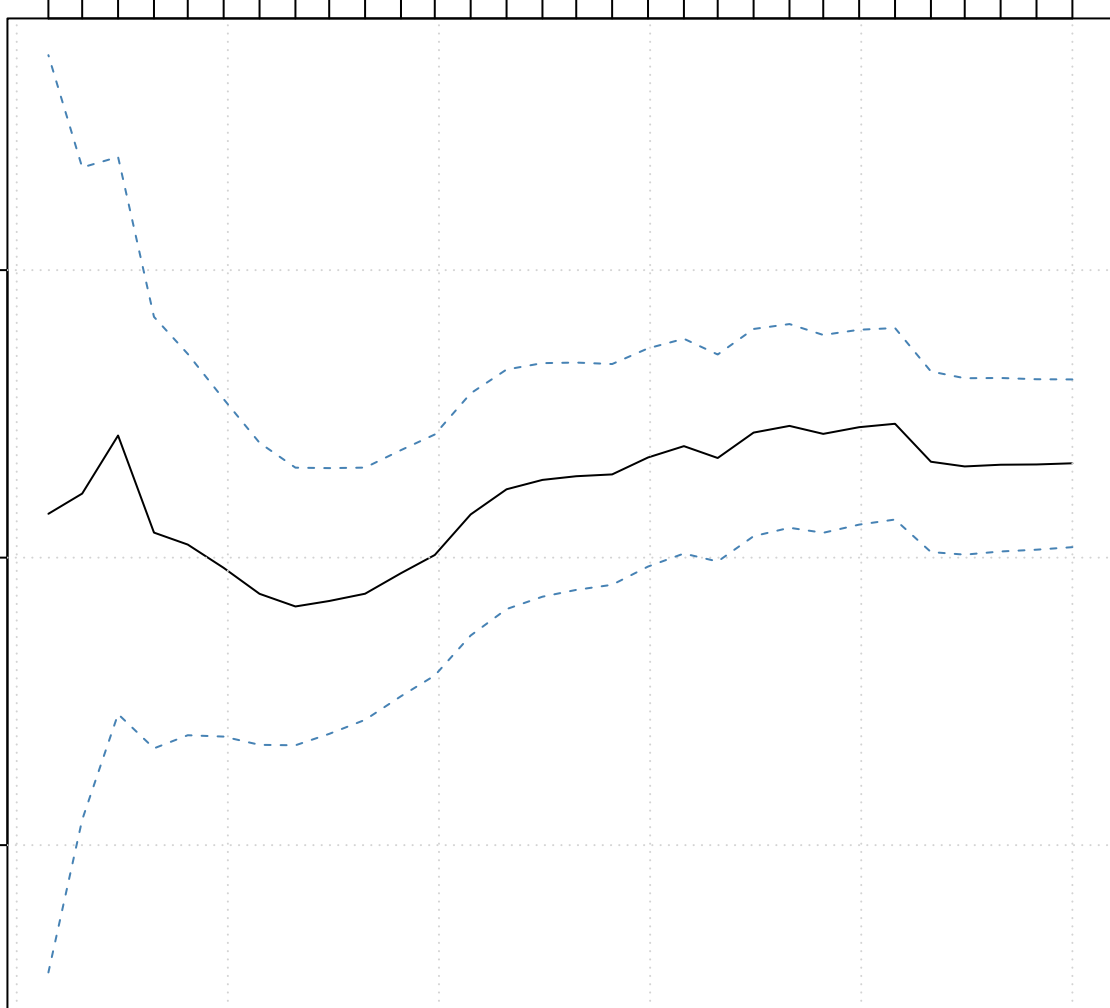
366

416

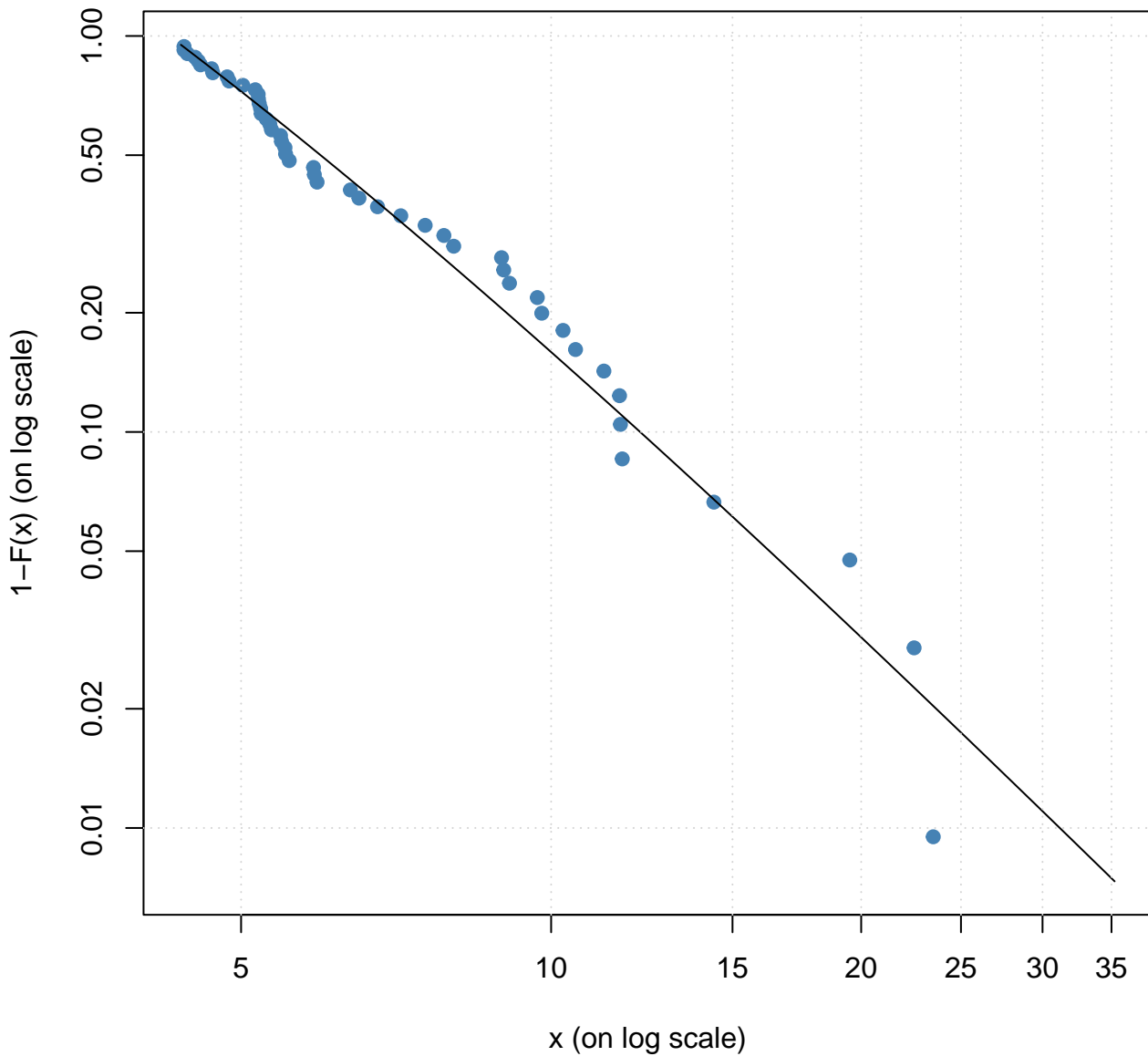
466

Exceedances

ci = 0.95 | start = 15 | end = 500



# Tail Estimate Plot



# Tail Estimate Plot

