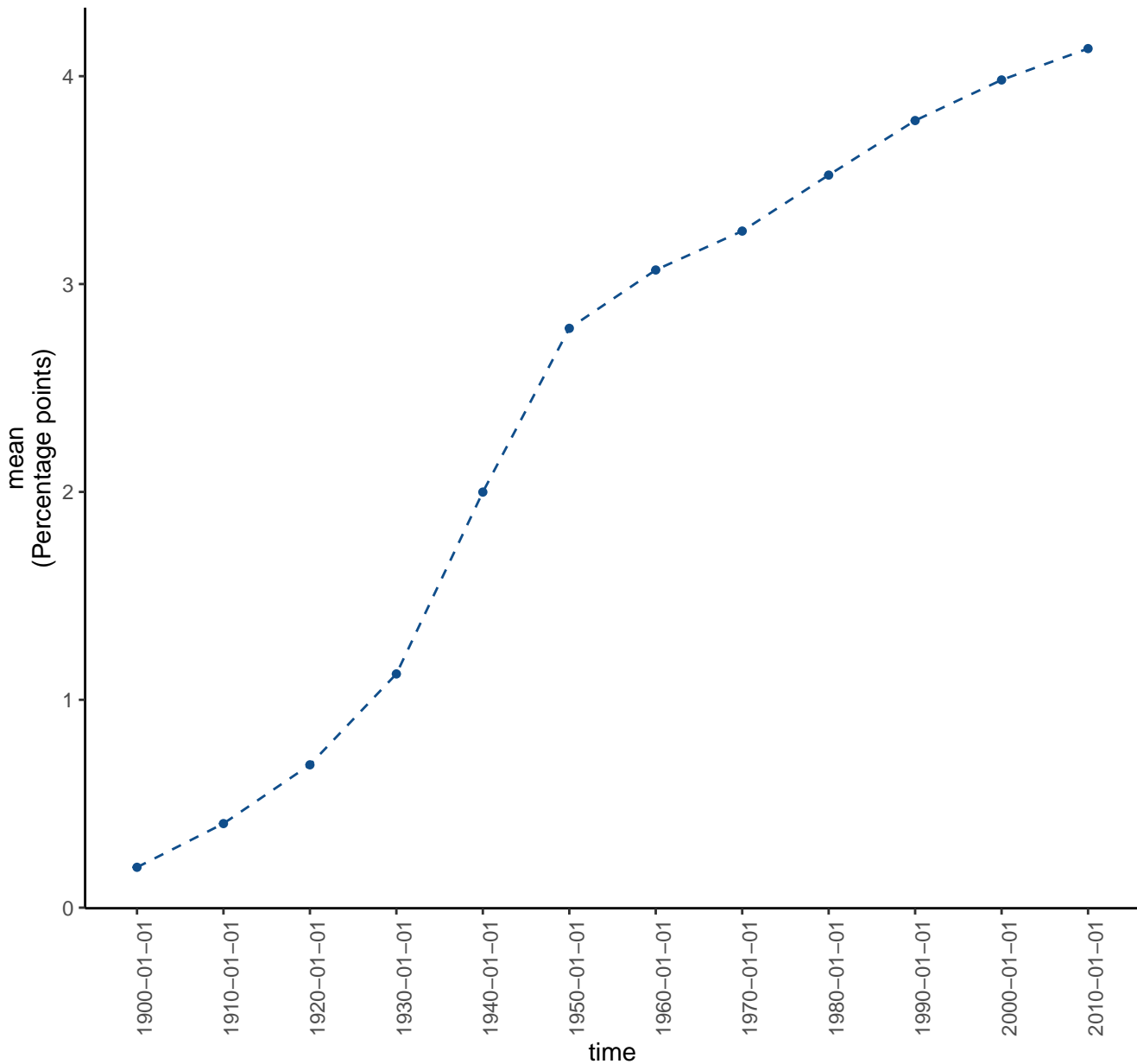


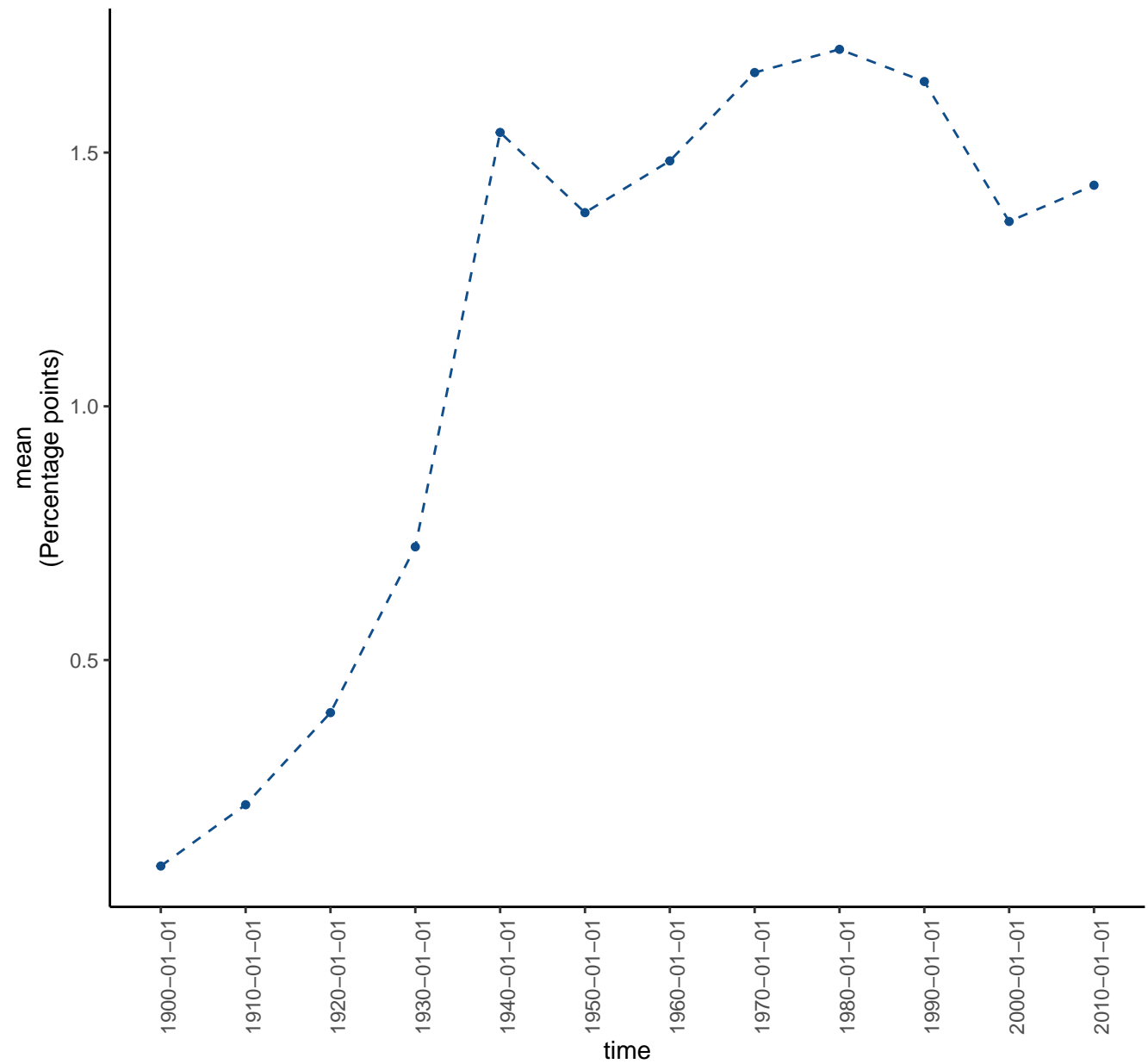
Local bird diversity (cSAR/BES-SIM)

Relative change in the number of species (%) – forest bird species



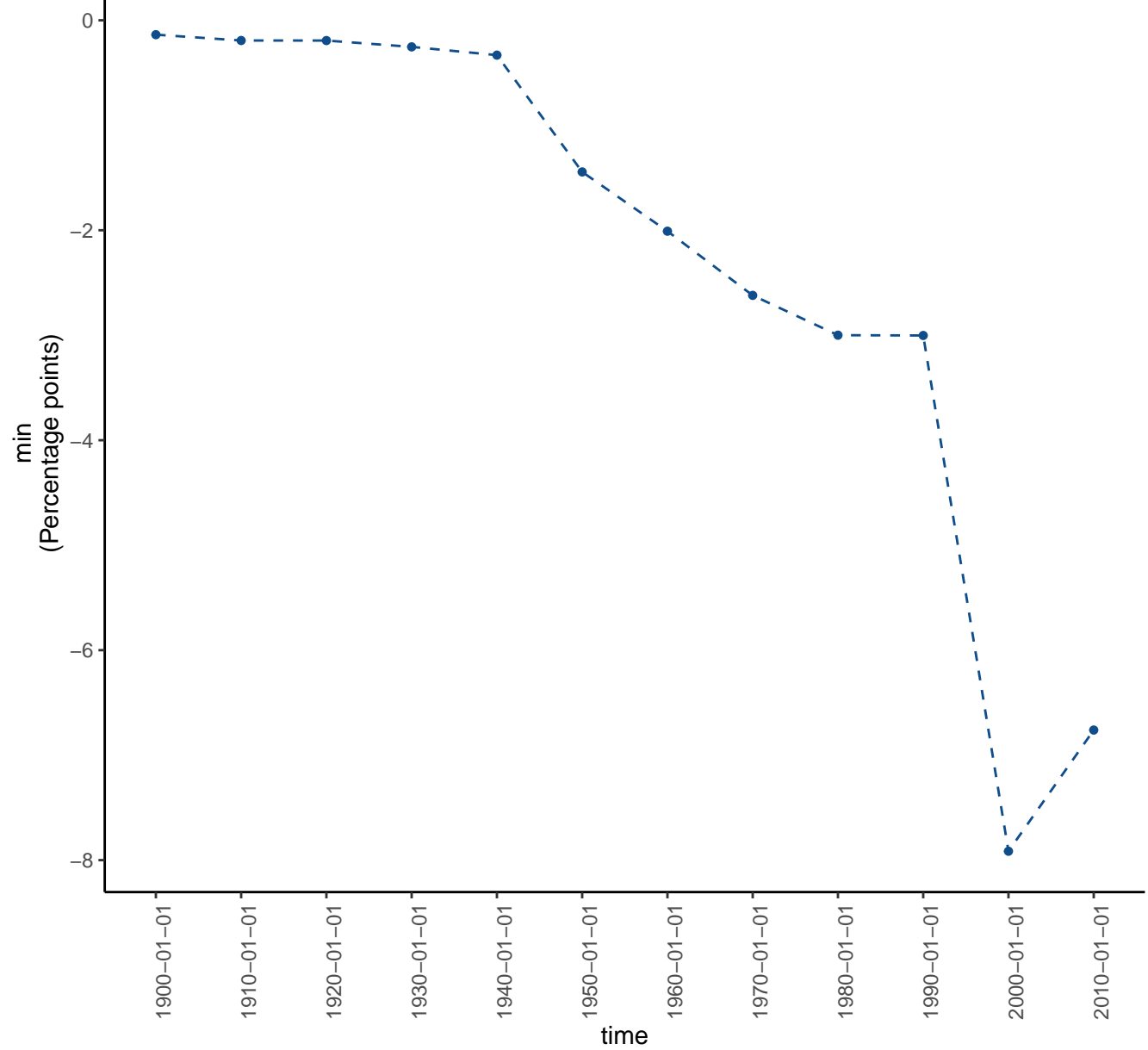
Local bird diversity (cSAR/BES-SIM)

Relative change in the number of species (%) – forest bird species



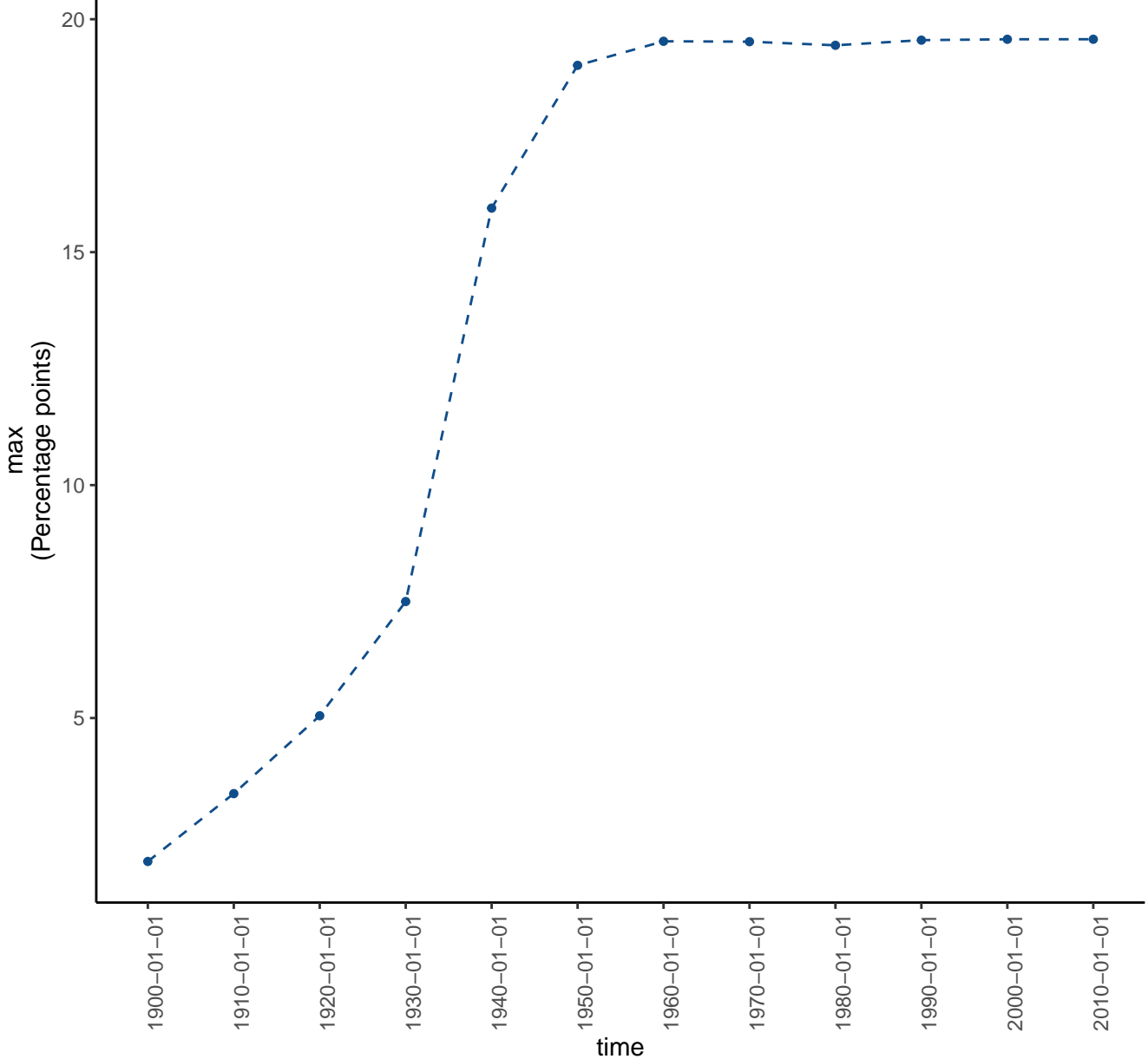
Local bird diversity (cSAR/BES-SIM)

Relative change in the number of species (%) – forest bird species



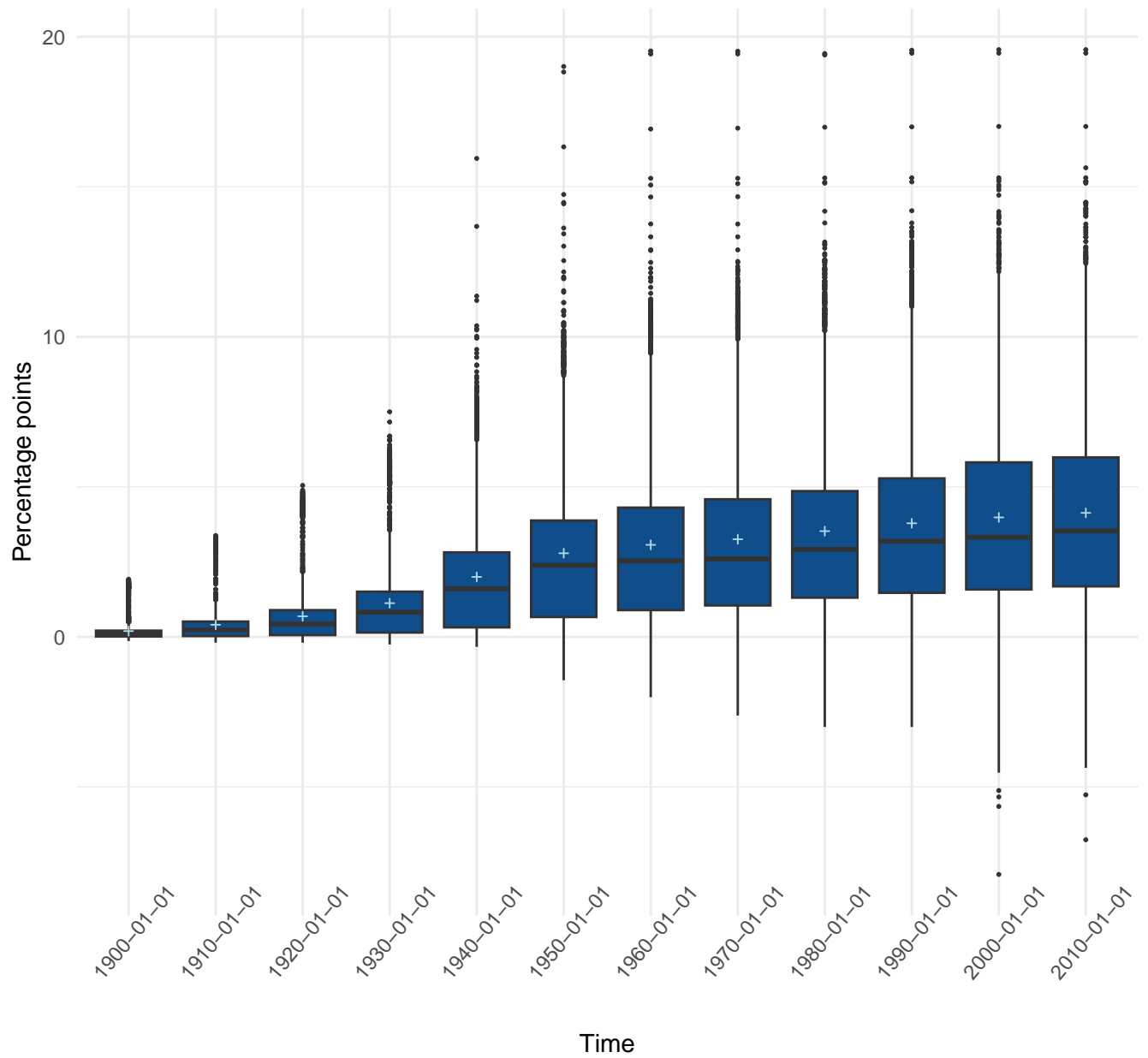
Local bird diversity (cSAR/BES-SIM)

Relative change in the number of species (%) – forest bird species



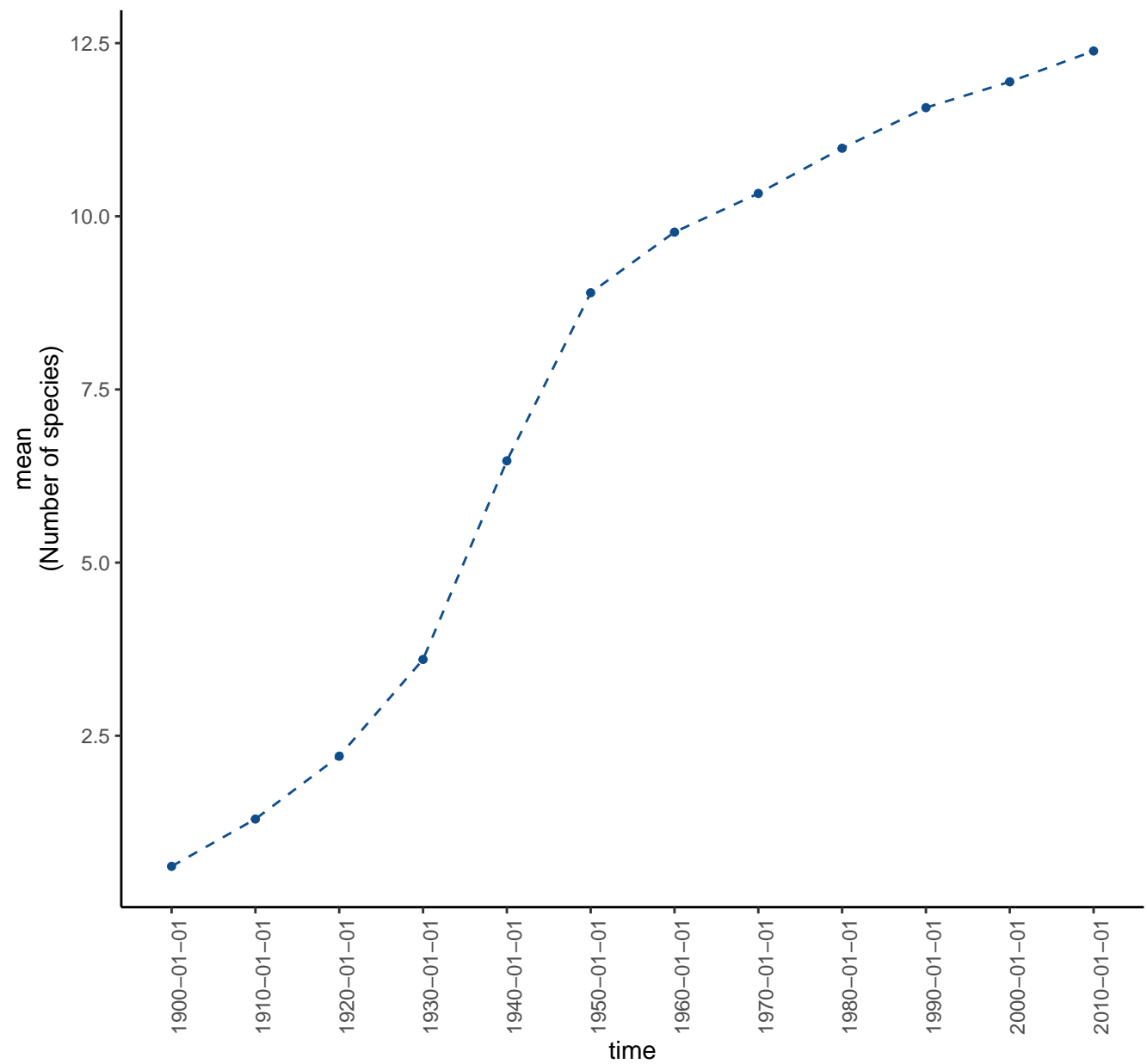
Local bird diversity (cSAR/BES-SIM)

Relative change in the number of species (%) – forest bird species



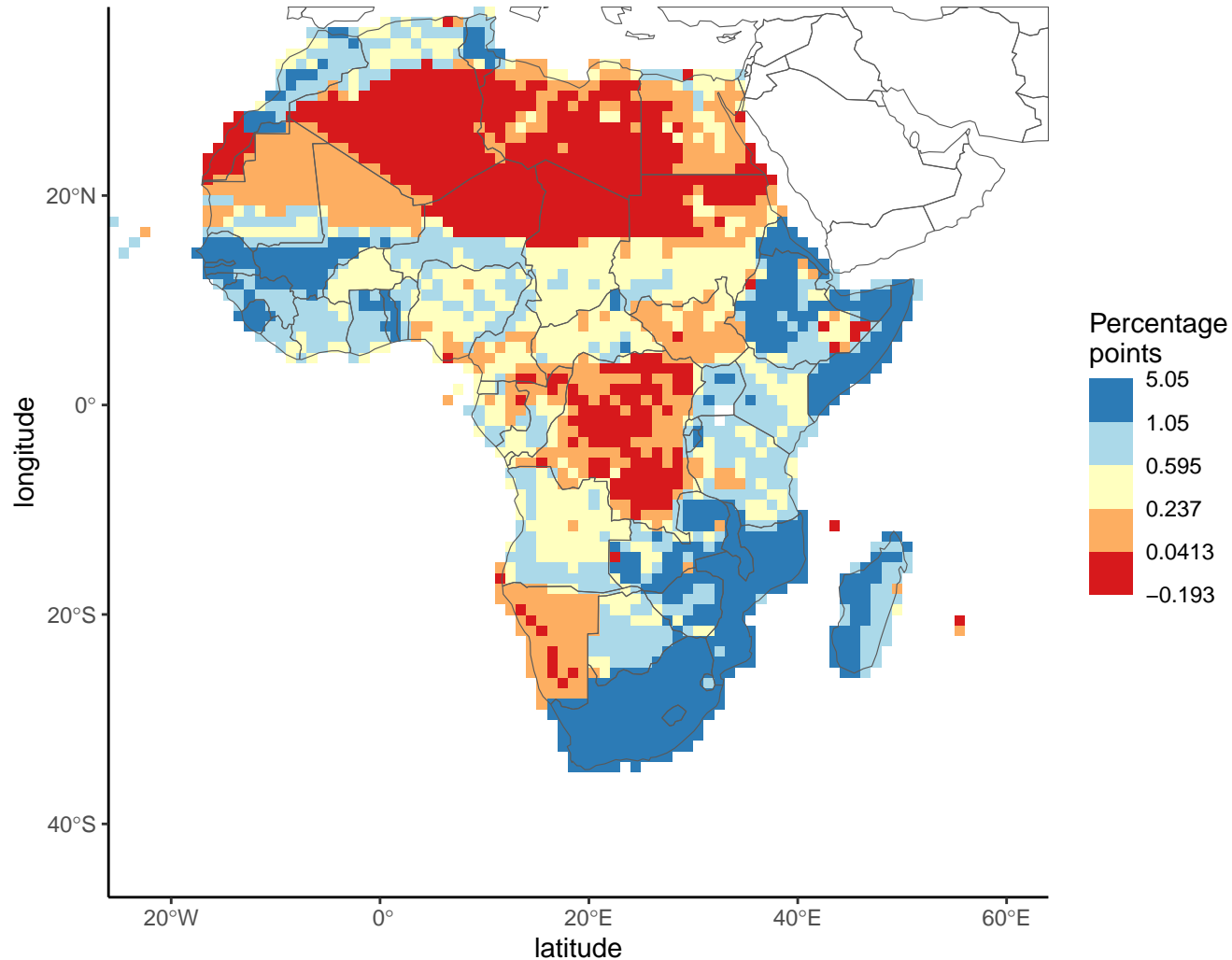
Local bird diversity (cSAR/BES-SIM)

Absolute change in the number of species – forest bird species



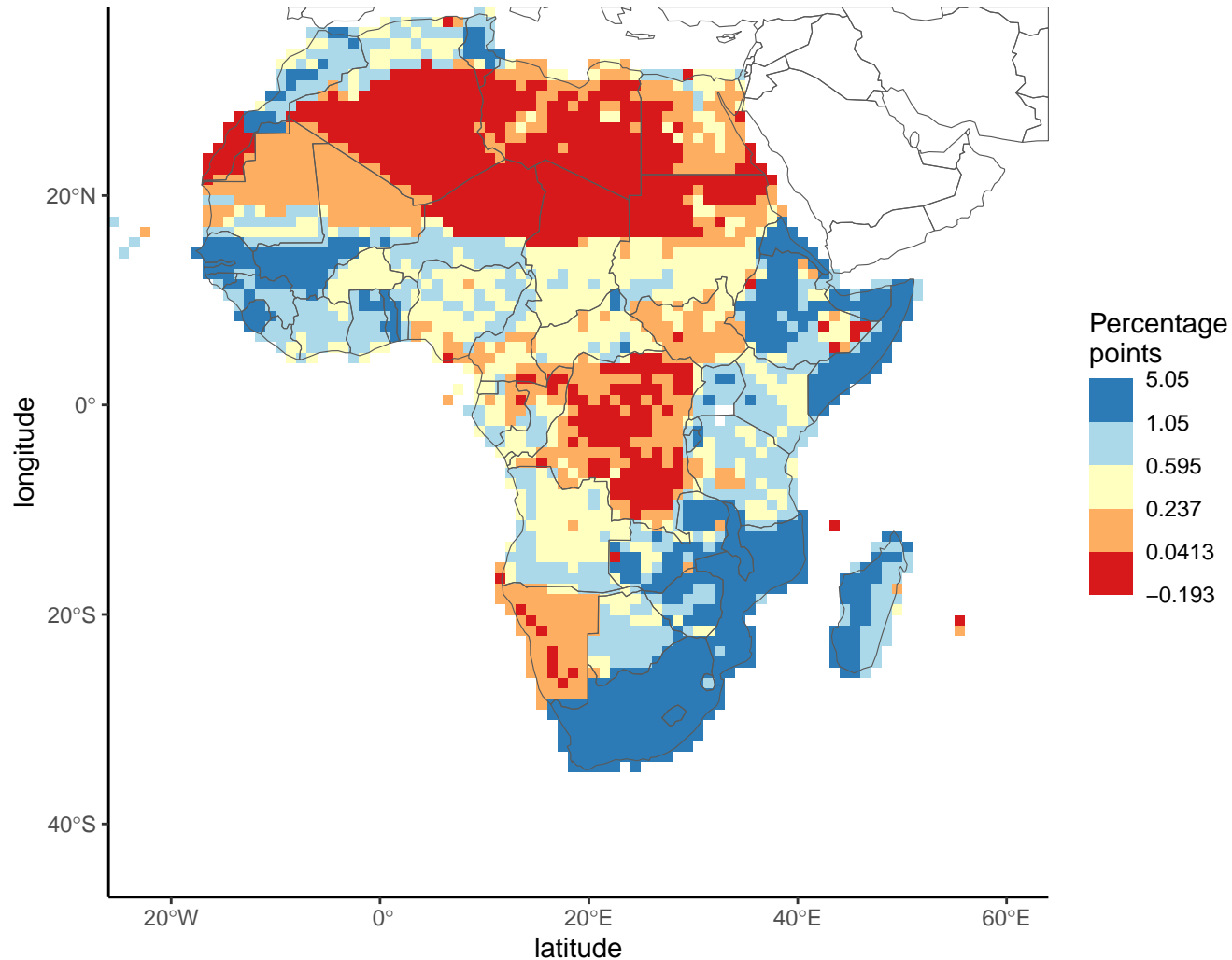
Local bird diversity (cSAR/BES-SIM)

Relative change in the number of species (%) – forest bird species (1920–01–01)



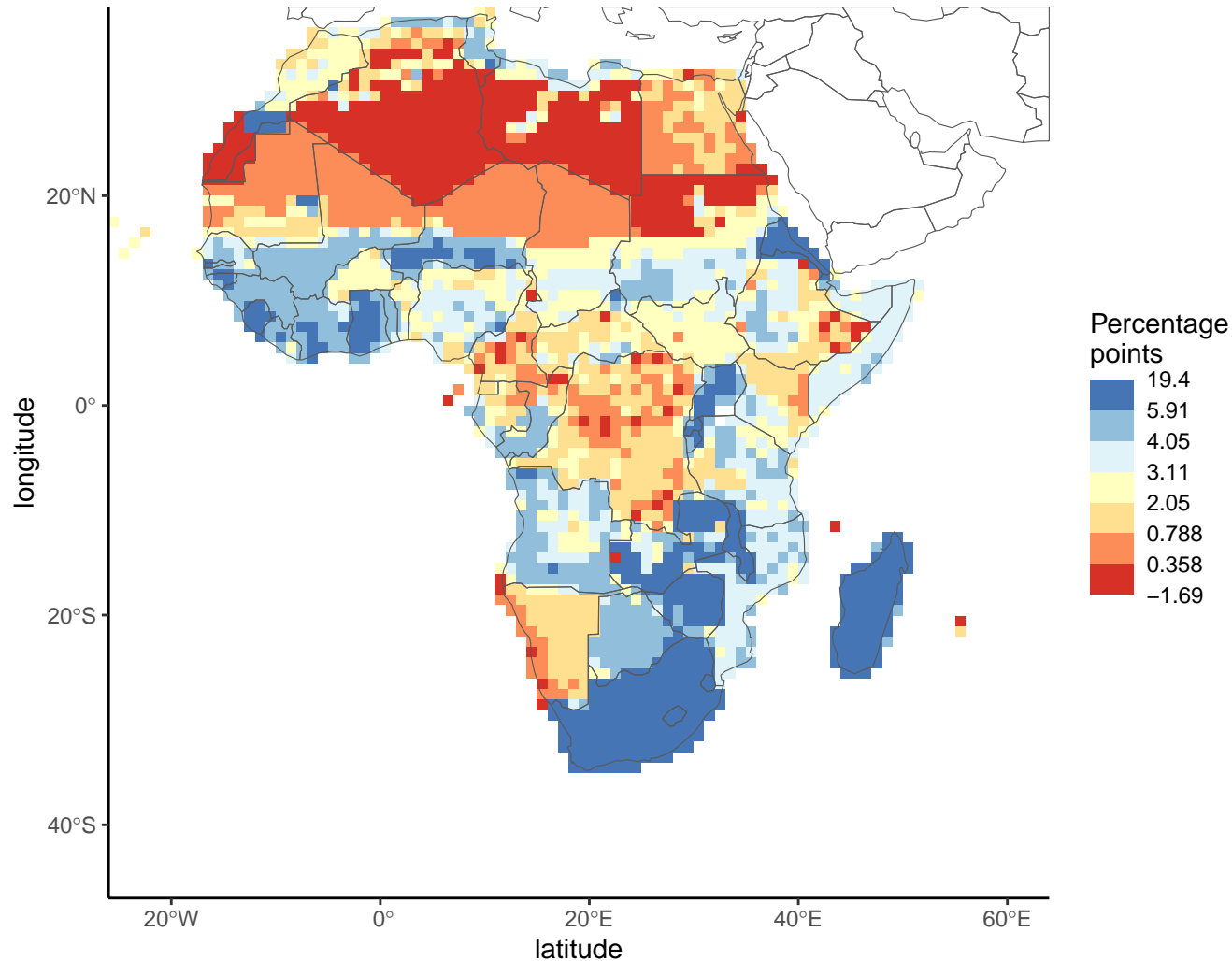
Local bird diversity (cSAR/BES-SIM)

Relative change in the number of species (%) – forest bird species (1920–01–01)



Local bird diversity (cSAR/BES-SIM)

Relative change in the number of species (%) – all bird species (1950-01-01)



Local bird diversity (cSAR/BES-SIM)

Relative change in the number of species (%) – all bird species (1950-01-01)

