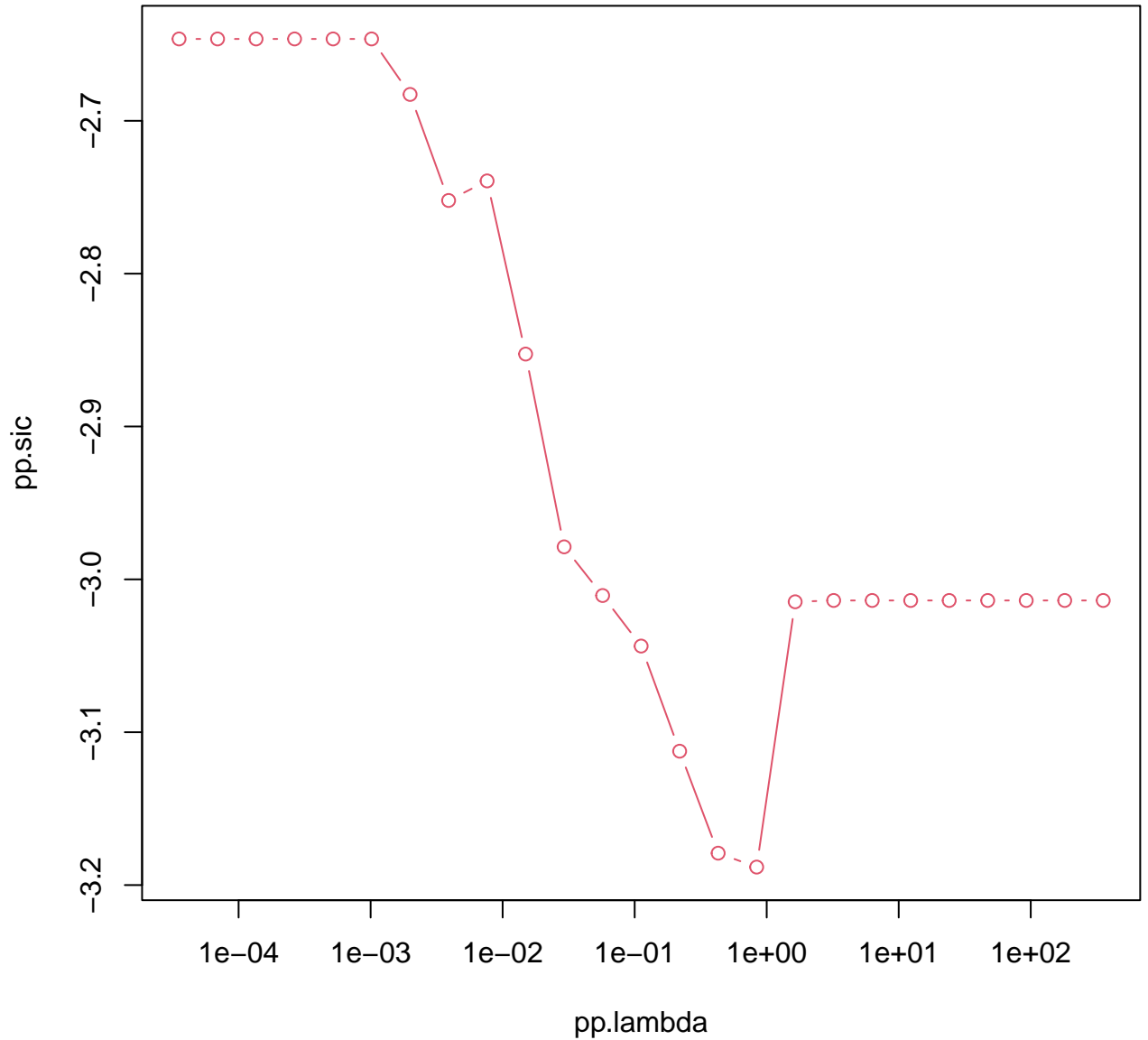
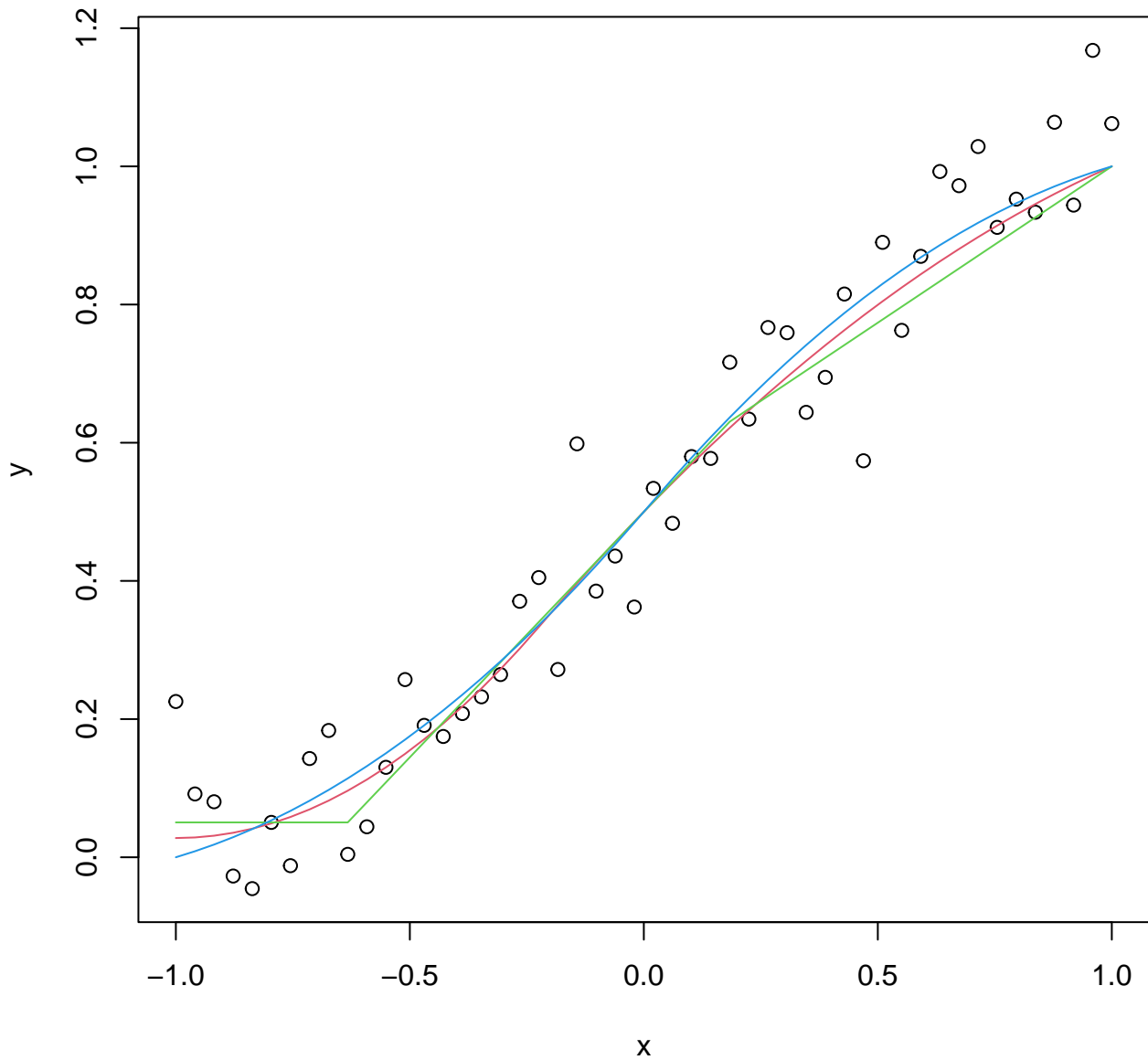
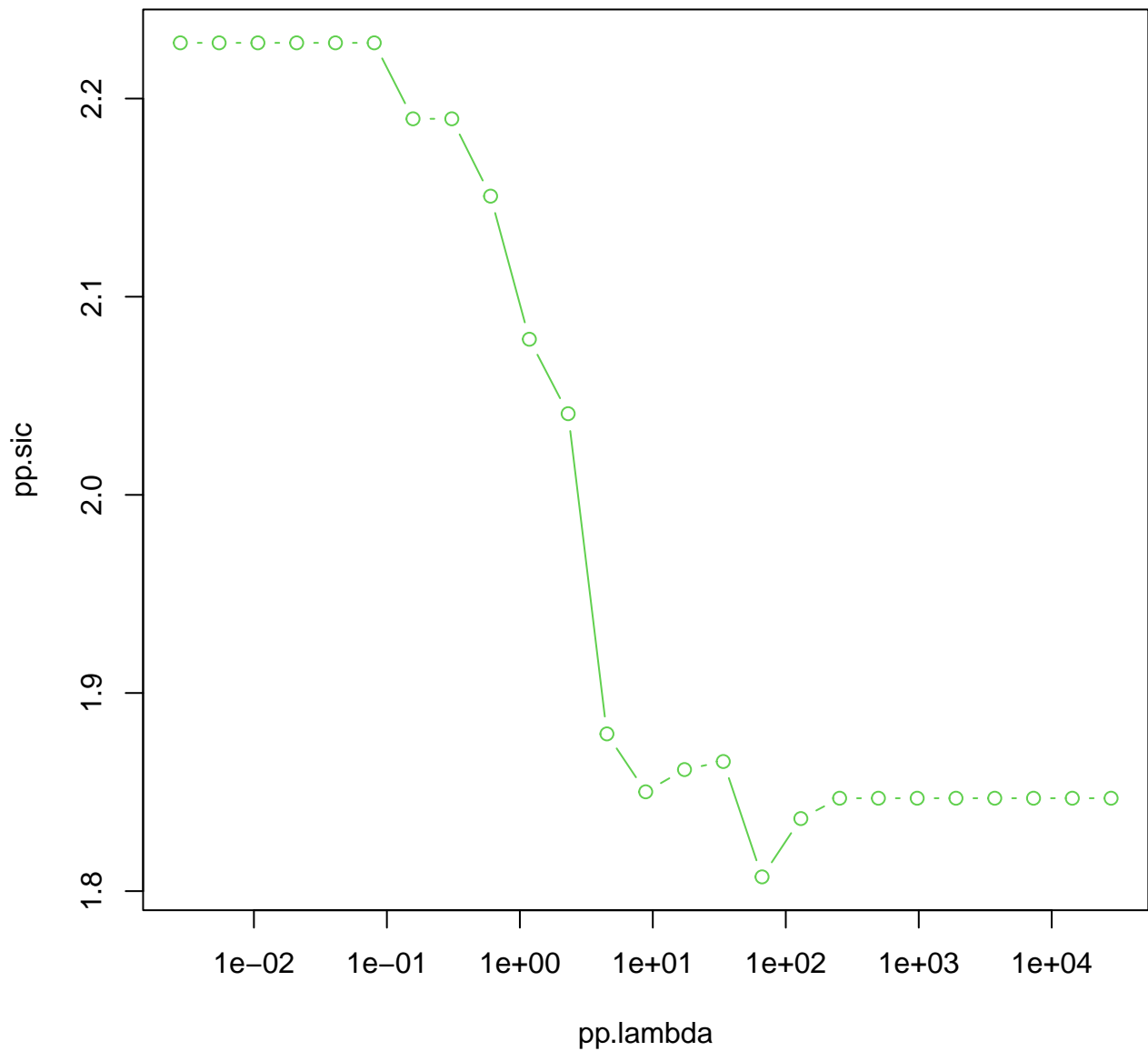


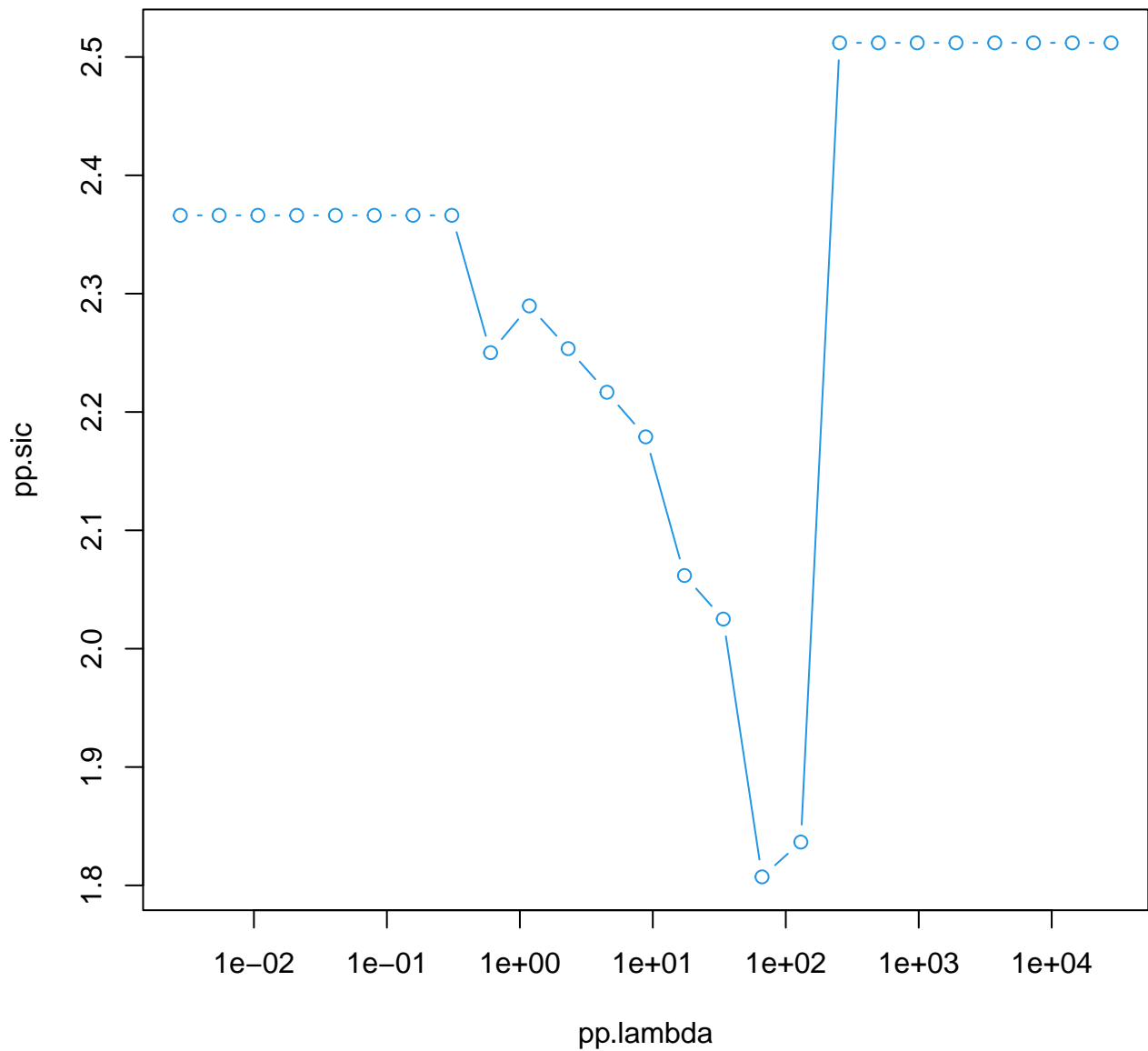
**cobs(x = x, y = y, constraint = "increase", lambda = -1, pointwise = con,
trace = 3)**



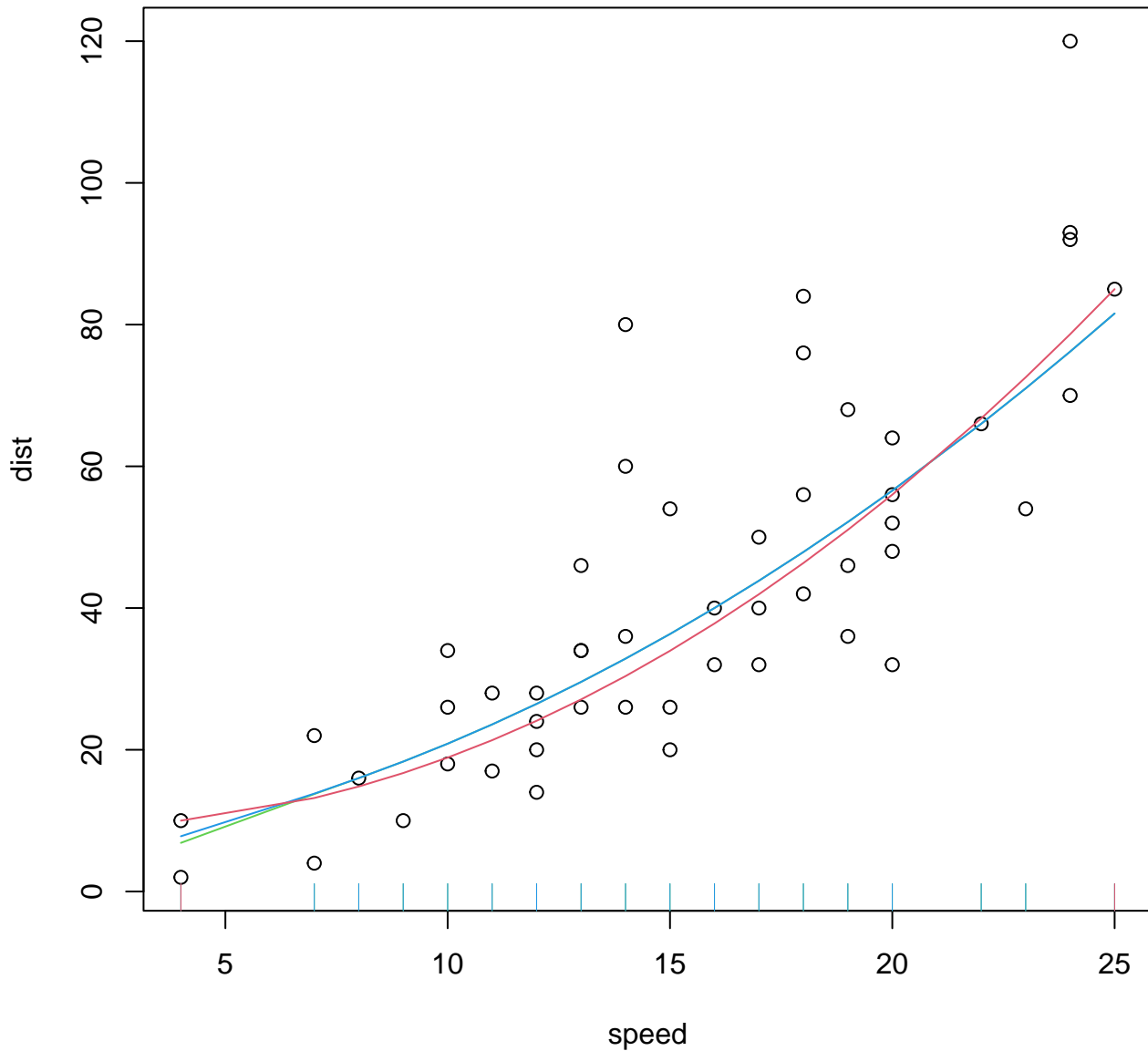
cobs(x,y, constraint="increase", pointwise = *)



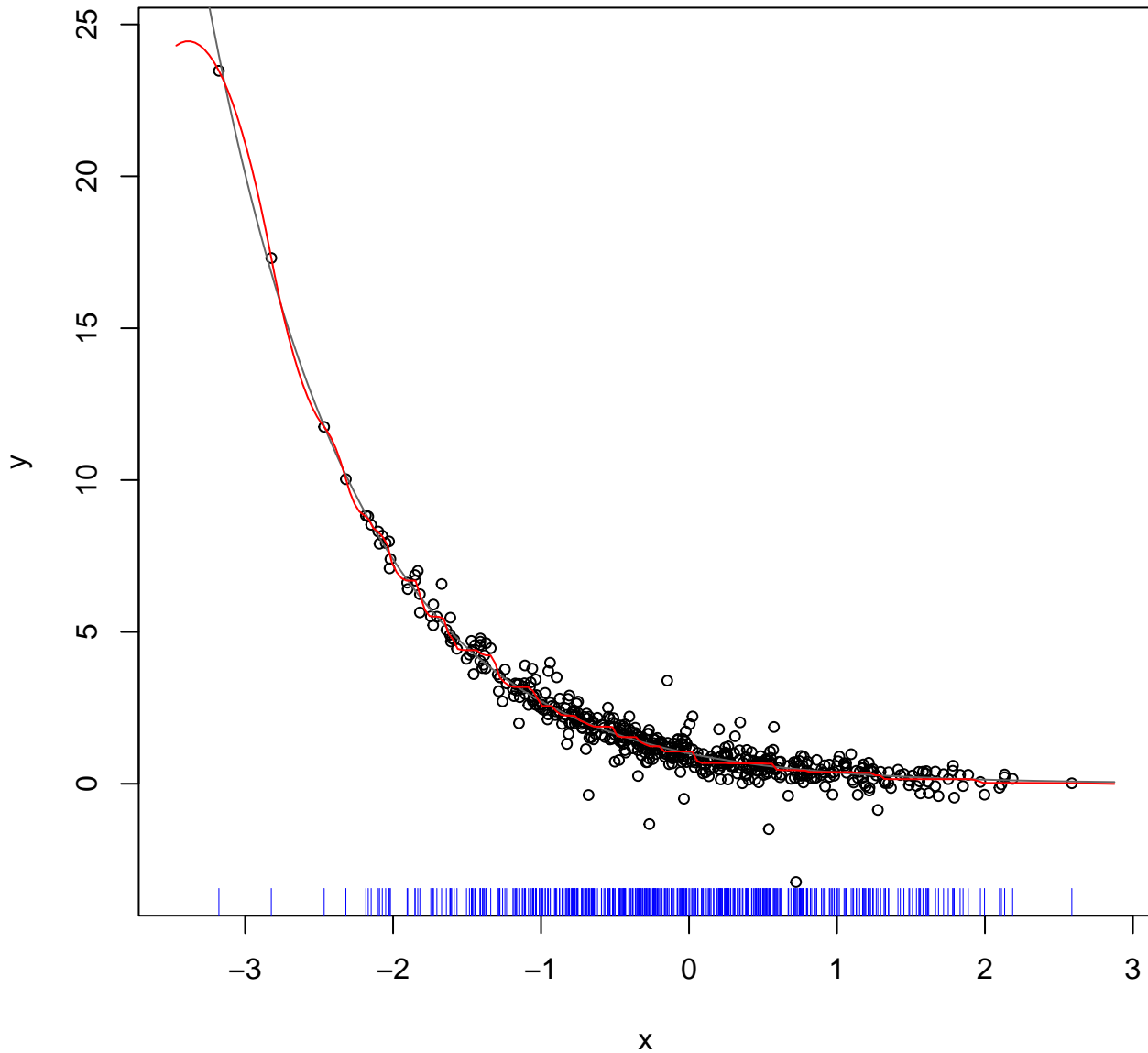




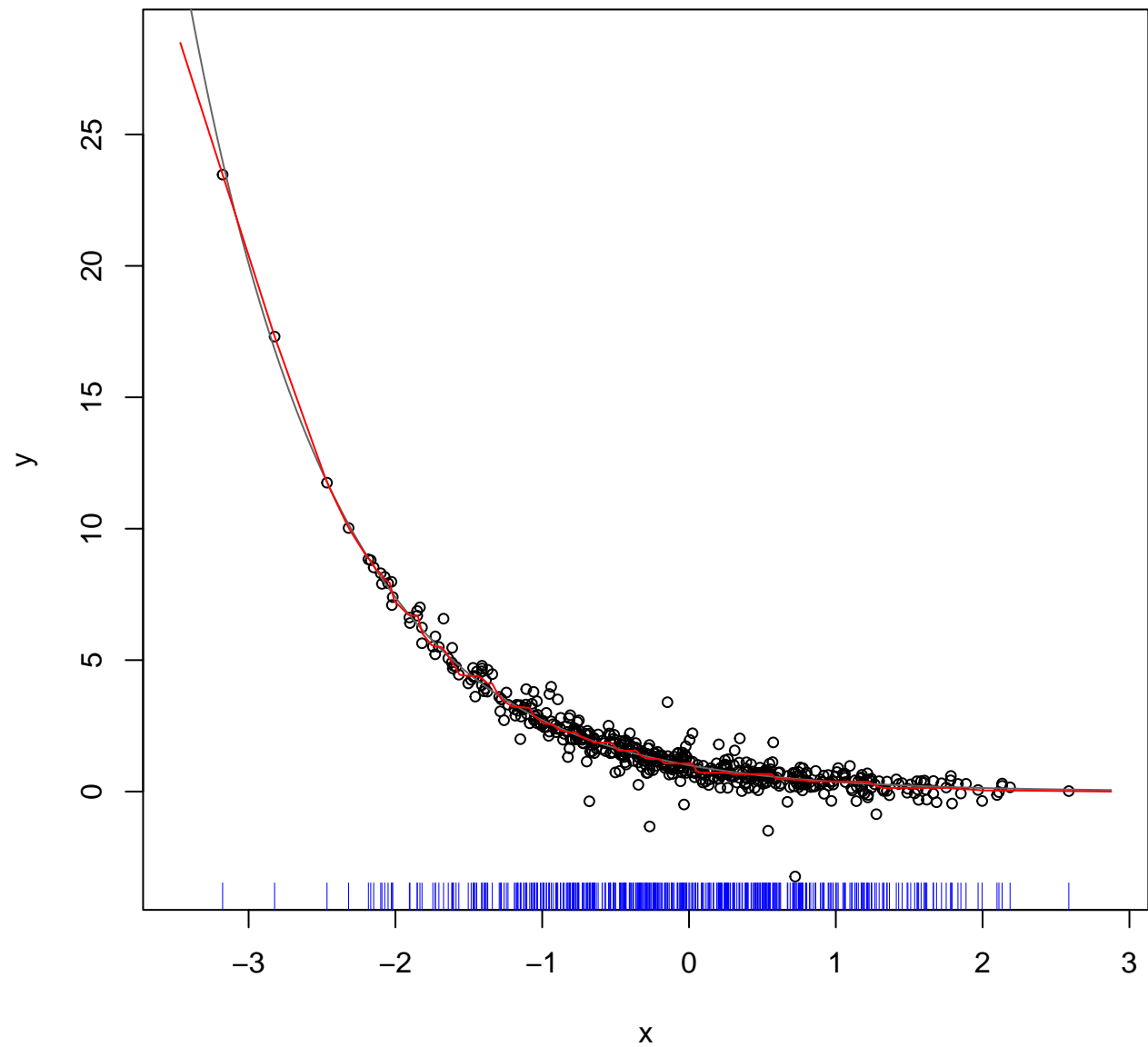
cobs(speed,dist, ..) for data(cars)



Artificial (x,y), N=500 : `interpolating' cobs()



N=500, `interpolate' cobs(x = x, y = y, constraint = "decrease", knots = ux, nkno
Artificial, N=500, `interpolate' degree = 1)



Artificial (x,y), N=500 : cobs(*, lambda = -1)

$R^2 = 95.7\%$

