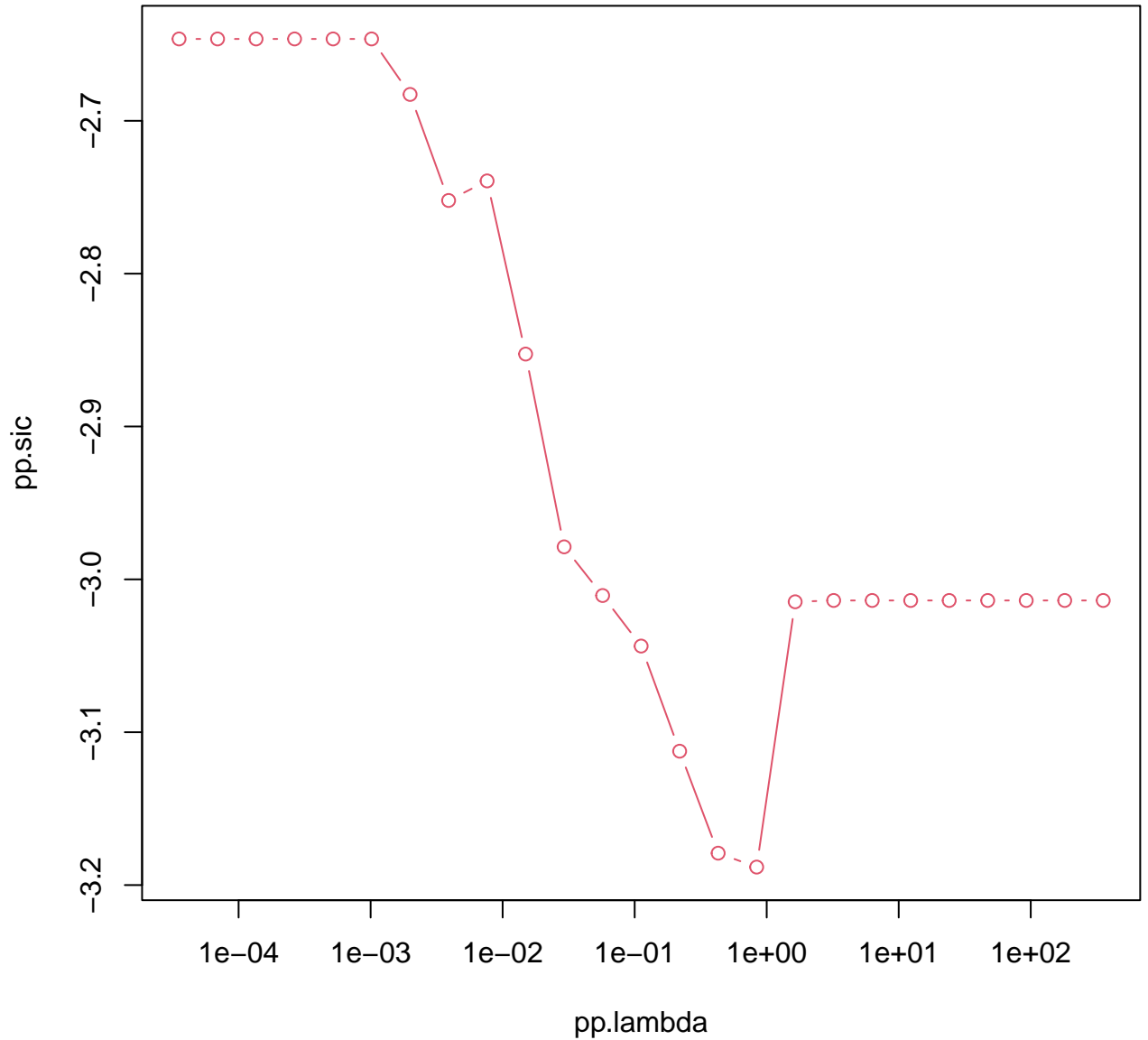
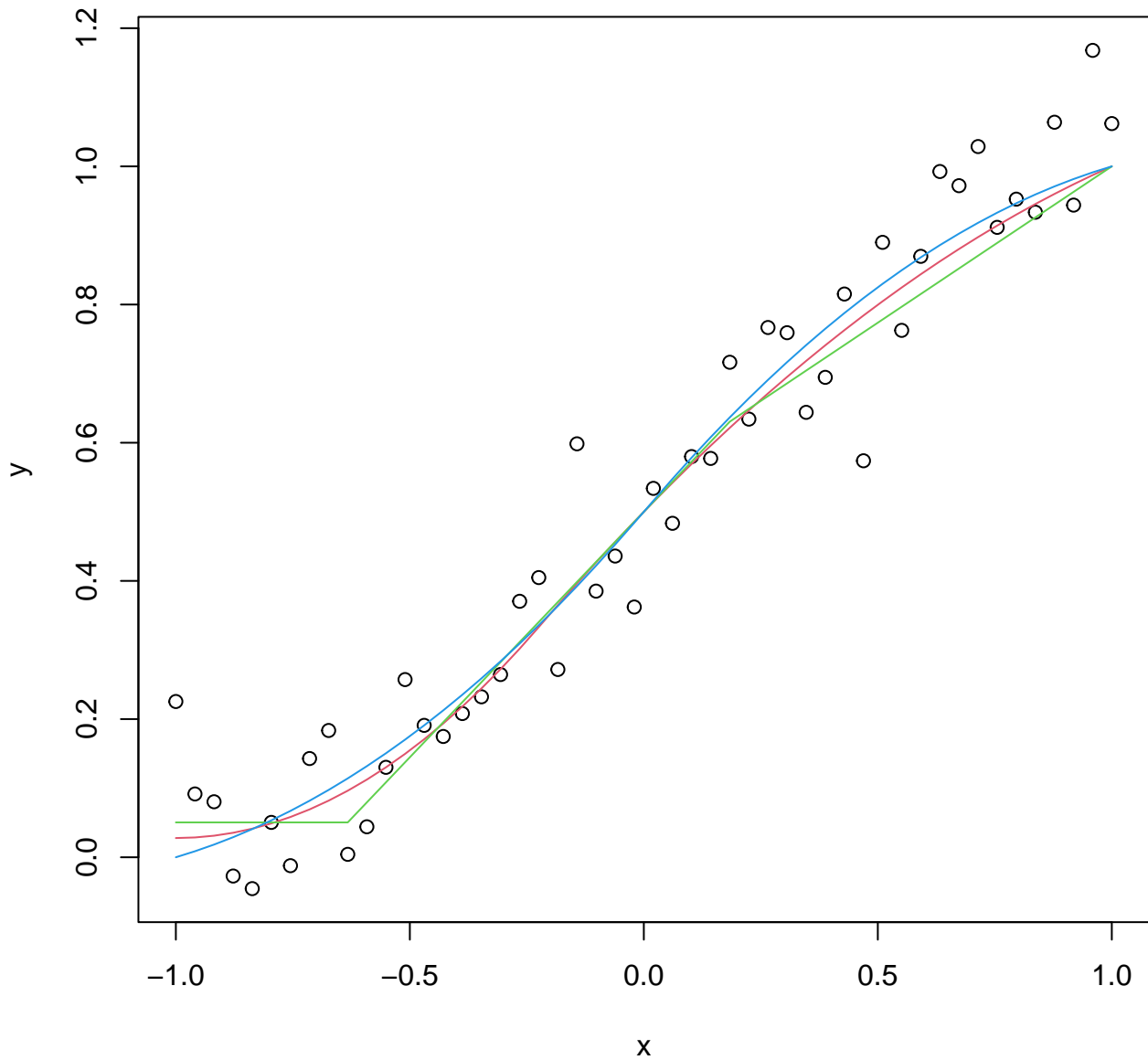
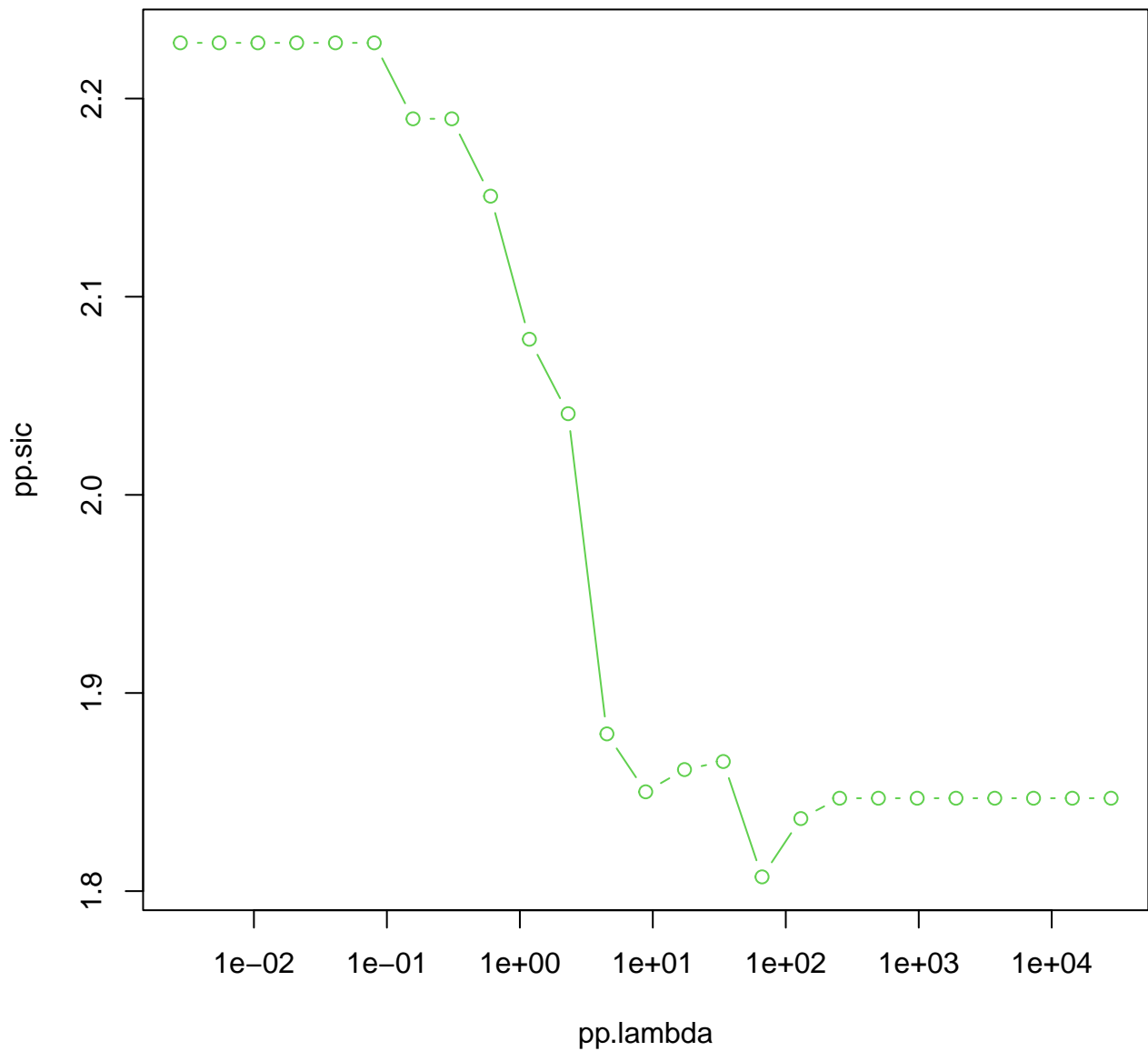


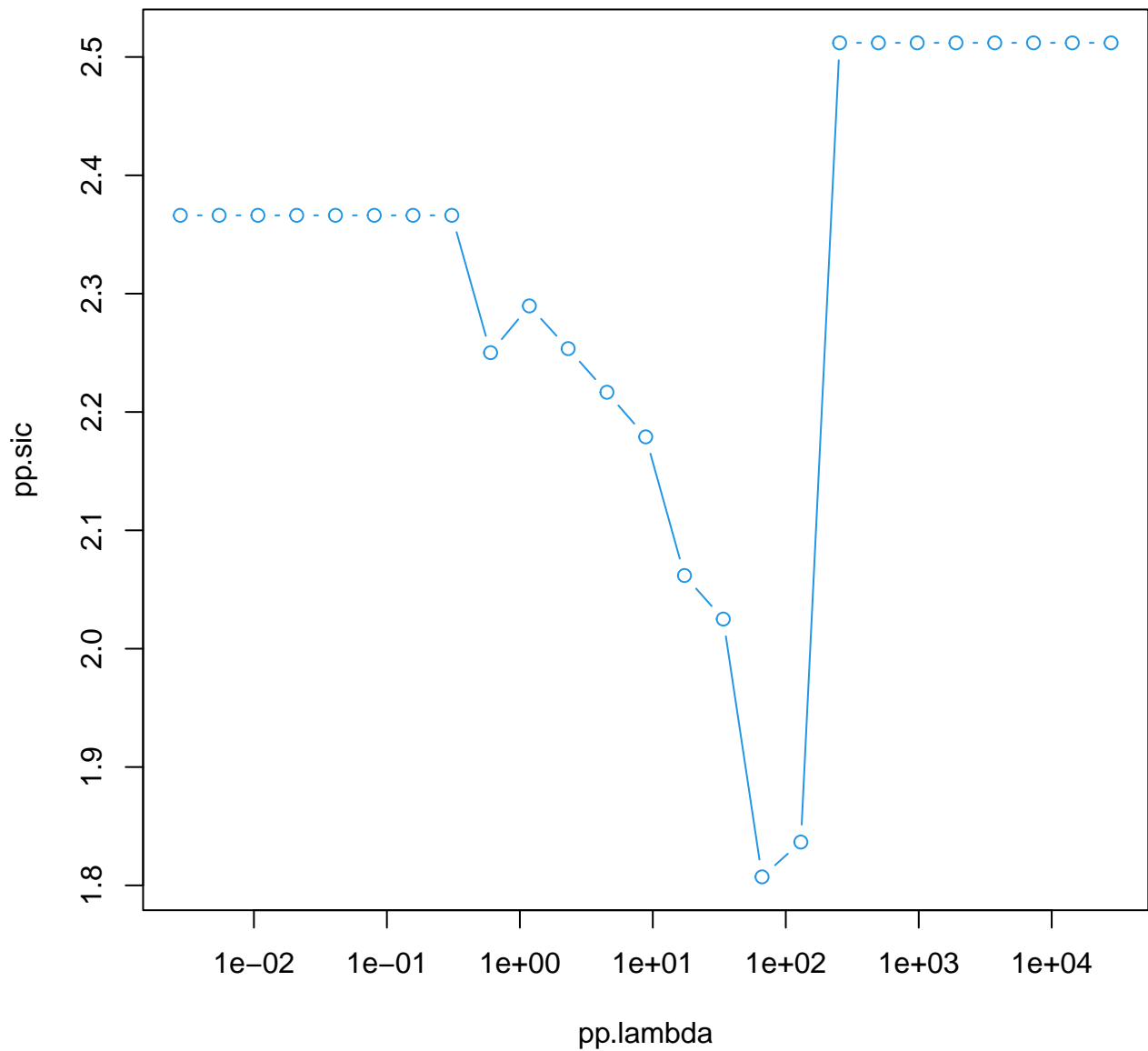
**cobs(x = x, y = y, constraint = "increase", lambda = -1, pointwise = con,  
trace = 3)**



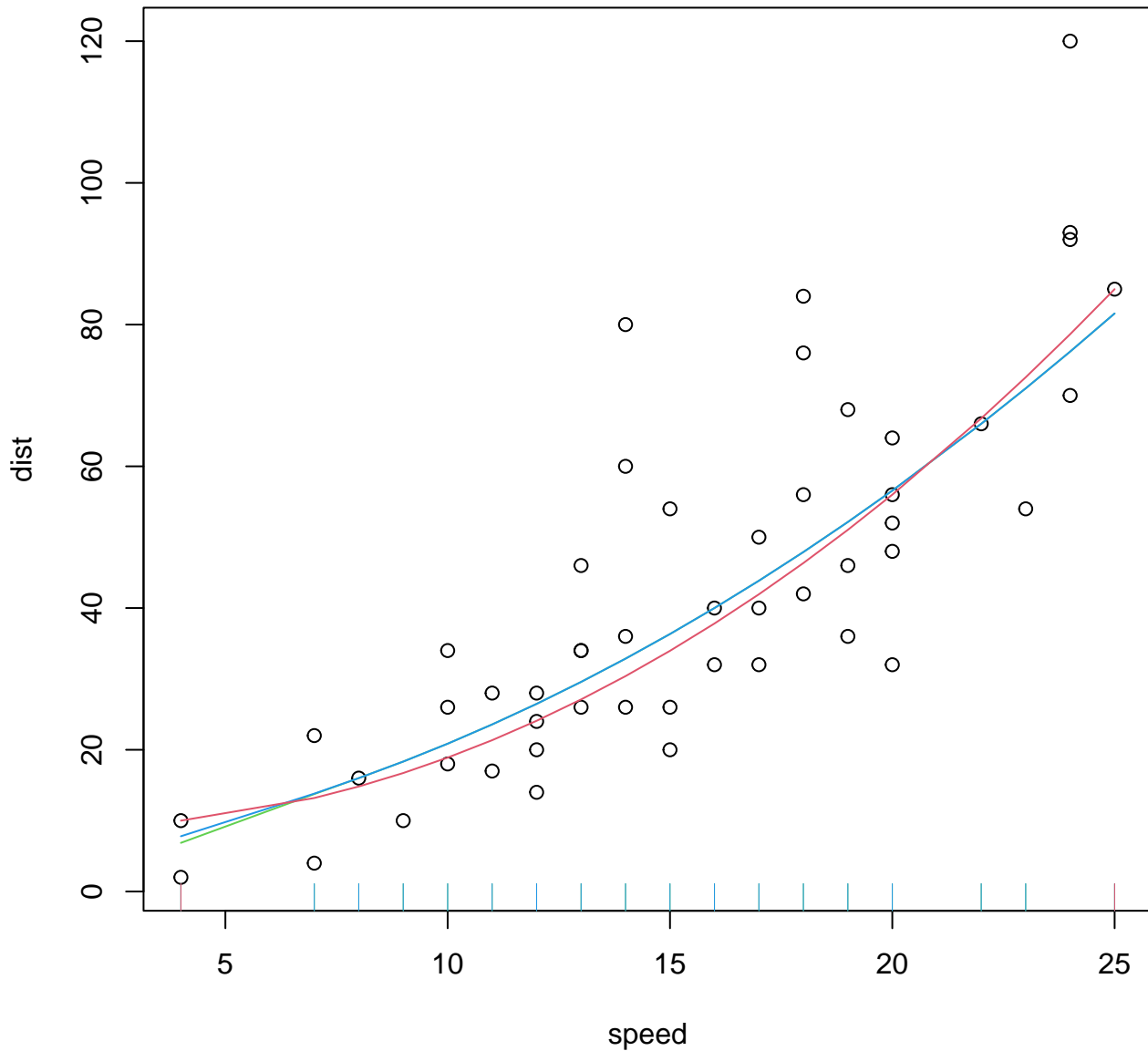
**cobs(x,y, constraint="increase", pointwise = \*)**



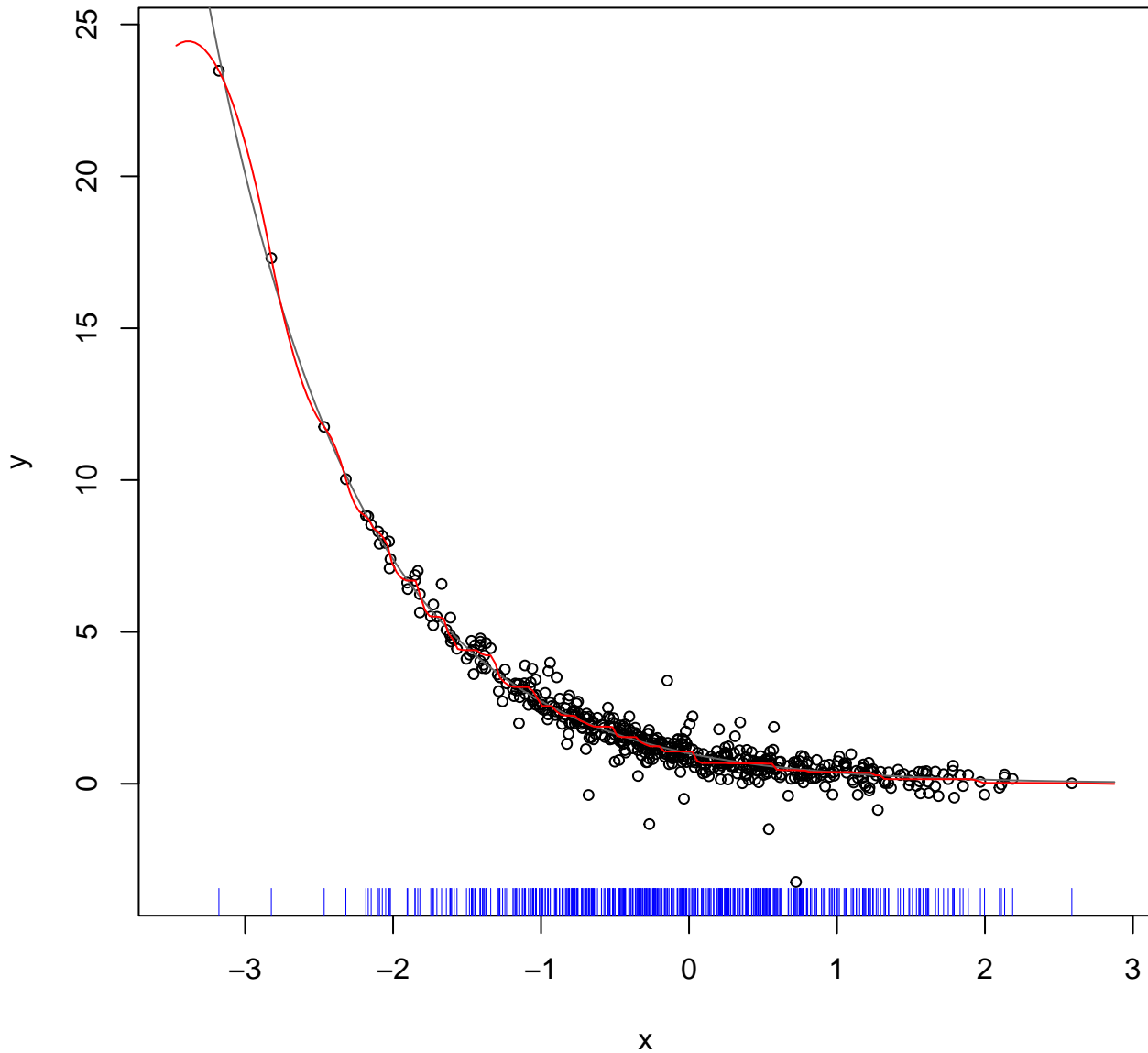




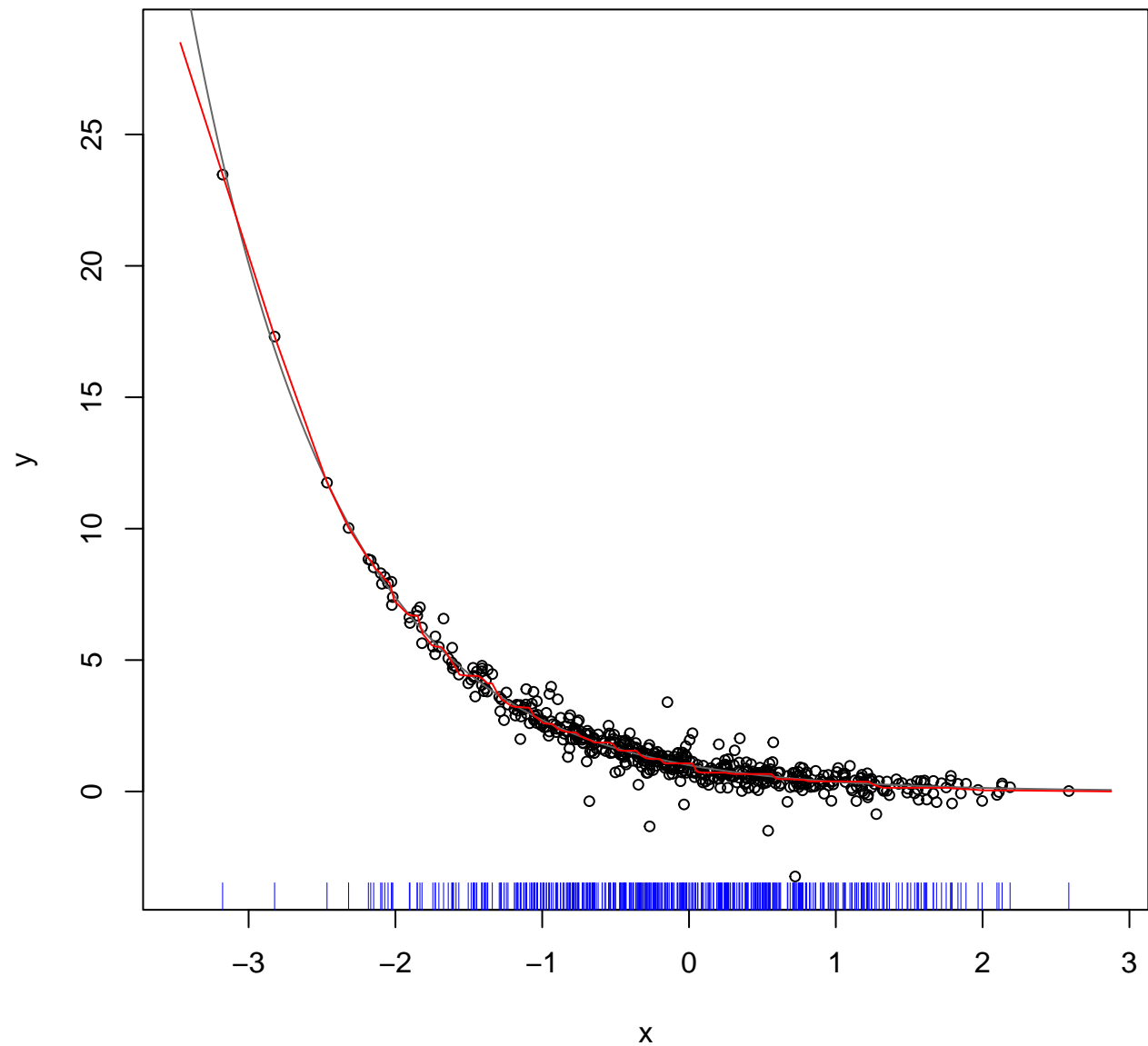
**cobs(speed,dist, ..) for data(cars)**



Artificial (x,y), N=500 : `interpolating' cobs()



N=500, `interpolate' cobs(x = x, y = y, constraint = "decrease", knots = ux, nkno  
Artificial, N=500, `interpolate' degree = 1)



Artificial (x,y), N=500 : cobs(\*, lambda = -1)

$R^2 = 95.7\%$

