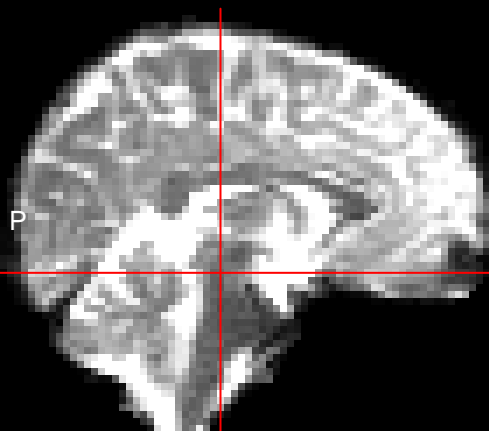


Location: [50,39,23]

`system.file("extdata", "example.nii.gz", package = "RNifti")`

300

S



A

L

S



R

I

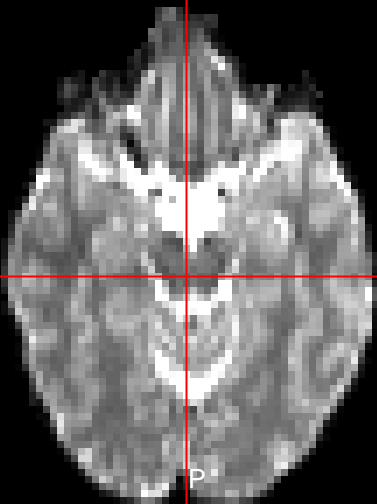
I

A

Location: [50,39,23]

image
300

L



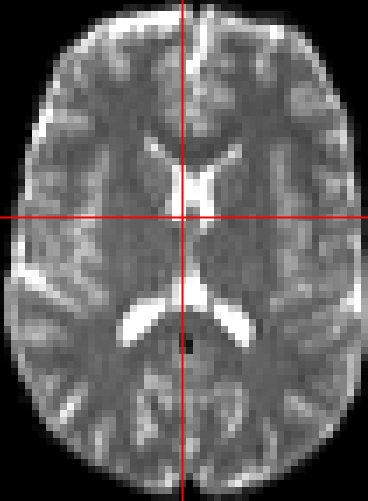
R

I

Location: [48,48,1]

image[, , 34]

790



S

S

P

A

L

R

I

I

A

Location: [50,39,23]

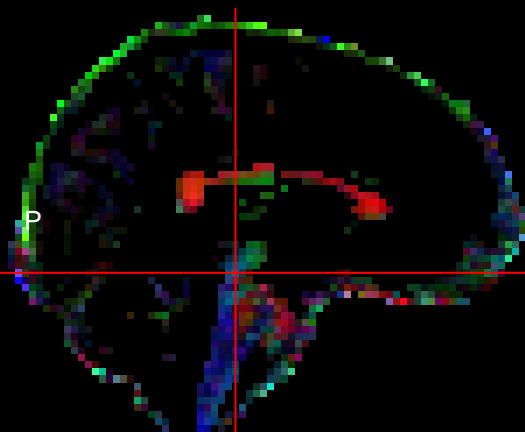
rgbImage
#1F5B8A

L

R

P

S



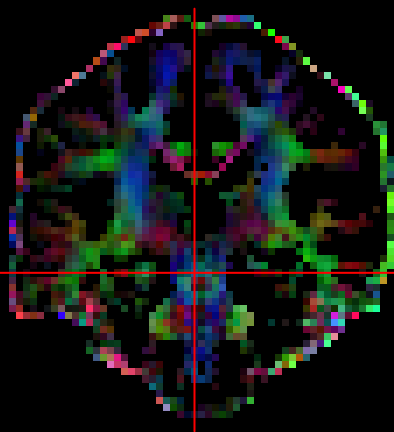
P

A

L

I

S



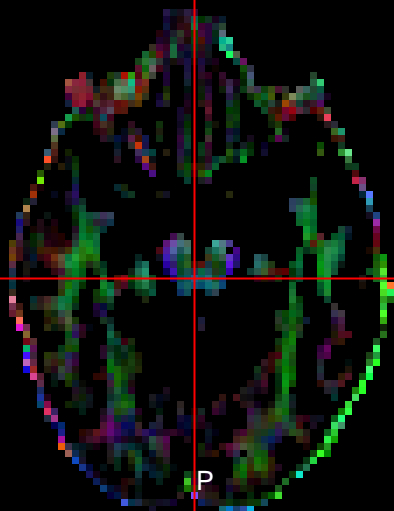
R

I

Location: [50,39,23]

rgbImage
#1F5B8A

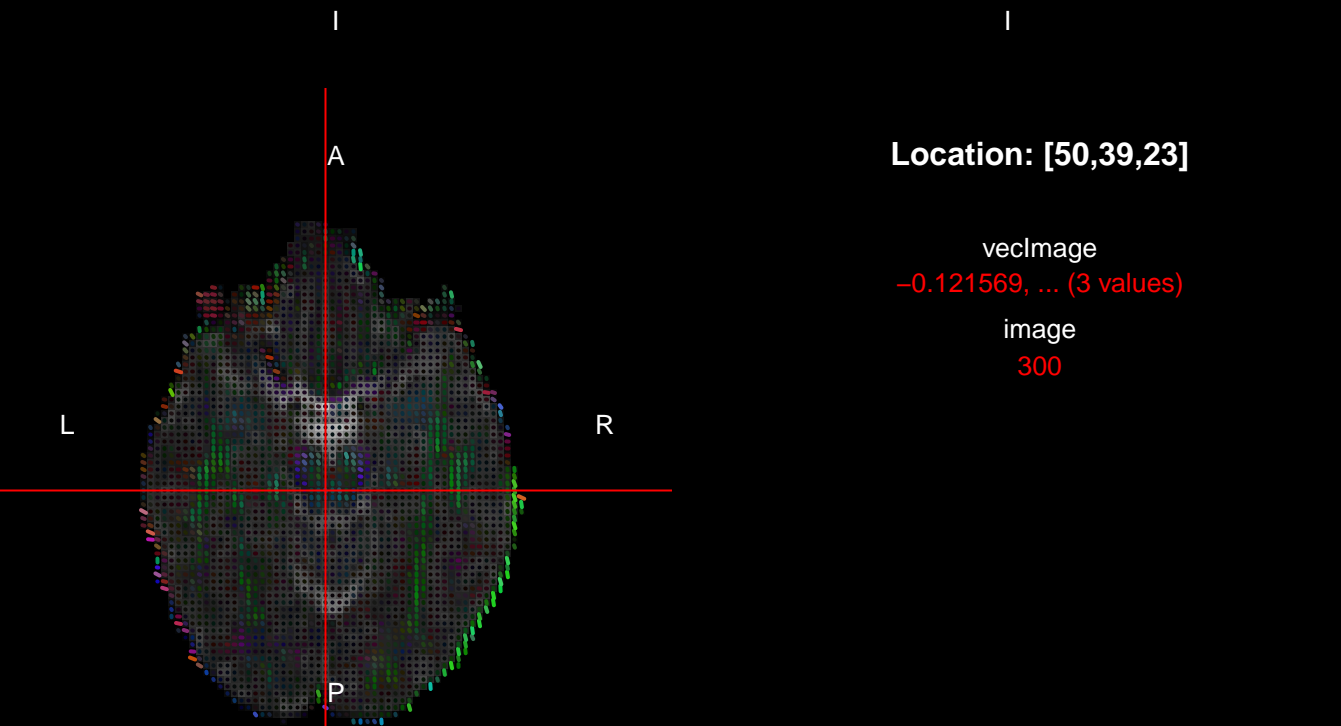
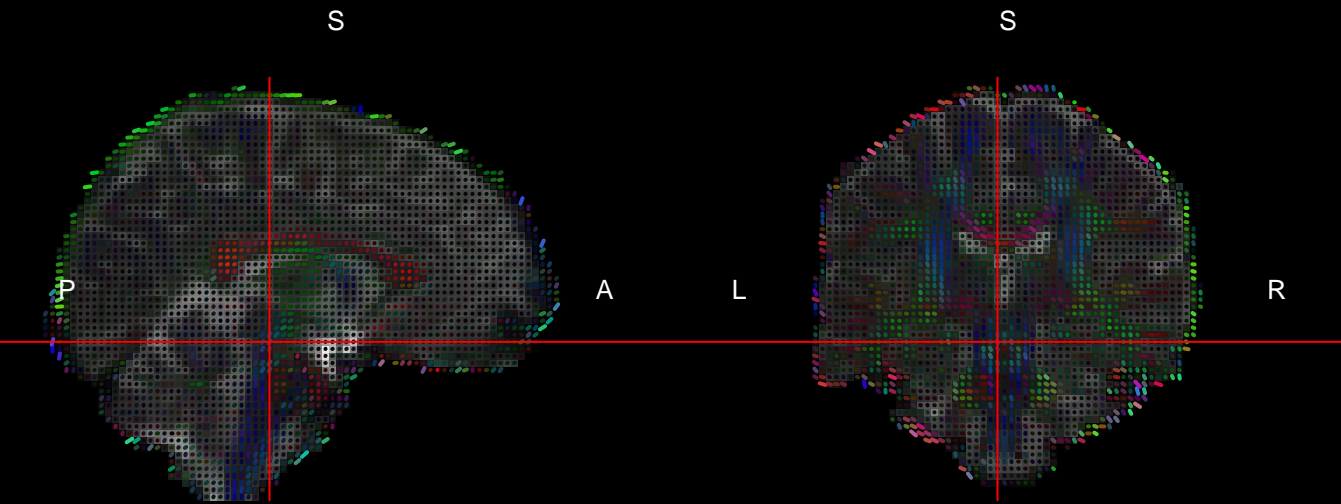
A



L

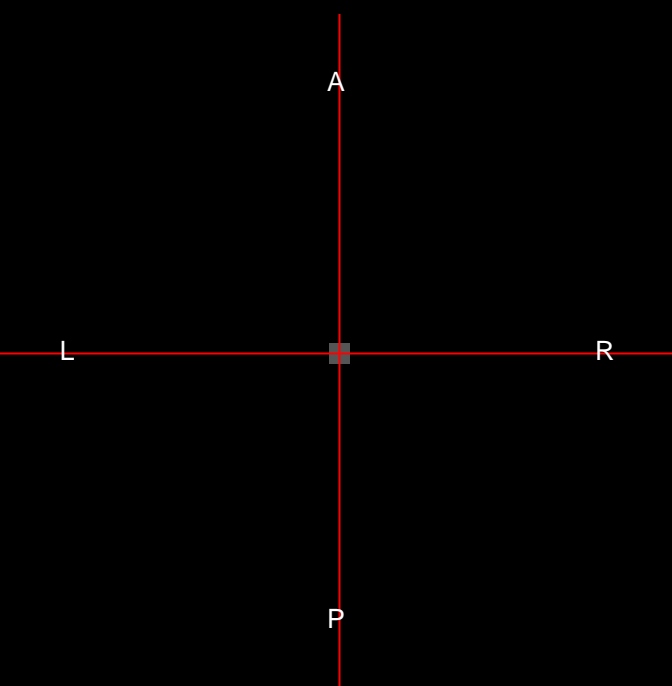
R

P



Location: [50,39,23]

veclmage
-0.121569, ... (3 values)
image
300



Location: [48,48,20]

