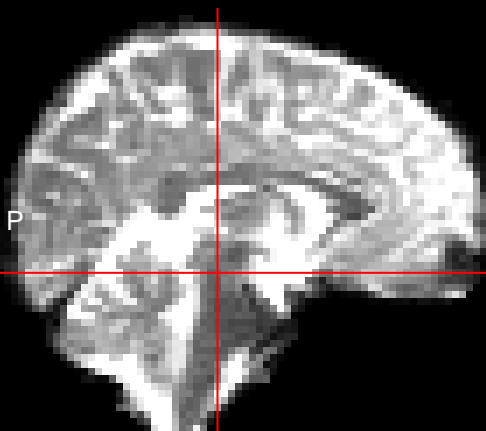


**Location: [50,39,23]**

`system.file("extdata", "example.nii.gz", package = "RNifti")`

300

S



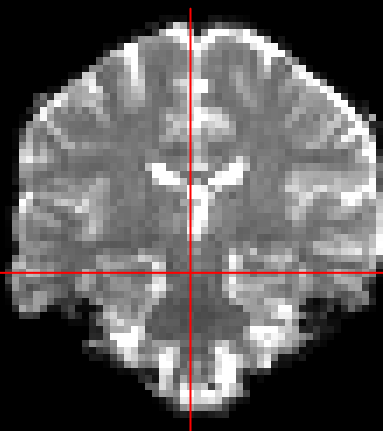
P

A

L

I

S



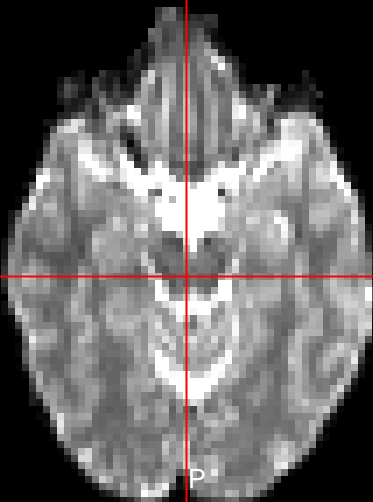
R

I

Location: [50,39,23]

image  
300

A



L

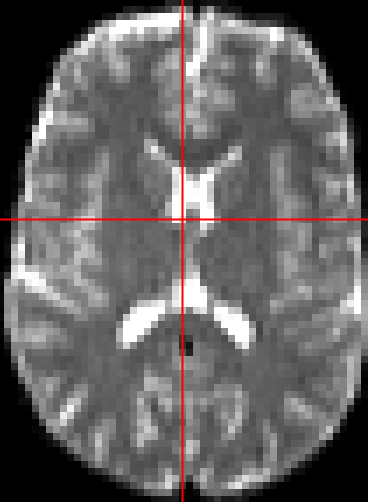
R

P

Location: [48,48,1]

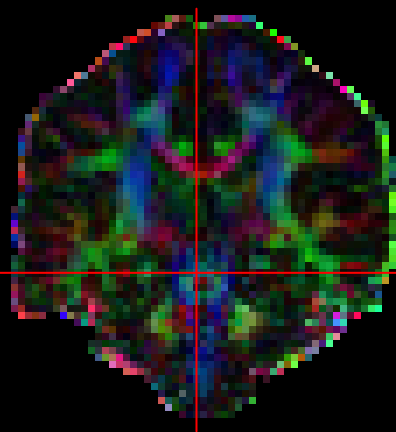
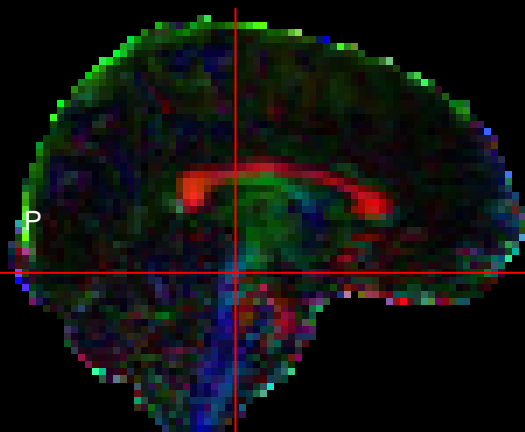
image[, , 34]

790



S

S



P

A

L

R

I

I

Location: [50,39,23]

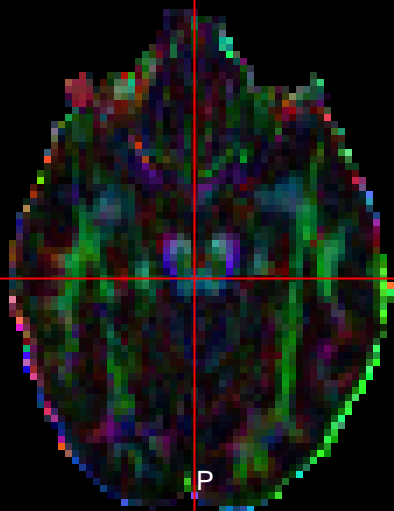
rgbImage  
#1F5B8A

A

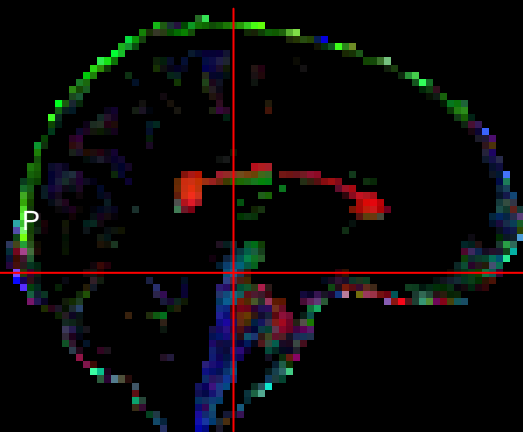
L

R

P



S

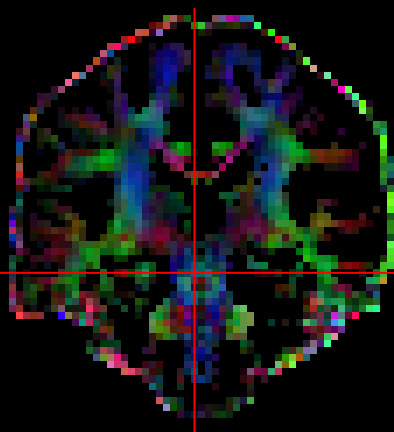


P

A

L

S



R

I

I

A

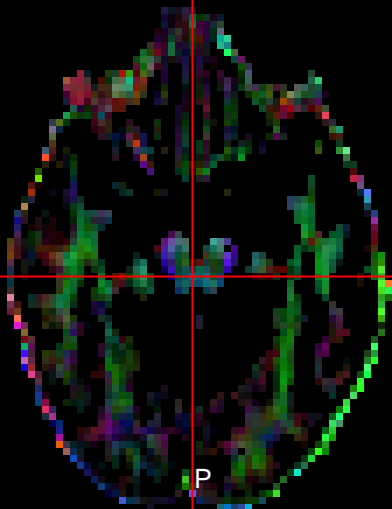
Location: [50,39,23]

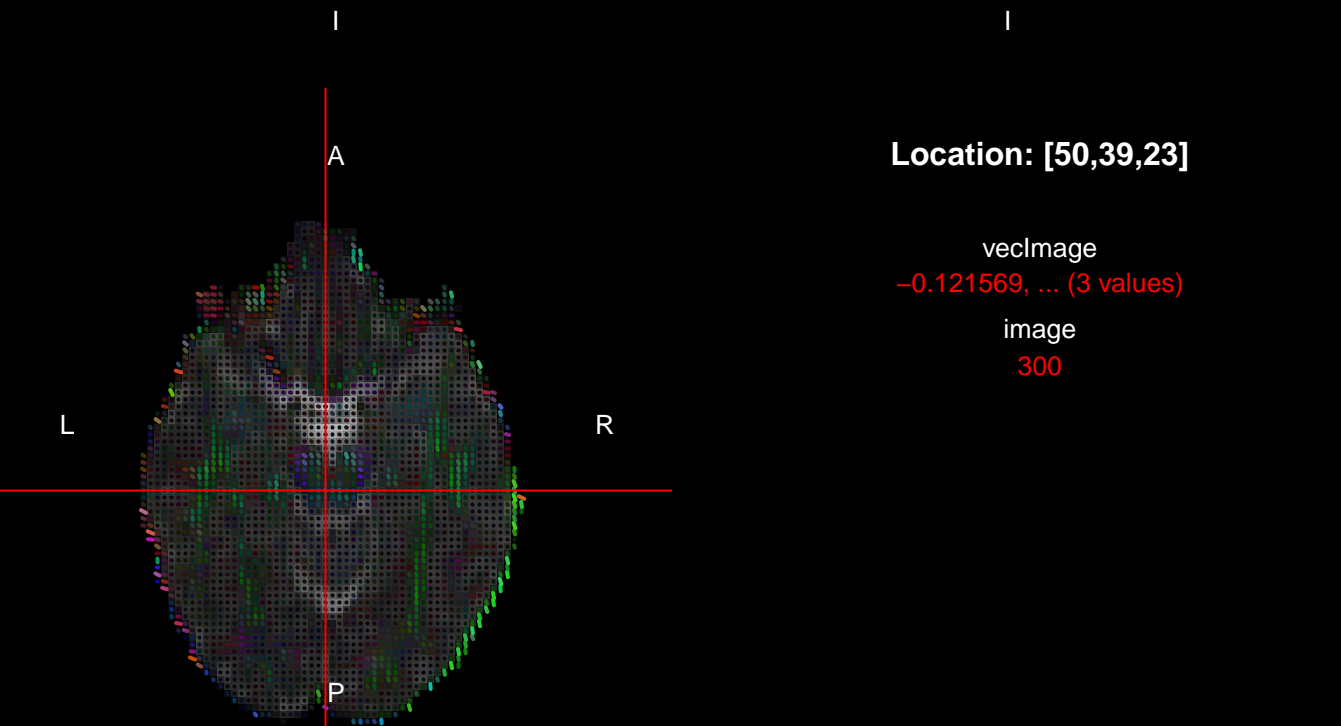
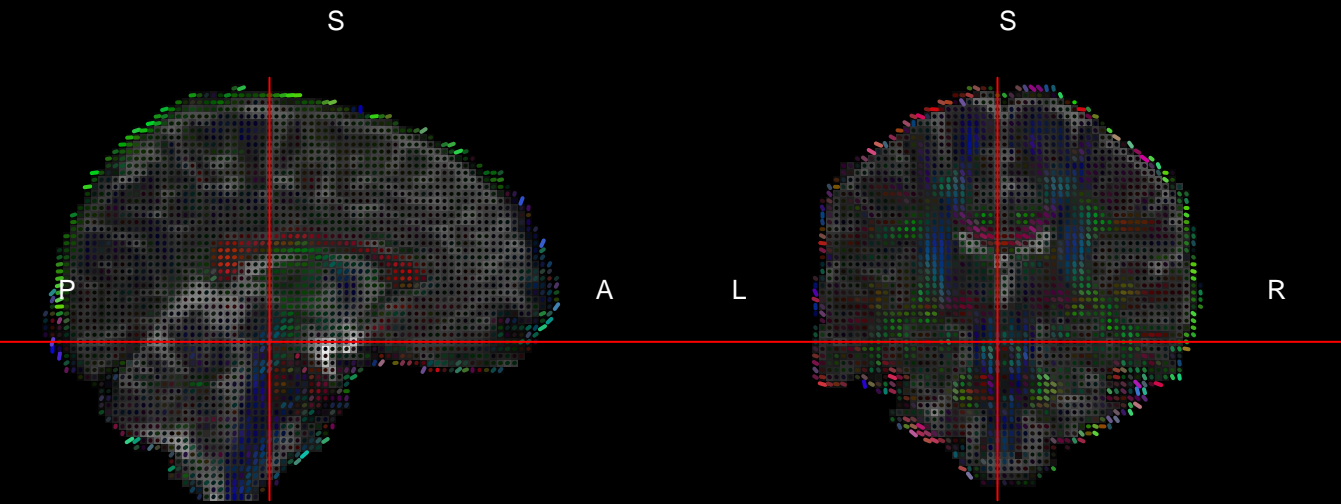
rgbImage  
#1F5B8A

L

R

P

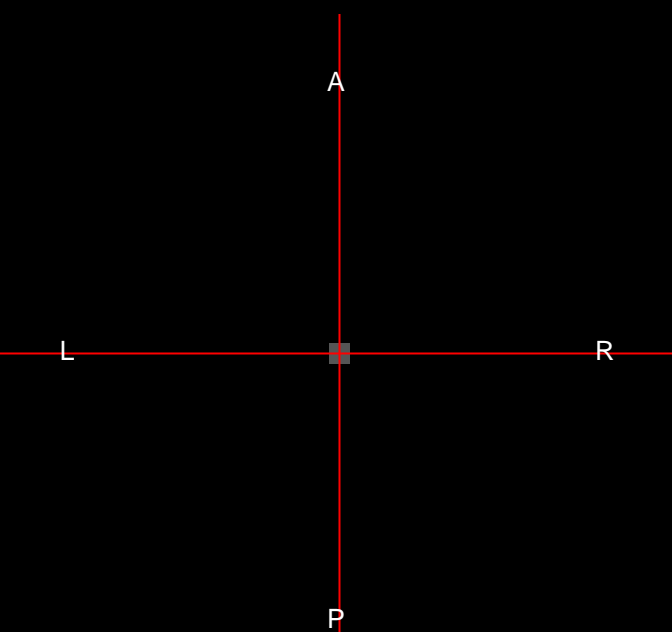




**Location: [50,39,23]**

veclmage  
-0.121569, ... (3 values)

image  
300



Location: [48,48,20]

