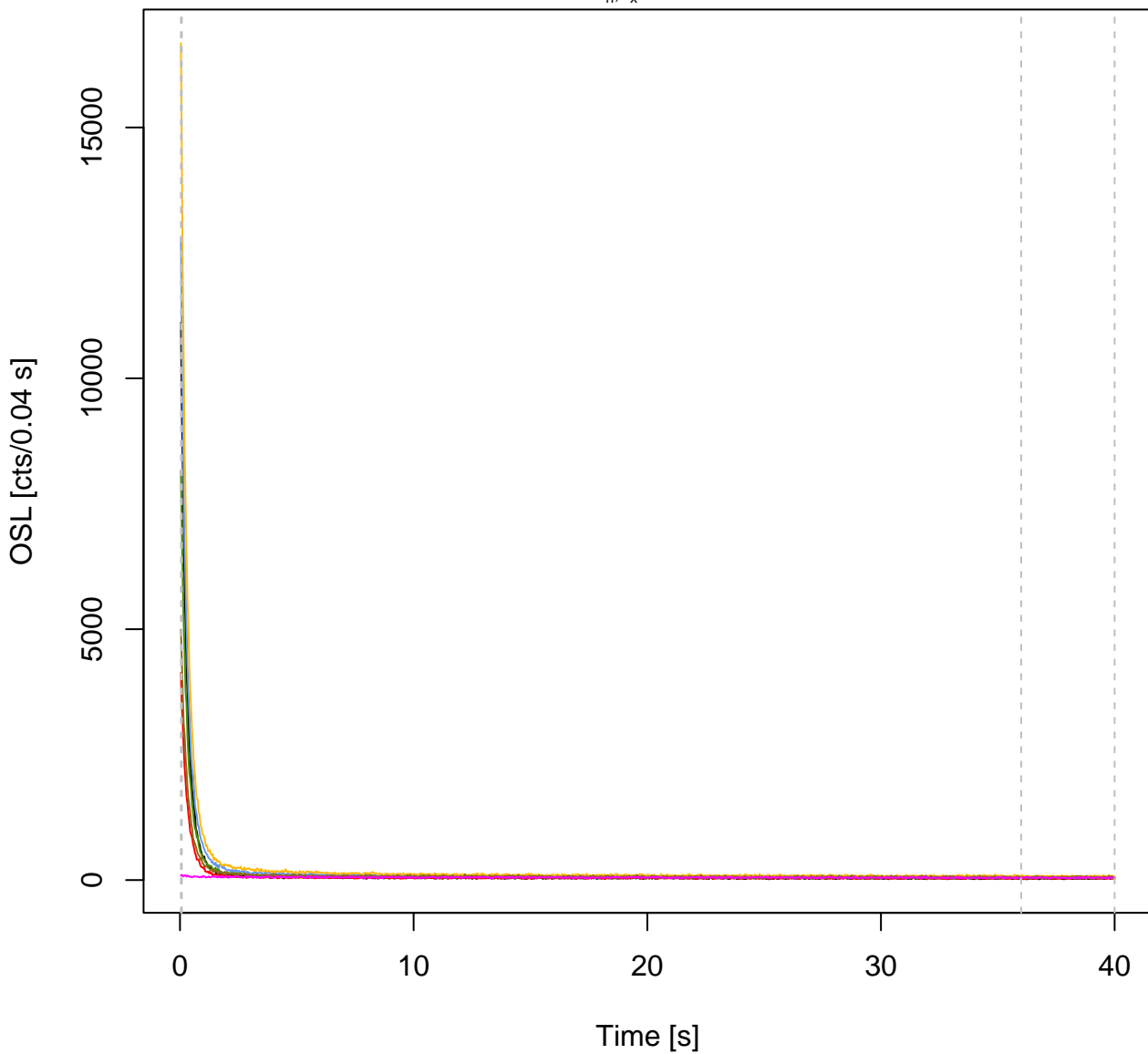


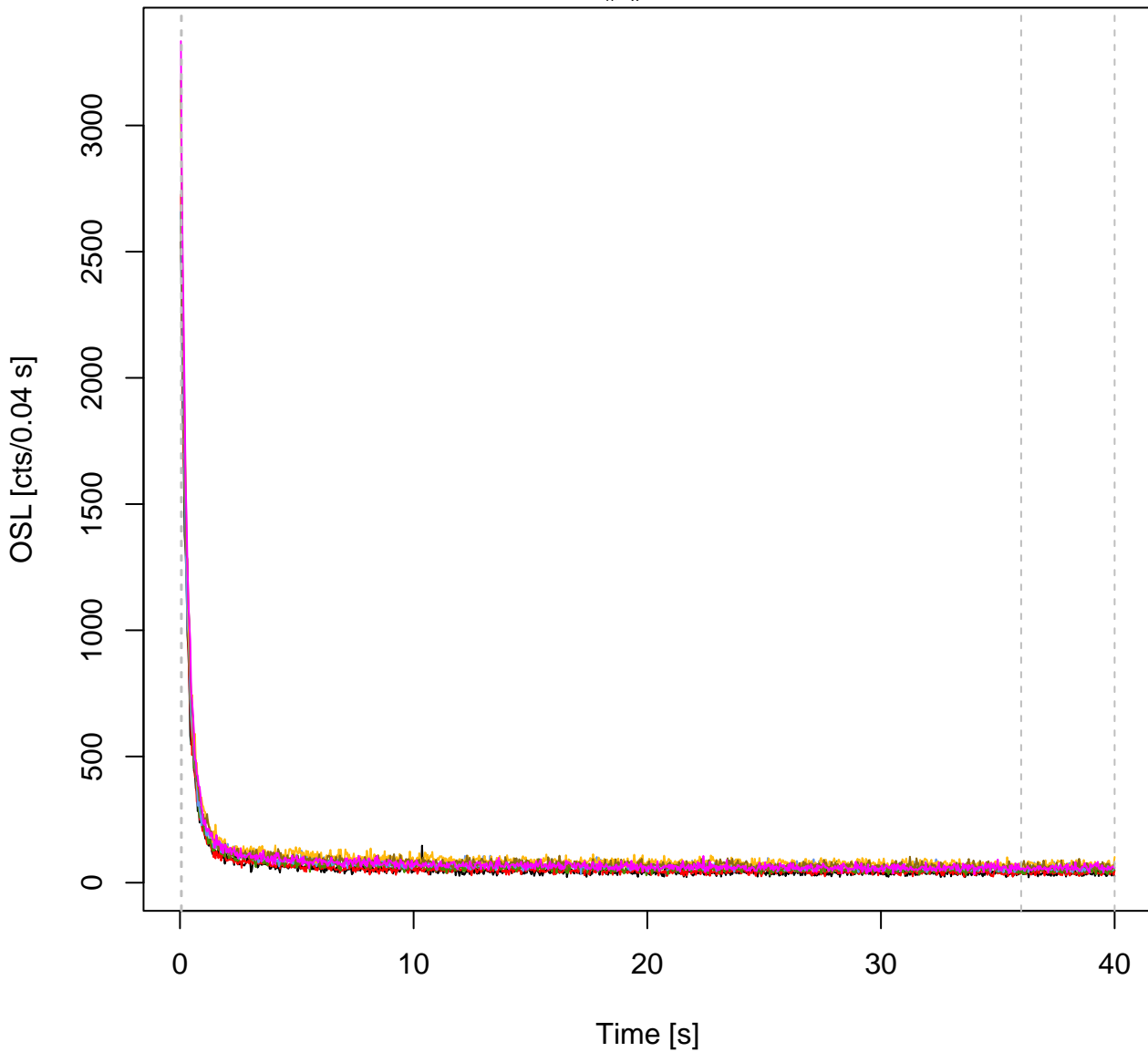
ALQ #1

L_n, L_x curves



ALQ #1

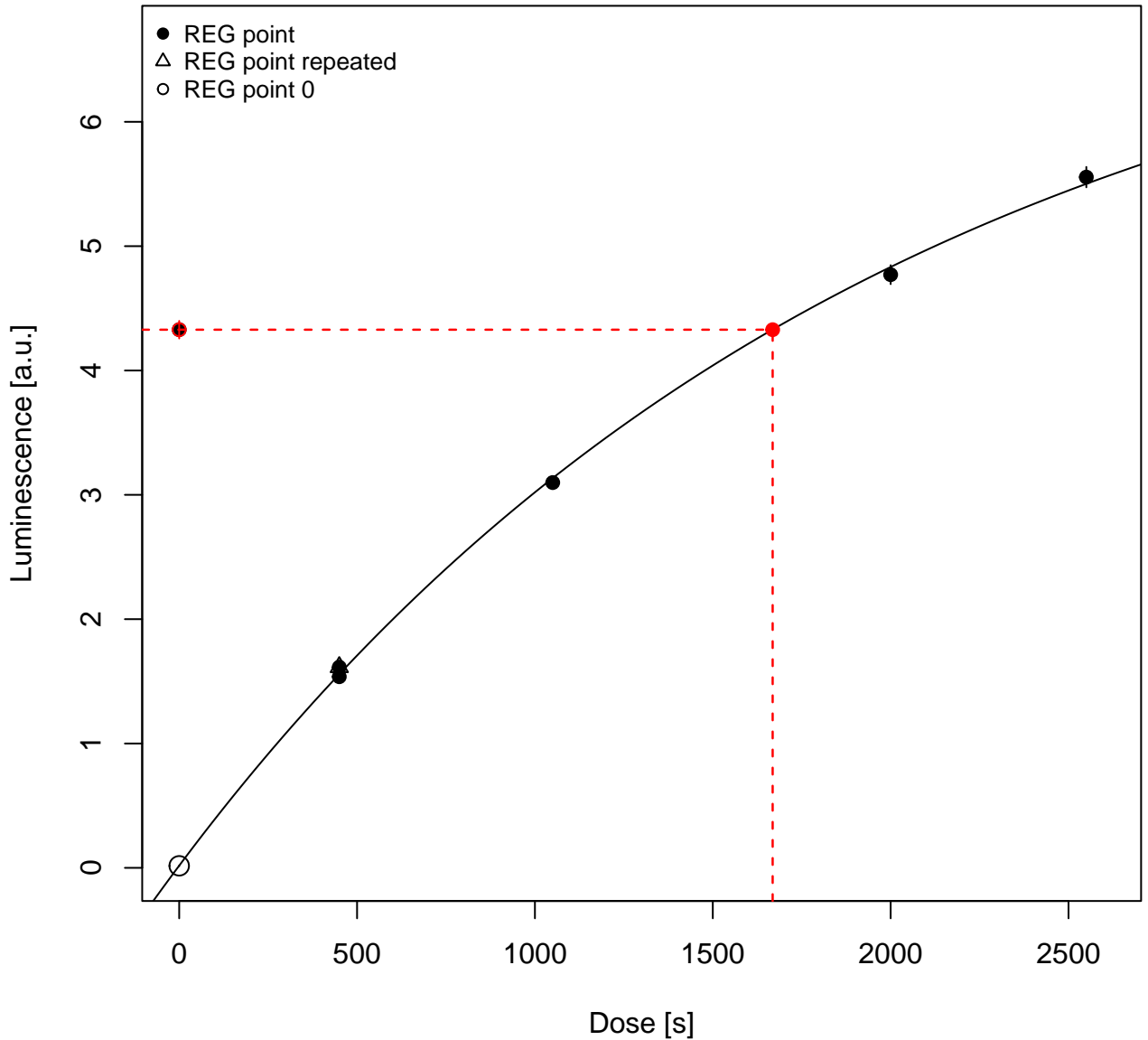
T_n, T_x curves





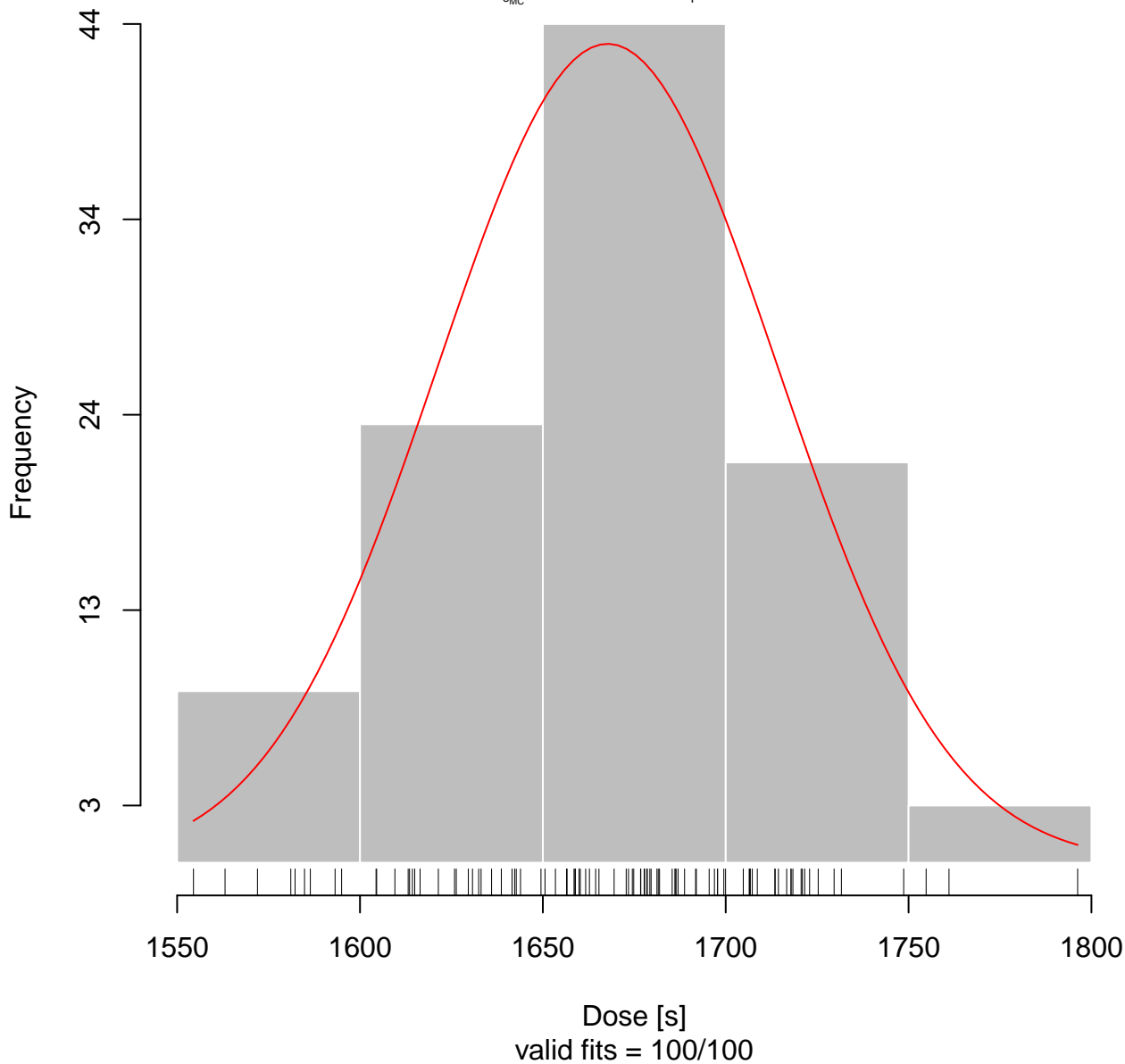
ALQ #1

$D_e = 1668.25 \pm 4.6e+01$ | fit: EXP

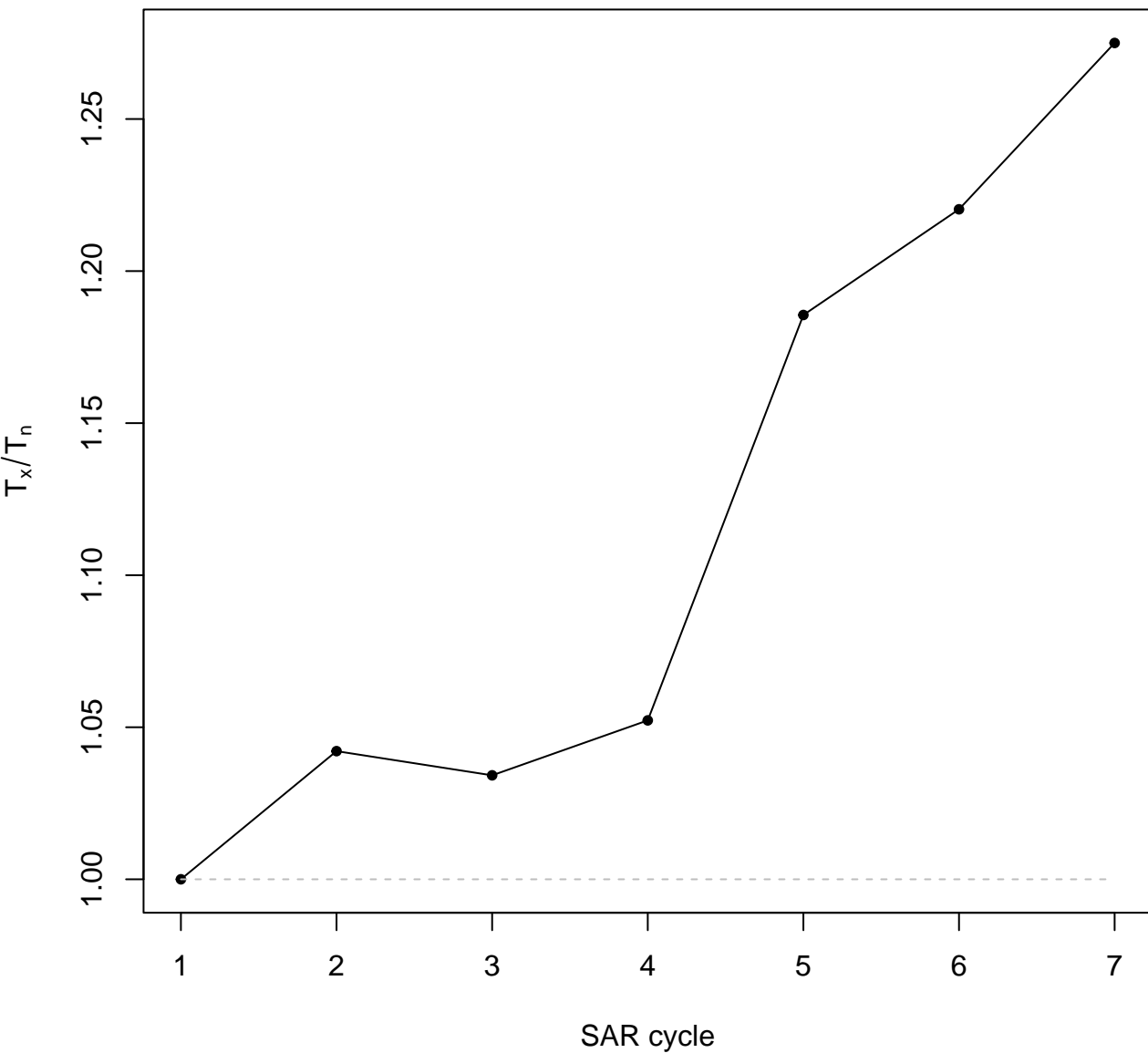


MC runs

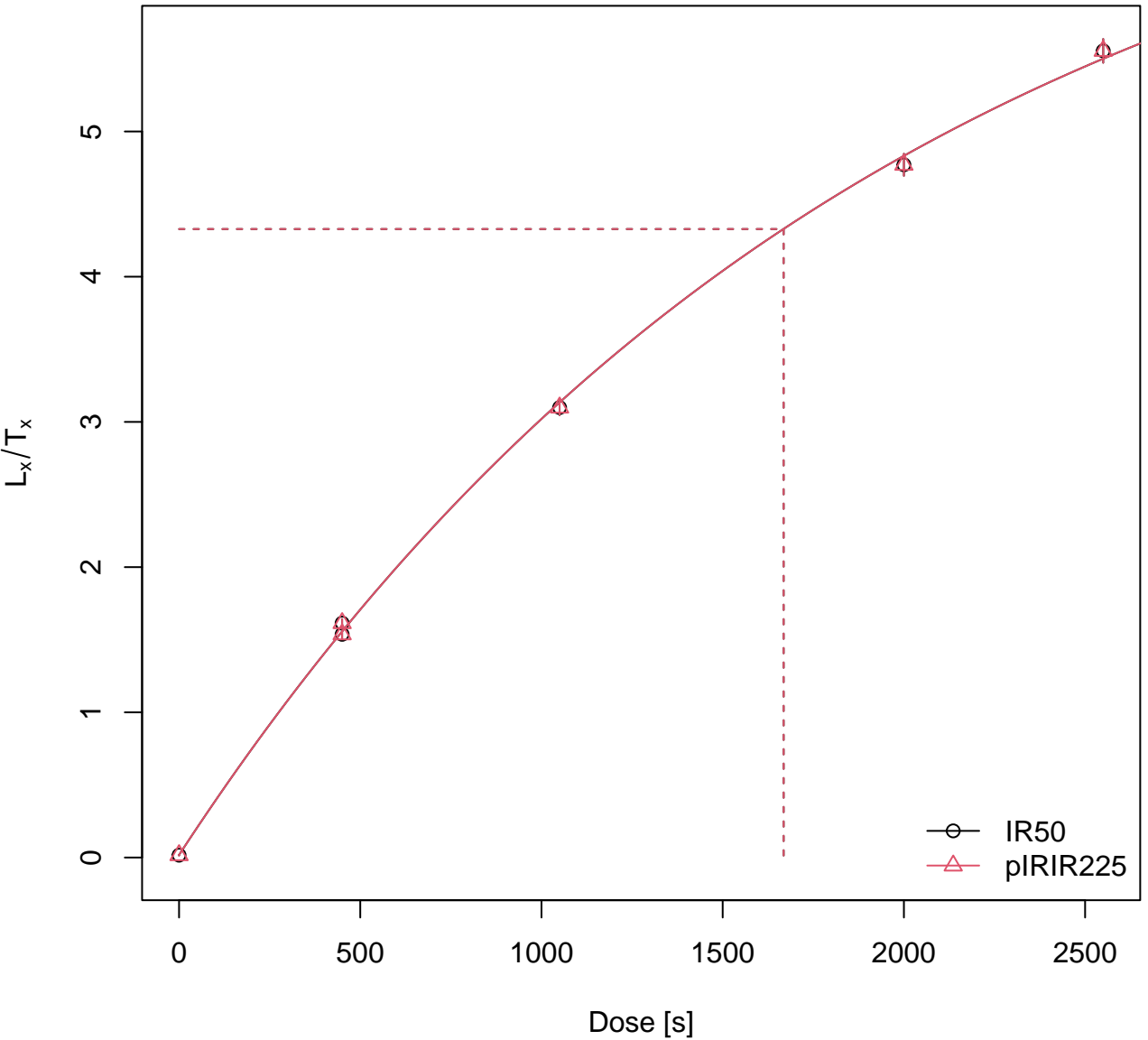
$D_{\text{EMC}} = 1667.72 \pm 4.6e+01$ | diff. = 0 %



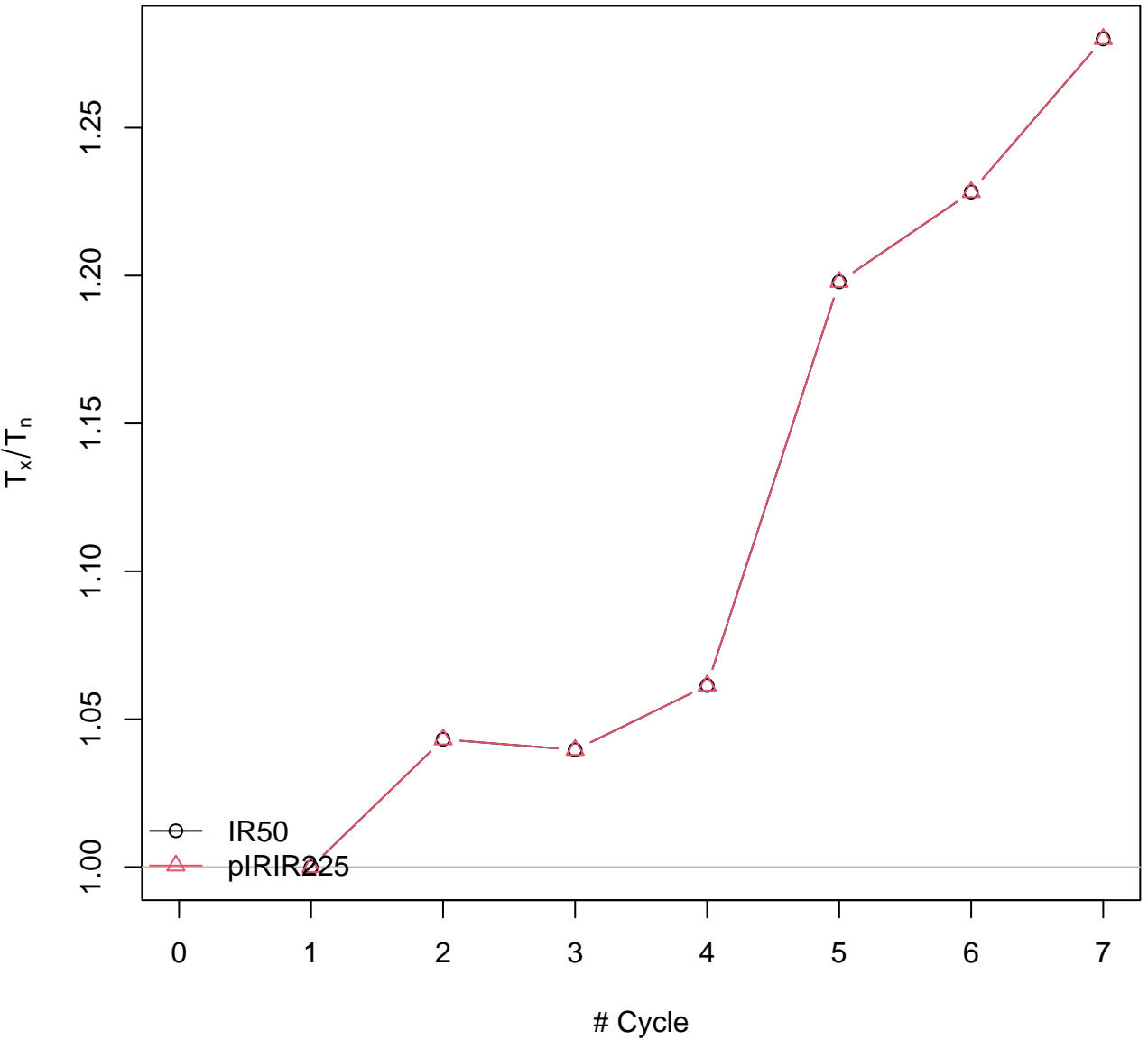
Test-dose response



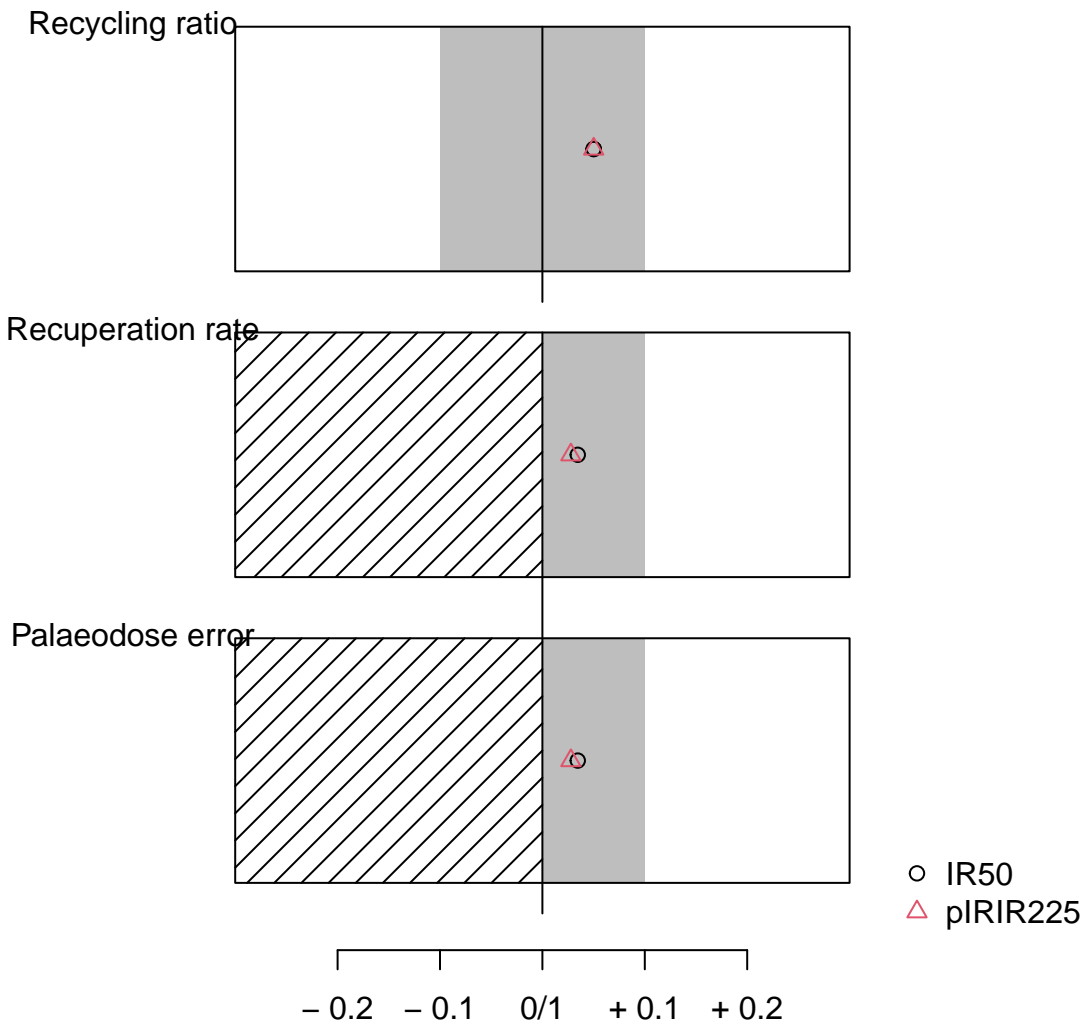
Summarised Dose Response Curves



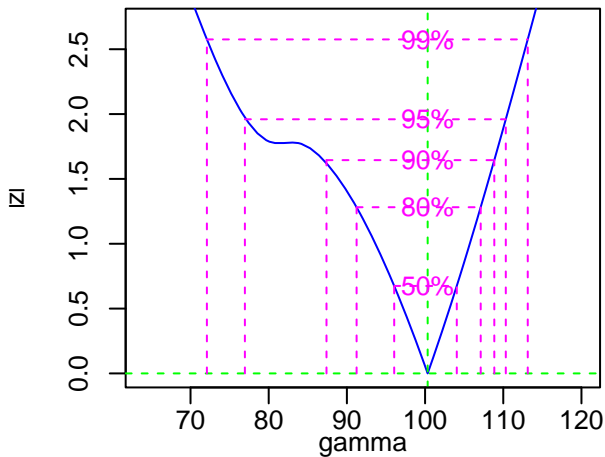
Sensitivity change



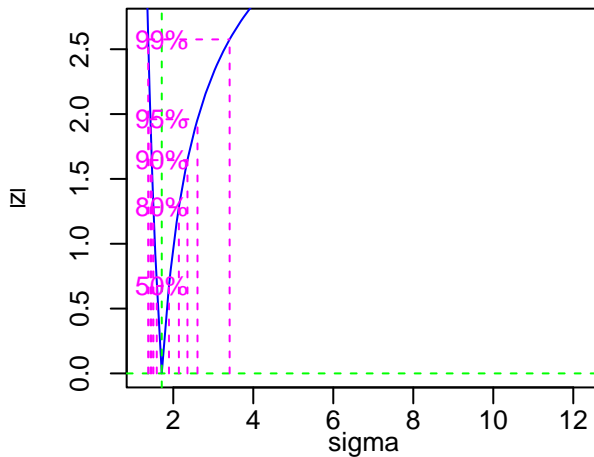
Rejection criteria



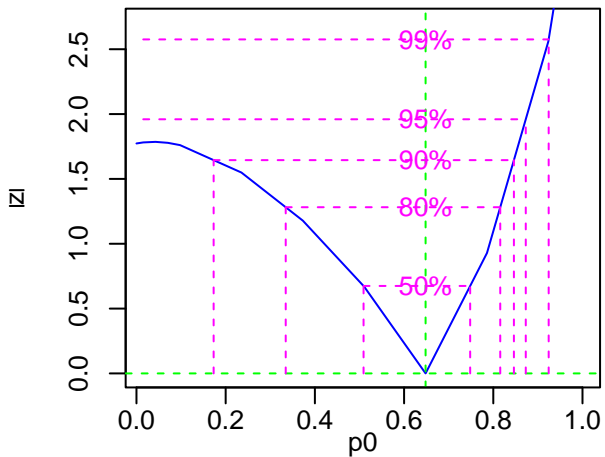
Likelihood profile: gamma

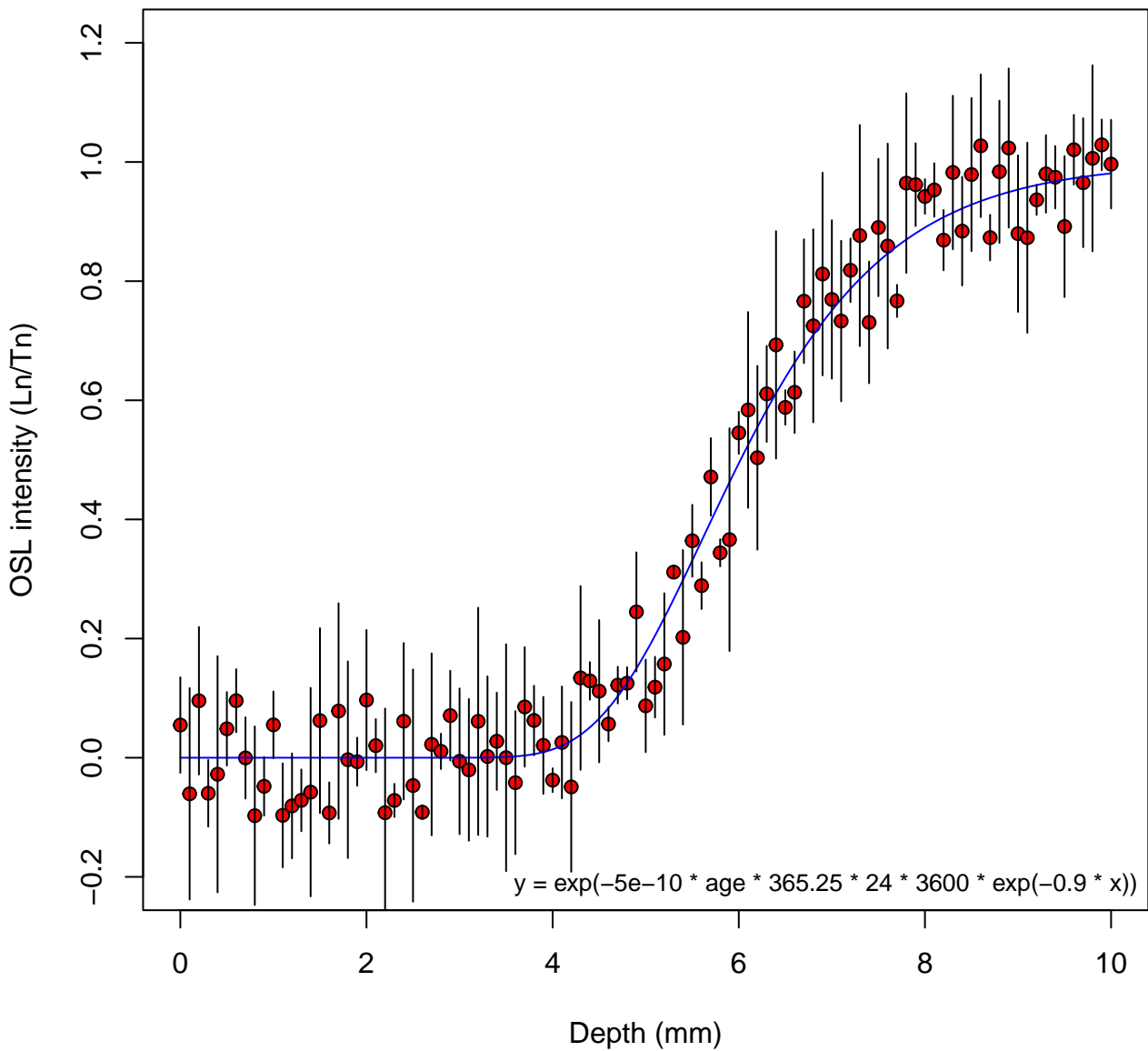


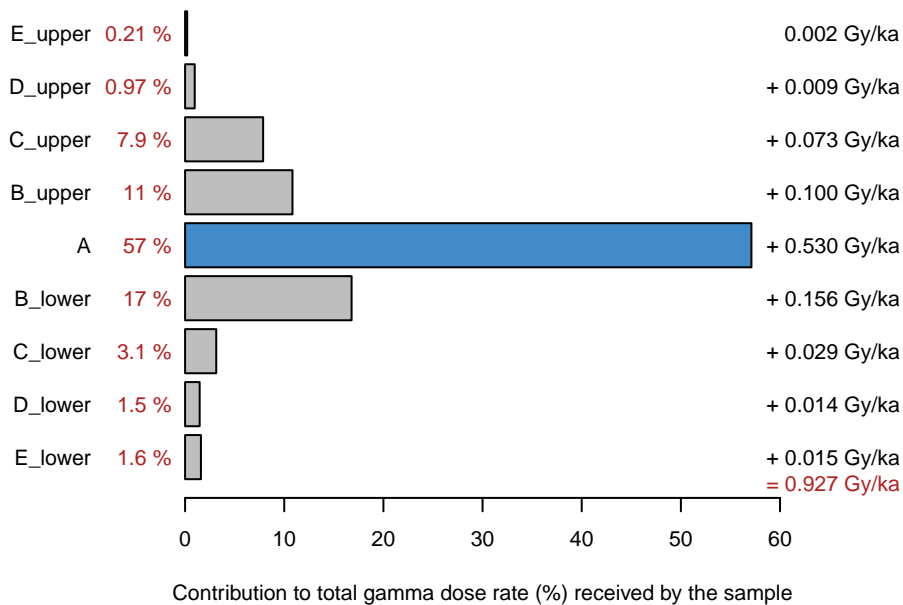
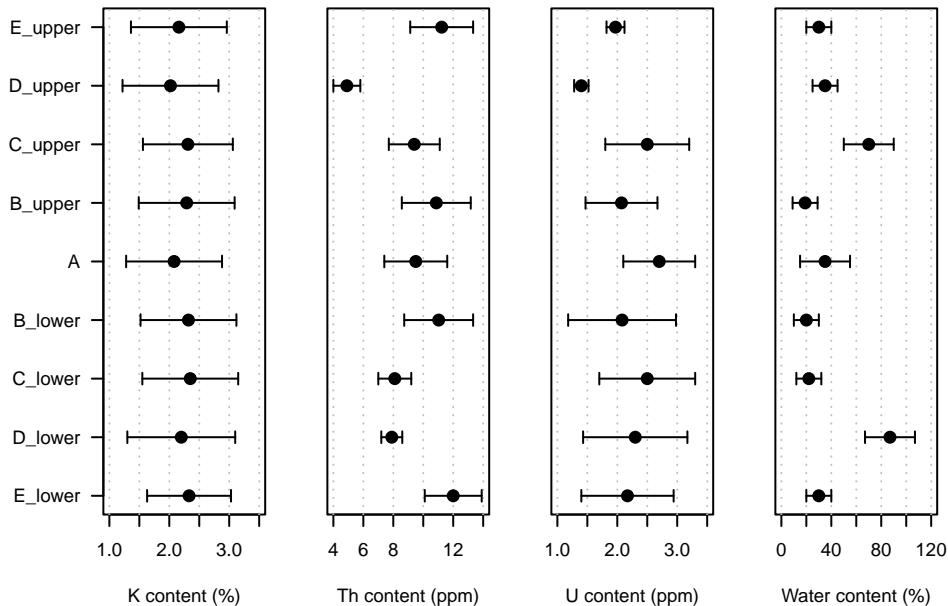
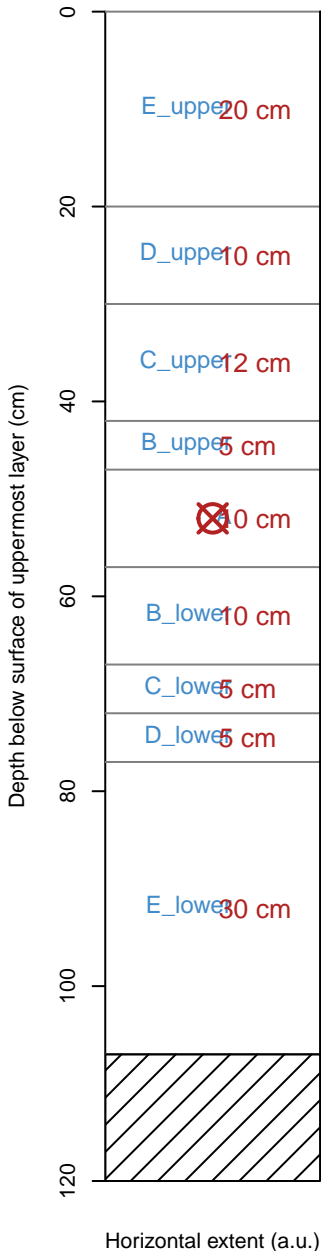
Likelihood profile: sigma



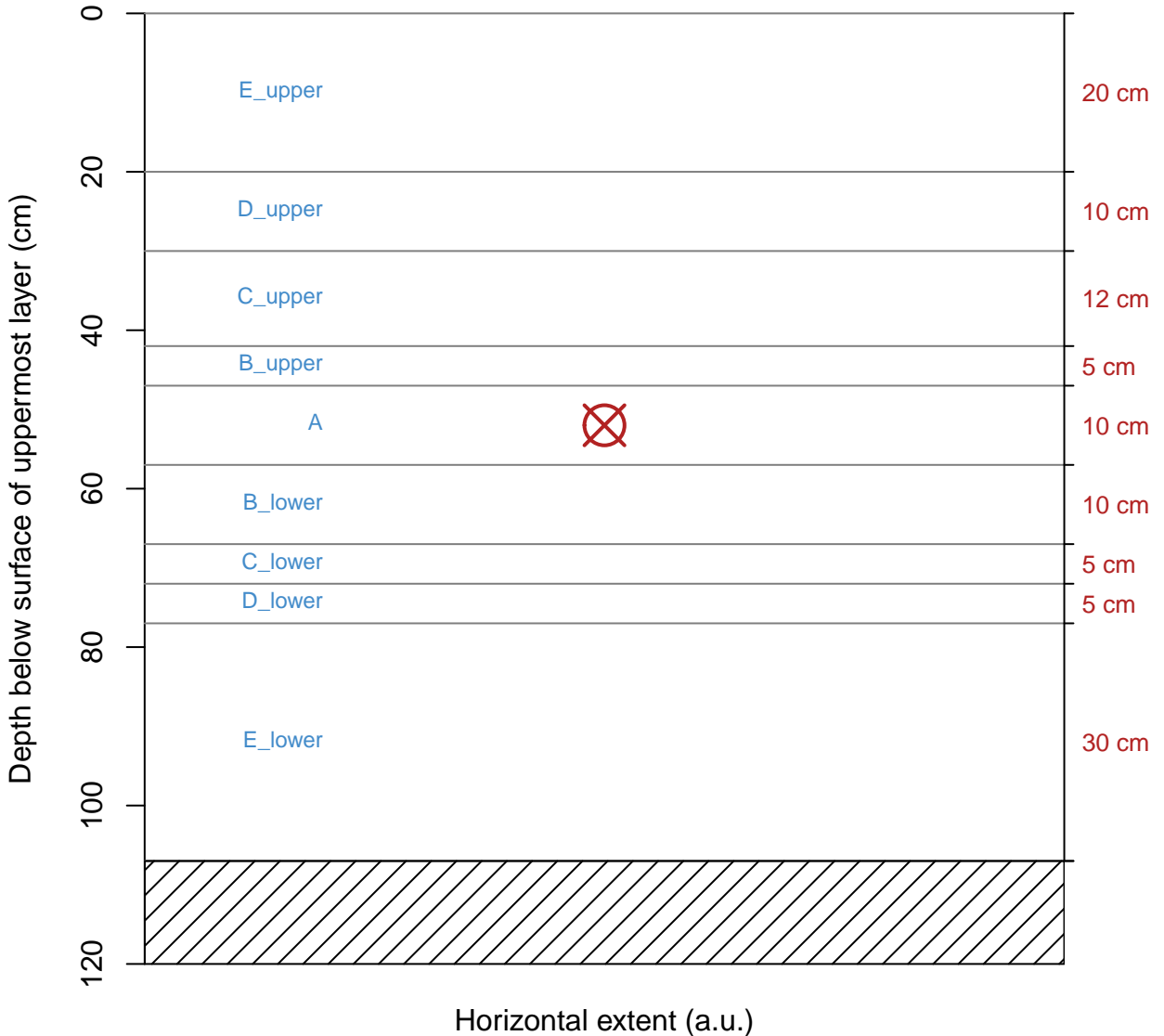
Likelihood profile: p0

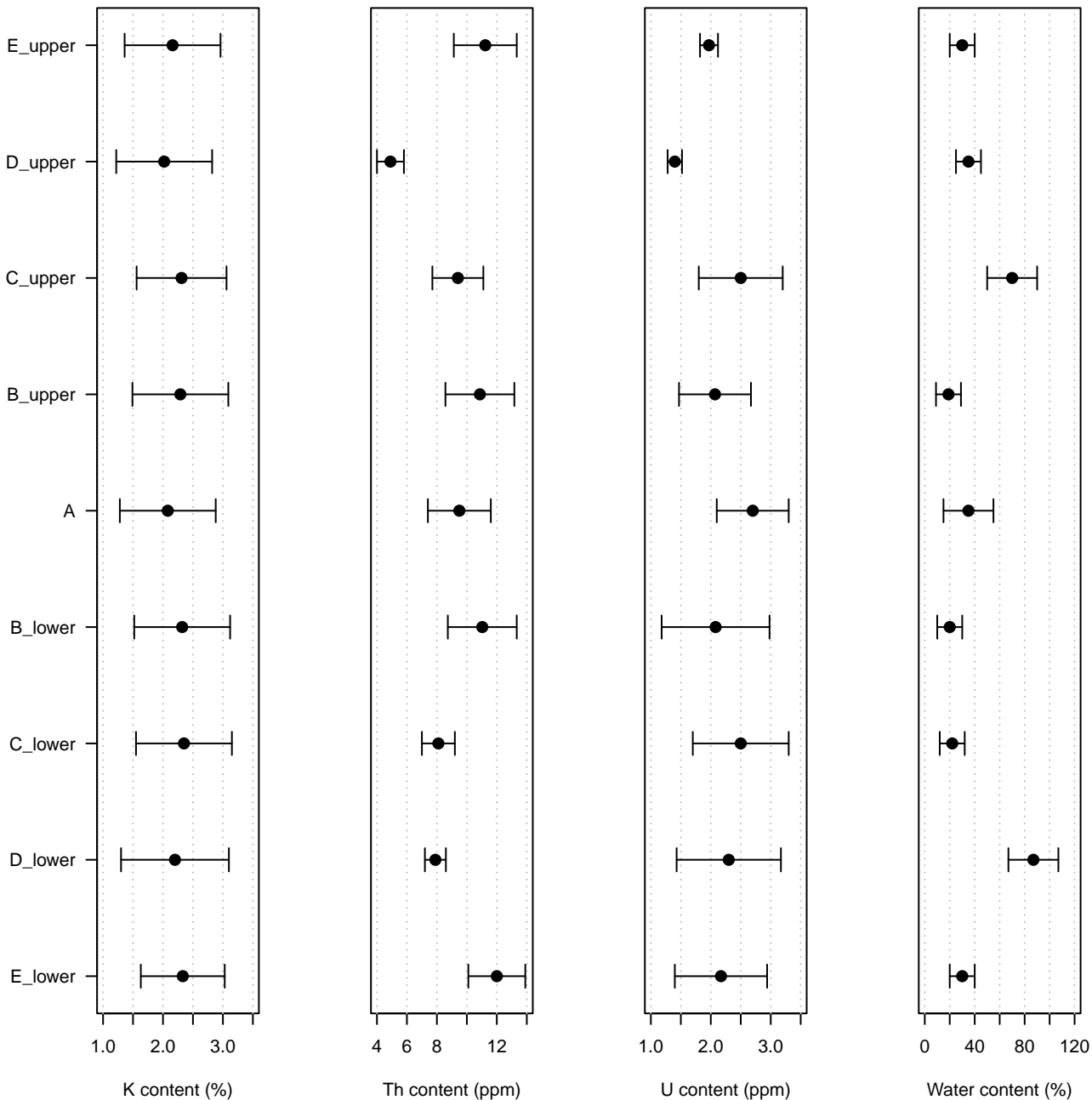




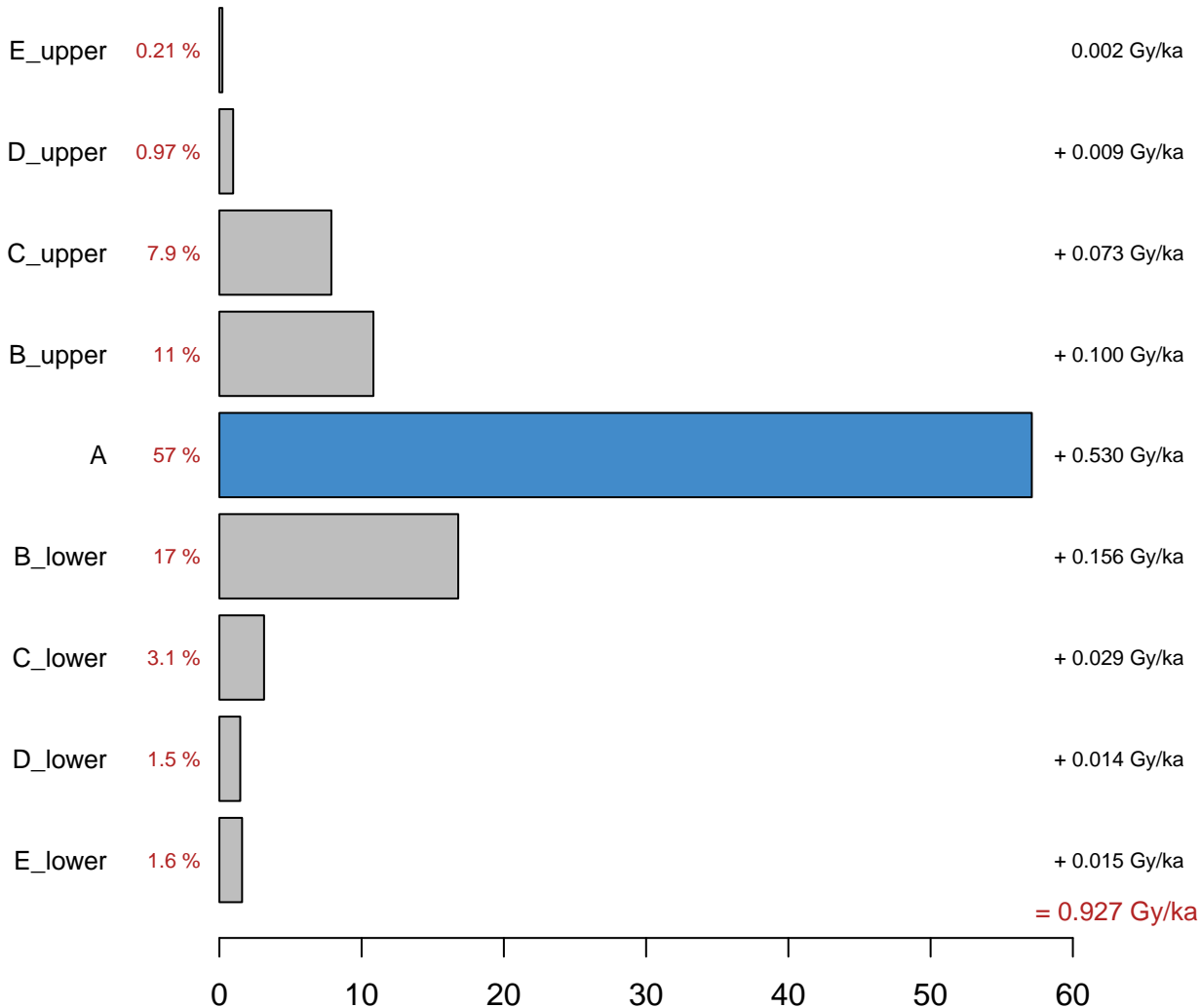


Profile structure





Contributions of each layer to the total gamma dose rate received by the sample



Contribution to total gamma dose rate (%) received by the sample