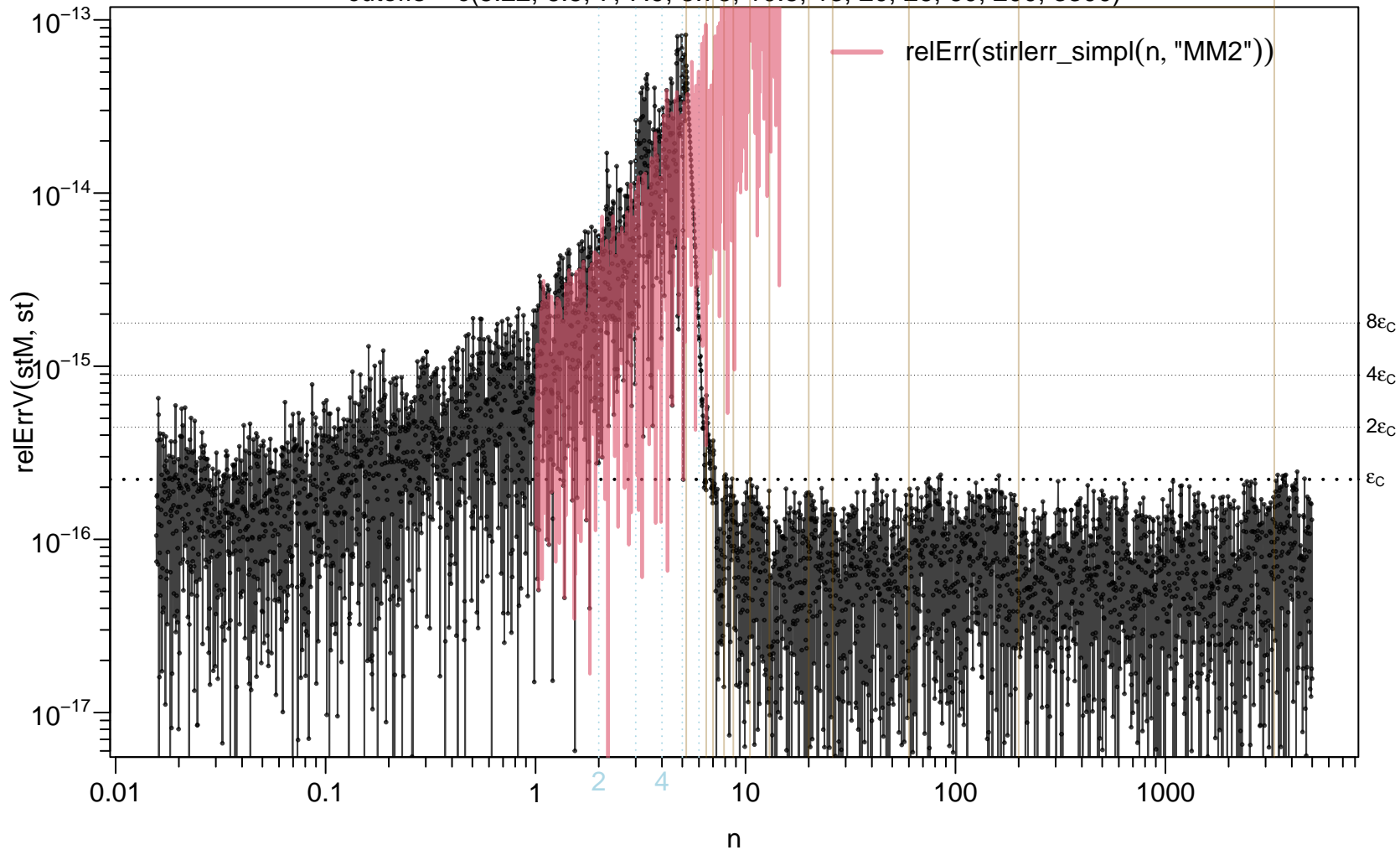
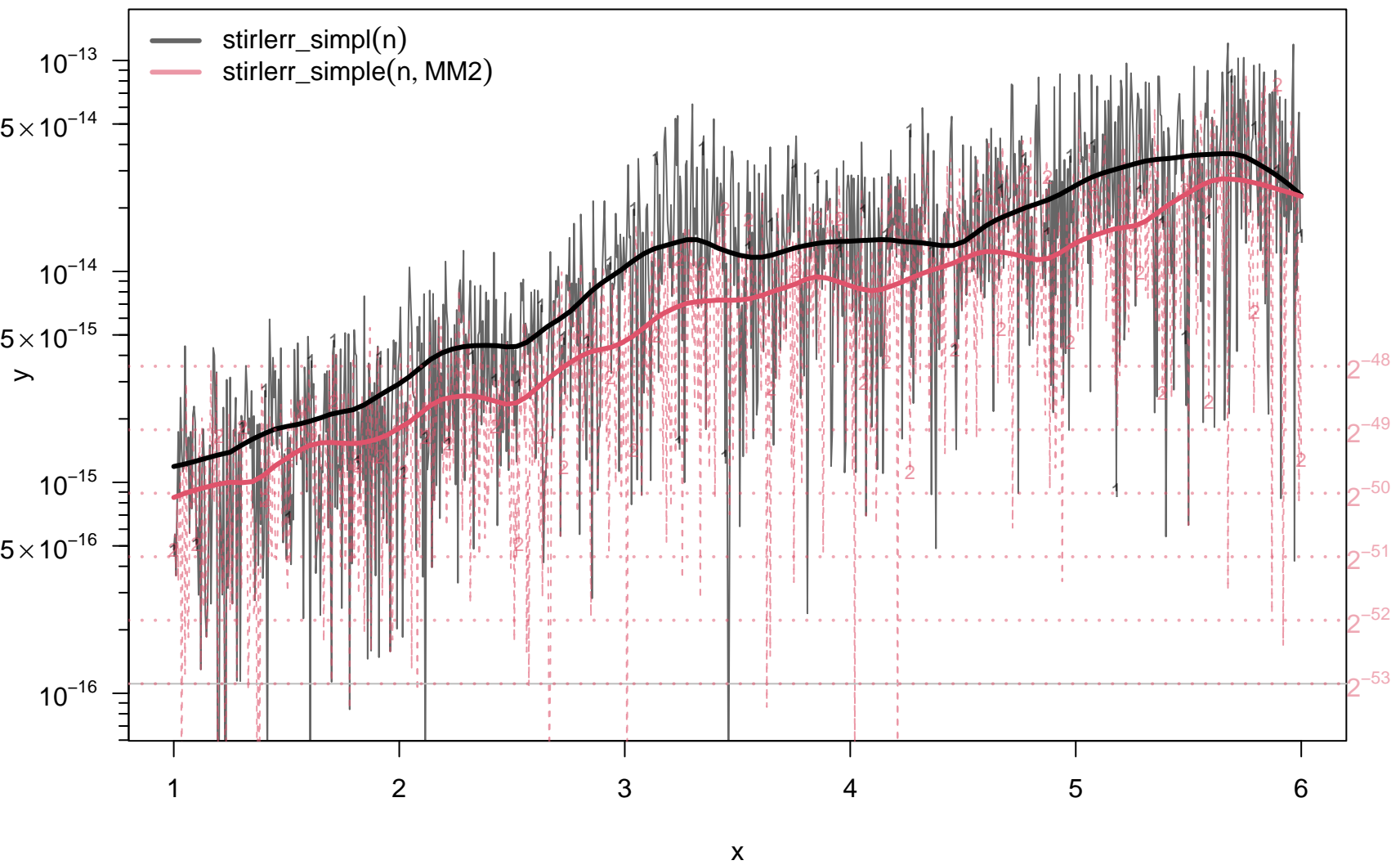


# stirlerr(n, cutoffs) rel.error [wrt stirlerr(Rmpfr::mpfr(n, 512))]

cutoffs = c(5.22, 6.5, 7, 7.9, 8.75, 10.5, 13, 20, 26, 60, 200, 3300)





$1 - 12 * x * \text{stirlerr}(x, \text{cutoffs} = \text{cuts}, \text{verbose} = \text{TRUE})$

