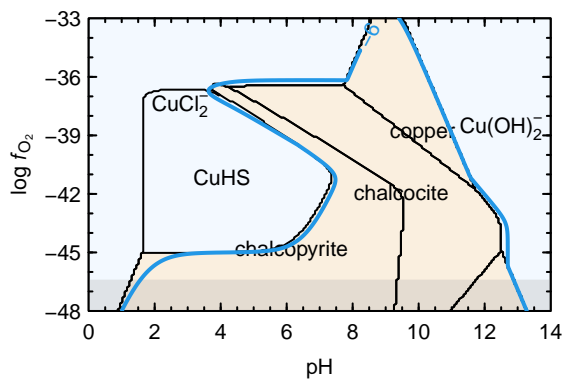
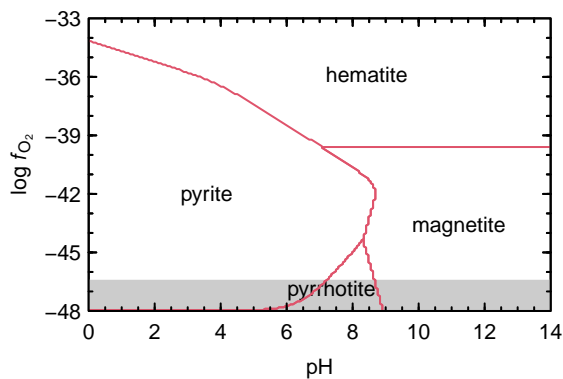
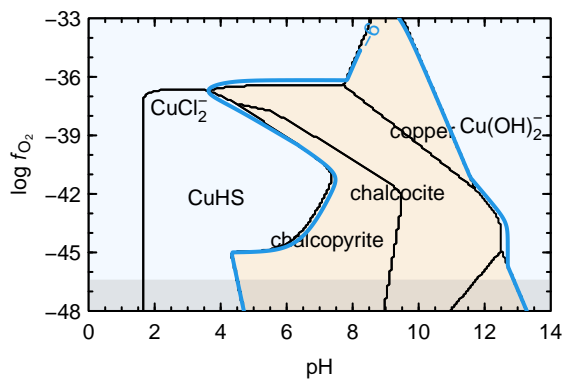
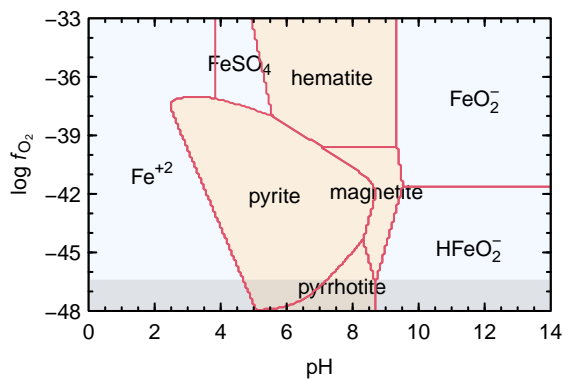


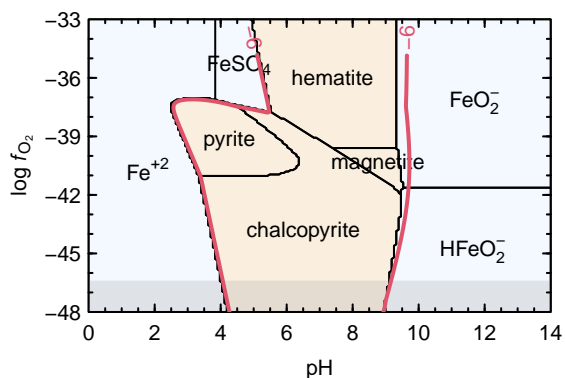
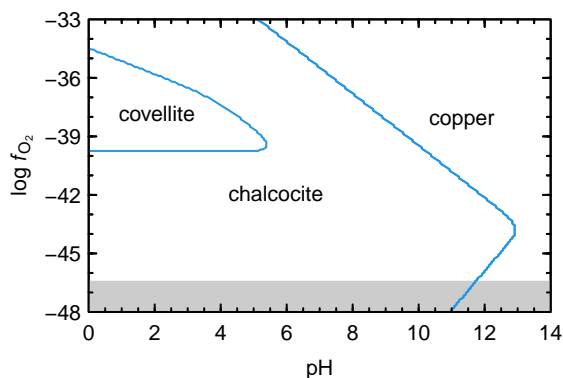
Stack 1: Fe minerals only → Cu(Fe) minerals and Cu aqueous



Stack 2: Fe minerals and aqueous → Cu(Fe) minerals and Cu aqueous



Stack 3: Cu minerals only → Fe(Cu) minerals and Fe aqueous



Stack 4: Cu minerals and aqueous → Fe(Cu) minerals and Fe aqueous

